

CONTRACT NO. 3470 W

DEPARTMENT OF PUBLIC WORKS DETROIT  
CITY ENGINEER'S OFFICE DIVISION OF PAVING DESIGN  
STREET PAVING PLAN

DENVER  
NAME OF STREET: E.P.L. OF CADIEUX  
FROM: W.P.L. OF BLUEHILL

58-10

Table with columns: DESIGNED BY (L. NAUTCH), DRAWN BY, TRACED BY, CHECKED BY, APPROVED (W. S. Walcott), CITY ENGINEER.

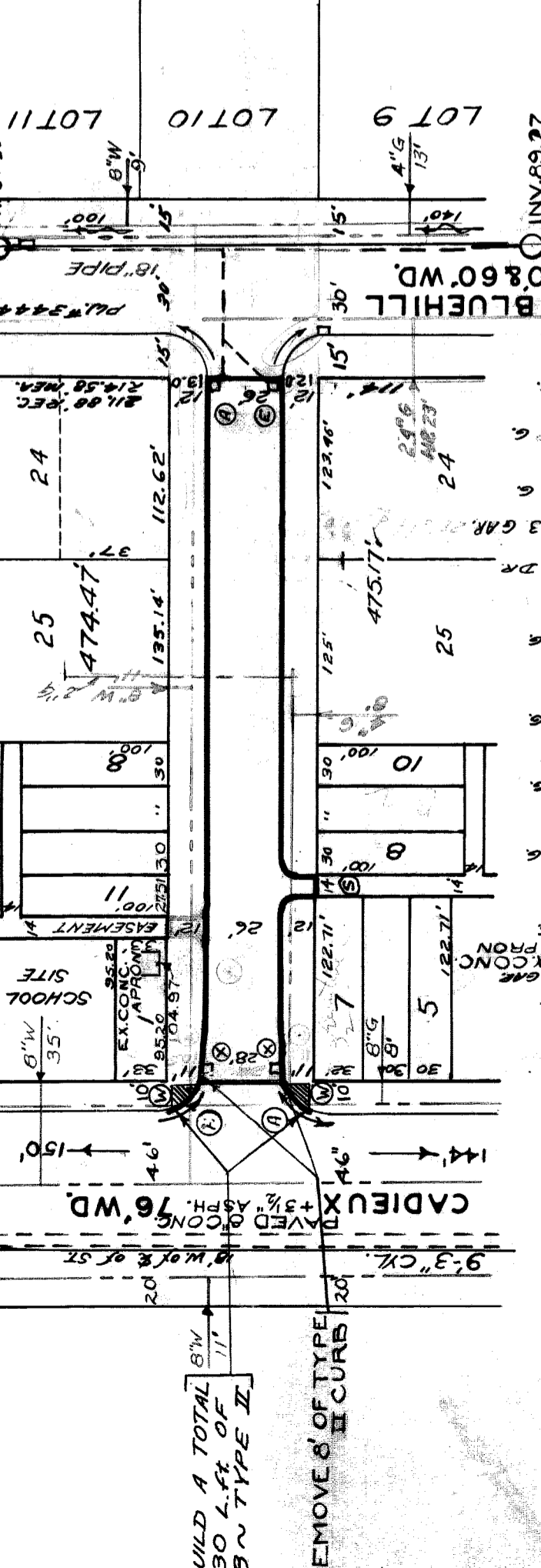
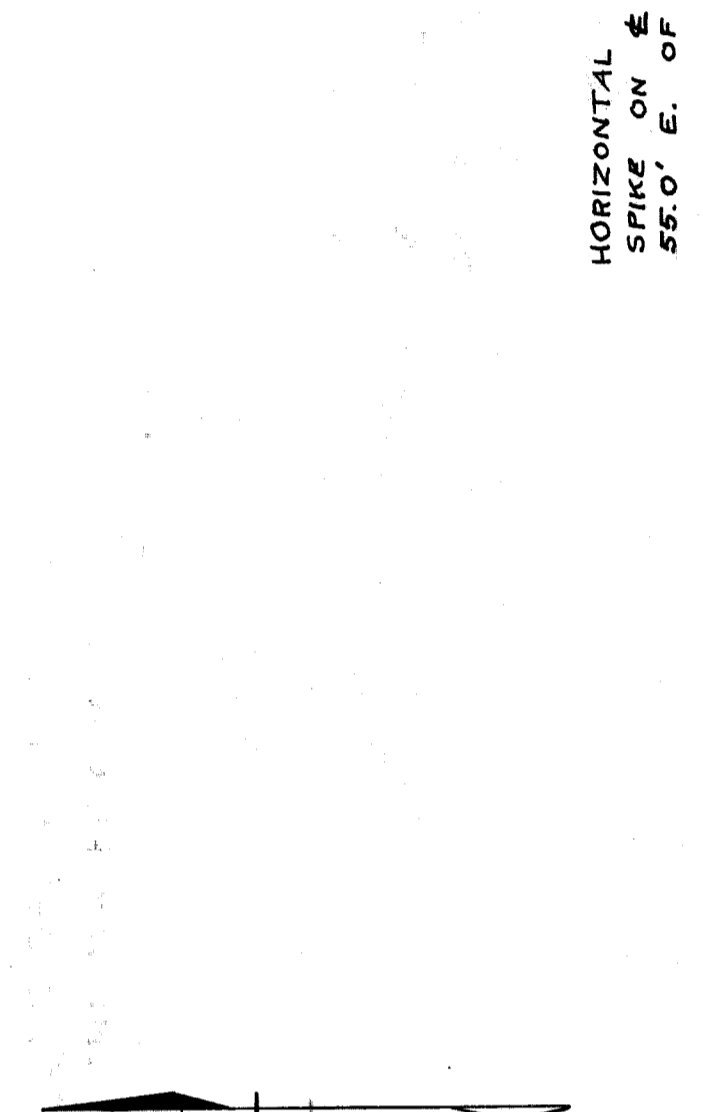
Table with columns: HOR. SCALE (1"=100'), VER. SCALE (1"=2'), PLAN (L.N.), PROFILE (R.R.), GRADE (9.5), LENGTH (467.82), CITY (DENVER).

Table with columns: QUANTITIES, ESTIMATED, FINAL, CITY, LOTS. Includes rows for EXCAVATION, PAVING, TEST CORERS, SIDEWALK, MANHOLES, BASINS, SEWER.

NOTE: BEFORE STARTING CONSTRUCTION CONTRACTOR MUST CHECK WITH UTILITIES FOR LOCATIONS OF EXISTING STRUCTURES...  
PLAN SCALE DISTORTED  
LOTS & ALLEYS: 1"=100', STREET WIDTHS: 1"=50'  
DRAINAGE COMPLETED 5-11-55 DRW  
PAVING COMPLETED C.C. 12-23-58

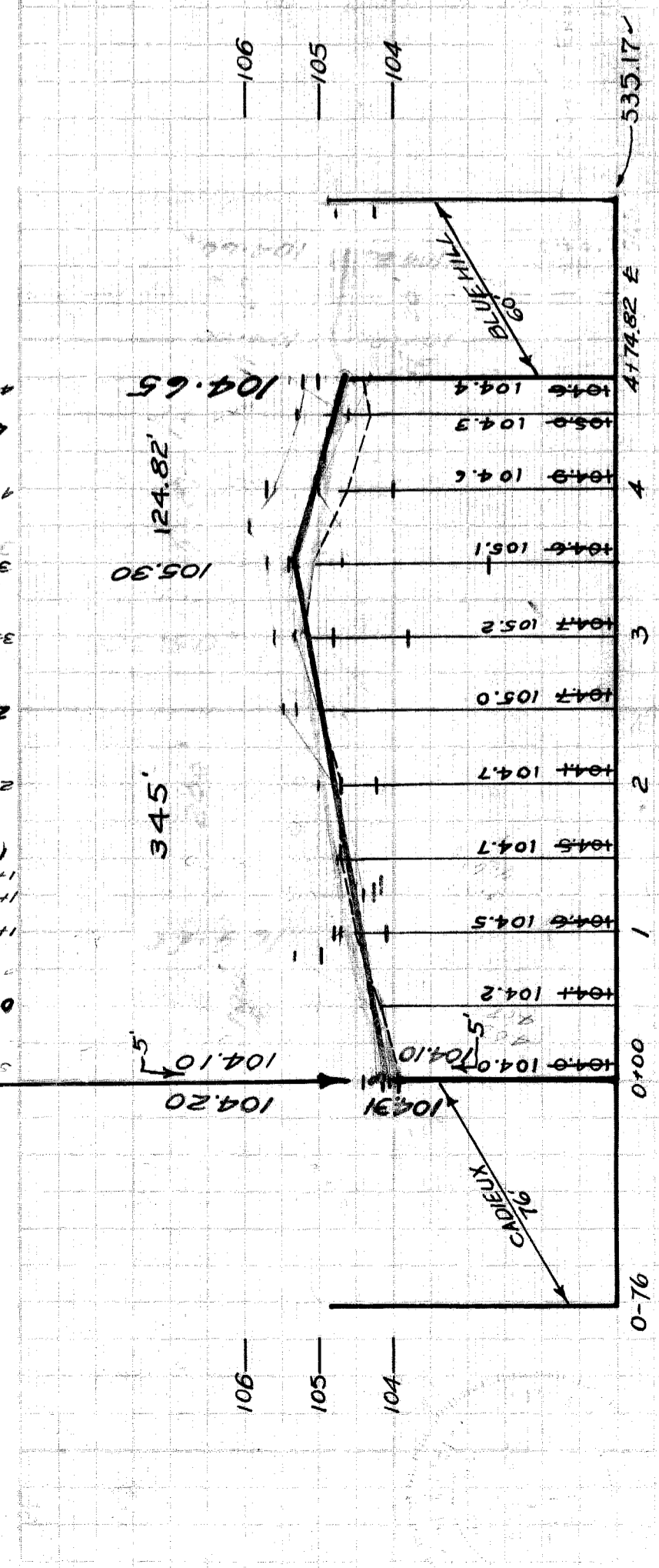
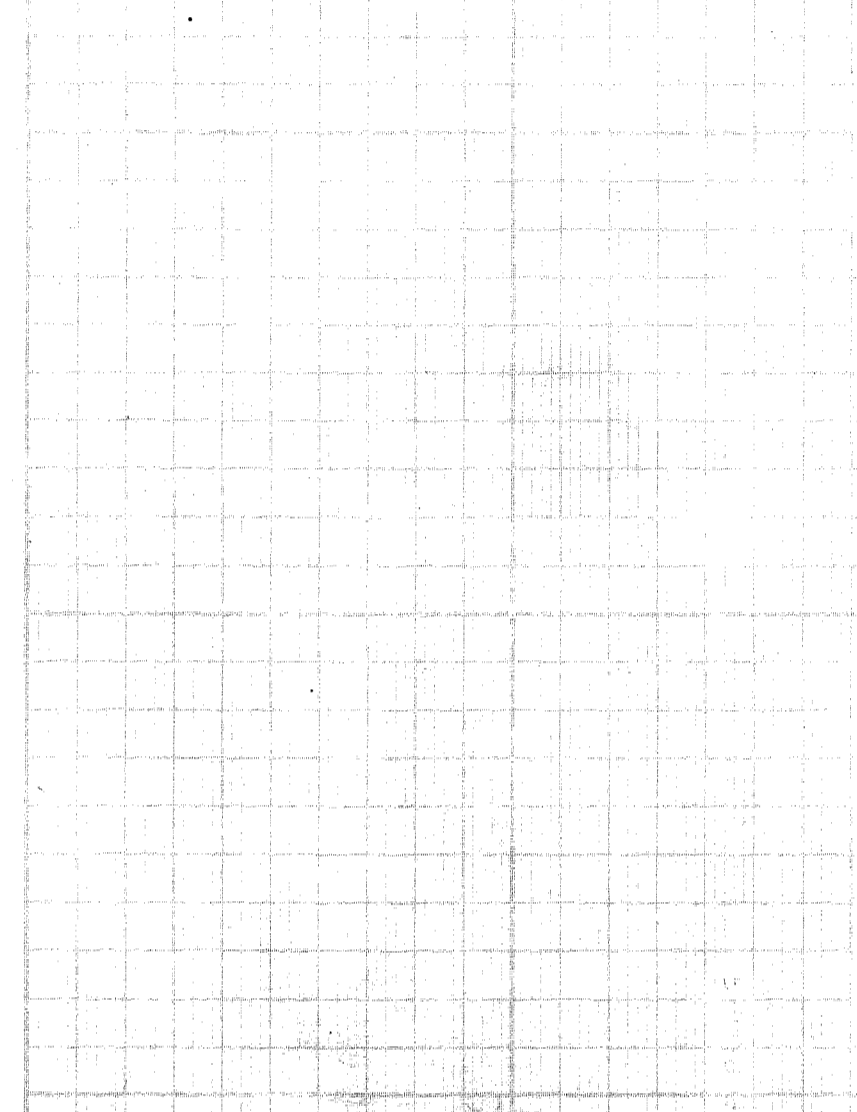
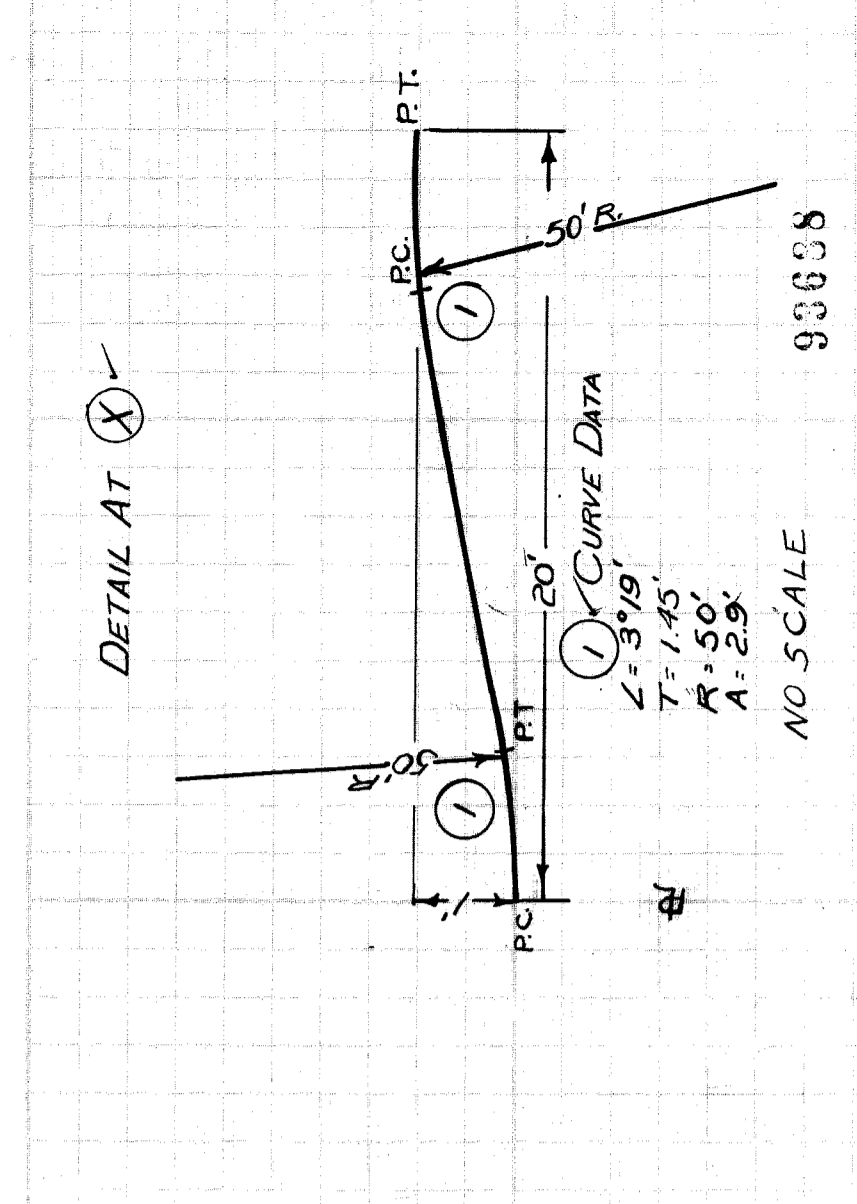
Table with columns: REVISIONS, SUPPLEMENTARY DETAILS. Includes revision C-1783 and C-4283.

REQUESTED BY DETROIT EDISON COMPANY: 5/21/57  
PET. NO. 1682 M. M. BABCOCK  
DATE: 7-1-58  
BENCH MARKS: CADIEUX & MACK  
PBM # 69-235 N.W. COR. DENVER & CADIEUX  
PBM # 69-255A N.W. COR. MACK & GUILFORD



HORIZONTAL CONTROL SPIKE ON E, 5' W. E.P.L. OF CADIEUX & CROSS ON E 55.0' E. OF W.P.L. OF BLUEHILL

NOTE: FOR SYMBOLS (A) ETC., SEE STD. DET. DWG. C-327



NO SCALE 93638