

CONTRACT NO. PW-92

DEPARTMENT OF PUBLIC WORKS DETROIT
CITY ENGINEER'S OFFICE - DIVISION OF PAVING DESIGN

STREET PAVING PLAN A.P. 199-18

DEARING

CARD NO.
 RECORD NO. 16 43
 NAME OF STREET 312.8' W. OF W.P.L. OF JOS. CAMPAU
 FROM 3.5' E. OF W.P.L. OF JOS. CAMPAU
 REGISTERED BY MIKE SUCHECKI DATE 4-16-46
 TYPE OF PAVEMENT 8'-0" 8' ONE COURSE CONCRETE INTERC. CURB WIDTH 26'

REVISIONS

DESIGN	DATE	BY	REVISION
C-244
C-255
C-264
C-377

NOTE: BEFORE STARTING CONSTRUCTION CONTRACTOR MUST CHECK WITH UTILITIES FOR LOCATIONS OF EXISTING STRUCTURES WHETHER OR NOT INDICATED ON PLANS.

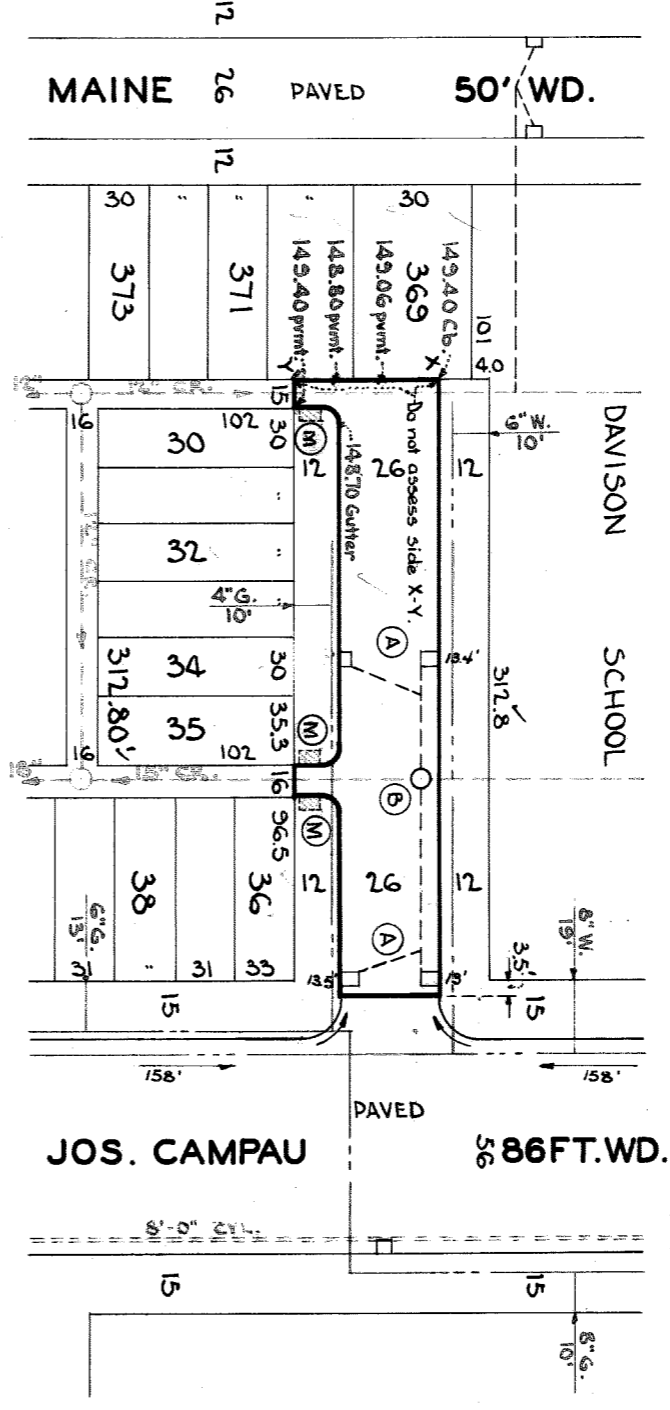
PLAN SCALE DISTORTED
 LOTS & ALLEYS 1" = 100'
 STREET WIDTHS 1" = 50'

DRAINAGE COMPLETED 9-30-41 (LAST)
 PAVING COMPLETED 9-10-46 (C.C.)

QUANTITIES	ESTIMATED	FINAL
EXCAVATION CU YDS	360	39
NEW CURB LIN FT	892	99
PAVING SQ YDS	108	892
SIDEWALK SQ FT	-	-
MANHOLE ADJUST	1	1
MANHOLE CONSTRUCT	-	-
BASE ADJUST	4	4
BASE CONSTRUCT	-	-
SEWER 12" LIN FT	-	-
SEWER 18" LIN FT	-	-

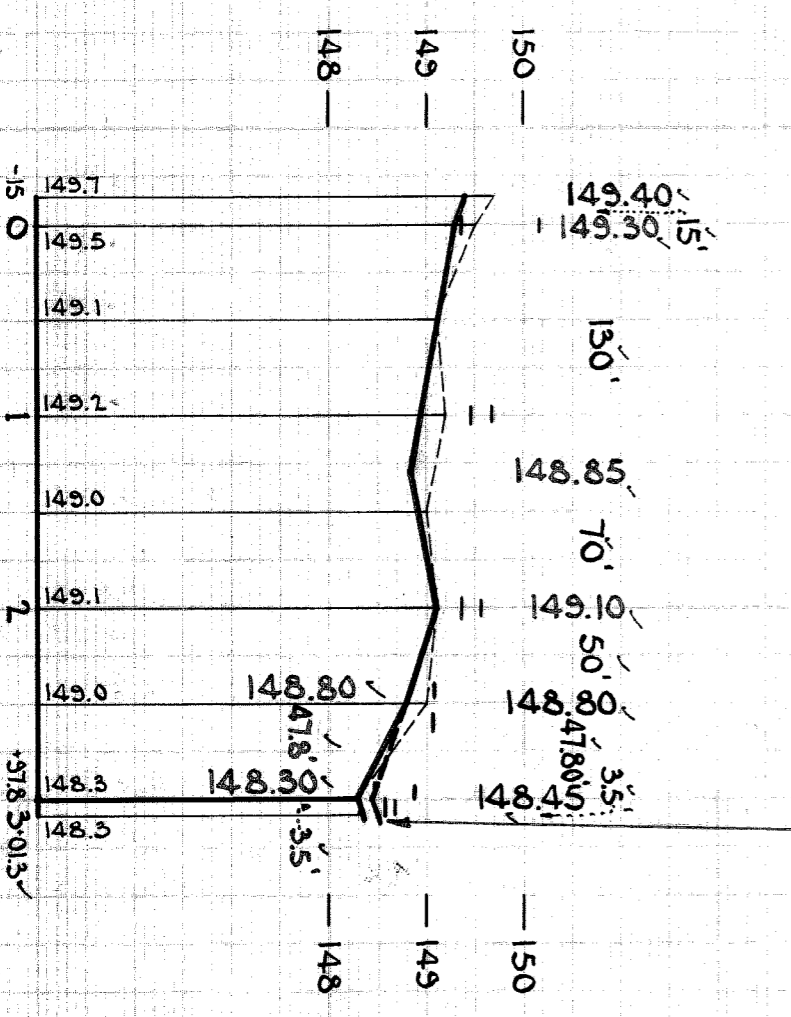
NO.	DATE	BY	REVISION
1
2
3
4

DESIGNED BY P. MATSUMURA
 DRAWN BY P. M.
 CHECKED BY S. R. R.
 ASSISTANT CITY ENGINEER



BENCH MARKS
 P.L.B.M. # 44,254 N.E. COR. OF DAVISON AND JOS. CAMPAU. ELEV. 149.359
 Top of HYDRANT. N.W. COR. OF DEARING AND JOS. CAMPAU. ELEV. 157.13

NOTES:
 At (A) Adjust tops of 4 existing 18"-12" Y. Basins.
 At (B) Adjust top of 1 existing manhole.
 CONTRACTOR SHALL FURNISH AND INSTALL STD. FLAT TYPE CATCH BASIN FRAMES AND GRATES.
 NOTIFY D.P.W. TO SALVAGE OLD CASTINGS.
 At (C) Construct 108 sq. ft. of std. 4" concrete walk - 6' wide.



93676