

WPA B-3011

BOOK 1159 PAGE 37

DATE 3-7-38

DEPARTMENT OF PUBLIC WORKS DETROIT

CITY ENGINEER'S OFFICE - DIVISION OF PAVING DESIGN
STREET PAVING PLAN

NAME OF STREET: **DEAN AVE. 60'**
 FROM: **Mc NICHOLS RD.**
 TO: **NORTH of NANCY AVE.**
 TYPE OF PAVEMENT: **8" MACADAM - OIL & CHIPS** WIDTH: **30'**

INDEX TOPO. NO. NO. 16 45
 SHEET NO. 1

DESIGNED BY	F. Guillemette	APPROVED
DRAWN BY	H. Barhouse	W. Wallace
TRACED BY		ENGINEER OF STREETS
CHECKED BY	F. Guillemette	Marion R. Fisher
		ASST. CITY ENGINEER

... BENCH MARKS ...
 ARROW ON HYD. N.E. CORNER NANCY & CONANT 152.50 ✓
 " " S.E. " " & DEAN 151.31 ✓

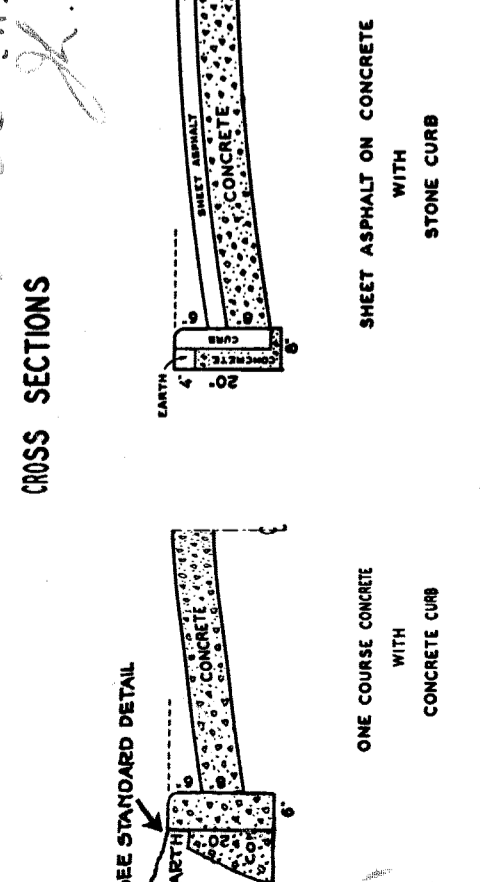
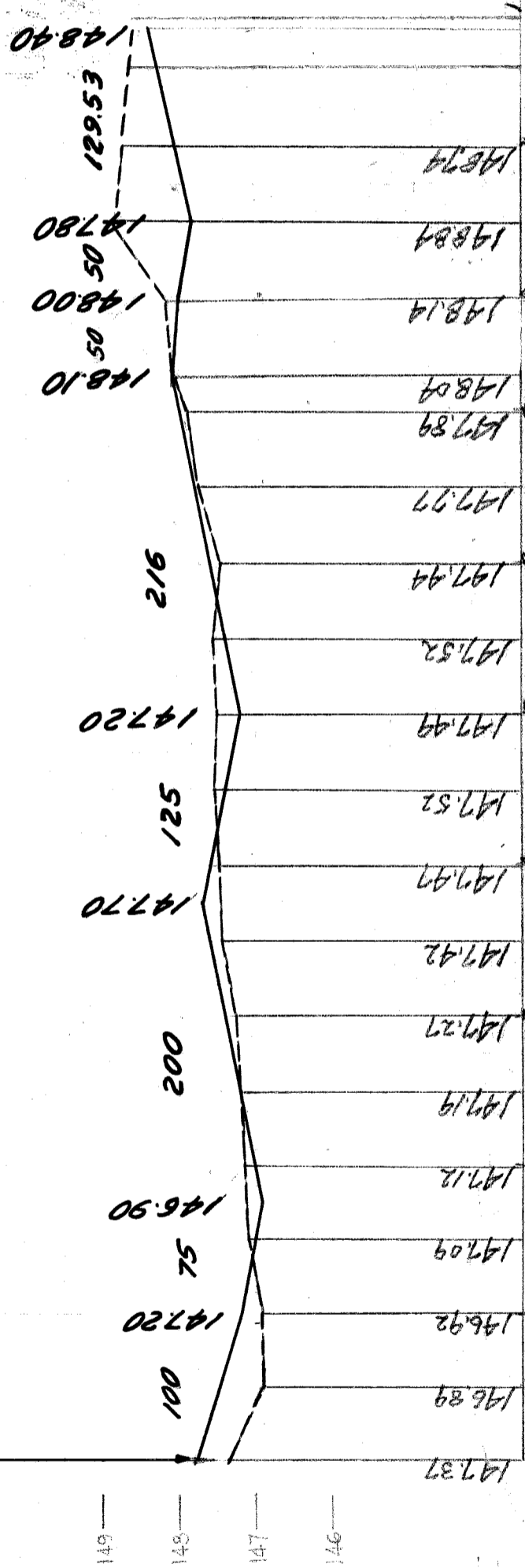
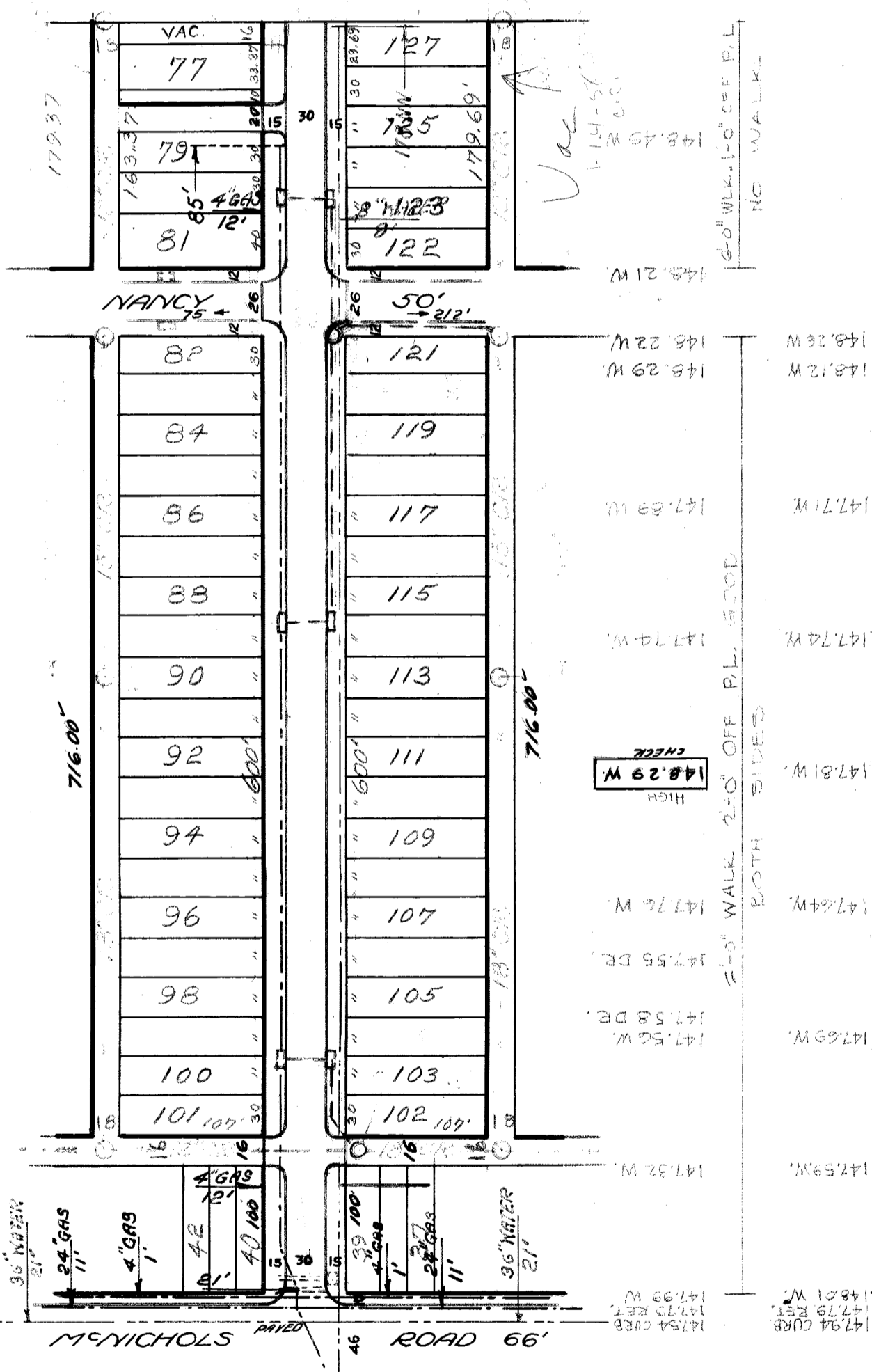
NEW " " 8 "
SUMP MANHOLE
BASINS BY W.P.A.
Installed 10-29-38

DRAINAGE COMPLETED
 PAVING COMPLETED 12-9-39

WATER MAINS OK, 8-3-38

93674

QUANTITIES		CIRCLES		EXCAVATION		STR. CURB NEW		OLD CURB RESET		CIRCULAR CURB		PAVING		CONCRETE BASE	
AT NO.	Δ	RADIUS	TANG.	ARC	SEG.										
LOT 1		LOT 2		LOT 3		LOT 4		LOT 5		LOT 6		LOT 7		LOT 8	



McNICHOLS ROAD 66'

93674