

8 B.N. 111.17

SEWER	Grade Change 10'-23'-47" S.D.
REVISIONS	Location of Proposed S.D. on 8 Mile Road
DRAWING NO. SUPPLEMENTARY DETAILS	

NOTE:  
 BEFORE STARTING CONSTRUCTION CONTRACTOR MUST CHECK WITH UTILITIES FOR LOCATIONS OF EXISTING STRUCTURES WHETHER OR NOT INDICATED ON PLANS.  
 PLAN SCALE DISTORTED  
 LOTS & ALLEYS 1"=100'  
 STREET WIDTHS 1"=50'  
**HAMLET TO 8 MILE - 11-11-41**  
**ALPHANUMERIC COMPLETED**  
**OUTER DR. TO HAMLET BY D.P.M. 12-28-48.**  
**PAVING COMPLETED C.C. 12-19-50**

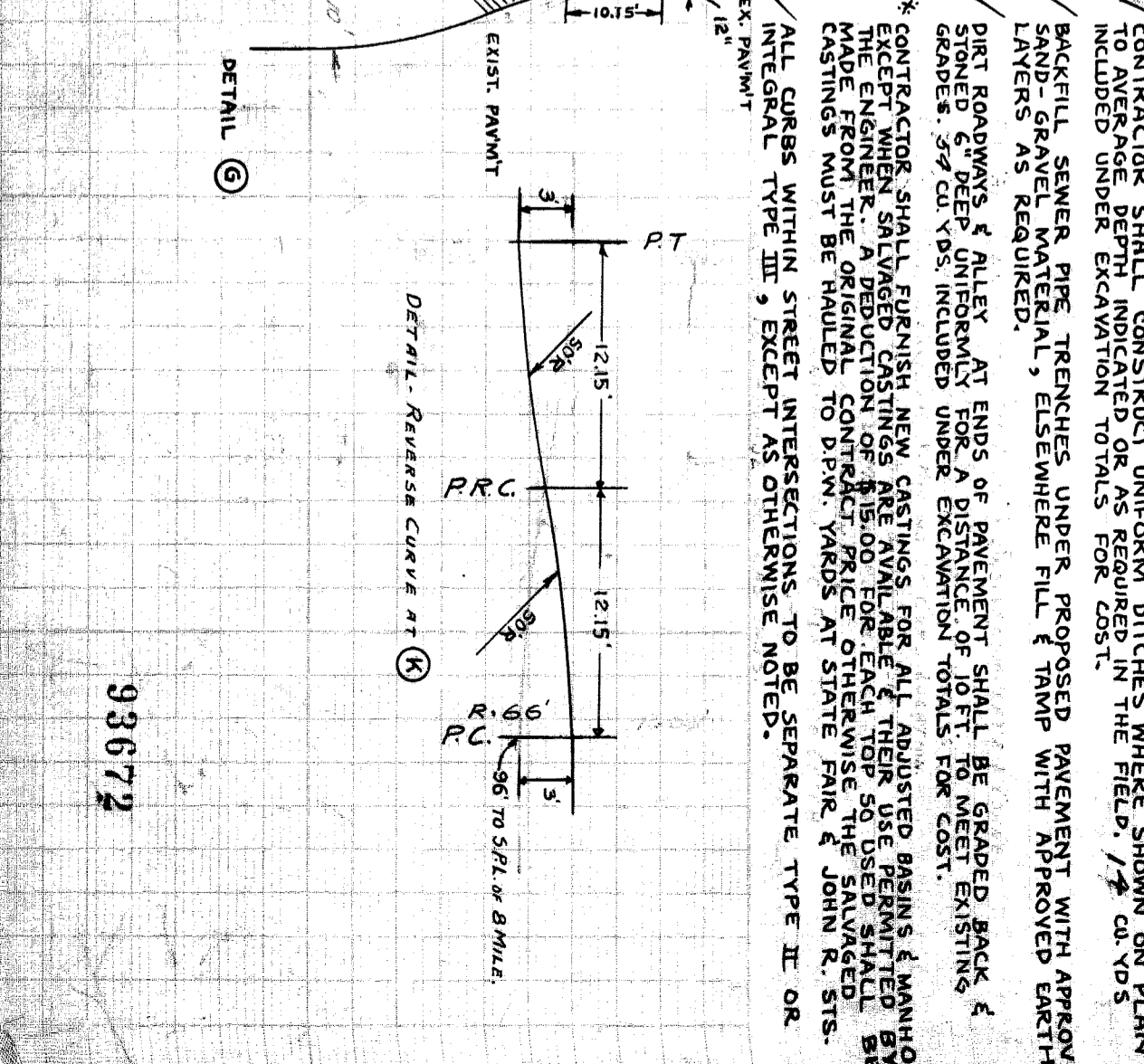
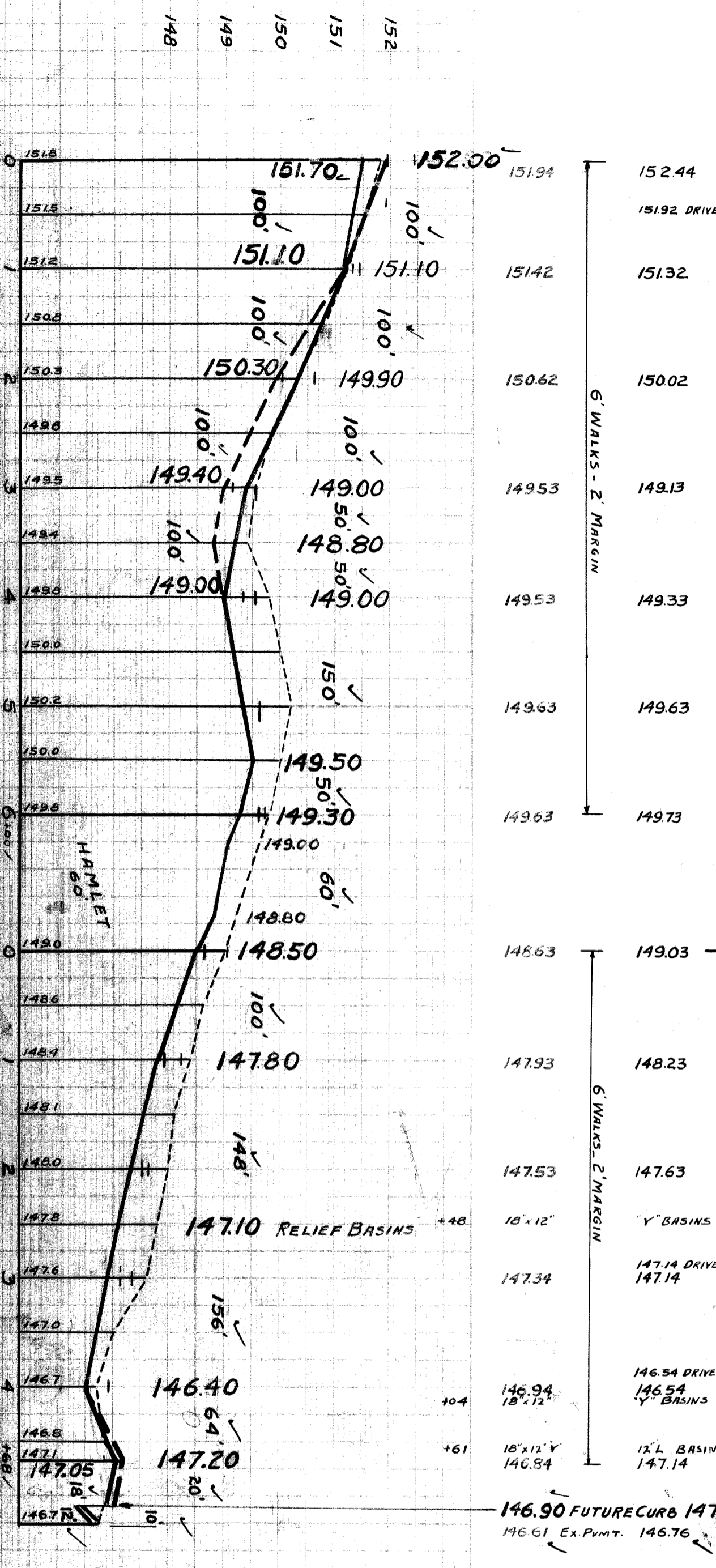
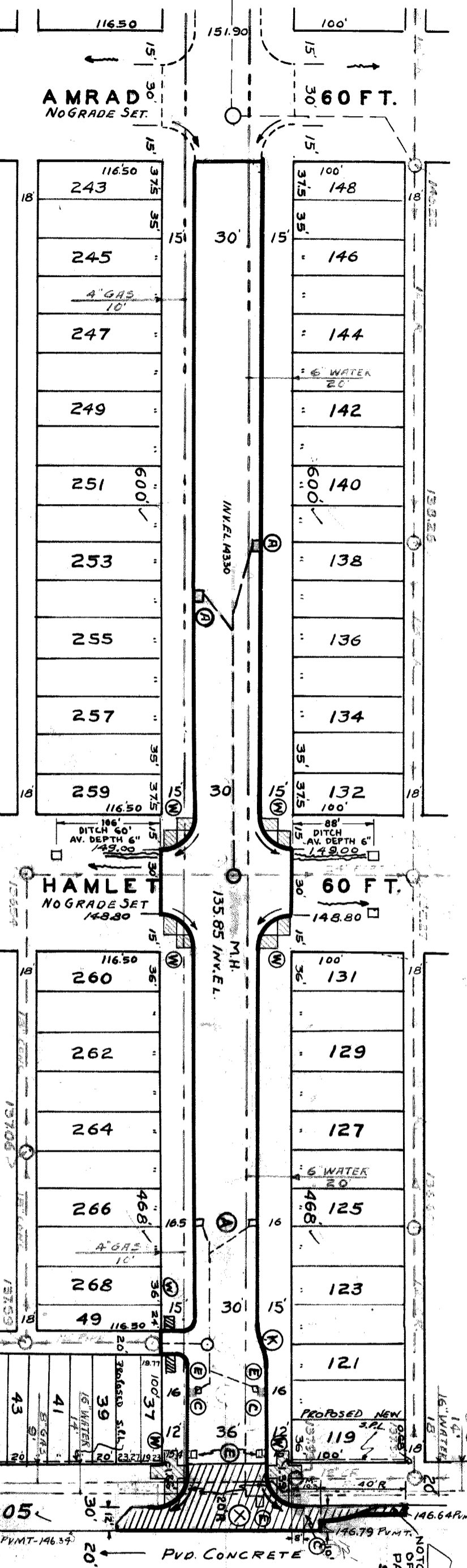
QUANTITIES	ESTIMATED	FINAL
EXCAVATION CU. YDS.	LOTS	CITY
NEW CURB LIN. FT.		
PAVING SQ. YDS.		
SIDWALK SQ. FT.		
MANHOLES CONSTRUCT		
ADJUST CONSTRUCT		
BASINS CONSTRUCT		
SEWER 12" LIN. FT.		
SEWER 18" LIN. FT.		

HOR. SCALE	1"=100'	BOOK	1592	PAGE	24
VER. SCALE	1"=2'	DATE	11-12-45		
PLAN CHECKED	R.E.R.	PROFILE CHECKED	R.E.R.	COMPUTED	E.E.R.
CHECKED	E.E.S.	REK	CHECKED	REK	
LOTS	10	CITY	91	CITY	
TOTAL	21	LOTS		CITY	
APPROVED BY <i>M. J. Reider</i> ENGINEER OF STREETS COST ESTIMATING BY <i>Maxine D. Foster</i> COST INSPECTOR					

DESIGNED BY	R. E. REID.
DRAWN BY	R. E. REID
TRACED BY	
CHECKED BY	E. E. STANLEY
APPROVED	

CONTRACT PW 1326 F  
 DEPARTMENT OF PUBLIC WORKS DETROIT  
 CITY ENGINEER'S OFFICE --- DIVISION OF PAVING DESIGN  
**STREET PAVING PLAN**  
 325 AM-6  
 AP-132-16B  
 CARD NO. **10 91**  
 NAME OF STREET **DEAN**  
 FROM **N.P.L. AMRAD**  
 TO **30'N OF S.P.L. EIGHT MILE RD.**  
 TYPE OF PAVEMENT **8" & 6" ONE COURSE CONCRETE**  
 WIDTH **304.36**  
 SHEET OF 2  
 RECORD NO.

BENCH MARKS  
 P.L.B.M. # 91-258 S.W. COR. RYAN & 8 MILE RD.  
 SPIKE IN E.S. OF DET. ED. POLE S.W. COR. DEAN & HAMLET.  
 ARROW OF HYD. W.S. DEAN, 288' N. OF AMRAD  
 147.026  
 150.32  
 151.60



- NOTES (SHEET 2 OF 2)
- ADJUST TOPS OF 4 EXISTING CATCH BASINS USING FLAT TYPE FRAMES & GRATINGS. SEE NOTE PERTAINING TO CASTINGS.
  - CONNECT 3 STD PIPE CATCH BASINS WITH STD FRAMES & GRATINGS AS REQUIRED TO EXISTING OUTLETS AS SHOWN. SEE STD. DRGS. C-326 A & C-524.
  - ABANDON 5 EXISTING PIPE BASINS. PLUG OUTLETS WITH CLASS "C" CONCRETE & REMOVE OR FILL BASINS WITH CLASS "C" CONCRETE.
  - CONSTRUCT 225 SQ. FT. OF STANDARD 4" SIDEWALK.
  - CONSTRUCT 36' RETURN OF 8" UNIFORM CONCRETE WITH TYPE II CURBS, 20' RAD AND 12" WIDENING STRIP ON E. SIDE & 10" WIDENING STRIP ON W. SIDE. WIDENING STRIPS TO BE 5" UNIFORM CONCRETE. SEE STD DRWG. C-789.
  - RAISE 3 SLABS ON S.W. CORNER AND 3 SLABS ON S.E. CORNER OF DEAN & 8 MILE RD. TO CONFORM TO CURB GRADES.
  - ADJUST TOPS OF 3 EXISTING SEWER MANHOLES.
  - ADJUST TOPS OF 2 WATER MANHOLES.
  - CONTRACTOR SHALL CONSTRUCT UNIFORM DITCHES WHERE SHOWN ON PLAN TO AVERAGE DEPTH INDICATED OR AS REQUIRED IN THE FIELD. 1/2 CU YDS INCLUDED UNDER EXCAVATION TOTALS FOR COST.
  - BACKFILL SEWER PIPE TRENCHES UNDER PROPOSED PAVEMENT WITH APPROVE SAND-GRAVEL MATERIAL, ELSEWHERE FILL & TAMP WITH APPROVED EARTH LAYERS AS REQUIRED.
  - PIRT ROADWAYS & ALLEY AT ENDS OF PAVEMENT SHALL BE GRADED BACK & STONED 6" DEEP UNIFORMLY FOR A DISTANCE OF 10 FT. TO MEET EXISTING GRADES. 2/3 CU YDS. INCLUDED UNDER EXCAVATION TOTALS FOR COST.
  - CONTRACTOR SHALL FURNISH NEW CASTINGS FOR ALL ADJUSTED BASINS & MANHOLE EXCEPT WHERE SALVAGED CASTINGS ARE AVAILABLE. EACH ITEM USED SHALL BE THE ORIGINAL CONTRACT PRICE. OTHERWISE THE SALVAGED CASTINGS MUST BE HAULED TO D.P.M. YARDS AT STATE FAIR & JOHN R. STS.
  - ALL CURBS WITHIN STREET INTERSECTIONS TO BE SEPARATE TYPE II OR INTERGRAL TYPE III, EXCEPT AS OTHERWISE NOTED.

93672