

1088114
1088115
1088116

SUPPLEMENTARY
DETAILS

SEWER INDEXED	AS. J. J. J.	JOB NO.	PROGRESS	QUANTITIES	LOTS	CITY	LOTS	CITY	DESIGNED BY	R. R. R.
REVISIONS		BLUE PRINT ISSUED FOR:	DATE	EXCAVATION	794	191	794	191	DRAWN BY	J. S. J.
Ground profile and walk elev. raised		GRADE ONLY		STRAIGHT CURB NEW		94		0	TRACED BY	"
		CATCH BASINS		OLD CURB RESET					CHECKED BY	R. R. R.
		PAYING-CLASS.		CIRCULAR CURB					APPROVED	
		DEPT. OF WATER SUPPLY		PAVING					<i>R. R. R.</i>	ENGINEER OF STREETS
		GAS CO.		CONCRETE BASE					<i>W. R. J.</i>	ASSIST. CITY ENGINEER
				WALKS						
				M.H.S - ADJ.						
				C.B.S - ADJ.						

CONTRACT PW-112
 DEPARTMENT OF PUBLIC WORKS
 STREET PAVING PLAN
 CHEYENNE AVE.
 CITY ENGINEER'S OFFICE ... DIVISION OF PAVING DESIGN
 DETROIT

RECORD NO. 64 87
 INDEX TOPO NO. NO.
 NAME OF STREET CHEYENNE AVE.
 N.P.L. OF VASSAR P.A.P. 115-4
 N.P.L. OF ST. MARTINS P.A.P. 115-4
 N.P.L. OF PEMBEROKE S.P.L. OF PEMBEROKE

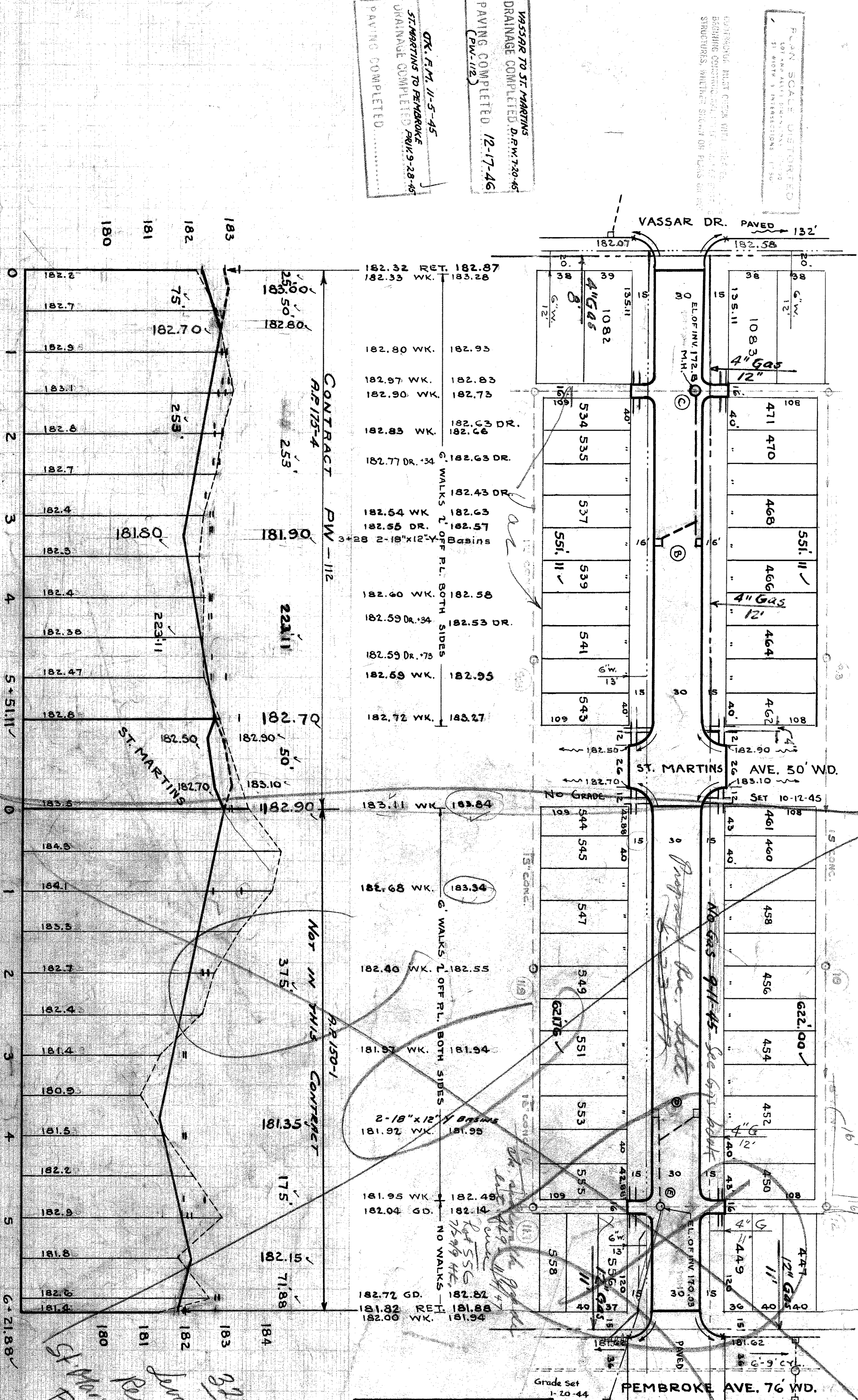
TYPE OF PAVEMENT 8" S. B. ONE COURSE CONCRETE
 WIDTH 30'
 Pet.# 7284 Wm. Blom et al 9-6-45 VASSAR TO ST. MARTINS.

PLAN SCALE DISTORTED
 1" = 10'
 1" = 10'

CONTRACT PW-112
 CONTRACT PW-112
 CONTRACT PW-112

VASSAR TO ST. MARTINS
 DRAINAGE COMPLETED D.F.W. 7-30-45
 PAVING COMPLETED 12-17-46
 (P.W. 112)

OK. F.M. 11-5-45
 ST. MARTINS TO PEMBEROKE
 DRAINAGE COMPLETED P.W. 9-28-45
 PAVING COMPLETED



REPORT FROM MCGRATH-LOWERING OF WATERMAIN CURB HEIGHTS
 BENCH MARKS
 ARROW ON HYD. NE. COR. CHEYENNE AND VASSAR
 SPIKE IN LIGHT POLE S.W. COR. CHEYENNE AND ST. MARTINS
 SPIKE IN LIGHT POLE N.W. COR. CHEYENNE AND PEMBEROKE

9.A.P. 150-1 ST. MARTINS TO PEMBEROKE
 LOTS 2L 1/21 76' LENGTH 605' 99'
 CITY 2L 32 - - - - - 16 - - -
 TOTAL 2L 1 243 76' LENGTH 621' 88'

9.A.P. 150-1 ST. MARTINS TO PEMBEROKE
 QUANTITIES
 EXCAVATION 1 0% 64
 STRAIGHT CURB NEW
 OLD CURB RESET
 CIRCULAR CURB
 PAVING 2 087 111
 CONCRETE BASE
 WALKS - - - - - 144
 M.H.S - ADJUST
 C.B.S - ADJUST 2 - - - - -

BENCH MARKS F.D. # 1561
 ELEV.
 P.L.B.M. # 87256A. HOLE MONUMENT. N.E. CORNER 183.197
 SEVEN MILE AND SNOWDEN 185.22
 ARROW ON HYDRANT. N.E. COR. CHEYENNE AND VASSAR 185.79
 ARROW ON HYDRANT. S.E. COR. CHEYENNE AND ST. MARTINS 184.80
 ARROW ON HYDRANT. N.E. COR. CHEYENNE AND PEMBEROKE 184.80
 P.L.B.M. # 87257A. HOLE MONUMENT. N.E. CORNER 180.851
 PEMBEROKE AND SNOWDEN

NOTE:
 A.P. 115-4 VASSAR TO ST. MARTINS - PW-112
 AT (A) ADJUST TOPS OF 2-EXISTING 18"X12" Y BASINS.
 AT (B) ADJUST TOPS OF 1-EXISTING 18"X12" Y BASINS.
 CONTRACTOR SHALL FURNISH AND INSTALL STD. FLAT TYPE CATCH BASIN FRAMES AND GRATES.
 NOTIFY D.F.W. TO SALVAGE OLD CASTINGS.

A.P. 150-1 ST. MARTINS TO PEMBEROKE
 AT (A) ADJUST TOPS OF 2-EXISTING 18"X12" Y BASINS.
 AT (B) ADJUST TOPS OF 1-EXISTING 18"X12" Y BASINS.
 CONTRACTOR SHALL FURNISH AND INSTALL STD. FLAT TYPE CATCH BASIN FRAMES AND GRATES.
 NOTIFY D.F.W. TO SALVAGE OLD CASTINGS.

33435