

**DEPARTMENT OF PUBLIC WORKS DETROIT**  
 CITY ENGINEERS OFFICE ... DIVISION OF PAVING DESIGN  
**STREET PAVING PLAN**

NAME OF STREET **BRAWELL AVE.**

FROM **33' S. OF N.P.L. CHICAGO AVE.**

TO **40' N. OF S.P.L. PLYMOUTH AVE.**

TYPE OF PAYMENT **FHA-PRIVATE** WIDTH **30' 8.36**

CARD NO.  INDEX TOPO NO. **77** RECORD NO. **118**

DESIGNED BY V.T. Hillier  
 DRAWN BY  
 TRACED BY  
 CHECKED BY R3  
 APPROVED BY  
 ASSIST. CITY ENGINEER

HOR. SCALE 1" = 50'	BOOK 1442	PAGE 64
VER. SCALE 1" = 2'	DATE Aug 1944	
PLAN	PROFILE	V.H. COMPUTED
CHECKED R2	GRADE	R3 CHECKED
LOTS 2L	LENGTH	LENGTH
CITY 2L	LENGTH	LENGTH
TOTAL 2L	LENGTH	LENGTH
	LOTS	CITY

QUANTITIES	ESTIMATED	FINAL
EXCAVATION CU. YDS.	LOTS	CITY
NEW CURB LIN. FT.		
PAVING SQ. YDS.		
SIDEWALK SQ. FT.		
MANHOLES ADJUST		
BASINS ADJUST		
SEWERS 12" LIN. FT.		
SEWERS 15" LIN. FT.		

NOTE: BEFORE STARTING CONSTRUCTION CONTRACTOR MUST CHECK WITH UTILITIES FOR LOCATIONS OF EXISTING STRUCTURES WHETHER OR NOT INDICATED ON PLANS.  
 PLAN SCALE DISTORTED  
 LOTS & ALLEYS 1" = 100'  
 STREET WIDTHS 1" = 50'

SEWER  **OK** *11-1-44*

REVISIONS

SUPPLEMENTARY DETAILS

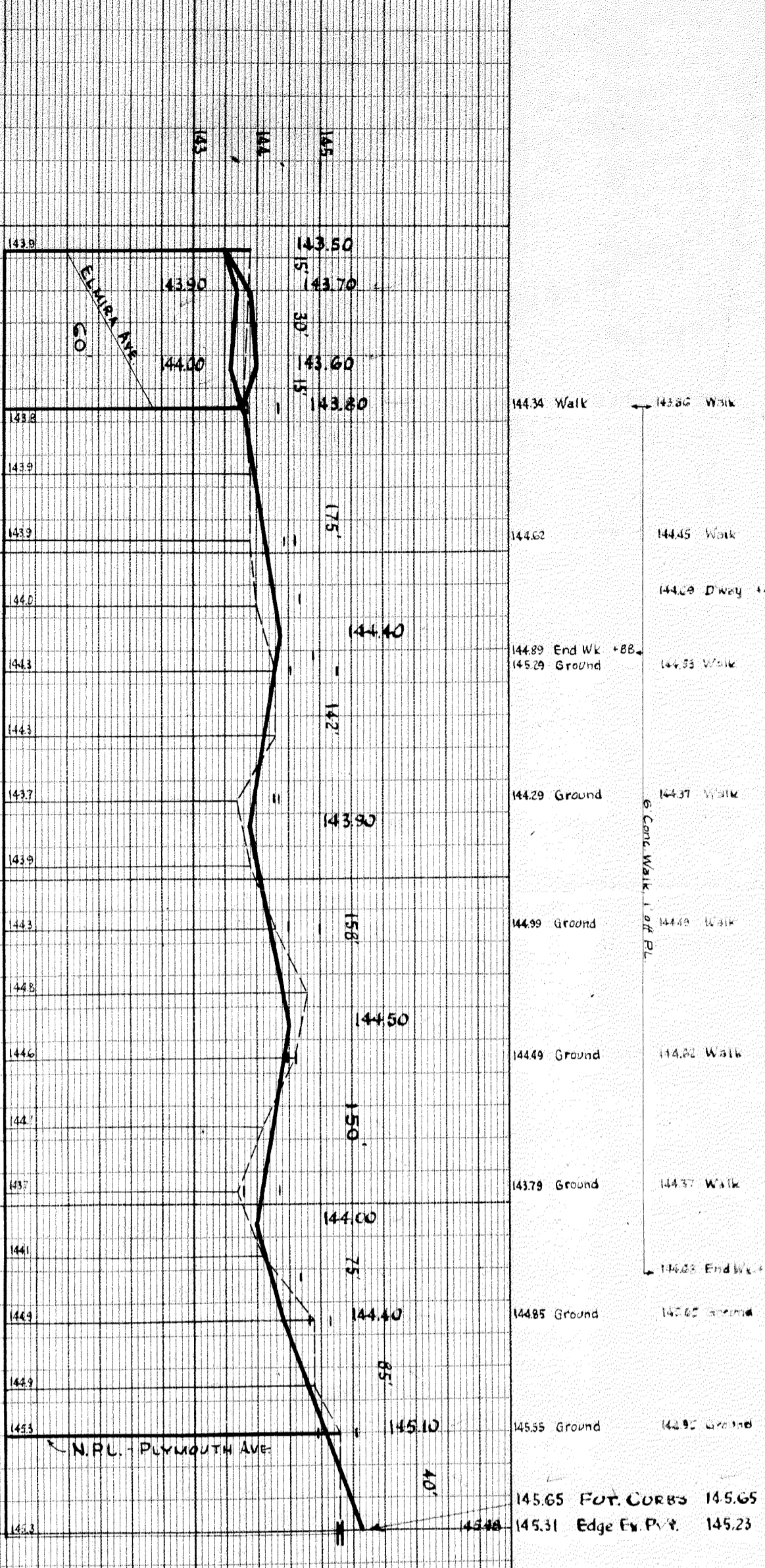
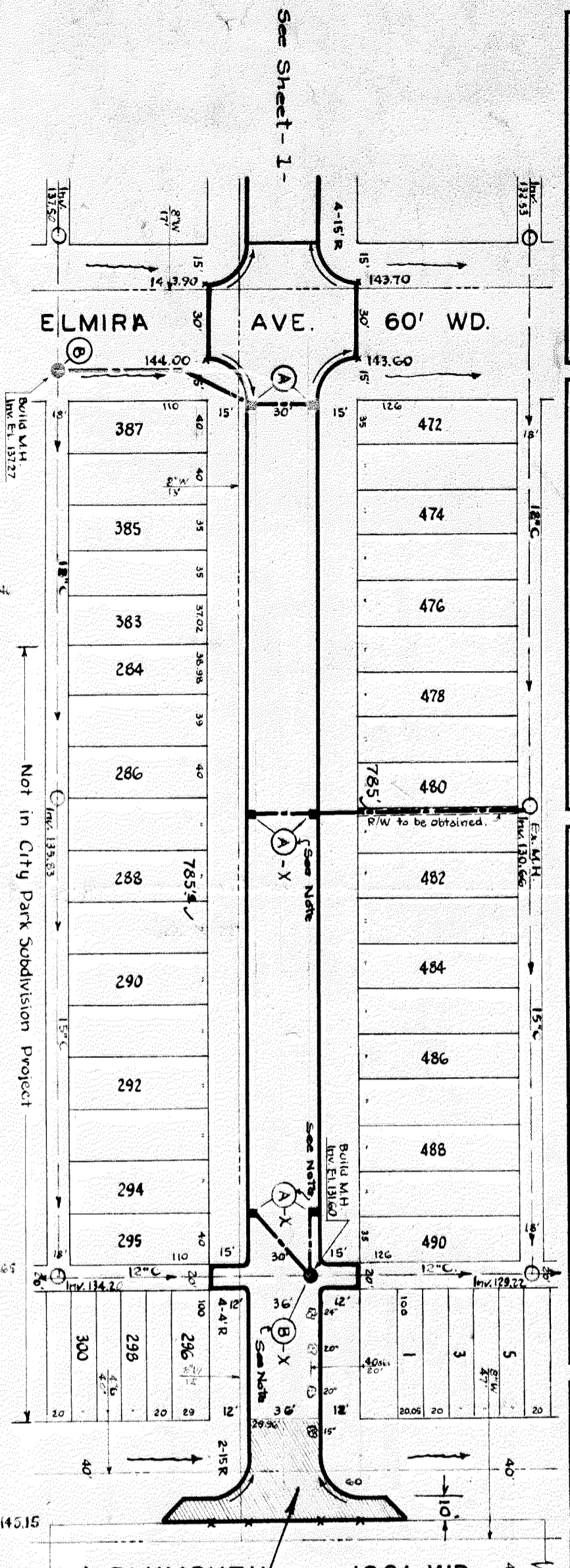
DRAWING NO.

PAVING COMPLETED

DRAINAGE COMPLETED

SEWERS 12" LIN. FT.

SEWERS 15" LIN. FT.



NOTE:-  
 Construct Concrete Return in Plymouth with 10ft. widening See Std. Plan #C-371 - Slab in Plymouth to be 10" thick.

NOTE:-  
 For FHA improvements for City Park Subdivision, the 6 catch basins marked A-X & 2 Manholes marked B-X together with interconnecting inlet sewers may be omitted until permanent paving is installed. W.S.W. 8-31-44.

Requested by Frischkorn Realty Co. 8-7-44

See Sheet #1 of 2 For all Bench Marks

NOTE:  
 At A Construct 14 Std. 18"-12" Y-catch basins together with 12" sewer inlet connections as shown.  
 At B Construct 4 Std. Manholes with necessary sewer connections as shown.

*Handwritten notes:*  
 2 Manholes 18" x 12"  
 150' of 12" sewer