

325 H-7
 63 105
 BILTMORE
 CONTRACT NO. PW-597
 FROM 13th N.P.L. OF 7 MILE
 TO N.P.L. OF CAMBRIDGE
 N.P.L. OF VASSAR

DESIGNED BY: SAM ASMITA
 W.I. Calhoun
 CHECKED BY: S.A.S. R. Fisher
 APPROVED BY: Martin R. Fisher
 ENGINEER OF STREETS
 CITY ENGINEER

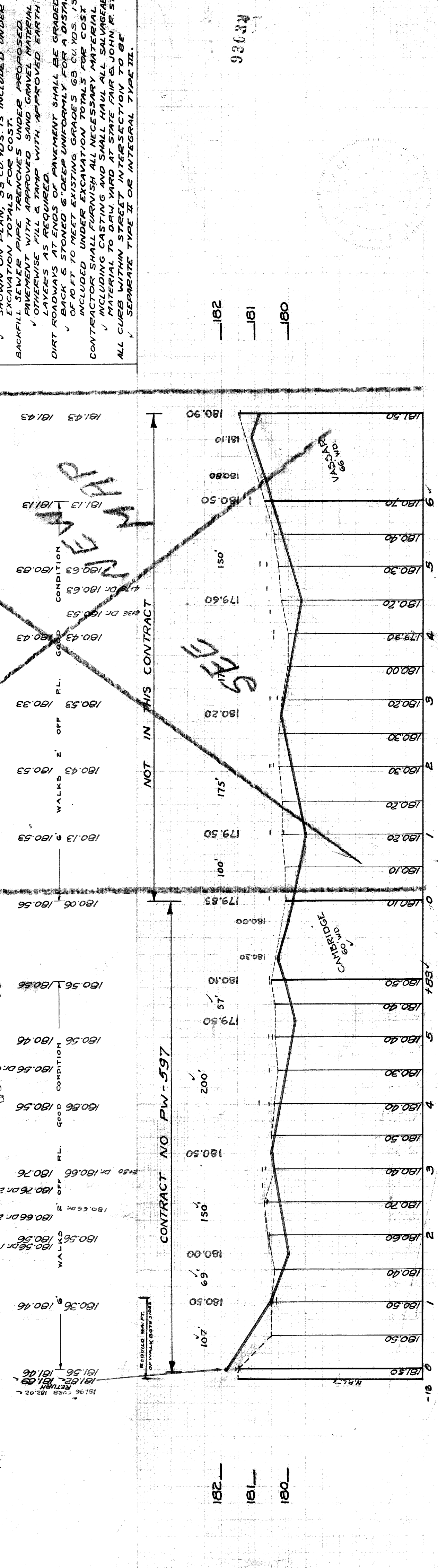
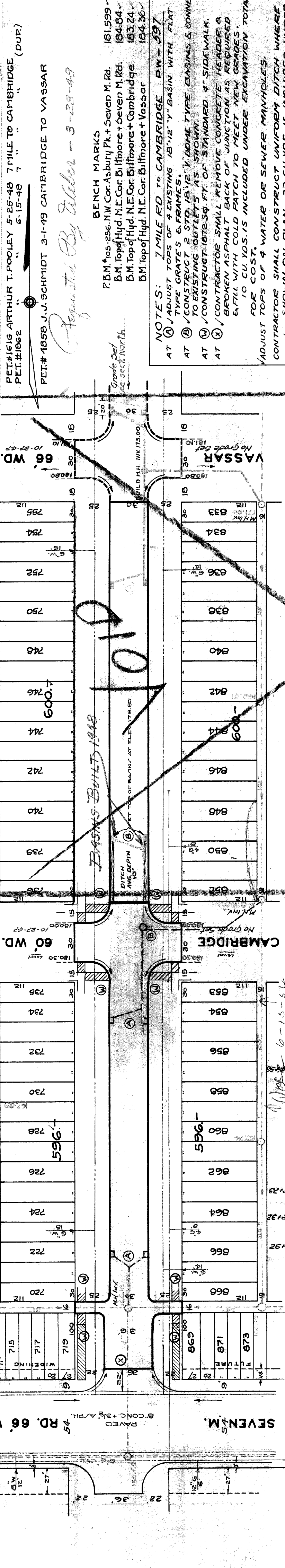
| QUANTITIES | ESTIMATED | FINAL | LOT | CITY | SCALE | DATE | NO. |
|--------------------------|-----------|-------|------|------|---------|----------|-----|
| EXCAVATION CU YD | 863 | 863 | 340 | 340 | 1" = 2' | 10-16-47 | 74 |
| NEW CURBS LIN FT | 2011 | 149 | 2011 | 149 | 1" = 2' | 10-23-47 | 74 |
| PAVING 8" CONC. SIDEWALK | 1072 | 1072 | 149 | 149 | 1" = 2' | 10-23-47 | 74 |
| MANHOLES | 4 | 4 | 4 | 4 | 1" = 2' | 10-23-47 | 74 |
| BASINS | 2 | 2 | 2 | 2 | 1" = 2' | 10-23-47 | 74 |
| SEWERS 12" | 150 | 150 | 150 | 150 | 1" = 2' | 10-23-47 | 74 |
| SEWERS 18" | 395 | 395 | 395 | 395 | 1" = 2' | 10-23-47 | 74 |

NOTE: BEFORE STARTING CONSTRUCTION CONTRACTOR MUST CHECK WITH UTILITIES FOR LOCATIONS OF EXISTING STRUCTURES WHETHER OR NOT INDICATED ON PLANS.

PLAN SCALE DISTORTED
 LOTS & ALLEYS 1" = 100'
 STREET WIDTHS 1" = 50'

7 mi. Cambridge by D.P.W. 11-26-47
 7 mi. Rd. to Cambridge only C.C. 12-14-48

| | | |
|-----------------------|-------|-------|
| SEWER REVISIONS | C-587 | C-938 |
| SUPPLEMENTAL DRAWINGS | C-330 | C-735 |
| | C-331 | C-736 |
| | C-332 | C-737 |
| | C-333 | C-738 |
| | C-334 | C-739 |
| | C-335 | C-740 |
| | C-336 | C-741 |
| | C-337 | C-742 |



CONTRACT PW-597
 7 MILE RD. TO CAMBRIDGE

CONTRACT NO PW-597
 NOT IN THIS CONTRACT

182
 181
 180

9303