

STREET PAVING PLAN
NAME OF STREET: ARDMORE AVE. 60 FT. W.D.
FROM: SEVEN MILE RD.
TO: VASSAR
TYPE OF PAVEMENT: CLASS B' 8" MAC + 2 1/2" OIL AGG. WIDTH: 30
PETITION PAVING C.C. PROC. 8-22-39

INDEX NO. 64 87 TOPO. NO. 1
RECORD NO. 1

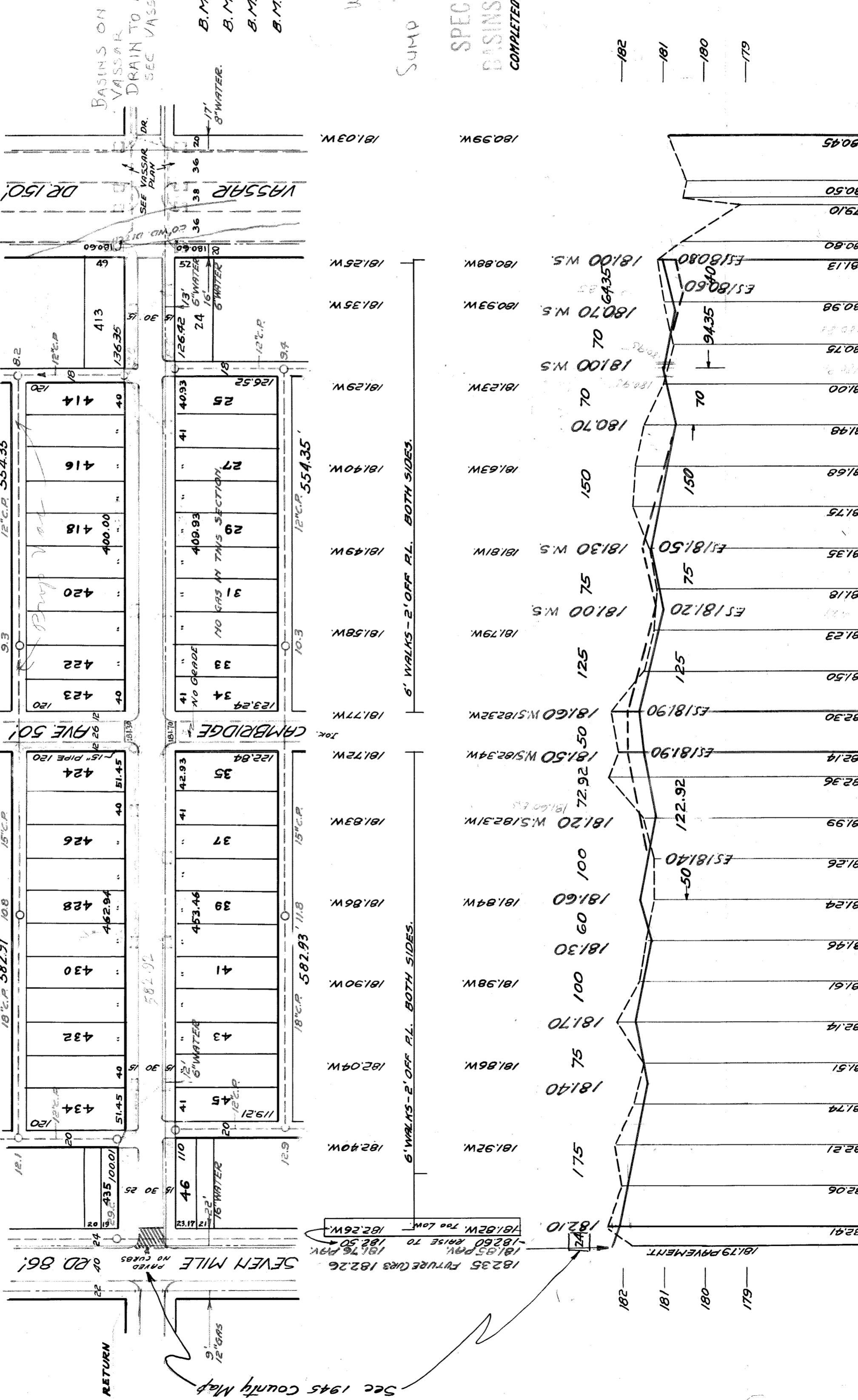
DESIGNED BY: F. J. Guillemont
DRAWN BY: J. R. B. B. B. B.
TRACED BY: J. R. B. B. B. B.
CHECKED BY: F. J. Guillemont
APPROVED: W. S. Wallace
ENGINEER OF STREETS
ASS'T. CITY ENGINEER

BOOK 1320 PAGE 1
DATE 2-21-39
VER. SCALE 1"=2'
HOR. SCALE 1"=100'
PLAN: RR GRADE: 1/4
CITY: RR LENGTH: 1.099.05
TOTAL ZL: 2.422.11

QUANTITIES	LOTS	CITY	LOTS	CITY
EXCAVATION				
STRAIGHT CURB NEW				
OLD CURB RESET				
CIRCULAR CURB				
PAVING				
CONCRETE BASE				

PLAN	PROFILE	COMPUTED
<u>RR</u>	<u>RR</u>	<u>1/4</u>
<u>1.099.05</u>	<u>1.099.05</u>	<u>1.099.05</u>

PROGRESS	DATE	FINISH
START		
FINISH		



INDEX NO.	TOPO. NO.	RECORD NO.
64 87	1	1

BENCH MARKS:
B.M. - D. N.W. INTERSECTION OF WALKS, - 181.918
N.W. COR. SEVEN MILE & ARDMORE - 181.918
B.M. - D. N.W. INTERSECTION OF WALKS - 181.046
N.W. COR. VASSAR & ARDMORE - 181.046
B.M. - SPIKE IN POLE, - S.E. COR. ST. MARTIN'S - 182.330
D.E. & ARDMORE - 182.330
B.M. - TRACK SPIKE IN 24" POPLAR TREE, - 130' N. OF PEMBROKE, 1/2 BLOCK W. OF LESURE - 182.920

BASINS ON VASSAR DRAIN TO NORTH SEE VASSAR MAP
EXISTING POOLS & BASINS:
NEW

6" WALKS - 2' OFF PL. BOTH SIDES.
Sump Basins Not In.

SPECIAL PIPE BASINS BY W.P.A. COMPLETED JAN 24-1940 - M.T.I.

DRAINAGE COMPLETED...
PAVING COMPLETED... 10/26/40

Sec 1945 County Map
CONC. RETURN
18235 FUTURE CURB 18226
18185 PAV. 18176 PAV.
18162W, Too Low - 18226W