

CONTRACT NO. RW 2085

DEPARTMENT OF PUBLIC WORKS DETROIT  
 CITY ENGINEER'S OFFICE --- DIVISION OF PAVING DESIGN  
 STREET PAVING PLAN  
**CAPRON ANTIETAM**  
 NAME OF STREET: **N.P.L. OF MAPLE**  
 FROM: **SEC. 30' N. OF N.P.L. OF MAPLE**  
 TO: **SEC. 30' N. OF N.P.L. OF MAPLE**  
 DATE: 10-8-10  
 SHEET NO. 27 OF 36  
 SHEET 12

BENCH MARKS  
 Hyd. N.E. cor. Russell & Chestnut  
 Hyd. S.E. cor. Riopelle & Chestnut  
 Hyd. S.E. cor. Orleans & Antietam

GRATIOT REDEVELOPMENT PROJECT

DESIGNED BY	Erickson
DRAWN BY	C.W. Cwiek
TRACED BY	Beinn
CHECKED BY	<i>[Signature]</i>
APPROVED	<i>[Signature]</i>

BOOK	1170	PAGE	4R
DATE	10-5-08	CHECKED	W.O.
DATE	10-5-08	REVIEWED	J.W.
PLAN	C.W.C.	PROFILE	J.L.
CHECKED	W.O.	GRADE	J.L.
LOT	526304	CITY	
TOTAL	105260	LENGTH	
CITY		LOTS	

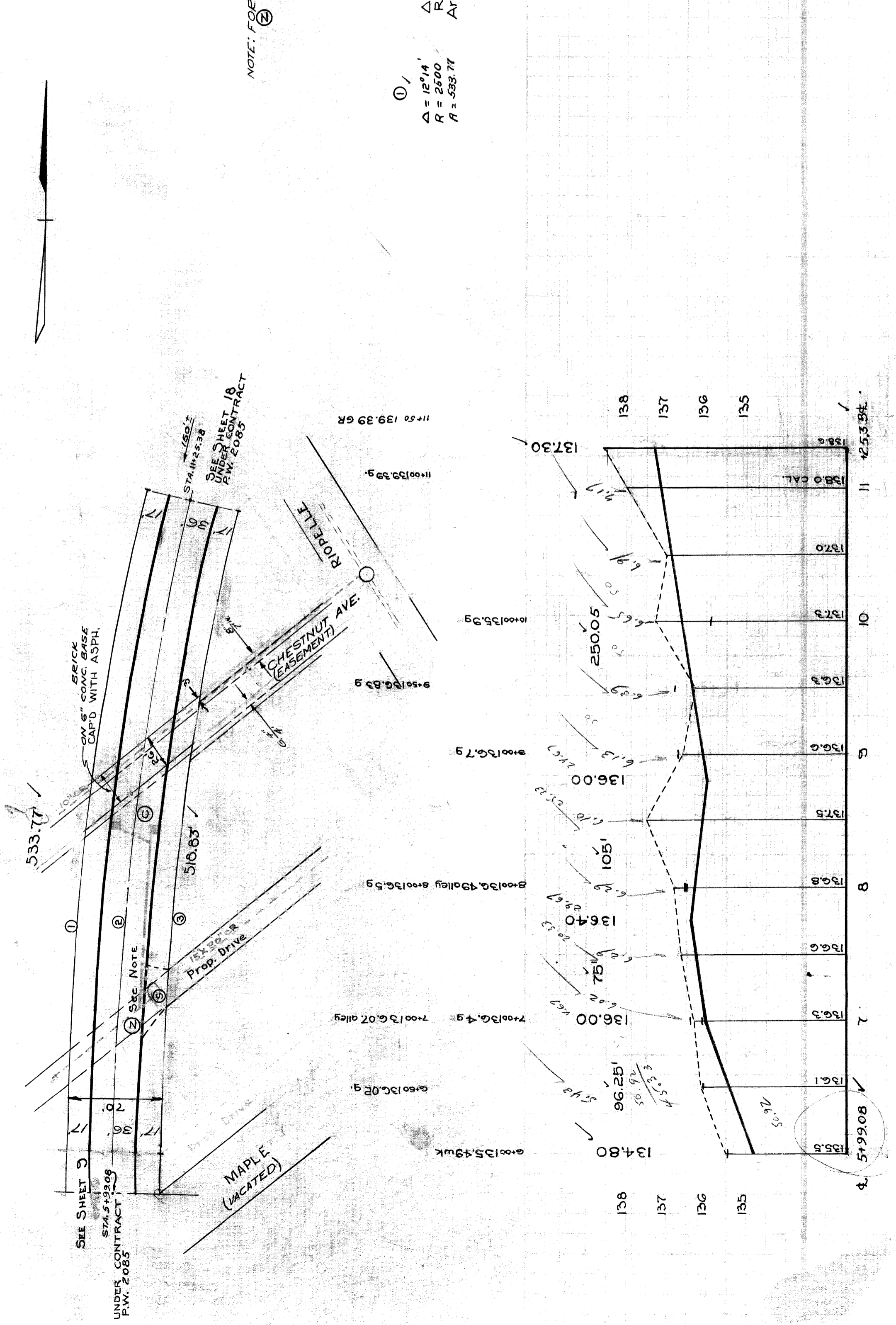
QUANTITIES	ESTIMATED	CITY	FINAL
EXCAVATION			
NEW CURB			
PAVING			
BRICK			
CONCRETE			
ADJUST			
CONSTRUCT			
ADJUST			
CONSTRUCT			

NOTE: BEFORE STARTING CONSTRUCTION CONTRACTOR MUST CHECK WITH UTILITIES FOR LOCATIONS OF EXISTING STRUCTURES WHETHER OR NOT INDICATED ON PLANS.

PLAN SCALE DISTORTED  
 LOTS & ALLEYS: 1"=60'  
 STREET WIDTHS: 1"=60'

DRAINAGE COMPLETED  
 PAVING COMPLETED  
**C.C. 3-1-55**

REVISIONS	DATE	BY
C-311A	C-300	C-307
C-325	C-324	C-733
C-326A	C-325	C-733
C-327	C-326	C-733A



UNDER CONTRACT P.W. 2085

SEE SHEET 3

STA. 11+25.38

SEE SHEET 18 UNDER CONTRACT P.W. 2085