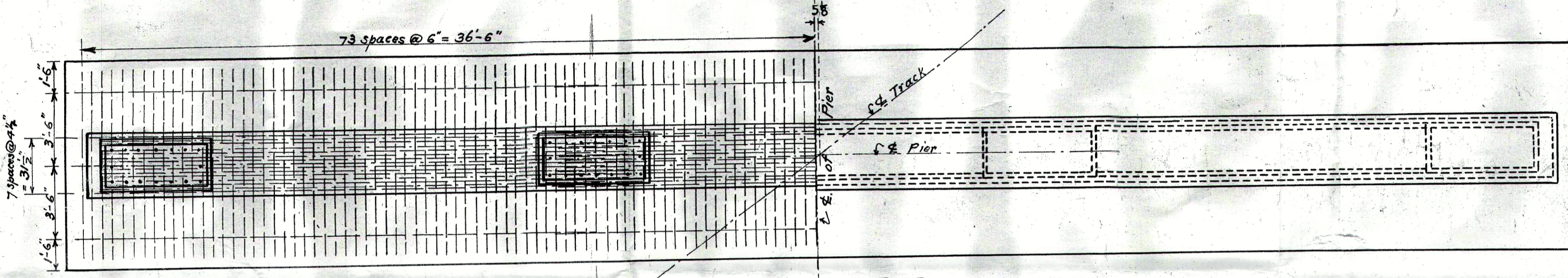
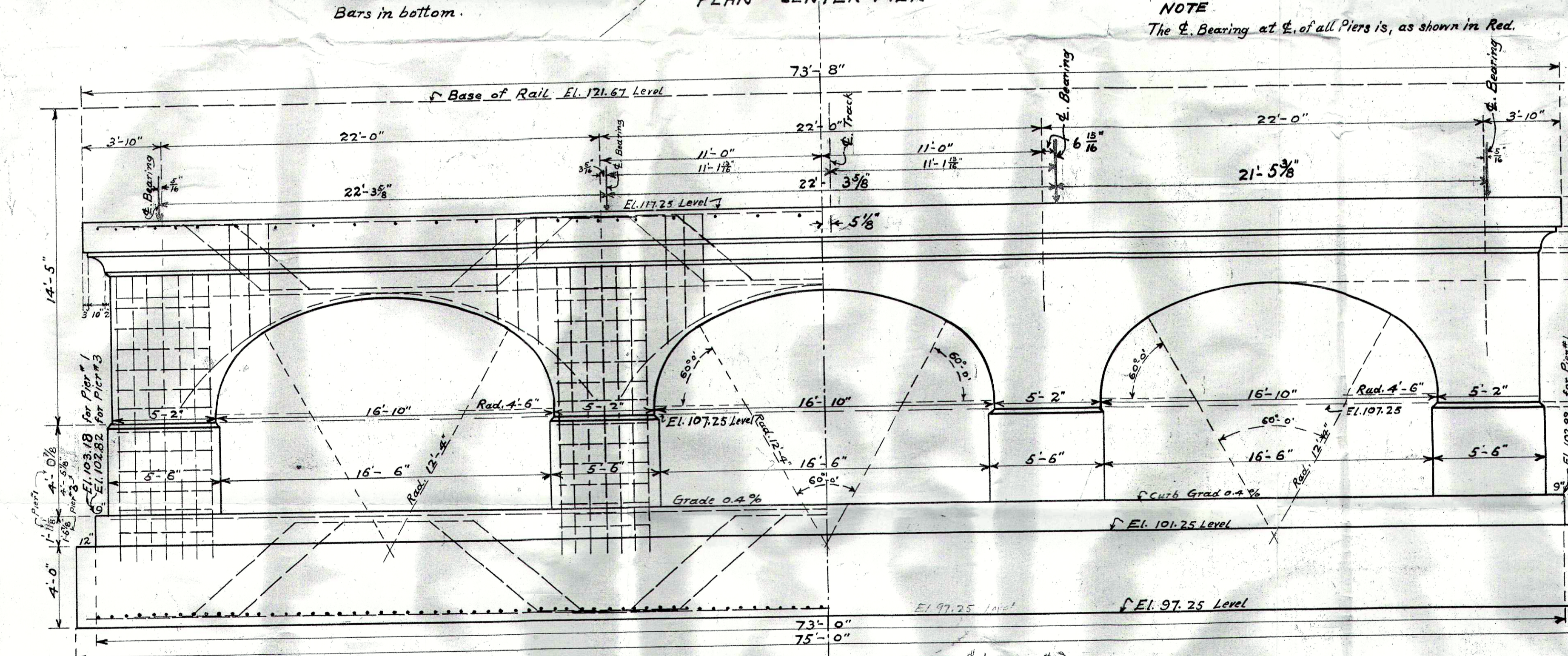


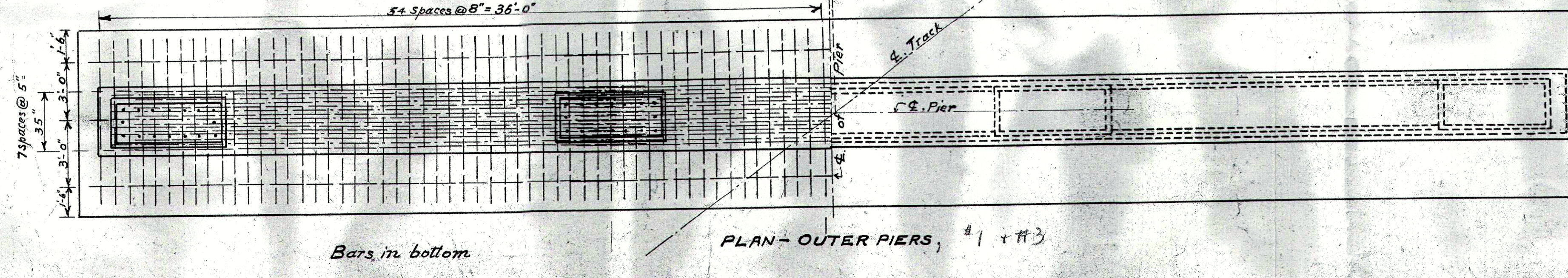
ELEVATION - CENTER PIER-



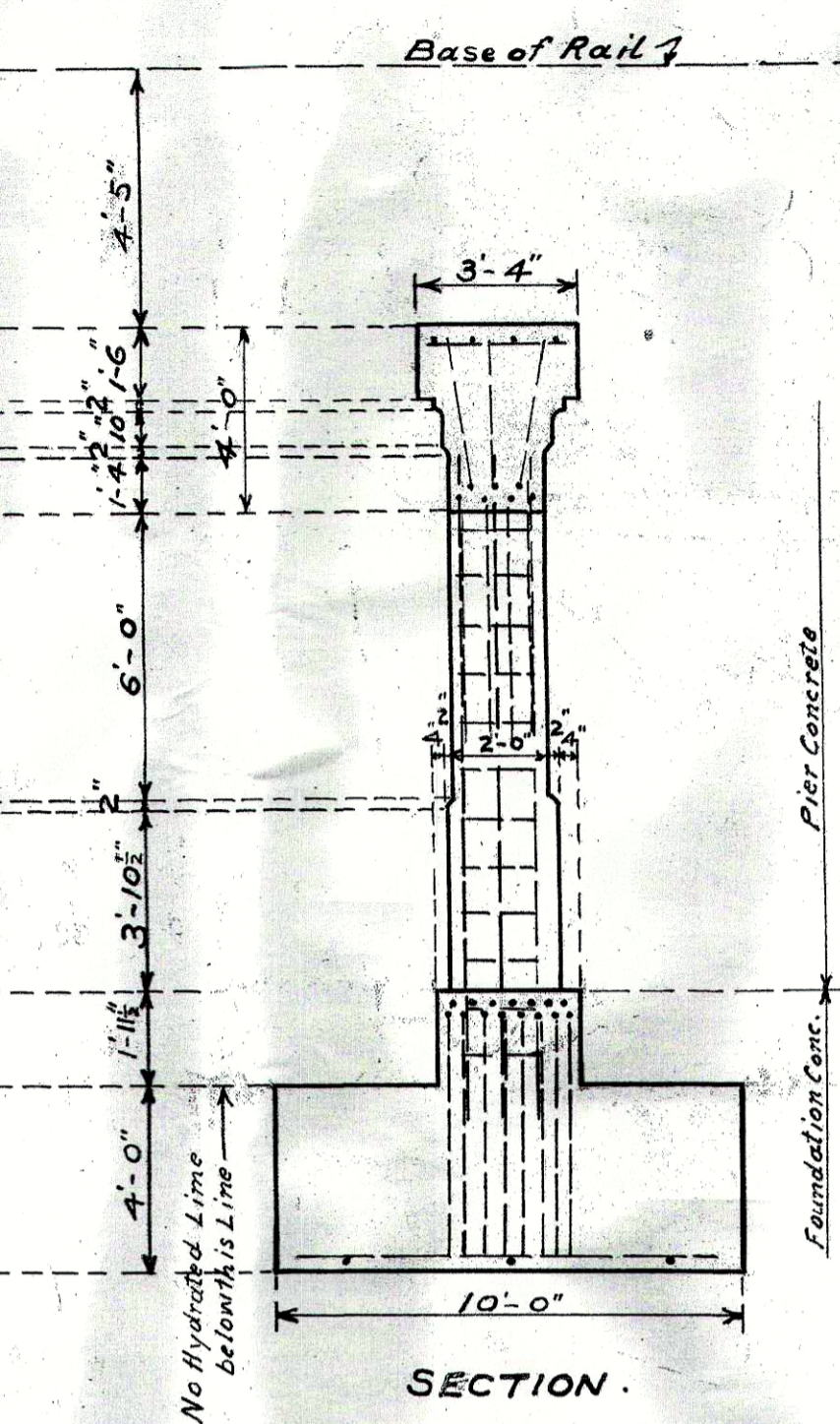
PLAN - CENTER PIER



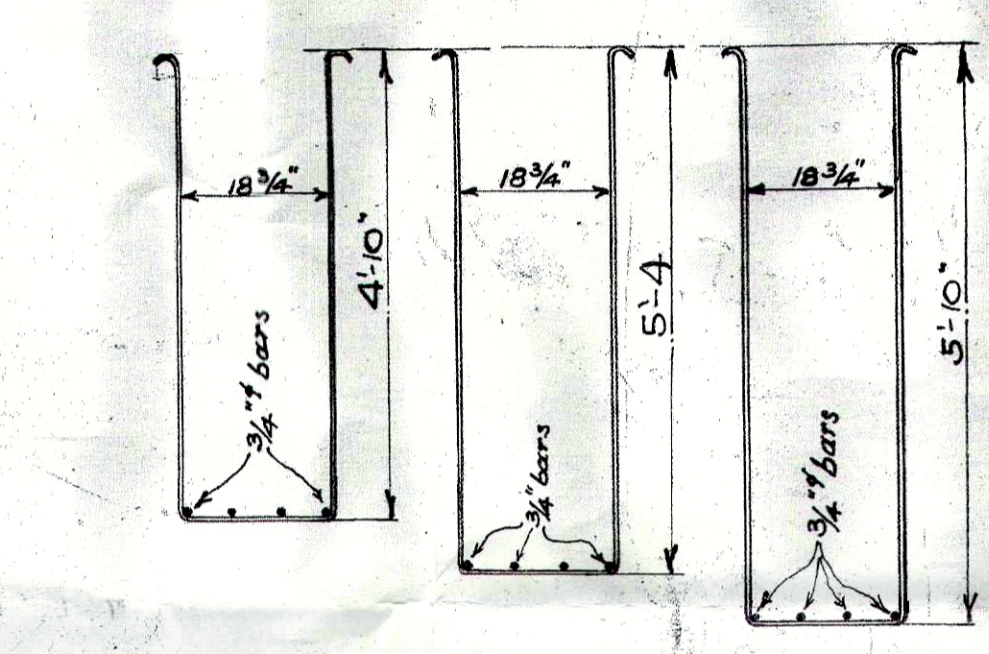
ELEVATION - OUTER PIERS, #1 + #3



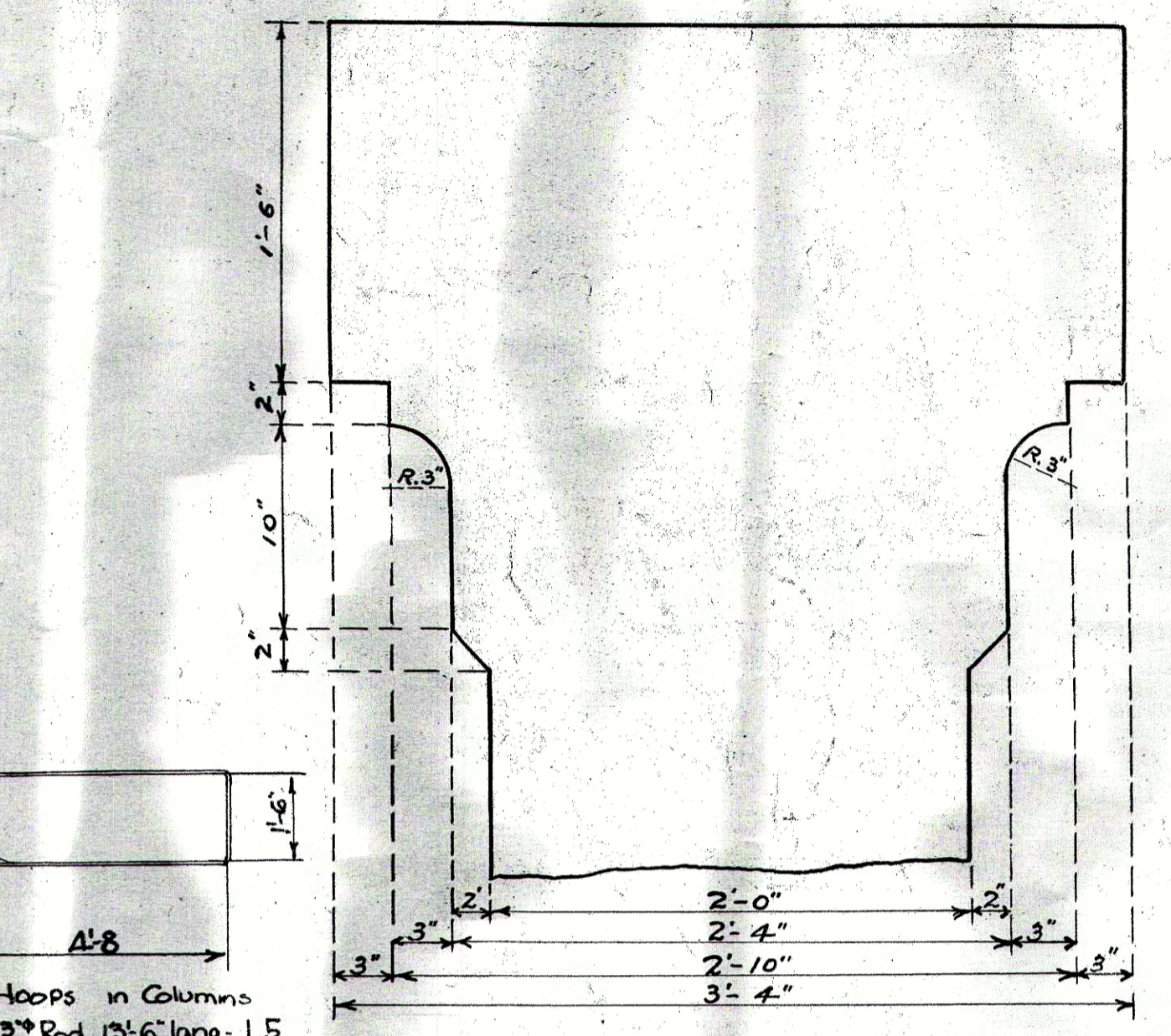
PLAN - OUTER PIERS, #1 + #3



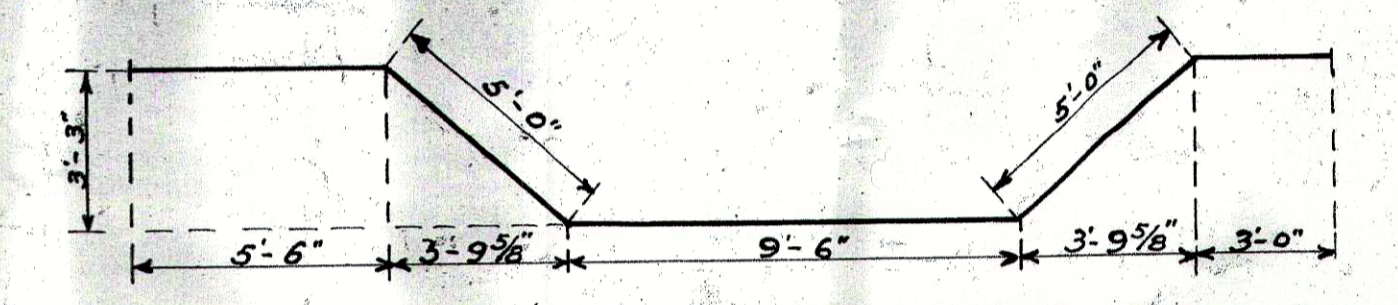
SECTION.



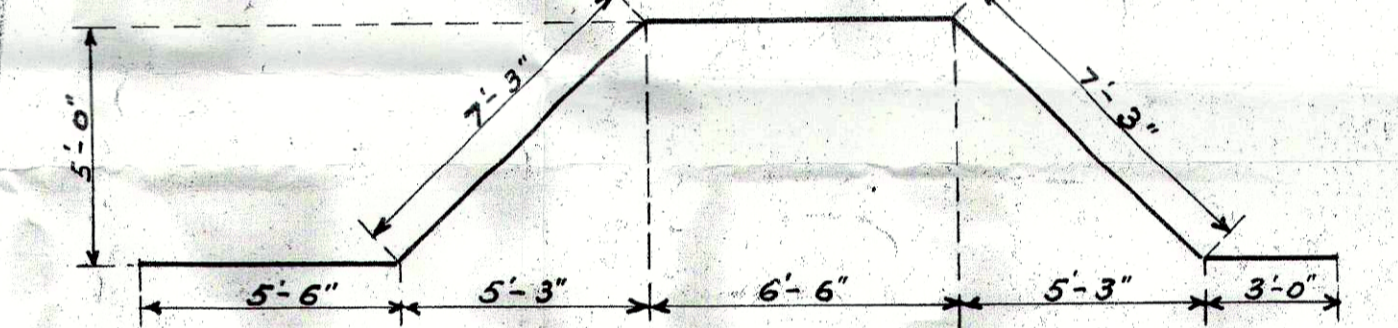
3/8" SHEARBARS - 12'-0", 13'-0" & 14'-0" LONG.



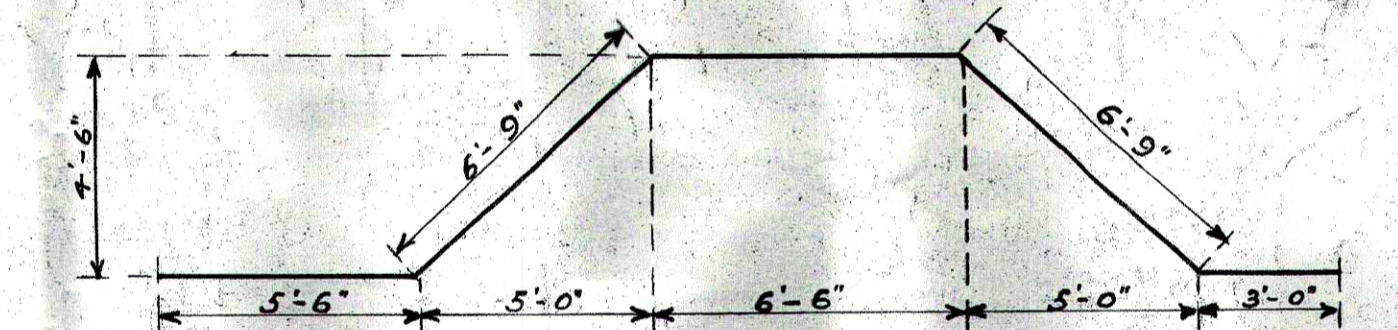
SECTION - TOP-BEAM. Scale 1/2" = 1'-0"



3/4" BENT BARS - 28'-0" LG. IN TOP BEAM, C5



1/4" BENT BARS - 29'-5" LG. IN FOOTING - CENTER PIER, N5



1/4" BENT BARS - 28'-6" LG. IN FOOTING - OUTER PIERS, U5.

CORRUGATED ROUND STEEL BARS									
IN CENTER PIER					IN ONE OUTER PIER				
LOCATION	NO.	LENGTH FT. IN.	DIST. APART CTR. TO CTR. IN.	REMARKS	LOCATION	NO.	LENGTH FT. IN.	DIST. APART CTR. TO CTR. IN.	REMARKS
TOP BEAM	R5	12 25 0	11 1/2	straight	TOP BEAM	R5	12 25 0	11 1/2	straight
"	C5	4 6 3 0	12 3/4	1/2 bent	"	C5	4 6 3 0	12 3/4	1/2 bent
"	C5	9 28 0	7 1/2	3/4 bent	"	C5	9 28 0	7 1/2	3/4 bent
"	D5	12 25 0	6	3/4 straight	"	D5	12 25 0	6	3/4 straight
OVER ARCHES	E5	12 25 0	6	3/4 Pt. of circle Red. R7	OVER ARCH	E5	12 25 0	6	3/4 Pt. of circle Red. R7
"	F5	6 12 0	3/8	Shearbars	"	F5	6 12 0	3/8	Shear bars
"	G5	6 13 0	3/8	"	"	G5	6 13 0	3/8	"
"	H5	6 14 0	3/8	"	"	H5	6 14 0	3/8	"
COLUMNS	K5	6 4 14 0	9	1 straight vert.	COLUMNS	K5	6 4 14 0	9	1 straight vert.
"	L5	4 8 13 6	12	3/8 bent Hoops	"	L5	4 8 13 6	12	3/8 bent Hoops
FOOTING	M5	21 25 0	4 1/2	1 1/2 straight	FOOTING	M5	21 25 0	4 1/2	1 1/2 straight
"	N5	24 29 6	4 1/2	1 1/2 bent	"	N5	24 28 6	5	1 1/2 bent
"	O5	4 7 9 0	6	1 straight	"	O5	11 0 8 0	8	1 straight
"	S5	9 26 0	4 2 1/2	"	"	S5	9 26 0	3 6 1/2	"

GENERAL NOTES.

Foundation Concrete - 1:2 1/2:5 Mix.
 Pier Concrete - 1:2:4 Mix.
 Hydrated Lime - 10% by vol. to be added, except as noted.
 Specification - A.R.E.A. Specification for Plain and Reinforced Concrete 1921 Edition of Manual, p. 400.
 Reinforcing Rods - Corrugated Rounds to be lapped at least 18" at splices.

QUANTITIES

1 Center Pier and 2 Side Piers
 355.7 cu. yds. Foundation Concrete
 147.3 " " Pier Concrete
 3174 " " Reinforcing Rods.

WABASH RY.
 DETROIT DIV.
 DETROIT, MICH.
 WAYNE CO.
 PROPOSED CONCRETE PIERS.
 FORT STREET BOUL. X02 & 82073
 OFFICE OF THE CHIEF ENGINEER.
 SCALE 1/4" = 1'-0"
 JUNE-12-1924.
 REVISED JUNE-30-1924.
 A.W. July 22 - 24. S.F.L.
 Aug. 18 - 24.
 SHEET 5 OF 8
 Completed Jan. 1925
 S.M.S. 6-25-24