

- LEGEND**
- ⊙ Water Shut-off
  - ⊕ Gas Shut-off
  - ⊙ Tree
  - ⊙ Trolley Pole
  - ⊙ P.L.C. Public Lighting Comm. Pole
  - ⊙ Hydrant
  - ⊙ Water Gate

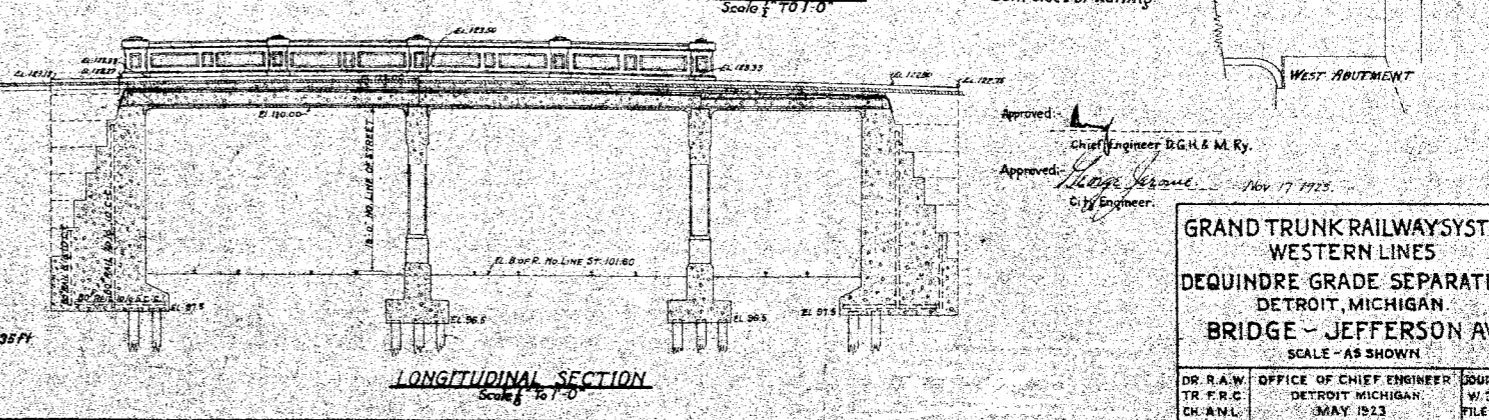
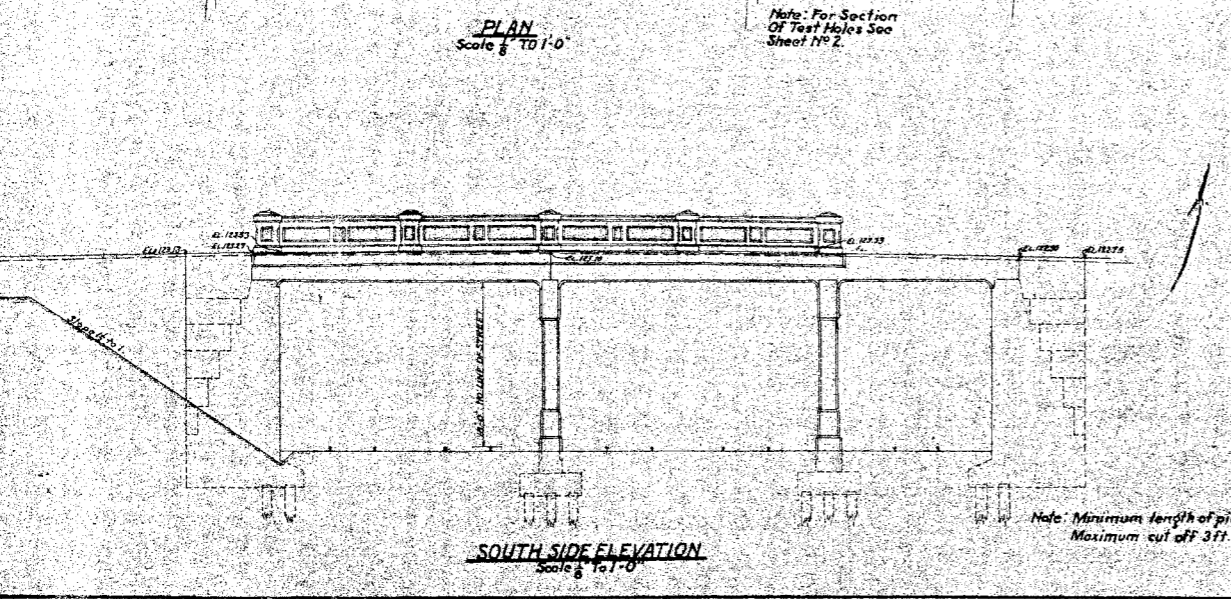
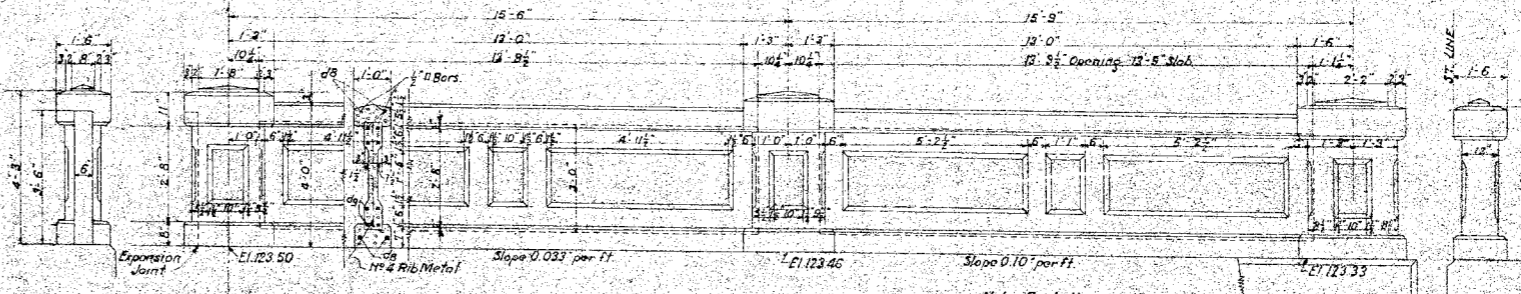
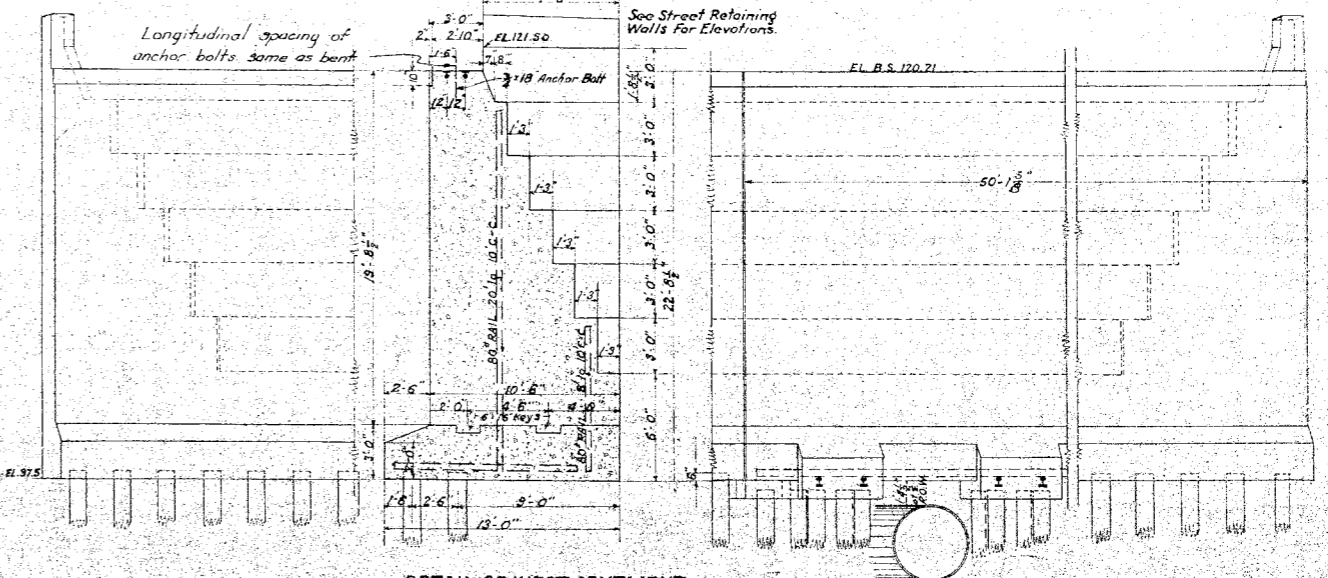
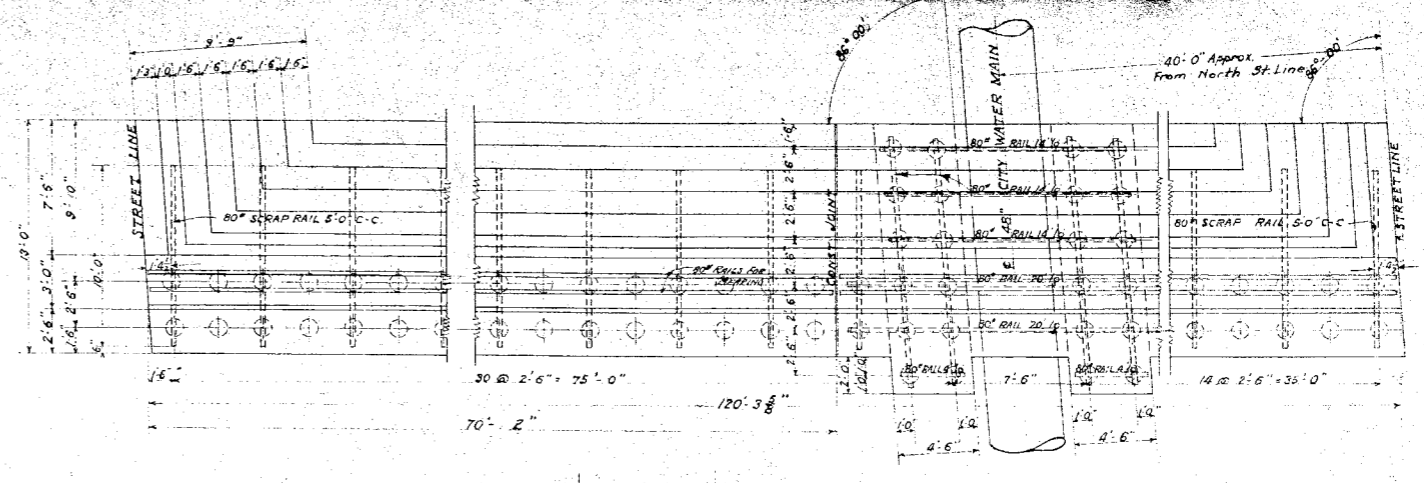
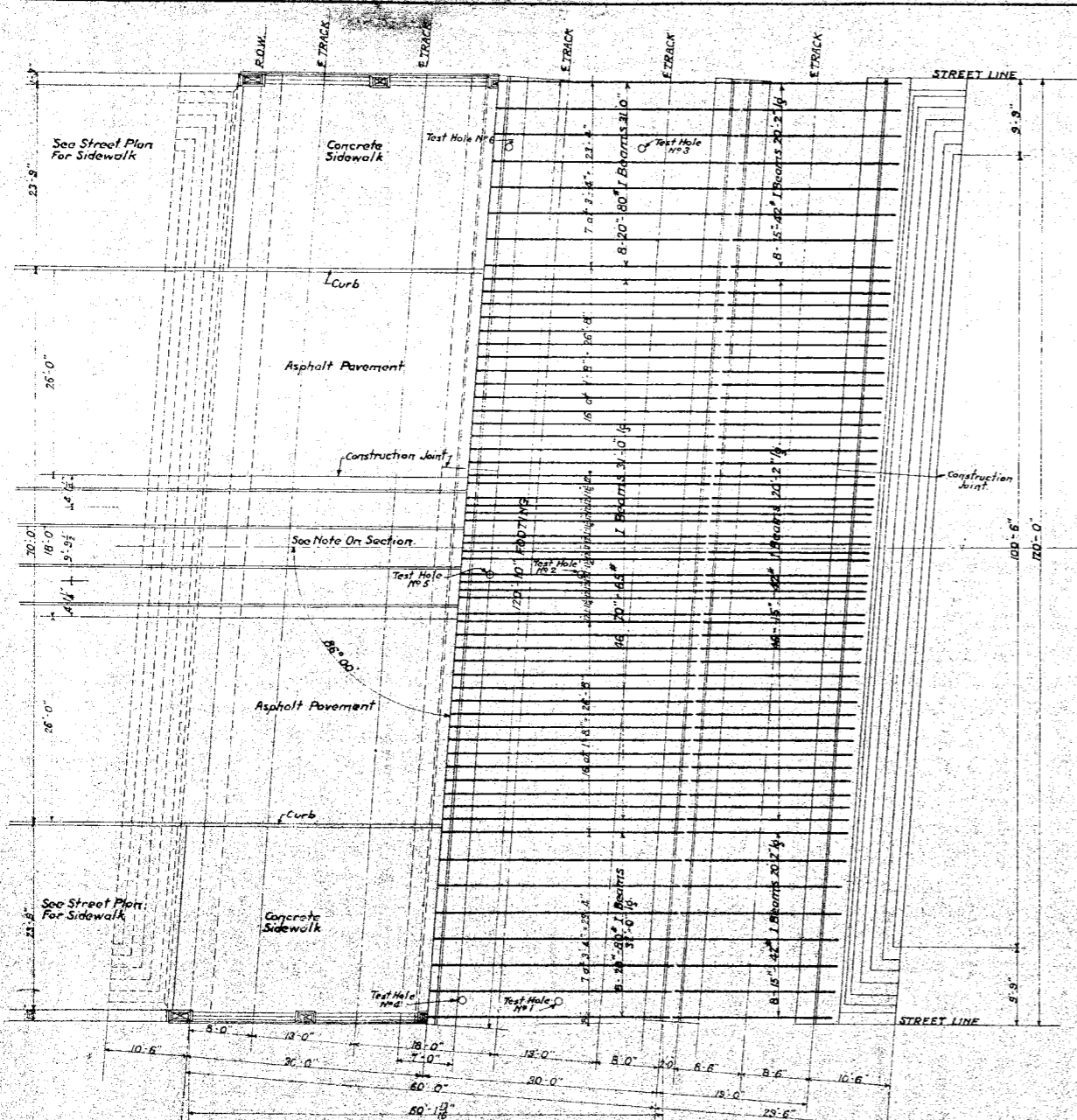
Approved: *[Signature]*  
 Chief Engineer D.G.H. & M. Ry  
 Approved: *[Signature]* May 17, 1923  
 City Engineer

**GRAND TRUNK RAILWAY SYSTEM  
 WESTERN LINES  
 DEQUINDRE GRADE SEPARATION  
 DETROIT, MICHIGAN.  
 GENERAL PLAN JEFFERSON AVE.**

Scale 1" = 20' except as noted.  
 DR. W.G.H. OFFICE OF CHIEF ENGINEER JOURNAL  
 TR. F.R.C. DETROIT, MICH. W. 3006  
 CH. A.M.A.L. MAY 1923. FILE  
 D-1-46-2

REVISED June 19, 1923

Note: Sidewalks between Orleans St and D.G.H. & M. Ry. to be 10' wide, except in front of Leonard C<sup>o</sup> Warehouse which will be full width as at present. Outside edge of 10' walks to be 3' from curb on both sides of street. Sidewalks east of Ry. to be rebuilt in present location and to be 8' in width. Sidewalks to be built in accordance with D.P.W. sidewalk specifications.

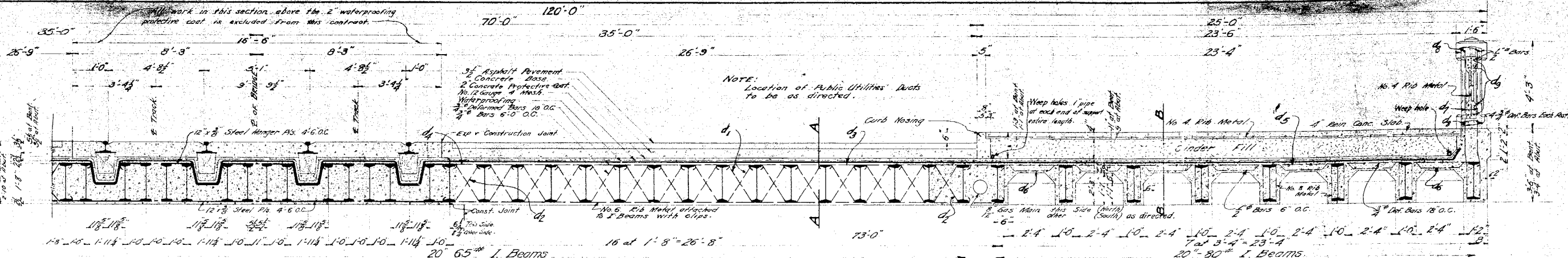


Approved: Chief Engineer B.G.H. & M. Ry.  
 Approved: City Engineer. Nov 17 1925

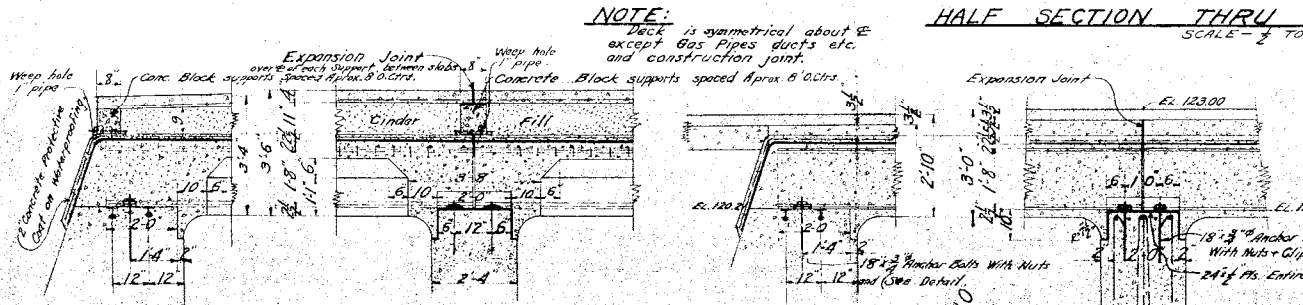
**GRAND TRUNK RAILWAY SYSTEM**  
**WESTERN LINES**  
**DEQUINDRE GRADE SEPARATION**  
**DETROIT, MICHIGAN**  
**BRIDGE - JEFFERSON AVE**  
 SCALE - AS SHOWN

DR. R.A.W.	OFFICE OF CHIEF ENGINEER	RECORDS
TR. F.R.C.	DETROIT, MICHIGAN	VI. 3616
CH. A.N.L.	MAY 1923	FILE

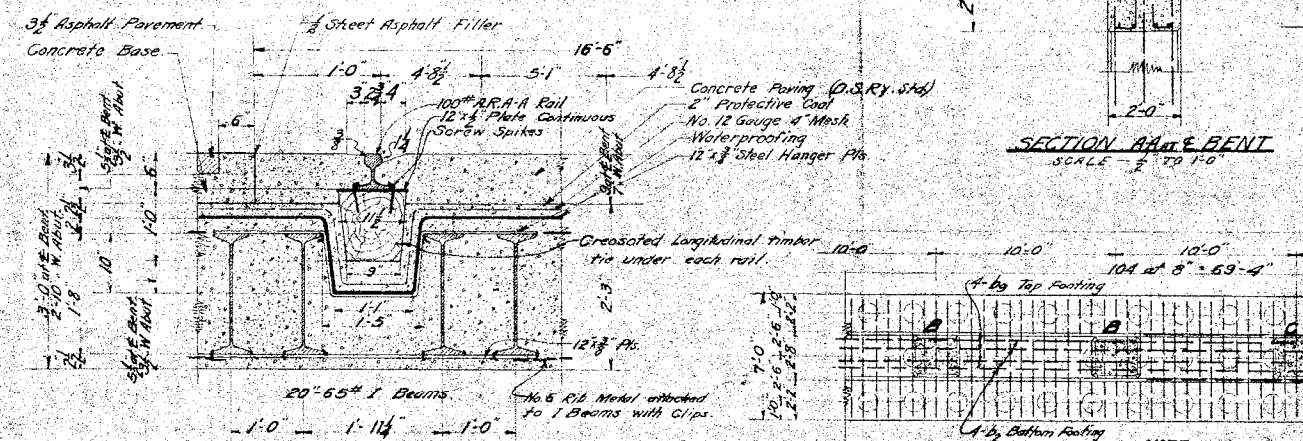
Revised June 15, 1923 Sheet 1 of 2



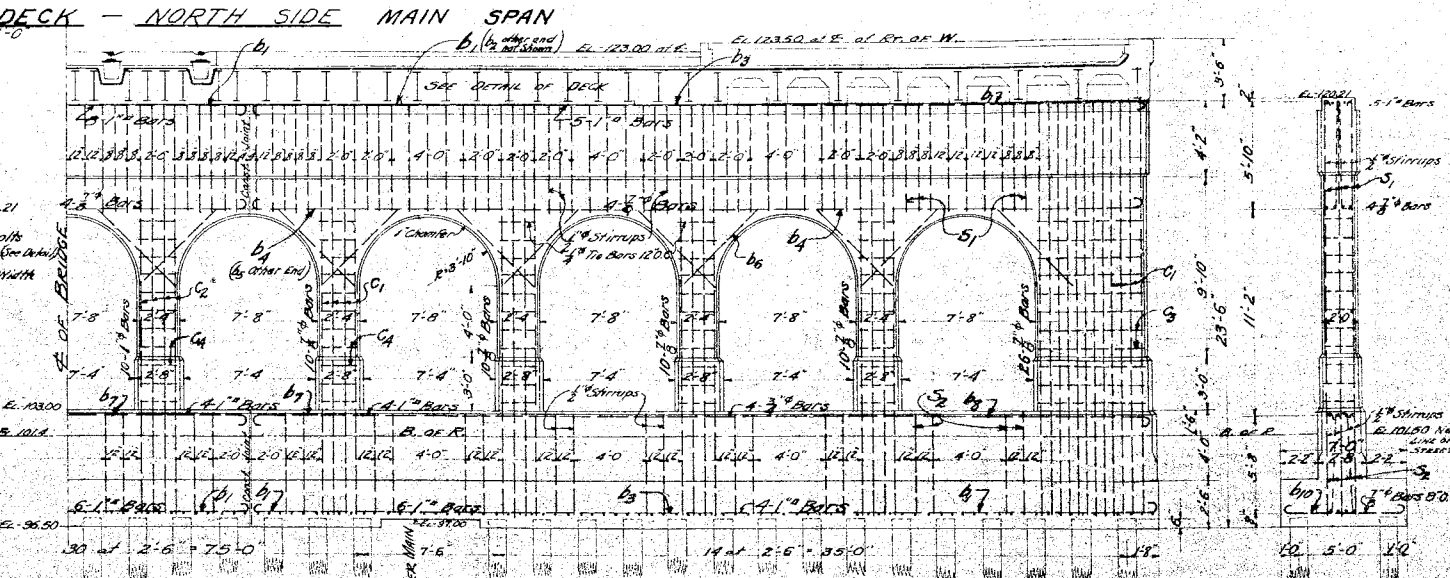
HALF SECTION THRU DECK - NORTH SIDE MAIN SPAN  
SCALE - 1/2" TO 1'-0"



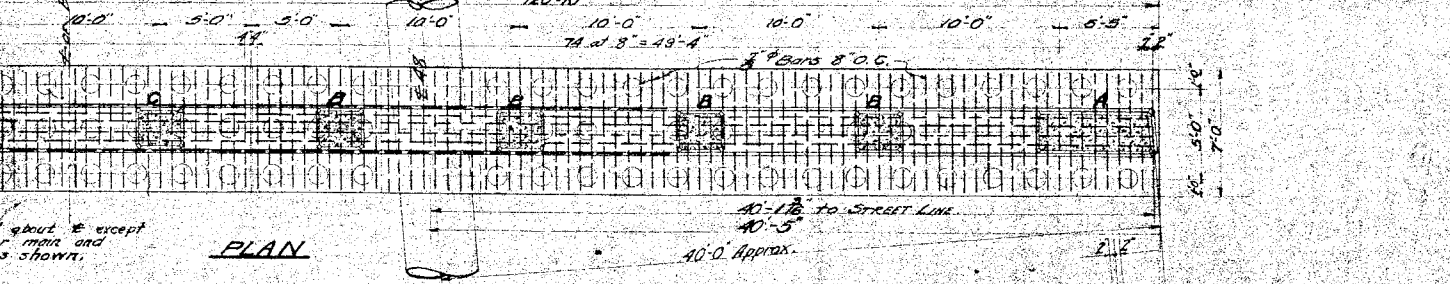
SECTION BB at ABUTMENT WEST OF E OF RIGHT OF WAY  
SECTION BB at BENT WEST OF E OF RIGHT OF WAY  
SECTION A-A at ABUTMENT  
SCALE - 1/2" IN TO 1'-0"



SECTION SHOWING CONSTRUCTION UNDER RAIL - MAIN SPAN  
SCALE - 1/2" TO 1'-0"

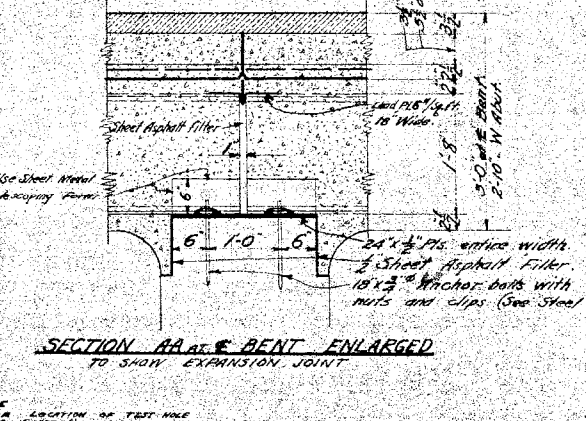


HALF ELEVATION OF BENT SHOWING REINFORCING - NORTH SIDE  
SCALE - 1/2" TO 1'-0"

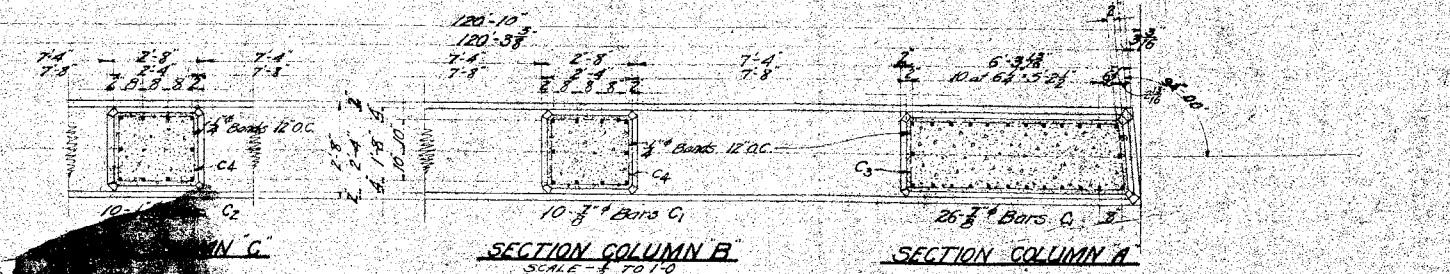


PLAN  
SCALE - 1/2" TO 1'-0"

TEST HOLE NO. 1	TEST HOLE NO. 2	TEST HOLE NO. 3	TEST HOLE NO. 4	TEST HOLE NO. 5	TEST HOLE NO. 6
100.0	100.0	100.0	100.0	100.0	100.0
90.0	90.0	90.0	90.0	90.0	90.0
80.0	80.0	80.0	80.0	80.0	80.0
70.0	70.0	70.0	70.0	70.0	70.0



SECTION AA at BENT ENLARGED TO SHOW EXPANSION JOINT  
SCALE - 1/2" TO 1'-0"



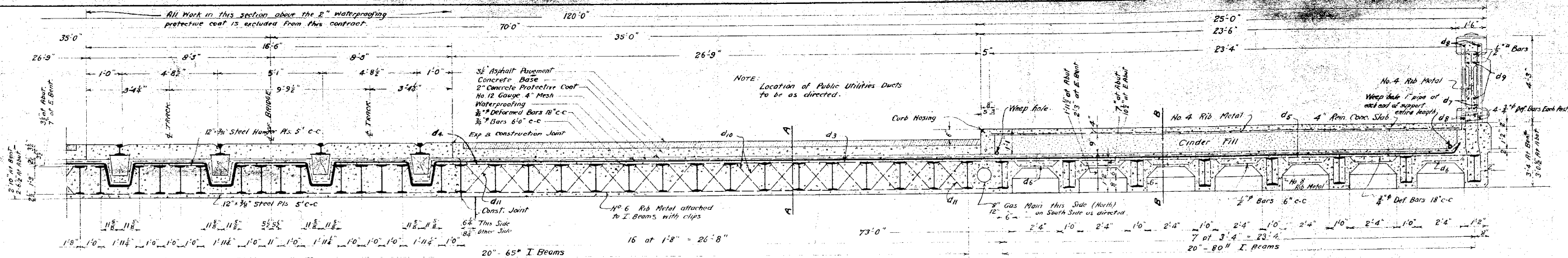
SECTION COLUMN B  
SECTION COLUMN A  
SCALE - 1/2" TO 1'-0"

Approved: *[Signature]*  
Chief Engineer, D.G.H. & M. Ry.  
Approved: *[Signature]*  
City Engineer  
Nov. 17, 1923

GRAND TRUNK RAILWAY SYSTEM  
WESTERN LINES  
DEQUINDRE GRADE SEPARATION  
DETROIT, MICHIGAN  
BRIDGE - JEFFERSON AVE.  
SCALE - AS SHOWN

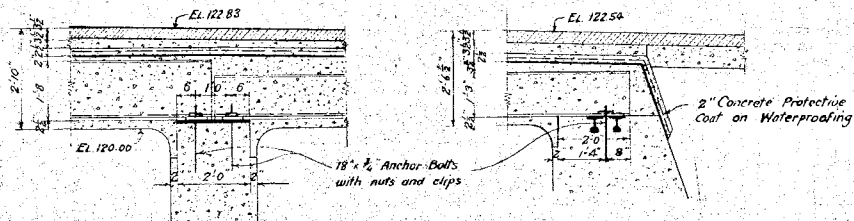
DR - RAW  
TR - RAW  
EN - ANL  
OFFICE OF CHIEF ENGINEER  
DETROIT, MICHIGAN  
MAY 1923  
JOURNAL NO.  
LW - 307  
FILE -



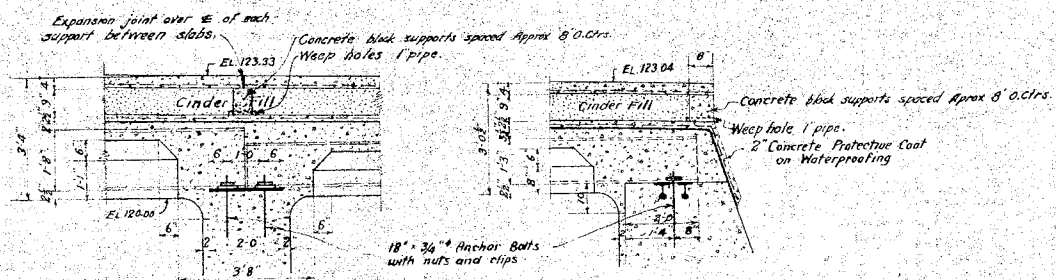


NOTE: Deck is symmetrical about & except Gas pipes, ducts, etc., and construction joint.

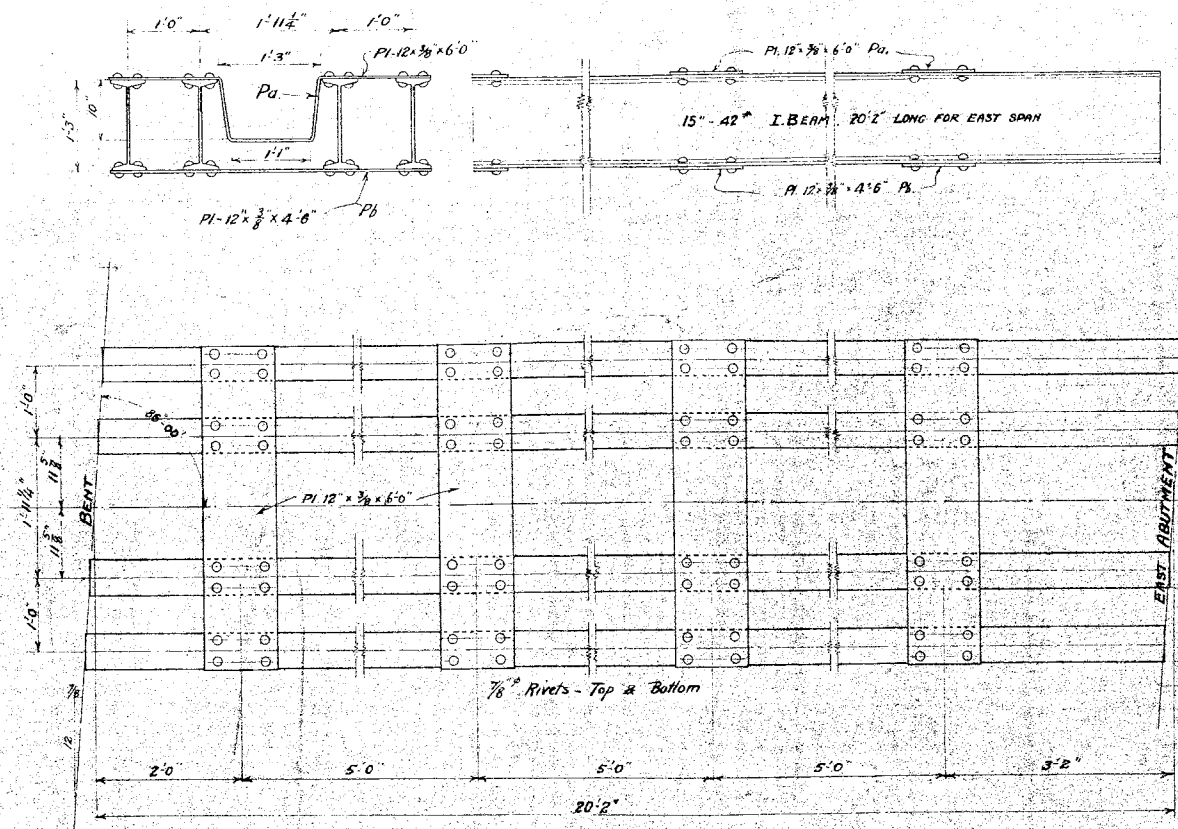
**HALF SECTION THRU DECK - NORTH SIDE**  
SCALE 1/2" = 1 FT.



**SECTION A-A THRU EAST BENT AND ABUTMENT**  
SCALE 1/2" = 1 FT.

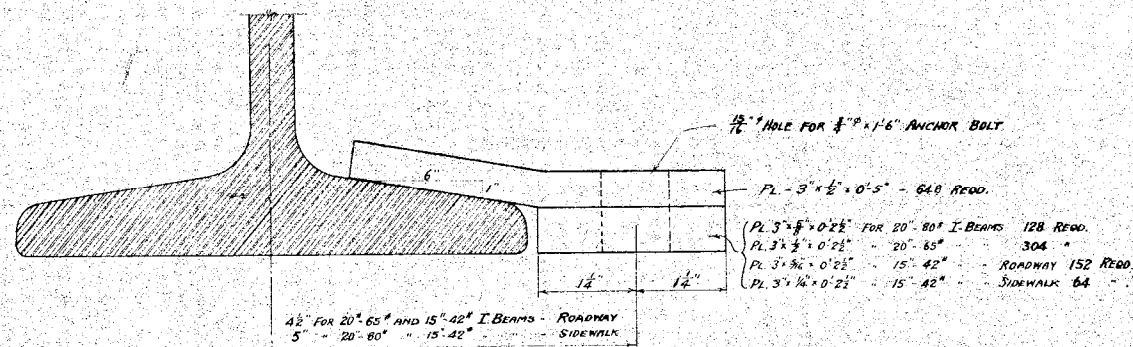


**SECTION B-B THRU EAST BENT AND ABUTMENT**  
SCALE 1/2" = 1 FT.



**DETAIL OF I BEAM SPAN FOR STREET RAILWAY**  
SCALE 1/4" = 1 FT.

4 Units required like above riveted complete for East Span. Material is included in Bill of Material.



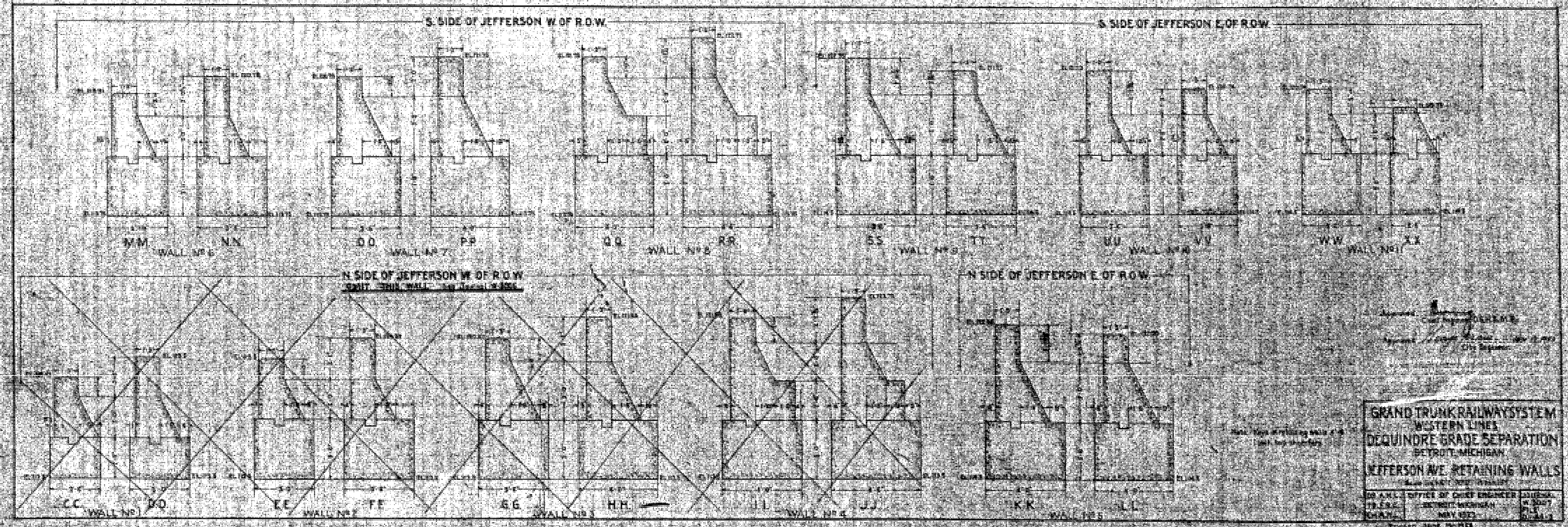
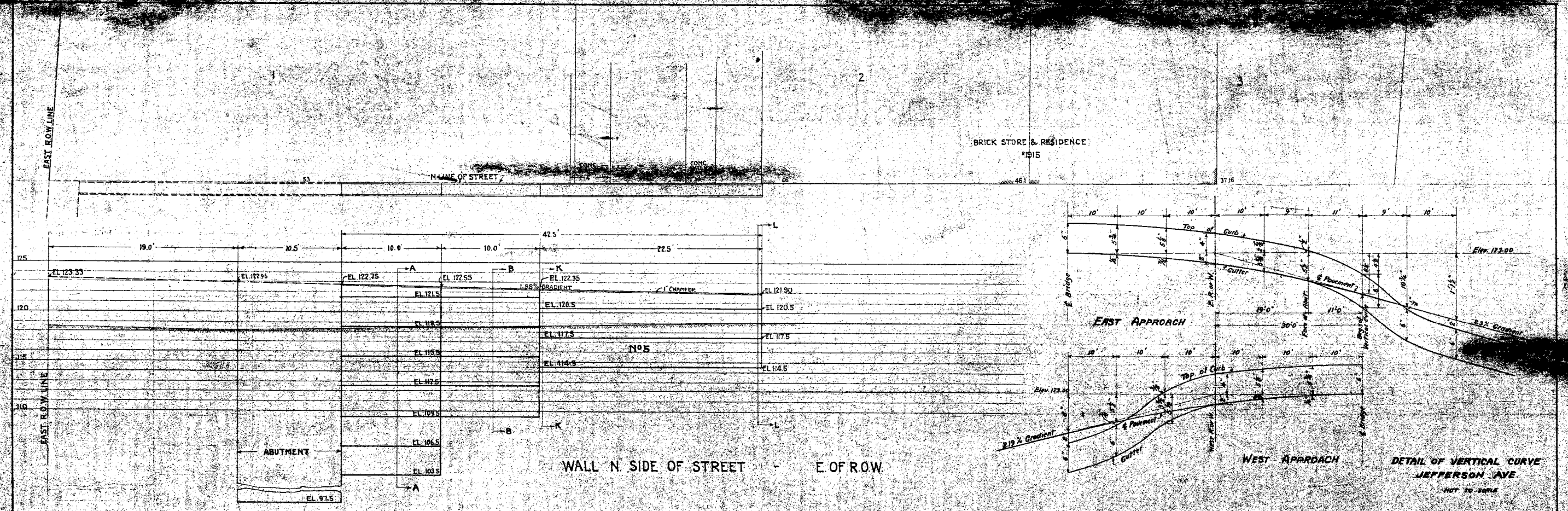
**DETAIL FOR I BEAM CLIPS**  
SCALE 1/4" = 1 FT.

Approved: *[Signature]*  
CHIEF ENGINEER D.G.H. & M.R.Y.

Approved: *[Signature]* Nov 17, 1923  
CITY ENGINEER

GRAND TRUNK RAILWAY SYSTEM  
WESTERN LINES  
DEQUINDRE GRADE SEPARATION  
DETROIT, MICHIGAN.  
BRIDGE-JEFFERSON AVE.  
SCALE - AS SHOWN

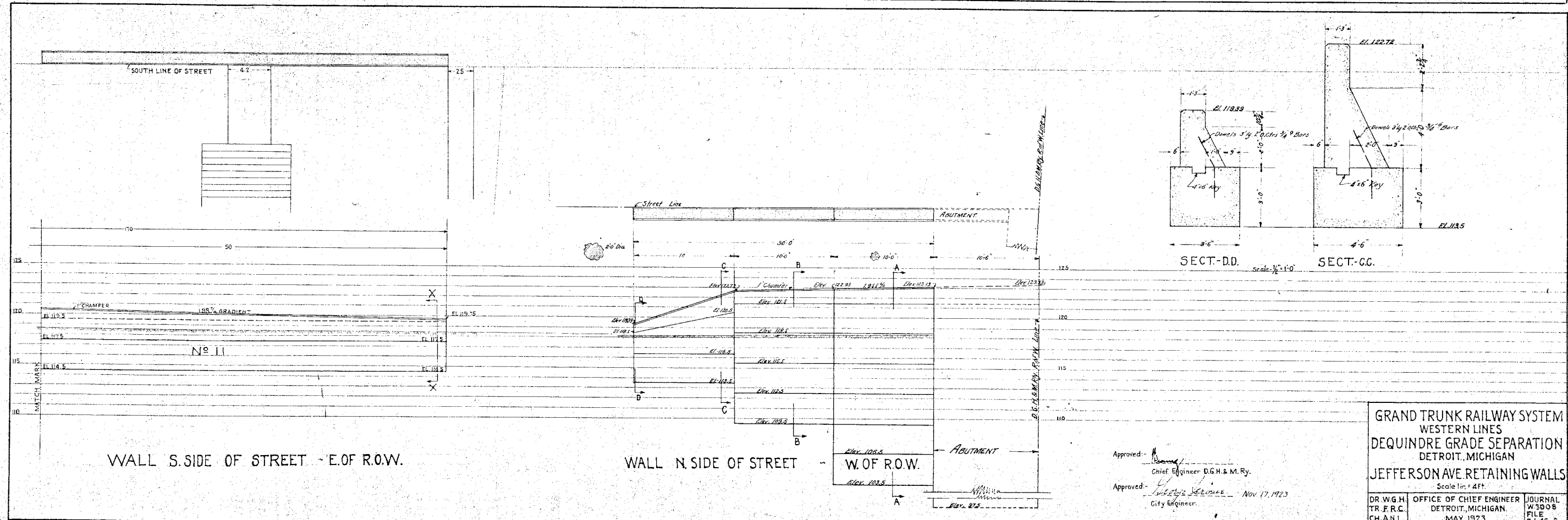
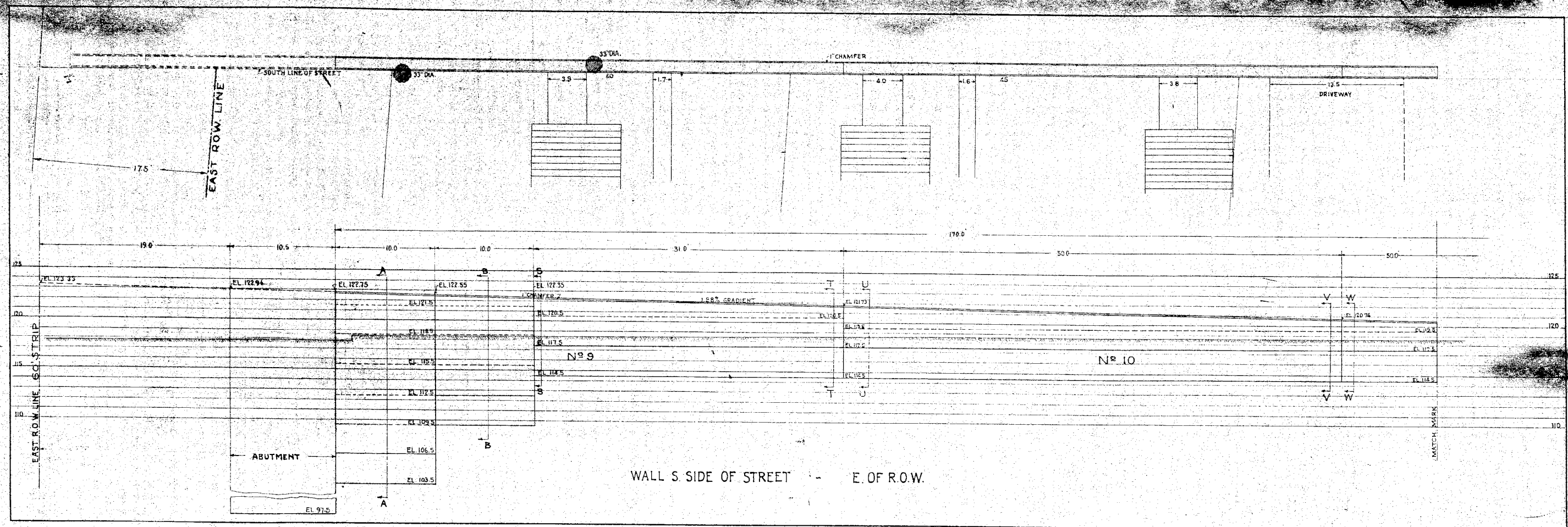
DR. R.A.W.	OFFICE OF CHIEF ENGINEER	JOURNAL No.
TR. W.G.H.	DETROIT, MICHIGAN	W-3018
CH. A.N.L.	JUNE 18 - 1923	FILE D-462



GRAND TRUNK RAILWAY SYSTEM  
 WESTERN LINES  
 DEQUINDRE GRADE SEPARATION  
 DETROIT, MICHIGAN  
 JEFFERSON AVE. RETAINING WALLS

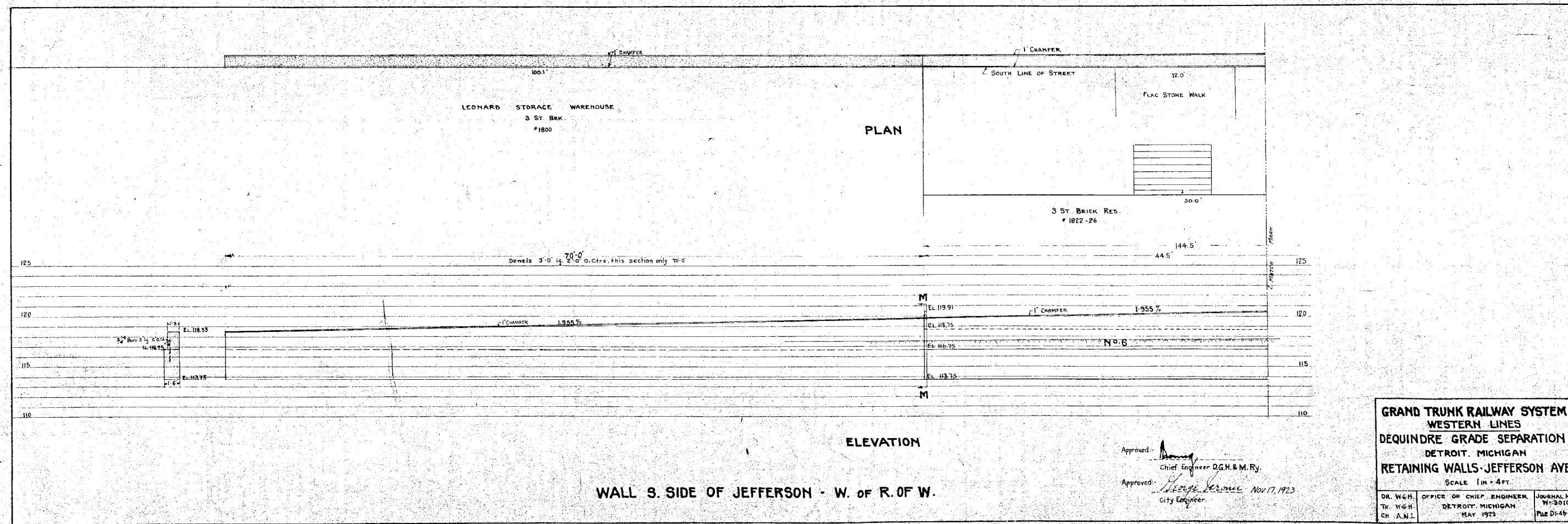
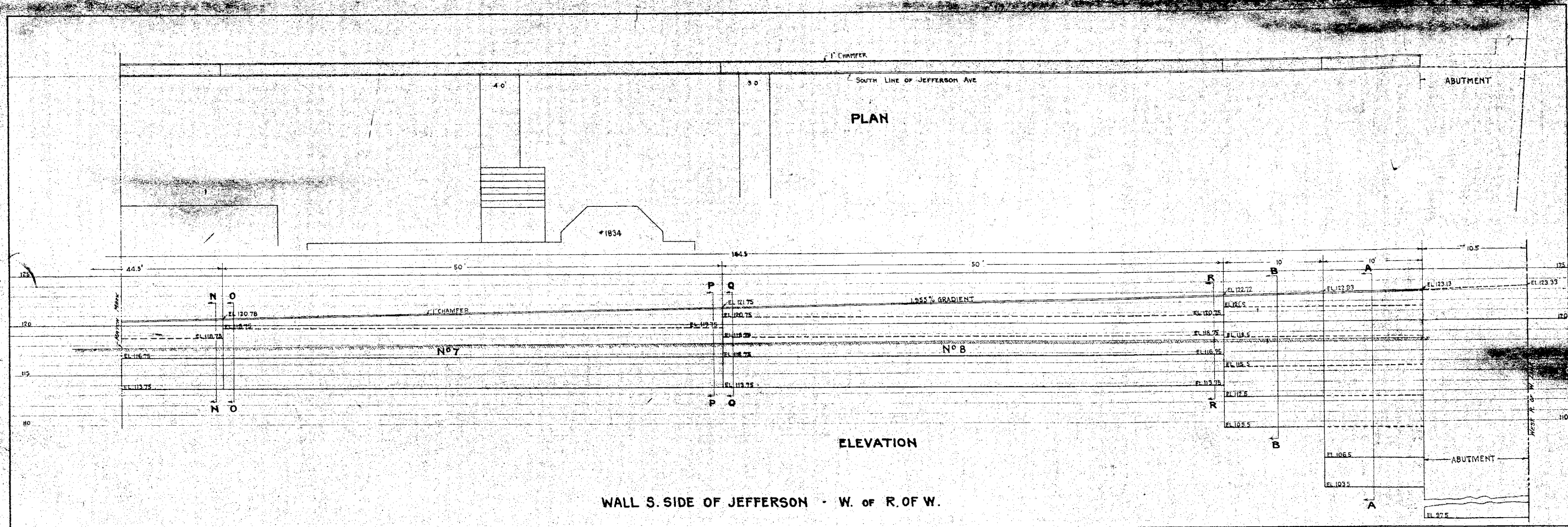
DESIGNED BY: [Signature]  
 CHECKED BY: [Signature]  
 APPROVED BY: [Signature]  
 CHIEF ENGINEER

NO. 4411 OFFICE OF CHIEF ENGINEER  
 DETROIT, MICHIGAN  
 MAY 1923



Approved: *[Signature]*  
 Chief Engineer D.G.H. & M. Ry.  
 Approved: *[Signature]* Nov 17, 1923  
 City Engineer.

GRAND TRUNK RAILWAY SYSTEM  
 WESTERN LINES  
 DEQUINDRE GRADE SEPARATION  
 DETROIT, MICHIGAN  
 JEFFERSON AVE. RETAINING WALLS  
 Scale 1" = 4' FT.  
 DR. W. G. H. TR. F. R. C. CH. A. N. L. OFFICE OF CHIEF ENGINEER DETROIT, MICHIGAN. MAY, 1923. JOURNAL W 3008 FILE D. 146-2  
 REVISED JUNE 19, 1923



Approved: *[Signature]*  
Chief Engineer D.G.H. & M. Ry.

Approved: *[Signature]* Nov 17, 1923  
City Engineer

**GRAND TRUNK RAILWAY SYSTEM  
WESTERN LINES  
DEQUINDRE GRADE SEPARATION  
DETROIT, MICHIGAN  
RETAINING WALLS-JEFFERSON AVE.**

SCALE 1 IN = 4 FT.

DR. W.G.H.	OFFICE OF CHIEF ENGINEER	JOURNAL No.
TR. W.G.H.	DETROIT, MICHIGAN	11-3910
CH. A.N.L.	MAY 1923	FILE D1-462