



NOT TO SCALE

THIS DRAWING SHOULD BE USED FOR REFERENCE ONLY

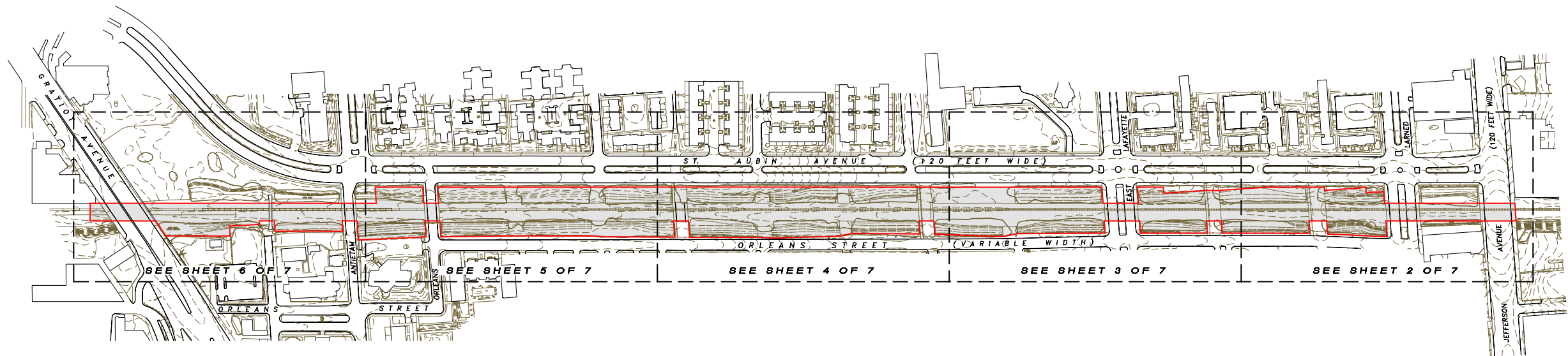
SEE SHEETS 2 THRU 7 FOR DETAILED INFORMATION AND LEGAL DESCRIPTIONS

# A.L.T.A./A.C.S.M. LAND TITLE SURVEY

## OF THE GRAND TRUNK WESTERN RAILROAD PROPERTIES LYING BETWEEN THE SOUTHERLY LINE OF JEFFERSON AVE. AND RAILROAD MILE MARKER 1.77

(DATED: JUNE 11, 2001)

LEGEND	
	SQUARE CATCH BASIN
	SIGN
	FIRE HYDRANT
	TRAFFIC LIGHT
	LIGHTPOLE
	MANHOLE
	MONITOR WELL
	UTILITY POLE
	DECIDUOUS TREE
	CONIFEROUS TREE
	INDICATES AREA IN WHICH THE CITY OF DETROIT RETAINS BRIDGE RIGHTS SHOWN ON SHEETS 2 THRU 6
	INDICATES AREA OWNED BY THE G.T.W.R.R. AS SHOWN ON THIS SHEET
	BLOCK OR SECTION NUMBER OF UNDERLYING SUBDIVISION



### SURVEYOR'S CERTIFICATION

I, MARTIN C. DUNN, HEREBY CERTIFY TO:

THE CITY OF DETROIT DOWNTOWN DEVELOPMENT AUTHORITY, AND LAWYERS TITLE INSURANCE CORPORATION:

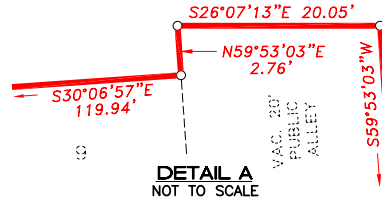
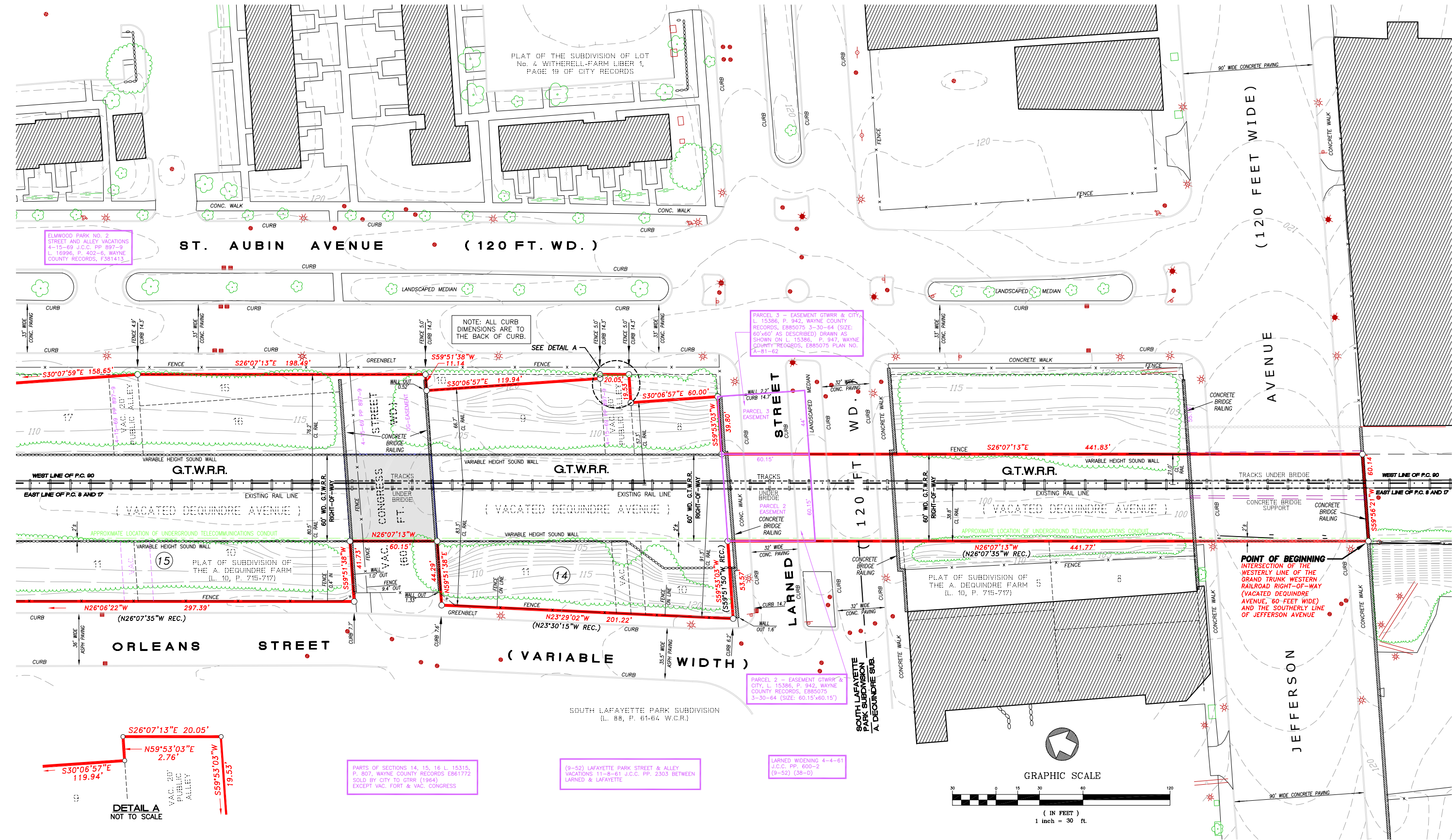
THAT THIS MAP AND THE SURVEY ON WHICH IT IS BASED WERE MADE (i) IN ACCORDANCE WITH "MINIMUM STANDARD DETAIL REQUIREMENTS FOR ALTA/ACSM LAND TITLE SURVEYS", JOINTLY ESTABLISHED AND ADOPTED BY ALTA AND ACSM IN 1992, AND INCLUDES ITEMS 1, 2, AND 7 OF TABLE A THEREOF, AND (ii) PURSUANT TO THE ACCURACY STANDARDS (AS ADOPTED BY ALTA AND ACSM AND IN EFFECT ON THE DATE OF THIS CERTIFICATION) OF AN "URBAN SURVEY."

METCO SERVICES, INC.

DATE: \_\_\_\_\_

By: MARTIN C. DUNN, SENIOR ASSOCIATE  
PROFESSIONAL SURVEYOR #30081

DATE	REVISED	DATE	BY	DRAWN BY:	 1273 LIBRARY, DETROIT, MI 48226 TEL - (313) 961-6200 • FAX (313) 961-1698 12504 STEPHENS, WARREN, MI 48089 TEL - (586) 755-6770 • FAX (586) 755-6774 www.metcoservices.com	<b>DEQUINDRE CORRIDOR</b>	<b>ALTA/ACSM LAND TITLE SURVEY</b> CLIENT: ECONOMIC GROWTH CORPORATION	JOB NUMBER
06/11/01				CHECK BY:				98-061
SCALE				BOOK NO.:				SHEET NUMBER
NONE				PAGE NO.:				1 OF 7



DATE	REVISED	DATE	BY	DRAWN BY:
06/11/01				JRB
SCALE				CHECK BY:
1" = 30'				SRJ
				BOOK NO.:
				NA
				PAGE NO.:
				NA

**METCO**  
SERVICES, INC.

1273 LIBRARY, DETROIT, MI 48226  
TEL - (313) 961-4580 • FAX (313) 961-1698

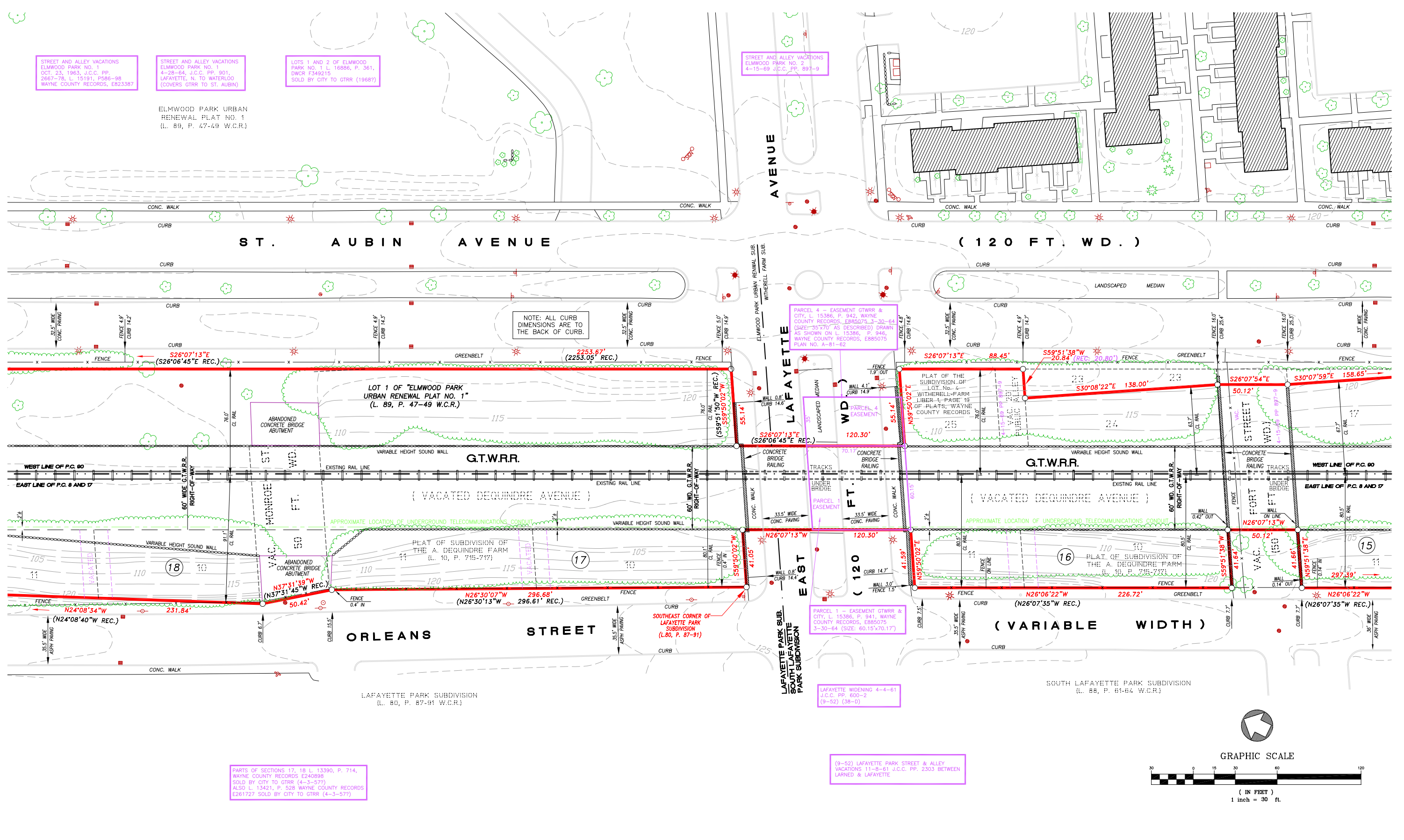
12504 STEPHENS, WARREN, MI 48089  
TEL - (588) 755-6770 • FAX (588) 755-5774  
www.metcoservices.com

DEQUINDRE CORRIDOR

ALTA/ACSM LAND TITLE SURVEY

CLIENT: ECONOMIC GROWTH CORPORATION

JOB NUMBER
98-061
SHEET NUMBER
2 OF 7



STREET AND ALLEY VACATIONS  
ELMWOOD PARK NO. 1  
OCT. 23, 1963, J.C.C. PP.  
2667-78, L. 15191, P586-98  
WAYNE COUNTY RECORDS, E823387

STREET AND ALLEY VACATIONS  
ELMWOOD PARK NO. 1  
4-28-64, J.C.C. PP. 901,  
LAFAYETTE, N. TO WATERLOO  
(COVERS GTRR TO ST. AUBIN)

LOTS 1 AND 2 OF ELMWOOD  
PARK NO. 1, L. 16886, P. 361,  
DWCR F349215  
SOLD BY CITY TO GTRR (19687)

ELMWOOD PARK URBAN  
RENEWAL PLAT NO. 1  
(L. 89, P. 47-49 W.C.R.)

STREET AND ALLEY VACATIONS  
ELMWOOD PARK NO. 2  
4-15-69 J.C.C. PP. 897-9

NOTE: ALL CURB  
DIMENSIONS ARE TO  
THE BACK OF CURB.

LOT 1 OF "ELMWOOD PARK  
URBAN RENEWAL PLAT NO. 1"  
(L. 89, P. 47-49 W.C.R.)

PARCEL 4 - EASEMENT GTWRR &  
CITY, L. 15386, P. 942, WAYNE  
COUNTY RECORDS, E885075, 1-30-64  
(SIZE: 35'70" AS DESCRIBED) DRAWN  
AS SHOWN ON L. 15386, P. 946,  
WAYNE COUNTY RECORDS, E885075  
PLAN NO. A-81-62

PLAT OF THE  
SUBDIVISION OF  
LOT NO. 4  
WITHRELL-FARM  
LIBER 4, PAGE 19  
OF PLATS, WAYNE  
COUNTY RECORDS

ABANDONED  
CONCRETE BRIDGE  
ABUTMENT

PLAT OF SUBDIVISION OF  
THE A. DEQUINDRE FARM  
(L. 10, P. 715-717)

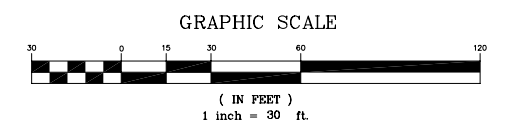
SOUTHEAST CORNER OF  
LAFAYETTE PARK  
SUBDIVISION  
(L.80, P. 87-91)

PARCEL 1 - EASEMENT GTWRR &  
CITY, L. 15386, P. 941, WAYNE  
COUNTY RECORDS, E885075  
3-30-64 (SIZE: 60.15'x70.17')

SOUTH LAFAYETTE PARK SUBDIVISION  
(L. 88, P. 61-64 W.C.R.)

PARTS OF SECTIONS 17, 18 L. 13390, P. 714,  
WAYNE COUNTY RECORDS E240898  
SOLD BY CITY TO GTRR (4-3-57)  
ALSO L. 13421, P. 528 WAYNE COUNTY RECORDS  
E261727 SOLD BY CITY TO GTRR (4-3-57)

(9-52) LAFAYETTE PARK STREET & ALLEY  
VACATIONS 11-9-61 J.C.C. PP. 2303 BETWEEN  
LARNED & LAFAYETTE



DATE	REVISED	DATE	BY	DRAWN BY:
06/11/01				JRB
SCALE				CHECK BY:
1" = 30'				SRJ
				BOOK NO.:
				NA
				PAGE NO.:
				NA

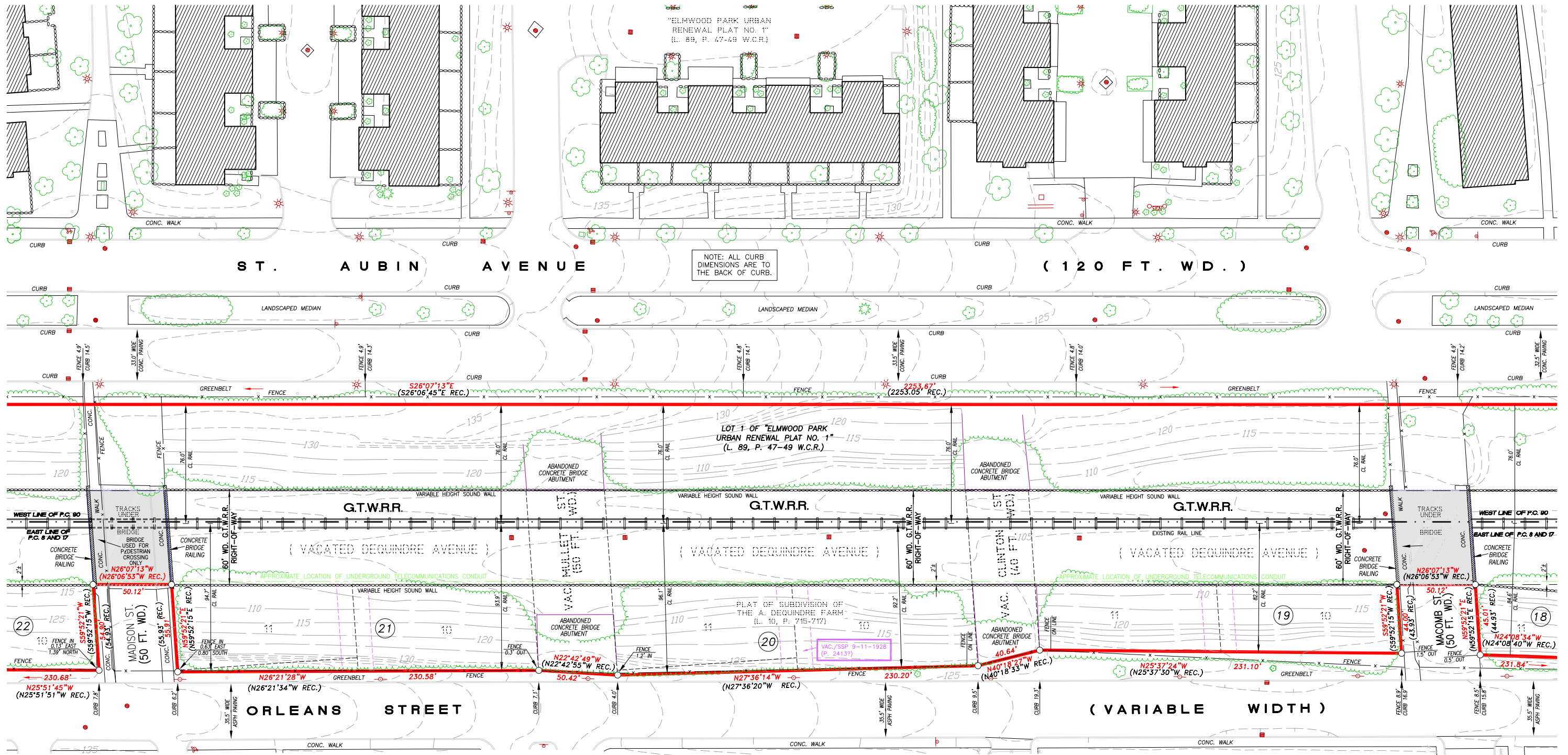
**METCO**  
SERVICES, INC.  
1273 LIBRARY, DETROIT, MI 48226  
TEL - (313) 961-4580 • FAX (313) 961-1698  
12504 STEPHENS, WARREN, MI 48089  
TEL - (588) 755-6770 • FAX (588) 755-5774  
www.metcoservices.com

DEQUINDRE CORRIDOR

ALTA/ACSM LAND TITLE SURVEY

CLIENT: ECONOMIC GROWTH CORPORATION

JOB NUMBER  
98-061  
SHEET NUMBER  
3 OF 7

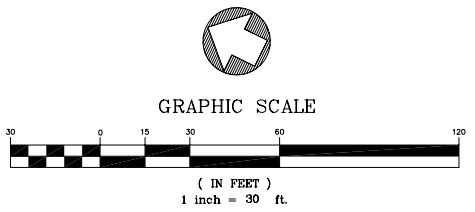


NOTE: ALL CURB DIMENSIONS ARE TO THE BACK OF CURB.

( 120 FT. WD. )

( VARIABLE WIDTH )

PARTS OF SECTIONS 19, 20, 21 L. 13390, P. 714, WAYNE COUNTY RECORDS E240898 SOLD BY CITY TO GTRR (4-3-57)  
 ALSO L. 13421, P. 529 WAYNE COUNTY RECORDS E261727 SOLD BY CITY TO GTRR (4-3-57)



DATE	REVISED	DATE	BY	DRAWN BY:
06/11/01				JRB
SCALE				CHECK BY:
1" = 30'				SRJ
				BOOK NO.:
				NA
				PAGE NO.:
				NA

**METCO**  
 SERVICES, INC.  
 1273 LIBRARY, DETROIT, MI 48226  
 TEL - (313) 961-4560 • FAX (313) 961-1696  
 12504 STEPHENS, WARREN, MI 48089  
 TEL - (588) 755-6770 • FAX (588) 755-5774  
 www.metcoservices.com

**DEQUINDRE CORRIDOR**

**ALTA/ACSM LAND TITLE SURVEY**

CLIENT: ECONOMIC GROWTH CORPORATION

JOB NUMBER  
**98-061**  
 SHEET NUMBER  
**4 OF 7**



DATE	REVISED	DATE	BY
06/11/01			
SCALE			
1" = 30'			

DRAWN BY:	JRB
CHECK BY:	SRJ
BOOK NO.:	NA
PAGE NO.:	NA

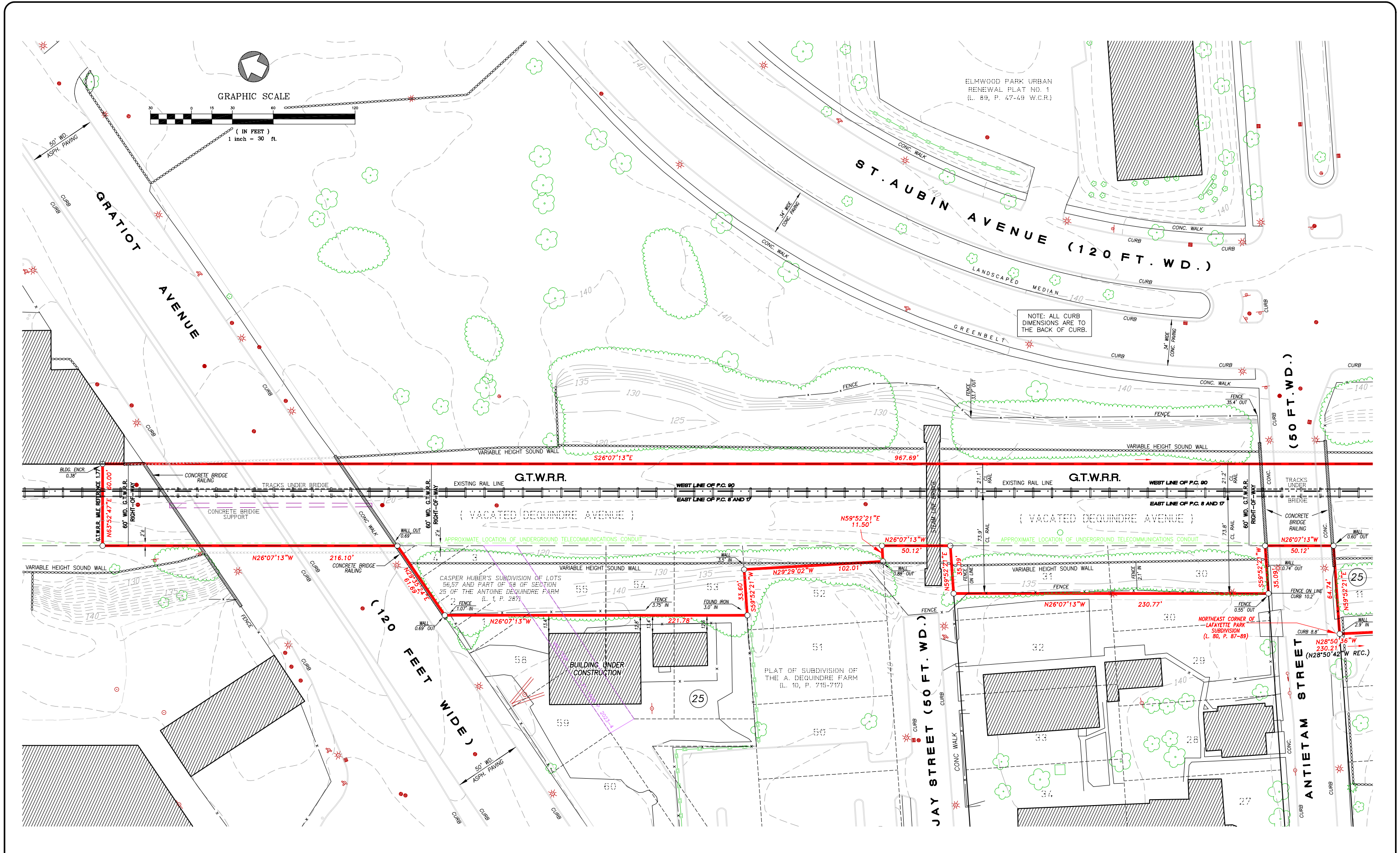
**METCO**  
SERVICES, INC.  
1273 LIBRARY, DETROIT, MI 48226  
TEL - (313) 961-4580 • FAX (313) 961-1698  
12504 STEPHENS, WARREN, MI 48089  
TEL - (588) 755-6770 • FAX (588) 755-5774  
www.metcoservices.com

**DEQUINDRE CORRIDOR**

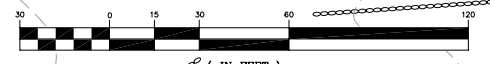
**ALTA/ACSM LAND TITLE SURVEY**

CLIENT: ECONOMIC GROWTH CORPORATION

JOB NUMBER	98-061
SHEET NUMBER	5 OF 7



GRAPHIC SCALE



ELMWOOD PARK URBAN RENEWAL PLAT NO. 1 (L. 89, P. 47-49 W.C.R.)

NOTE: ALL CURB DIMENSIONS ARE TO THE BACK OF CURB.

DATE	REVISED	DATE	BY	DRAWN BY:	<p>1273 LIBRARY, DETROIT, MI 48226 TEL - (313) 961-4580 • FAX (313) 961-1698 12504 STEPHENS, WARREN, MI 48089 TEL - (588) 755-5770 • FAX (588) 755-5774 www.metcoservices.com</p>	<p>DEQUINDRE CORRIDOR</p>	<p>ALTA/ACSM LAND TITLE SURVEY</p>	DATE	BY	JOB NUMBER
06/11/01				CHECK BY:				98-061		
SCALE				BOOK NO.:				SHEET NUMBER		
1" = 30'				PAGE NO.:				6 OF 7		
CLIENT: ECONOMIC GROWTH CORPORATION										

