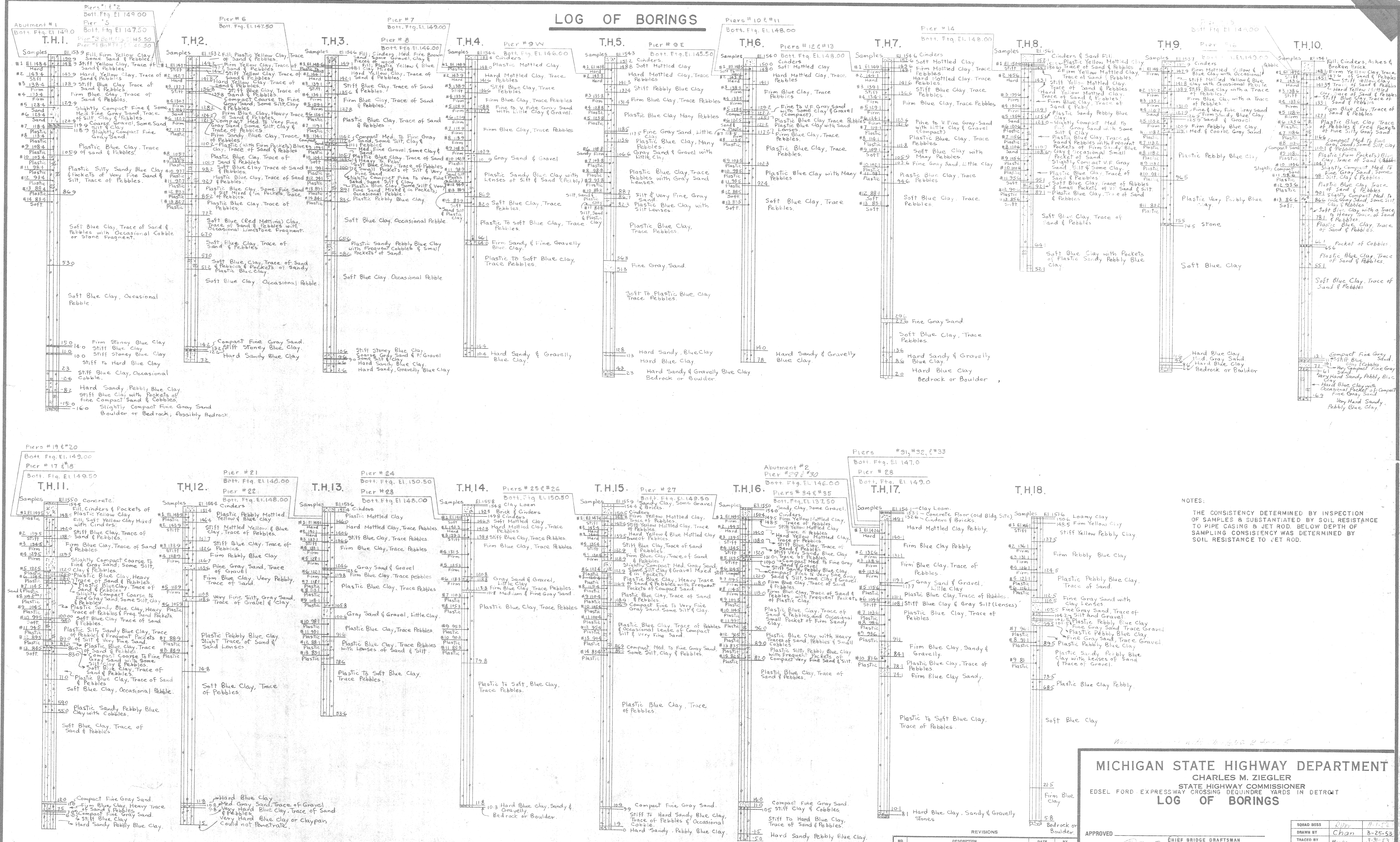


LOG OF BORINGS



NOTES: THE CONSISTENCY DETERMINED BY INSPECTION OF SAMPLES IS SUBSTANTIATED BY SOIL RESISTANCE TO PIPE CASING & JET ROD. BELOW DEPTH OF SAMPLING CONSISTENCY WAS DETERMINED BY SOIL RESISTANCE TO JET ROD.

MICHIGAN STATE HIGHWAY DEPARTMENT
CHARLES M. ZIEGLER
STATE HIGHWAY COMMISSIONER
EISEL FORD EXPRESSWAY CROSSING DEQUINNE YARDS IN DETROIT
LOG OF BORINGS
APPROVED [Signature] CHIEF BRIDGE DRAFTSMAN
APPROVED [Signature] ENGINEER OF BRIDGE DESIGN
APPROVED [Signature] BRIDGE ENGINEER
REVISIONS table with columns for NO., DESCRIPTION, DATE, BY.
SHEET 6 OF 182
XII OF 82-12-10