

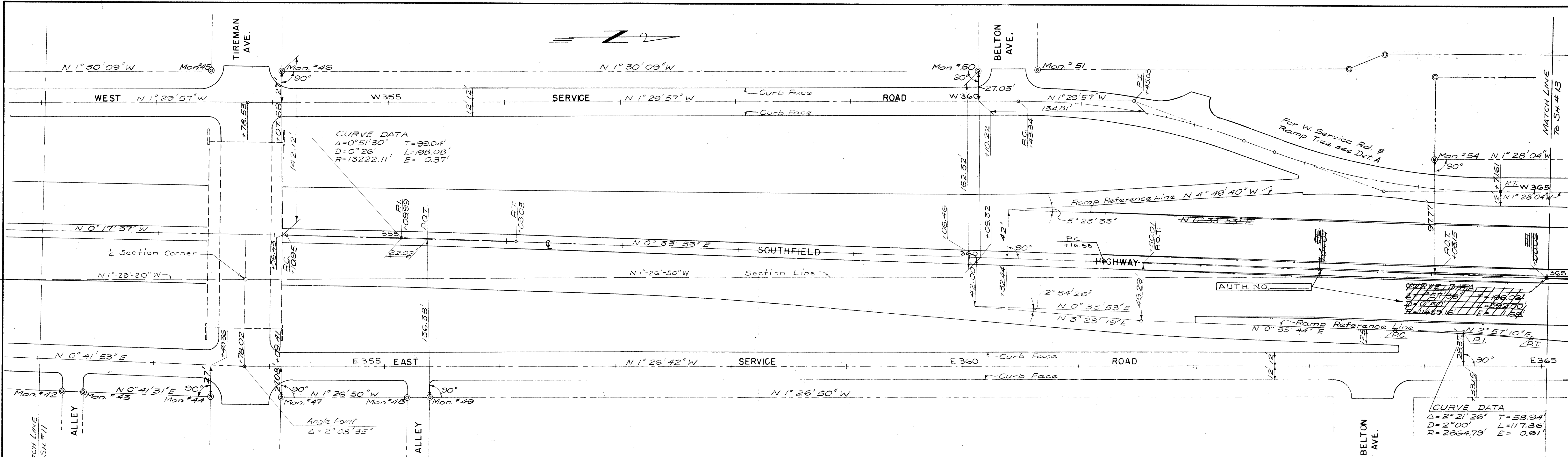
**DRAINAGE QUANTITIES**

Sta. W 292+70 to Sta. 300+561

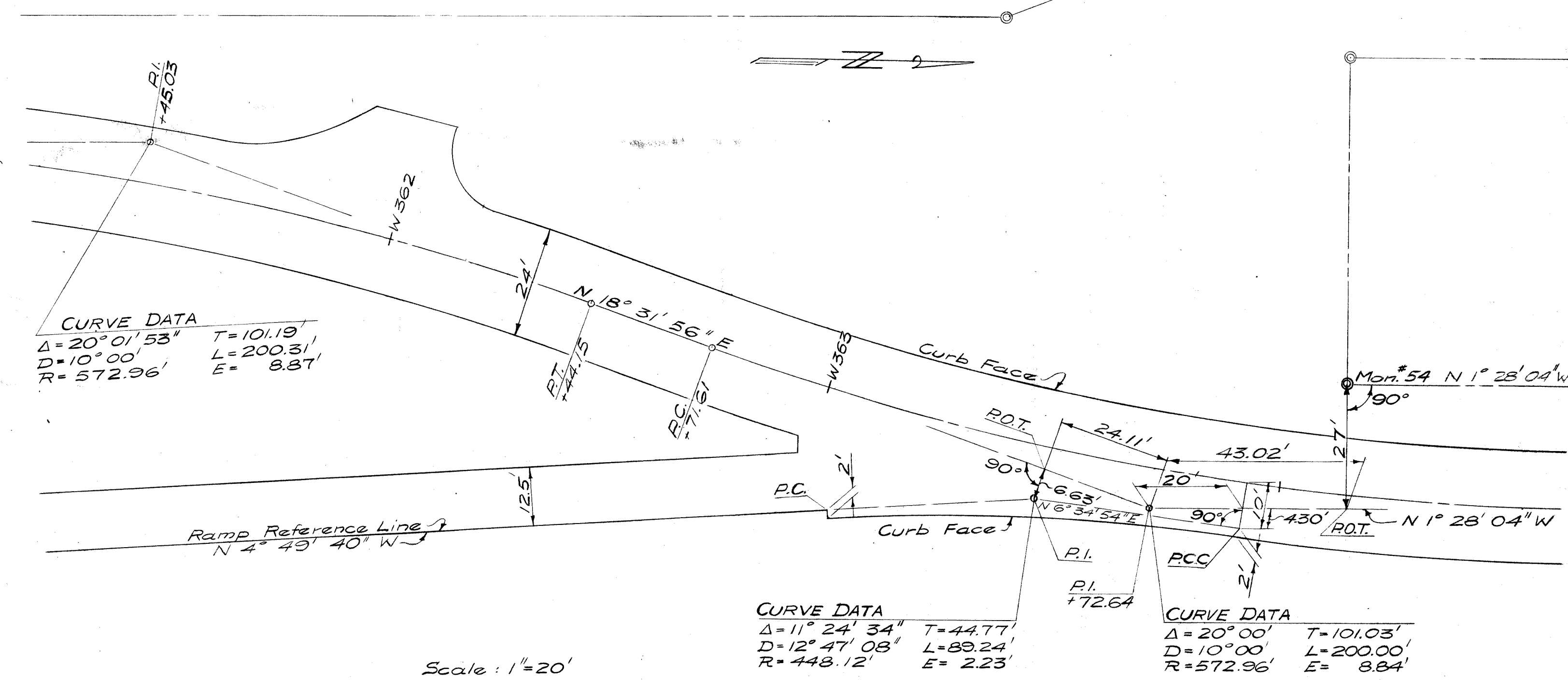
292 C.Y. Earth Excavation  
307 C.Y. Por. Mat'l. Grade "A"

**\*QUANTITIES (THIS SHEET)**

ITEM	QUANTITY
Earth Excavation	1150 C.Y.
Pavement Reinforcement	2495 S.Y.
Concrete Pavement, 9" with Integral Curbs	57 S.Y.
Concrete Base Course, 3" Uniform	183 S.Y.
Concrete Pavement, 3" Uniform	2315 S.Y.
Bituminous Concrete Leveling Course	10.1 Tons
Bituminous Concrete Wearing Course	10.1 Tons
Bituminous Bond Coat, AE-2	27 Gals.
Class "A" Seeding	0.5 - 0.8 Ac.
Mulching	1.0 - 0.6 Tons



PLAN  
Scale 1"=40'



DETAIL A

Auth. No. Rev'd Xway Align. & Ties 8-17-55 G.H.W. E.A.M.

REVISIONS	DRAWN BY J. Major	CHECKED BY Gibbons	DATE 1-27-59	APPROVED F. C. Shopshire ENGINEER OF BRIDGES AND STRUCTURES
	CORRECT			APPROVED W. J. Surr COUNTY HIGHWAY ENGINEER

WAYNE COUNTY ROAD COMMISSIONERS  
 BOARD OF  
 DETROIT, MICHIGAN  
 MICHAEL J. O'BRIEN  
 WILLIAM E. KREGG  
 CHARLES L. WILSON

STATE PROJECT	82192	COUNTY JOB	900-GI
ISSUE NO.		SHEET NO.	12
DATE	3-6-59		

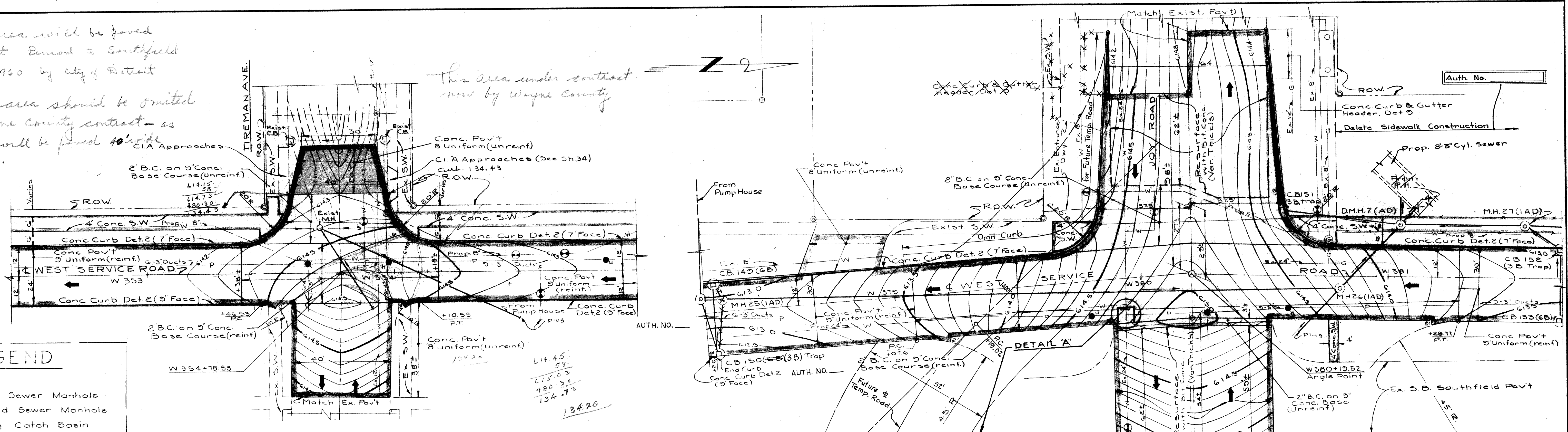
STATE FILE	BRIDGE	
	ROAD	W-68-1



shaded area will be paved  
in contract Period to Southfield  
Group I 1960 by city of Detroit

Shaded area should be omitted  
from Wayne County contract - as  
Tireman will be paved 10' wide  
by the city.

This area under contract  
now by Wayne County

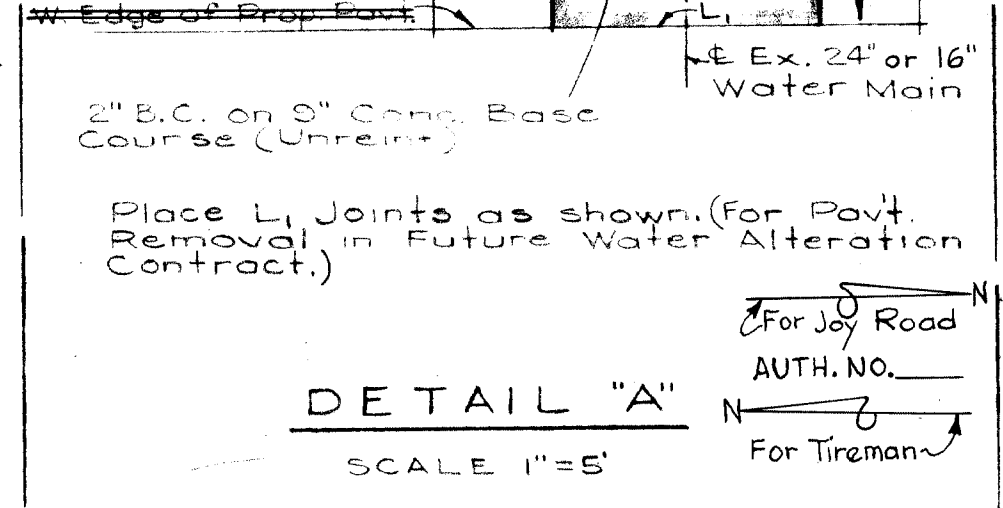


**LEGEND**

- Existing Sewer Manhole
- Proposed Sewer Manhole
- Existing Catch Basin
- Proposed Catch Basin
- ⊗ Water Gate Box
- ⊗ D.W.S. Gate & Well
- ⊗ Blow-Off & Well
- ⊗ 24" Gate Valve Well
- ⊗ R.L.C. Manhole
- ⊗ R.L.C. Handhole
- ⊗ M.C. Gas Co. Manhole
- ⊗ D.E. Co. Manhole
- ⊗ M.B.T. Co. Manhole

**PLAN**  
SCALE: 1" = 20'

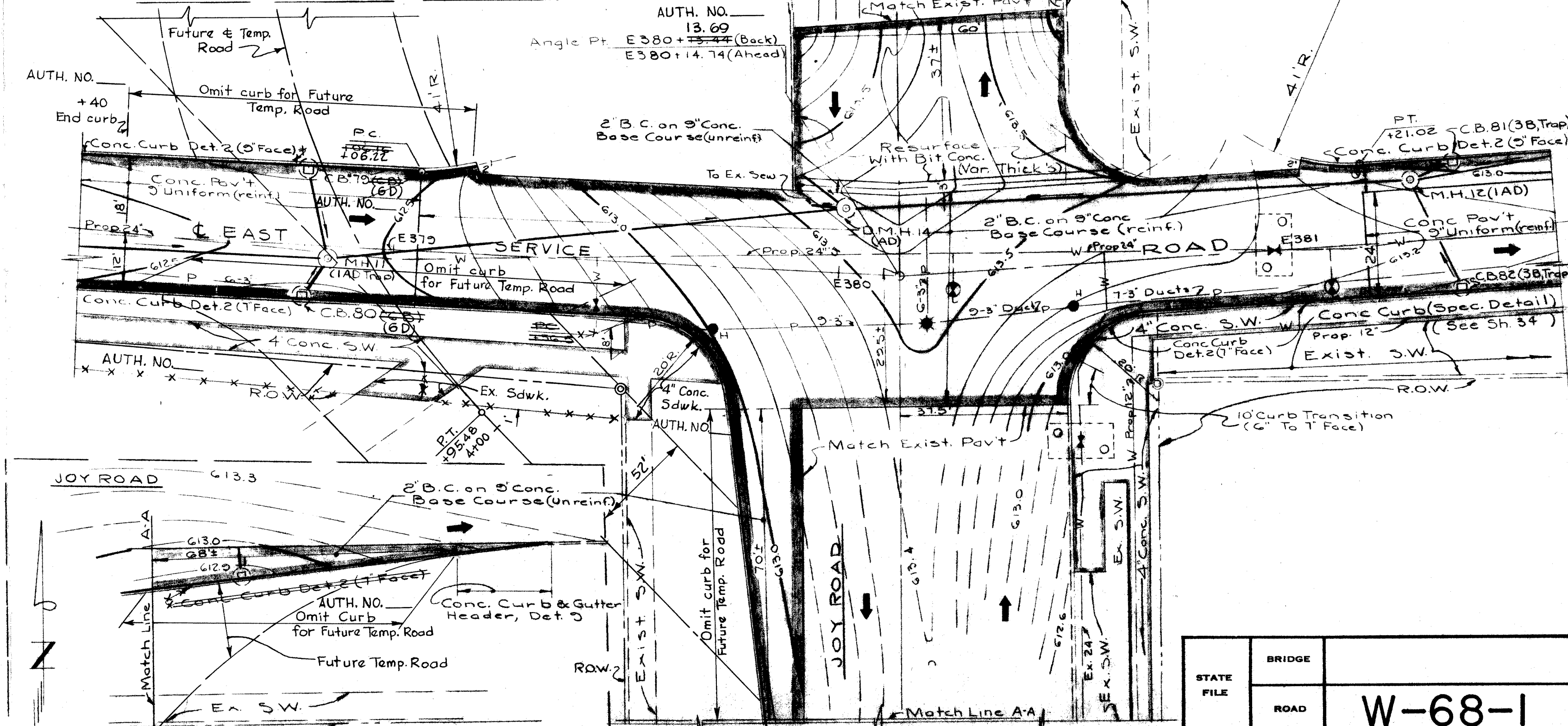
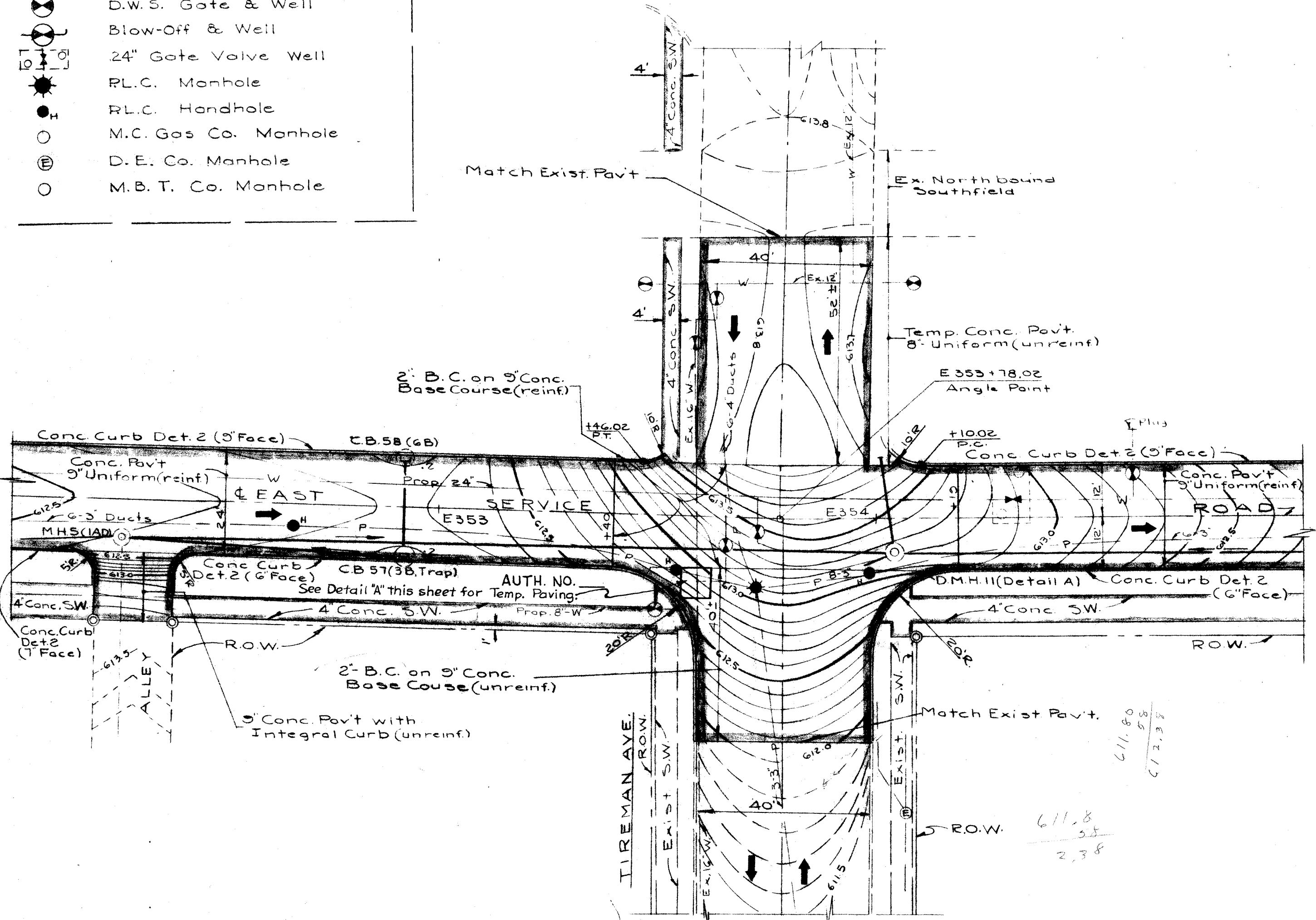
AUTH. NO. \_\_\_\_\_



**DETAIL "A"**  
SCALE 1" = 5'

AUTH. NO. \_\_\_\_\_

**Resurfacing Note**  
For thickness less than 5" use  
1" B.C. on B.C.C. For thickness  
greater than 5" use 1" B.C.W.C. &  
1" B.C.C. on Bit Binder Course.



Auth. No. \_\_\_\_\_ Revised Walk along West Sen. Rd. North of Joy. A.W.L. 9-10-59 v D.L.K.  
AUTH. NO. \_\_\_\_\_ Temp. Pavt. @ Tireman, 6-23-59 A.A.M. ✓ J.J.O.

REVISIONS	DRAWN BY	CHECKED BY	DATE	APPROVED
	G.W. Helmi	D. Kramer	2-2-59	<i>F. K. Shapiro</i> ENGINEER OF BRIDGES AND STRUCTURES
				<i>A.W. Johnson</i> ENGINEER OF DESIGN, STRUCTURES AND EXPRESSWAYS

**WAYNE COUNTY ROAD COMMISSIONERS**  
DETROIT, MICHIGAN

MICHAEL J. O'BRIEN  
WILLIAM E. KREGER  
CHARLES L. WILSON

**SOUTHFIELD HIGHWAY**  
SERVICE ROAD INTERSECTIONS AT TIREMAN & JOY  
PAVING - DETAILS  
KIRKWOOD AVE. TO JOY ROAD

STATE PROJECT	COUNTY JOB
82192	900-G1
ISSUE NO.	SHEET NO.
DATE 3-6-59	59