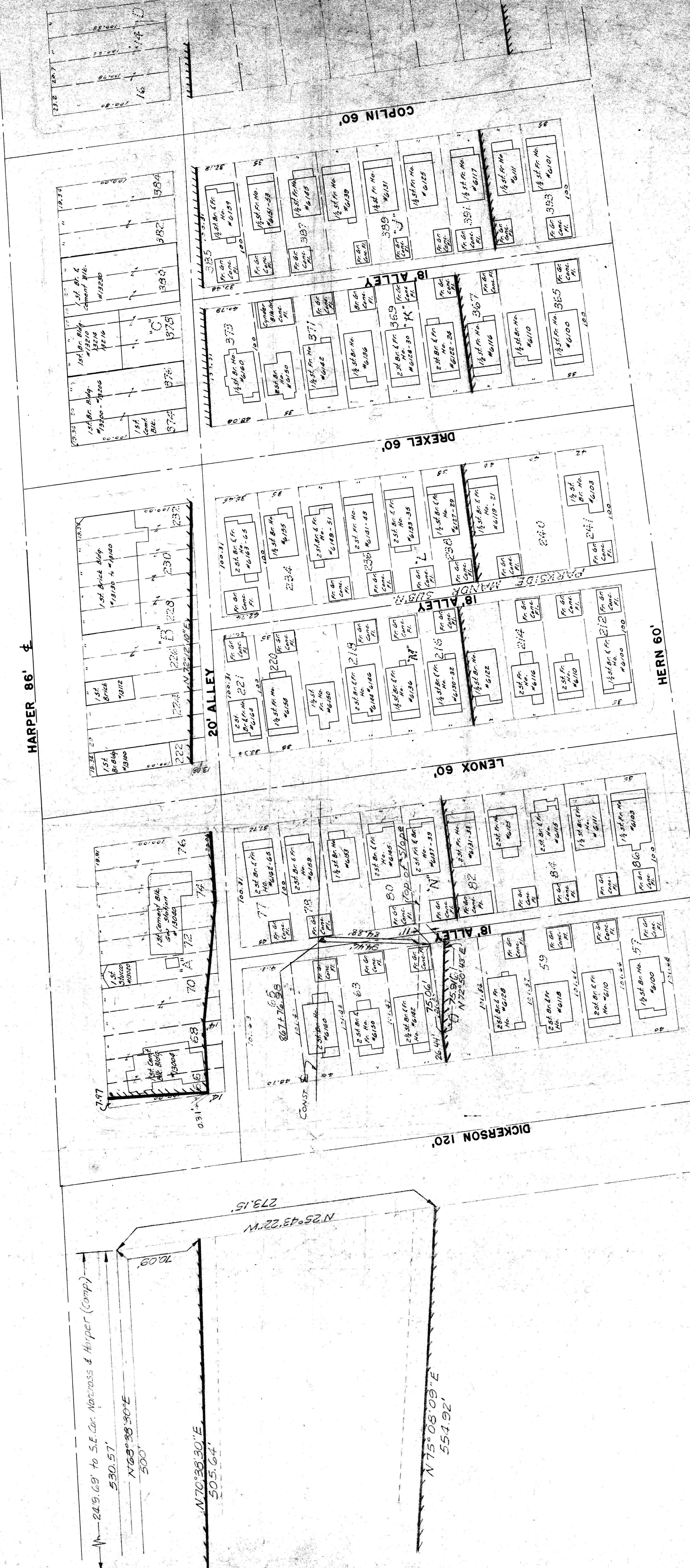
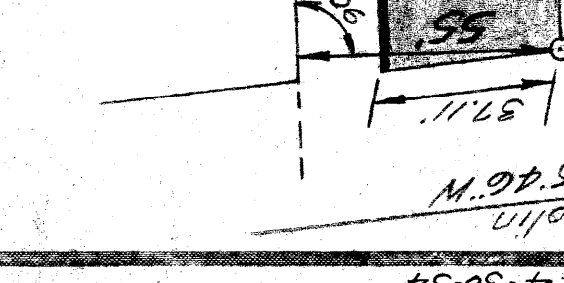
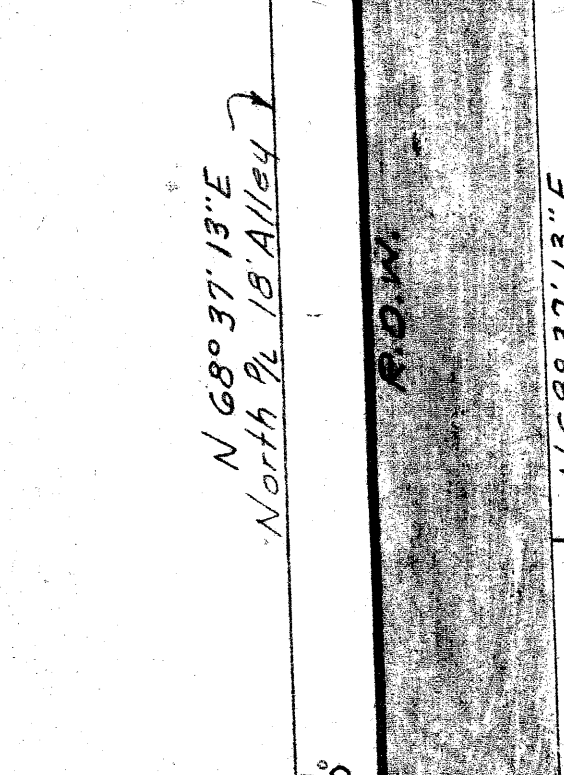
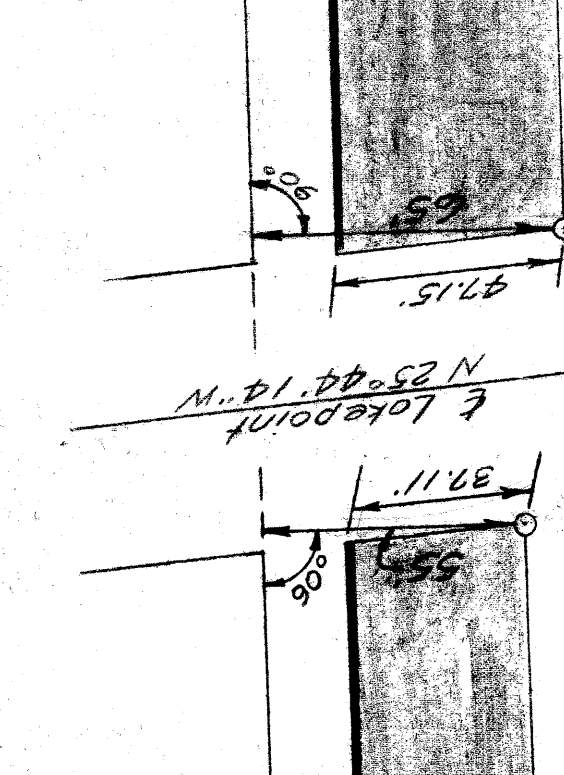
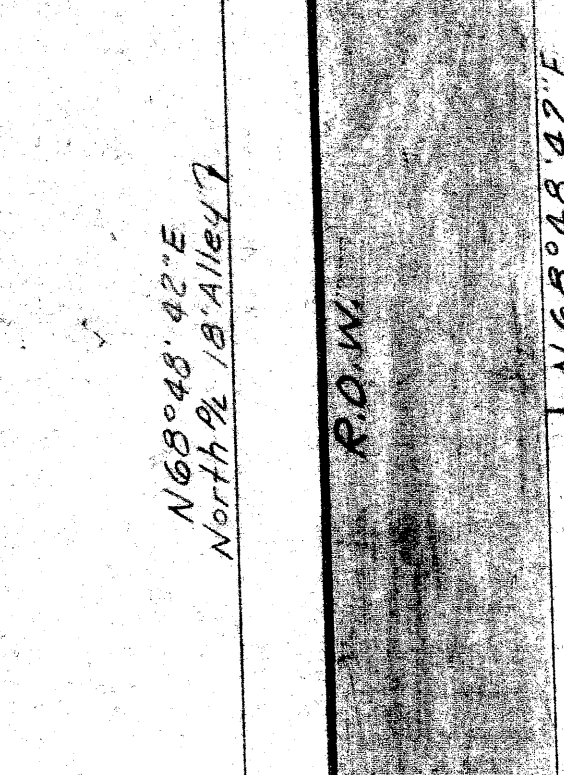
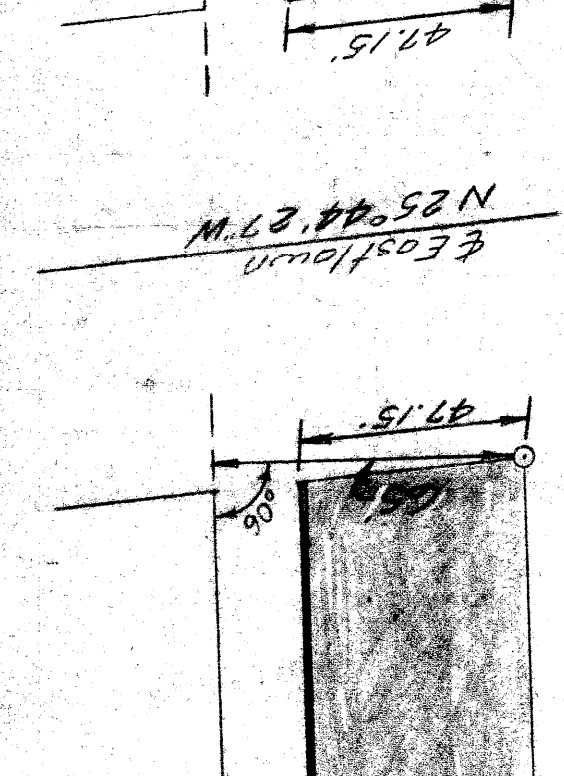
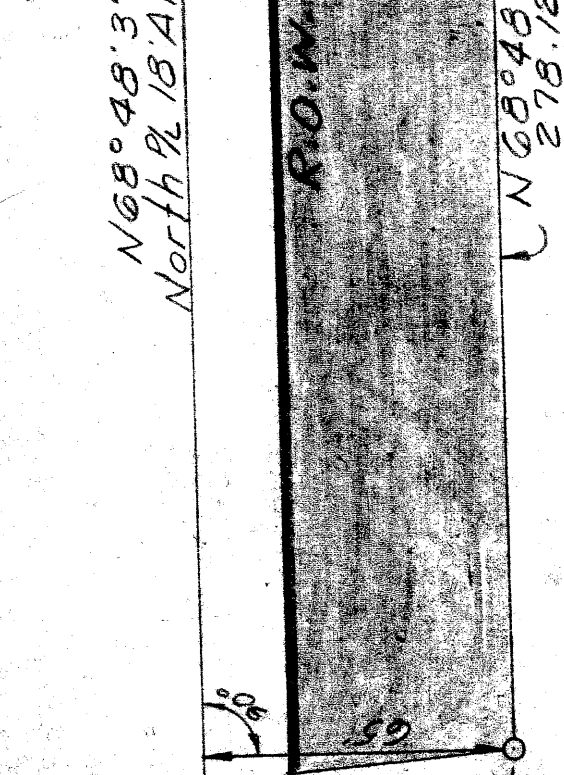
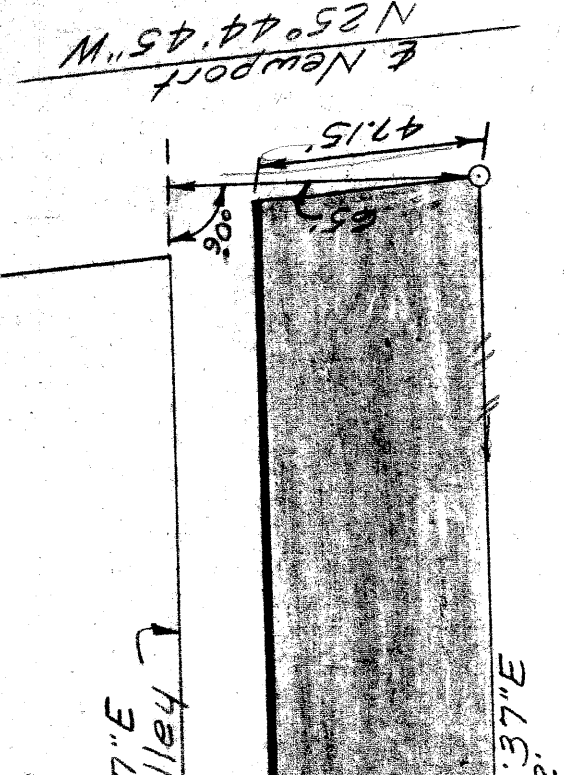
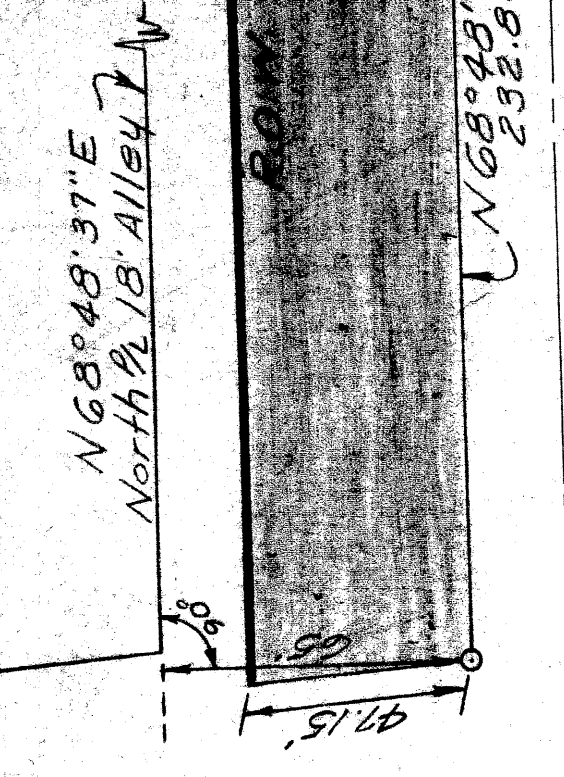


STATE	MICH.	PROJ. NO.	4	SHEET NO.	13-A-1
COUNTY	Wayne	YEAR	1954	SHEET TOTAL	13-A-1
ROUTE	12	DATE	6-29-55	REVISED	6-29-55
DIV. NO.	4	PROJ. NO.	4	SHEET NO.	13-A-1
ROUTE	12	DATE	6-29-55	SHEET TOTAL	13-A-1



Revised
6-29-55
Rev. J
1-20-54
ROW
863-875

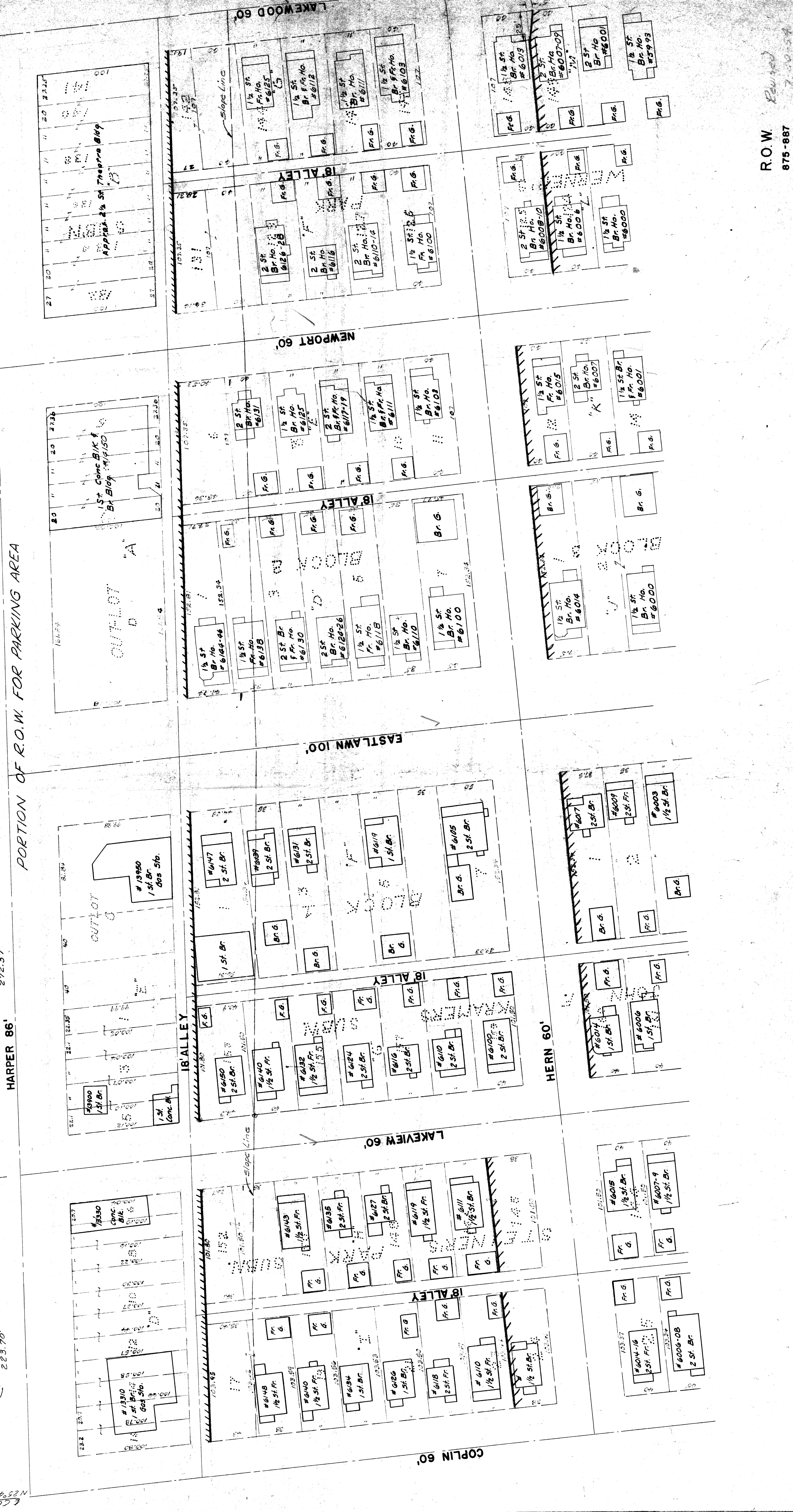
STATE	MICH.	COUNTY	WALWORTH	CITY	WALWORTH
ROUTE	111E	BE-G91	WALWORTH	DEPT	111E
SHEET	10774	PLAT	111E	PLAT	111E



PORTION OF R.O.W. FOR PARKING AREA

HARPER 86'

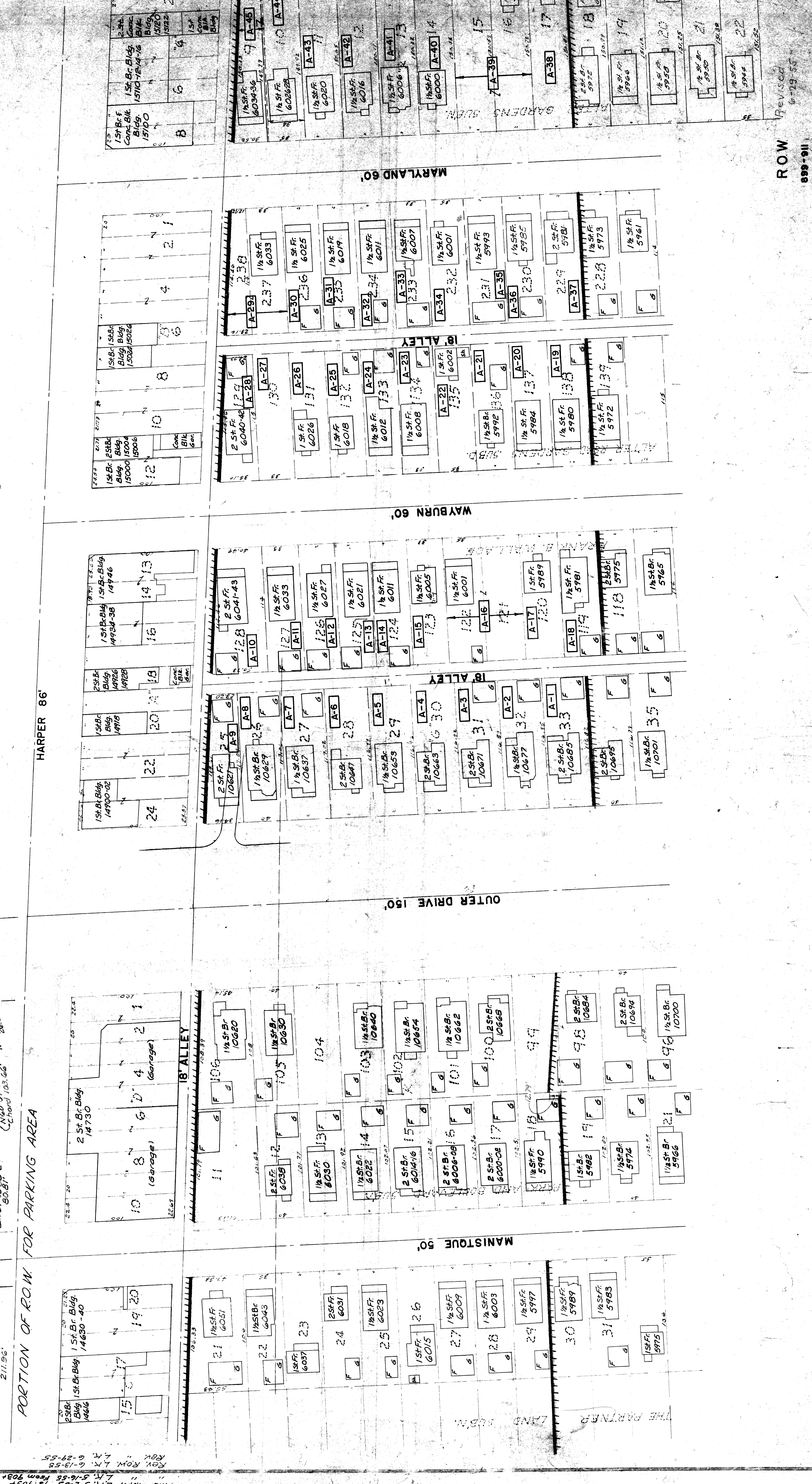
REV. 3-7-55 L.K.
Final R.O.W. CH. 7-20-54 TO 51876417
Rev. Final R.O.W. CH. 4-30-54



R.O.W. Revised

875-887

DIV. NO.	STATE	PROJECT	SHEET NO.
4	MICH.	City	17-12
ROUTE	COUNTY	PROJECT	DATE
4	Wayne	City	12-20-55
PROJECT	COUNTY	PROJECT	DATE
4	Wayne	City	12-20-55



ROW
 899-911
 Revised
 6-29-55

T-13-A-1
 82-70