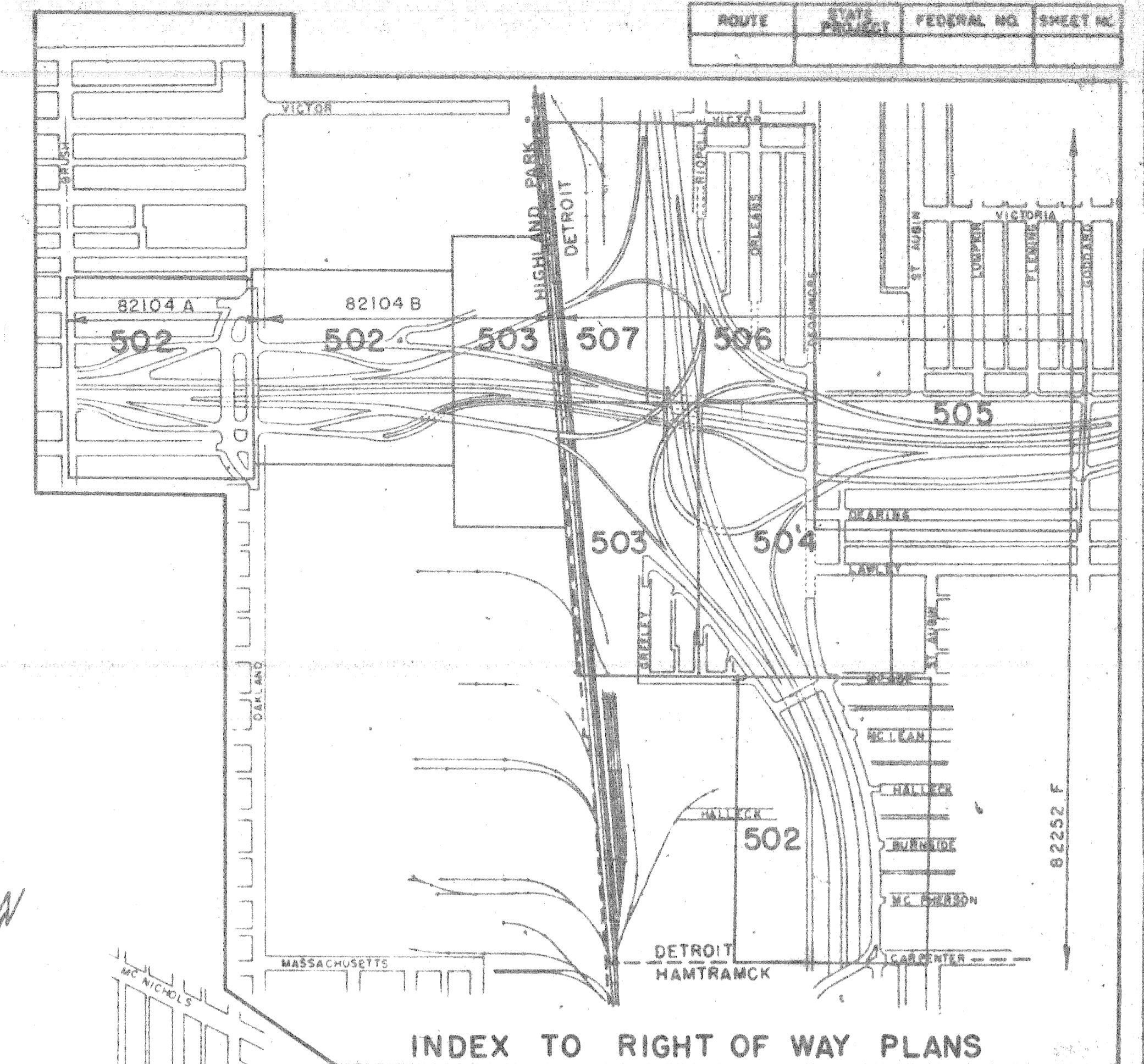
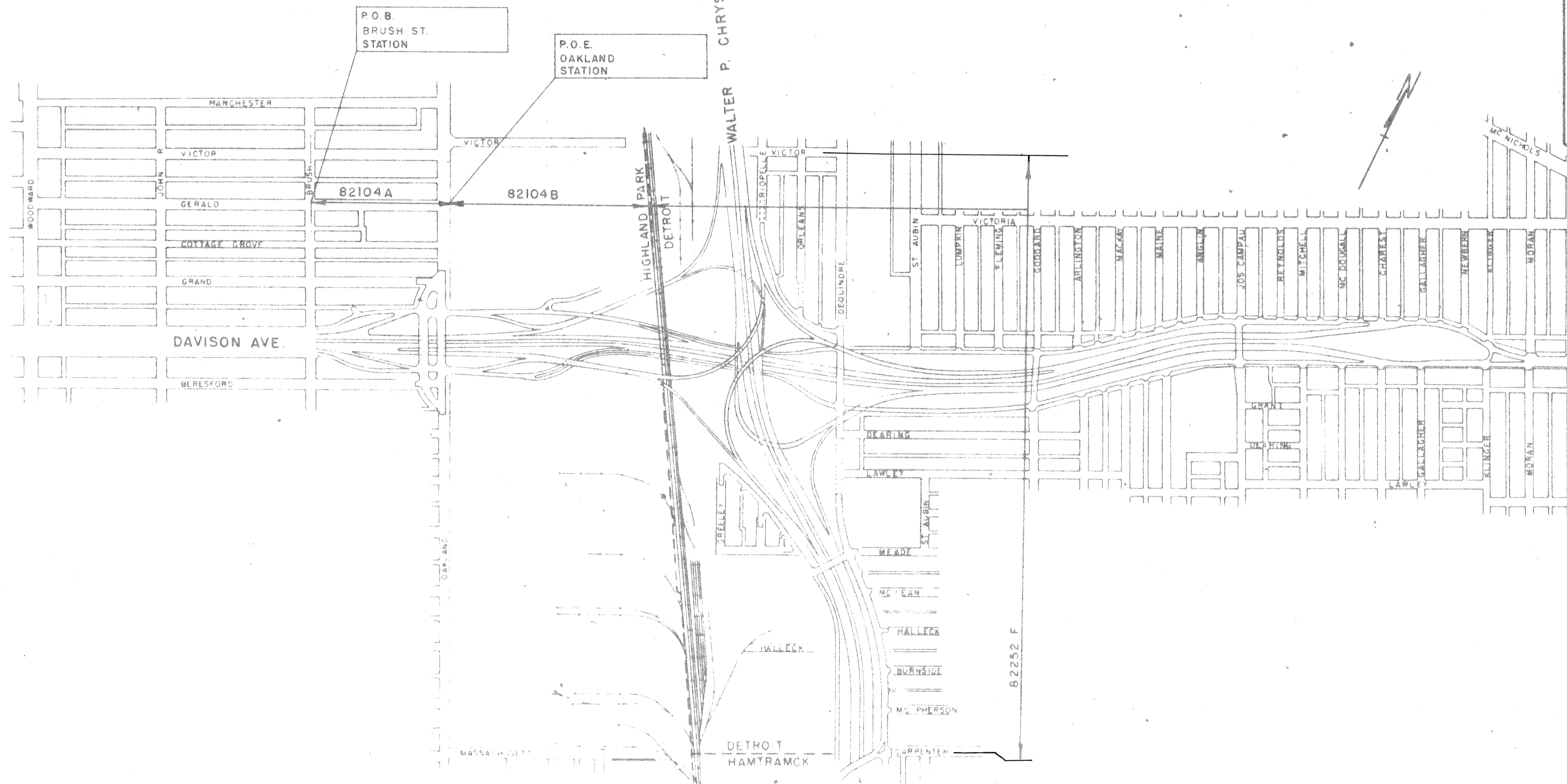


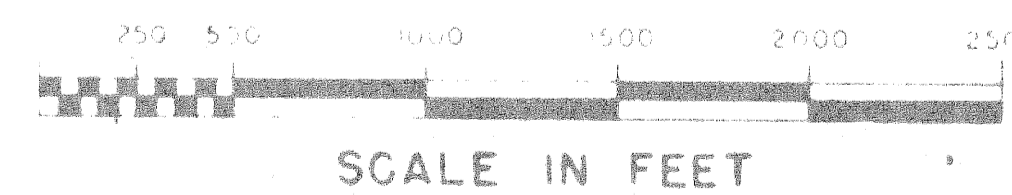
MICHIGAN
STATE HIGHWAY DEPARTMENT

PLANS OF PROPOSED
MICHIGAN PROJECT I-75-
CONTROL SECTION 82104
THE WALTER P. CHRYSLER EXPRESSWAY

WAYNE COUNTY
CITY OF HIGHLAND PARK



- INDEX OF SHEETS
- SHEET 501 TITLE SHEET
 - SHEET 502 RIGHT OF WAY
 - SHEET 503 DETAILS



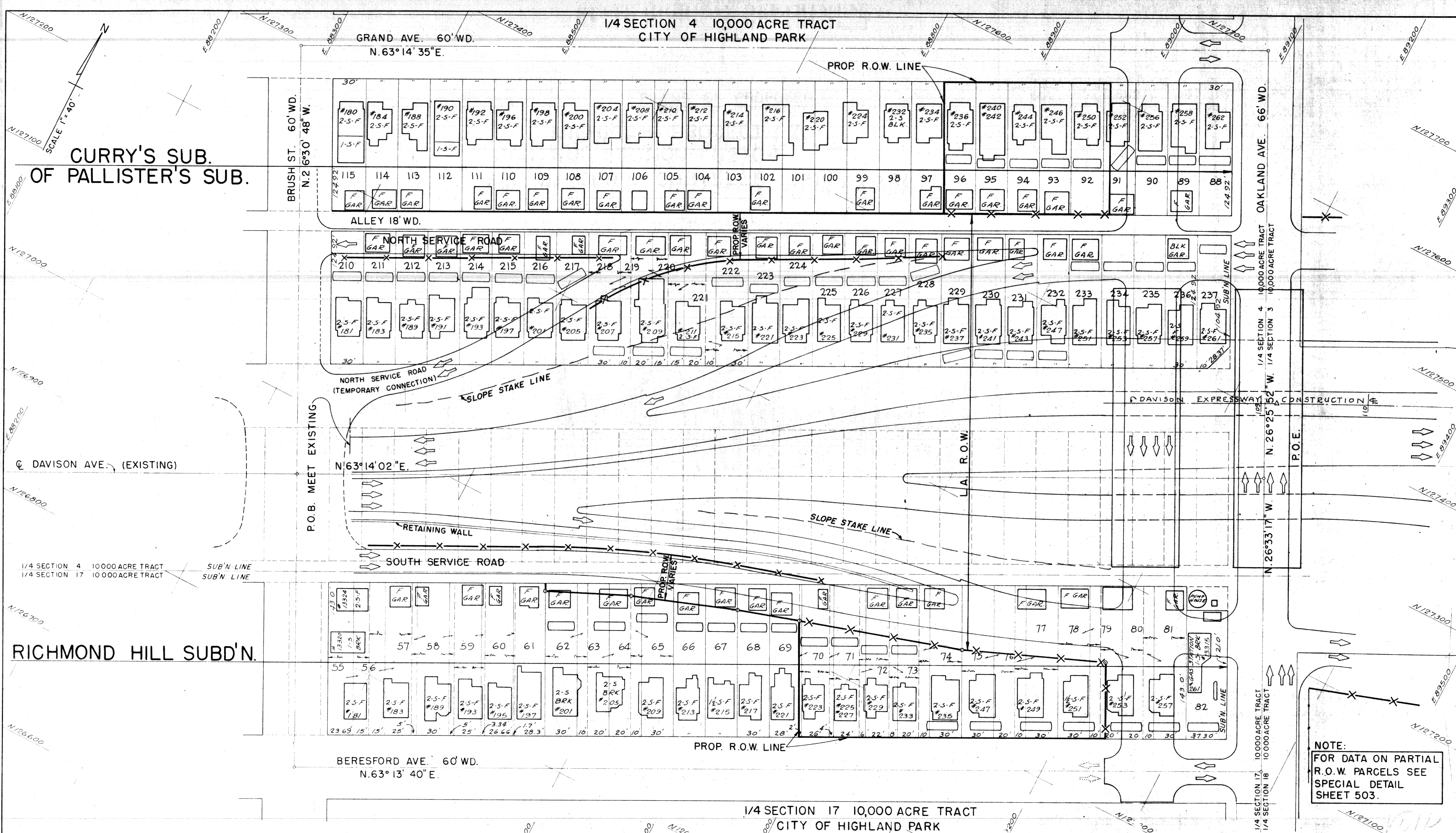
AUTH.	DATE	REVISION
C.S.R.	4-15-51	FINAL R.O.W.

APPROVED *S. J. [Signature]* 1-29-65
COUNTY HIGHWAY ENGINEER DATE

ITEM	
CONTRACT FOR _____	
DIVISION APPROVAL	
CHECKED _____	ENGINEER OF DESIGN _____ DATE _____
RECOMMENDED FOR APPROVAL _____	ENGINEER OF BRIDGE AND ROAD DESIGN _____ DATE _____
RECOMMENDED FOR APPROVAL _____	TRAFFIC ENGINEER _____ DATE _____
OFFICES OF DESIGN AND CONSTRUCTION	
APPROVED _____	CONSTRUCTION ENGINEER _____ DATE _____
APPROVED _____	CHIEF DESIGN ENGINEER _____ DATE _____
STATE HIGHWAY DEPARTMENT APPROVAL	
APPROVED _____	
BY _____	DIRECTOR OF ENGINEERING - CHIEF ENGINEER _____ DATE _____
PLANS PREPARED BY	DEPARTMENT OF COMMERCE BUREAU OF PUBLIC ROADS
WAYNE COUNTY ROAD COMMISSION	APPROVED _____ DIVISION ENGINEER _____ DATE _____

CONTRACT NO.	COUNTY JOB NO.
R82104A	501

PROJECT NO.



CURRY'S SUB.
OF PALLISTER'S SUB.

RICHMOND HILL SUBD'N.

NOTE:
FOR DATA ON PARTIAL
R.O.W. PARCELS SEE
SPECIAL DETAIL
SHEET 503.

CSR	8/15/57	ROW LINES REVISED
Auth	Date	Revision
CSR	4/15/59	Final R.O.W.

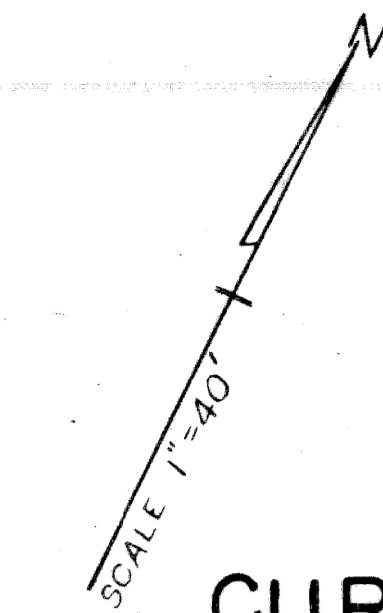
SQUAD LEADER *E. A. Verue* DATE 1-65
DRAWN BY *J.M. WF* 1-65
CHECKED BY *C.P.E.*
CORRECT
Johnston
ENGR. MEER OF RIGHT OF WAYS

PLANS PREPARED BY THE BOARD OF
WAYNE COUNTY ROAD COMMISSIONERS
PHILIP J. NEUDECK
WILLIAM E. KREGG
AL BARBOUR

MICHIGAN STATE HIGHWAY DEPARTMENT
WALTER P. CHRYSLER EXPRESSWAY (I-75)
CHRYSLER-DAVISON INTERCHANGE
RIGHT OF WAY

ISSUE NO.	DATE
465	1-29-65
COUNTY JOB NO.	SHEET NO.
1000	
STATE PROJECT	
82998 A	

FILE NO. N 350
STENCIL **R82104-A**
STATE PROJECT 82998 A FEDERAL PROJECT SHEET NO. 502



CURRY'S SUB.
OF PALLISTER'S SUB.

GRAND AVE. 60 WD.
N. 63° 14' 35" E

BRUSH ST. 60' WD.
N. 26° 30' 48" W.

OAKLAND AVE. 66' WD.

ALLEY 18' WD. N. 63° 14' 31" E.

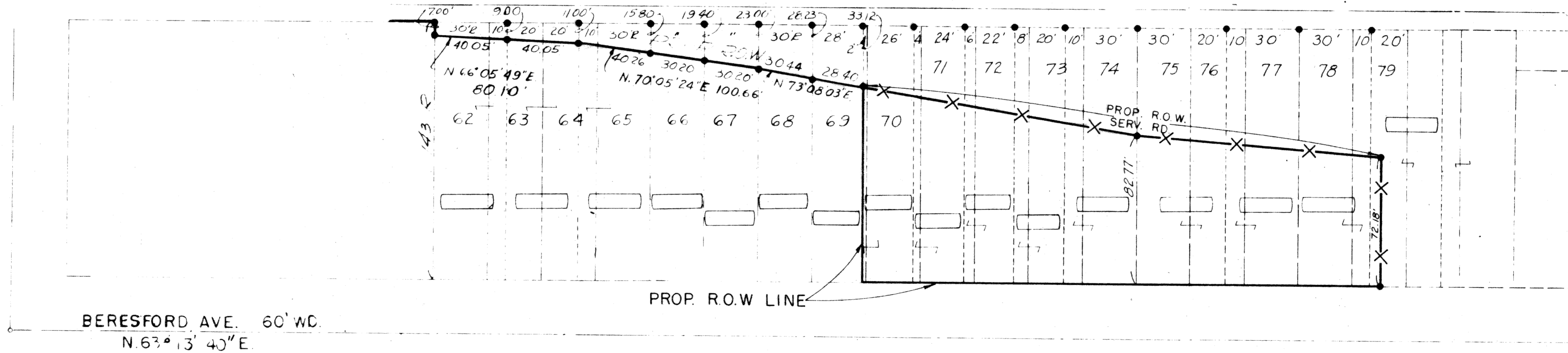
DAVISON AVE. (Existing)

N. 63° 14' 02" E.

N. 26° 25' 52" W.

N. 26° 33' 17" W.

RICHMOND HILL SUBD'N.



BERESFORD AVE. 60' WD.
N. 63° 13' 40" E.

PROP. R.O.W. LINE

REVISIONS

G.S.R. 1/25/54 ROW LINES REVISED.
Auth Date Revision
G.S.R. 1/5/55 Final ROW

SQUAD LEADER E. J. Verwe DATE 1-65
DRAWN BY IEC 1-65
CHECKED BY CBE 1-65
CORRECT
A. W. Johnson
ENGINEER OF RIGHT OF WAYS

PLANS PREPARED BY THE BOARD OF
WAYNE COUNTY ROAD COMMISSIONERS
PHILIP J. NEUDECK WILLIAM E. KREGER AL BARBOUR
APPROVED A. W. Johnson
ENGINEER OF HIGHWAYS AND EXPRESSWAYS

MICHIGAN STATE HIGHWAY DEPARTMENT

WALTER P. CHRYSLER EXPRESSWAY (I-75)
CHRYSLER-DAVISON INTERCHANGE
RIGHT OF WAY

ISSUE NO. DATE
AUG 4-65 1-29-65
COUNTY JOB SHEET NO.
1000 503
STATE PROJECT
82104 A

R82104-A