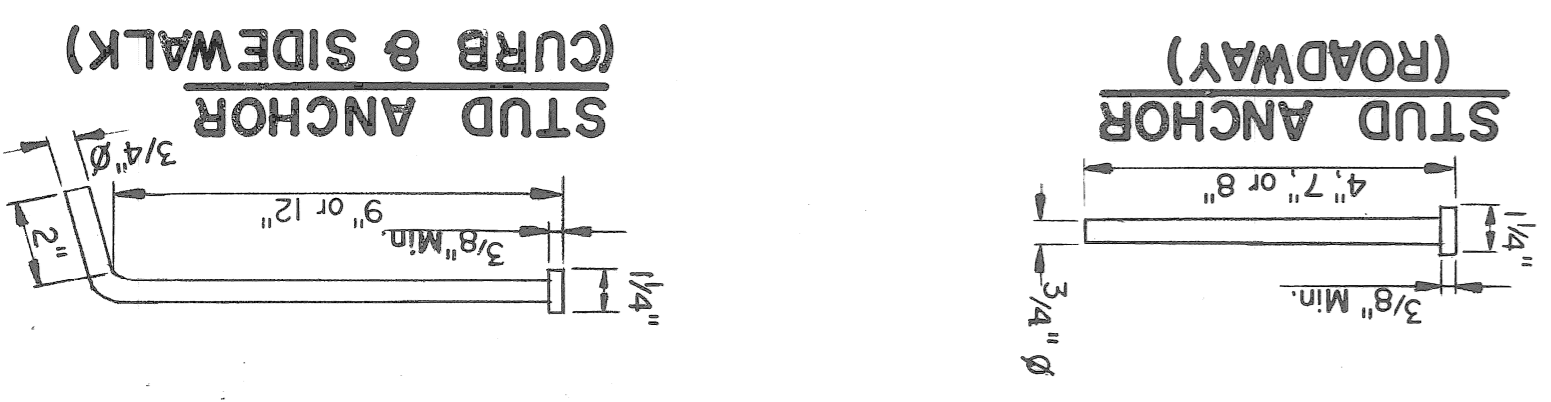


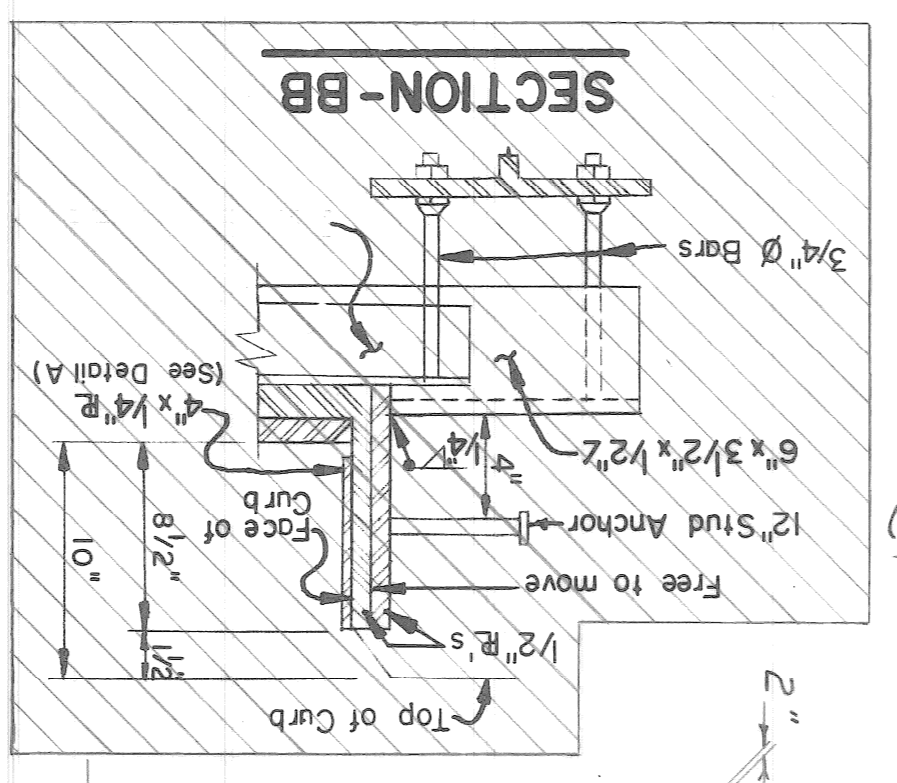
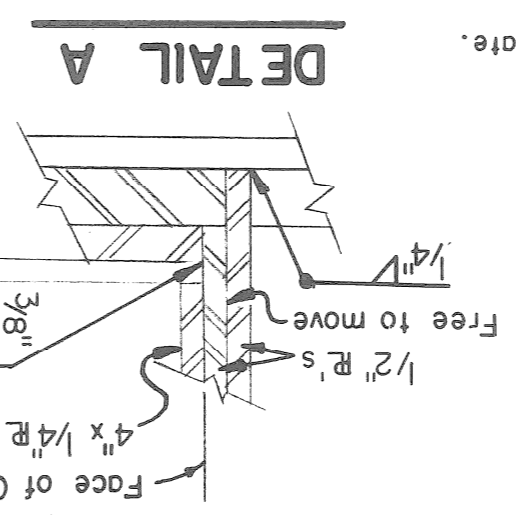
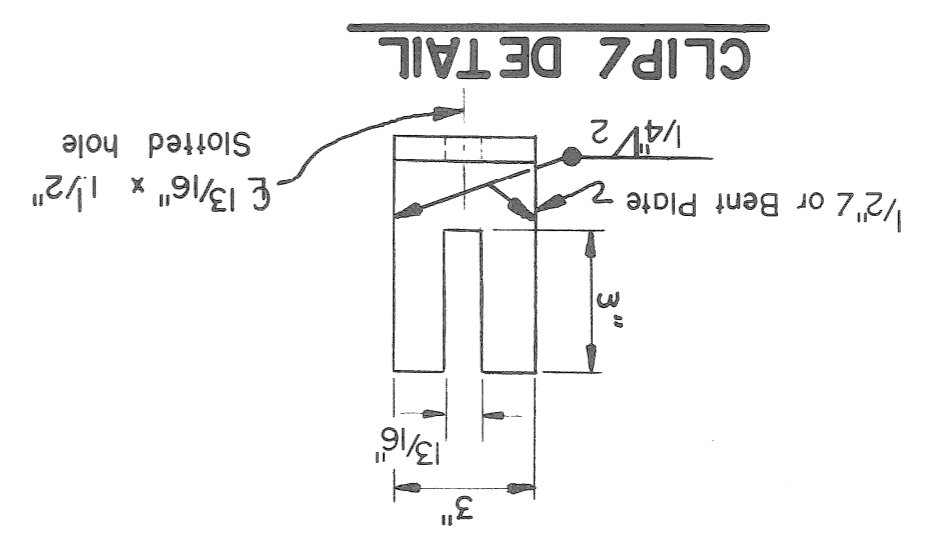
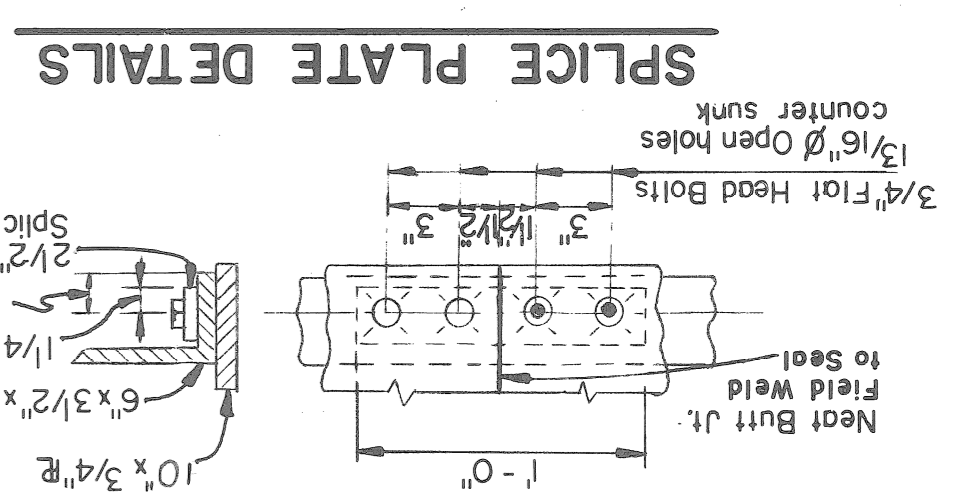
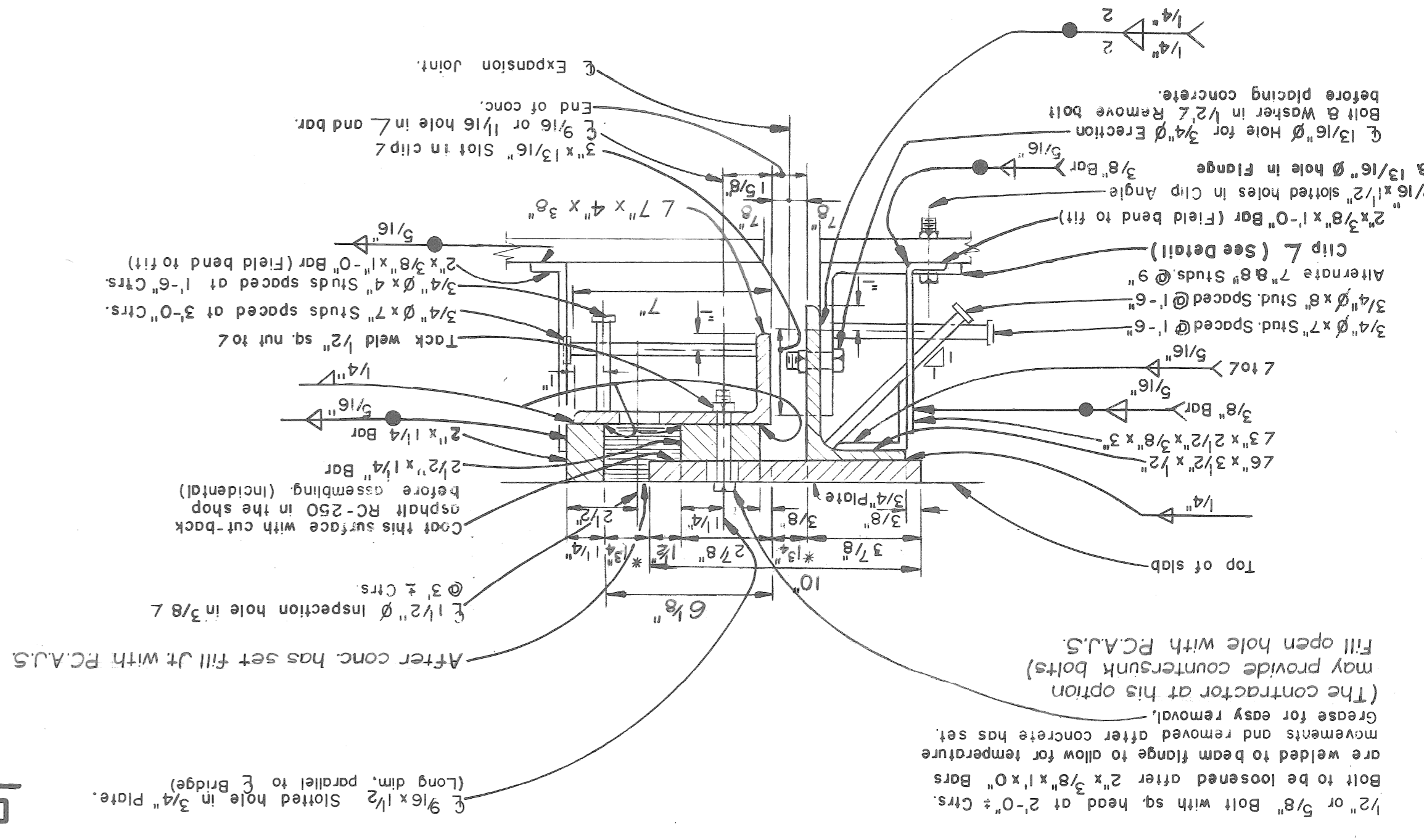
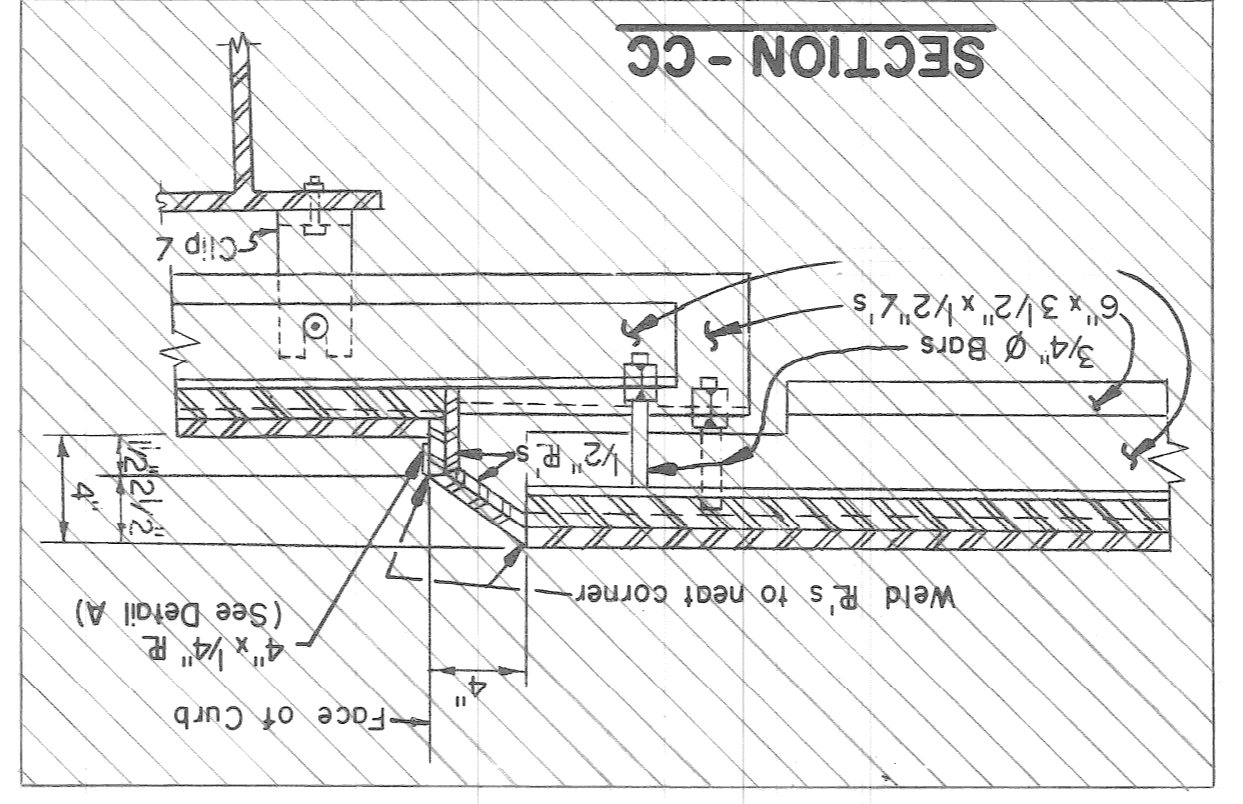
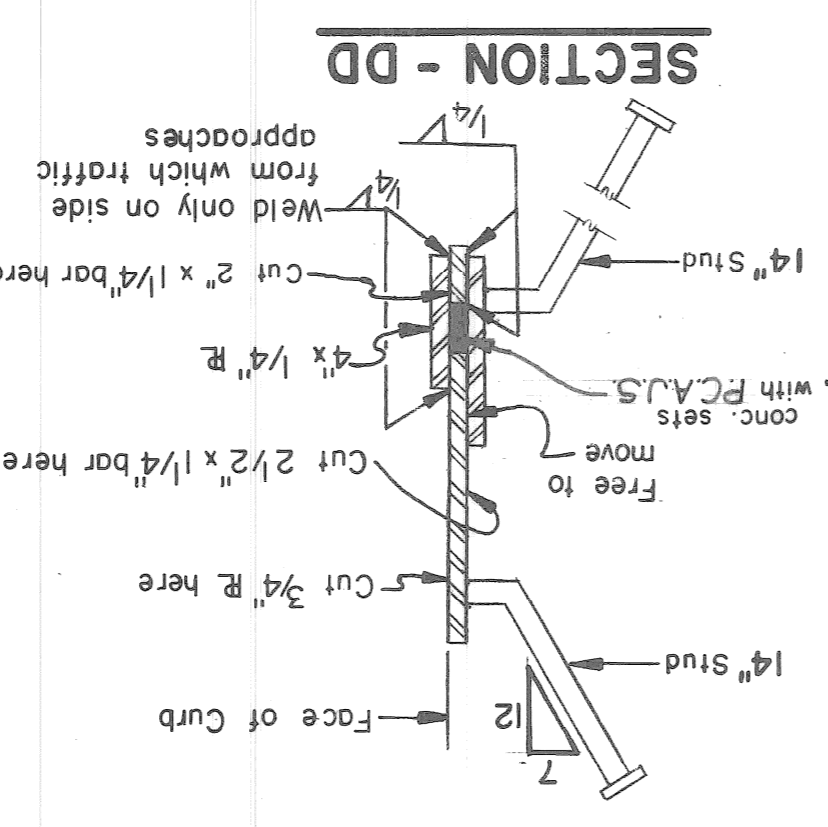
**MICHIGAN DEPARTMENT OF STATE HIGHWAYS**  
**MEYERS ROAD OVER JEFFRIES FREEWAY**  
**IN DETROIT**  
**METAL EXPANSION JOINT-SPAN I**

PW 990(21)  
 CIVIL ENGINEER  
 CITY OF DETROIT

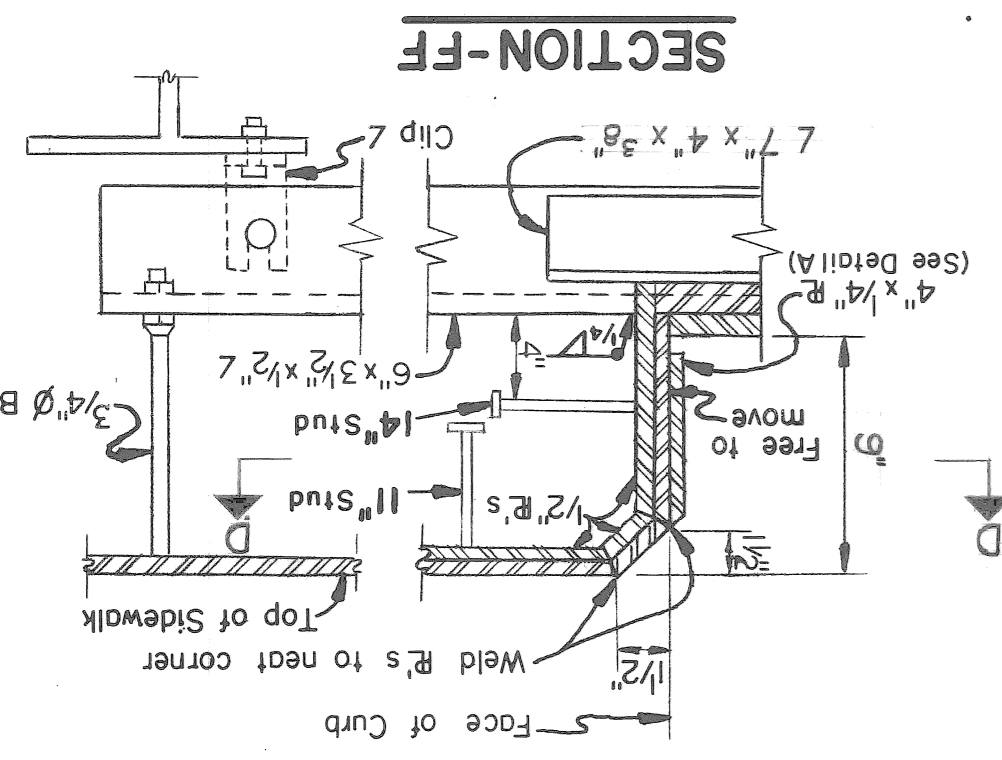
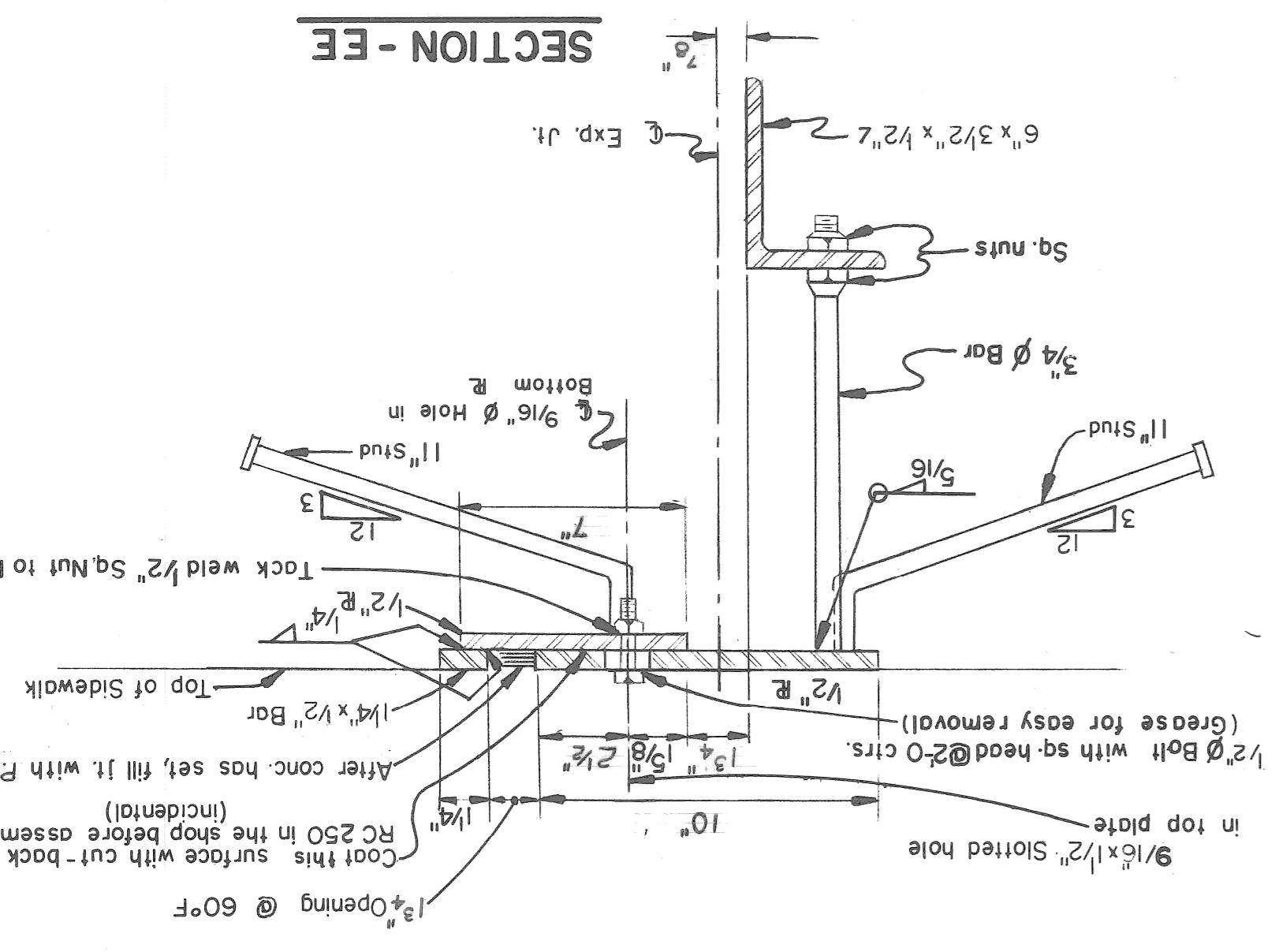
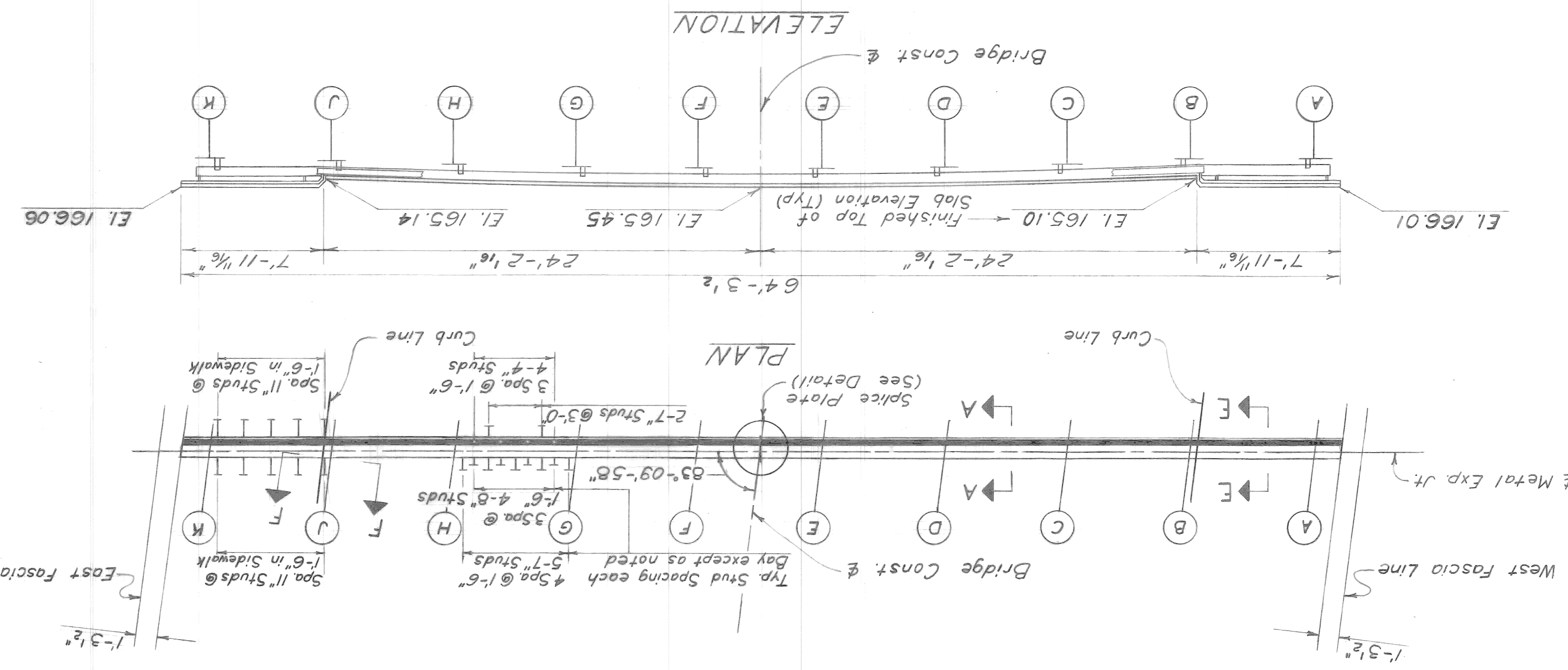
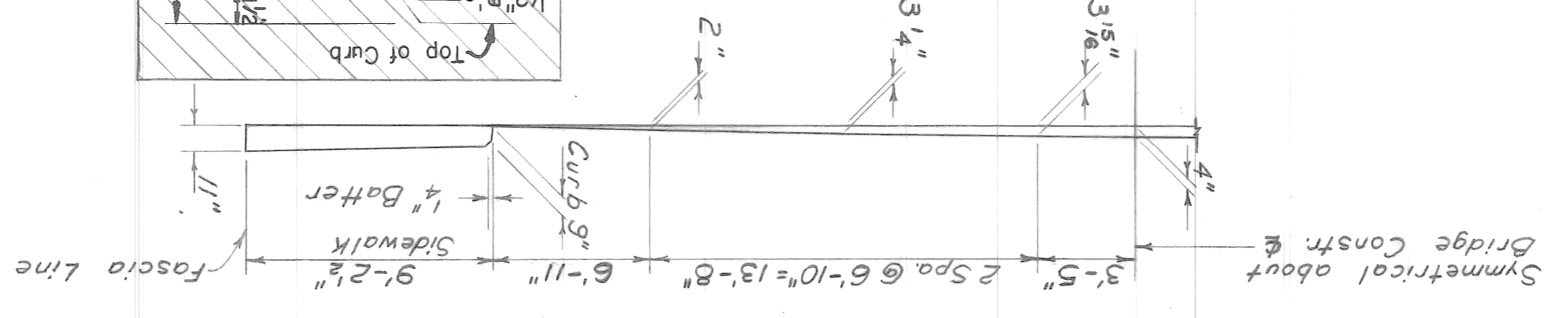
\* 60° F



**NOTES:**  
 The Metal Expansion Joint shall be bent in the shop to conform with the contour of the top of roadway slab.  
 Weight of Metal Expansion Joint: 4600 lbs.  
 Weight of Metal Expansion Joint is included in Structural Steel weight on sheet.  
 PCAS denotes Two-component Polyurethane Cold-Applied Joint Sealer.  
 PCAS is included in Superstructure Quantities.



**CROWN TEMPLATE**  
 (Normal to Bridge Constr. &)



**MICHIGAN DEPARTMENT OF STATE HIGHWAYS**  
**MEYERS ROAD OVER JEFFRIES FREEWAY**  
**IN DETROIT**  
**METAL EXPANSION JOINT-SPAN 4**

NO.	DESCRIPTION	DATE	BY

REVISIONS

CHECKED BY	DATE

SHEET 17 OF 25

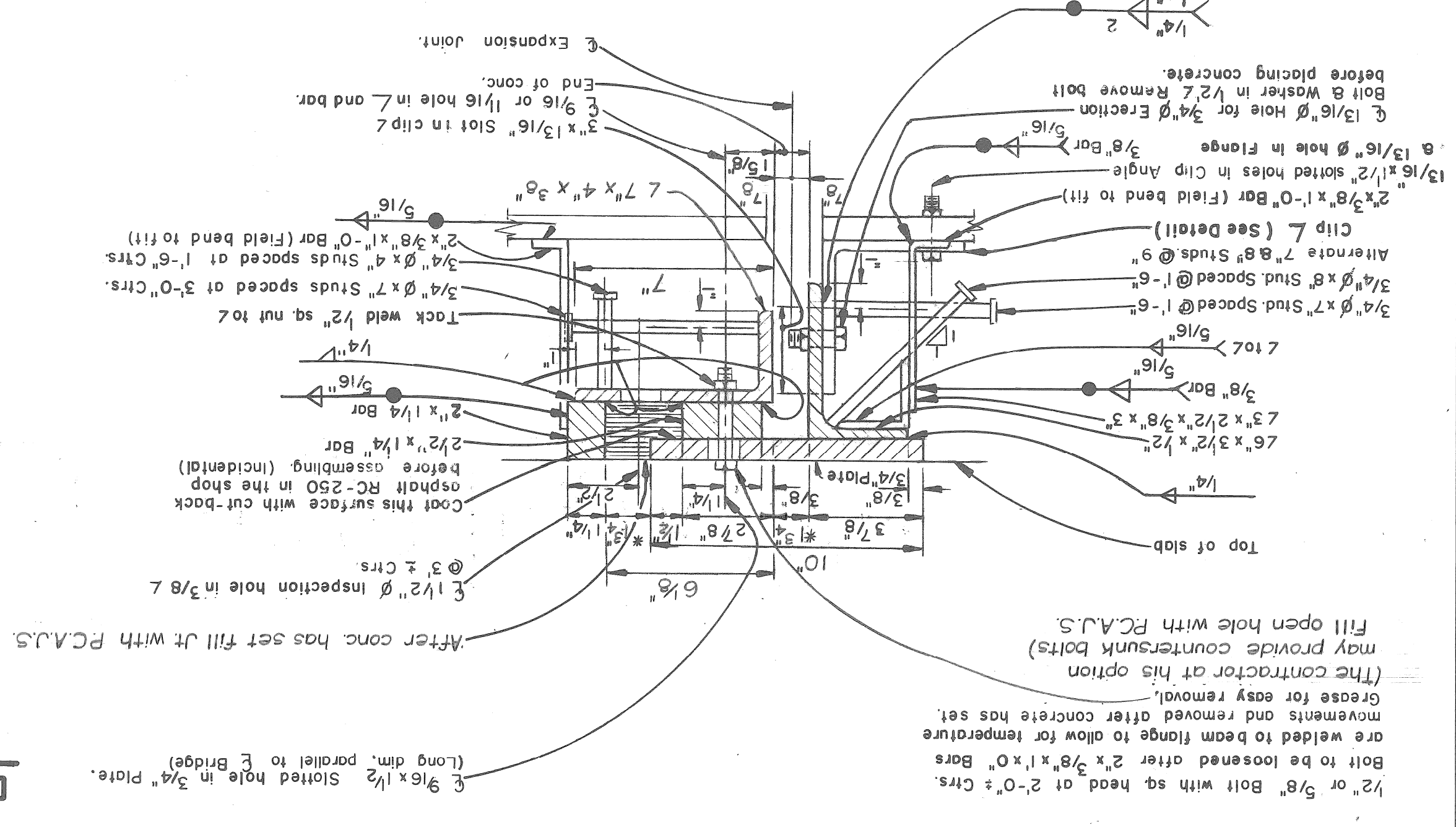
PROJECT NO. PW 990(21)

APPROVED

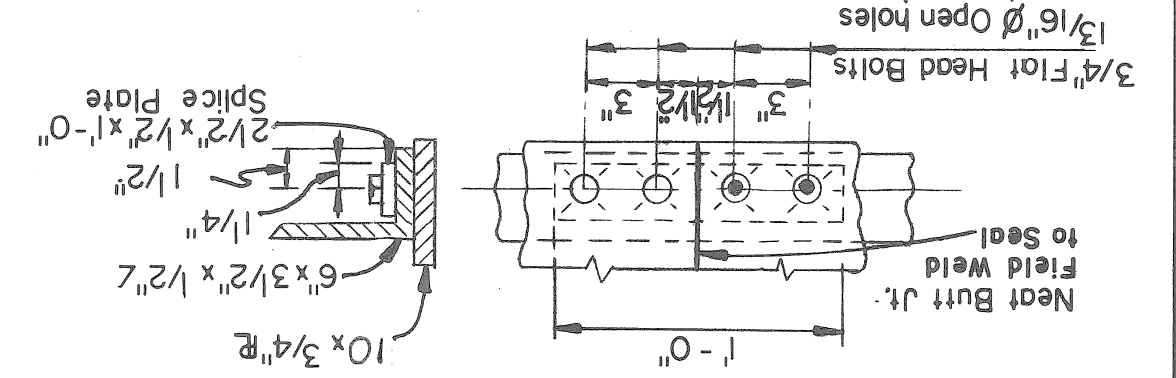
STRUCTURAL ENGINEER

CITY OF DETROIT  
 DEPARTMENT OF PUBLIC WORKS  
 CITY ENGINEERS OFFICE  
 BUREAU OF HIGHWAYS AND EXPRESSWAYS

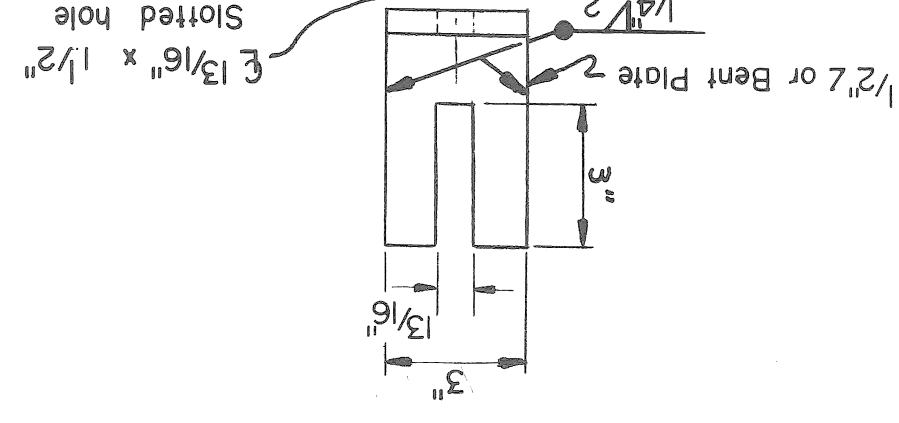
**SECTION-AA**  
 \* 60° F.



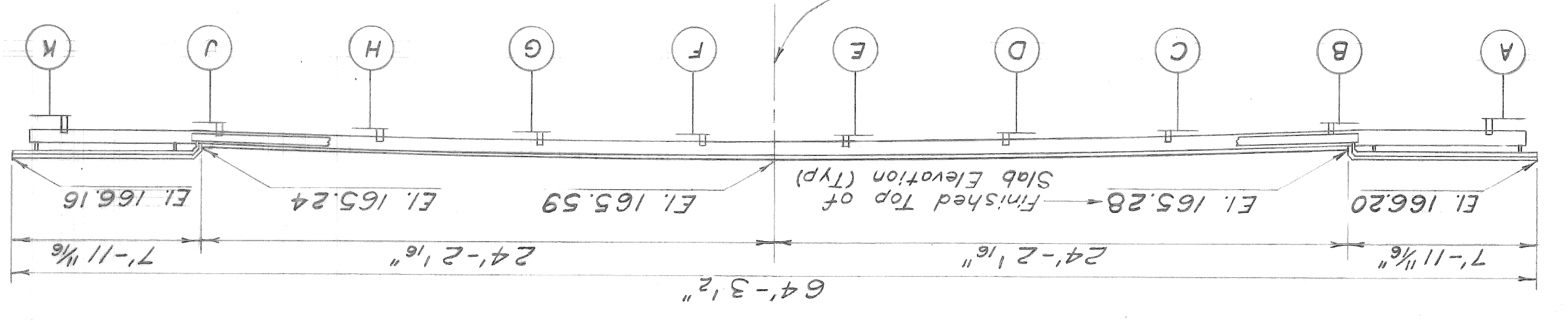
**SPLICE PLATE DETAILS**



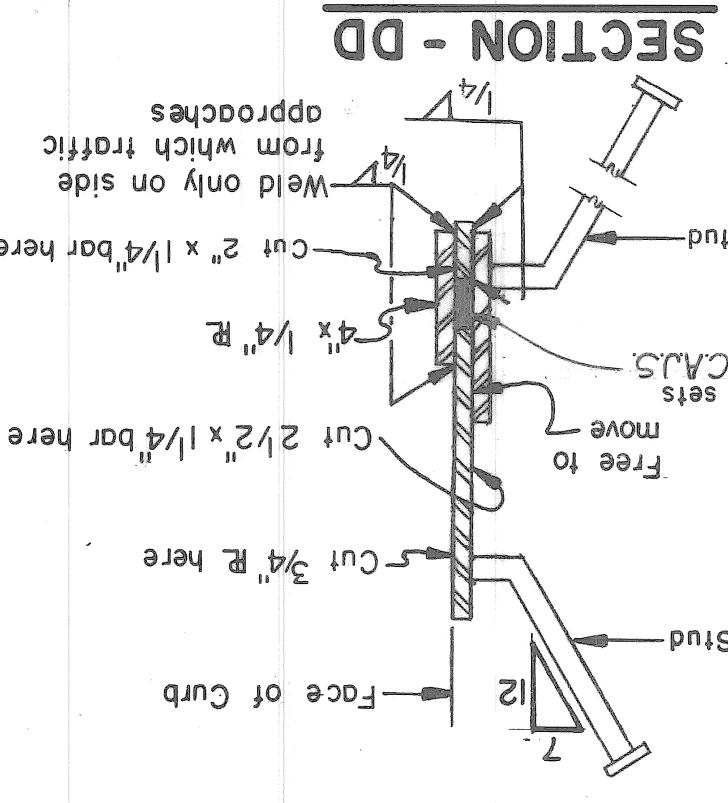
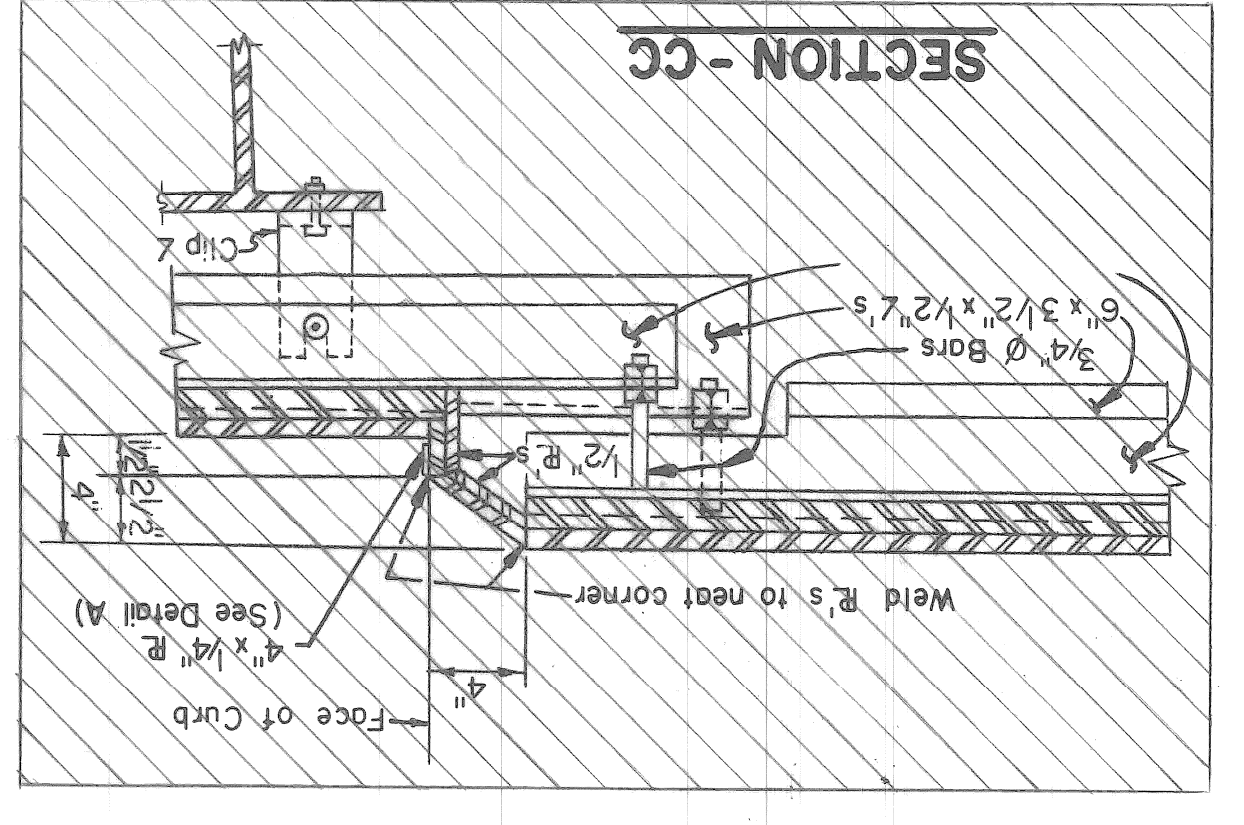
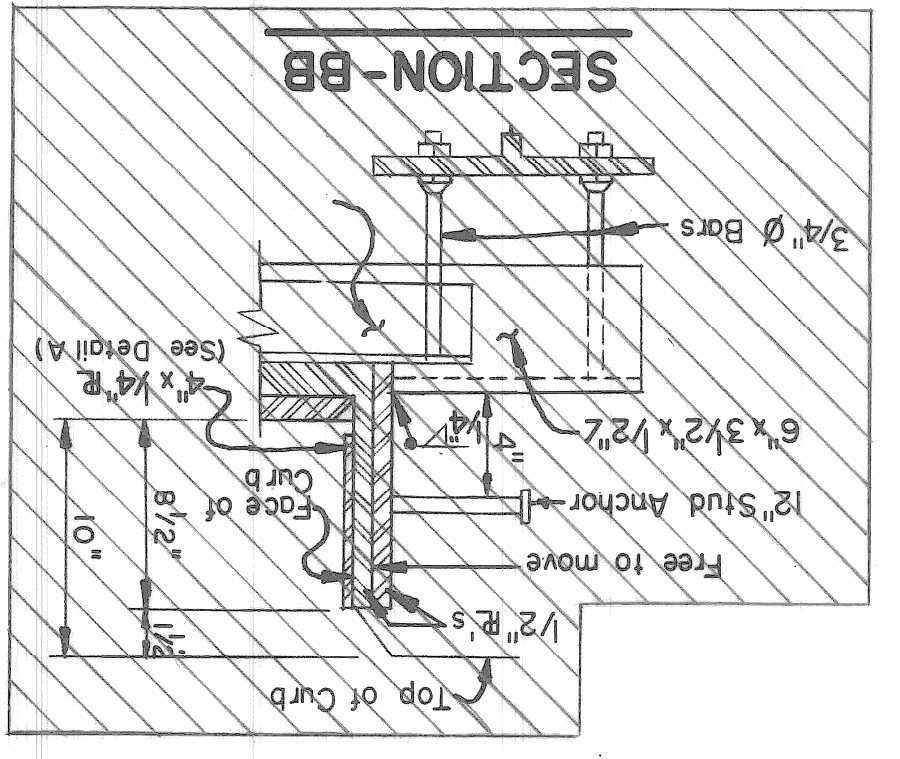
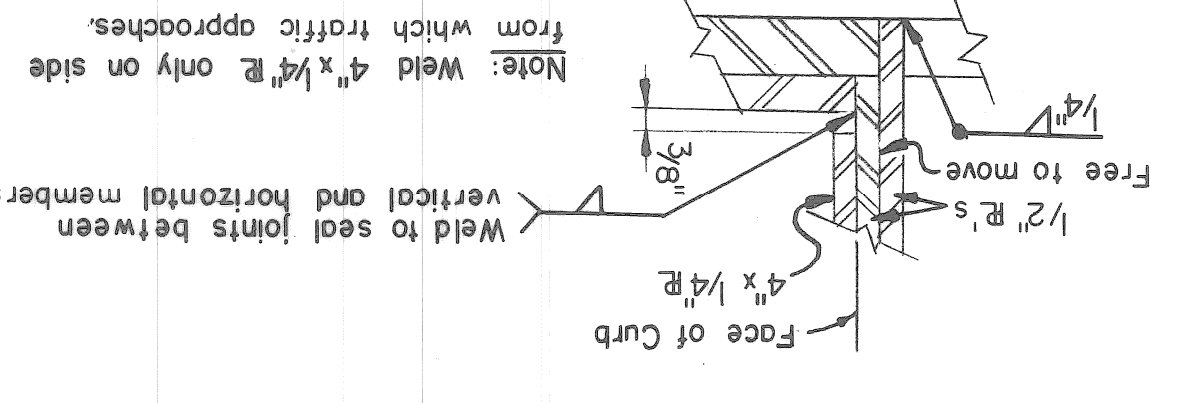
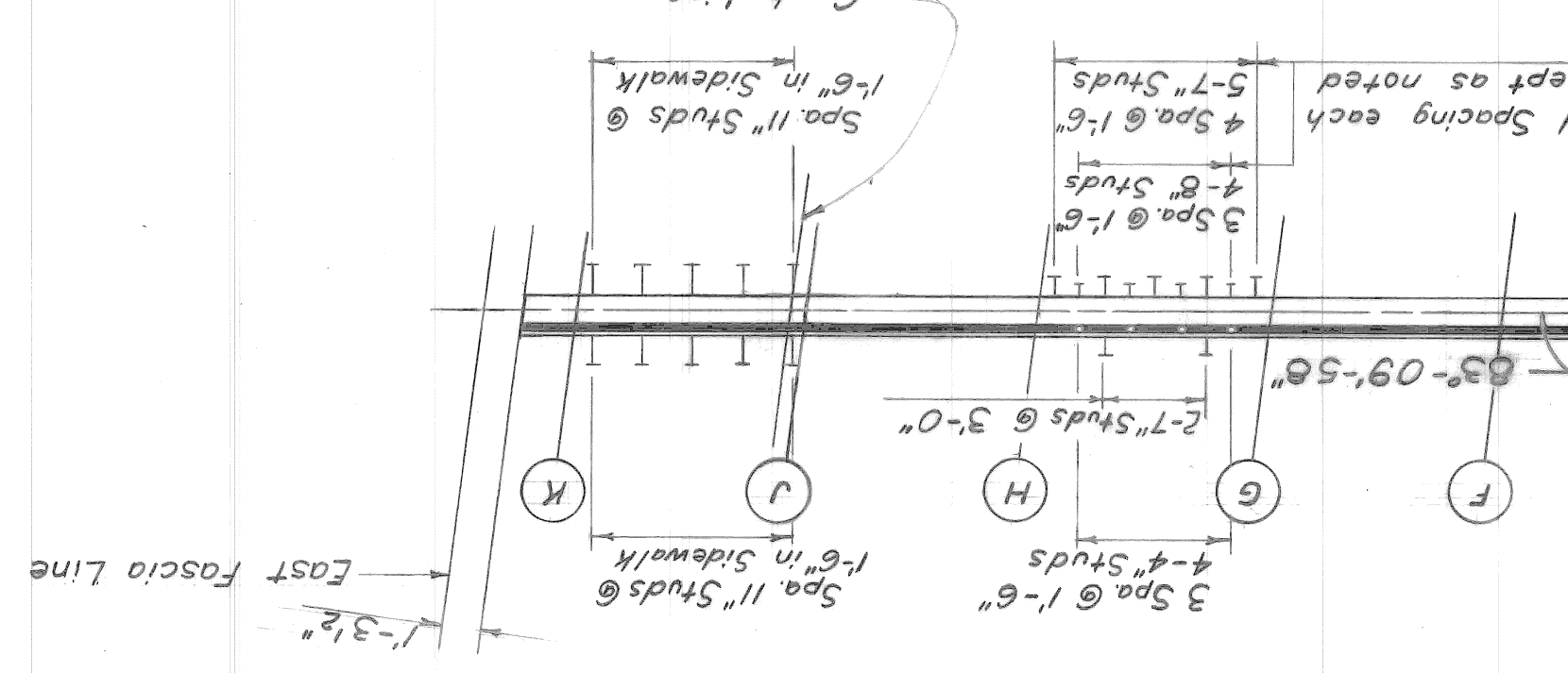
**CLIP 7 DETAIL**



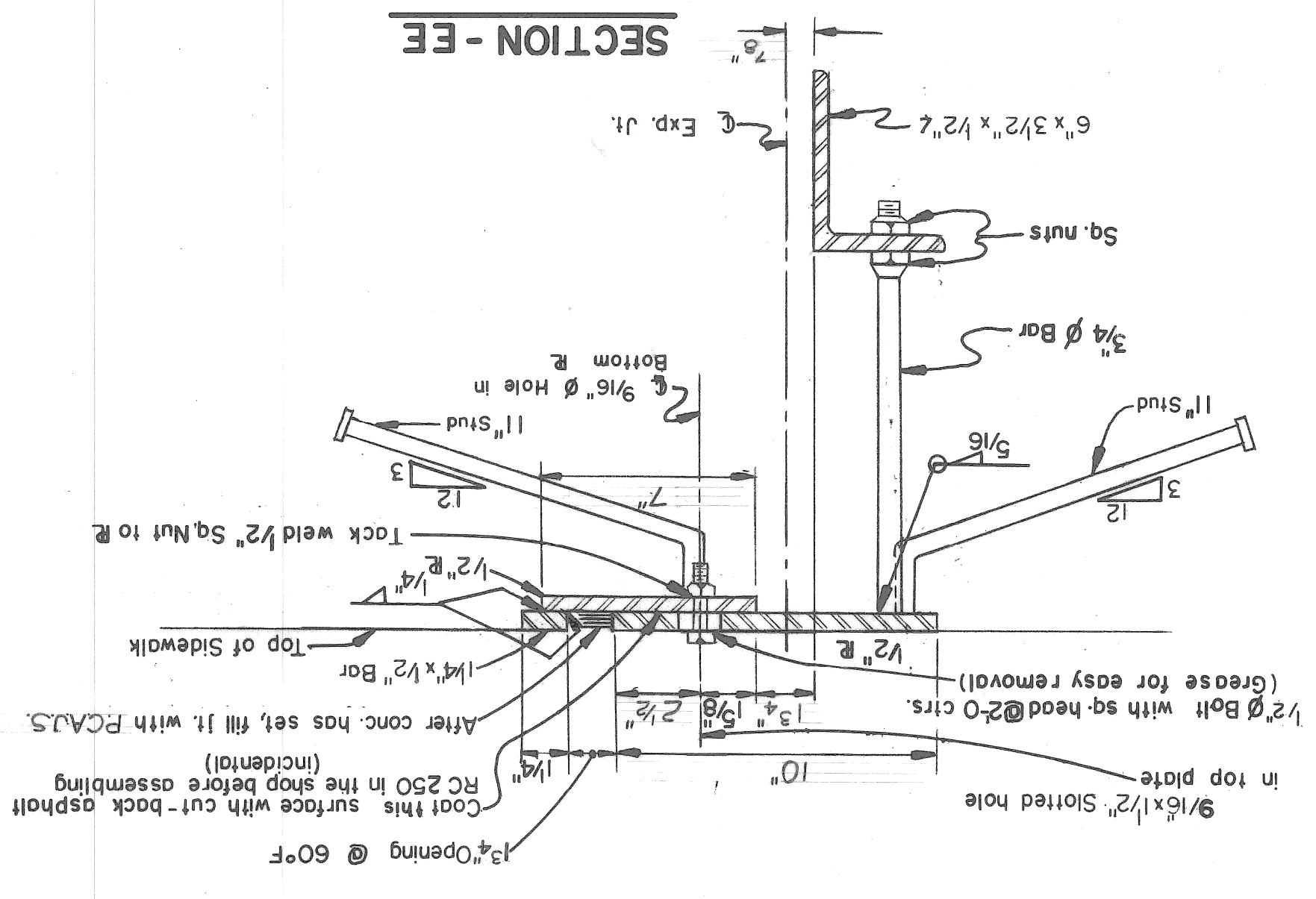
**ELEVATION**



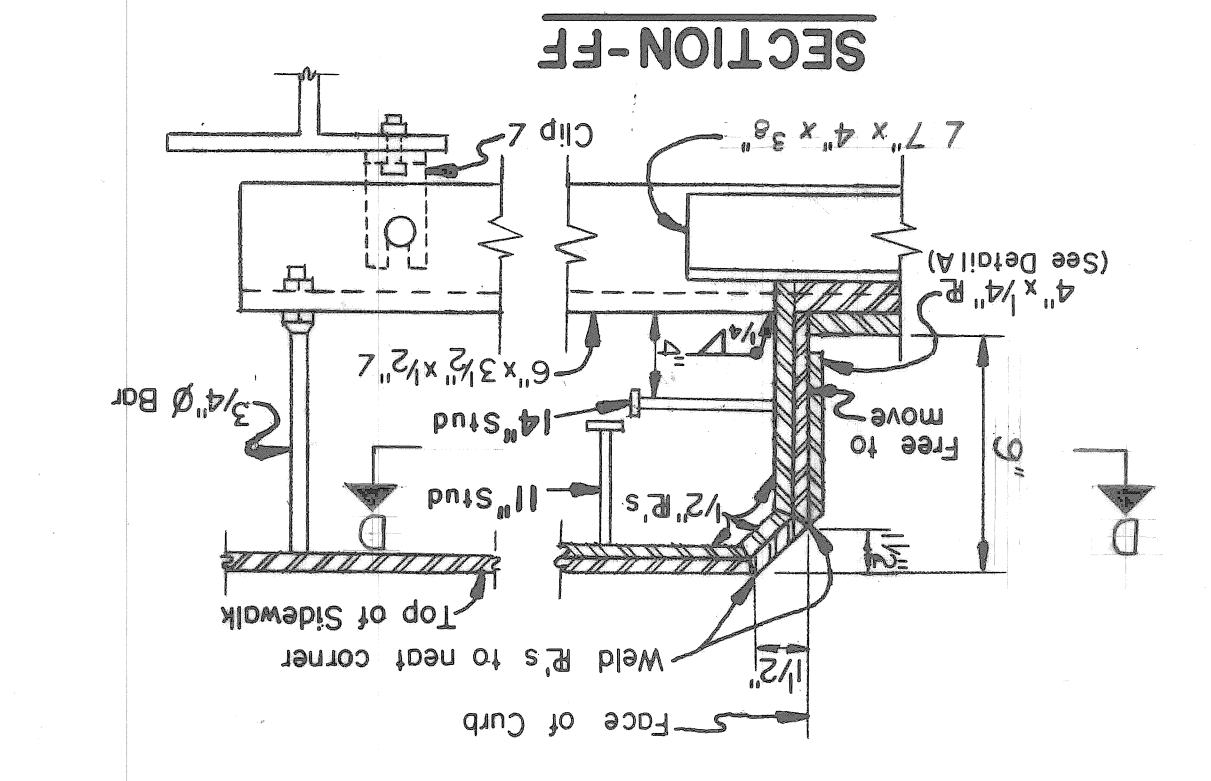
**PLAN**



**SECTION-EE**



**SECTION-FF**



**NOTES:**

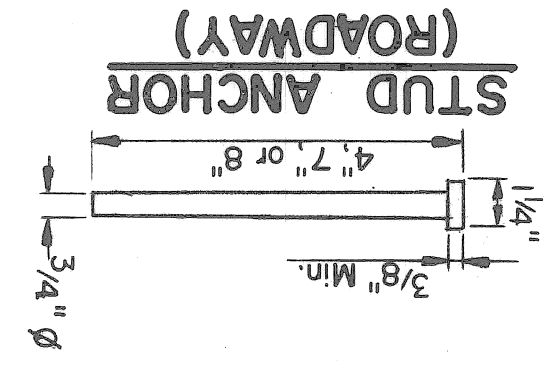
The Metal Expansion Joint shall be bent in the shop to conform with the contour of the top of roadway slab.

Weight of Metal Expansion Joint 4600 lbs.

PCAJ5 denotes Two-component Polyurethane Cold-Applied Joint Sealer

PCAJ5 is included in Superstructure Quantities

**STUD ANCHOR (ROADWAY)**



**STUD ANCHOR (CURB & SIDEWALK)**

