

NOTE:
 Wall construction and utility alterations are included in package contract for control Section 82123K.
 The contractor shall locate all active underground utilities prior to starting work, and shall conduct his operations in such a manner as to insure that those utilities not requiring relocation will not be disturbed.

LEGEND

UTILITY	Existing	Deleted or Abandoned	New Work by Other	New Work by Contractor
Michigan Consolidated Gas Co.	-G-----	-G-----		
Detroit Water Dept.	-W-----	-W-----	W	---S---
Expwy and City of Detroit Sewers	-S-----	-S-----	++++S	
Michigan Bell Telephone Co.	-T-----	-T-----	++++T	
Detroit Edison Co.	-E-----	-E-----	++++E	
Public Lighting Commission	-L-----	-L-----	++++L	
Detroit Fire Dept.	-F-----	-F-----	++++F	

SITUATION PLAN
 Scale: 1"=40'

PLANS PREPARED BY
CITY OF DETROIT
 DEPARTMENT OF PUBLIC WORKS
 CITY ENGINEERS OFFICE
 BUREAU OF HIGHWAYS AND EXPRESSWAYS

APPROVED: *H. Couit*
 STRUCTURAL ENGINEER

JOB No.
 PW990(2)

MICHIGAN DEPARTMENT OF STATE HIGHWAYS
RETAINING WALL
JEFFRIES-FORD INTERCHANGE

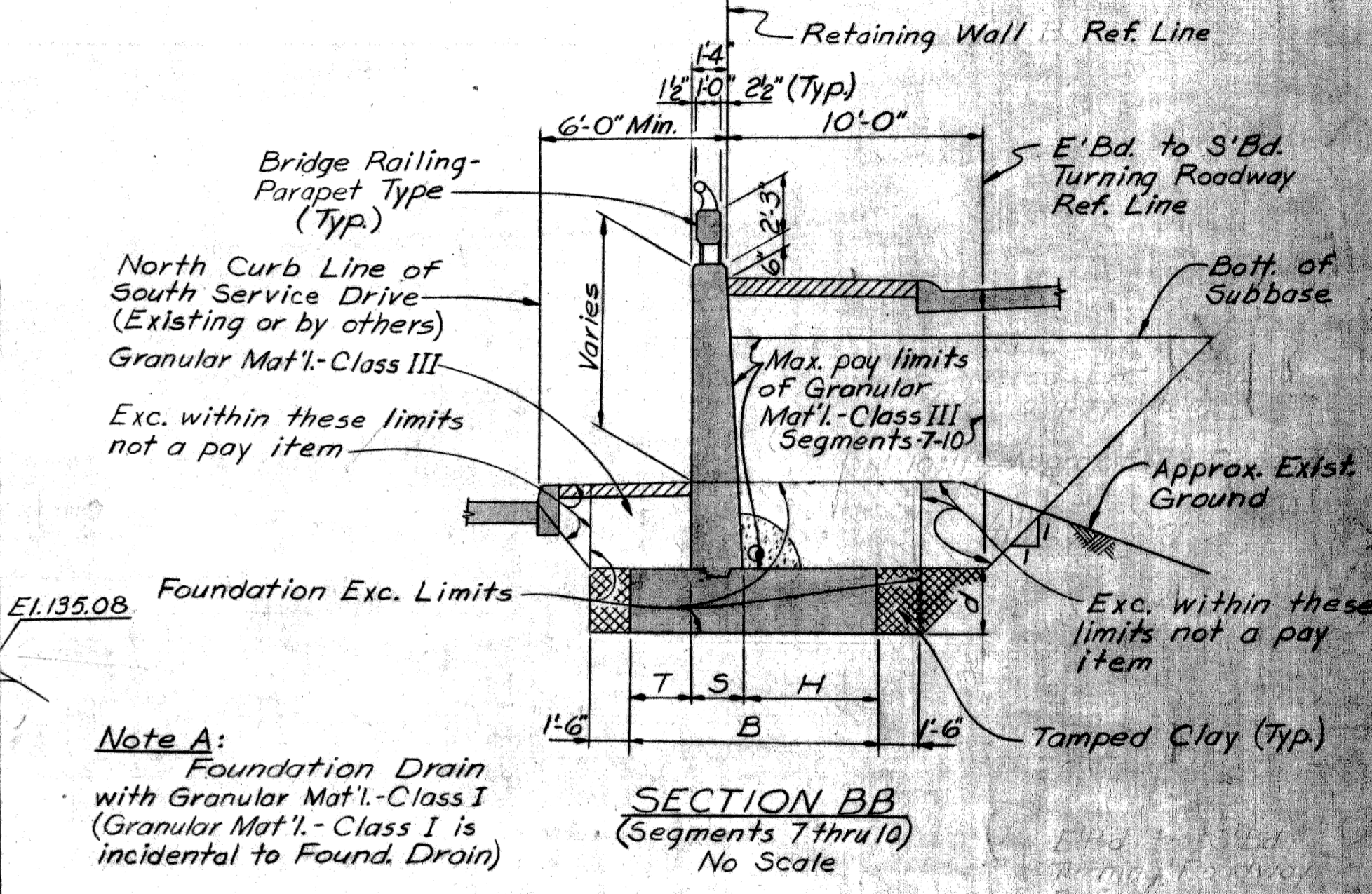
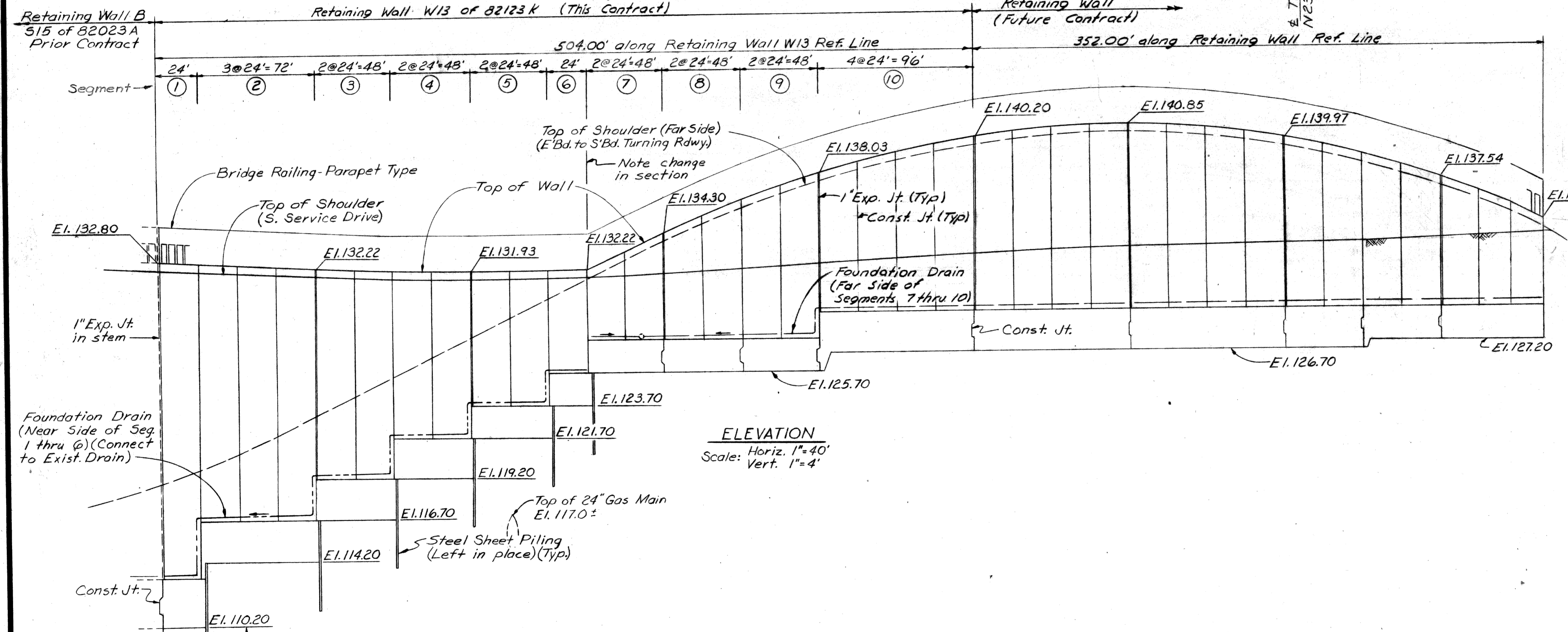
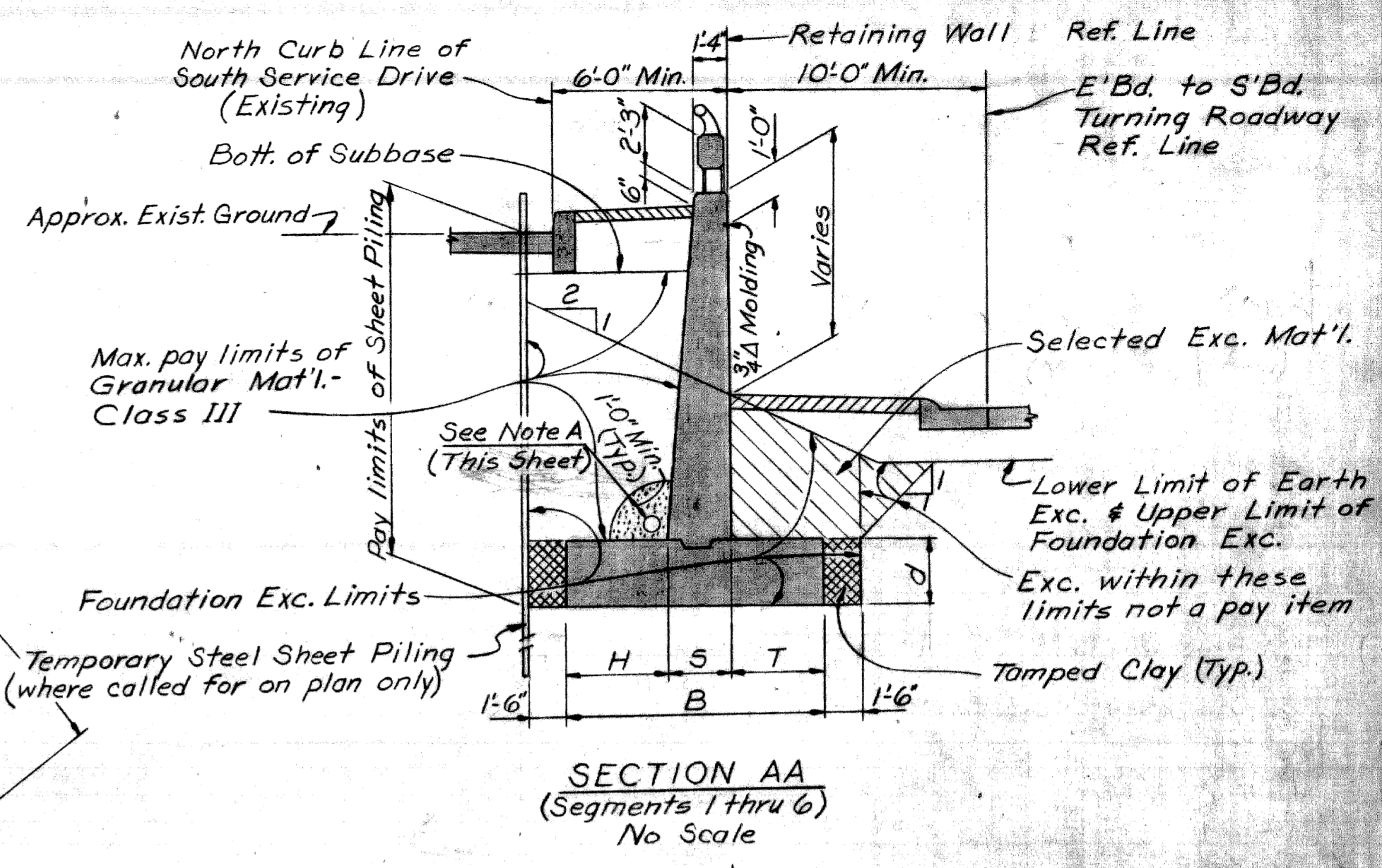
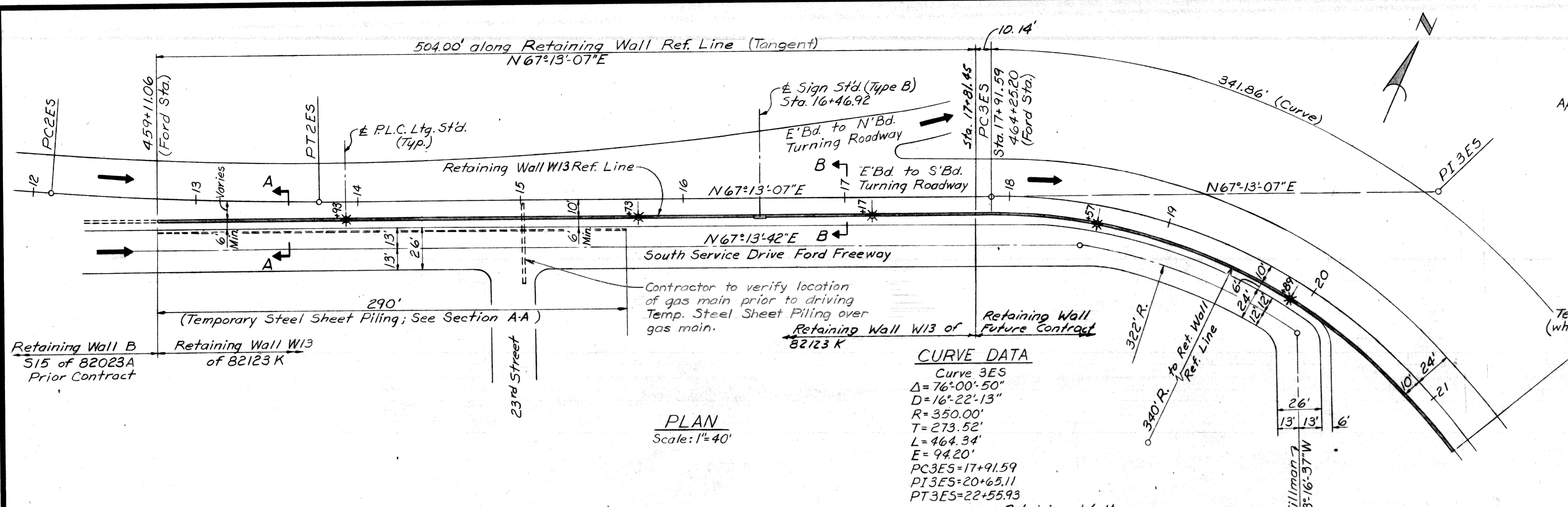
EXISTING UTILITIES AND PROPOSED ALTERATIONS

CITY OF DETROIT

SQUAD BOSS: A. Freiberg 10-67
 DRAWN BY: V. Kercus 12-14-66
 CHECKED BY: L.B. / A.R. 10-67
 SHEET 5 of 12

W13 of 82123K

NO.	DESCRIPTION	DATE	BY



Segment	d	B	T	S	H
1	3'-0"	16'-0"	6'-6"	3'-0"	6'-6"
2	2'-6"	12'-0"	3'-11"	2'-7"	5'-6"
3	2'-6"	9'-6"	2'-6"	2'-5"	4'-7"
4, 10	2'-6"	7'-6"	1'-10"	2'-2"	3'-6"
5, 8	2'-0"	7'-0"	1'-9"	2'-0"	3'-3"
6, 7	2'-0"	6'-0"	1'-6"	1'-10"	2'-8"
9	2'-0"	7'-6"	2'-0"	2'-0"	3'-6"

Notes:
The Contractor shall be responsible for bracing and anchoring the Sheet Piling to protect the work to the satisfaction of the Engineer. Bracing and anchoring is incidental to the sheet piling quantity.
Selected Excavation Material and Tamped Clay are incidental to Unclassified Excavation.
Granular Material-Class III is not a Retaining Wall Pay Item.
A total of 1300 Cu.Yds. for this wall is billed on Road Plans.

PLANS PREPARED BY
CITY OF DETROIT
DEPARTMENT OF PUBLIC WORKS
CITY ENGINEERS OFFICE
BUREAU OF HIGHWAYS AND EXPRESSWAYS

APPROVED: *[Signature]*
STRUCTURAL ENGINEER

JOB No.
PW 990(2)

NO.	DESCRIPTION	DATE	BY

MICHIGAN DEPARTMENT OF STATE HIGHWAYS

RETAINING WALL
JEFFRIES-FORD INTERCHANGE

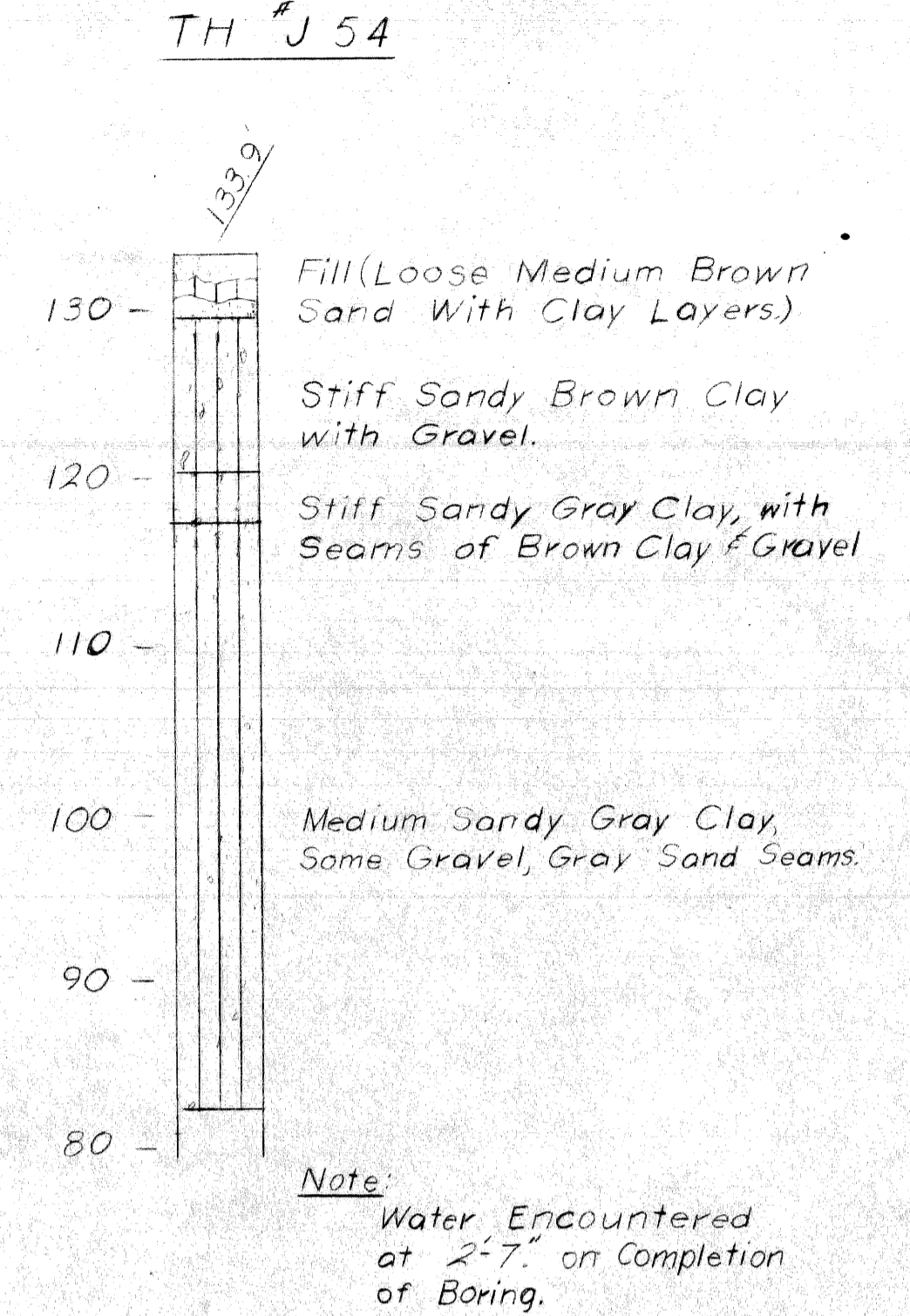
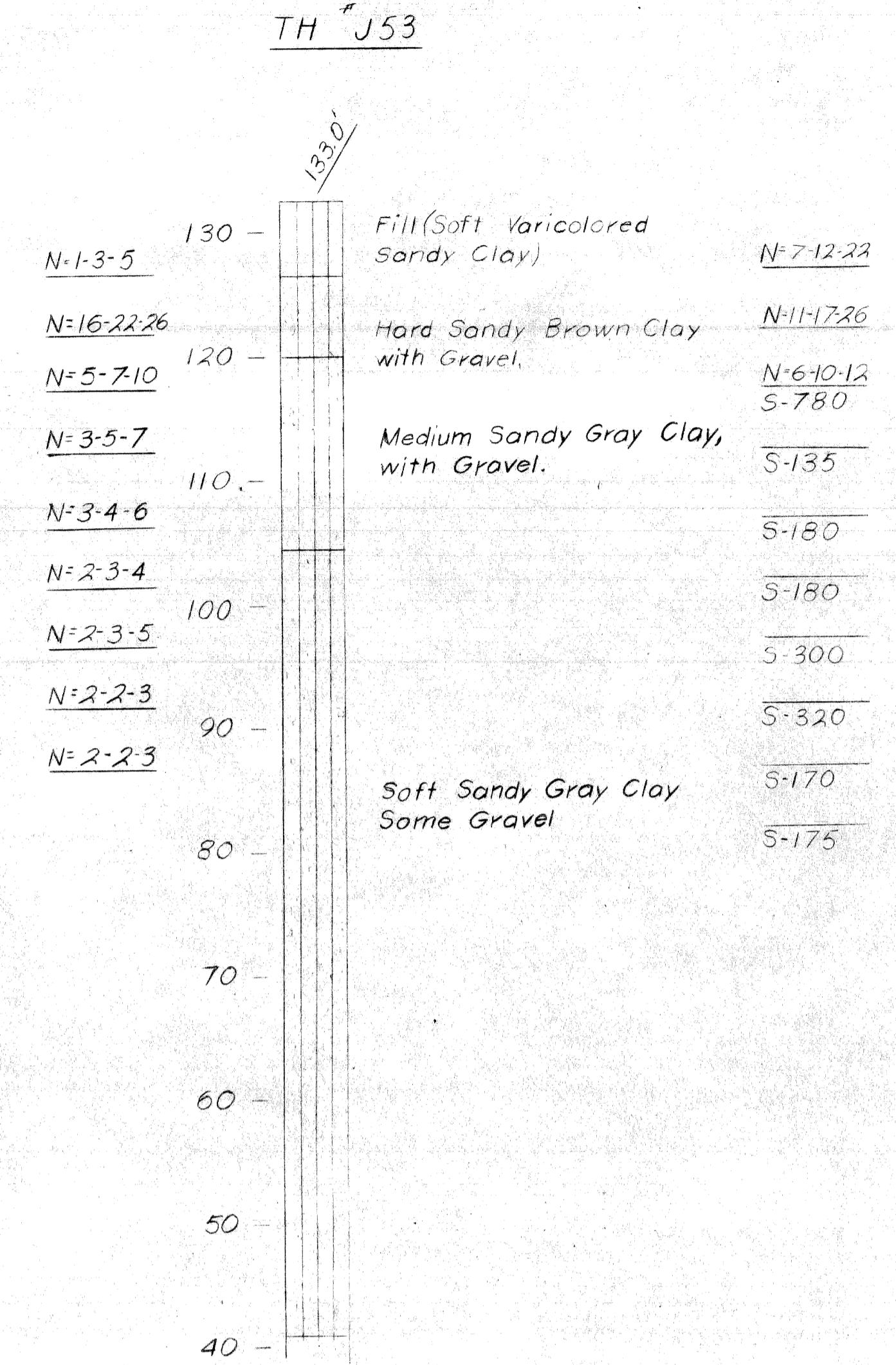
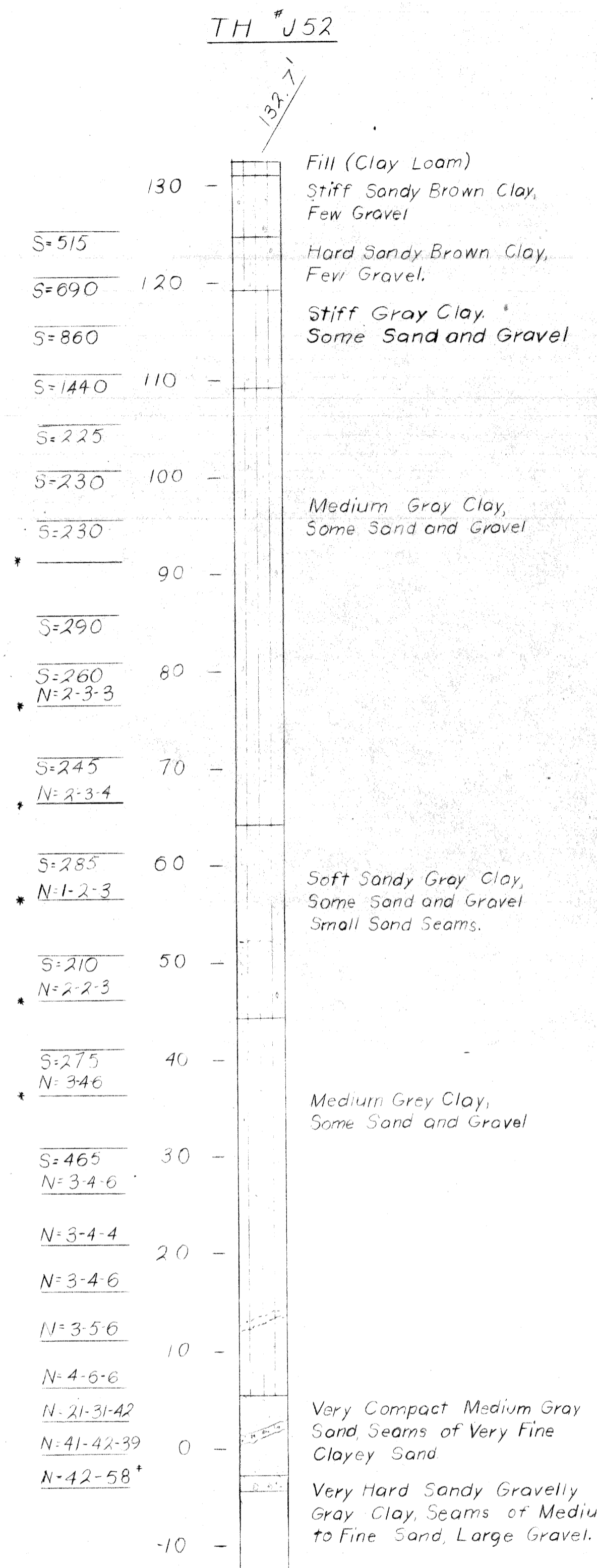
GENERAL PLAN OF STRUCTURE

APPROVED: _____
DESIGN SUPERVISING ENGINEER

APPROVED: _____
ASS'T ENGINEER OF DESIGN

CITY OF DETROIT
SQUAD BOSS: A. Freiberg 6-66
DRAWN BY: Romas 4-66
CHECKED BY: G. Mawala 6-66
SHEET 4 OF 12

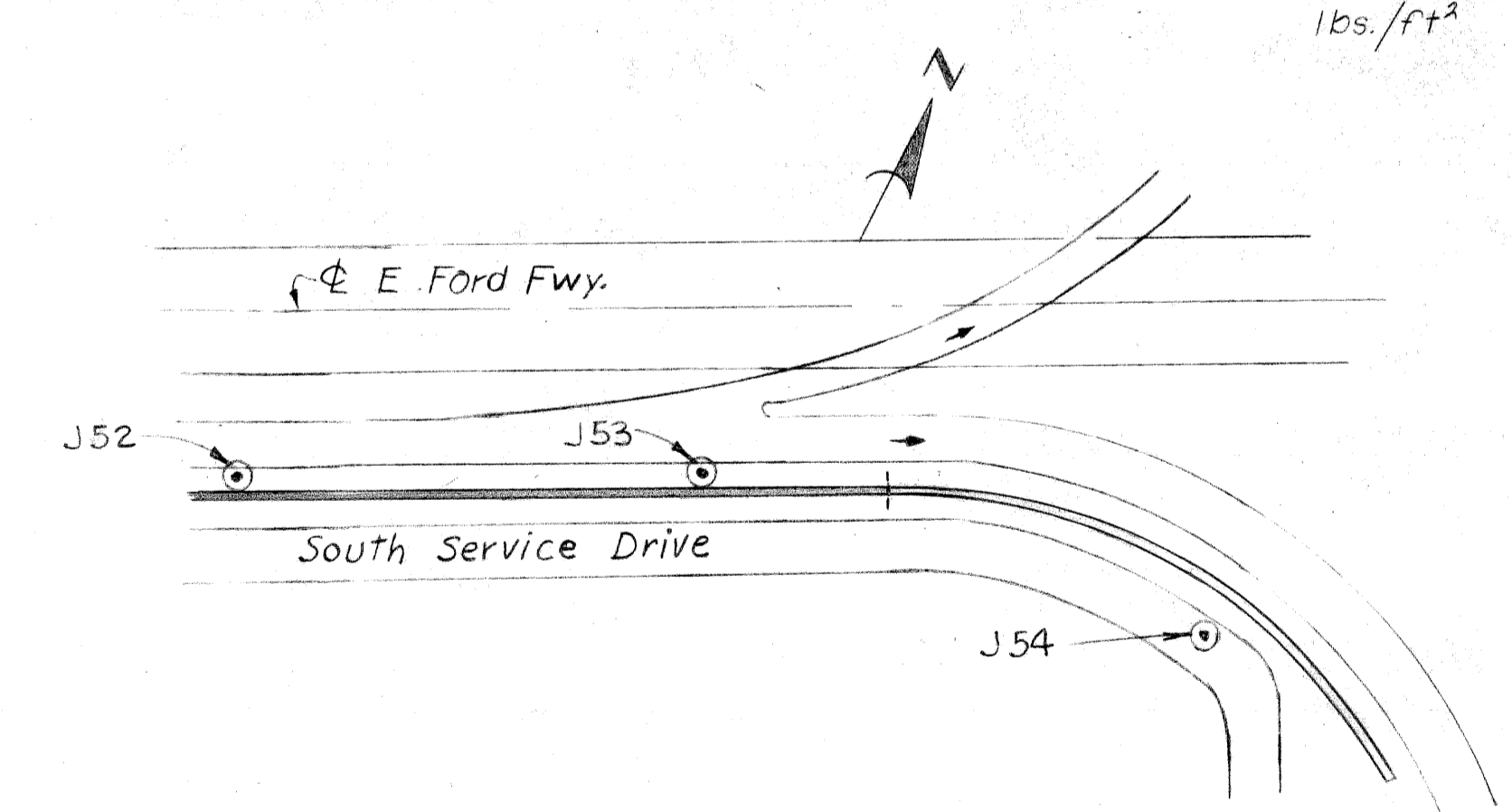
W13 of 82123K



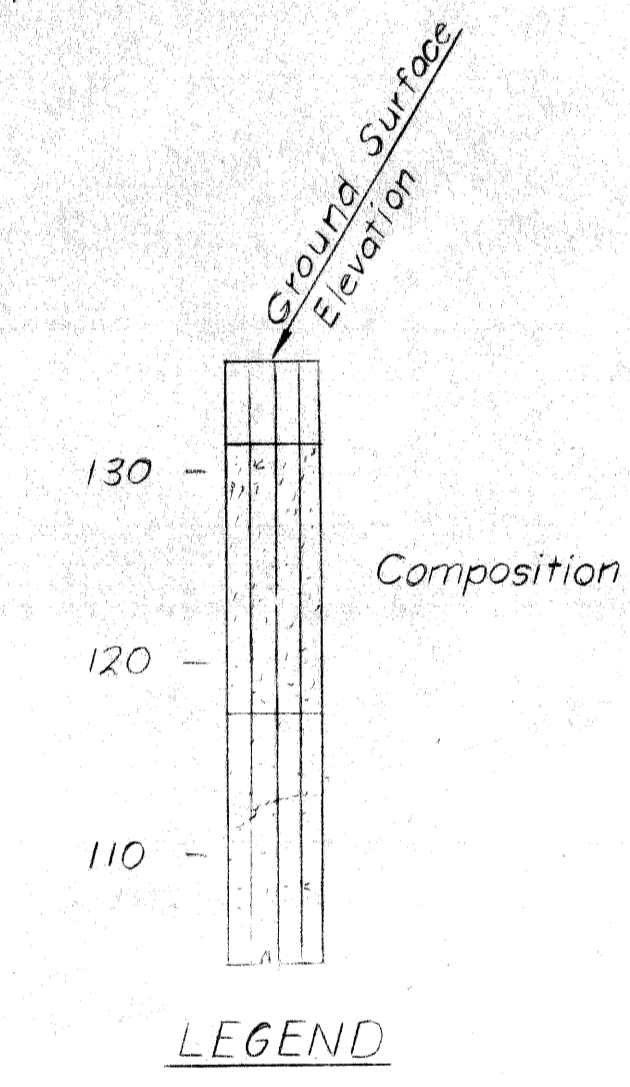
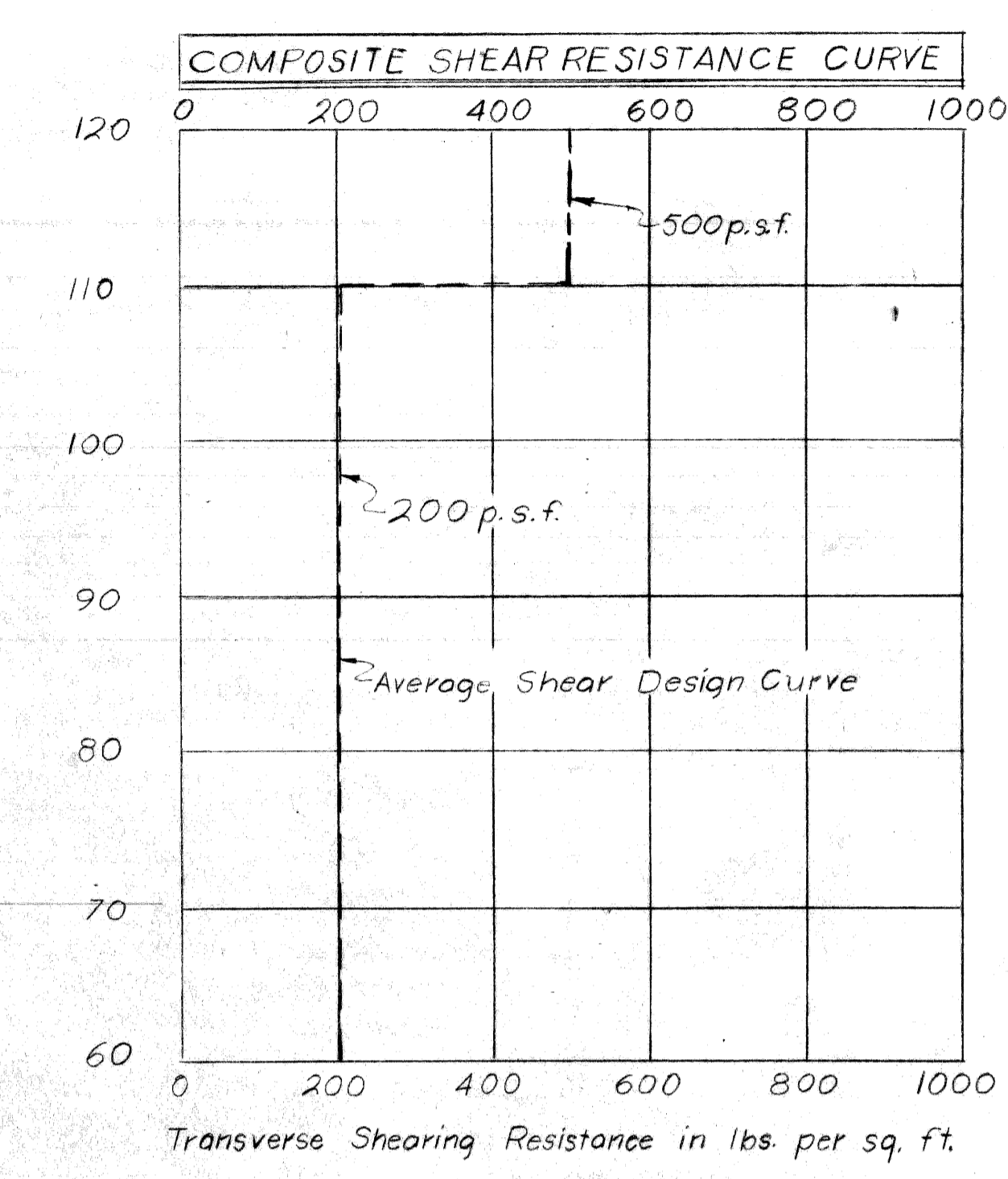
Note:
Water Encountered
at 2'-7" on Completion
of Boring.

Blow Count
Transverse Shear
Resistance in
lbs./ft²

N=5
S=250



Note:
Water at 26' on
Completion of Boring.
* Sampler was driven 5"



N. Indicates the number of blows required to drive the 2" ϕ O.D. Sampler 6" (or as noted) using a 140 lb hammer falling 30". Where blow count is not shown, Sampler was levered, pushed or hand driven.

S. Indicates Transverse Shearing Resistance in lbs. per sq. ft. as determined by M.S.D.H. Standard Test.

* Indicates no sample taken.

Boring J 53 is from Field report only
Borings J 52 and J 54 are from Lab reports.
All elevations based on City of Detroit Datum. See Sh. 2 for list of Construction Bench Marks.

PLANS PREPARED BY
CITY OF DETROIT
DEPARTMENT OF PUBLIC WORKS
CITY ENGINEERS OFFICE
BUREAU OF HIGHWAYS AND EXPRESSWAYS

APPROVED: *J. Carst*
STRUCTURAL ENGINEER

JOB No.
PW 990(2)

MICHIGAN STATE HIGHWAY DEPARTMENT
RETAINING WALL
JEFFRIES-FORD INTERCHANGE
LOG OF SOIL BORINGS

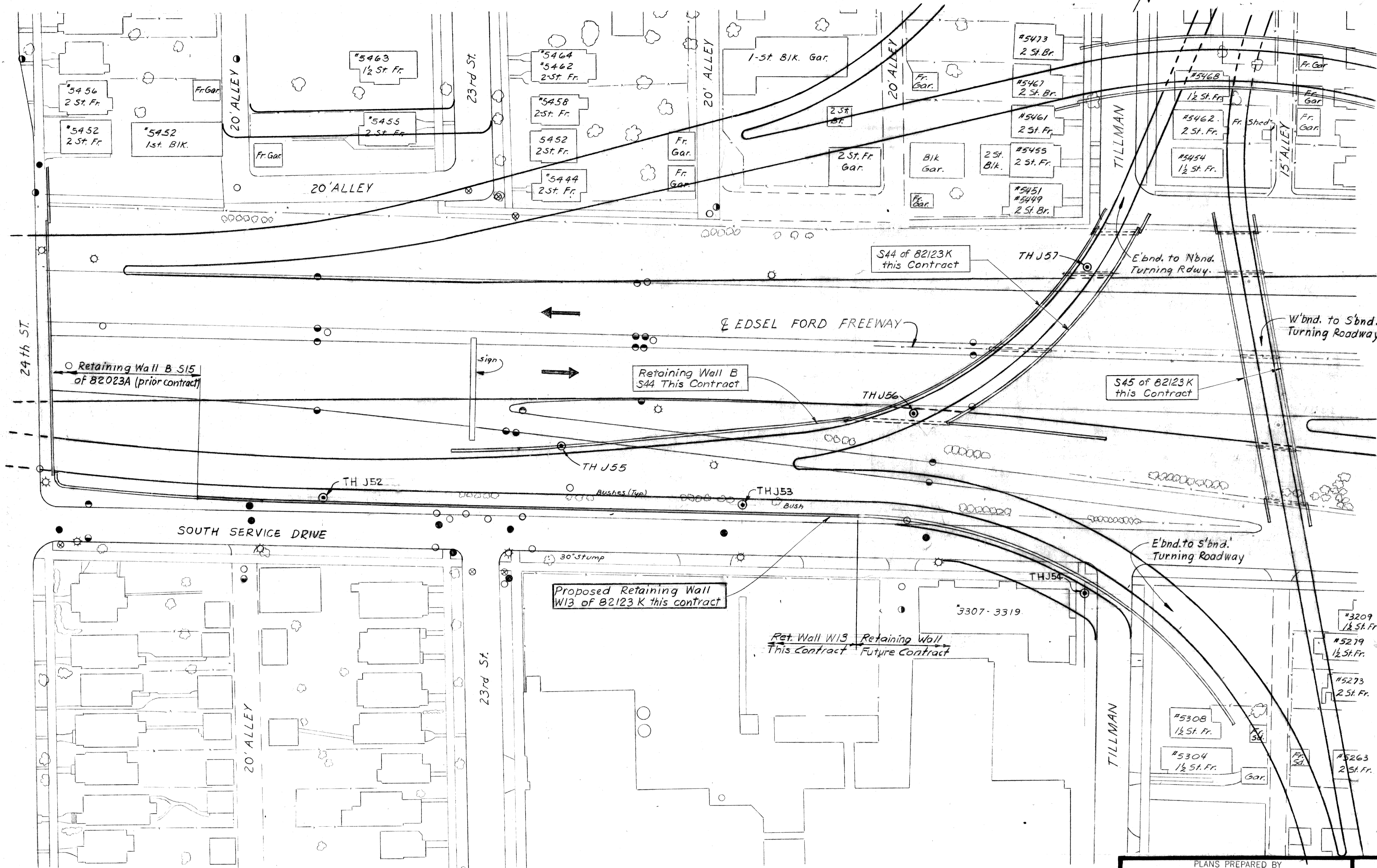
Work this sheet with sheets 2 & 4

APPROVED: _____ DESIGN SUPERVISING ENGINEER

APPROVED: _____ ASST ENGINEER OF DESIGN

CITY OF DETROIT
SQUAD BOSS: *A. Freberg* 10-67
DRAWN BY: _____
CHECKED BY: *T. Baker* 12-67
SHEET 3 OF 12
W13 of 82123 K

NO.	DESCRIPTION	DATE	BY



LEGEND

- ☉ Tree
- Fence
- Sewer Inlet or Catch Basin
- ⊗ Water Main, Gate Valve & Well
- P.L.C. Cable Manhole
- Detroit Edison Co. Cable Manhole
- ⊖ M.B.T. Pole
- ⊖ M.B.T. Cable Manhole
- Sewer Manhole
- ⊙ Test Hole for Soil Profile
- ⊛ P.L.C. Light Pole

NOTES

The topography shown represents conditions existing at the time the field survey was made. These conditions may have been altered by the operations of others before this work is started.

Bench Marks are referenced to the City of Detroit Datum.

C.B.M. #34 Elev 136.07 Arrow on Hydrant S.W. Corner 24th St. and South Service Dr.

C.B.M. #35 Elev 134.47 Arrow on Hydrant S.E. corner 23rd St. and South Service Dr.

This set of drawings covers the construction of Retaining Wall W13 and incidental work. All other work is included in the Road Plans which are a part of this contract. This Retaining Wall is part of an Interchange and all area shown is within M.D.S.H. R.O.W. Removal of Fences and Buildings is not a part of this Contract.

SURVEY PLAN
Scale: 1" = 40'

PLANS PREPARED BY
CITY OF DETROIT
DEPARTMENT OF PUBLIC WORKS
CITY ENGINEERS' OFFICE
BUREAU OF HIGHWAYS AND EXPRESSWAYS

MICHIGAN DEPARTMENT OF STATE HIGHWAYS

**RETAINING WALL
JEFFRIES-FORD INTERCHANGE**

APPROVED: *[Signature]*
STRUCTURAL ENGINEER

JOB No.
PW990(2)

GENERAL PLAN OF SITE

REVISIONS			
NO.	DESCRIPTION	DATE	BY

APPROVED: _____
DESIGN SUPERVISING ENGINEER

APPROVED: _____
ENGINEER OF DESIGN - CONSULTANTS

SQUAD BOSS	A. Freiberg	10-67
DRAWN BY	SEIDLIN	5-11-66
CHECKED BY	L.B.J./A.E.	10-67
SHEET	2	OF 12

W13 of 82123K