

STATE OF MICHIGAN DEPARTMENT OF STATE HIGHWAYS

PLANS OF PROPOSED MICHIGAN PROJECT 1-UI-96-4 () STATE PROJECT 182123 E&F PARTS 1 & 2

G.I. Plans

ROUTE	STATE PROJECT NO.	FEDERAL NO.	SHEET NO.	TOTAL SHEETS
1-96	82123		1	

THE IMPROVEMENTS COVERED BY THESE PLANS SHALL BE DONE IN ACCORDANCE WITH THE MICHIGAN DEPARTMENT OF STATE HIGHWAYS CURRENT STANDARD SPECIFICATIONS AND SUPPLEMENTAL SPECIFICATIONS.

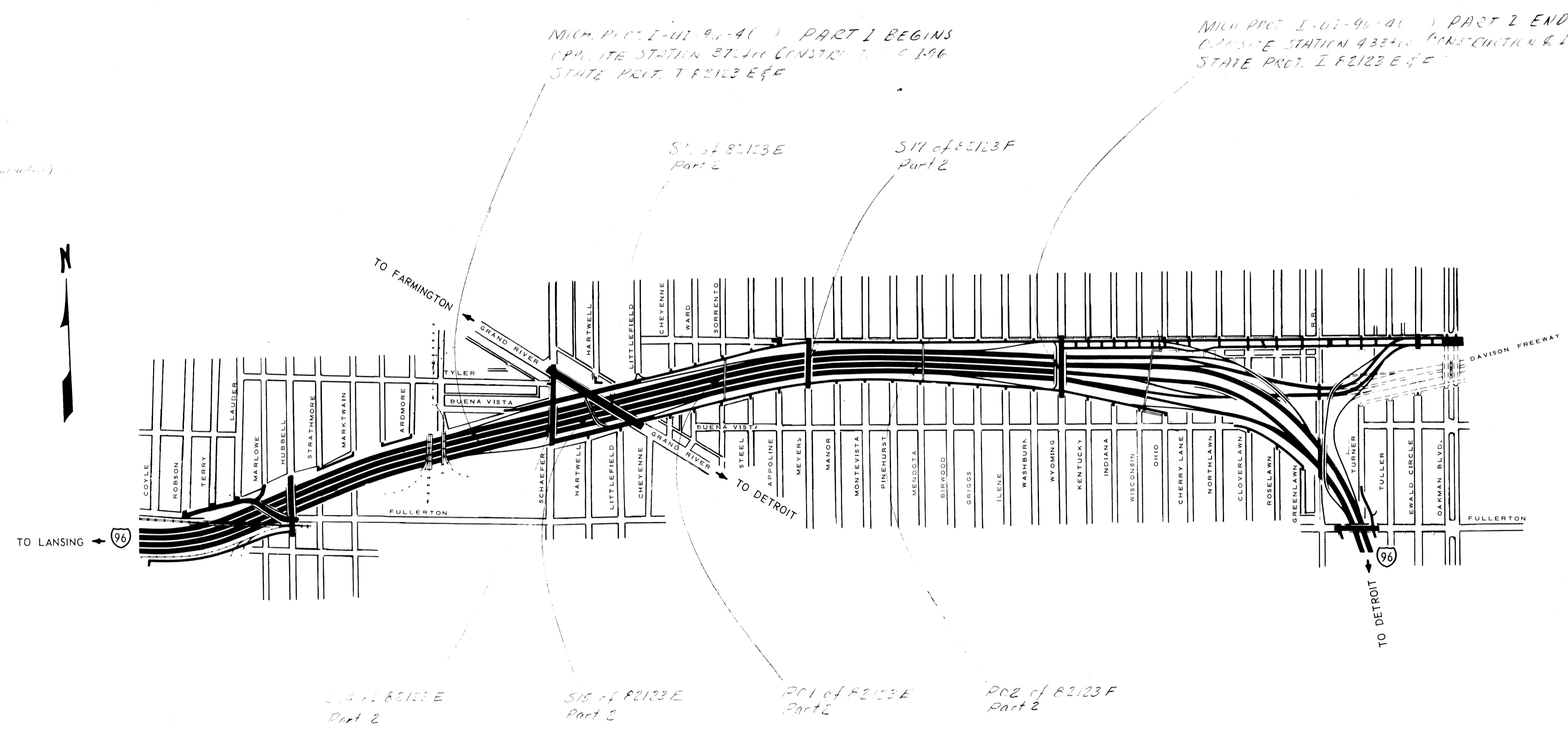
LEGEND

- A.D.T.
- D.H.V.
- COMM. %
- DESIGN SPEED

A proposed beautification project is under study by the Outside Development Section. — Yes, — No.

CITY OF DETROIT
WAYNE COUNTY

ROAD PLANS	SHEET NO'S.
Title	1
Typical Cross Sections	2-3
Note Sheet	4 (not included)
General Plan & Expressway Profiles	5-7
Construction Procedure	8
Alignment	9-15
Removals	16-22
Temporary Roads	23-25
E'bd Service Rd Plan & Profile	27-33
W'bd Service Rd Plan & Profile	34-40
W'bd "On" Ramp Plan & Profile	41-43
E'bd "Off" Ramp Plan & Profile	44-46
Bridge Approaches	47-51
Detail Grades	
Special Details	
Watermain Plans	
Lighting Plans	
General Utilities	51-58
Quantity Sheets	



BLUE PRINT
SECTION
DEC 31 1963
DEPT. OF STATE HIGHWAYS

TITLE SHEET LEGEND

PROPOSED PROJECT PRESENT OR FUTURE	
BITUMINOUS	
GRAVEL	
UNIMPROVED OR CITY STREET	
COUNTY LINE	
CITY OR VILLAGE LIMITS	
TOWNSHIP LINE	
SECTION LINE	
RAILROADS	

ITEM NO. <i>82123, Var. Width Concrete Sv. Rds. Structures, Sewer Alterations, Watermain & Lighting</i>			
CONTRACT FOR <i>Improvements & Lighting</i>			
APPROVALS			
CHECKED	DESIGN ENGINEER	DATE	
RECOMMENDED FOR APPROVAL	ENGINEER OF BRIDGE AND ROAD DESIGN	DATE	
RECOMMENDED FOR APPROVAL	TRAFFIC DIVISION	DATE	
RECOMMENDED FOR APPROVAL	CONSTRUCTION DIVISION	DATE	
RECOMMENDED FOR APPROVAL	CHIEF - BUREAU OF ENGINEERING	DATE	
DEPARTMENT OF STATE HIGHWAYS HENRIK E. STAFSETH - STATE HIGHWAY DIRECTOR			
APPROVED BY		DEPUTY STATE HIGHWAY DIRECTOR	DATE
PLANS PREPARED BY MICHIGAN DEPARTMENT OF STATE HIGHWAYS		U.S. DEPARTMENT OF TRANSPORTATION FEDERAL HIGHWAY ADMINISTRATION APPROVED BUREAU OF PUBLIC ROADS	
SQUAD ROUSH		FOR THE DIVISION ENGINEER	
82123 E & F	STATE PROJECT NO. 82123	FEDERAL PROJECT	SHEET NO. 1

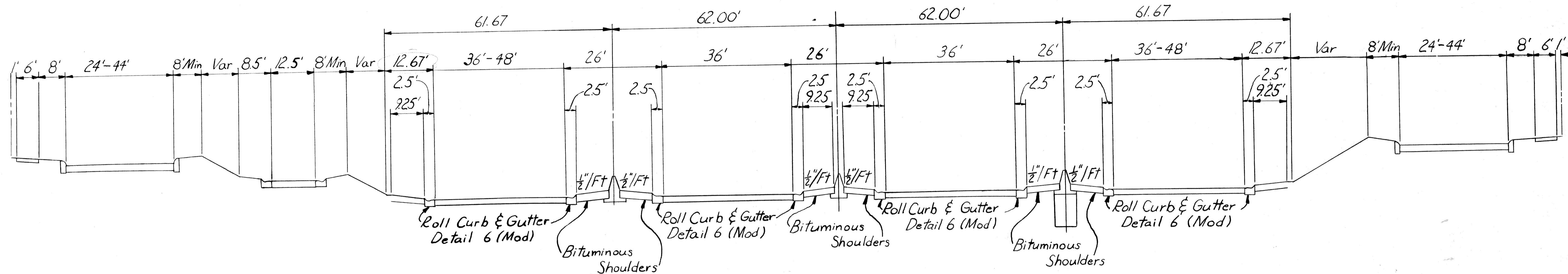
STATE PROJECT NO. 182123 E&F PARTS 1 & 2
S17 of 82123F
Meyers

SQUAD R. E. RUSH

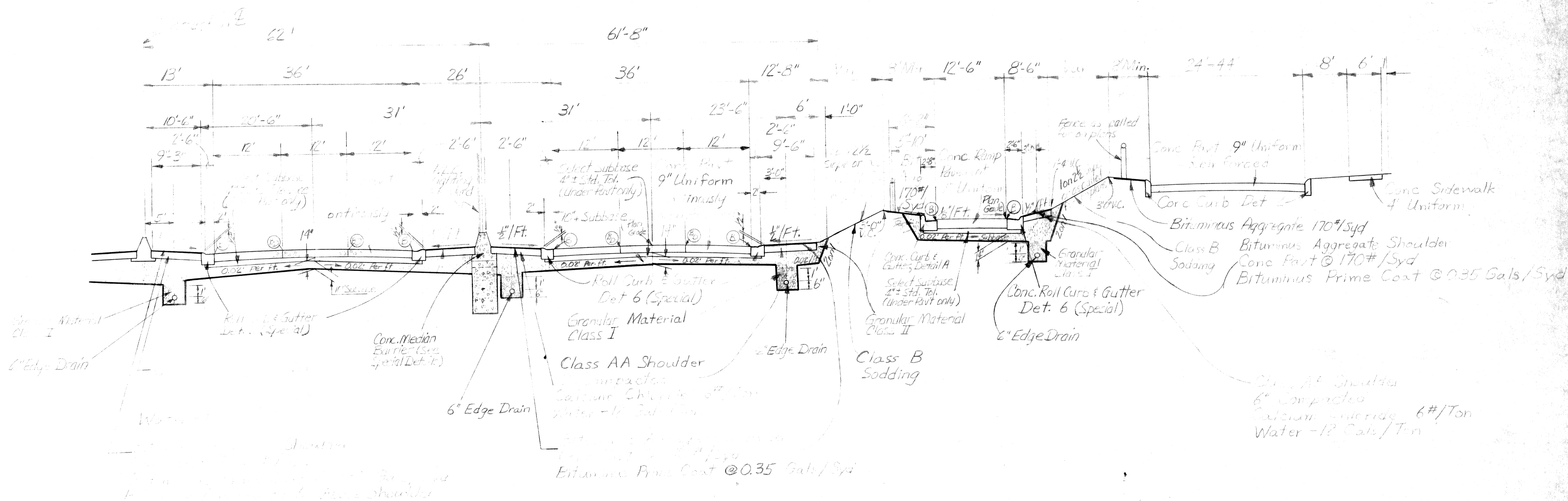
TYPICAL CROSS-SECTIONS

S.P.R. DIV. NO.	STATE	PROJ. NO.	FISCAL YEAR	SHEET NO.	TOTAL SHEETS
4	MICH.			2	
ROUTE	STATE PROJECT	COUNTY		SHEET NO.	TOTAL SHEETS

S.P.R. DIV. NO.	STATE	PROJ. NO.	FISCAL YEAR	SHEET NO.	TOTAL SHEETS
4	MICH.			2	
ROUTE	STATE PROJECT	COUNTY		SHEET NO.	TOTAL SHEETS



DEPRESSED DUAL-DUAL ROADWAY



TYPICAL HALF SECTION FOR DUAL-DUAL ROADWAY
 EQUIP AND SERVICE RD.

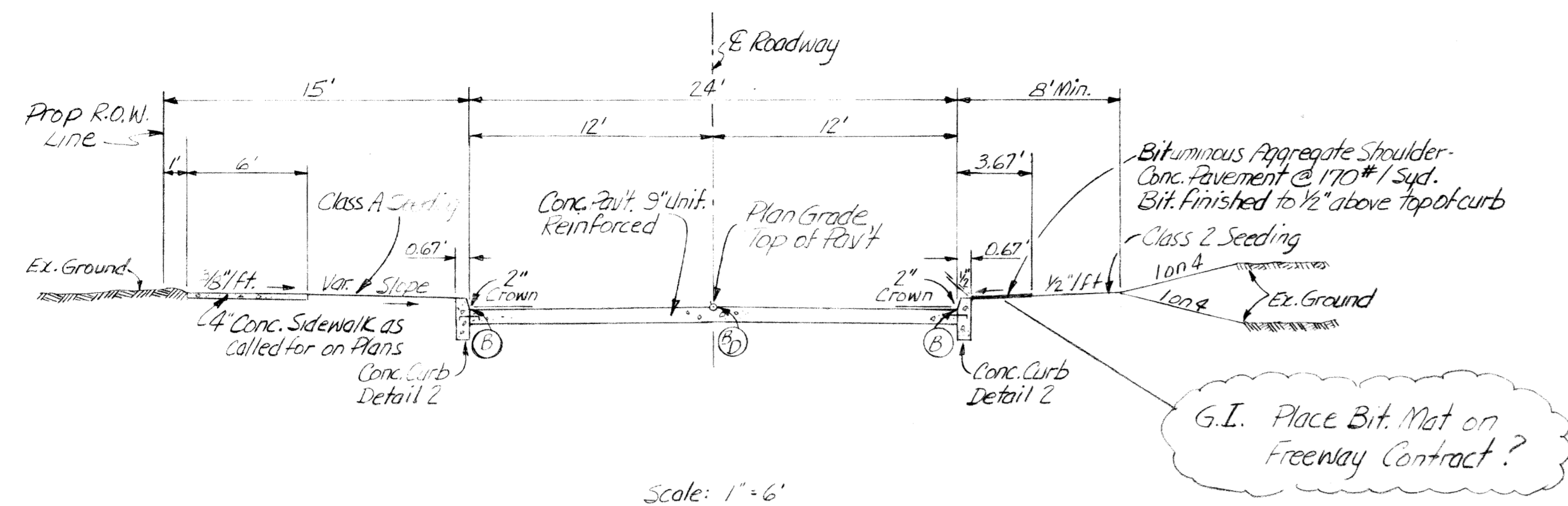
Scale: 1" = 10' Horizontal

SQUAD R. E. ROUSH

TYPICAL CROSS-SECTIONS

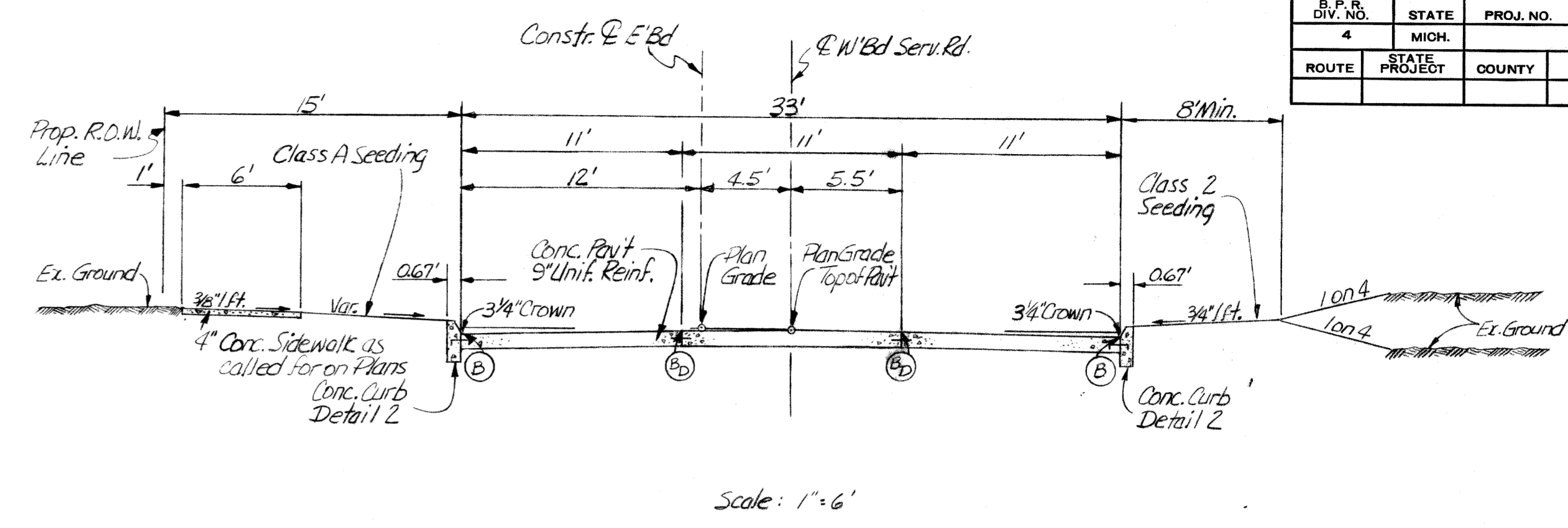
B.P.R. DIV. NO.	STATE	PROJ. NO.	FISCAL YEAR	SHEET NO.	TOTAL SHEETS
4	MICH.			3	
ROUTE	PROJECT	COUNTY		SHEET NO.	TOTAL SHEETS

B.P.R. DIV. NO.	STATE	PROJ. NO.	FISCAL YEAR	SHEET NO.	TOTAL SHEETS
4	MICH.				
ROUTE	PROJECT	COUNTY		SHEET NO.	TOTAL SHEETS



Scale: 1"=6'

TO APPLY:
 W'BD SERVICE RD. STA. 799+90 TO 410+85
 E'BD SERVICE RD. STA. 395+52.23 TO 426+14.80



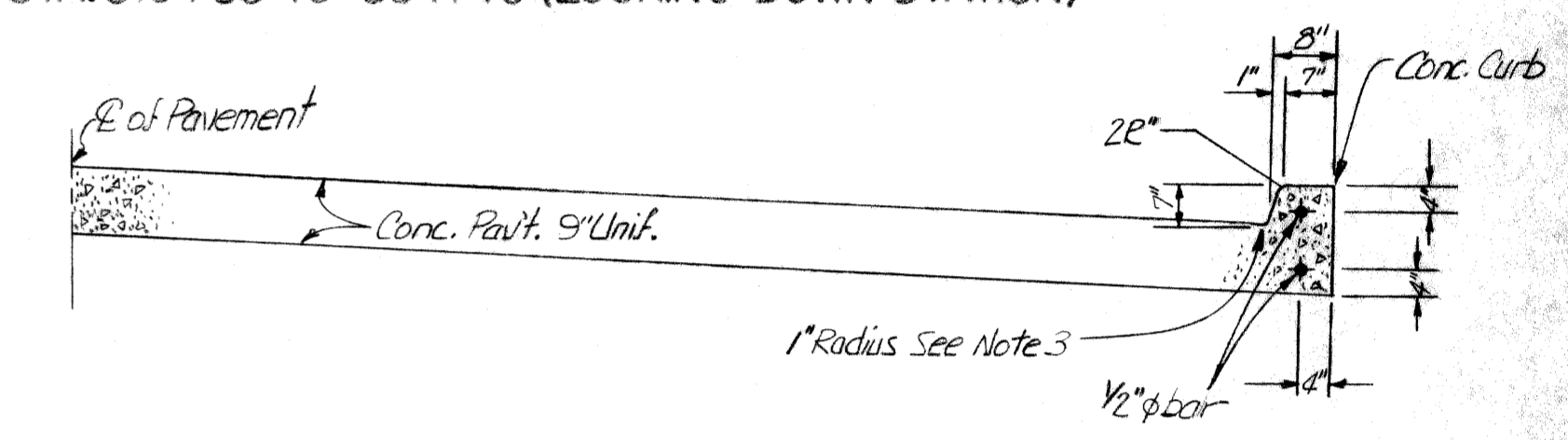
Scale: 1"=6'

TO APPLY:
 W'BD SERVICE RD. STA. 377+31.38 TO 382+70
 E'BD SERVICE RD. STA. 379+65 TO 384+40 (LOOKING DOWN STATION)

- NOTES:**
- Except as otherwise detailed on the plans all pavement sections shall have a crown drop derived from a modified parabolic curve (See Spec Details for crown chart)
 - All unsodded slopes shall be mulched at the rate of _____ tons per acre.
 - Class A Slopes will be required on this project.
 - Topsoil shall be stockpiled for use as topsoil surface. Any such material not required for topsoil surface shall be disposed of as directed by the Engineer.
 - Topsoil shall be stripped under fills 2.5' or less in height.

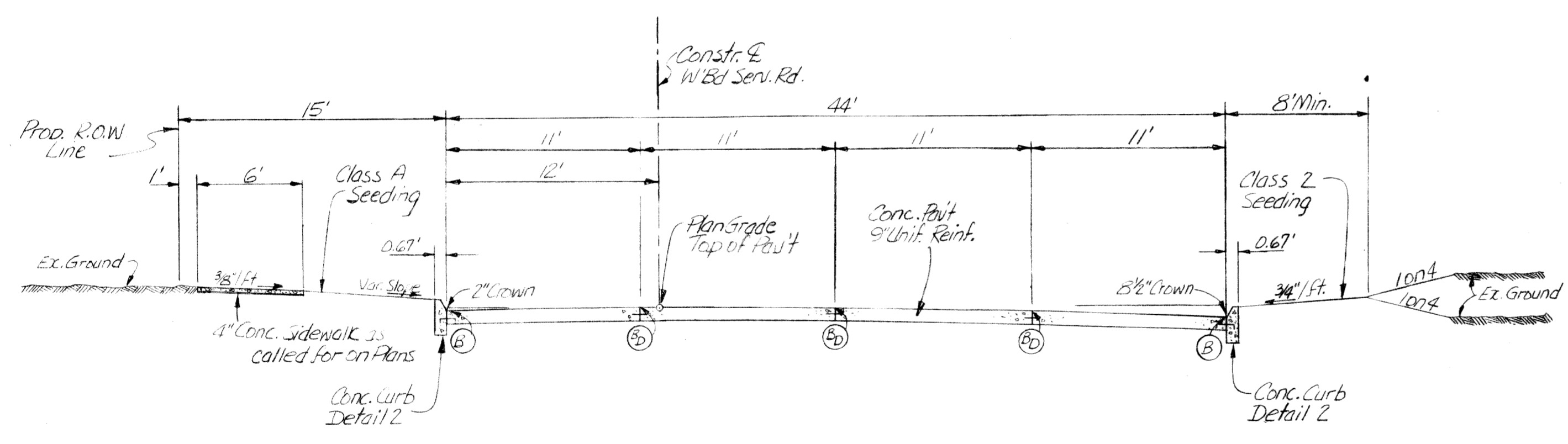
JOINT LEGEND FOR PAVEMENT JOINTS

- ⓐ Longitudinal Lane Tie Joint with Tie Bars, according to Standard Plan E-4-A-33, Detail 1.
- ⓑ Longitudinal Bullhead Construction Joint, according to Standard Plan E-4-A-33, Detail 2.
- ⓒ Optional B or D



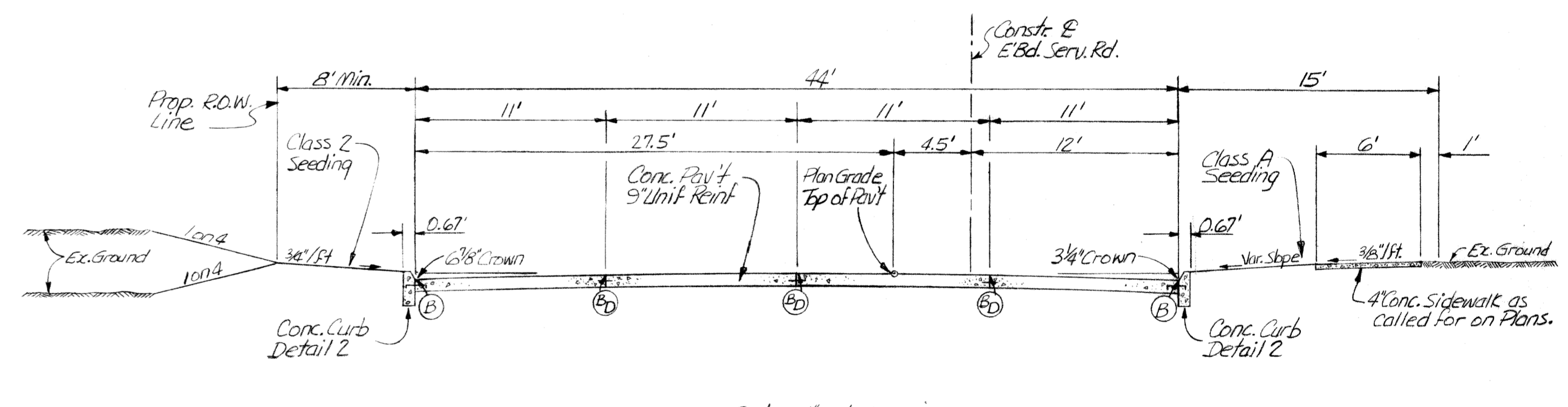
SECTION SHOWING INTEGRAL CURB (ALTERNATE)

- NOTES:**
- Regardless of the option selected by the contractor, the pay item shall remain the same as if a separate pavement and curb and gutter were constructed.
 - Standard pavement reinforcement may be substituted for the lower 1/2" bar. Pavement reinforcement for such shall be an incidental item.
 - If the curb is constructed integrally with the pavement, a 1' radius shall be provided between the curb and the pavement.



Scale: 1"=6'

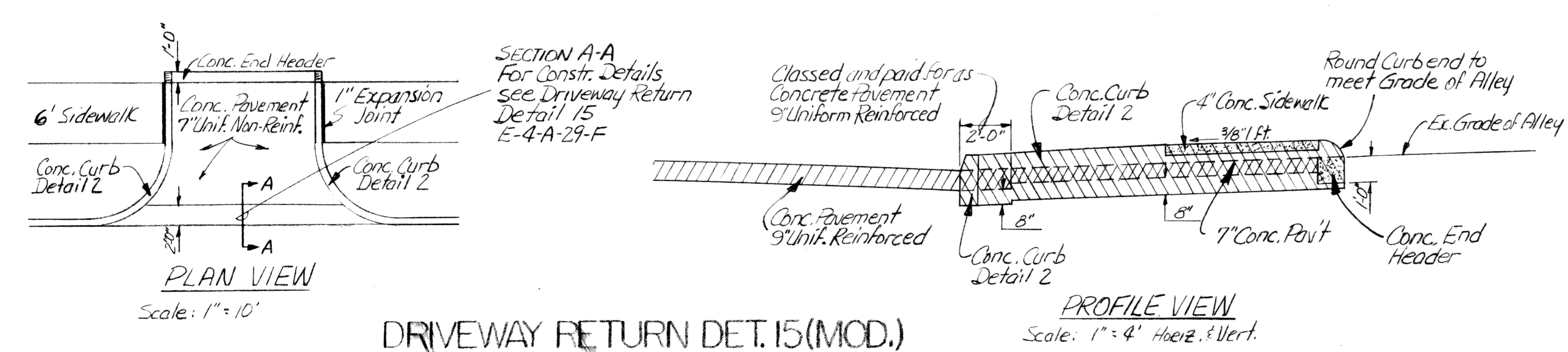
TO APPLY:
 WEST BD. STA. 384+85 TO 387+54.36



Scale: 1"=6'

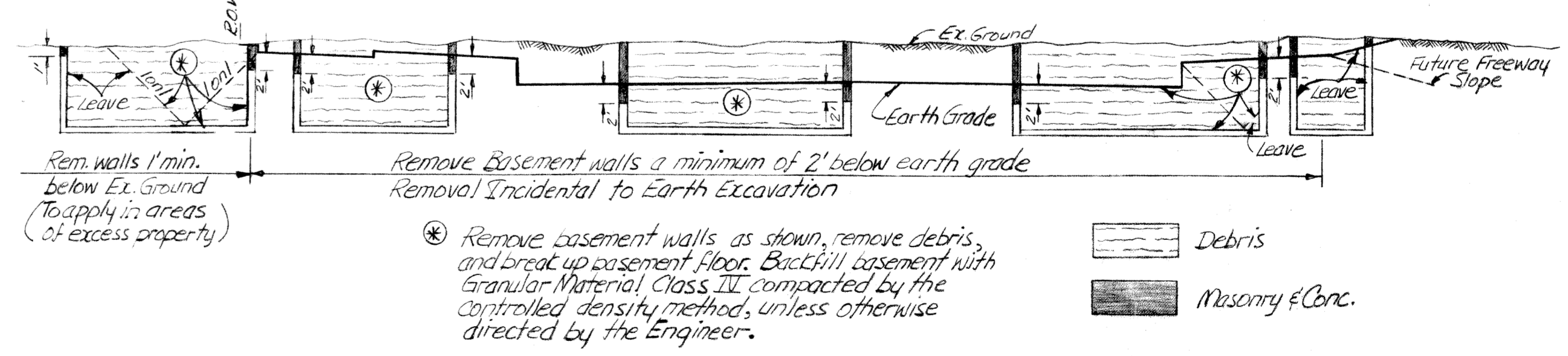
TO APPLY:
 EAST BD. STA 385+33 TO 387

FINISHED SECTIONS FOR SERVICE ROADS



DRIVEWAY RETURN DET. 15 (MOD.)

PROFILE VIEW
 Scale: 1"=4' Horiz. & Vert.



TREATMENT FOR BASEMENTS

SQUAD - R. L. ROUSH

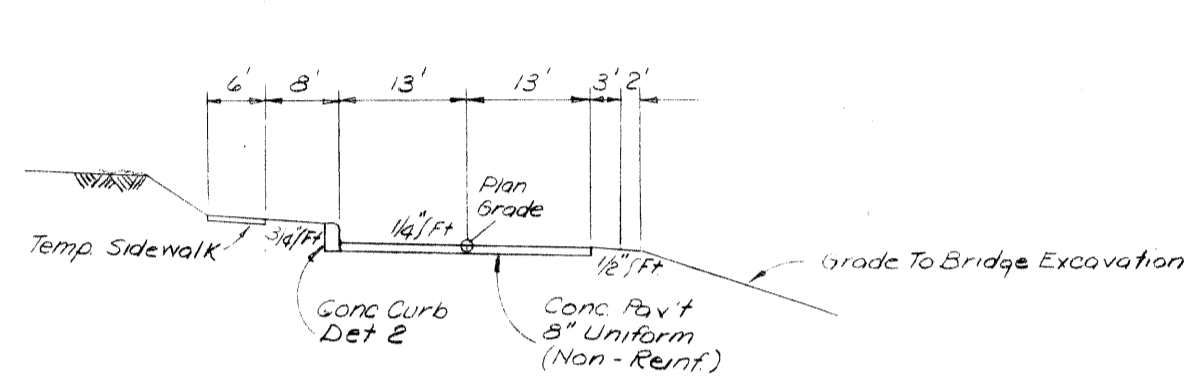
CONSTRUCTION PROCEDURE FOR MAINTAINING 2-WAY TRAFFIC ON MEYERS

- Construct intersections of E. & W. Bd Service Rds with Meyers part-width at a time.
1. Widen west side of Meyers with aggregate base course station 37+50 to 31+65 and 41+60 to 43+75 including tapers.
 2. Switch two-way traffic to west 2 lanes of existing Meyers.
 3. Construct east half of intersections of E. Bd & W. Bd Serv. Rds. station 38+15 to 38+65 and 42+60 to 43+25 respectively.
 4. Switch traffic to east 2 lanes of Meyers.
 5. Construct west half of intersections of E. & W. Bd Service Rds.
 6. Construct turnaround.
 7. Switch traffic to turnaround.
 8. Construct S-17 and finish approaches.

Quantities for Maintaining Traffic

Part-Width Construction - 2 Intersections
 Aggregate Base Course - 65 Tons
 Calcium Chloride - 0.3 Tons
 Water (100 Gal/Unit) - 0.8 Units
 Concrete Pavt 9" Unit (High Early Str) - 545 Sq.Ft.
 Barricades (Furnished & Installed) - Lin.Ft.
 Barricades (Relocate) - Lin.Ft.
 Barricades (Remove) - Lin.Ft.

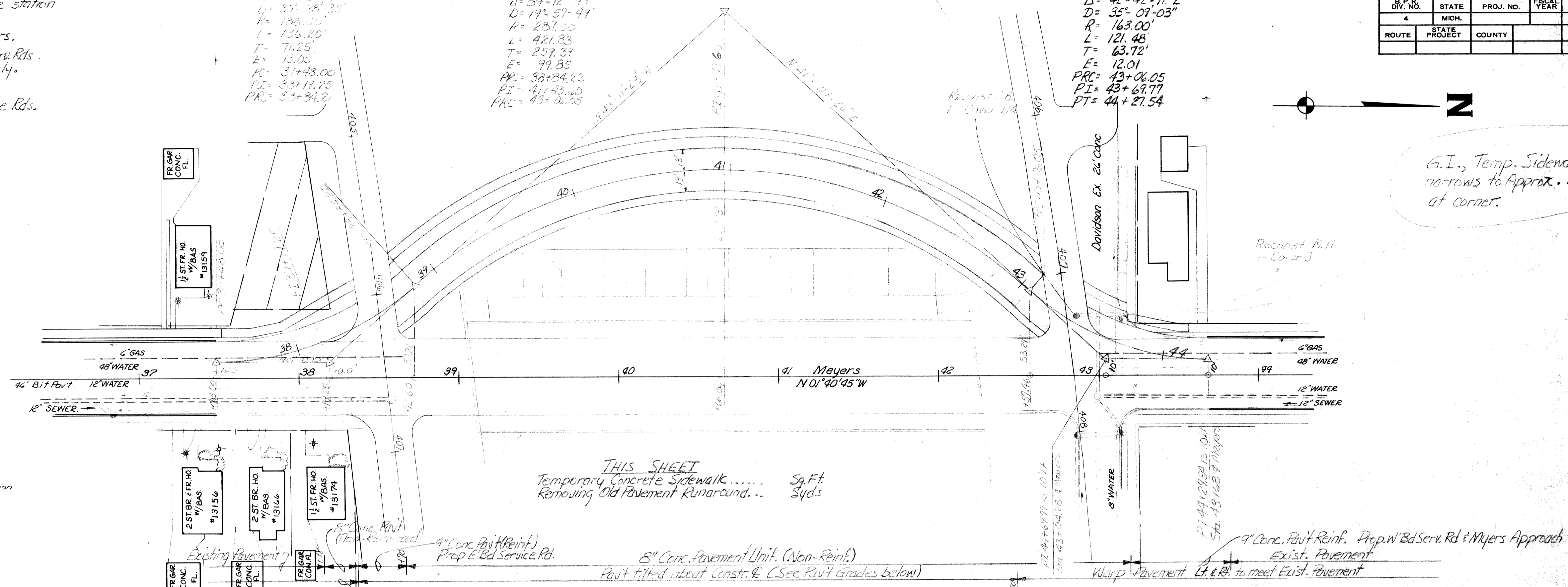
Typical Cross-Section for Turnaround



Curve Data
 A= 41° 30' 55"
 D= 35° 09' 03"
 R= 138.30'
 L= 136.20'
 T= 74.25'
 E= 13.05'
 PC= 37+43.00'
 PT= 33+17.25'
 PRC= 33+34.21'

Curve Data
 A= 84° 12' 49"
 D= 19° 57' 49"
 R= 237.00'
 L= 421.83'
 T= 259.39'
 E= 99.85'
 PC= 38+34.22'
 PT= 41+43.40'
 PRC= 43+16.33'

Curve Data
 A= 42° 42' 11"
 D= 35° 09' 03"
 R= 163.00'
 L= 121.48'
 T= 63.72'
 E= 12.01'
 PC= 43+06.05'
 PT= 43+69.77'
 PRC= 44+27.54'



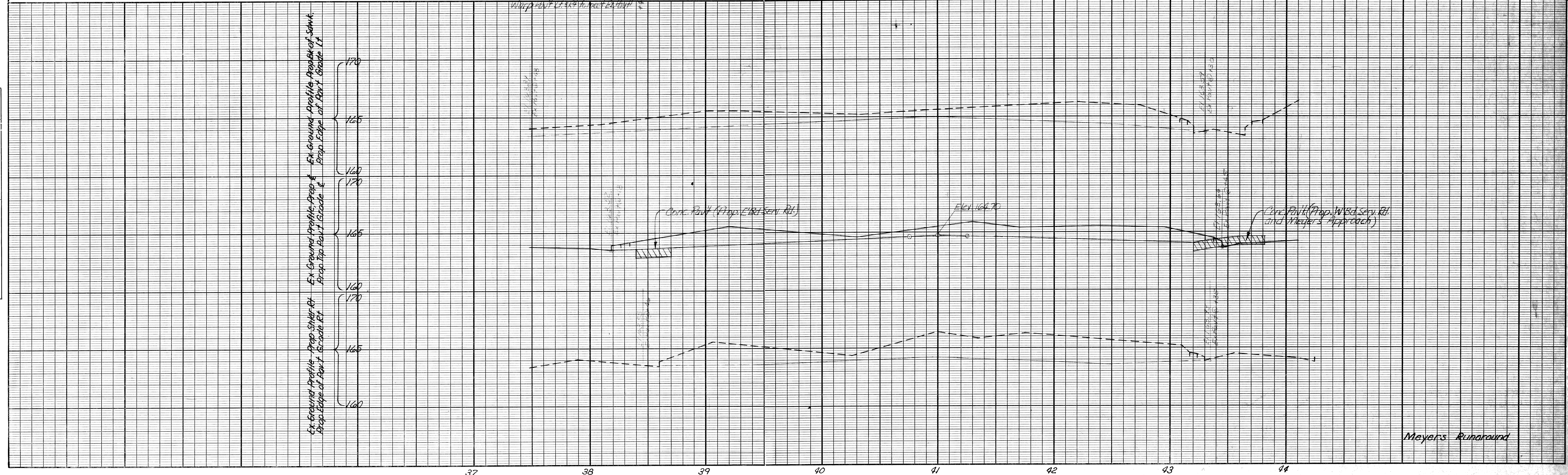
THIS SHEET
 Temporary Concrete Sidewalk Sq.Ft
 Removing Old Pavement Turnaround... Syds

G.I., Temp. Sidewalk narrows to Approx. 3' at corner.

OPERATION	DATE
PRELIMINARY CHECK	
FINAL DESIGN CHECKED	
FRASER	
QUANTITIES CHECKED	
BY	
DATE	

OPERATION	DATE
SUBMITTALS	
PLAN PLOTTED	
PROFILE PLOTTED	
PRELIMINARY GRADE	
GRADE INSPECTION	
FEDERAL INSPECTION	

Ex Ground Profile - Prop. S-17 Rt
 Prop. Edge of Pavt to Grade Rt
 Ex Ground Profile - Prop. E. Bd Serv. Rd
 Prop. Top Pavt to Grade L
 Ex Ground Profile - Prop. W. Bd Serv. Rd
 Prop. Edge of Pavt to Grade L



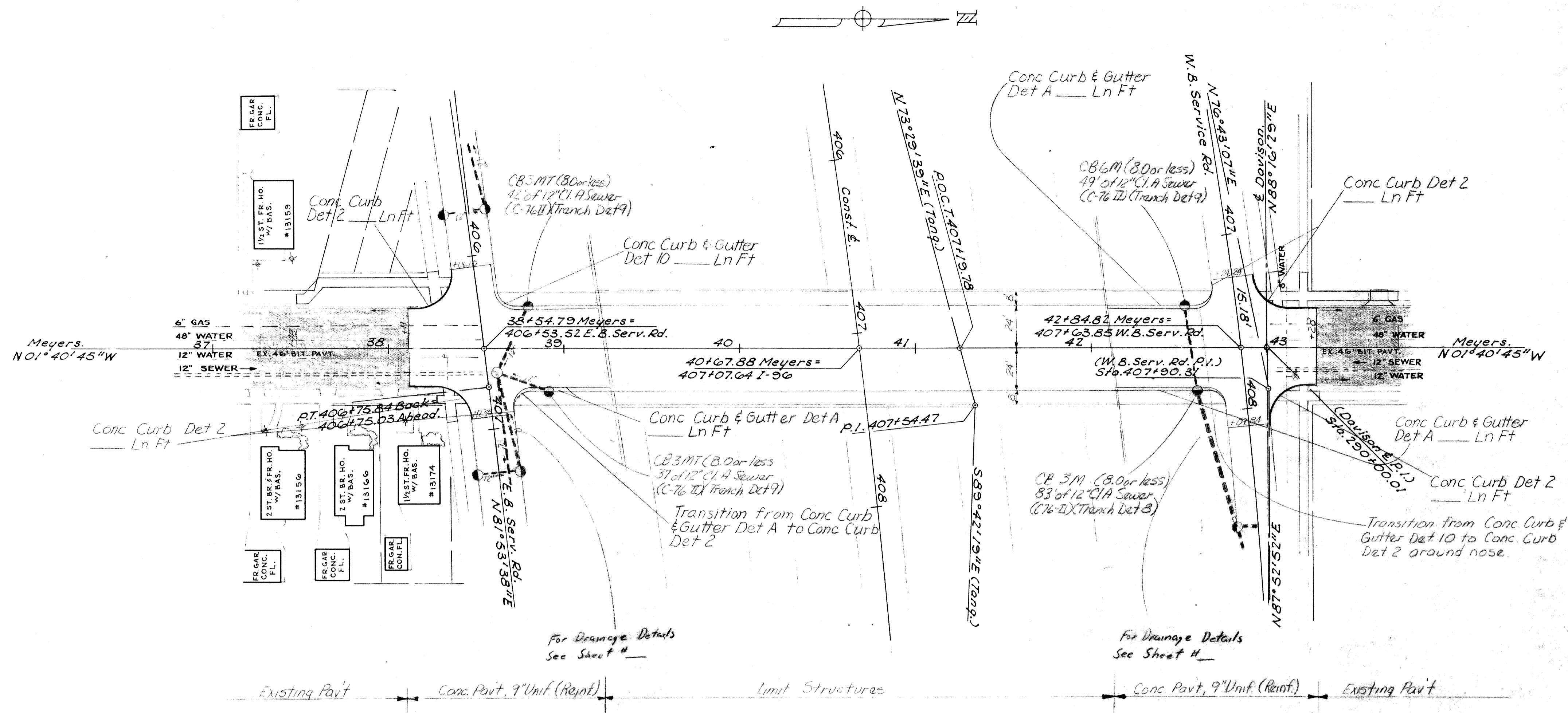
Meyers Turnaround

S0140 B & P.USH

REVISION	FINAL R.O.W.
DATE	
AUTH.	

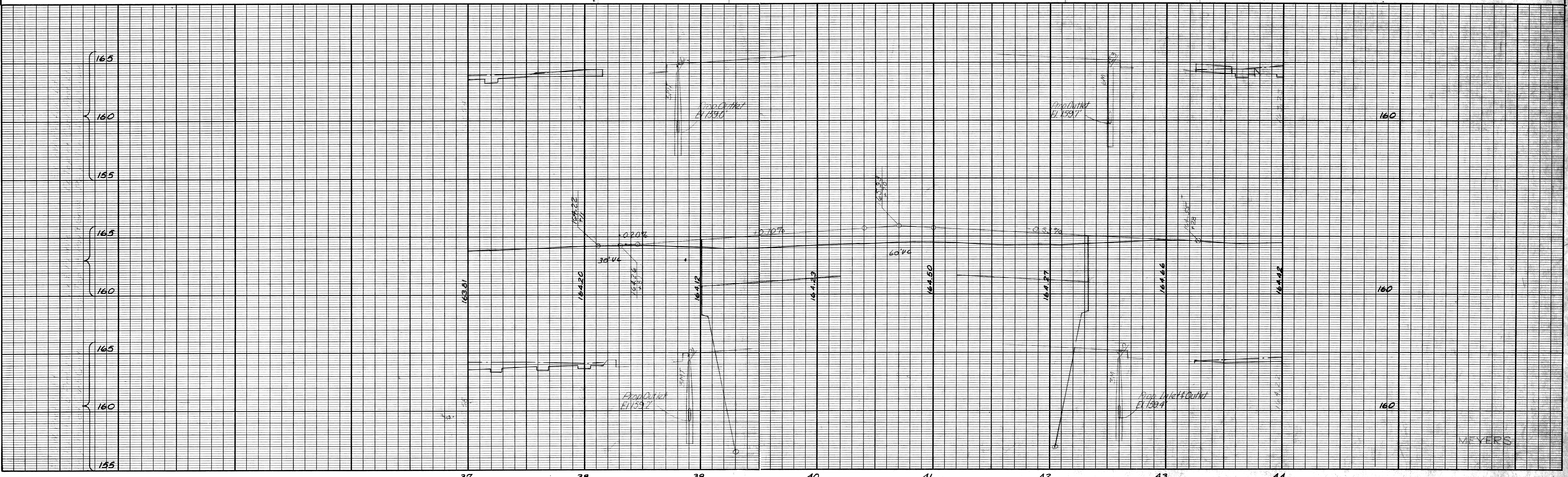
OPERATION	BY	DATE
PRELIMINARY P.O.W. CHECKED		
FINAL DESIGN CHECKED		
TRACED		
QUANTITIES CHECKED		
SQUAD		

S.P.R. DIV. NO.	STATE	PROJ. NO.	FISCAL YEAR	SHEET NO.	TOTAL SHEETS
4	MICH.			50	
ROUTE	STATE PROJECT	COUNTY		SHEET NO.	TOTAL SHEETS



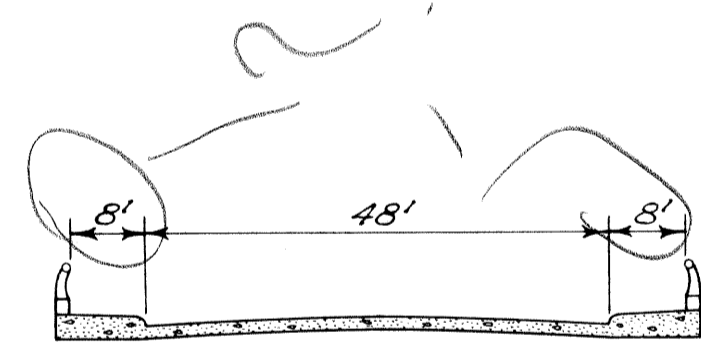
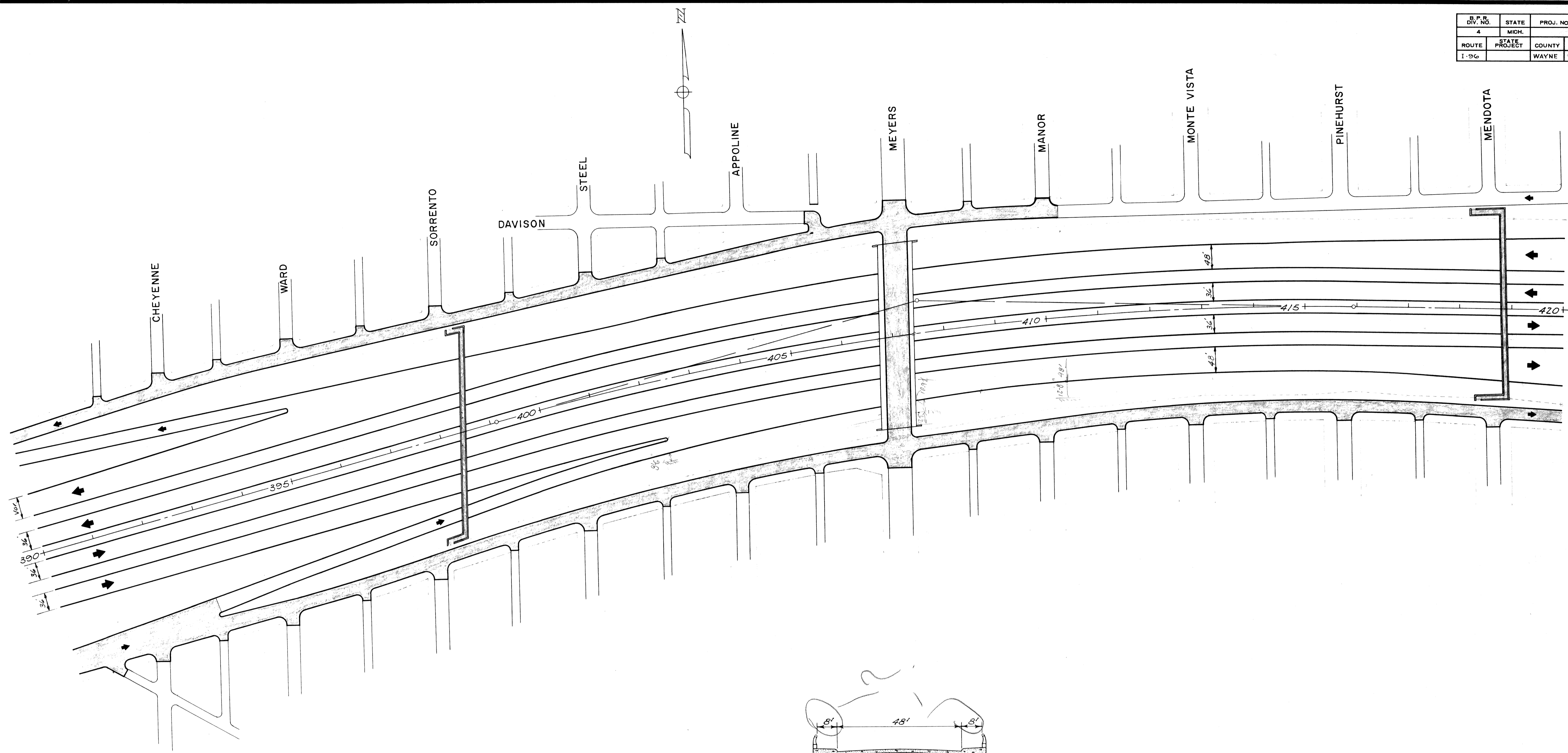
Station	Curbing Pattern	Box Placement	Conc. Sidewalk
43+65	Detail 11 Ln Ft	7 Unit (Reinf)	7 Unit 54 Ft

OPERATION	BY	DATE
SURVEYED		
PLAN CHECKED		
PROFILE PLOTTED		
PROFILE CHECKED		
GRADE INSPECTION		
FEDERAL INSPECTION		

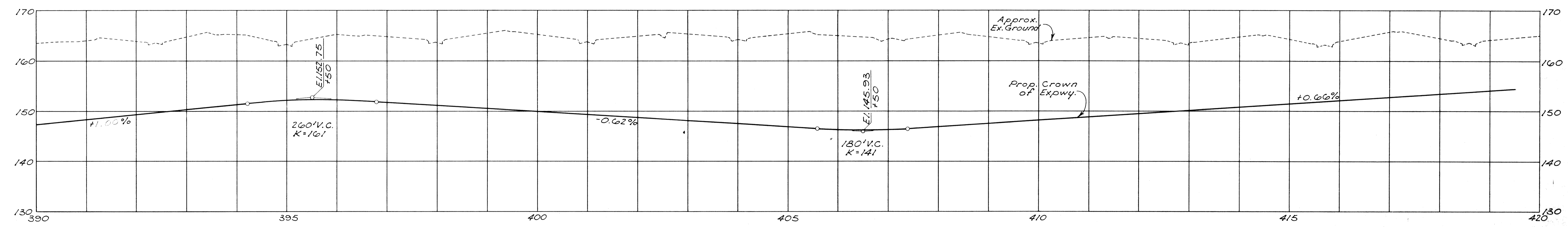


SQUAD P. E. ROUGH

S.P.R. DIV. NO.	STATE	PROJ. NO.	FISCAL YEAR	SHEET NO.	TOTAL SHEETS
4	MICH.			6	
ROUTE	STATE PROJECT	COUNTY	CITY	SHEET NO.	TOTAL SHEETS
I-96		WAYNE	DETROIT		



MEYERS

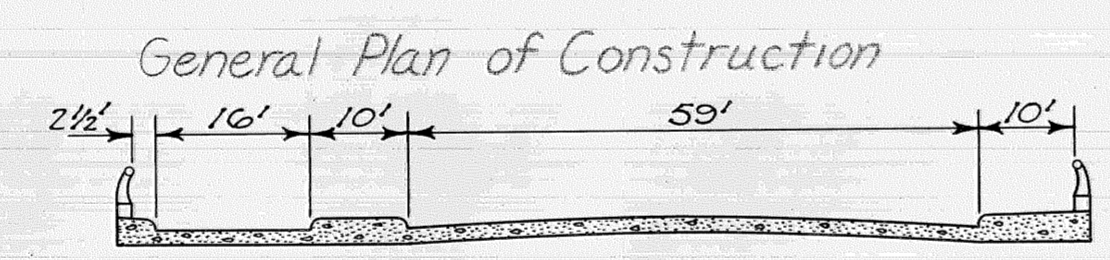
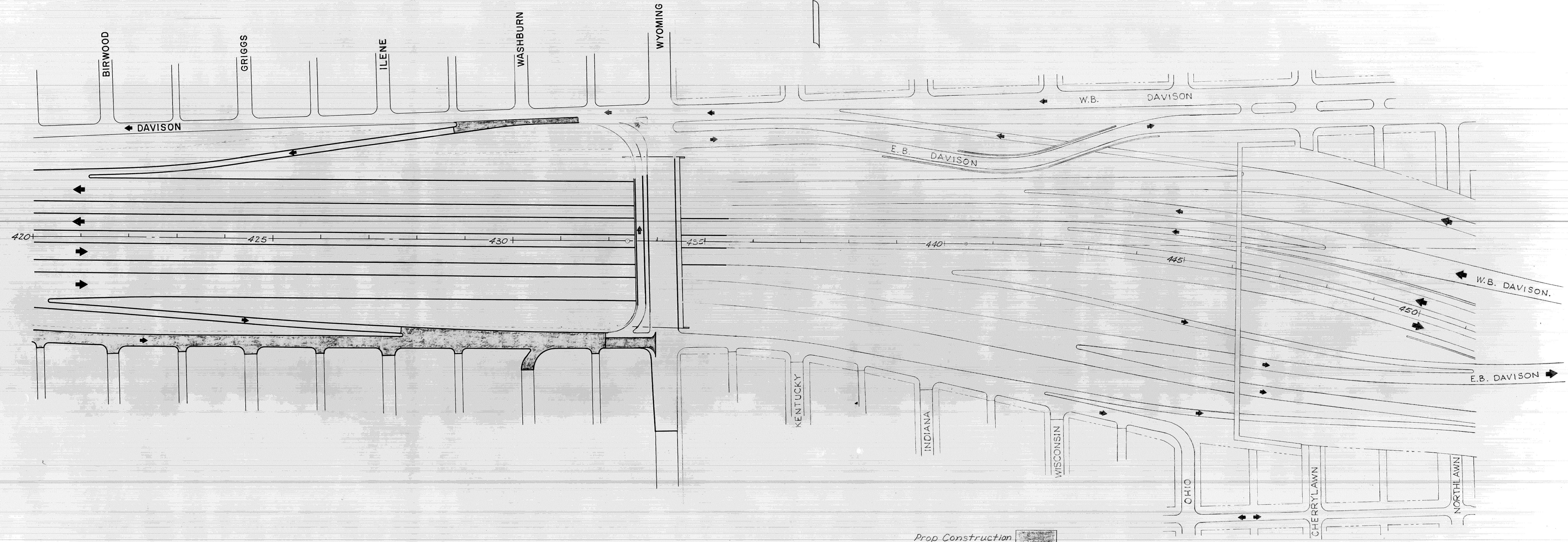


SQUAD - R. E. ROUSH

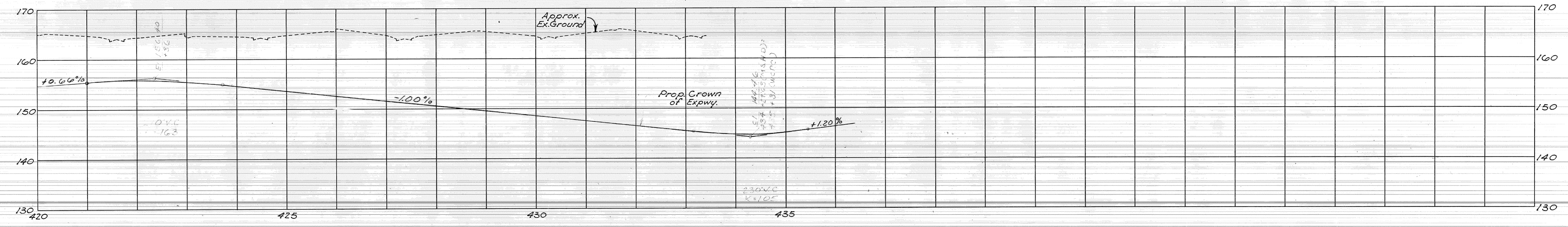
STA. EQUATION
M.S.H.D. STA. 432 + 35.51 BACK +
W.C.R.C. STA. 433 + 39.88 AHEAD.
LINE SHORTENS 101.37'



R.P. NO.	STATE	PROJ. NO.	FISCAL YEAR	SHEET NO.	TOTAL SHEETS
4	MICH.			7	
ROUTE	STATE PROJECT	COUNTY	CITY	SHEET NO.	TOTAL SHEETS
I-96		WAYNE	DETROIT		



WYOMING
 Mich. Proj. I-UI-96-4 () Part I Ends
 Opposite Sta 433+00 Constr. of I-96
 STATE PROJECT I 82123 E & F



(F&G)

Road Squad - Eoush
 50' 40' E. R. 13.54

B.P.R. DIV. NO.	STATE	PROJ. NO.	FISCAL YEAR	SHEET NO.	TOTAL SHEETS
4	MICH.			55	
ROUTE	STATE PROJECT	COUNTY		SHEET NO.	TOTAL SHEETS
B.P.R. DIV. NO.	STATE	PROJ. NO.	FISCAL YEAR	SHEET NO.	TOTAL SHEETS
4	MICH.			55	
ROUTE	STATE PROJECT	COUNTY		SHEET NO.	TOTAL SHEETS



Sewers Checked by RJ 8-29-68
 Utilities Checked by RJ 8-29-68

GENERAL UTILITIES
 STA. 400 TO STA. 410

FILE NO. 82123 E F	STATE PROJECT 82123	FEDERAL PROJECT	SHEET NO. 55
-----------------------	------------------------	-----------------	-----------------

