

* Taken from design drawings verify in field

C.C. Adams (16)

NO.	DESCRIPTION	DATE	BY

MICHIGAN STATE HIGHWAY DEPARTMENT

LEWIS FREEWAY
 CROSSING THE FORD FREEWAY IN DETROIT

CITY OF DETROIT

GENERAL PLAN OF STRUCTURE

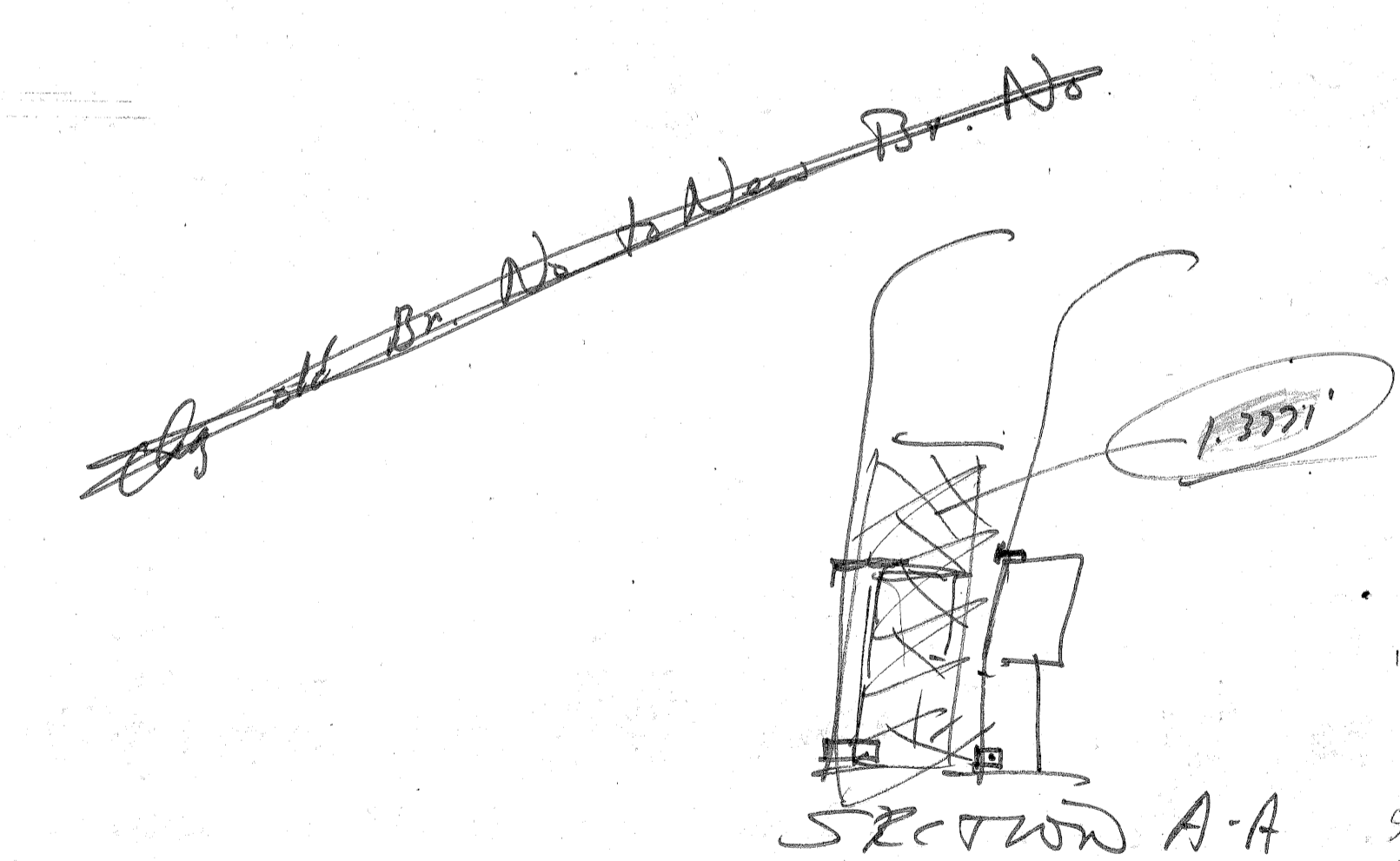
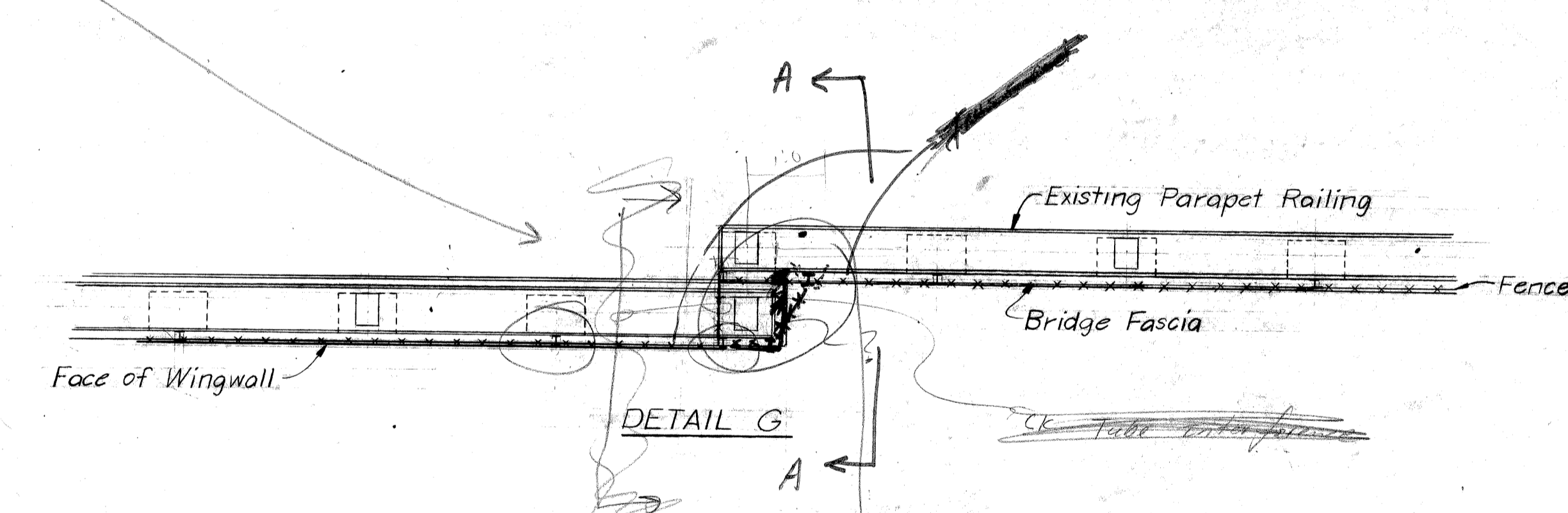
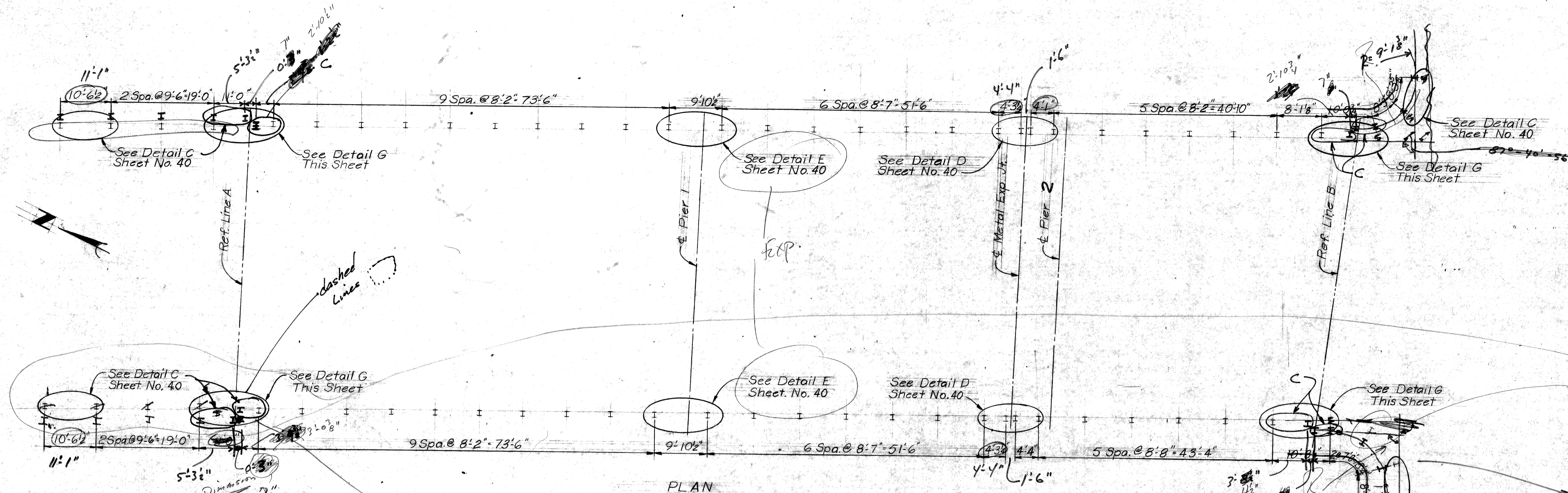
APPROVED: _____ DESIGN SUPERVISING ENGINEER

APPROVED: _____ ENGINEER OF DESIGN - CONSULTANTS

SQUAD BOSS	STYAN	3-66
DRAWN BY	K.V.H.	2-66
CHECKED BY	STYAN	2-66
SHEET		9 of 40

S15 of 82023A

246-6354
251-771



120' Chain Link Fence and Framing (52) Lin. Ft. Estimated

MICHIGAN DEPARTMENT OF STATE HIGHWAYS
TWENTY-FOURTH STREET OVER EDESEL FORD FREEWAY

PLANS PREPARED BY
CITY OF DETROIT
DEPARTMENT OF PUBLIC WORKS
CITY ENGINEERS OFFICE

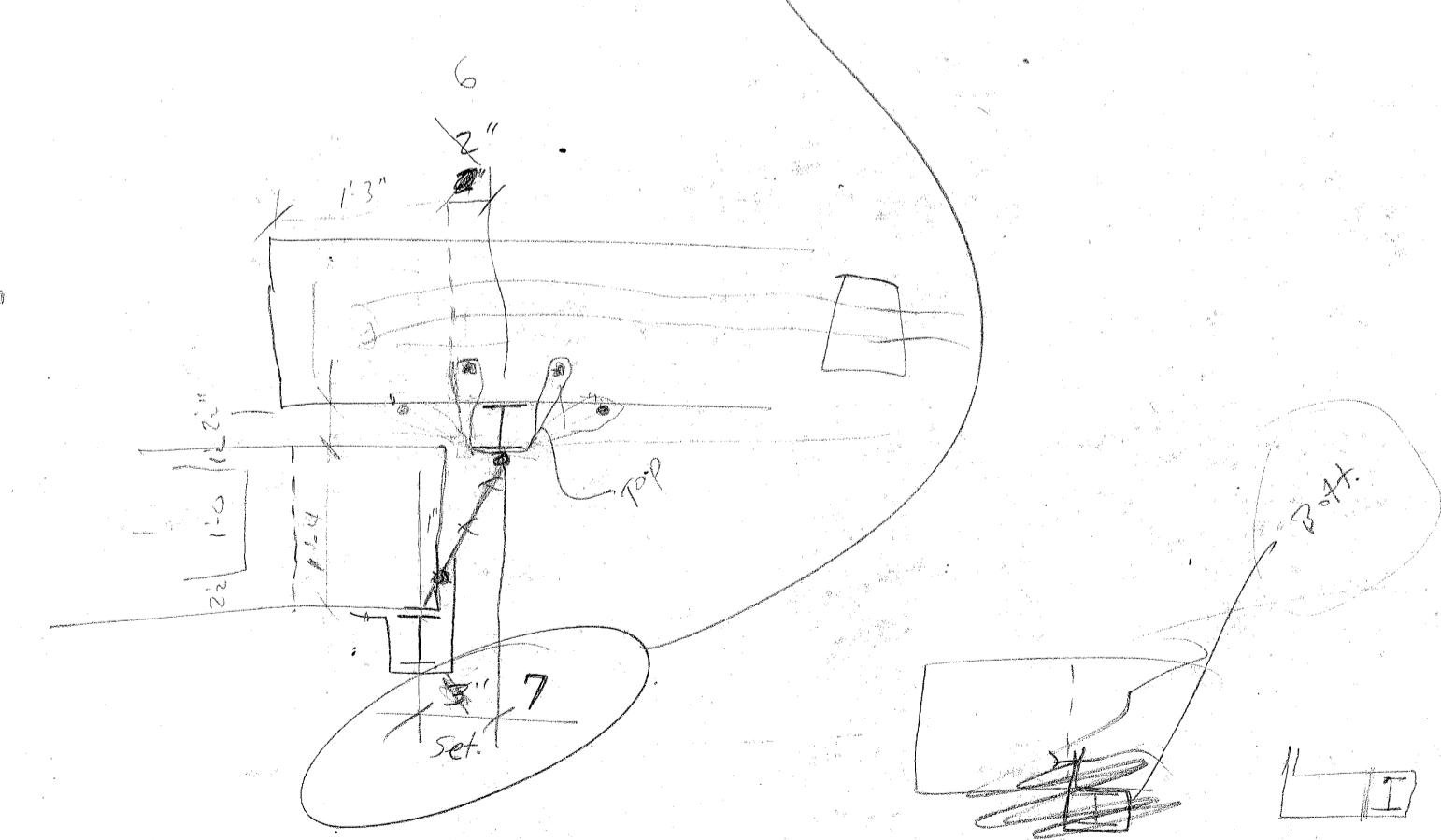
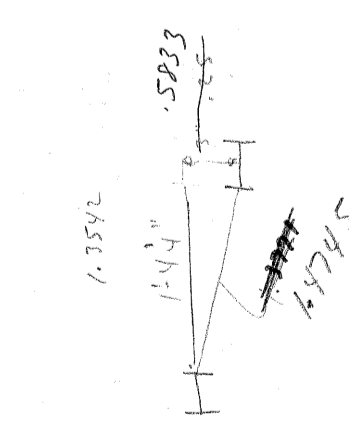
REVISIONS			
NO.	DESCRIPTION	DATE	BY

SQUAD BOSS	
DRAWN BY	L.G. 4-73
TRACED BY	
CHECKED BY	
SHEET 10 OF 40	
S15 of 82023	

JOB No.
05166-11

APPROVED _____
STRUCTURAL ENGINEER

I
I
I
I
I



$$\begin{aligned}
 &506.0833 \\
 &- 1.3332 \\
 &504.7501 \\
 &+ 1.7245(4) = 6.8979 \\
 &511.65
 \end{aligned}$$