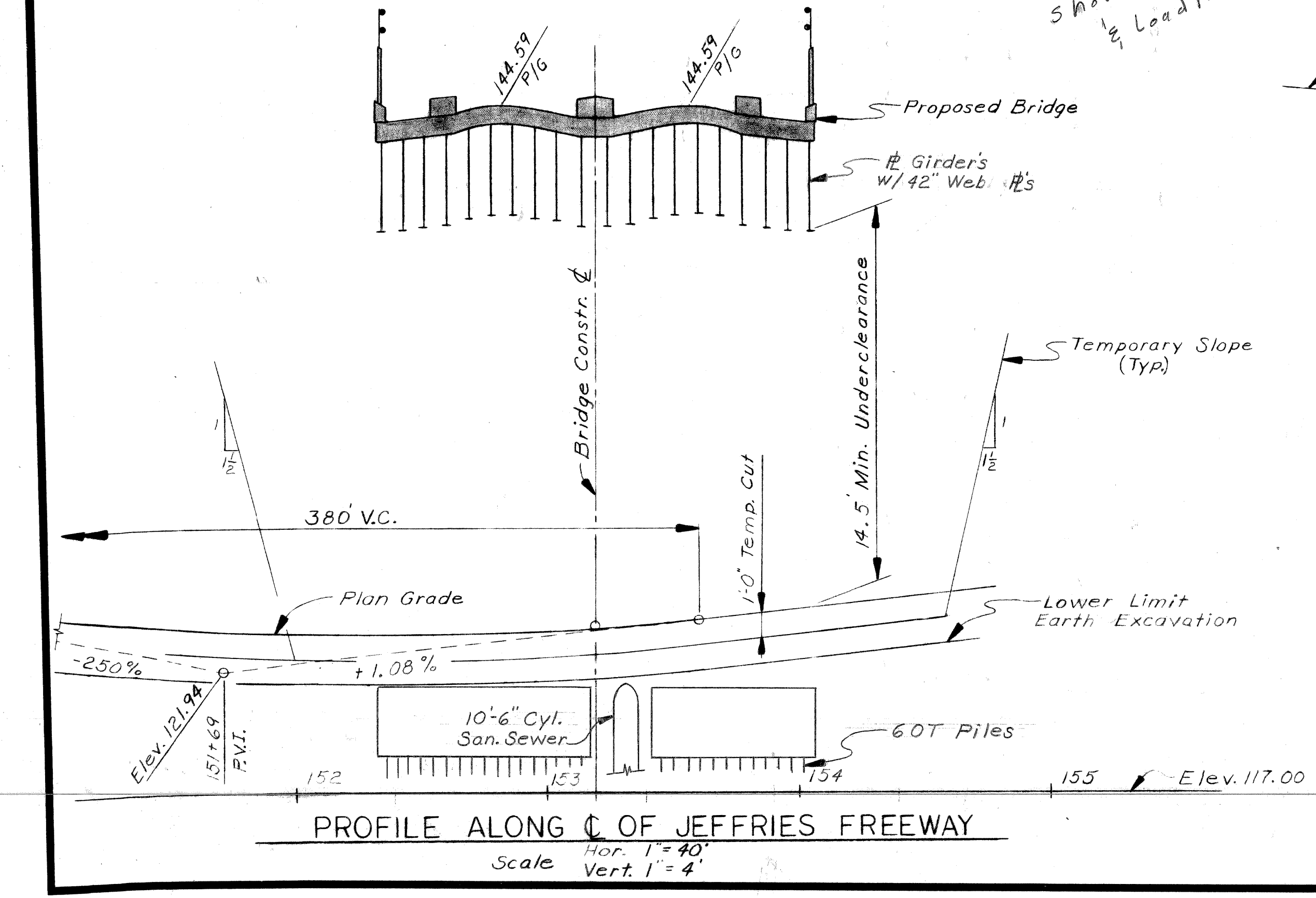
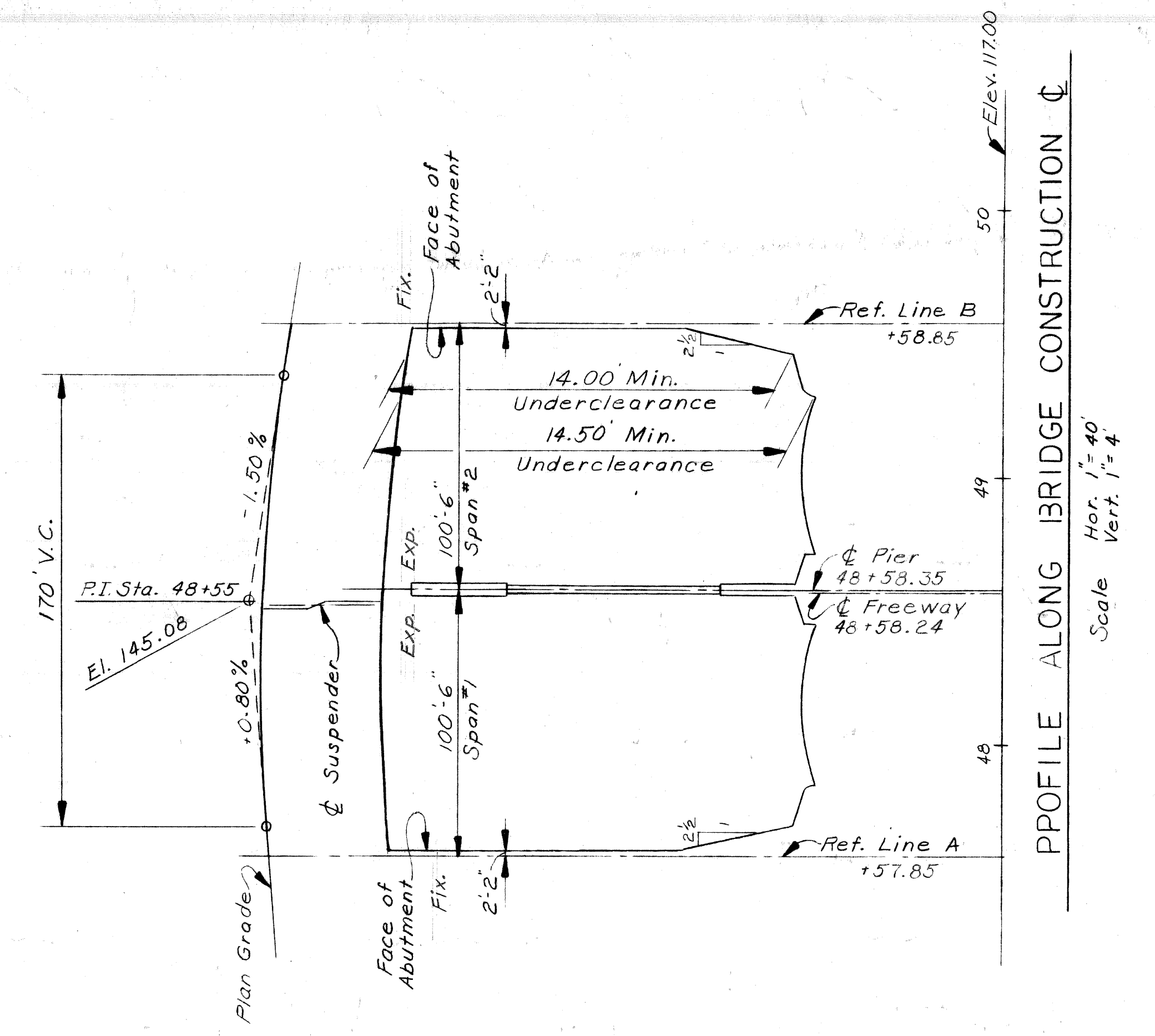
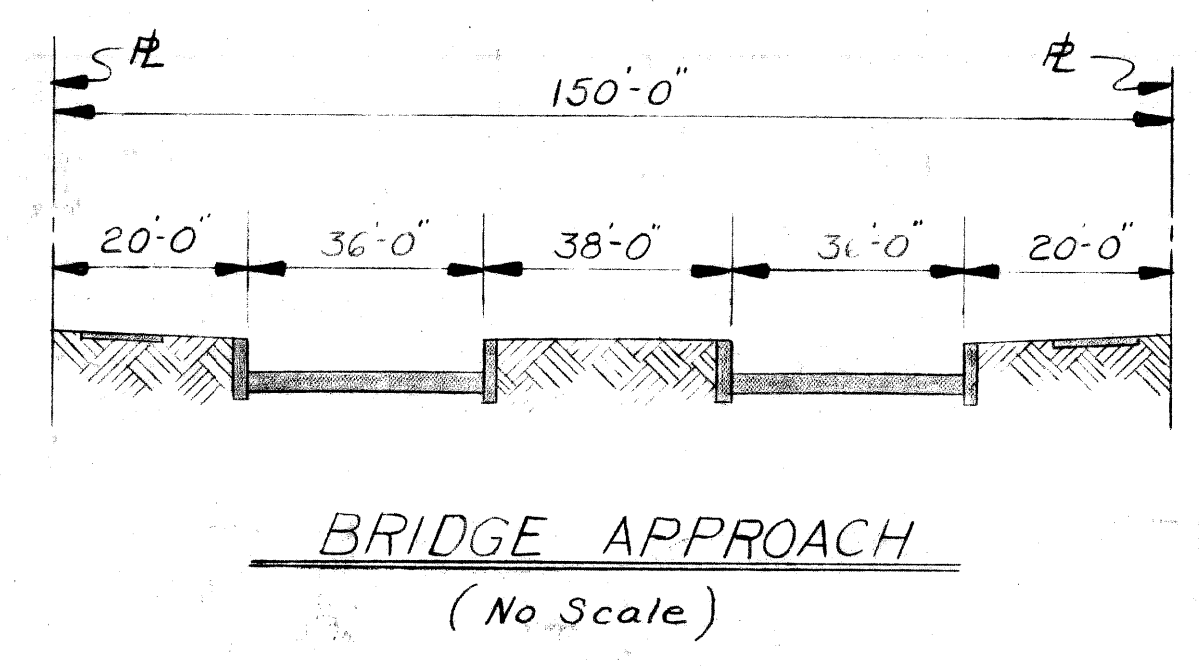


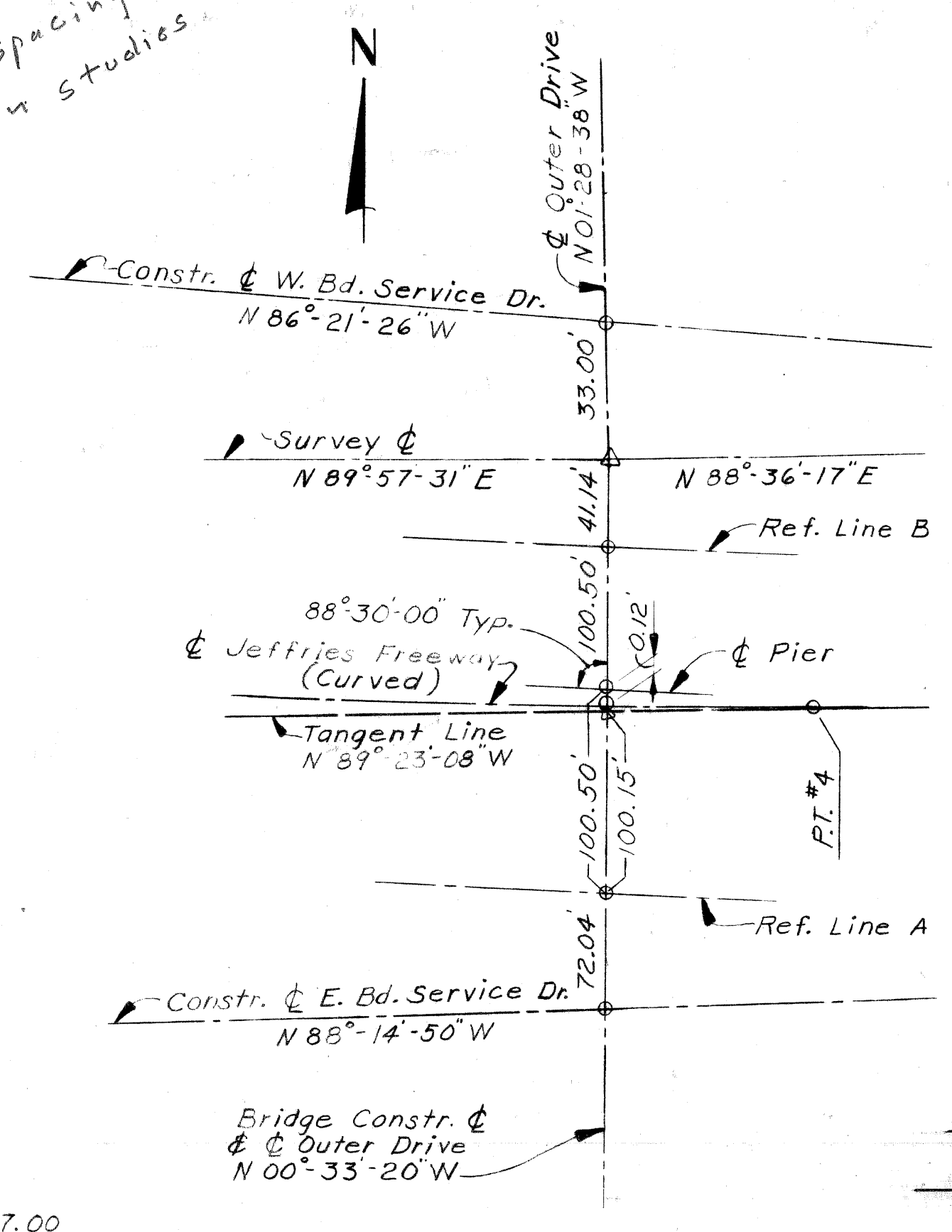
CURVE DATA
JEFFRIES FREEWAY

CURVE #4

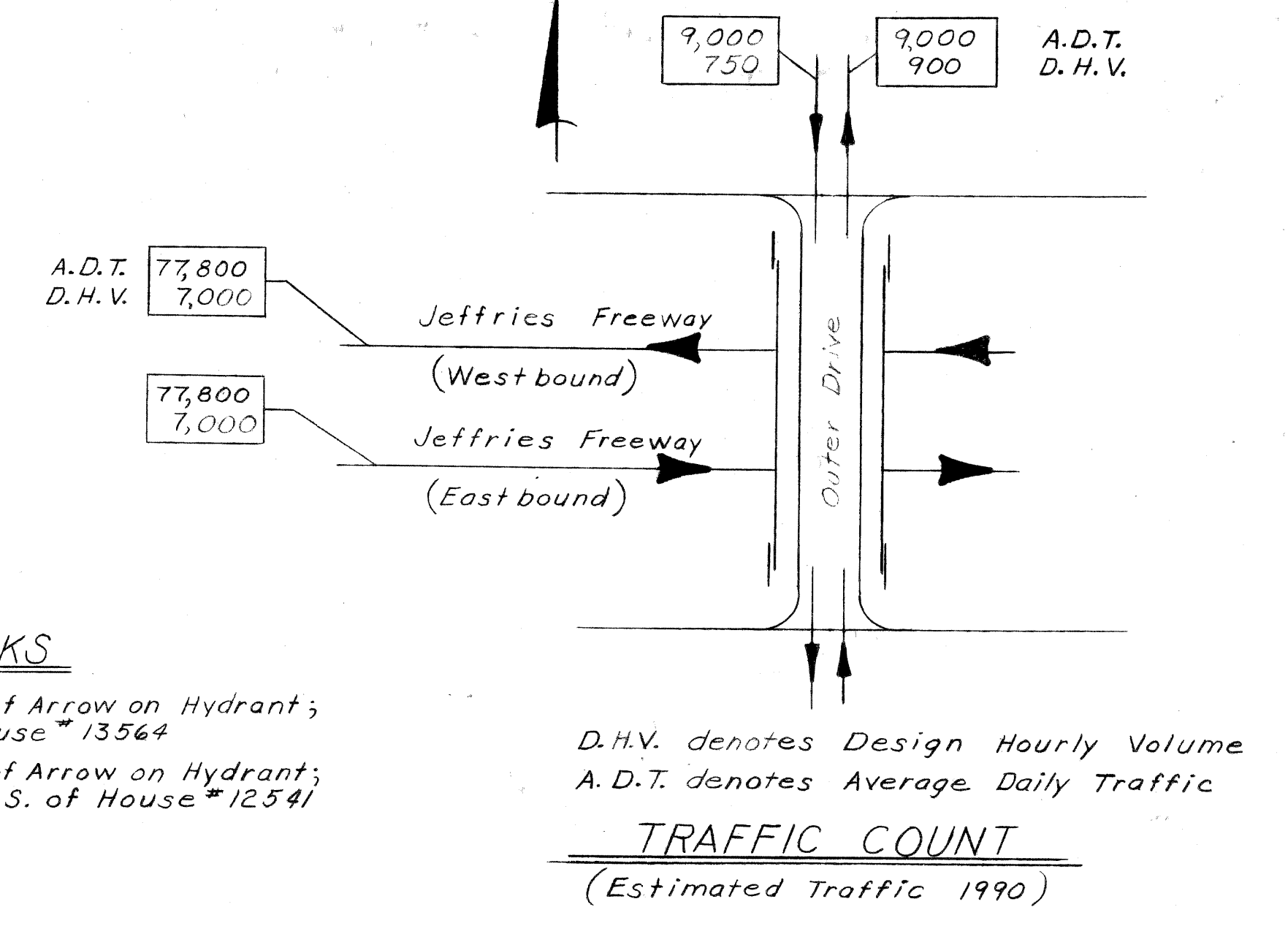
Δ = 2° 24' 09" Lt.
 D = 0° 24' 00"
 R = 14,323.94
 T = 300.36
 L = 600.63
 E = 3.15
 P.C. = 48+01.35
 P.I. = 51+01.71
 P.T. = 54+01.98



Show Girder Spacing & Loading on Studies



STUDY A
MAY 5, 1969



BENCH MARKS

B.M. #17A - Elev. 147.43 Tip of Arrow on Hydrant; E. Rockdale; House #13564
 B.M. #18A - Elev. 147.75 Tip of Arrow on Hydrant; E. Outer Drive; S. of House #12541

PLANS PREPARED BY
CITY OF DETROIT
DEPARTMENT OF PUBLIC WORKS
CITY ENGINEER'S OFFICE
BUREAU OF HIGHWAYS AND EXPRESSWAYS

APPROVED: _____
STRUCTURAL ENGINEER

JOB NO.
PW 990 (14)

NO.	DESCRIPTION	DATE	BY

MICHIGAN DEPARTMENT OF STATE HIGHWAYS

OUTER DRIVE OVER
THE JEFFRIES FREEWAY IN DETROIT

GENERAL DRAWING

APPROVED: _____
DESIGN SUPERVISING ENGINEER

APPROVED: _____
DESIGN ENGINEER

OFFICE OF RECORDS
SQUAD BOSS: *Watts* 5/69
DRAWN BY: *Watts*
TRACED BY: *Estik* 5/69
CHECKED BY: _____
SHEET 1 OF 1

S21 of 82122 J