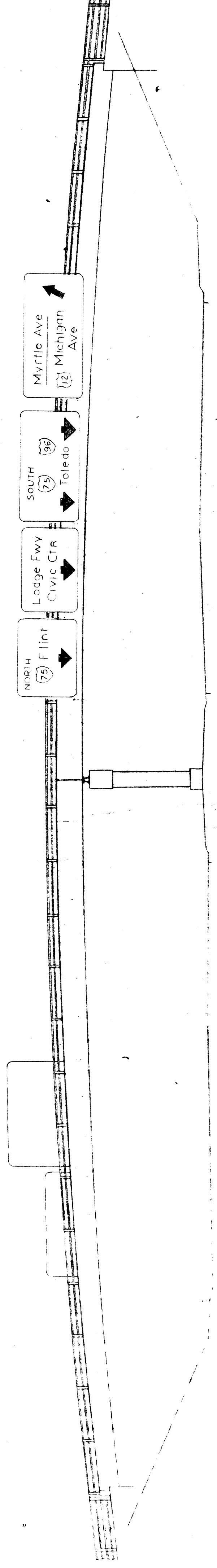


ELEVATION LOOKING NORTH



ELEVATION LOOKING SOUTH

27000  
 POLY BRIDGE  
 STUDY - 5/8/57  
 4/8/57  
 3 1/2" = 1'-0"

STATE	PROJ. NO.	SHEET NO.	TOTAL SHEETS
MICH.			
COUNTY			
ROUTE			
4			

STATE	PROJ. NO.	SHEET NO.	TOTAL SHEETS
MICH.			
COUNTY			
ROUTE			
4			

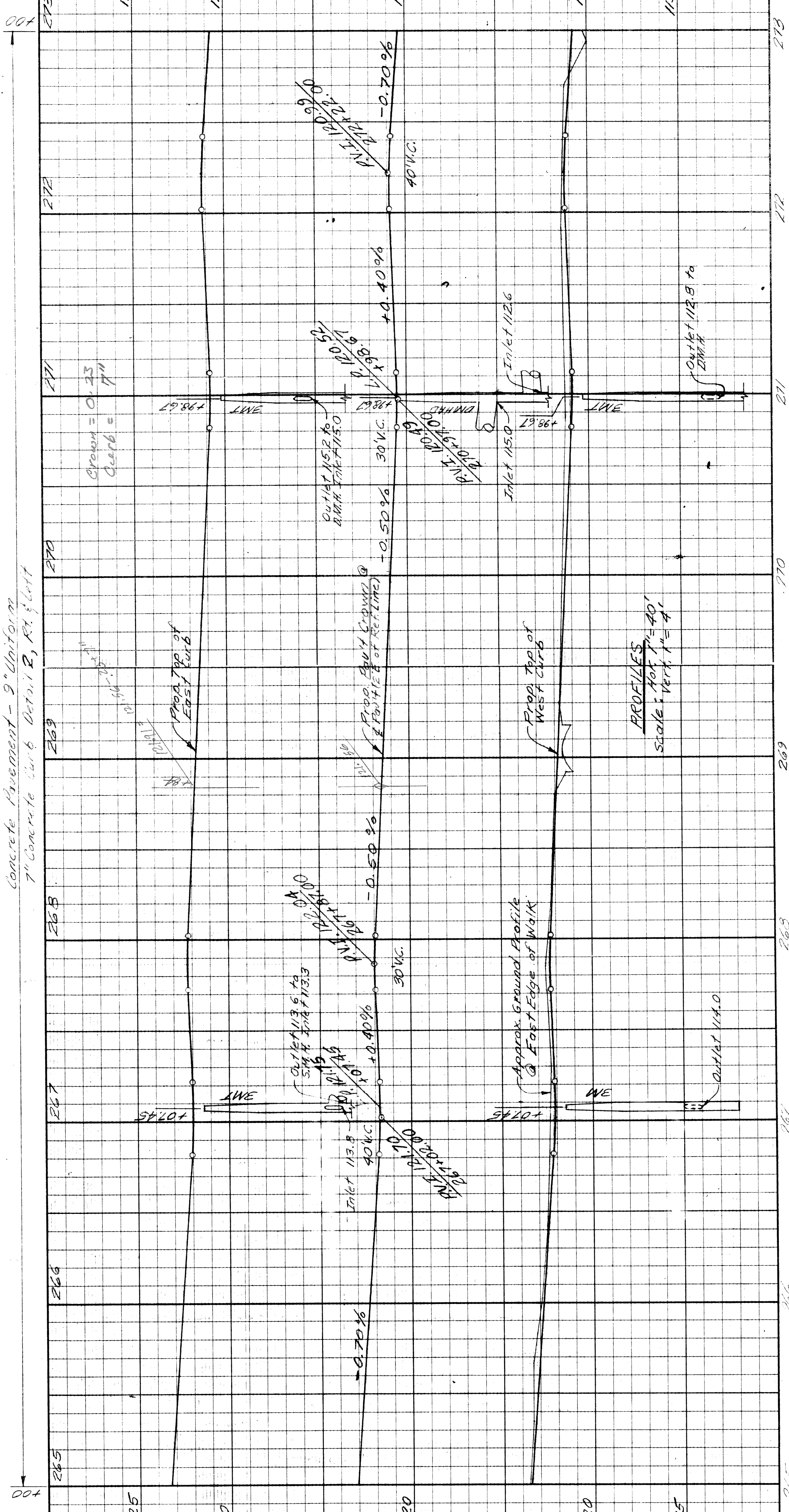
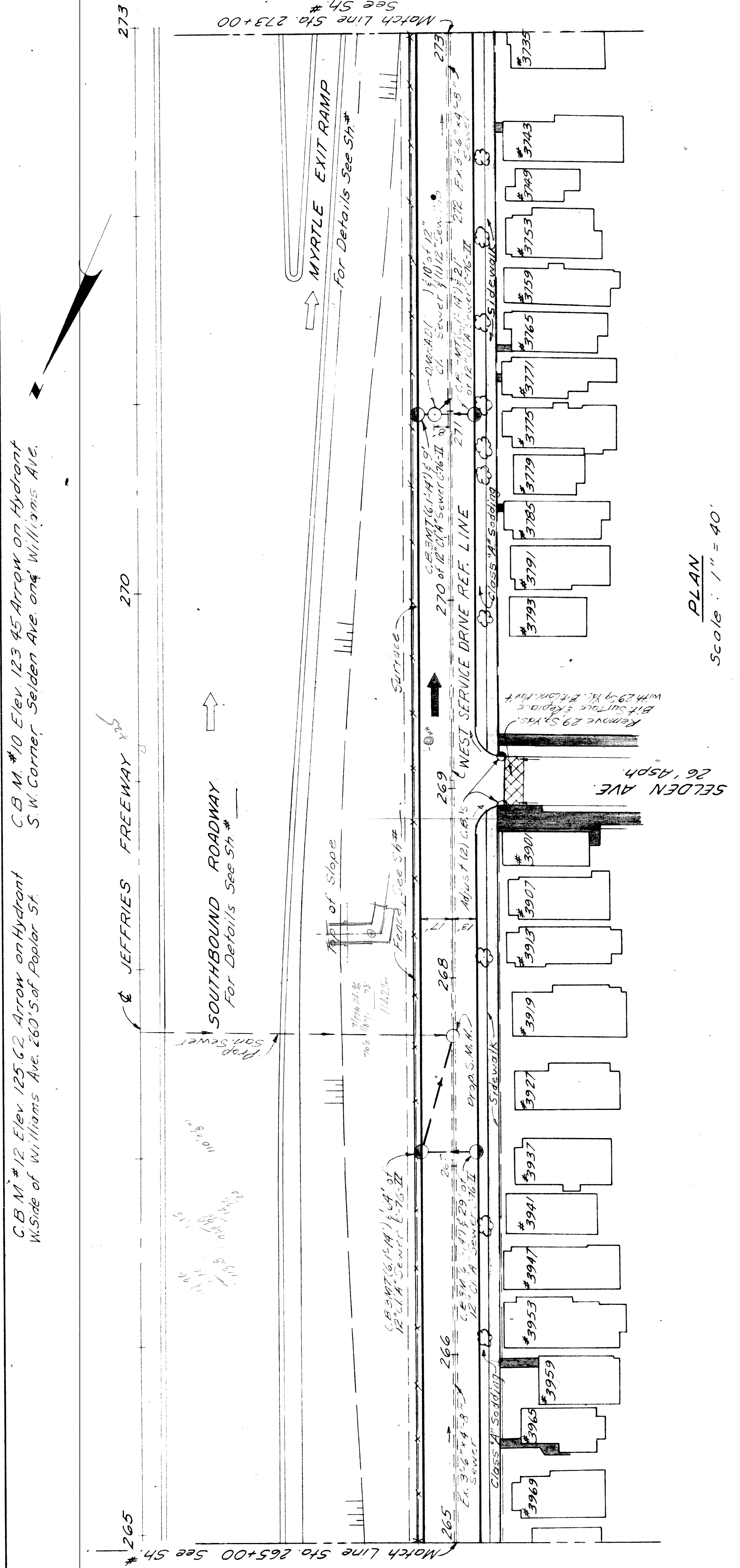
ALL WORK THIS SHEET  
CONTROL SECTION B2124A

Utility Trenches on this sheet shall be  
Trench Details unless otherwise noted.

QUANTITIES THIS SHEET

NOTES:

- For Alignment See Sh. #
- Existing Sidewalk to Remain
- Guard Rail See Sh. #
- As Shown, Adjust to provide for a smooth connection and to adjust crown. Replace with B.T. Cont. Pav't.



PLAN AND PROFILES  
FOR WEST SERVICE DRIVE  
STA. 265+00 TO STA. 273+00

FILE NO.	SHEET NO.
45-280	45

AUTH.	DATE	REVISION	FINAL R.O.W.

OPERATION	BY	DATE
PRELIMINARY R.O.W. CHECKED		
FINAL DESIGN CHECKED		
FRASCO		
FINAL R.O.W. CHECK		
QUANTITIES CHECKED		
SQUAD		

OPERATION	BY	DATE
SURVEYED		
PLAN PLOTTED		
PROFILES PLOTTED		
PROFILE CHECKED		
PRELIMINARY GRADE		
GRADE INSPECTION		
GENERAL INSPECTION		

AUTH.	DATE	REVISION	FINAL R.O.W.

C.B.M. #132147 125.65 Arrowwood Highway  
E. Side of Maybury Grand 200.5 of Poplar St.

C.B.M. #11147 256.1 Arrow on Hydrant  
N.E. Corner Selden Ave. and Maybury Grand

B.P.R. DIV. NO.	STATE	PROJ. NO.	SHEET NO.	TOTAL SHEETS
4	MICH.			

ROUTE	COUNTY	SHEET NO.	TOTAL SHEETS

B.P.R. DIV. NO.	STATE	PROJ. NO.	SHEET NO.	TOTAL SHEETS
4	MICH.			

ROUTE	COUNTY	SHEET NO.	TOTAL SHEETS

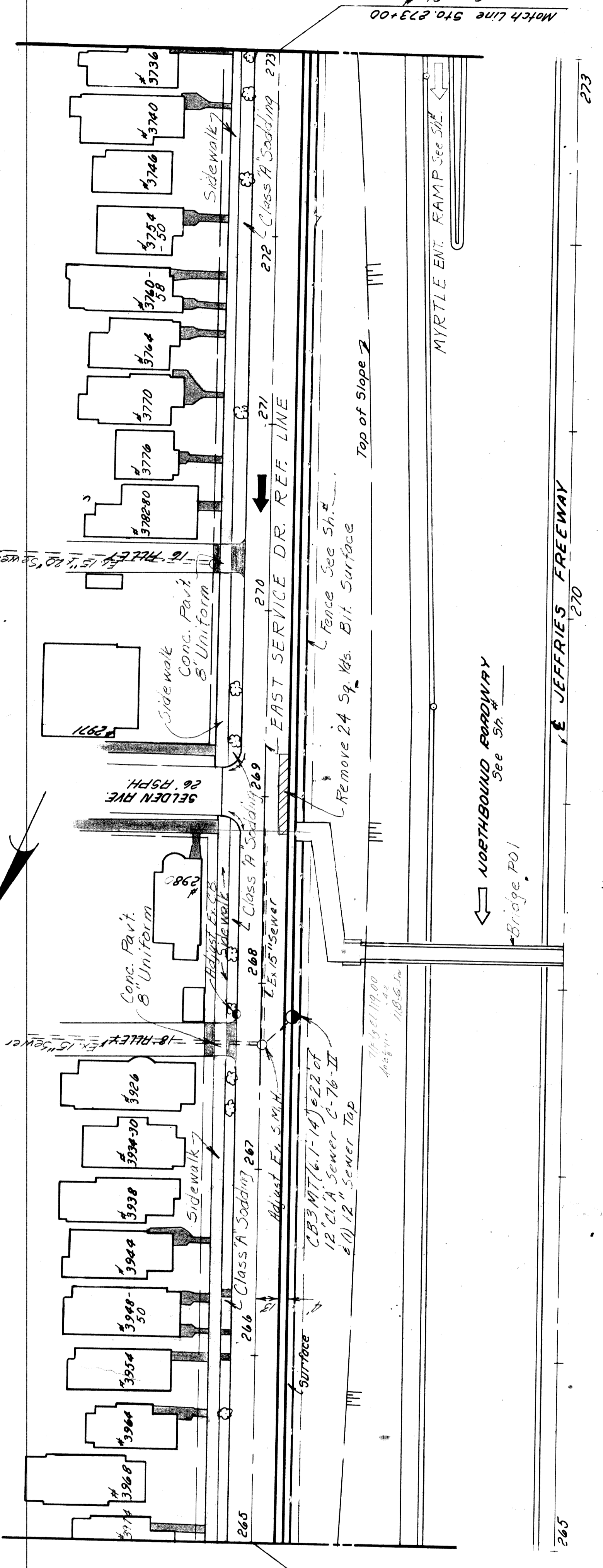
ALL WORK THIS SHEET CONTROL SECTION 821247

Utility Trenches on this Sheet shall be Trench Detail 9 Unless otherwise noted

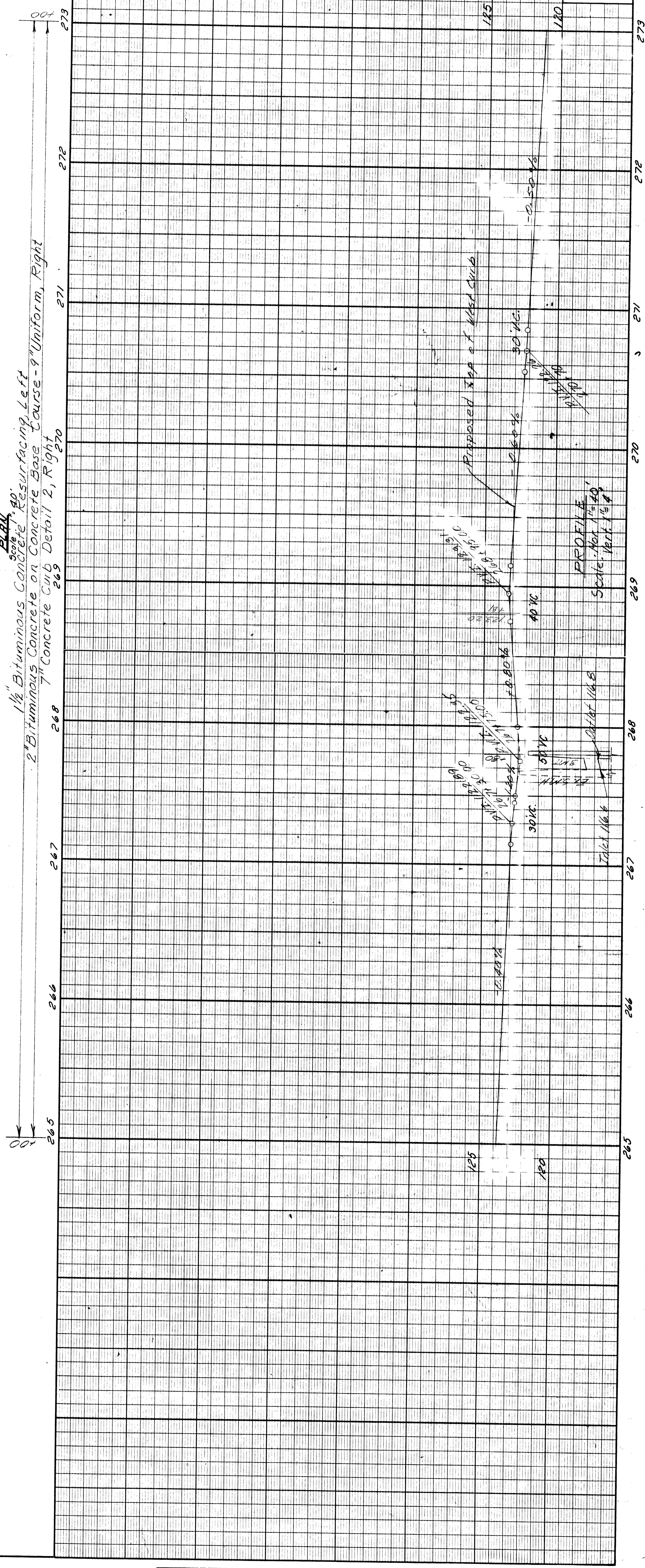
QUANTITIES THIS SHEET

NOTES  
1 For Alignment See Sh. #

- 2 Existing Side walks to remain
- 3 For Guard Rail See Sh. #
- 4 Remove Bituminous Surface to provide a smooth profile
- 5 For Typical Cross-Section of Park Widening, See Sh. #



- 1 1/2" Bituminous Concrete Resurfacing Left
- 2 Bituminous Concrete on Concrete Base Course - 9" Uniform, Right
- 7" Concrete Curb Detail 2, Right



PLAN AND PROFILES FOR EAST SERVICE DRIVE STR. 265+00 TO STR. 273+00

Drawn By B. K. Klat

FILE NO.	PROJECT	SHEET

OPERATION	BY	DATE
PRELIMINARY R.O.W. CHECKED		
FINAL DESIGN CHECKED		
FRAGED		
FINAL R.O.W. CHECK		
QUANTITIES CHECKED		
SQUAD		

OPERATION	BY	DATE
SURVEYED		
PLAN PLOTTED		
PROFILE CHECKED		
PRELIMINARY GRADE		
FEDERAL INSPECTION		

C.B.M. #6 Elev 12172 DET on Flange of Mahant  
S.W. corner Ash St and Williams Avenue.

C.B.M. #7 Elev 12188 DET on Flange of Mahant  
S.W. corner Myrtle St and Williams Avenue.

C.B.M. #8 Elev 12172 DET on Flange of Mahant  
S.W. corner Ash St and Williams Avenue.

C.B.M. #9 Elev 12172 DET on Flange of Mahant  
S.W. corner Ash St and Williams Avenue.

C.B.M. #10 Elev 12172 DET on Flange of Mahant  
S.W. corner Ash St and Williams Avenue.

STATE	PROJ. NO.	FISCAL YEAR	SHEET NO.	TOTAL SHEETS
MI	4	4	1	1

STATE	PROJ. NO.	FISCAL YEAR	SHEET NO.	TOTAL SHEETS
MI	4	4	1	1

STATE	PROJ. NO.	FISCAL YEAR	SHEET NO.	TOTAL SHEETS
MI	4	4	1	1

STATE	PROJ. NO.	FISCAL YEAR	SHEET NO.	TOTAL SHEETS
MI	4	4	1	1

STATE	PROJ. NO.	FISCAL YEAR	SHEET NO.	TOTAL SHEETS
MI	4	4	1	1

STATE	PROJ. NO.	FISCAL YEAR	SHEET NO.	TOTAL SHEETS
MI	4	4	1	1

STATE	PROJ. NO.	FISCAL YEAR	SHEET NO.	TOTAL SHEETS
MI	4	4	1	1

STATE	PROJ. NO.	FISCAL YEAR	SHEET NO.	TOTAL SHEETS
MI	4	4	1	1

STATE	PROJ. NO.	FISCAL YEAR	SHEET NO.	TOTAL SHEETS
MI	4	4	1	1

STATE	PROJ. NO.	FISCAL YEAR	SHEET NO.	TOTAL SHEETS
MI	4	4	1	1

STATE	PROJ. NO.	FISCAL YEAR	SHEET NO.	TOTAL SHEETS
MI	4	4	1	1

STATE	PROJ. NO.	FISCAL YEAR	SHEET NO.	TOTAL SHEETS
MI	4	4	1	1

STATE	PROJ. NO.	FISCAL YEAR	SHEET NO.	TOTAL SHEETS
MI	4	4	1	1

STATE	PROJ. NO.	FISCAL YEAR	SHEET NO.	TOTAL SHEETS
MI	4	4	1	1

STATE	PROJ. NO.	FISCAL YEAR	SHEET NO.	TOTAL SHEETS
MI	4	4	1	1

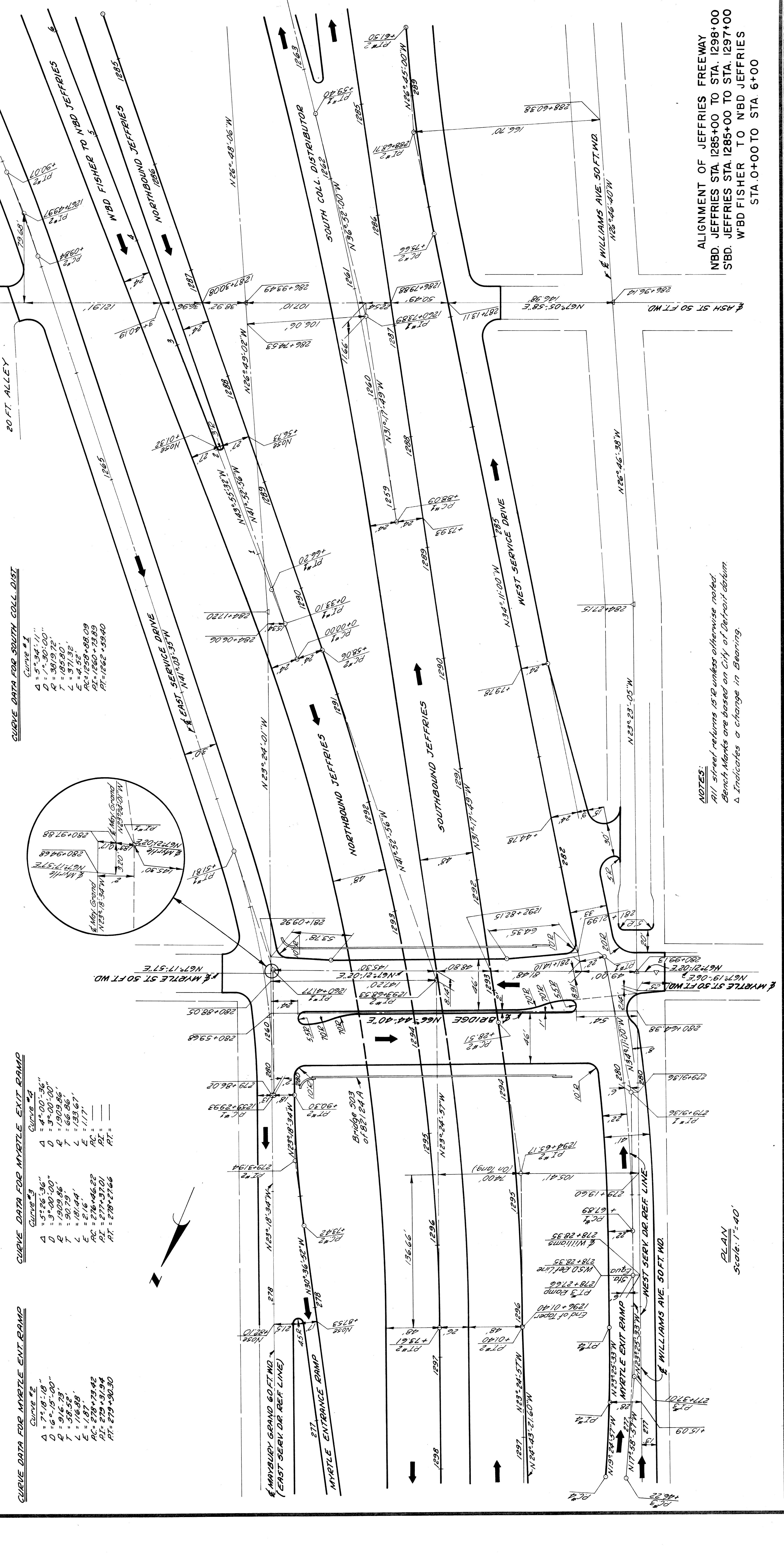
STATE	PROJ. NO.	FISCAL YEAR	SHEET NO.	TOTAL SHEETS
MI	4	4	1	1

STATE	PROJ. NO.	FISCAL YEAR	SHEET NO.	TOTAL SHEETS
MI	4	4	1	1

STATE	PROJ. NO.	FISCAL YEAR	SHEET NO.	TOTAL SHEETS
MI	4	4	1	1

STATE	PROJ. NO.	FISCAL YEAR	SHEET NO.	TOTAL SHEETS
MI	4	4	1	1

STATE	PROJ. NO.	FISCAL YEAR	SHEET NO.	TOTAL SHEETS
MI	4	4	1	1



**CURVE DATA FOR WEST SERVICE DR**

Curve #1	Curve #2
Δ = 10°45'27"	Δ = 7°26'00"
D = 4°27'08.86"	D = 4°00'00"
R = 1311.38'	R = 1432.39'
T = 123.47'	T = 93.05'
L = 246.22'	L = 185.83'
E = 5.80'	E = 3.02'
PC = 278+67.89	PC = 247+25.66
PT = 279+91.36	PT = 248+68.71
PI = 281+41.0	PI = 249+61.50

**CURVE DATA FOR SOUTH COLL. DIST.**

Curve #1	Curve #2
Δ = 5°34'11"	Δ = 5°34'11"
D = 5°34'11"	D = 5°34'11"
R = 1059.00'	R = 1059.00'
T = 185.90'	T = 185.90'
L = 371.80'	L = 371.80'
E = 5.715'	E = 5.715'
PC = 1259+88.09	PC = 1259+88.09
PT = 1260+33.89	PT = 1260+33.89
PI = 1262+59.40	PI = 1262+59.40

**CURVE DATA FOR MYRTLE EXIT RAMP**

Curve #1	Curve #2
Δ = 17°45'01"	Δ = 4°00'00"
D = 8°00'00"	D = 5°00'00"
R = 716.82'	R = 1165.92'
T = 140.13'	T = 100.13'
L = 140.13'	L = 100.13'
E = 8.7188'	E = 5.010'
PC = 1259+29.93	PC = 1257+09.84
PT = 1260+41.77	PT = 1257+29.97
PI = 1261+51.81	PI = 1257+30.07

**CURVE DATA FOR S180 JEFFRIES**

Curve #1	Curve #2
Δ = 17°45'01"	Δ = 4°00'00"
D = 8°00'00"	D = 5°00'00"
R = 716.82'	R = 1165.92'
T = 140.13'	T = 100.13'
L = 140.13'	L = 100.13'
E = 8.7188'	E = 5.010'
PC = 1259+29.93	PC = 1257+09.84
PT = 1260+41.77	PT = 1257+29.97
PI = 1261+51.81	PI = 1257+30.07

**CURVE DATA FOR S180 JEFFRIES**

Curve #1	Curve #2
Δ = 17°45'01"	Δ = 4°00'00"
D = 8°00'00"	D = 5°00'00"
R = 716.82'	R = 1165.92'
T = 140.13'	T = 100.13'
L = 140.13'	L = 100.13'
E = 8.7188'	E = 5.010'
PC = 1259+29.93	PC = 1257+09.84
PT = 1260+41.77	PT = 1257+29.97
PI = 1261+51.81	PI = 1257+30.07

**CURVE DATA FOR S180 JEFFRIES**

Curve #1	Curve #2
Δ = 17°45'01"	Δ = 4°00'00"
D = 8°00'00"	D = 5°00'00"
R = 716.82'	R = 1165.92'
T = 140.13'	T = 100.13'
L = 140.13'	L = 100.13'
E = 8.7188'	E = 5.010'
PC = 1259+29.93	PC = 1257+09.84
PT = 1260+41.77	PT = 1257+29.97
PI = 1261+51.81	PI = 1257+30.07

**CURVE DATA FOR S180 JEFFRIES**

Curve #1	Curve #2
Δ = 17°45'01"	Δ = 4°00'00"
D = 8°00'00"	D = 5°00'00"
R = 716.82'	R = 1165.92'
T = 140.13'	T = 100.13'
L = 140.13'	L = 100.13'
E = 8.7188'	E = 5.010'
PC = 1259+29.93	PC = 1257+09.84
PT = 1260+41.77	PT = 1257+29.97
PI = 1261+51.81	PI = 1257+30.07

**CURVE DATA FOR S180 JEFFRIES**

Curve #1	Curve #2
Δ = 17°45'01"	Δ = 4°00'00"
D = 8°00'00"	D = 5°00'00"
R = 716.82'	R = 1165.92'
T = 140.13'	T = 100.13'
L = 140.13'	L = 100.13'
E = 8.7188'	E = 5.010'
PC = 1259+29.93	PC = 1257+09.84
PT = 1260+41.77	PT = 1257+29.97
PI = 1261+51.81	PI = 1257+30.07

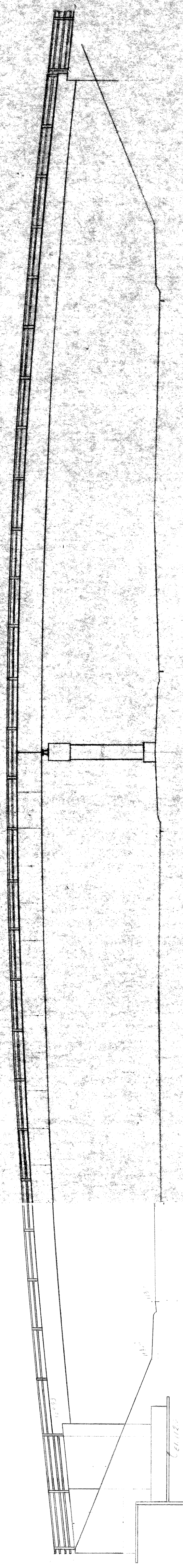
ALIGNMENT OF JEFFRIES FREEWAY  
 NBD. JEFFRIES STA. 1285+00 TO STA. 1298+00  
 SBD. JEFFRIES STA. 1285+00 TO STA. 1297+00  
 WBD FISHER TO NBD JEFFRIES  
 STA. 0+00 TO STA. 6+00

NOTES:  
 All street returns 15'R unless otherwise noted.  
 Bench Marks are based on City of Detroit datum.  
 Δ Indicates a change in Bearing.

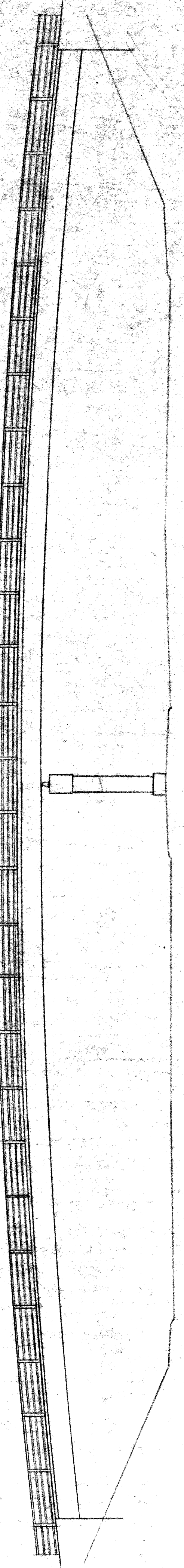
PLAN  
 Scale: 1"=40'



STUDY 990(1)  
DOI of 82.124A  
SLEDEN & JEFFRIES  
BY JMS  
CHB

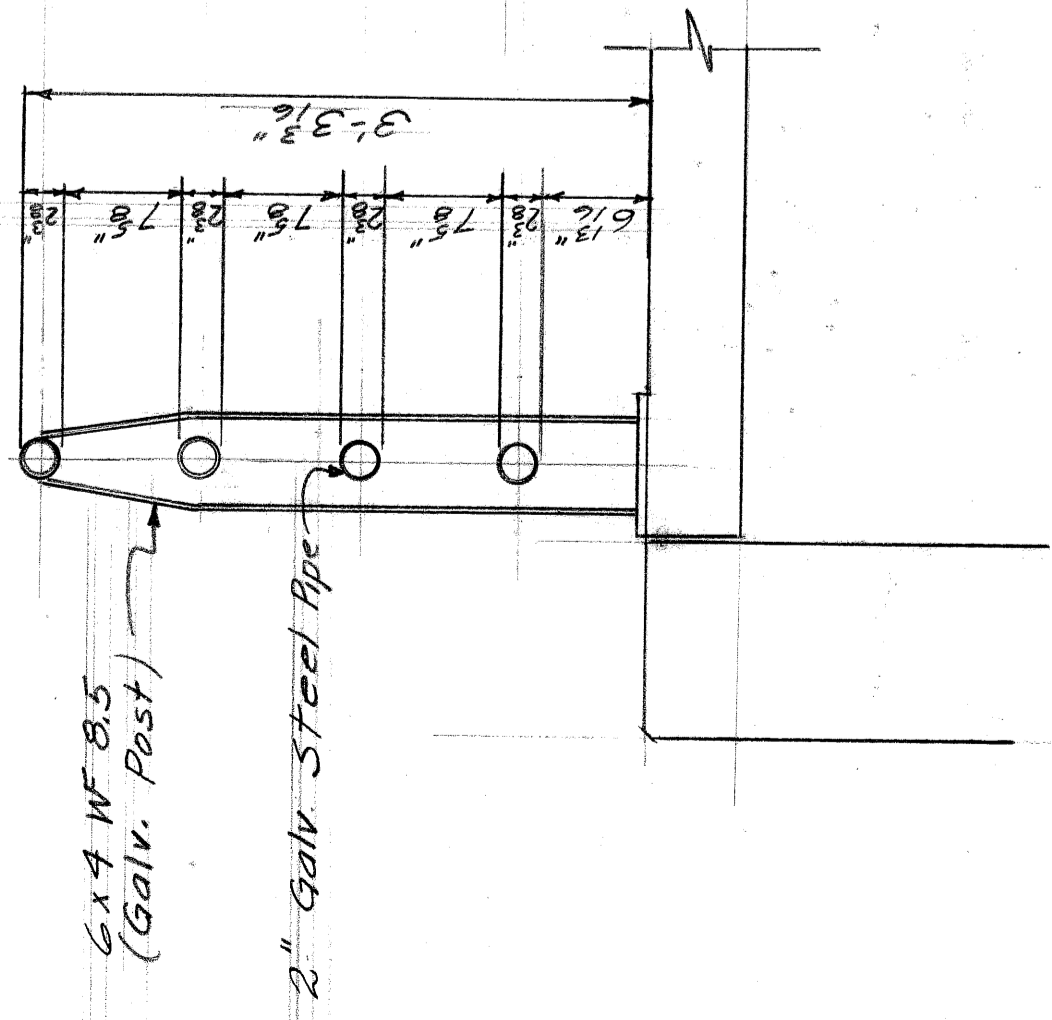


ELEVATION  
(Through-Type Sinder)

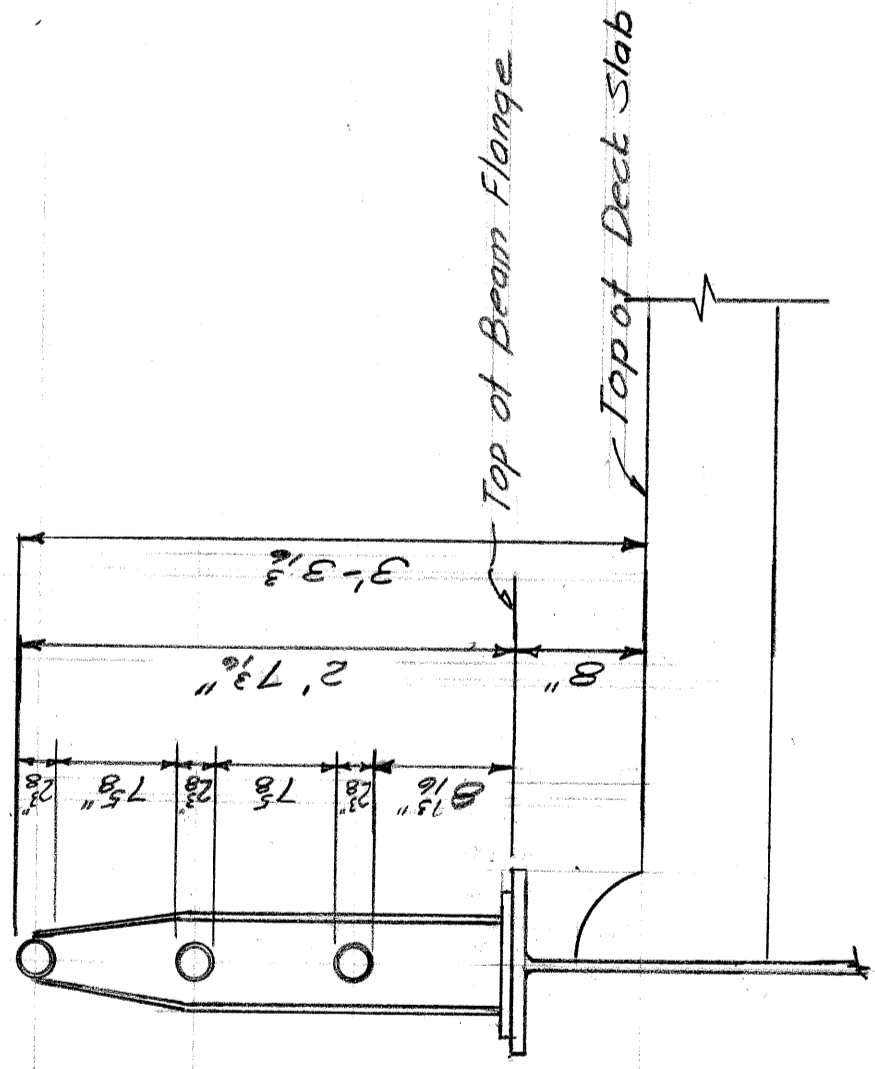


ELEVATION  
(Composite Joint)

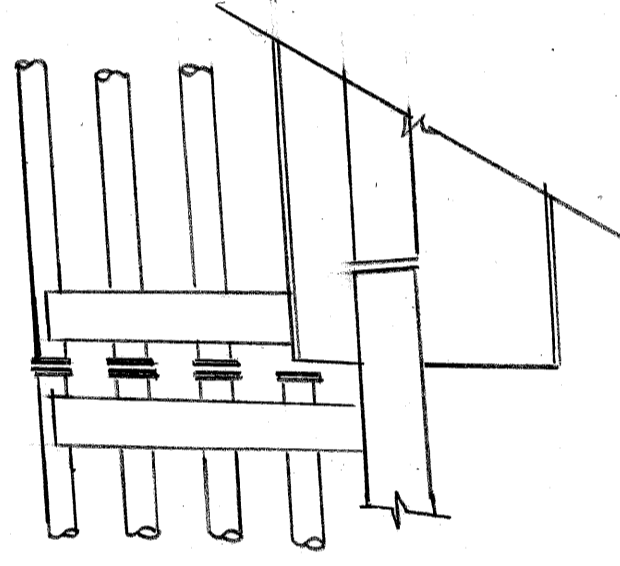




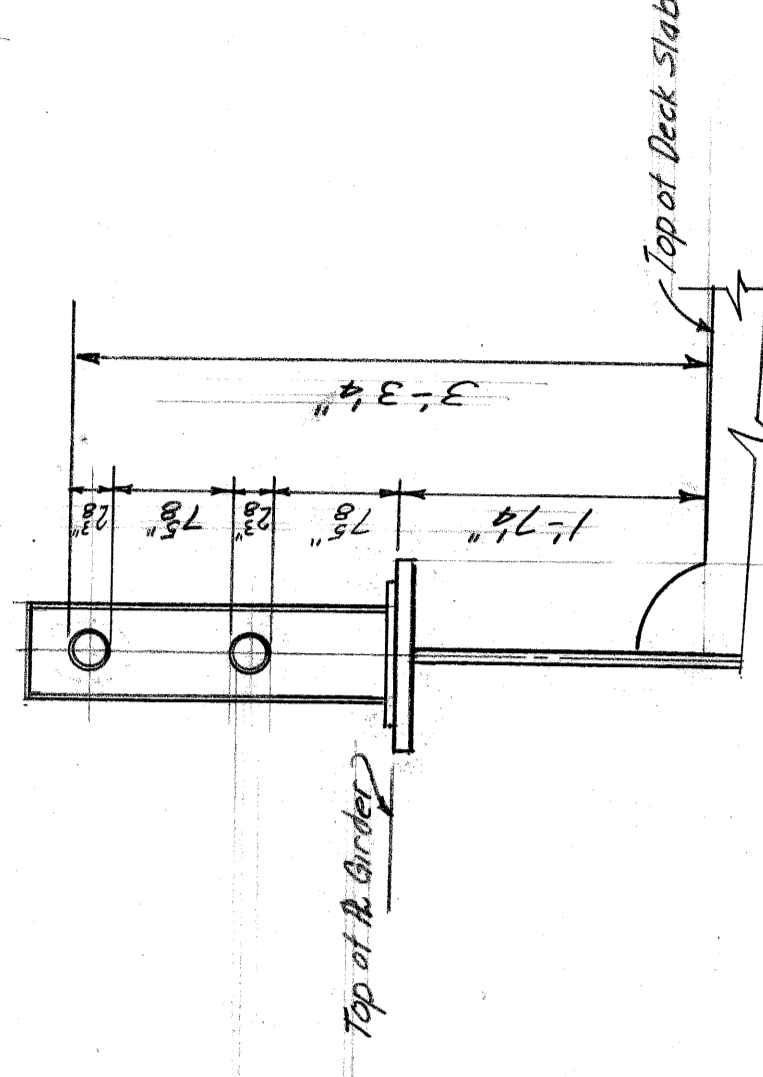
SECTION SHOWING RAILING ON RAMP



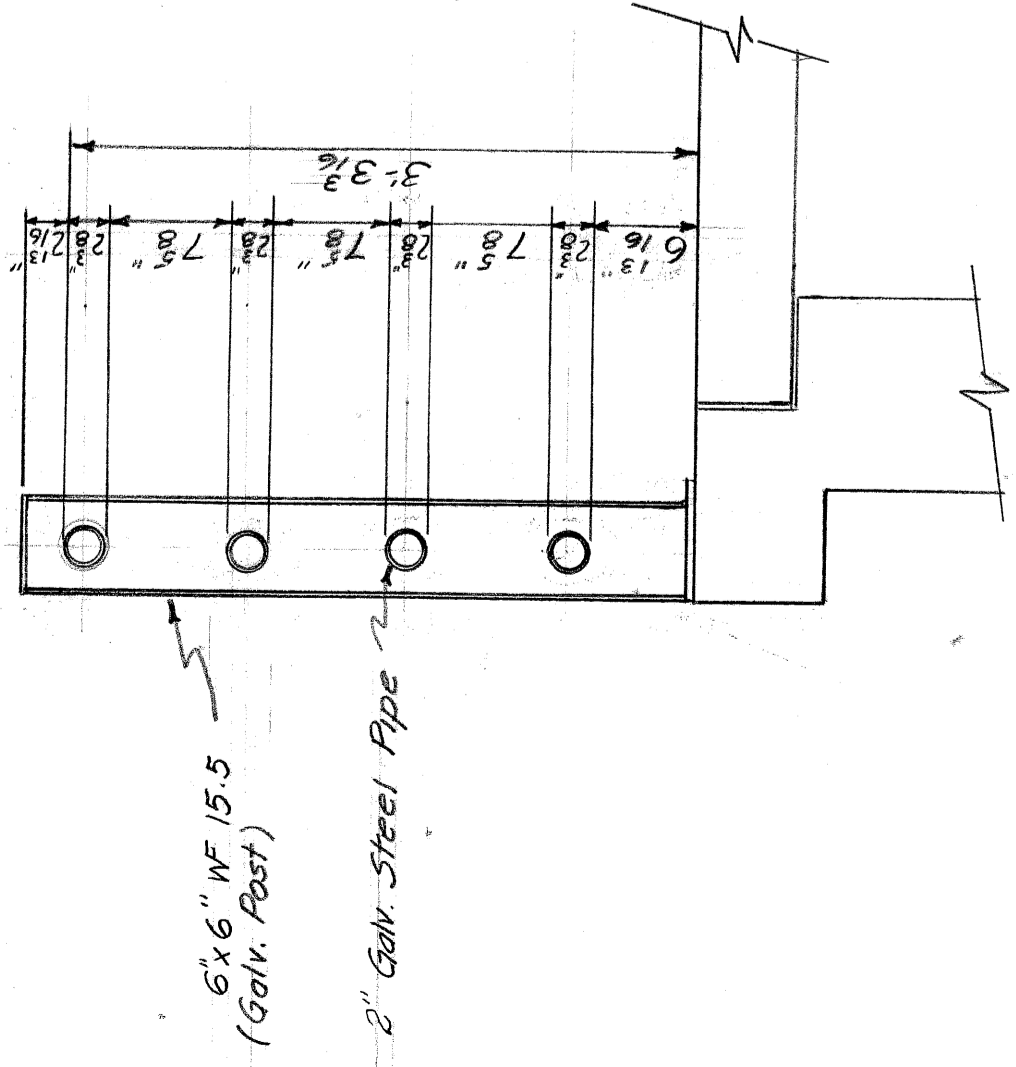
SECTION SHOWING RAILING ON BEAM



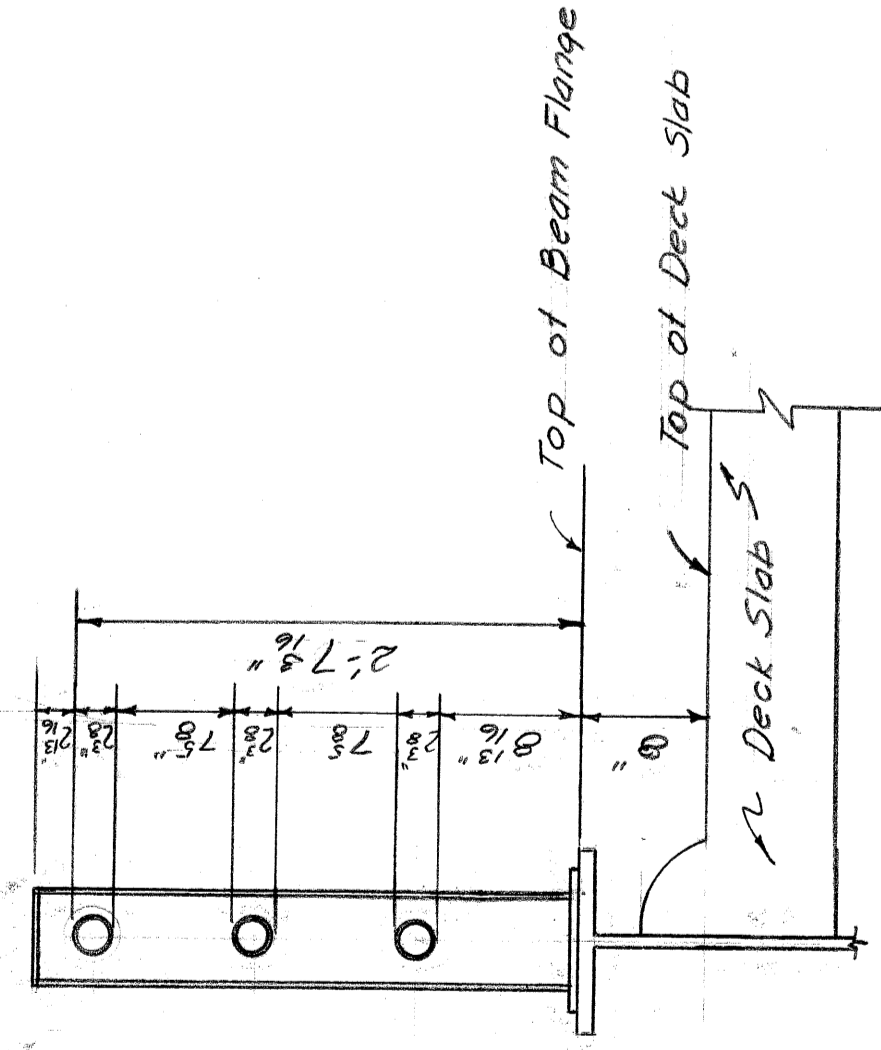
PARTIAL ELEVATION SHOWING RAILING ON RAMP & RAILING ON BEAM



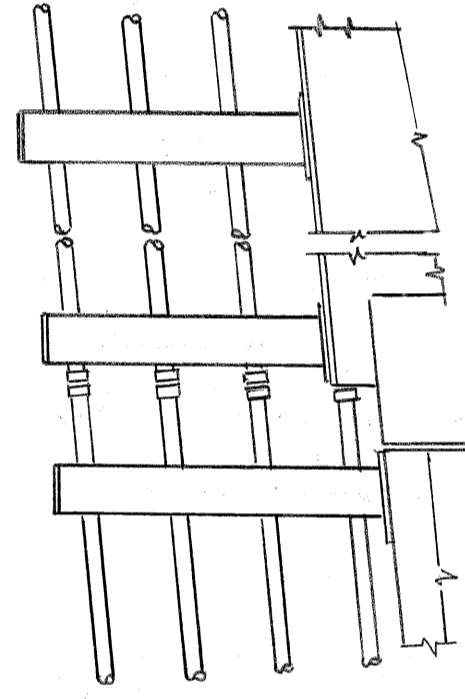
SECTION SHOWING GALVANIZED STEEL RAILING ON PLATE GIRDER (STUDY POI of 82124 A)



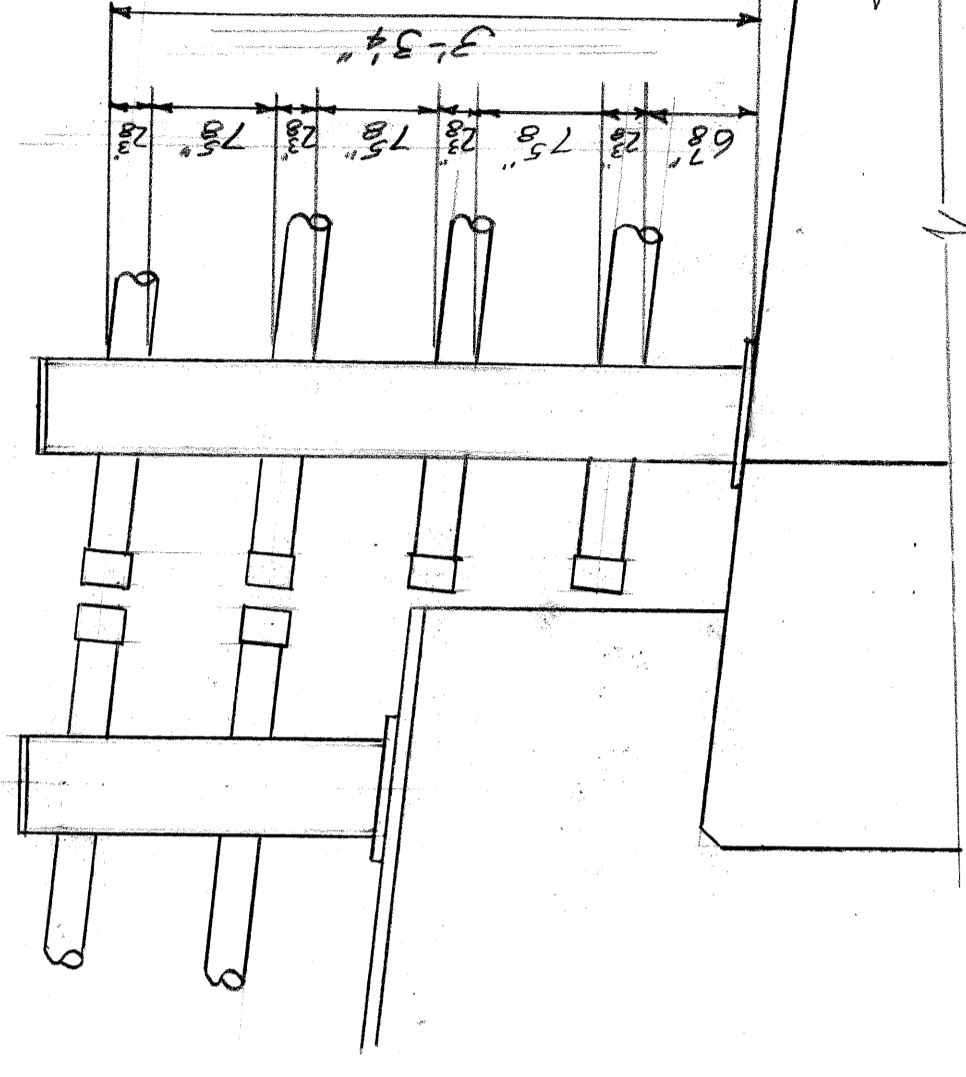
SECTION SHOWING RAILING ON RAMP



SECTION SHOWING RAILING ON BEAM



PARTIAL ELEVATION SHOWING RAILING ON RAMP & RAILING ON BEAM



PARTIAL ELEVATION SHOWING GALV. STEEL RAILING ON RAMP & GIRDER (STUDY POI of 82124 A)

BRIDGE RAILING - WESTMINSTER AVE. PEDESTRIAN BRIDGE (PO5 of 82252 K)  
GREENDALE AVE. PEDESTRIAN BRIDGE (PO3 of 82252 I)

BRIDGE RAILING - LANTZ AVE. PEDESTRIAN BRIDGE (PO6 of 82252 D)  
PHILADELPHIA AVE. PEDESTRIAN BRIDGE (PO9 of 82252 B)

GALVANIZED STEEL RAILINGS  
 FOR PEDESTRIAN BRIDGES  
 ON I-75

Made by WAL  
 Chd. J40

Feb 10, 1966  
 2-10-66