

**GENERAL PLAN OF STRUCTURE**

CHRYSLER-FORD INTERCHANGE  
TURNING ROADWAY ADDITION TO DEQUINRE YARD BRIDGE  
FOR THE WALTER P. CHRYSLER EXPRESSWAY IN DETROIT

MICHIGAN STATE HIGHWAY DEPARTMENT

APPROVED: *[Signature]* 10-3-61  
ENGINEER OF DESIGN - CONSULTANTS  
XO1 of 82024B,C

APPROVED: *[Signature]* 10-3-61  
COMMANING ENGINEER

NO. DATE DESCRIPTION REVISIONS

PLANS PREPARED BY  
CITY OF DETROIT  
DEPARTMENT OF PUBLIC WORKS  
BUREAU OF HIGHWAYS AND EXPRESSWAYS

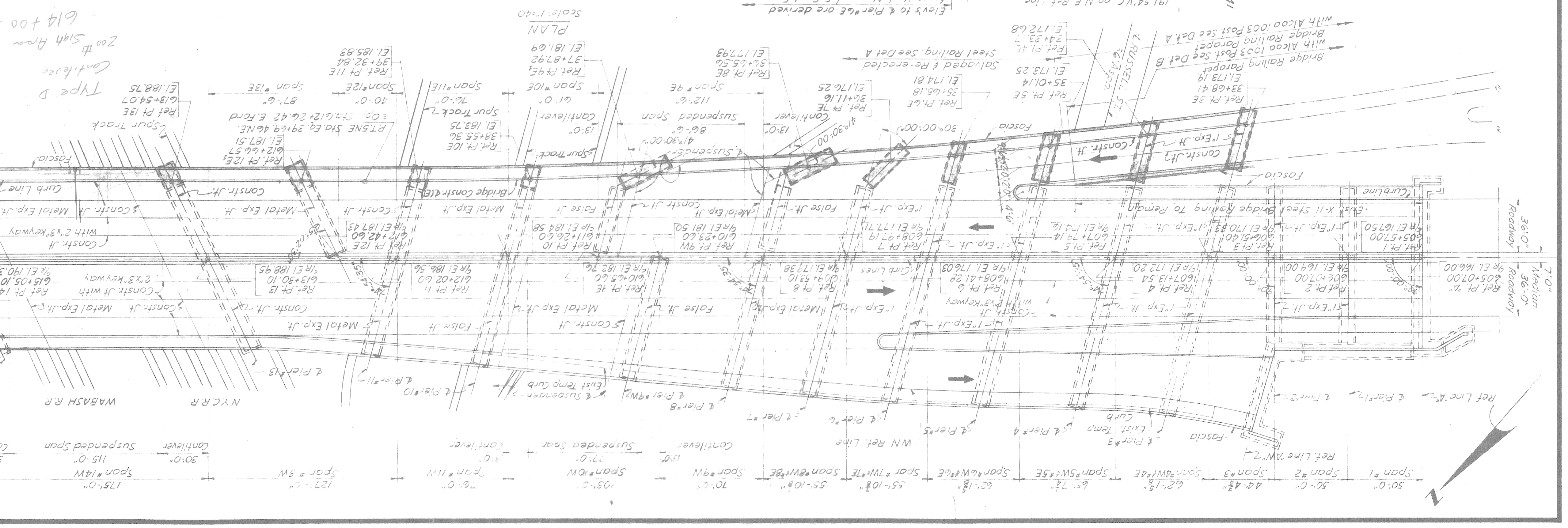
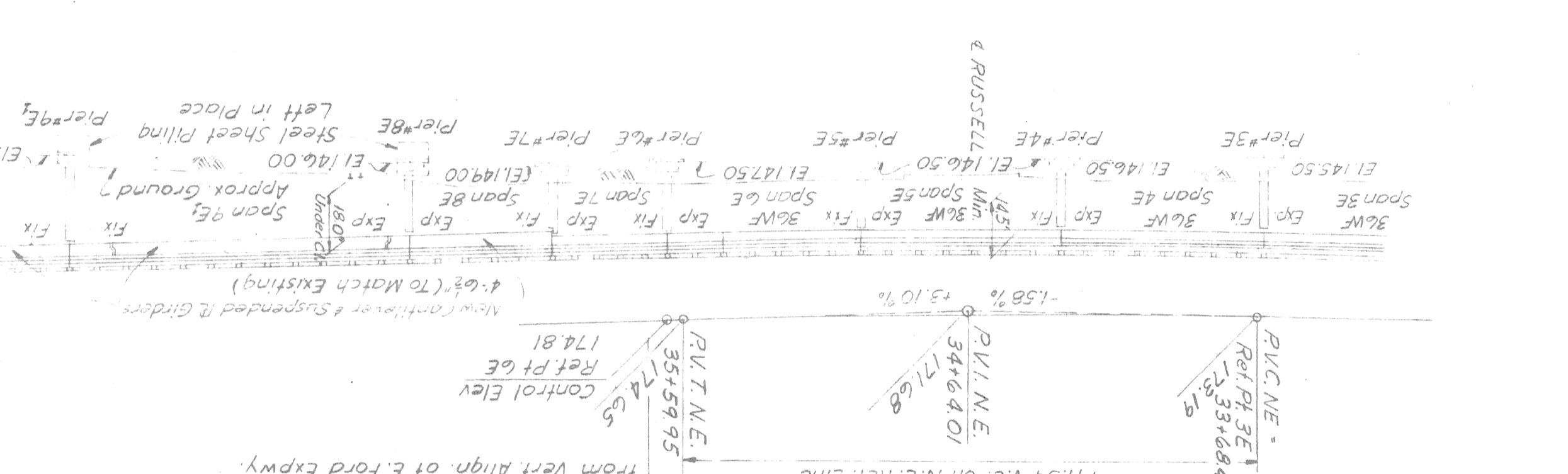
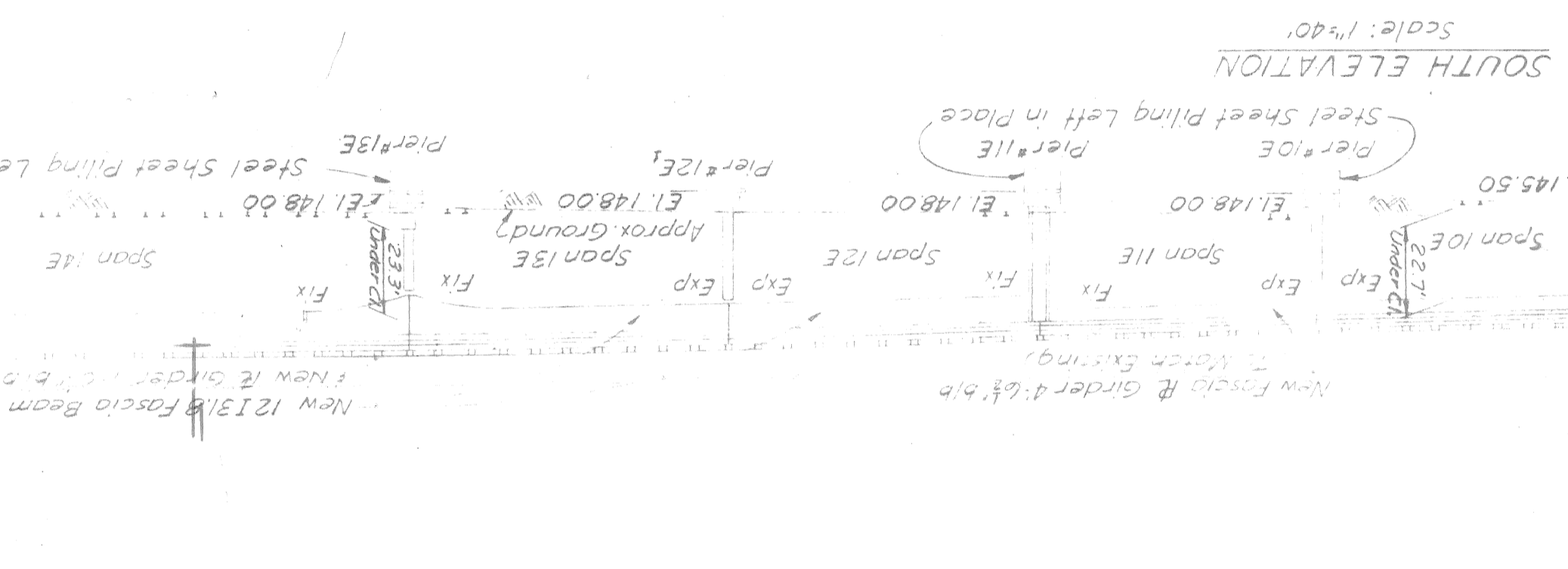
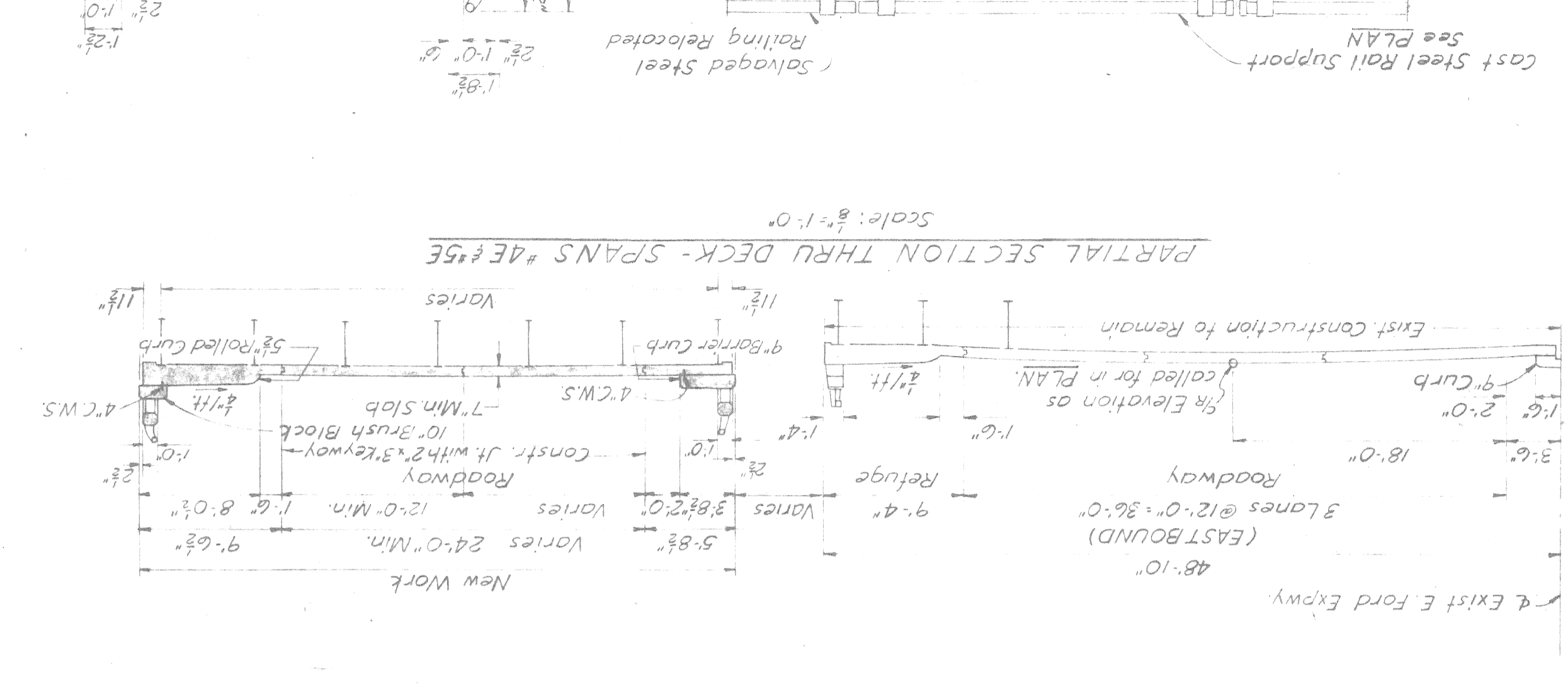
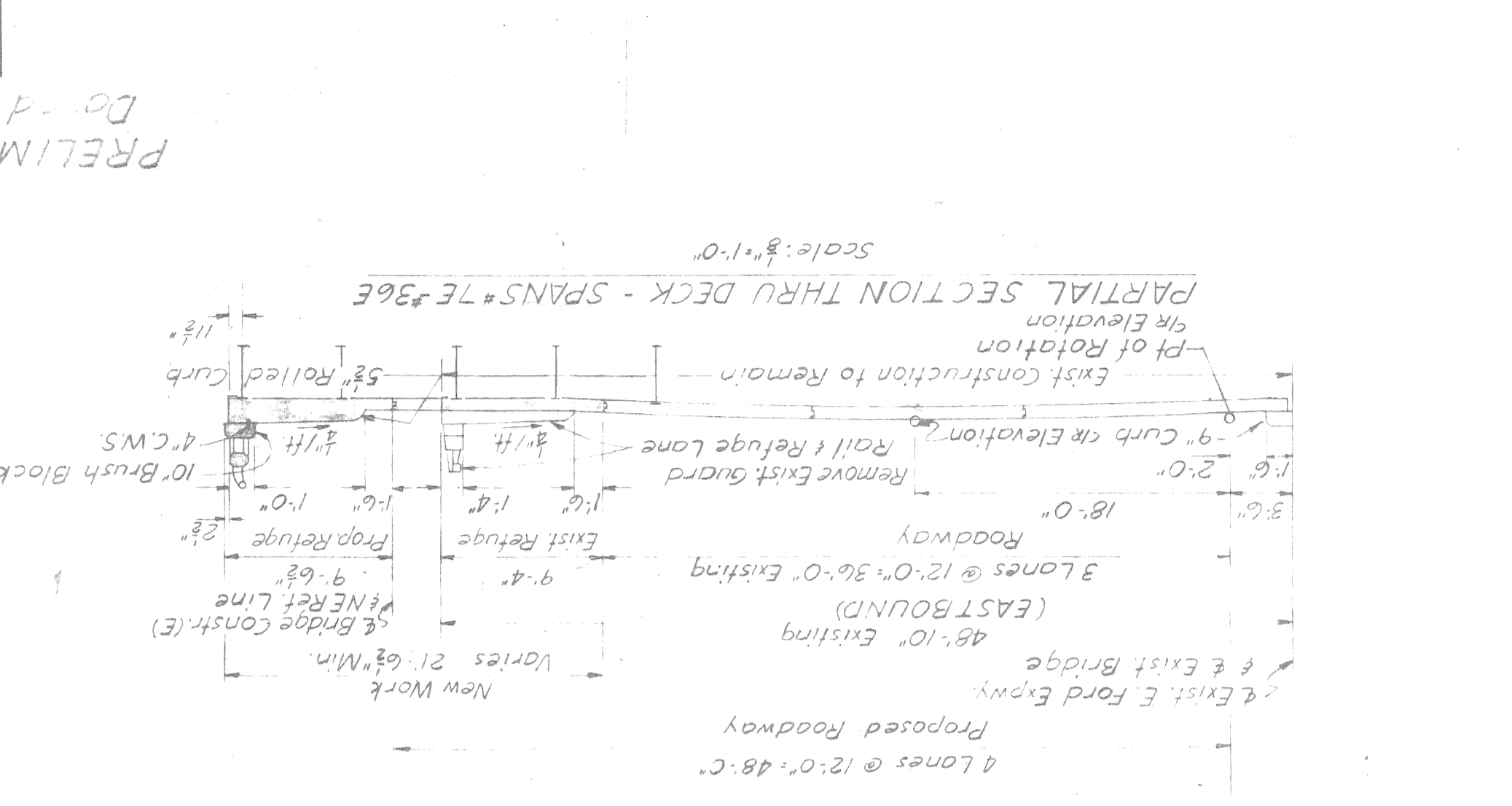
CONTRACT  
JOB NO. PW 897B(5)

RECOMMENDED FOR APPROVAL  
St. Assoc. Bridge Eng.  
St. Assoc. Eng. - Expy. Design

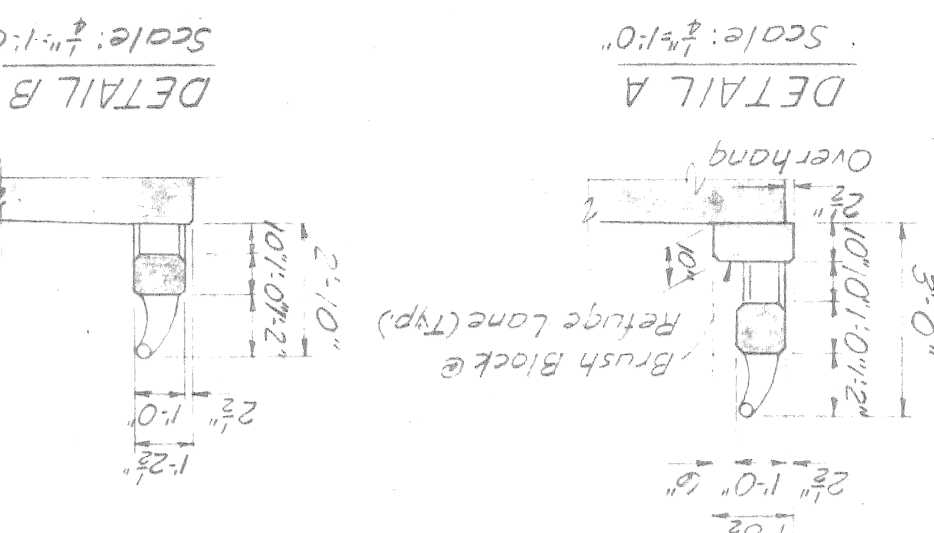
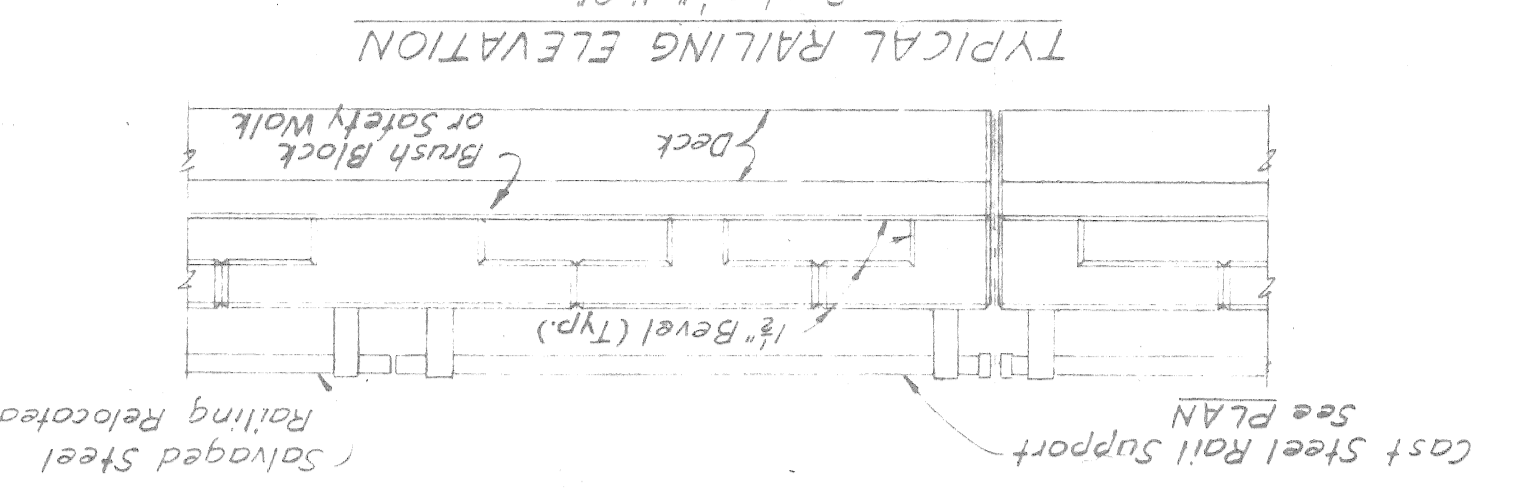
PRELIMINARY PLAN A  
Dg - 4 Sept 26, 1961

NO.	DATE	DESCRIPTION	REVISIONS

Work this sheet with sheet



Note: Tube will be continuous thru posts for Bridge Rolling Rampet Type as shown on M.S.H.D. Std. Dwg. R-11.









JOB NO. PW 897 B(5)  
 PLAN PREPARED BY  
 CITY ENGINEERS OFFICE  
 DEPARTMENT OF PUBLIC WORKS  
 BUREAU OF HIGHWAYS AND EXPRESSWAYS  
 CITY OF DETROIT

CHRYSLER-FORD INTERCHANGE  
 TURNING ROADWAY ADDITION TO DEQUINRE YARD BRIDGE  
 FOR THE WALTER P. CHRYSLER EXPRESSWAY IN DETROIT  
 CITY OF DETROIT  
 SHEET 11 OF 11  
 CHECKED BY M. H. HARRIS  
 DRAWN BY M. H. HARRIS  
 SCALE 1/8" = 1'-0"  
 DATE 9-21-61

PROPOSED UTILITIES AND  
 EXISTING UTILITIES AND  
 ALTERATIONS  
 REVISIONS

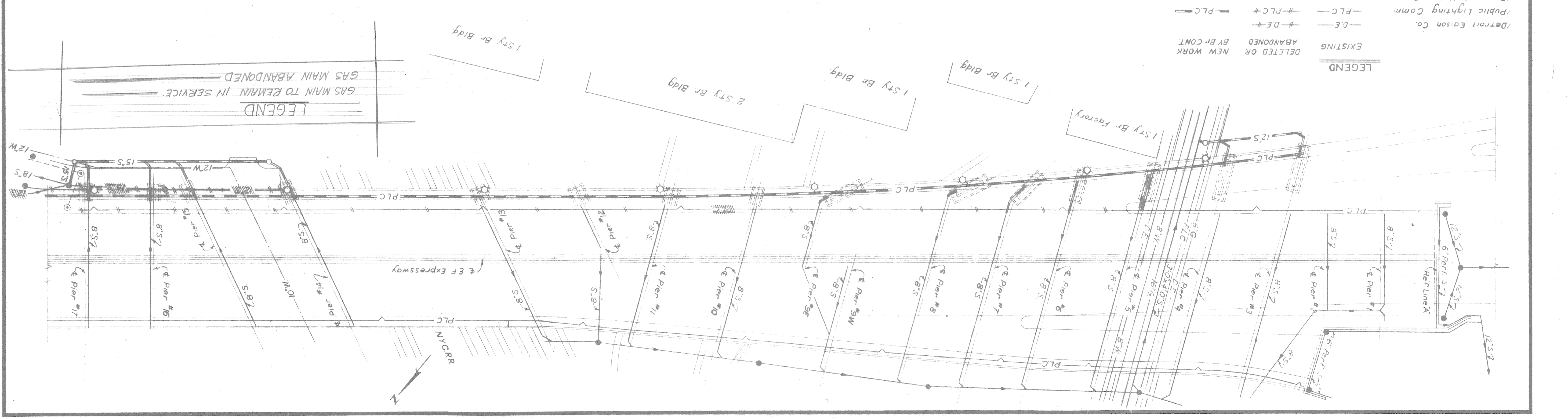
GENERAL NOTES:  
 1 Existing PLC Lighting Strds within Bridge Const Limits are to be Relocated.  
 2 Alterations to existing Bridge Drainage & Installation of new Sewers are to be correlated with construction of new Plans & Road Plans  
 3 All existing connections to sewers, that are to be abandoned, shall be plugged with concrete Bulkheads  
 4 Adequate drainage of existing & proposed Bridge Deck & the Construction Area shall be maintained during all Construction  
 5 Bridge Construction & Utility Alterations are included in the Package Contract for Control Section 82024B, C5  
 6 New Permanent Lighting Standards Shown.

MISCELLANEOUS QUANTITIES  
 413' of 15" Sewer  
 402' of 12" Sewer  
 765' of 8" Sewer  
 Bridge Manholes 4 Each

MICHIGAN STATE HIGHWAY DEPARTMENT

CHRYSLER-FORD INTERCHANGE  
 TURNING ROADWAY ADDITION TO DEQUINRE YARD BRIDGE  
 FOR THE WALTER P. CHRYSLER EXPRESSWAY IN DETROIT  
 CITY OF DETROIT  
 SHEET 11 OF 11  
 CHECKED BY M. H. HARRIS  
 DRAWN BY M. H. HARRIS  
 SCALE 1/8" = 1'-0"  
 DATE 9-21-61

PRELIMINARY PLAN A  
 Dated Sept 26, 1961  
 CONTROL SECTION 82024B  
 from MSND  
 Rec'd 10/10/61  
 W. H. HARRIS



LEGEND  
 EXISTING  
 DELETED OR NEW WORK  
 ABANDONED BR BR CONT  
 /Detroit Edison Co.  
 /Public Lighting Comm.  
 /Dept of Water Supply  
 /Mich Consolidated Gas Co.  
 Sewers  
 Manhole  
 Catch Basin

LEGEND  
 GAS MAIN TO REMAIN IN SERVICE  
 GAS MAIN ABANDONED