

MICHIGAN STATE HIGHWAY DEPARTMENT
 CHRYSLER-FISHER INTERCHANGE
 NORTH BND. TO WEST BND. TURNING ROADWAY CROSSING THE
 WALTER P. CHRYSLER EXPRESSWAY IN DETROIT
 CITY OF DETROIT
 REVISION NO. 1
 DRAWN BY C. Anderson 7/59
 CHECKED BY R. Morris 8/59
 TRACED BY R. Morris 8/59
 SHEET NO. 8
 B14 OF 82-22-18

PLANS PREPARED BY
 CITY OF DETROIT
 DEPARTMENT OF PUBLIC WORKS
 CITY ENGINEERS OFFICE
 BUREAU OF HIGHWAYS AND EXPRESSWAYS
 JOB No. PW997B(2)
 RECOMMENDED FOR APPROVAL
 R. S. Williams
 ENGINEER OF DESIGN - CONSULTANTS
 APPROVED
 COORDINATING ENGINEER
 APPROVED

SURVEY PLAN
 SCALE 1" = 40'

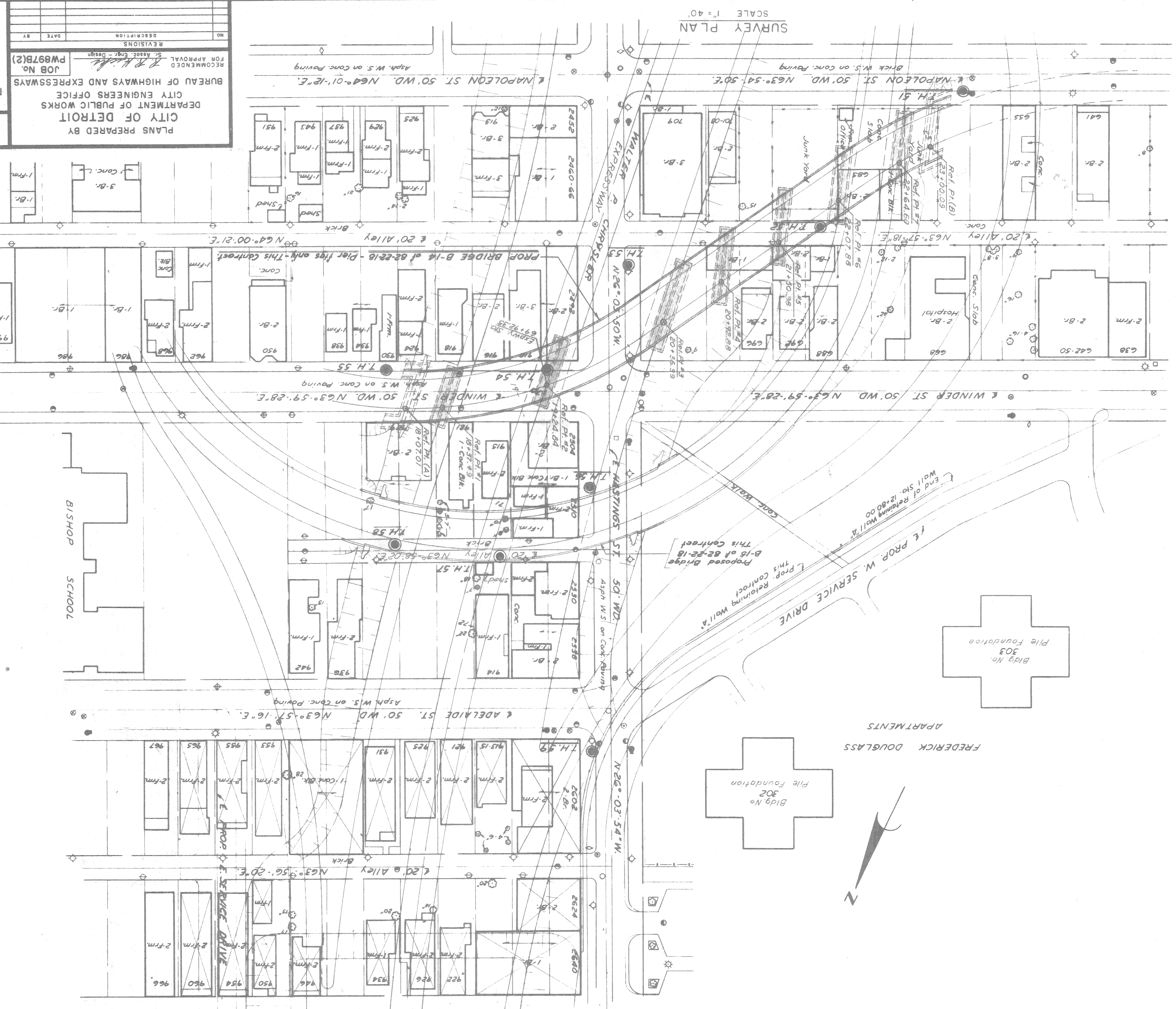
CONTROL SECTION 82251-30202
 PRELIMINARY PLAN "A"
 Sept. 14, 1959

*Indicate for Corral & for
 all alignment & utility
 go under etc.*

See Sheet No. 2 for Log of Borings.

NOTES:
 The topography shown represents conditions existing at the time the field survey was made. These conditions may have been altered by the operations of others before this work is started.
 [X] indicates removal under prior contract.
 Bench marks are referenced to City of Detroit Datum.
 This set of drawings covers only the construction of the pier footings of the bridge for the North Bnd. to the West Bnd. Turning Roadway crossing the Walter P. Chrysler Expressway, including incidental drainage, porous backfill, and incidental work.

- UTILITY LEGEND
- Sewer Manhole
 - Sewer Inlet or Catchbasin
 - Water Gate Well & Valve
 - Water Gate & Box
 - Water Service Shut-off
 - Detroit Edison Co. Manhole
 - Gas Valve
 - D.F.D. Manhole
 - D.S.R. Pole
 - M.B.T. Pole
 - D.F.D. Alarm Box
 - Fire Hydrant
 - D.E. Pole
 - P.L.C. Pole (Without Light)
 - P.L.C. Lightpole
 - Test Hole for Soil Profile



MICHIGAN STATE HIGHWAY DEPARTMENT

CHARYLER-FISHER INTERCHANGE
 NORTH BND. TO WEST BND. TURNING ROADWAY CROSSING THE
 WALTER P. CHRYSLER EXPRESSWAY IN DETROIT
 CITY OF DETROIT

SOIL BORING LOG

APPROVED _____ COORDINATING ENGINEER
 APPROVED _____ ENGINEER OF DESIGN-CONSULTANTS

B14 OF 82-22-18

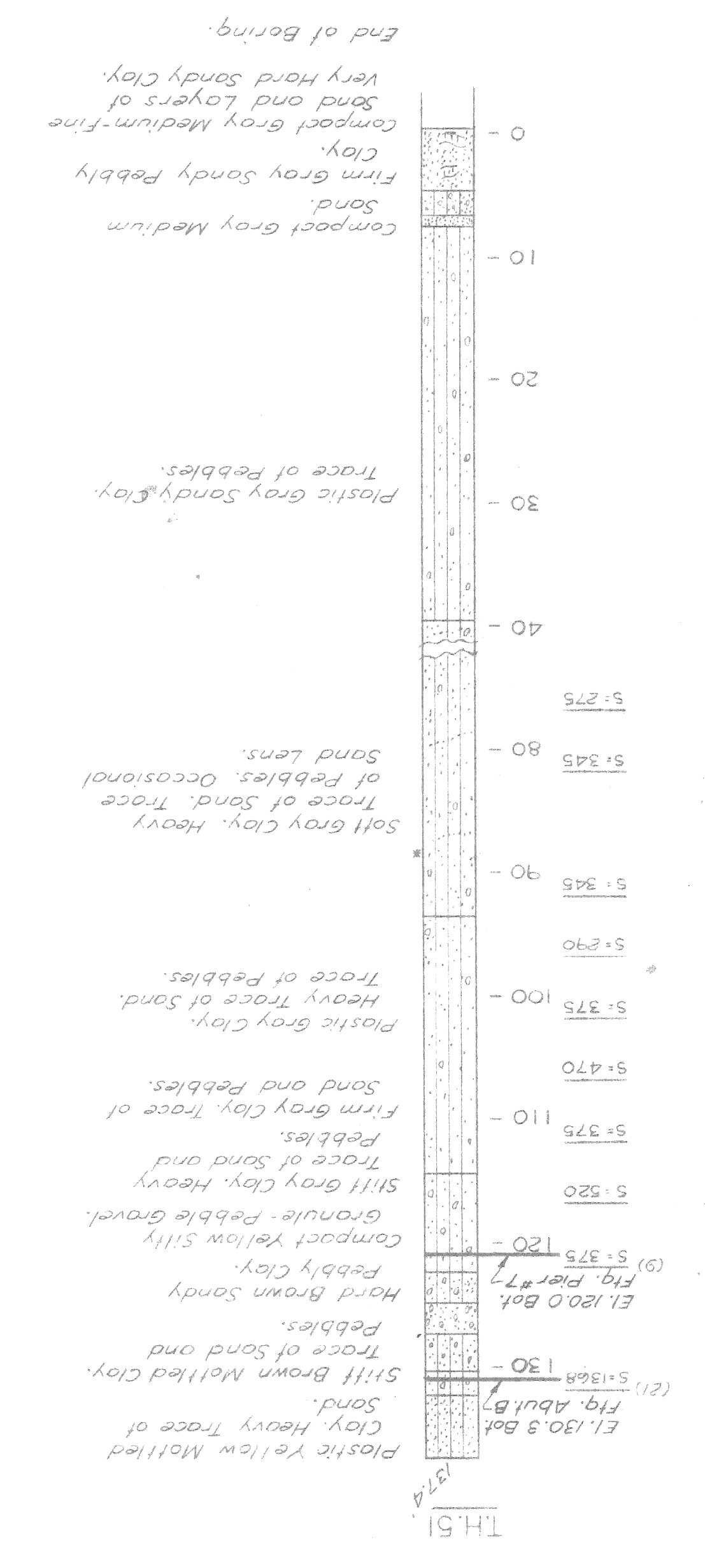
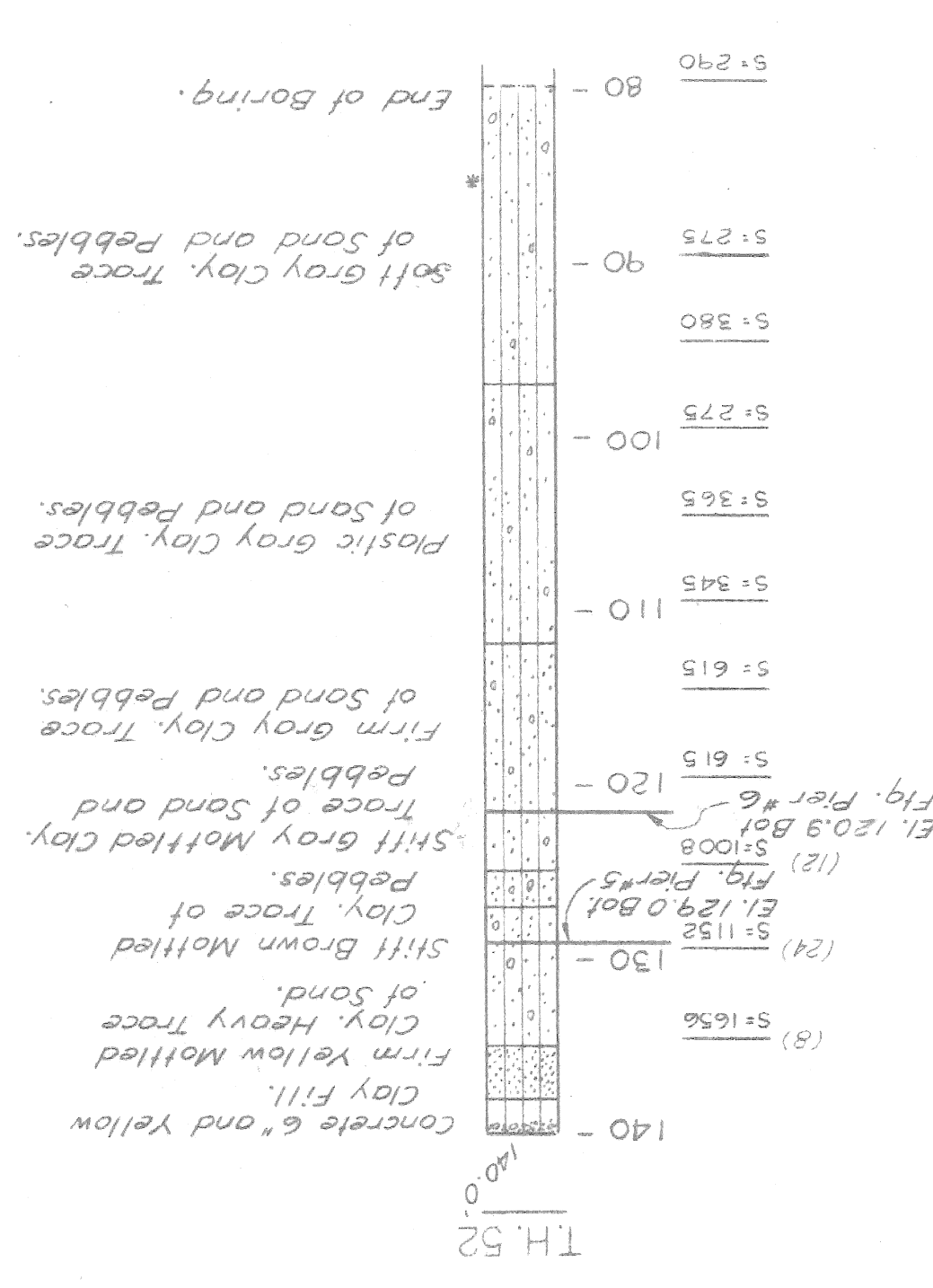
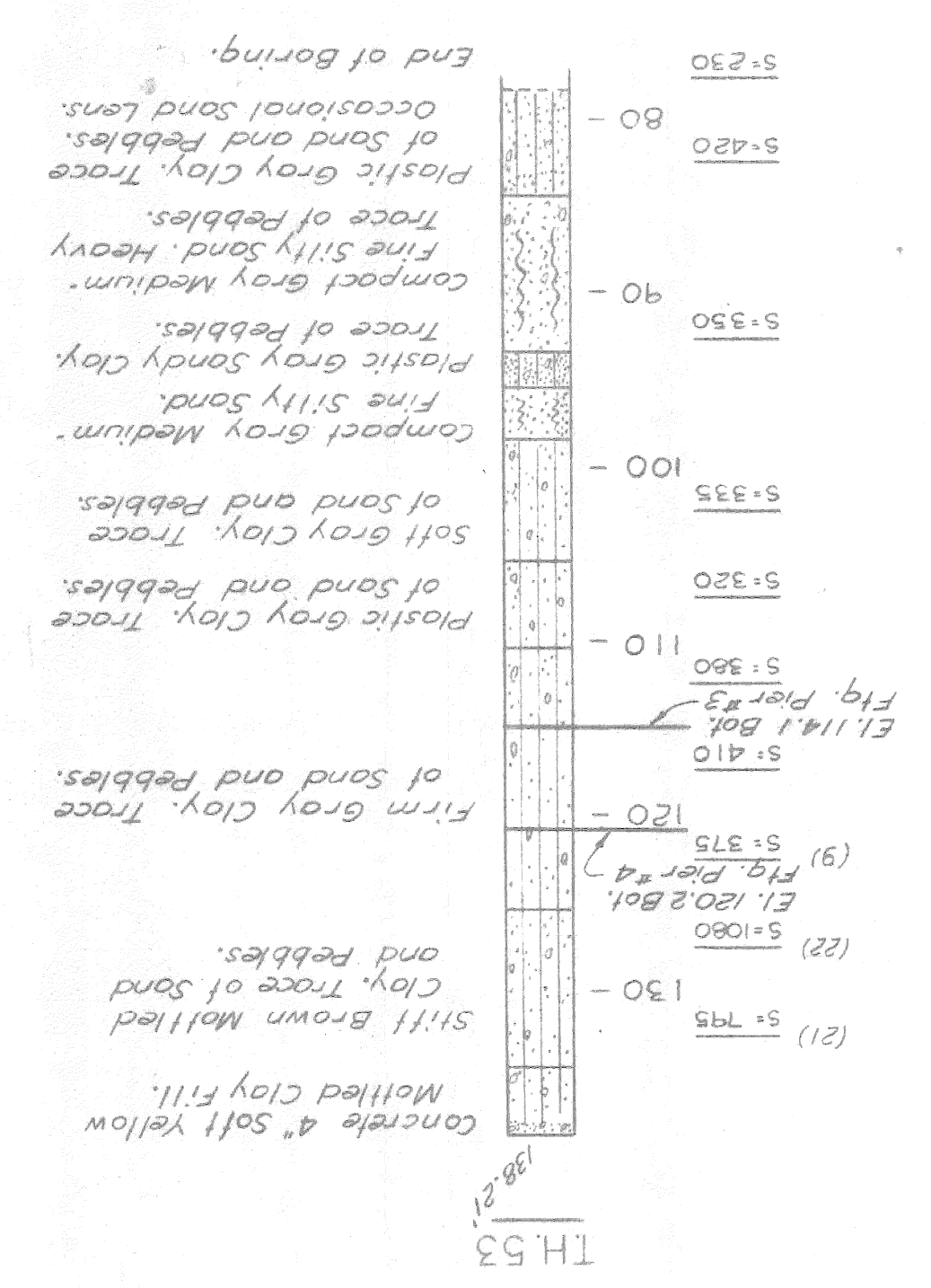
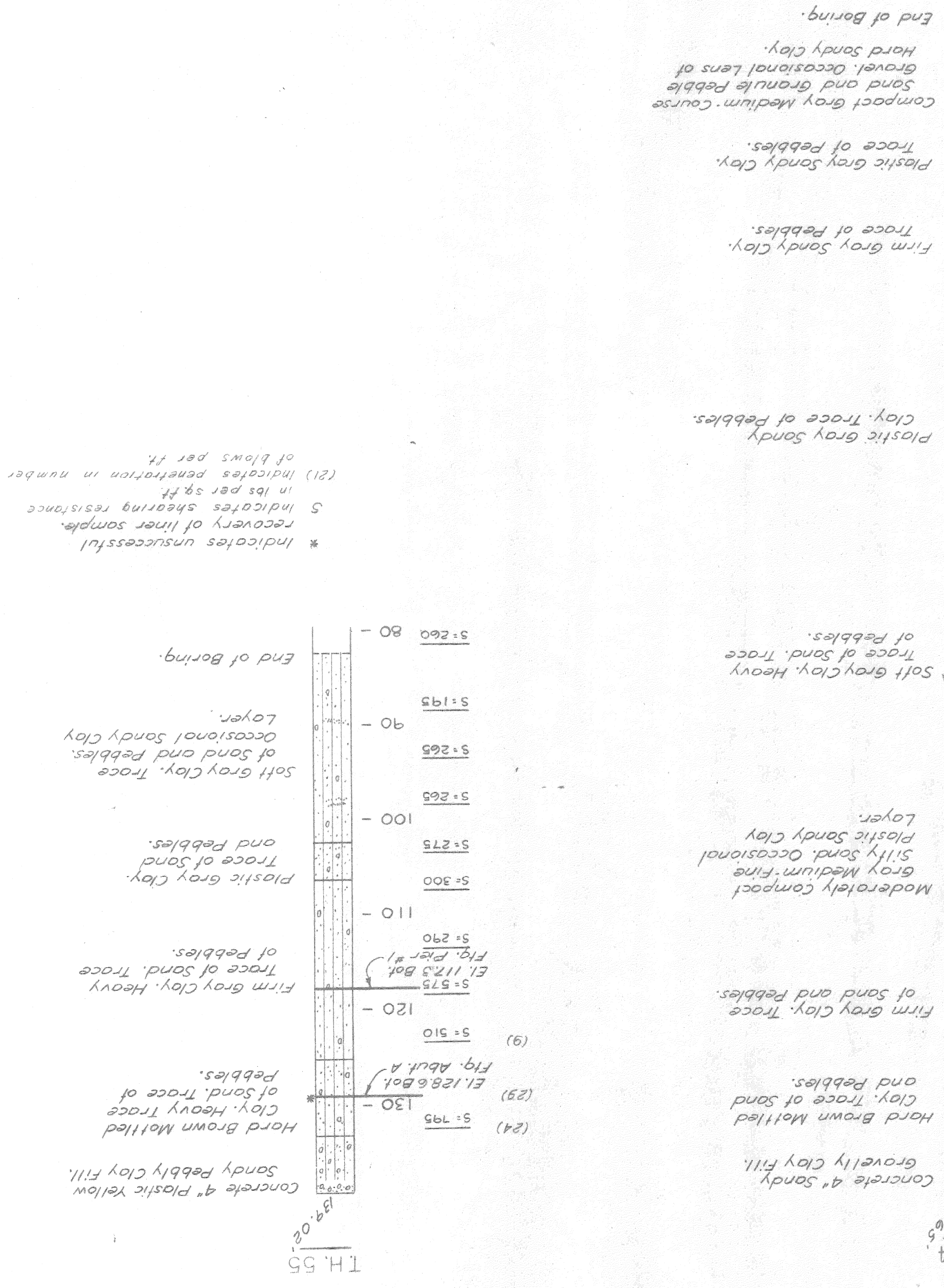
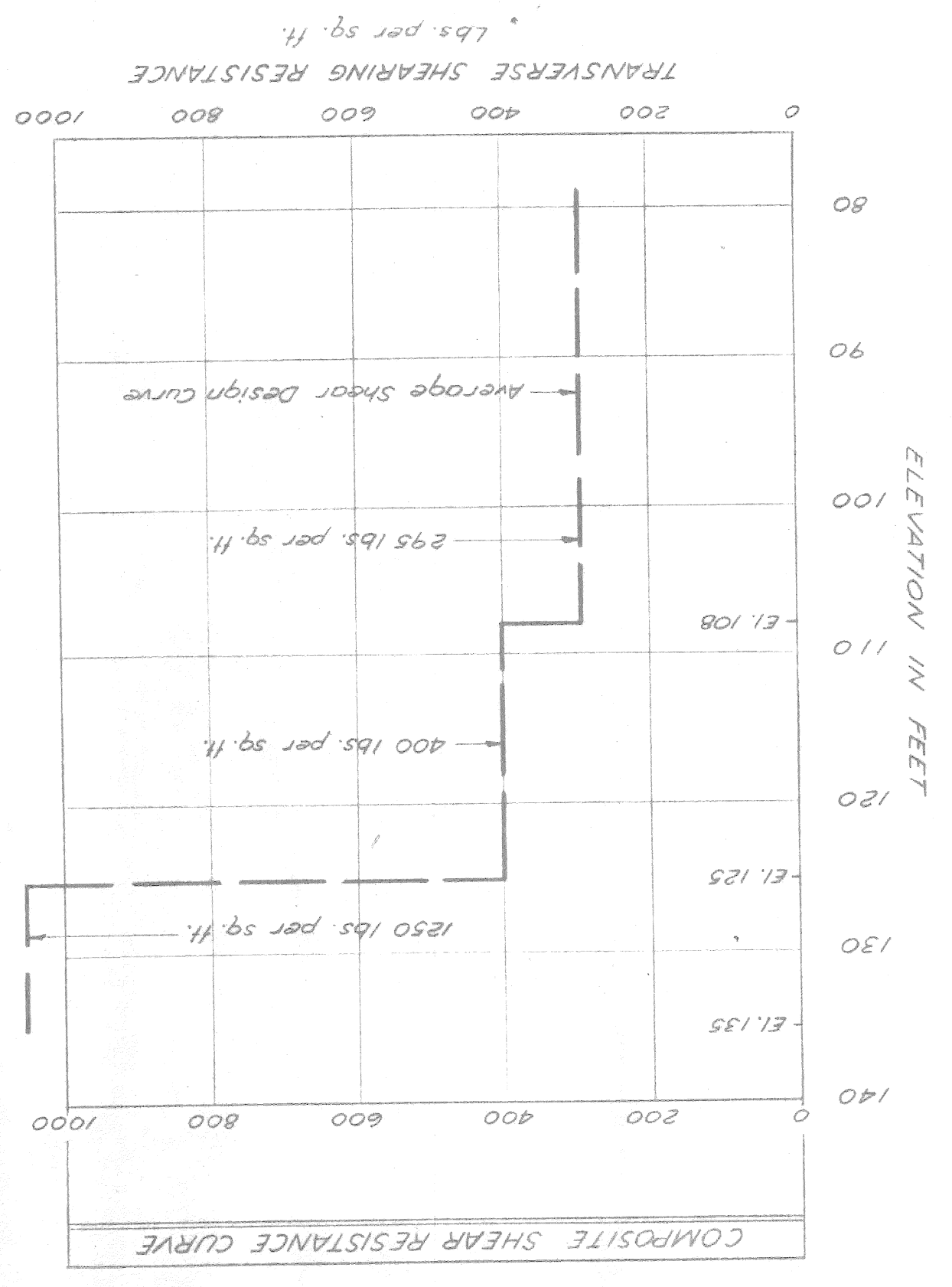
PLANS PREPARED BY
 CITY OF DETROIT
 DEPARTMENT OF PUBLIC WORKS
 CITY ENGINEERS OFFICE
 BUREAU OF HIGHWAYS AND EXPRESSWAYS

JOB NO. PW 897B(2)

REVISIONS

NO.	DESCRIPTION	DATE	BY

Work this drwg. with drwg. #1.



LOG OF BORINGS

MICHIGAN STATE HIGHWAY DEPARTMENT

GENERAL DRAWING

APPROVED ENGINEER OF DESIGN - CONSULTANTS

APPROVED COORDINATING ENGINEER

APPROVED SHEET 9-59

CHECKED BY 0.910 L

TRACED BY F. W. H. S.

DRAWN BY F. W. H. S.

SCALE: VERT. 1" = 4'

CITY OF DETROIT

RECOMMENDED FOR APPROVAL *R. N. W.*

JOB No. PW697B(2)

DESCRIPTION

DATE

BY

NO.

REVISION

PLANS PREPARED BY

CITY OF DETROIT

DEPARTMENT OF PUBLIC WORKS

CITY ENGINEERS OFFICE

BUREAU OF HIGHWAYS AND EXPRESSWAYS

CHRYSLER-FISHER INTERCHANGE

NORTH BND. TO WEST BND. TURNING ROADWAY CROSSING THE

WALTER P. CHRYSLER EXPRESSWAY IN DETROIT

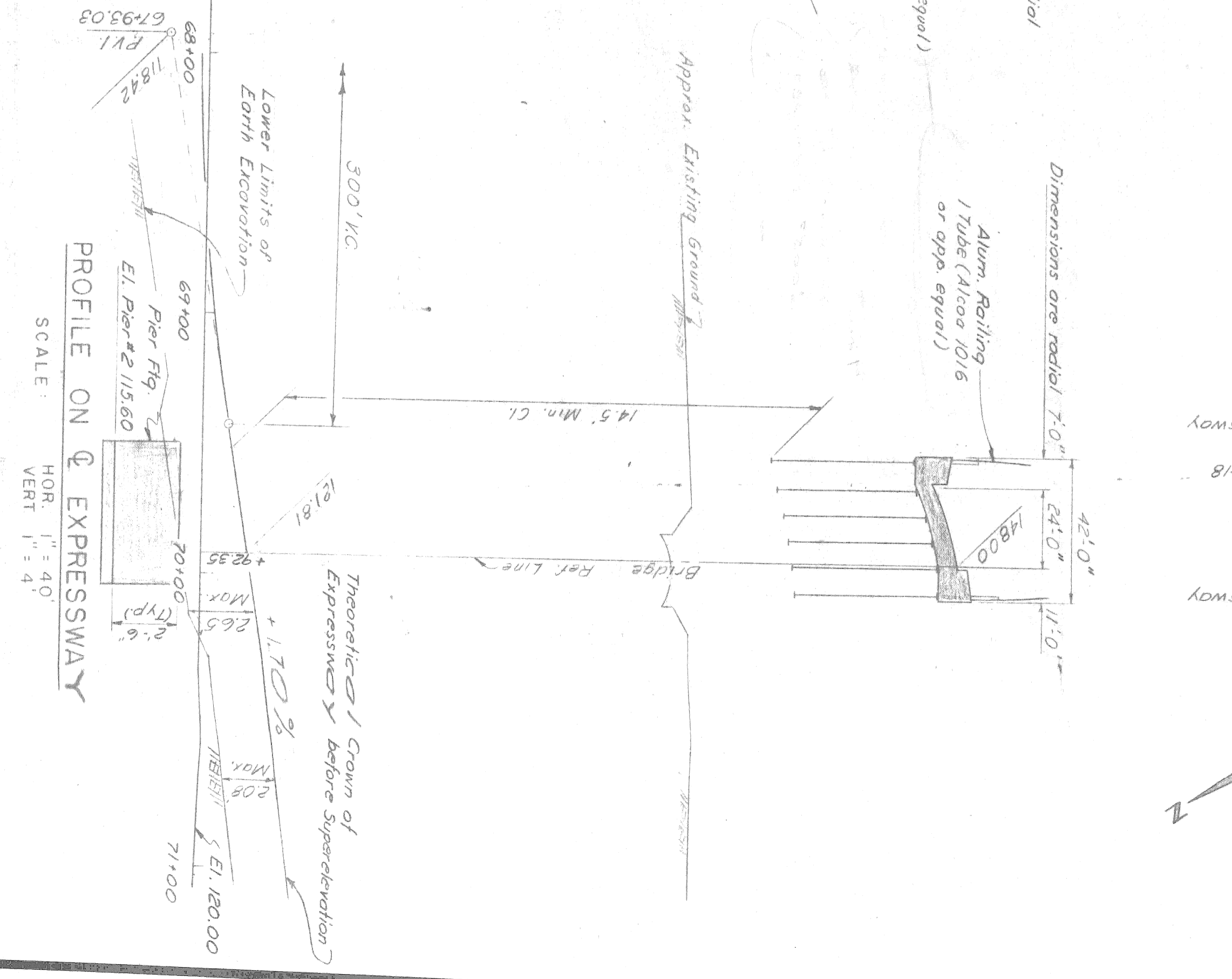
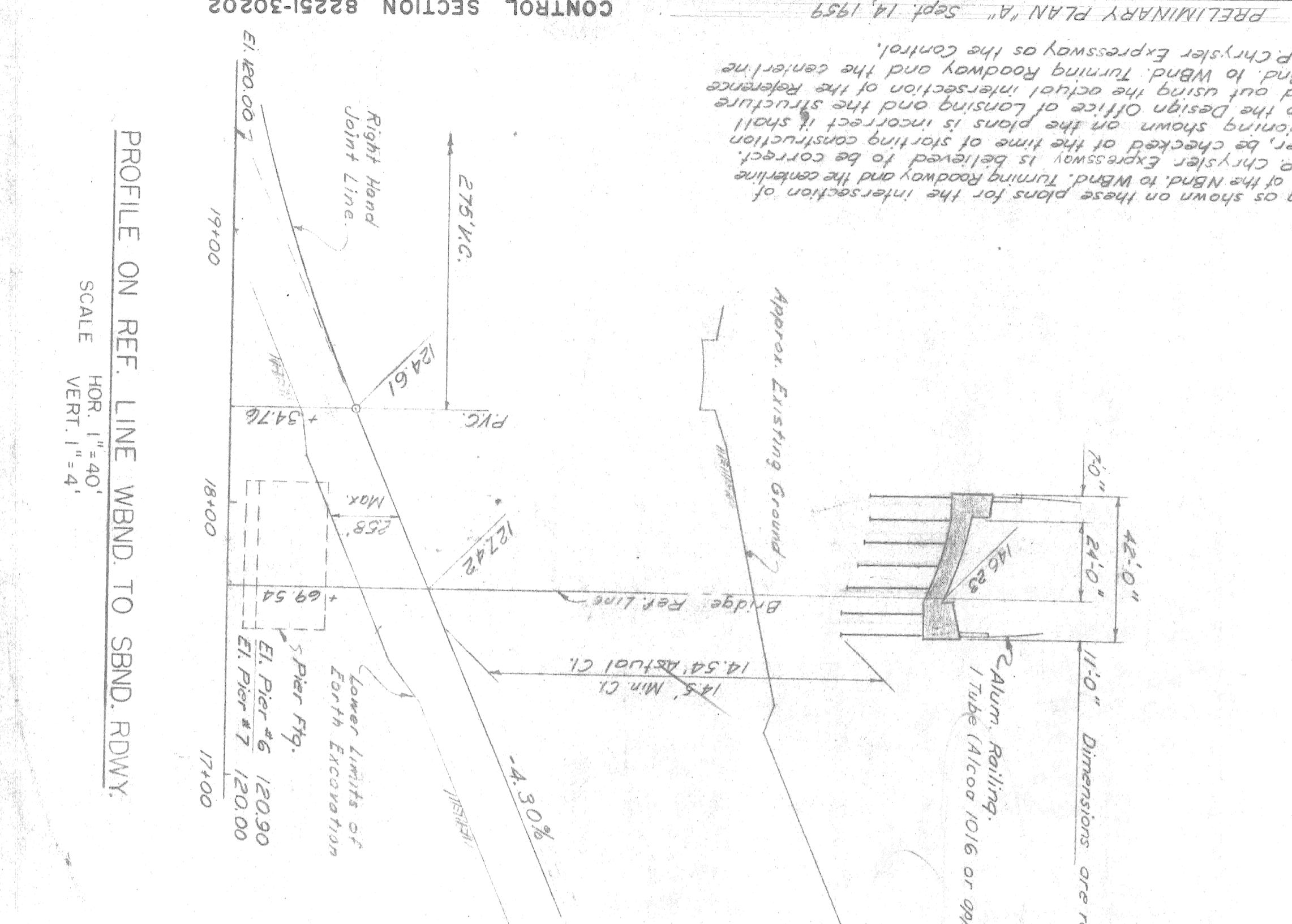
BIA OF 82-22-18

PRELIMINARY PLAN "A" - Sept. 14, 1959

CONTROL SECTION 82251-30202

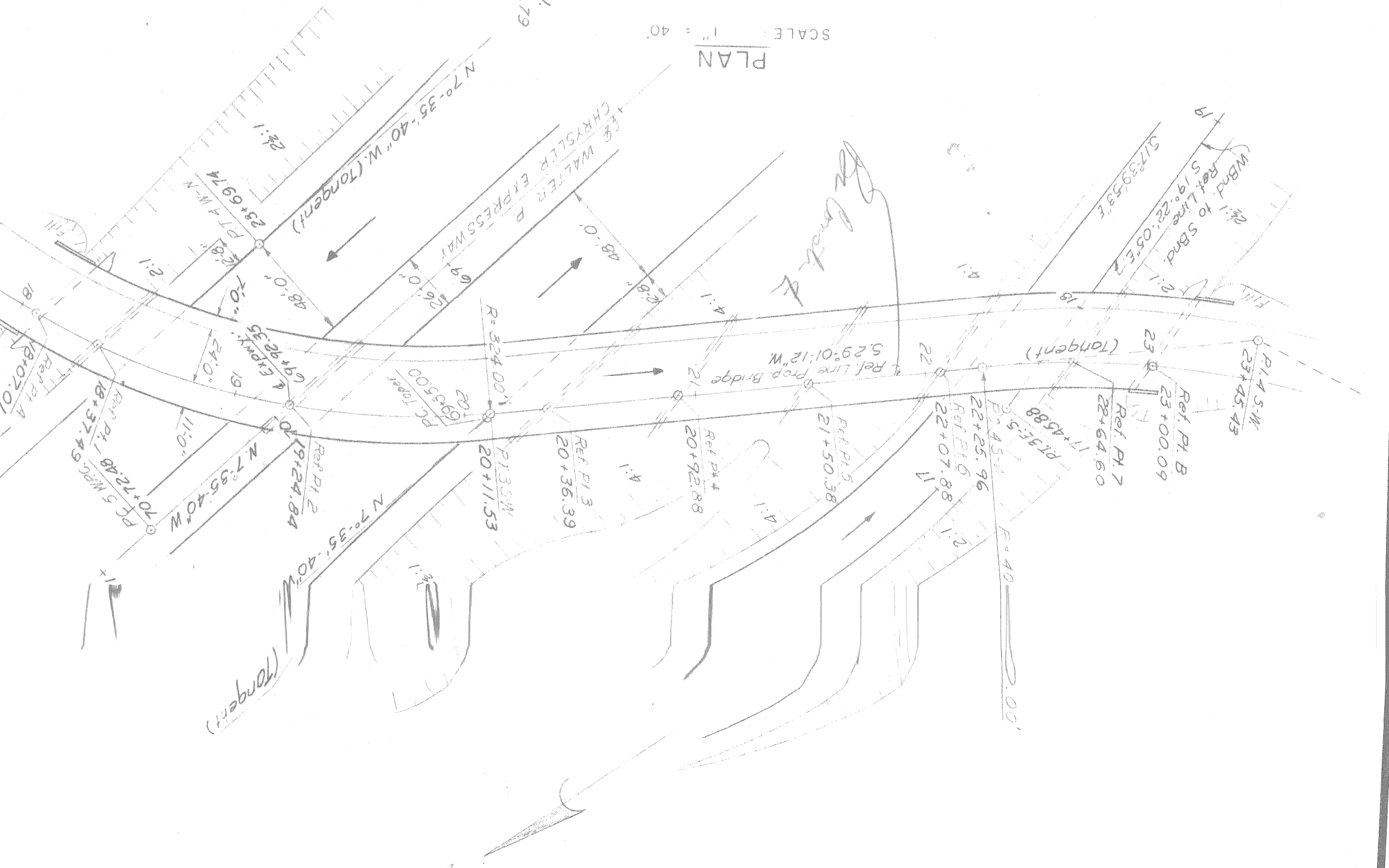
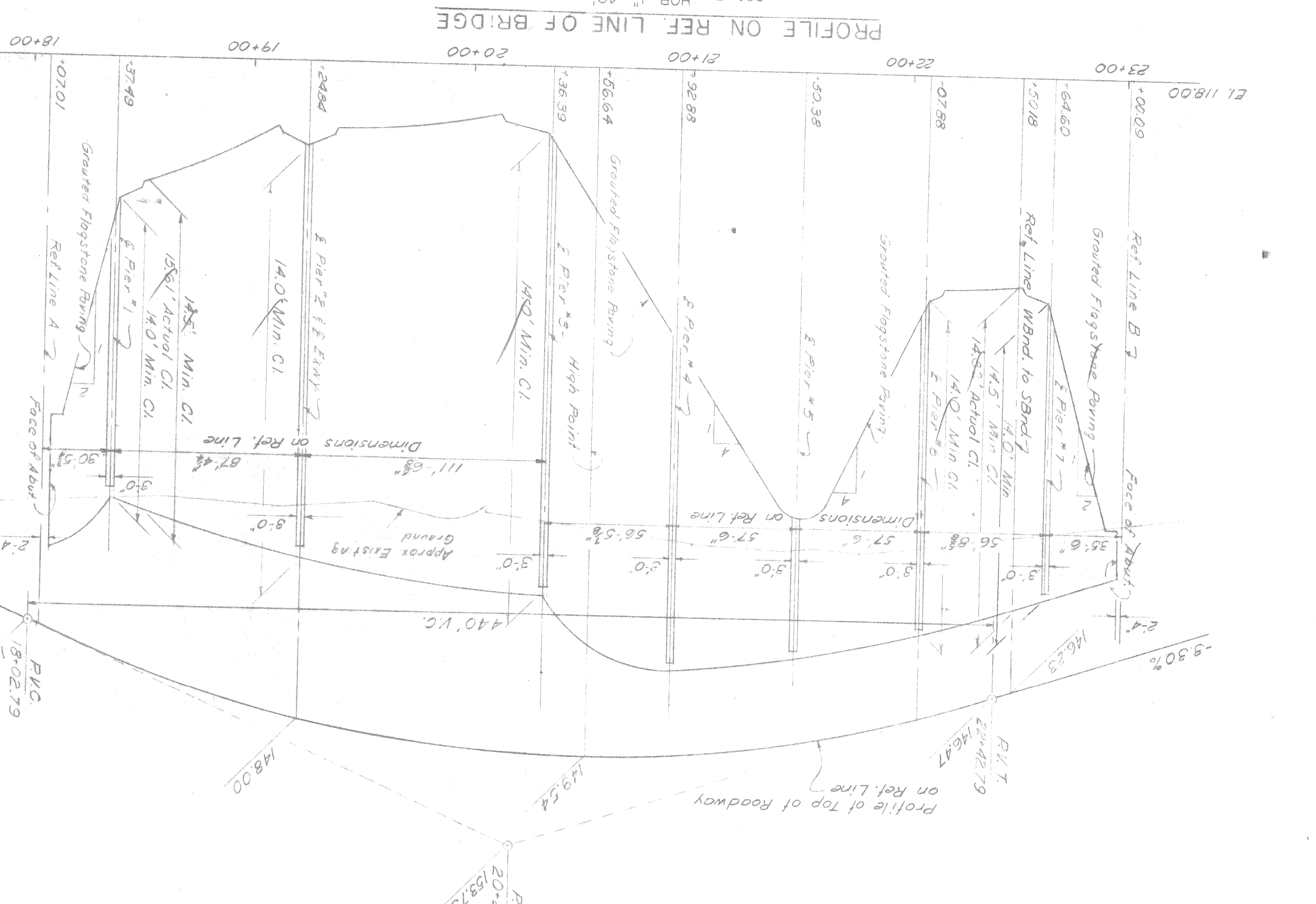
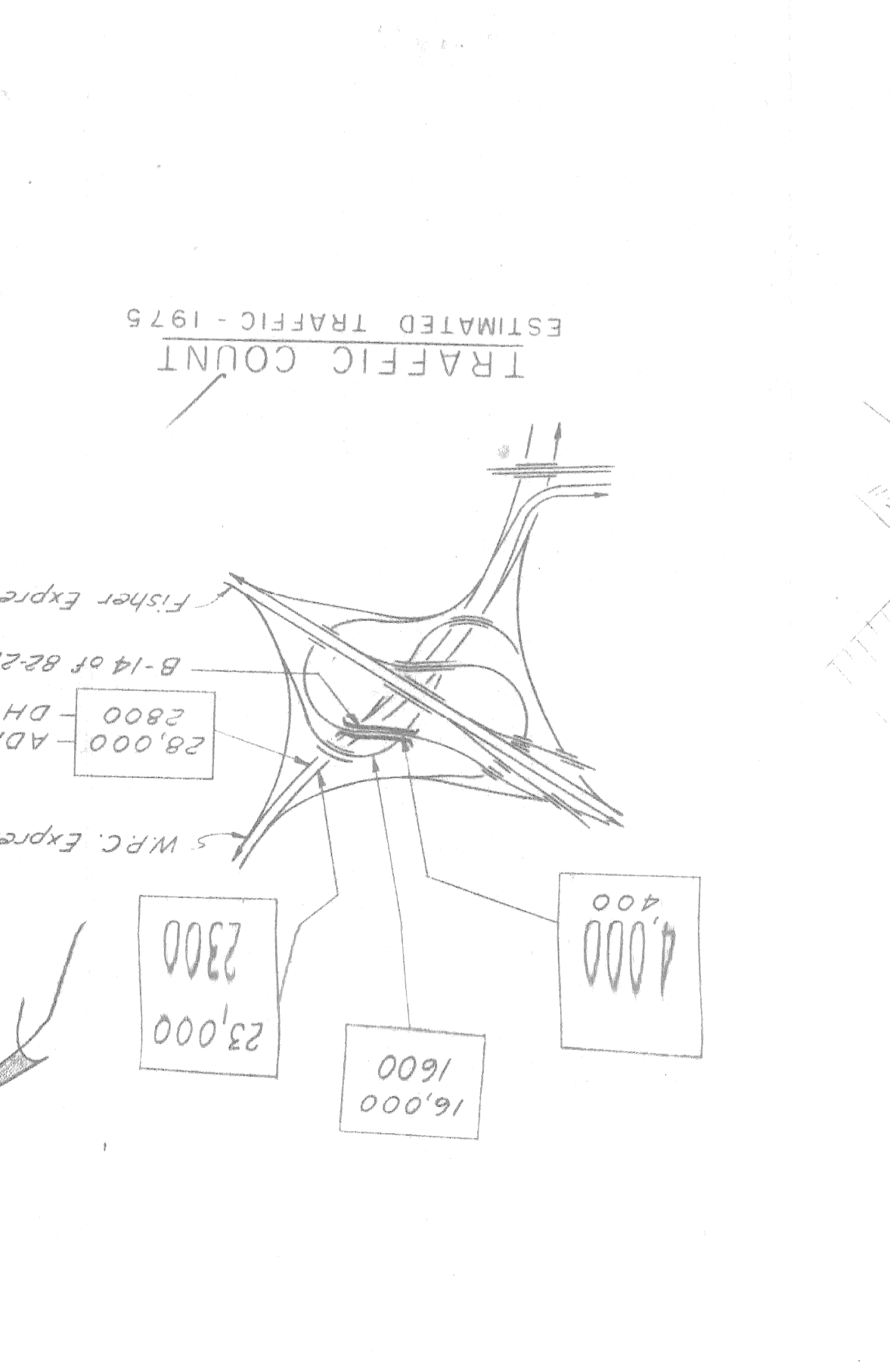
Work this sheet with Sheet #4

Note: The indicated slopes are normal to roadway shoulder line. Substructure dimensions are perpendicular to the substructure line.



Note: The stationing as shown on these plans for the intersection of the Reference Line of the Nbd. to Wbnd. Turning Roadway and the centerline of the Walter P. Chrysler Expressway is believed to be correct. It shall, however, be checked at the time of starting construction and if the stationing shown on the plans is incorrect it shall be reported to the Design Office of Lansing and the structure shall be staked out using the actual intersection of the Reference Line of the Nbd. to Wbnd. Turning Roadway and the centerline of the Walter P. Chrysler Expressway as the control.

PRELIMINARY PLAN "A" - Sept. 14, 1959



Scale: HOR. 1" = 40', VERT. 1" = 4'

Profile on Ref. Line of Bridge

Profile of Top of Roadway on Ref. Line

Face of Abut.

Dimensions on Ref. Line

Approx. Existing Ground

Profile of Top of Roadway

Profile of Top of Roadway on Ref. Line

Face of Abut.

Dimensions on Ref. Line

Approx. Existing Ground

Profile of Top of Roadway

Profile of Top of Roadway on Ref. Line

Face of Abut.

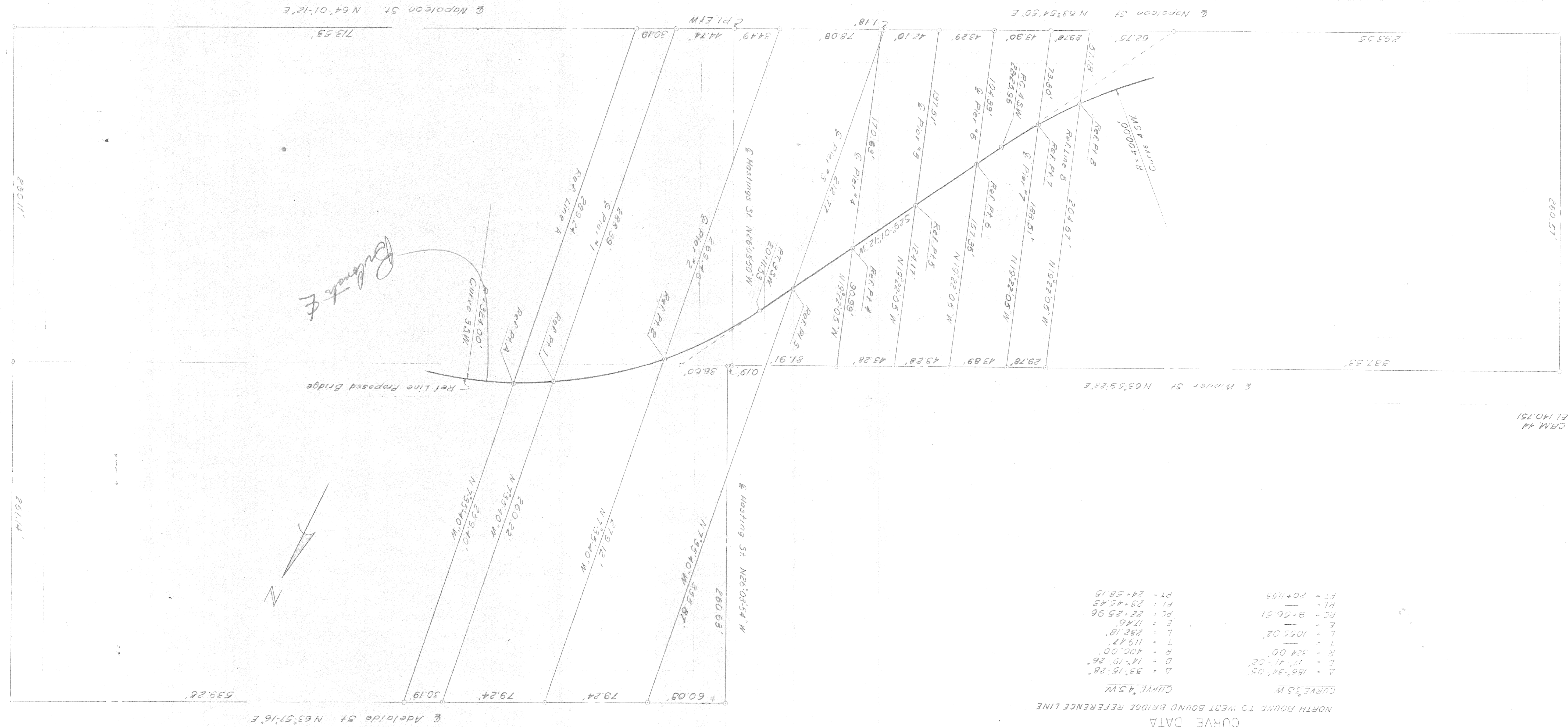
Dimensions on Ref. Line

Approx. Existing Ground

CURVE DATA
NORTH BOUND TO WEST BOUND BRIDGE REFERENCE LINE

Δ	= 186°54'05"
D	= 17°41'02"
R	= 324.00'
L	= 1055.02'
E	= 1746'
PC	= 82+25.96
PI	= 23+45.45
PT	= 24+58.15
Δ	= 93°15'28"
D	= 14°19'26"
R	= 400.00'
L	= 119.17'
T	= 232.18'
E	= 1746'

CURVE 3.5W
CURVE 4.5W



CBM-60
E1 139.892

NOTE
 CBM denotes construction bench mark
 P.B.M denotes permanent bench mark
 Indicates reference points or points of intersection

CBM-44 Aron on hydrant NW corner St Antoine and Winder
 E1x 143.75'
 CBM-46 Aron on hydrant NE corner Rivard and Winder
 E1x 144.48'
 CBM-47 Aron on hydrant NE corner Rivard and Napoleon
 E1x 142.568'
 CBM-60 Aron on hydrant ST corner St Antoine and Napoleon
 E1x 139.892'
 P.B.M.39-250 City of Detroit monument NE corner Hastings and Elizabeth
 E1x 129.480'
 P.B.M.39-251A City of Detroit monument NW corner Rivard and Winder
 E1x 140.842'

ALIGNMENT DIAGRAM
 Not to Scale

Work this sheet with sheet 3

PRELIMINARY PLAN "A"
 Sept. 14, 1959
 CONTROL SECTION 82251-30202

PLANS PREPARED BY
 CITY OF DETROIT
 DEPARTMENT OF PUBLIC WORKS
 CITY ENGINEERS OFFICE
 BUREAU OF HIGHWAYS AND EXPRESSWAYS

RECOMMENDED FOR APPROVAL
 St. Assoc. Engr.-Design.
 JOB NO. PW897B(2)

NO.	DESCRIPTION	DATE	BY

APPROVED _____ COORDINATING ENGINEER
 APPROVED _____ ENGINEER OF DESIGN-CONSULTANTS

B14 OF 82-22-18

MICHIGAN STATE HIGHWAY DEPARTMENT
 ALIGNMENT DIAGRAM

CHRYSLER-FISHER INTERCHANGE
 NORTH BND. TO WEST BND. TURNING ROADWAY CROSSING THE
 WALTER P. CHRYSLER EXPRESSWAY IN DETROIT

DATE	9-59
DRAWN BY	K.M.B.
CHECKED BY	O.G.L.
SHEET	9 OF 9

GENERAL NOTES
 The design of this structure is based on the M.S.H.D. Standard Specifications for the Design of Highway Bridges, 1958 Edition (H20-S16-44 and Alternate Military Loading).
 Live Load Impact Deflection = 1/1000 of Span Length.

MICHIGAN STATE HIGHWAY DEPARTMENT
CHRYSLER-FISHER INTERCHANGE
NORTH W. TURNING ROADWAY CROSSING THE
WALTER R. CHRYSLER EXPRESSWAY IN DETROIT
CITY OF DETROIT

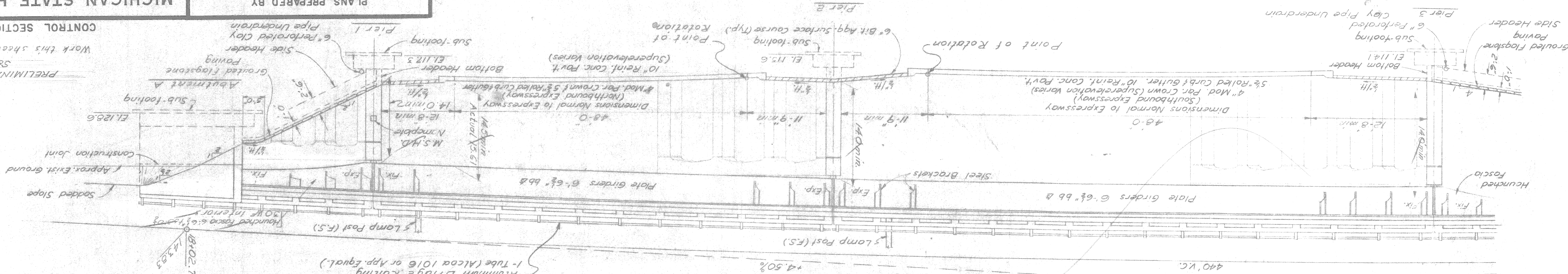
PLANS PREPARED BY
 DEPARTMENT OF PUBLIC WORKS
 CITY ENGINEERS OFFICE
 BUREAU OF HIGHWAYS AND EXPRESSWAYS
 JOB NO. PW897B(2)
 FOR APPROVAL
 RECOMMENDED
 REVISIONS

NO.	DESCRIPTION	DATE	BY

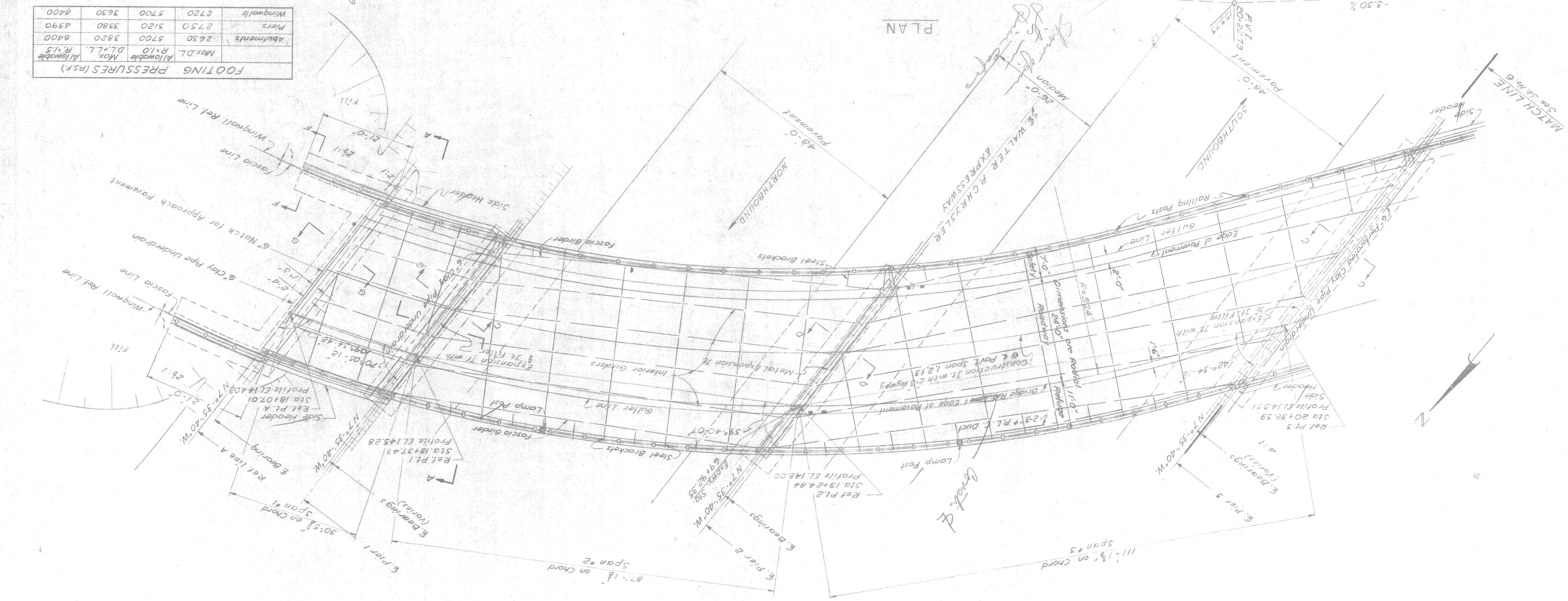
APPROVED
 COORDINATING ENGINEER
 ENGINEER OF DESIGN-CONSULTANTS

B14 OF 82-22-18

SOUTH ELEVATION



PLAN



FOOTING PRESSURES (P.S.F.)

Allowable	R=1.5	3820	8400
Max. D.L.	R=1.0	2630	5700
Abutments		2750	3120
Piers		2720	5700
Wingwalls		2730	3630
		3580	4390

MICHIGAN STATE HIGHWAY DEPARTMENT
 CHRYSLER-FISHER INTERCHANGE
 NORTH BND. TO WEST BND. TURNING EXPRESSWAY CROSSING THE
 BUREAU OF HIGHWAYS AND EXPRESSWAYS
 CITY ENGINEERS OFFICE
 DEPARTMENT OF PUBLIC WORKS
 CITY OF DETROIT

PLANS PREPARED BY
 J. R. K...
 J08 No. PW897B(2)

REVISIONS

APPROVED
 COORDINATING ENGINEER
 ENGINEER OF DESIGN - CONSULTANTS

APPROVED
 CITY OF DETROIT

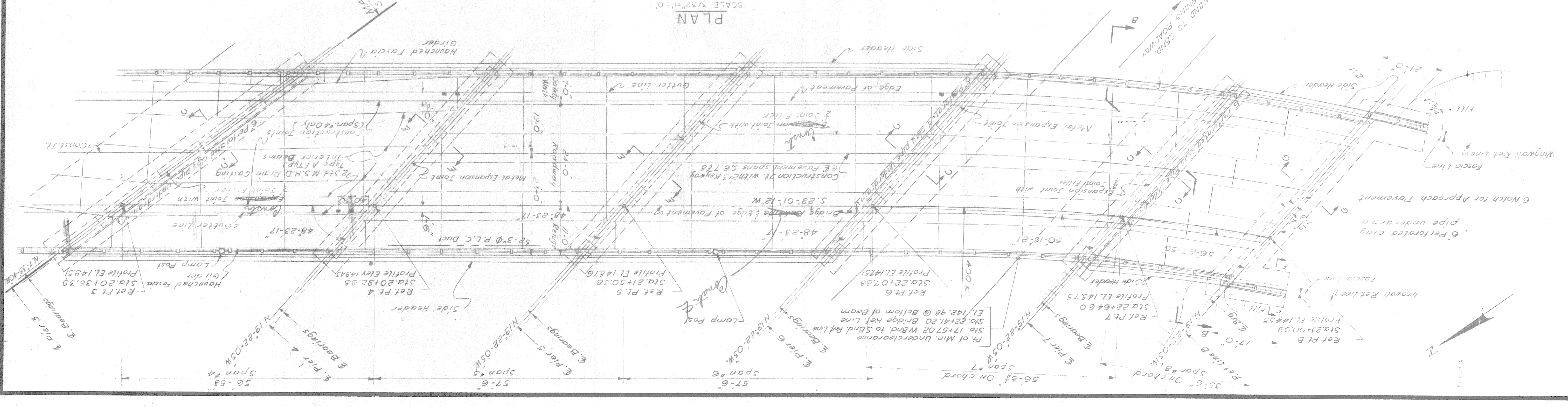
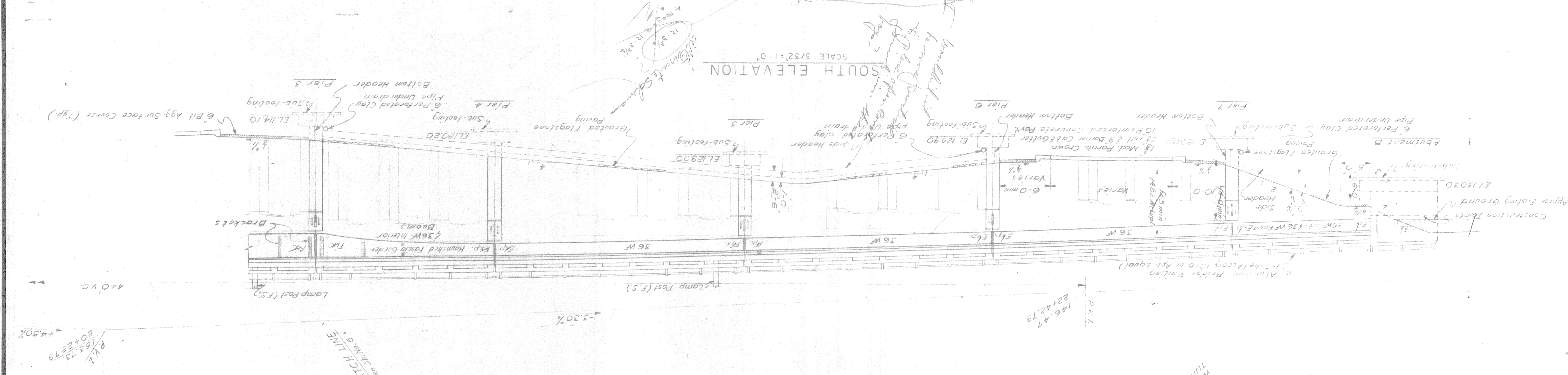
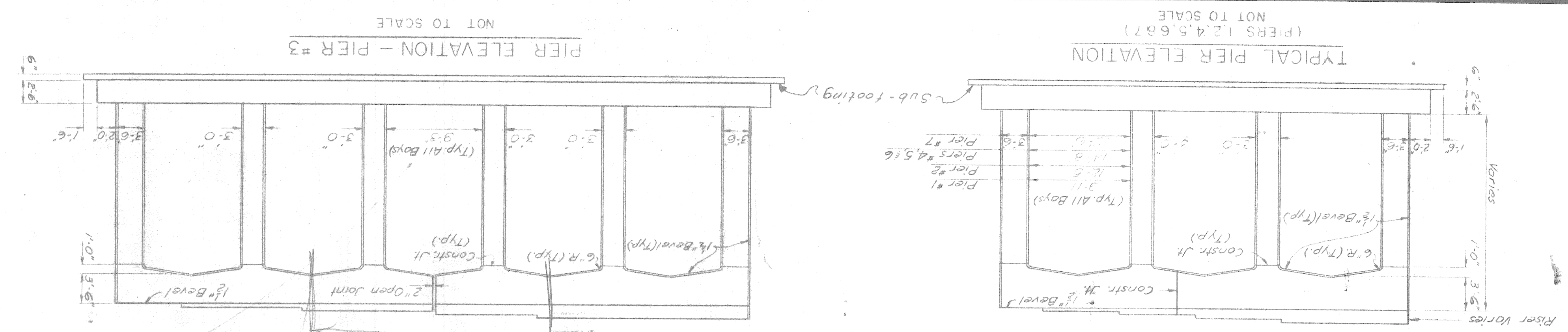
CHECKED BY
 DRAWN BY
 TRACED BY
 SHEET OF

B14 OF 82-22-18

PRELIMINARY PLAN "A"
 Sept 18, 1959
 CONTROL SECTION 82251-30202

NO.	DATE	BY	DESCRIPTION

NOT TO SCALE



WIND TO SAND TURNING ROADWAY

Ret Pt. A
 Profile EL 143.51
 Station 20+36.39
 Hatched fascia girder
 Lamp Post

Ret Pt. B
 Profile EL 144.58
 Station 23+00.09

Ret Pt. C
 Profile EL 145.75
 Station 22+64.60

Ret Pt. D
 Profile EL 147.15
 Station 22+07.88

Ret Pt. E
 Profile EL 148.79
 Station 22+07.88

Ret Pt. F
 Profile EL 148.79
 Station 22+07.88

Ret Pt. G
 Profile EL 148.79
 Station 22+07.88

Ret Pt. H
 Profile EL 148.79
 Station 22+07.88

Ret Pt. I
 Profile EL 148.79
 Station 22+07.88

Ret Pt. J
 Profile EL 148.79
 Station 22+07.88

Ret Pt. K
 Profile EL 148.79
 Station 22+07.88

Ret Pt. L
 Profile EL 148.79
 Station 22+07.88

Ret Pt. M
 Profile EL 148.79
 Station 22+07.88

Ret Pt. N
 Profile EL 148.79
 Station 22+07.88

Ret Pt. O
 Profile EL 148.79
 Station 22+07.88

Ret Pt. P
 Profile EL 148.79
 Station 22+07.88

Ret Pt. Q
 Profile EL 148.79
 Station 22+07.88

Ret Pt. R
 Profile EL 148.79
 Station 22+07.88

Ret Pt. S
 Profile EL 148.79
 Station 22+07.88

Ret Pt. T
 Profile EL 148.79
 Station 22+07.88

Ret Pt. U
 Profile EL 148.79
 Station 22+07.88

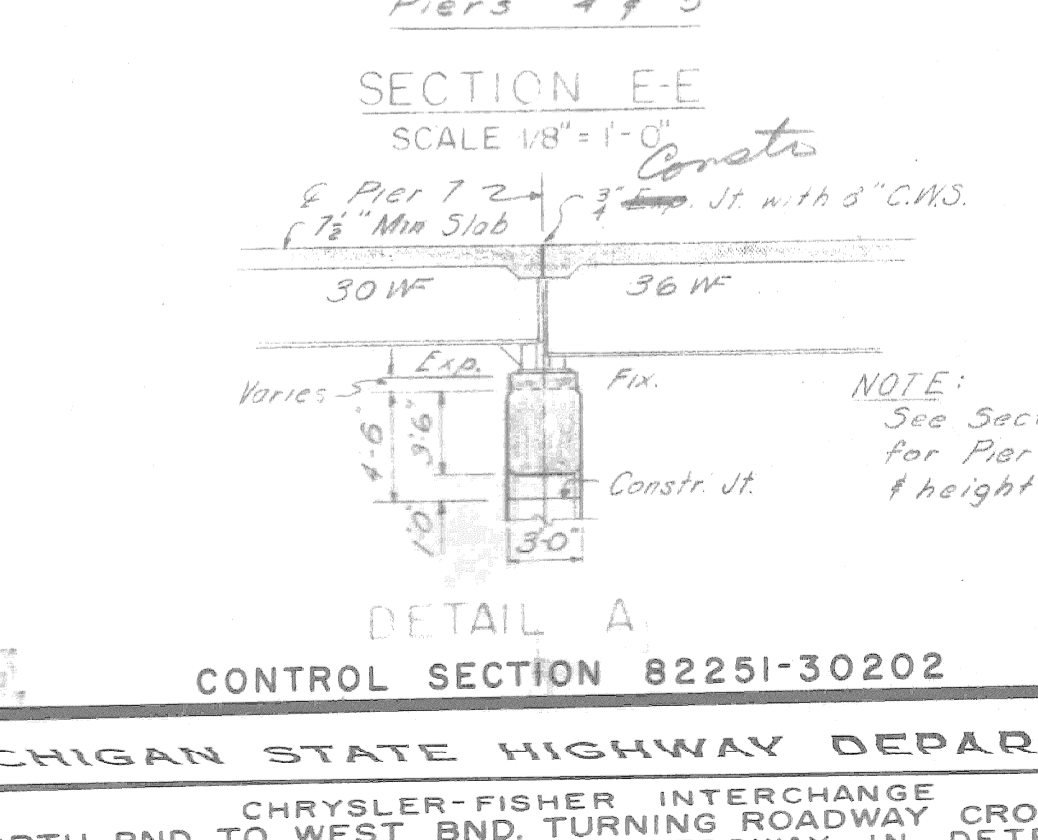
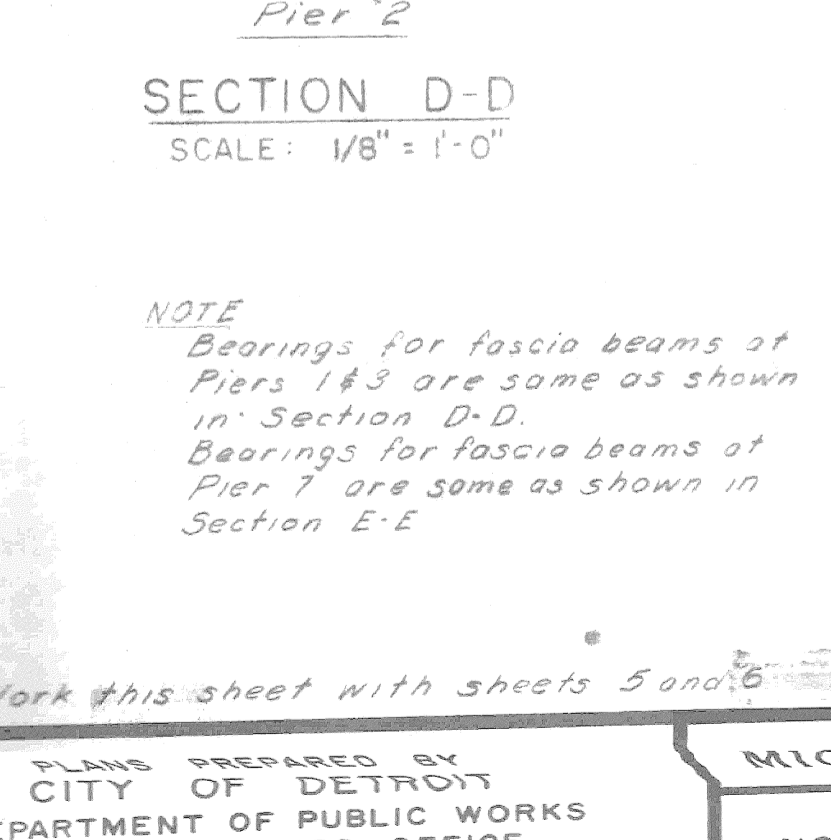
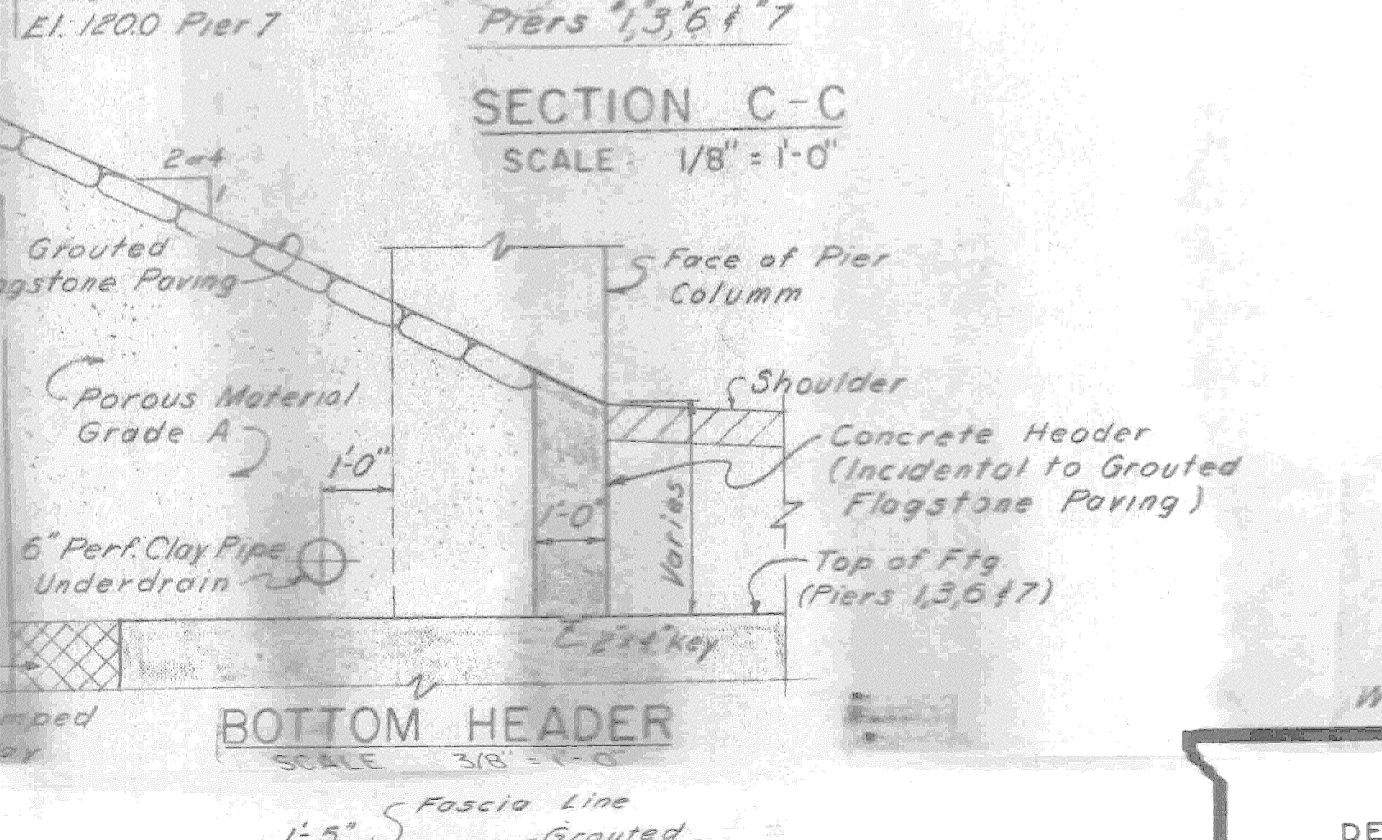
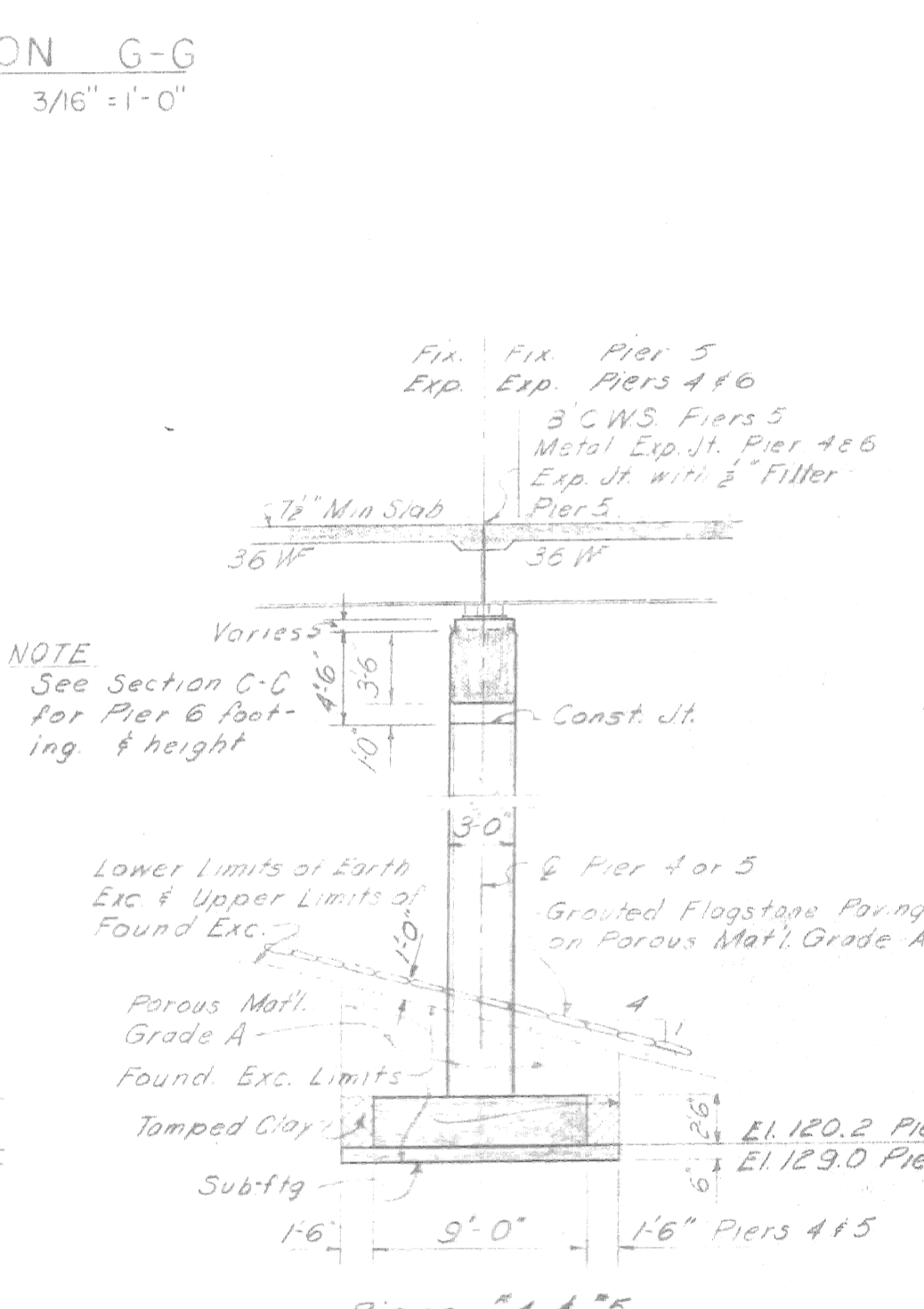
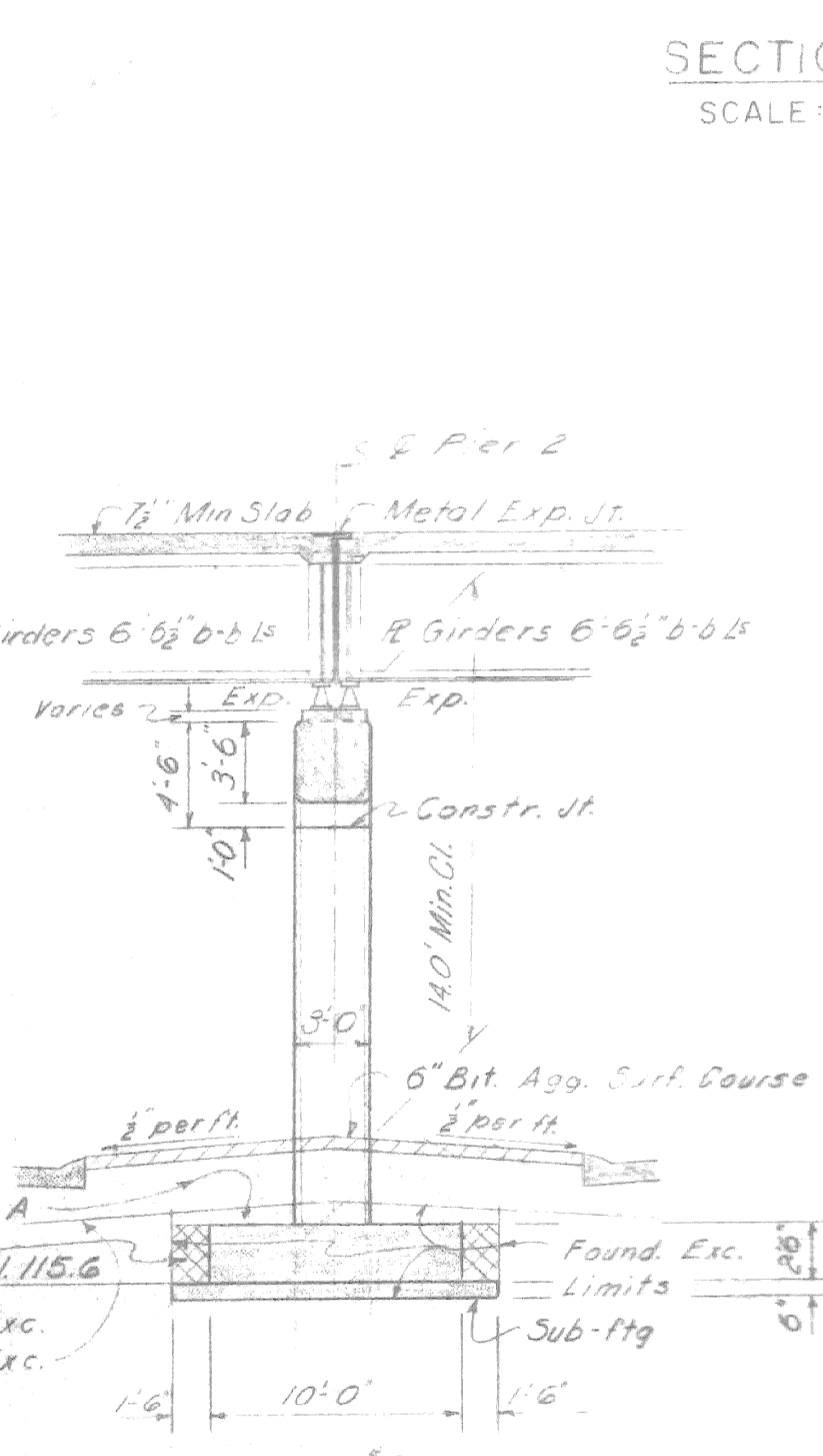
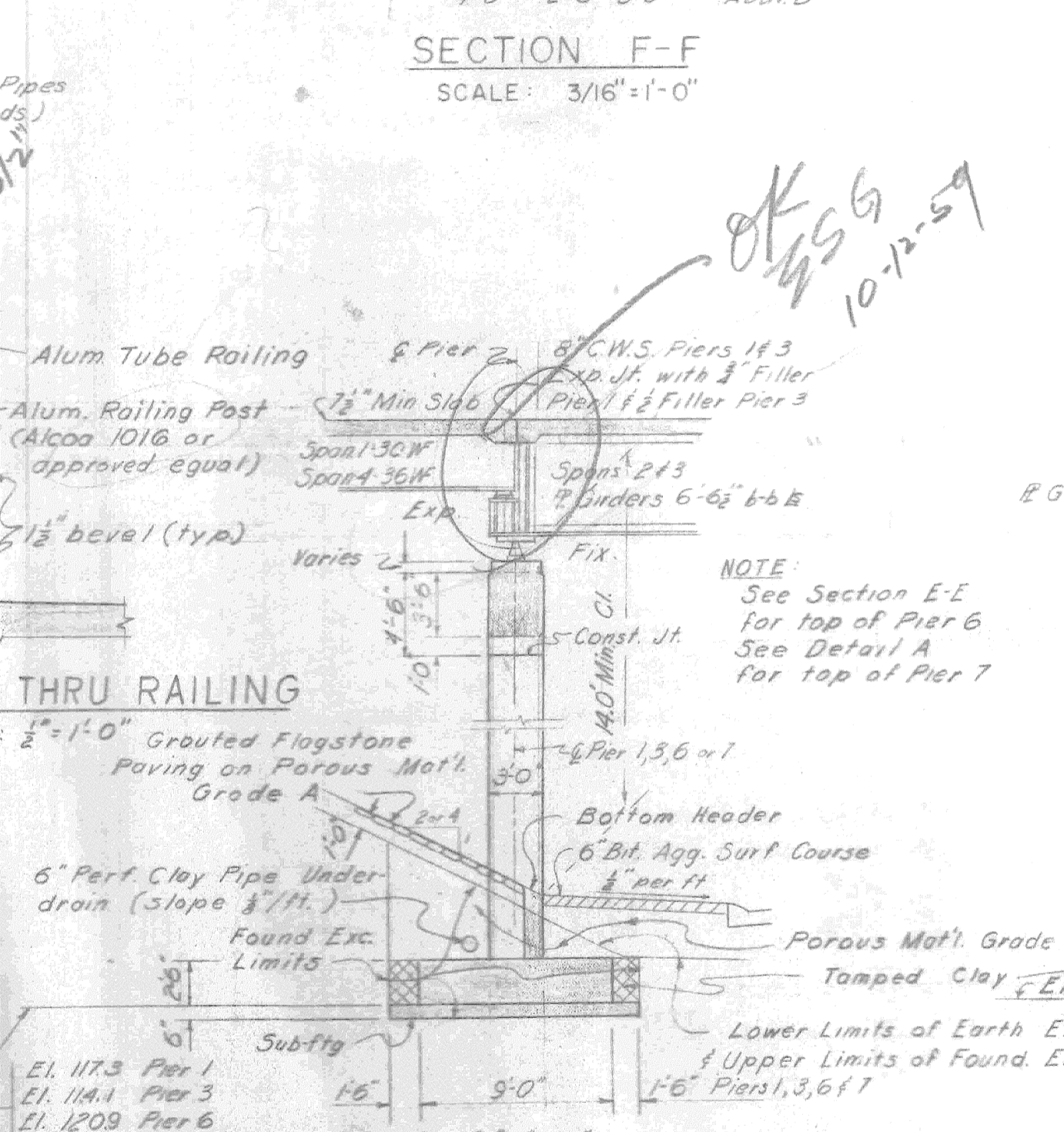
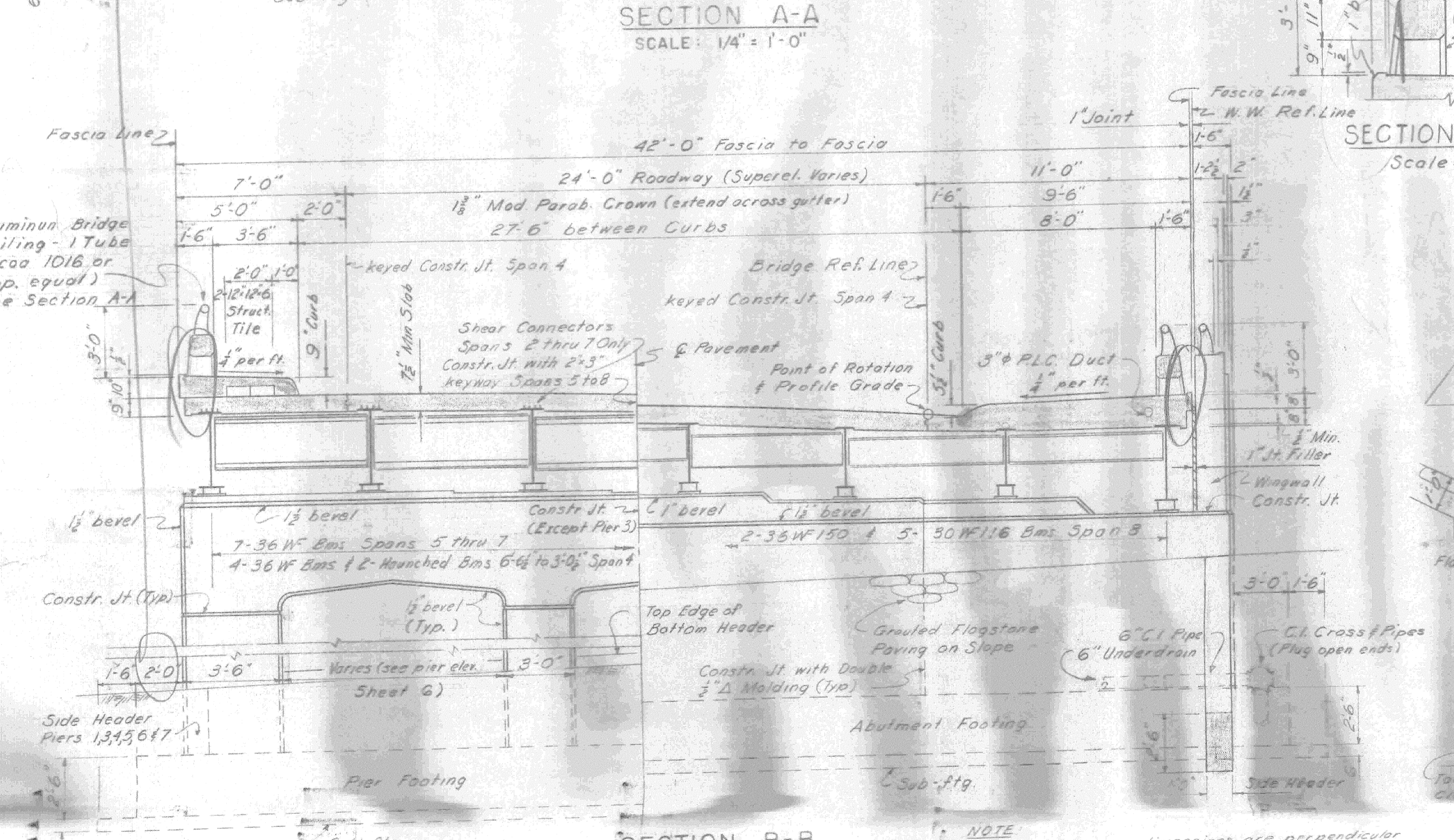
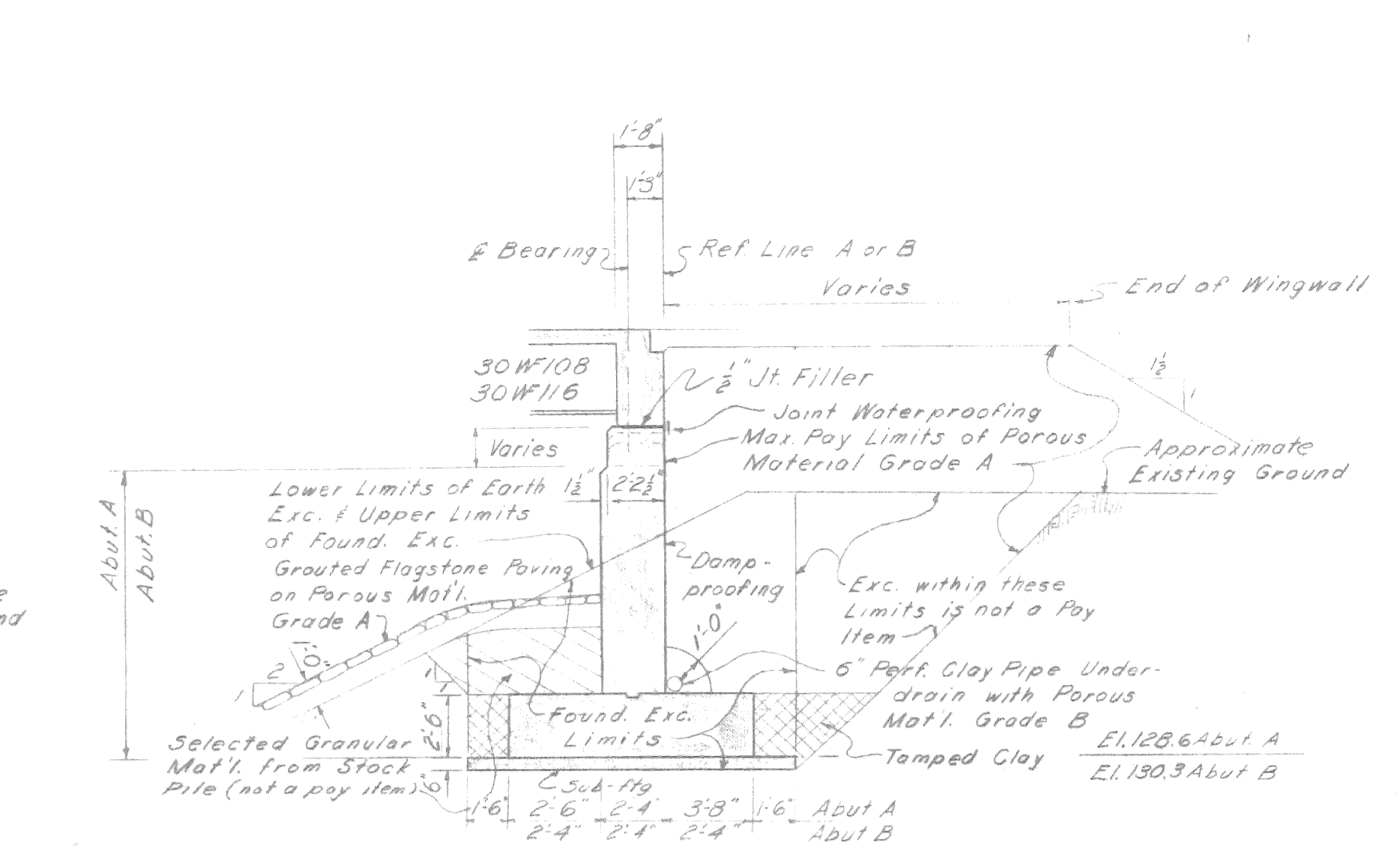
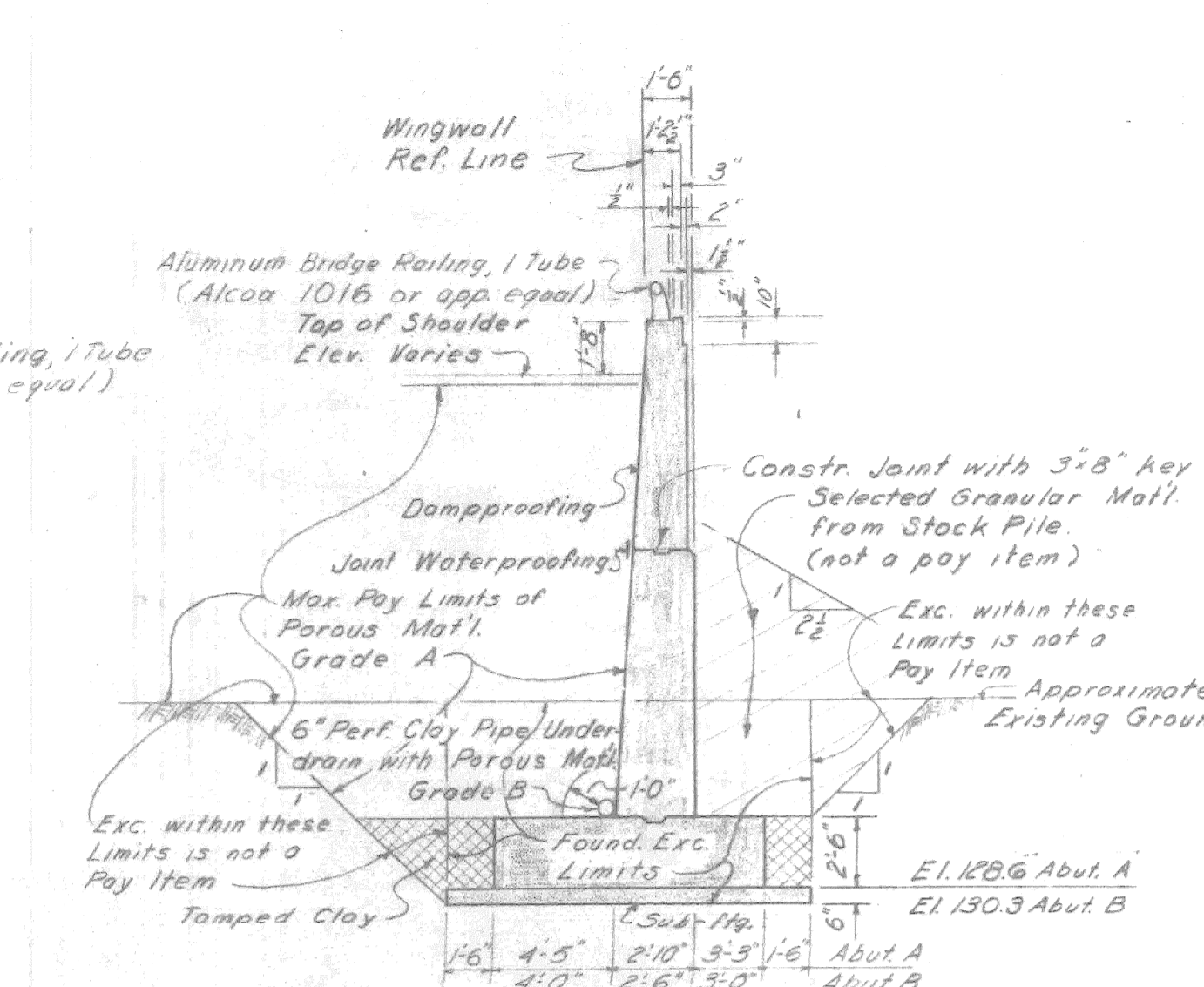
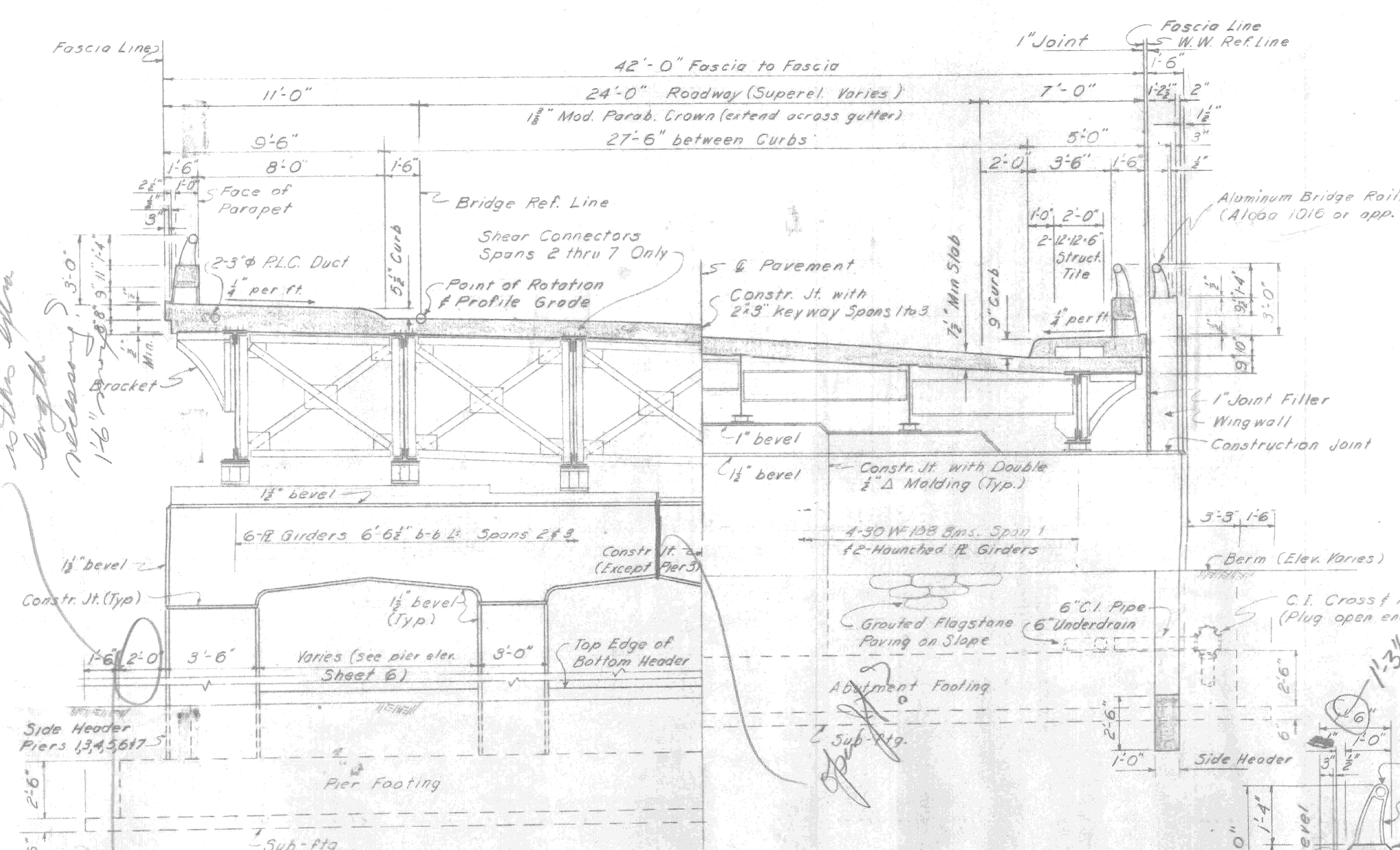
Ret Pt. V
 Profile EL 148.79
 Station 22+07.88

Ret Pt. W
 Profile EL 148.79
 Station 22+07.88

Ret Pt. X
 Profile EL 148.79
 Station 22+07.88

Ret Pt. Y
 Profile EL 148.79
 Station 22+07.88

Ret Pt. Z
 Profile EL 148.79
 Station 22+07.88



NOTE
Superstructure dimensions are perpendicular to the bridge reference line and are not to be used for the design of the substructure.

NOTE
See Section E-E for top of Pier 6. See Detail A for top of Pier 7.

NOTE
Bearings for fascia beams at Piers 1 & 3 are some as shown in Section D-D. Bearings for fascia beams of Pier 7 are some as shown in Section E-E.

Work this sheet with sheets 5 and 6.

PLANS PREPARED BY
CITY OF DETROIT
DEPARTMENT OF PUBLIC WORKS
CITY ENGINEERS OFFICE
BUREAU OF HIGHWAYS AND EXPRESSWAYS

MICHIGAN STATE HIGHWAY DEPARTMENT
CHRYSLER-FISHER INTERCHANGE
NORTH END TO WEST END TURNING ROADWAY CROSSING THE
WALTER P. CHRYSLER EXPRESSWAY IN DETROIT
GENERAL PLAN OF STRUCTURE

APPROVED: [Signature] ENGINEER OF DESIGN-CONSULTANTS

APPROVED: [Signature] COORDINATING ENGINEER

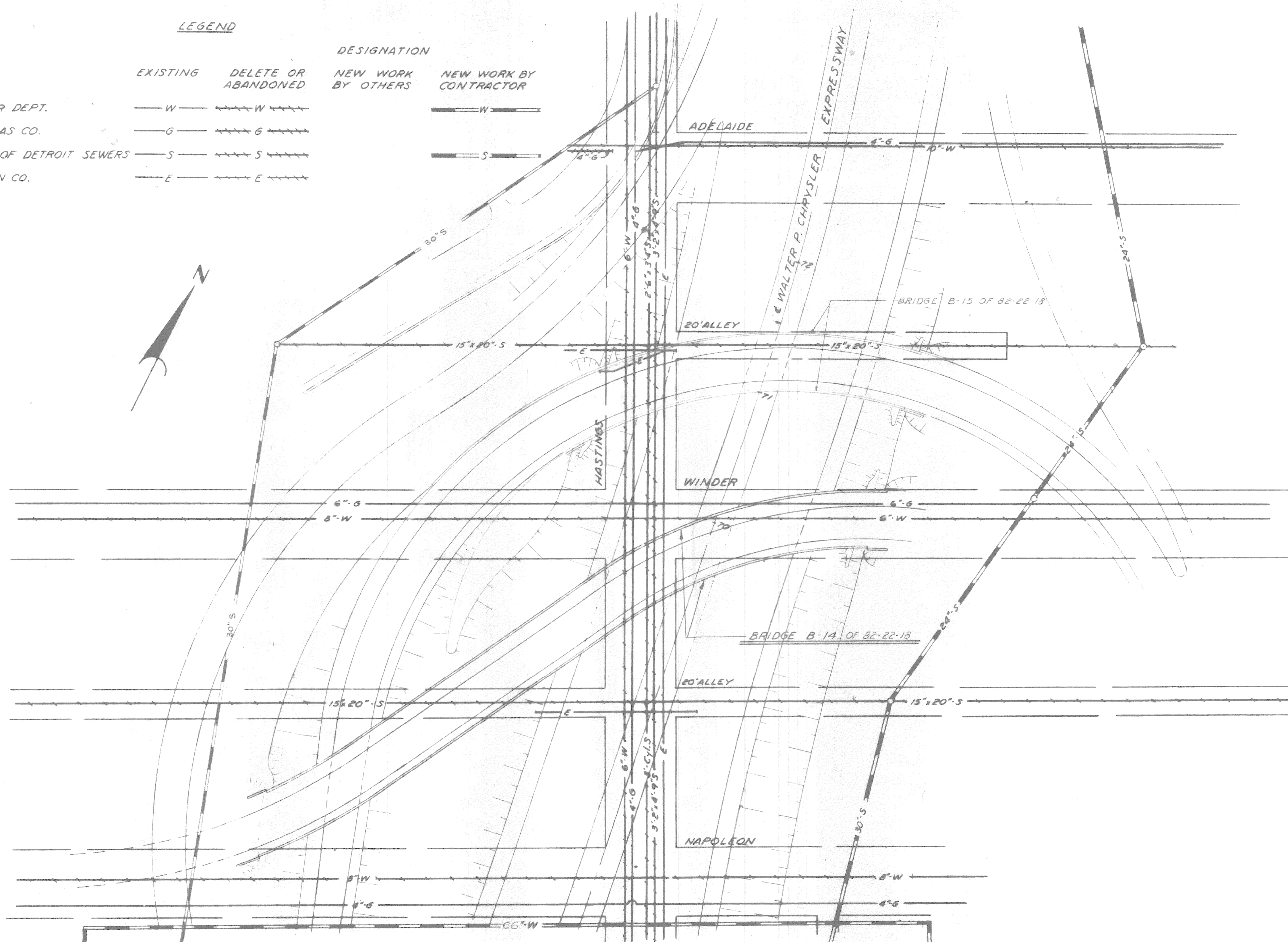
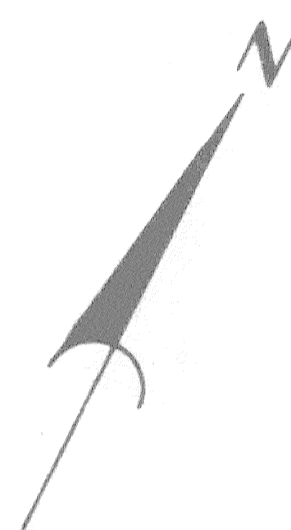
APPROVED: [Signature] ENGINEER OF DESIGN-CONSULTANTS

JOB No. PW897B(2)
B14 OF 82-22-15

UTILITY

LEGEND

UTILITY	EXISTING	DELETE OR ABANDONED	DESIGNATION	NEW WORK BY OTHERS	NEW WORK BY CONTRACTOR
DETROIT WATER DEPT.	—W—	---W---	NEW WORK BY OTHERS	—W—	---W---
MICH. CONS. GAS CO.	—G—	---G---	NEW WORK BY OTHERS	—G—	---G---
EXPWY & CITY OF DETROIT SEWERS	—S—	---S---	NEW WORK BY OTHERS	—S—	---S---
DETROIT EDISON CO.	—E—	---E---	NEW WORK BY OTHERS	—E—	---E---



SITUATION PLAN
SCALE: 1" = 40'

Bridge Pier Footings and utility alterations are included in package contract for Control Section 82251-30202

PRELIMINARY PLAN "A"
Sept. 14, 1959
CONTROL SECTION 82251-30202

MICHIGAN STATE HIGHWAY DEPARTMENT

CHRYSLER-FISHER INTERCHANGE
NORTHBOUND TO WEST BND. TURNING ROADWAY CROSSING THE
WALTER P. CHRYSLER EXPRESSWAY IN DETROIT
EXISTING UTILITIES AND
PROPOSED ALTERATIONS

PLANS PREPARED BY
CITY OF DETROIT
DEPARTMENT OF PUBLIC WORKS
CITY ENGINEERS OFFICE
BUREAU OF HIGHWAYS AND EXPRESSWAYS

RECOMMENDED FOR APPROVAL
A. H. Heister
Sr. Assoc. Engr. - Design

JOB No.
PW897B(2)

NO.	DESCRIPTION	DATE	BY

DATE	BY

B14 OF 82-22-18