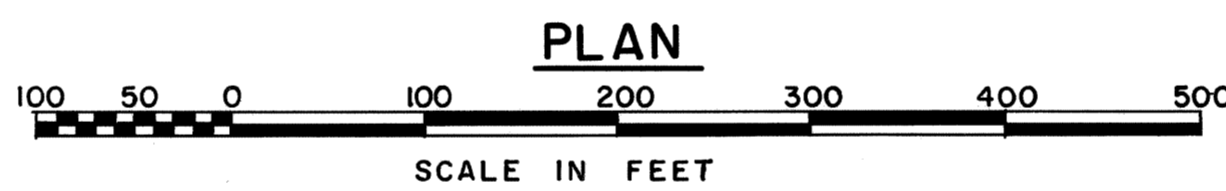
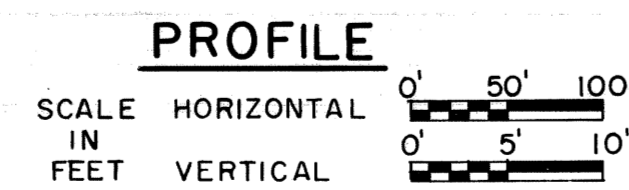
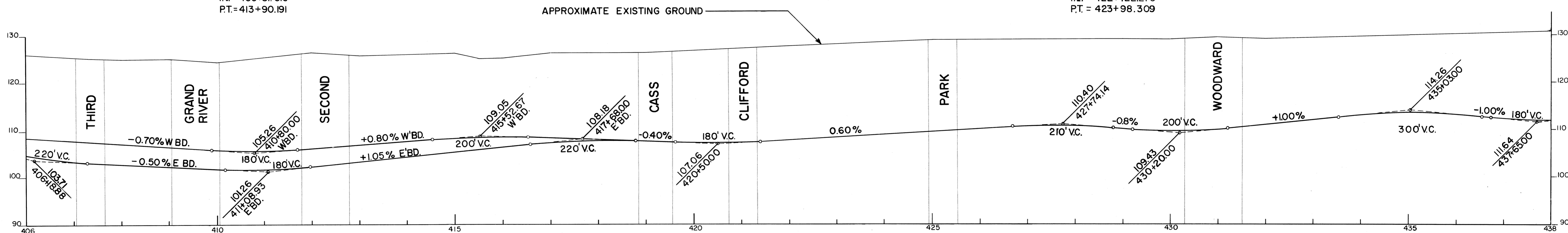


CURVE DATA
 $\Delta = 24^{\circ}-56'-01''$
 $D = 3^{\circ}-00'-00''$
 $R = 1909.859'$
 $T = 422.245'$
 $L = 831.120'$
 $E = 46.120'$
 $PC = 405+59.071$
 $PI = 409+81.316$
 $PT = 413+90.191$



CURVE DATA
 $\Delta = 11^{\circ}11'-52''$
 $D = 3^{\circ}-00'-00''$
 $R = 1909.859'$
 $T = 187.226'$
 $L = 373.259'$
 $E = 9.155'$
 $PC = 420+25.050$
 $PI = 422+122.276$
 $PT = 423+98.309$



SQUAD LEADER	DATE
DRAWN BY <i>Bob Cochran</i>	3-12-65
CHECKED BY	
CORRECT	

CITY OF DETROIT
 DEPARTMENT OF PUBLIC WORKS
 CITY ENGINEERS OFFICE
 BUREAU OF HIGHWAYS AND EXPRESSWAYS

APPROVED	MICHIGAN STATE HIGHWAY DEPARTMENT	APPROVED
I-75 FISHER FREEWAY		
THIRD AVE. TO JOHN R ST.		
ISSUE NO. 1	DATE 2-65	
CITY JOB 1002(2)	SHEET NO. 131	
STATE PROJECT 82195D		

FILE NO. 1002(2)	FEDERAL PROJECT NO.	SHEET NO.
---------------------	---------------------	-----------