

MICHIGAN DEPARTMENT OF STATE HIGHWAYS

STOUT AVE. PEDESTRIAN BRIDGE
OVER JEFFRIES FREEWAY IN DETROIT

GENERAL DRAWING

CITY OF DETROIT
SQUAD BOSS
DRAWN BY
TRACED BY
CHECKED BY
SHEET

APPROVED: DESIGN SUPERVISING ENGINEER
APPROVED: ASST. ENGINEER OF DESIGN

PO2 of 82122K

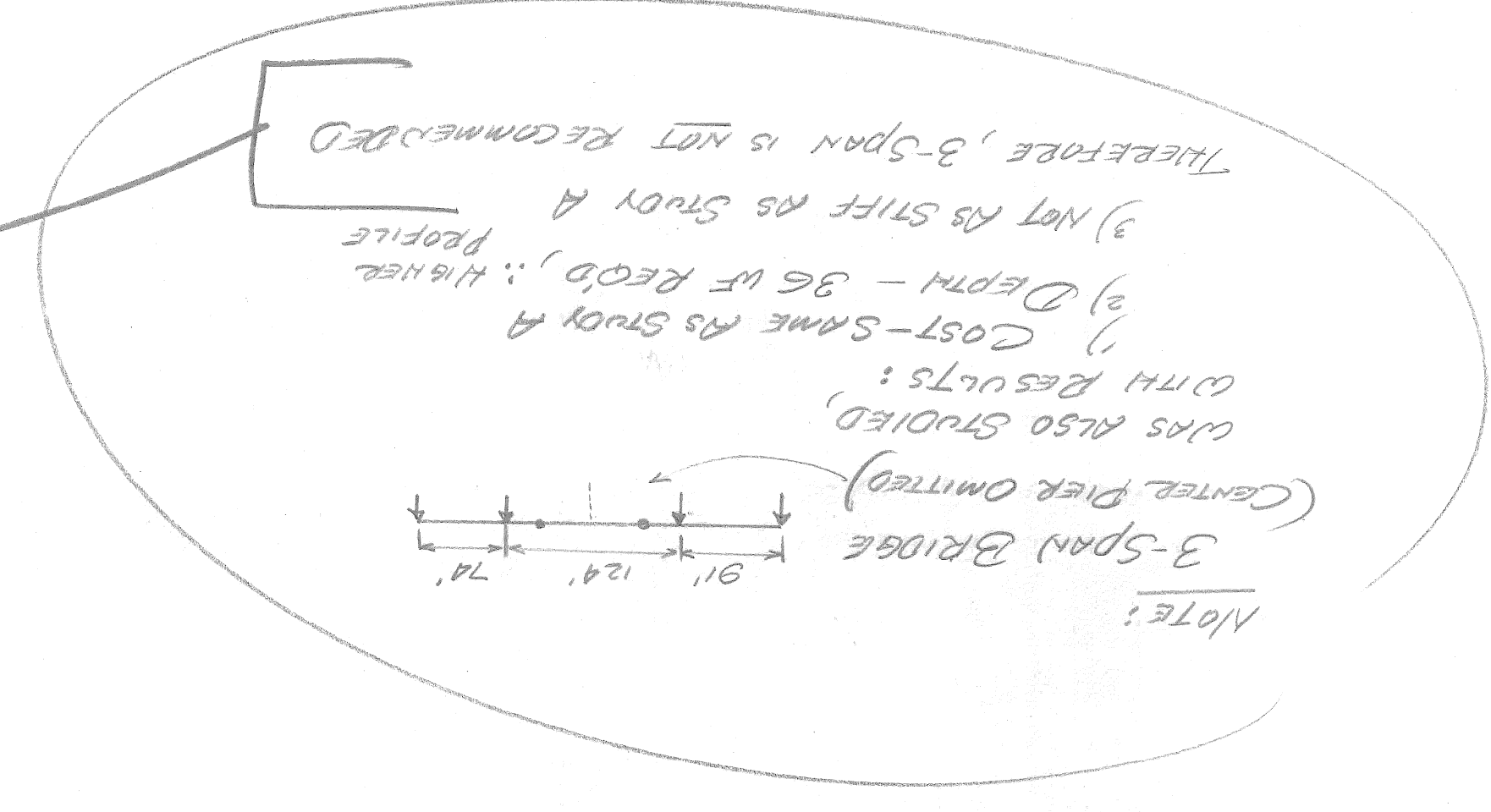
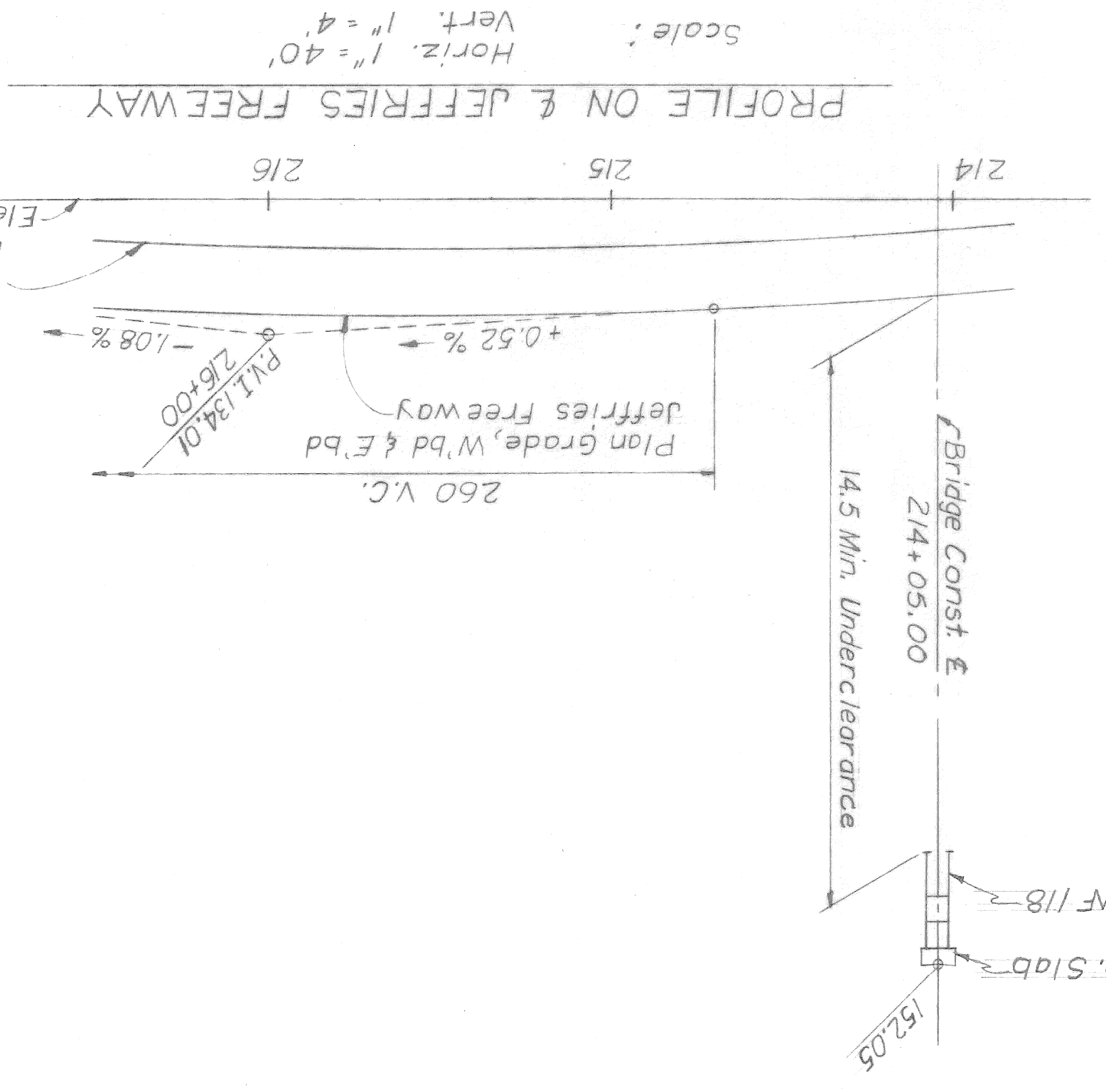
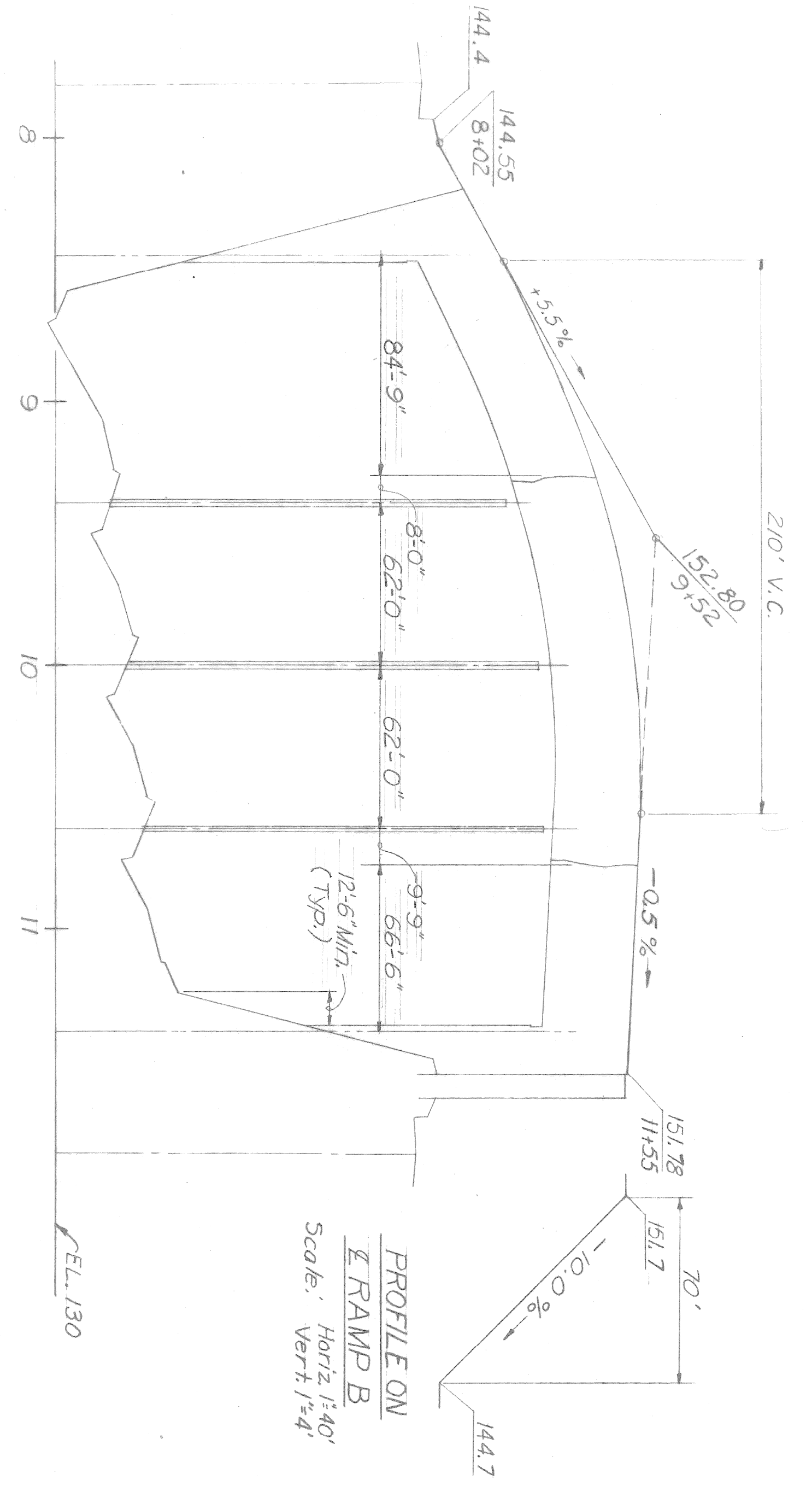
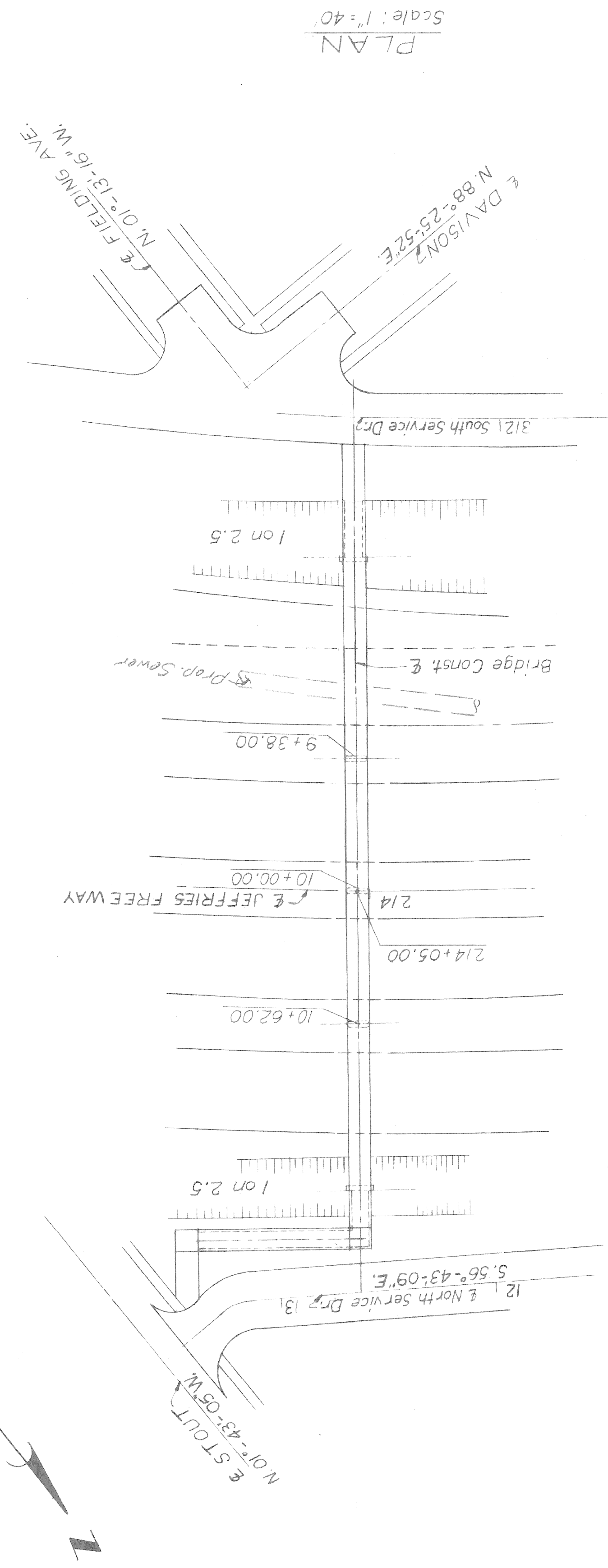
NO.	DATE	DESCRIPTION

APPROVED: STRUCTURAL ENGINEER

JOB NO.

PLANS PREPARED BY
CITY OF DETROIT
DEPARTMENT OF PUBLIC WORKS
CITY ENGINEERS OFFICE
BUREAU OF HIGHWAYS AND EXPRESSWAYS

STUDY A
4/30/69



Use Composite Pier
Use Center Pier
If it Designs It
Shift Enough.