

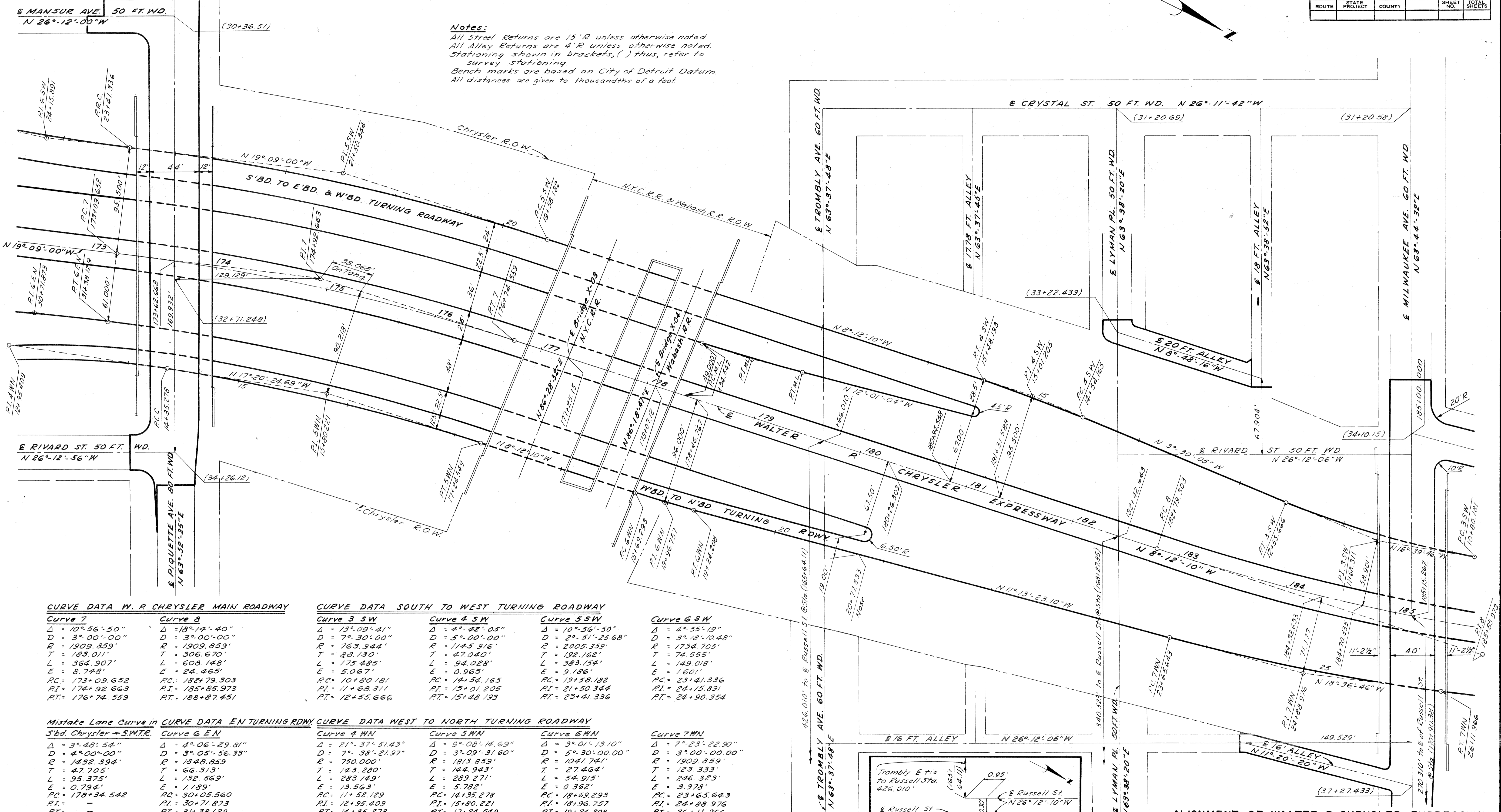
C.B.M.#151 Elev. 156.621 Arrow on Hydrant N.W. corner of Rivard St. and Piquette Ave. C.B.M.#153 Elev. 145.042 Arrow on Hydrant N.W. corner of Russell St. and Piquette Ave. C.B.M.#159 Elev. 154.591 Arrow on Hydrant N.E. corner of Russell St. and Trombly Ave. C.B.M.#155 Elev. 148.093 Arrow on Hydrant N. side of Milwaukee Ave., 300' E. of C.B.M. 154. C.B.M.#157 Elev. 153.502 Arrow on Hydrant N.W. corner of Russell St. and Milwaukee Ave.

C.B.M.#152 Elev. 155.134 Arrow on Hydrant S.E. corner of Rivard St. and Piquette Ave. C.B.M.#160 Elev. 145.043 Arrow on Hydrant E. side of Russell St., 238' N. of Piquette Ave. C.B.M.#158 Elev. 153.352 Arrow on Hydrant N.E. corner of Russell St. and Lyman Place. C.B.M.#156 Elev. 154.023 Arrow on Hydrant N.W. corner Rivard St. and Milwaukee Ave. C.B.M.#154 Elev. 148.022 Arrow on Hydrant N.E. corner Hastings St. and Milwaukee Ave.

B.P.R. DIV. NO.	STATE	PROJ. NO.	FISCAL YEAR	SHEET NO.	TOTAL SHEETS
4	MICH.	1-75-1735A			
ROUTE	STATE PROJECT	COUNTY	CITY	SHEET NO.	TOTAL SHEETS
2252A	Wayne	Detroit		155	

B.P.R. DIV. NO.	STATE	PROJ. NO.	FISCAL YEAR	SHEET NO.	TOTAL SHEETS
4	MICH.				
ROUTE	STATE PROJECT	COUNTY	CITY	SHEET NO.	TOTAL SHEETS

Notes:
 All Street Returns are 15'R unless otherwise noted.
 All Alley Returns are 4'R unless otherwise noted.
 Stationing shown in brackets, () thus, refer to survey stationing.
 Bench marks are based on City of Detroit Datum.
 All distances are given to thousandths of a foot.



PLANS PREPARED BY
 CITY OF DETROIT
 DEPARTMENT OF PUBLIC WORKS
 CITY ENGINEER'S OFFICE
 BUREAU OF HIGHWAYS AND EXPRESSWAYS

CURVE DATA W. P. CHRYSLER MAIN ROADWAY

Curve 7	Curve 8
$\Delta = 10^{\circ} 56' 50''$	$\Delta = 13^{\circ} 14' 40''$
$D = 3^{\circ} 00' 00''$	$D = 3^{\circ} 00' 00''$
$R = 1909.859'$	$R = 1909.859'$
$T = 183.011'$	$T = 306.670'$
$L = 364.907'$	$L = 608.148'$
$E = 8.748'$	$E = 24.465'$
$PC = 173+09.652$	$PC = 182+79.303$
$PI = 174+92.663$	$PI = 185+85.973$
$PT = 176+74.559$	$PT = 188+87.451$

CURVE DATA SOUTH TO WEST TURNING ROADWAY

Curve 3 SW	Curve 4 SW	Curve 5 SW	Curve 6 SW
$\Delta = 13^{\circ} 09' 41''$	$\Delta = 4^{\circ} 42' 05''$	$\Delta = 10^{\circ} 56' 50''$	$\Delta = 4^{\circ} 55' 19''$
$D = 7^{\circ} 30' 00''$	$D = 5^{\circ} 00' 00''$	$D = 2^{\circ} 51' 25.68''$	$D = 3^{\circ} 18' 10.48''$
$R = 763.944'$	$R = 1145.916'$	$R = 2005.359'$	$R = 1734.705'$
$T = 88.130'$	$T = 47.040'$	$T = 192.162'$	$T = 74.555'$
$L = 175.485'$	$L = 94.028'$	$L = 383.154'$	$L = 149.018'$
$E = 5.067'$	$E = 0.965'$	$E = 9.186'$	$E = 1.601'$
$PC = 10+80.181$	$PC = 14+54.165$	$PC = 19+58.182$	$PC = 23+41.336$
$PI = 11+68.311$	$PI = 15+01.205$	$PI = 21+50.344$	$PI = 24+15.891$
$PT = 12+55.666$	$PT = 15+48.193$	$PT = 23+41.336$	$PT = 24+90.354$

Mistake Lane Curve in CURVE DATA EN TURNING RDWY

Curve 7 SW	Curve 8 EN
$\Delta = 3^{\circ} 48' 54''$	$\Delta = 4^{\circ} 06' 29.81''$
$D = 4^{\circ} 00' 00''$	$D = 3^{\circ} 05' 56.33''$
$R = 1432.394'$	$R = 1848.859'$
$T = 47.705'$	$T = 66.313'$
$L = 95.375'$	$L = 132.569'$
$E = 0.794'$	$E = 1.189'$
$PC = 178+34.542$	$PC = 30+05.560$
$PI = -$	$PI = 30+71.873$
$PT = -$	$PT = 31+38.129$

CURVE DATA WEST TO NORTH TURNING ROADWAY

Curve 4 WN	Curve 5 WN	Curve 6 WN	Curve 7 WN
$\Delta = 21^{\circ} 37' 51.43''$	$\Delta = 9^{\circ} 08' 14.69''$	$\Delta = 3^{\circ} 01' 13.10''$	$\Delta = 7^{\circ} 23' 22.90''$
$D = 7^{\circ} 38' 21.97''$	$D = 3^{\circ} 09' 31.60''$	$D = 5^{\circ} 30' 00.00''$	$D = 3^{\circ} 00' 00.00''$
$R = 750.000'$	$R = 1813.859'$	$R = 1041.741'$	$R = 1909.859'$
$T = 143.280'$	$T = 144.943'$	$T = 27.464'$	$T = 123.333'$
$L = 283.149'$	$L = 289.271'$	$L = 54.915'$	$L = 246.323'$
$E = 13.563'$	$E = 0.362'$	$E = 0.362'$	$E = 3.978'$
$PC = 11+52.129$	$PC = 14+35.278$	$PC = 18+69.293$	$PC = 23+65.643$
$PI = 12+95.409$	$PI = 18+96.757$	$PI = 24+88.976$	$PI = 24+88.976$
$PT = 14+35.278$	$PT = 17+24.549$	$PT = 19+24.208$	$PT = 26+11.966$

Curve 6 SW

$\Delta = 4^{\circ} 55' 19''$	$\Delta = 4^{\circ} 55' 19''$
$D = 3^{\circ} 18' 10.48''$	$D = 3^{\circ} 18' 10.48''$
$R = 1734.705'$	$R = 1734.705'$
$T = 74.555'$	$T = 74.555'$
$L = 149.018'$	$L = 149.018'$
$E = 1.601'$	$E = 1.601'$
$PC = 23+41.336$	$PC = 23+41.336$
$PI = 24+15.891$	$PI = 24+15.891$
$PT = 24+90.354$	$PT = 24+90.354$

Scale: 1" = 40'

ALIGNMENT OF WALTER P. CHRYSLER EXPRESSWAY STA. 173+00 TO STA. 185+00 S'BD. CHRYSLER TO E'BD. AND W'BD. FORD TURNING ROADWAY AND W'BD. FORD TO N'BD. CHRYSLER TURNING ROADWAY

B.P.R. DIV. NO.	STATE	PROJ. NO.	FISCAL YEAR	SHEET NO.	TOTAL SHEETS
4	MICH.	1-15-1(1)54			

ROUTE	STATE PROJECT	COUNTY	CITY	SHEET NO.	TOTAL SHEETS
82252A	WAYNE	DETROIT		156	

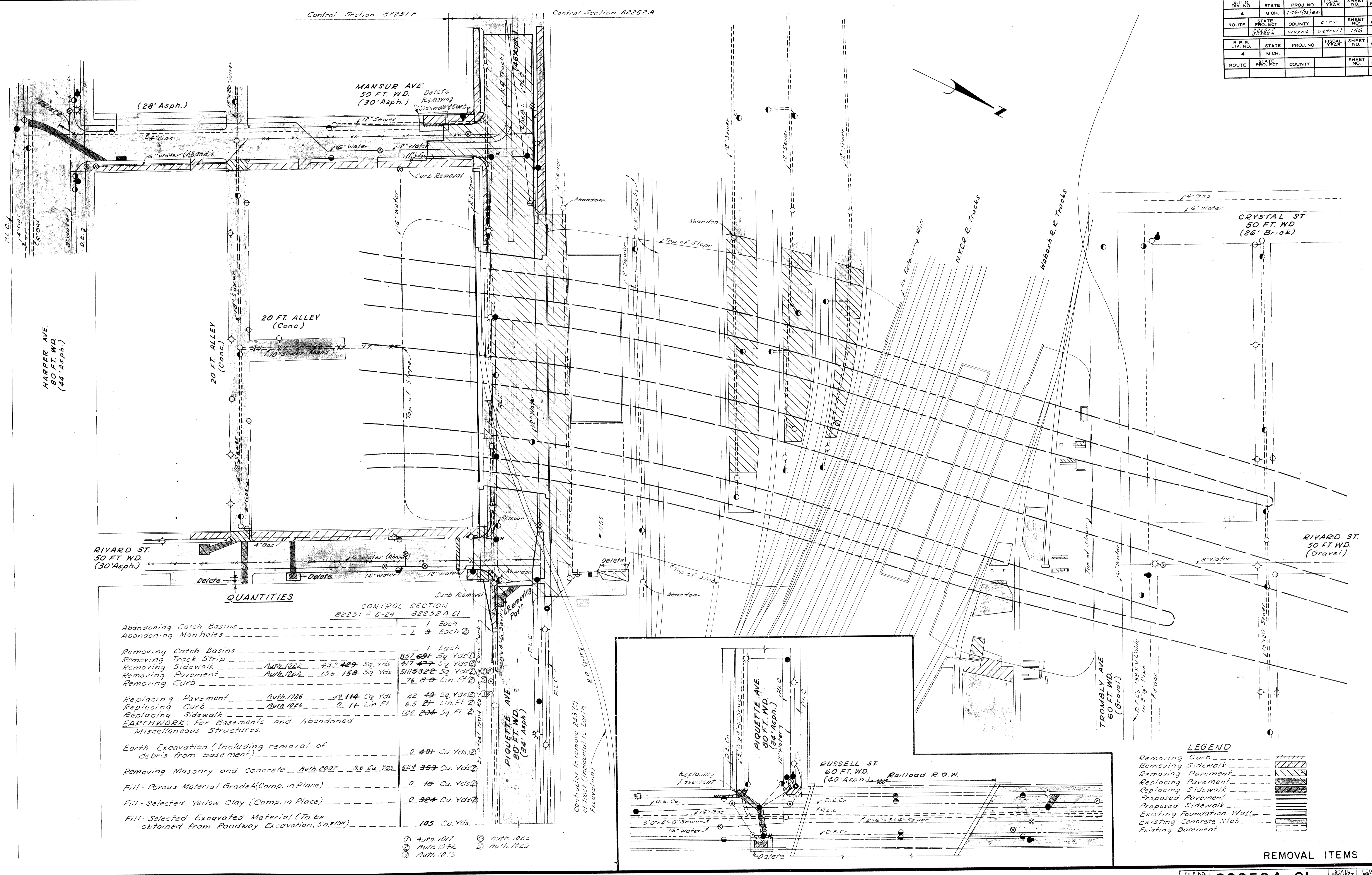
B.P.R. DIV. NO.	STATE	PROJ. NO.	FISCAL YEAR	SHEET NO.	TOTAL SHEETS
4	MICH.				

ROUTE	STATE PROJECT	COUNTY	CITY	SHEET NO.	TOTAL SHEETS

SOILS LEARNER
LIBRARY BY
TRA EDITOR
CHECKED BY
CORRECTED BY
RECOMMENDED BY
DATE

G.D.M. 11/1
F. DeLuch 6/3
F.A. Callabiano 6/3
R. DeJ. 11/15
G. J. 6/3
C. J. 6/3
R. H. 6/3
9/13

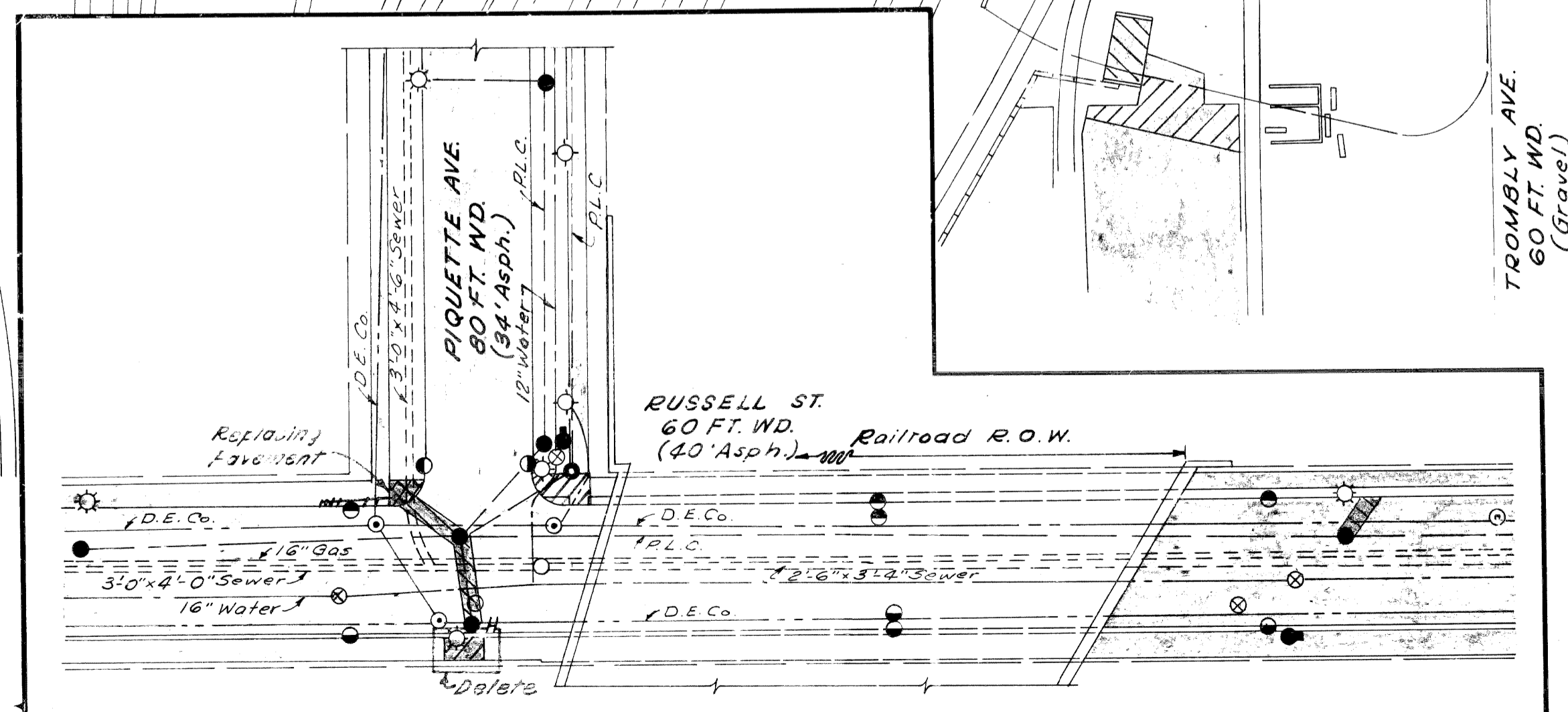
PLANS PREPARED BY
CITY OF DETROIT
DEPARTMENT OF PUBLIC WORKS
CITY ENGINEER'S OFFICE
BUREAU OF HIGHWAYS AND EXPRESSWAYS



QUANTITIES

	CONTROL SECTION 82251 F 6-24	82252 A CI
Abandoning Catch Basins	1 Each	1 Each
Abandoning Manholes	1 3 Each	
Removing Catch Basins		1 Each
Removing Track Strip		857.691 Sq. Yds. (1)
Removing Sidewalk	Auth. 1026 420.429 Sq. Yds. (2)	417.477 Sq. Yds. (2)
Removing Pavement	Auth. 1026 132.158 Sq. Yds. (2)	51153.222 Sq. Yds. (2)
Removing Curb		76.8 Lin. Ft. (2)
Replacing Pavement	Auth. 1026 21.114 Sq. Yds. (2)	22.49 Sq. Yds. (2)
Replacing Curb	Auth. 1026 2.11 Lin. Ft. (2)	6.5 Lin. Ft. (2)
Replacing Sidewalk		122.204 Sq. Ft. (2)
EARTHWORK: For Basements and Abandoned Miscellaneous Structures.		
Earth Excavation (Including removal of debris from basement)		0.407 Cu. Yds. (2)
Removing Masonry and concrete	Auth. 1007 8.6 Cu. Yds. (2)	629.359 Cu. Yds. (2)
Fill - Porous Material Grade A (Comp. in Place)		0.10 Cu. Yds. (2)
Fill - Selected Yellow Clay (Comp. in Place)		0.324 Cu. Yds. (2)
Fill - Selected Excavated Material (To be obtained from Roadway Excavation, S# 158)		105 Cu. Yds. (2)

① Auth. 1017 ③ Auth. 1023
 ② Auth. 1072 ④ Auth. 1029
 ③ Auth. 1013



LEGEND

Removing Curb	////
Removing Sidewalk	-----
Removing Pavement	
Replacing Pavement	-----
Replacing Sidewalk	
Proposed Pavement	-----
Proposed Sidewalk	-----
Existing Foundation Wall	
Existing Concrete Slab	-----
Existing Basement	-----

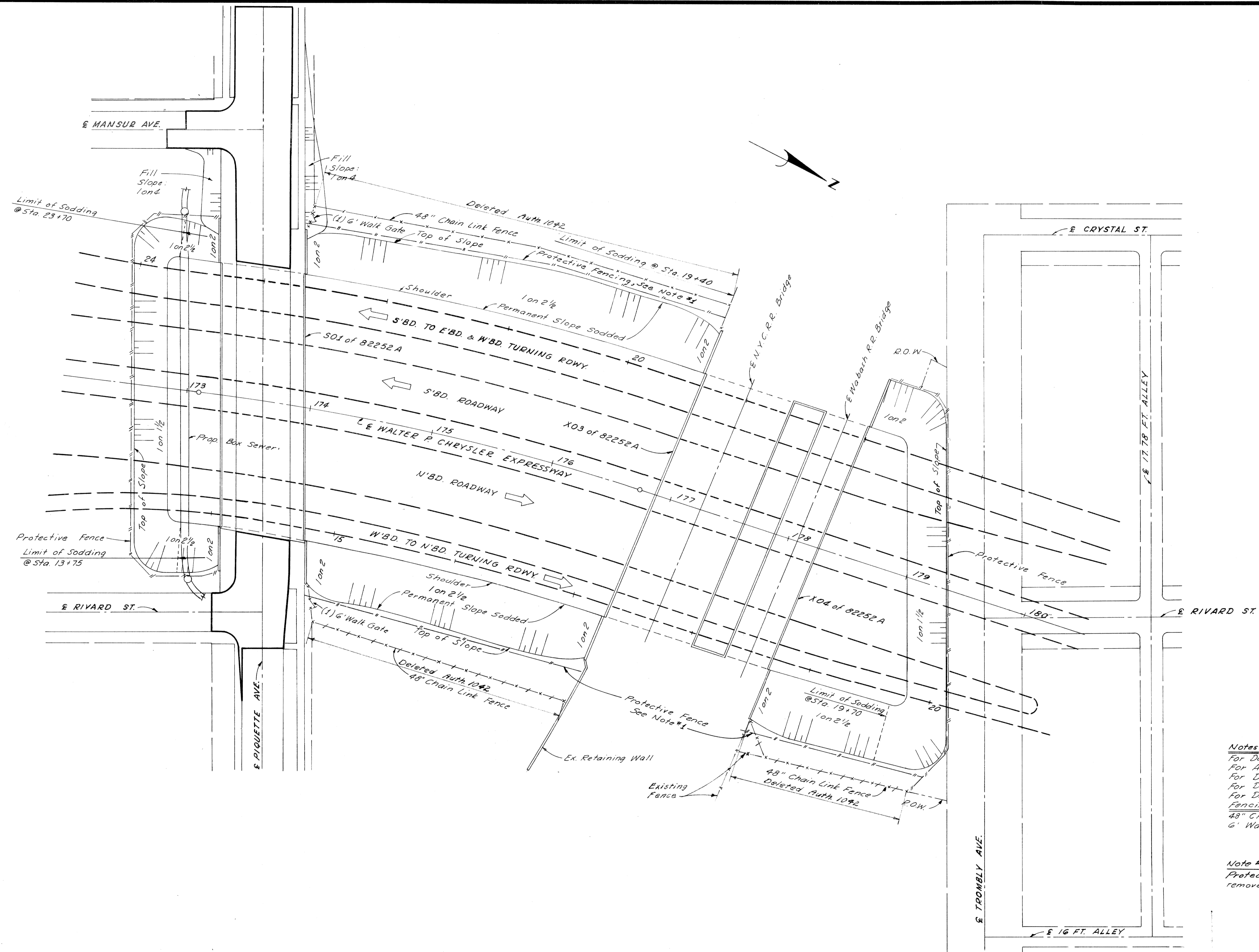
REMOVAL ITEMS

FILE NO. 82252A	PROJECT 82252A CI	STATE PROJECT 82252A	FEDERAL PROJECT 1-15-1(1)54	SHEET NO. 156	TOTAL SHEETS 156
--------------------	----------------------	-------------------------	--------------------------------	------------------	---------------------

G.D. MIZ
 5-63
 F.A. Co. Habiano
 5-63
 S. Temporelli
 5-63
 W. E. Sayer
 8-63
 J. H. Kuehl
 9-63

PLANS PREPARED BY
 CITY OF DETROIT
 DEPARTMENT OF PUBLIC WORKS
 CITY ENGINEERS OFFICE
 BUREAU OF HIGHWAYS AND EXPRESSWAYS

D.P.R. DIV. NO.	STATE	PROJ. NO.	FISCAL YEAR	SHEET NO.	TOTAL SHEETS
4	MICH.	1-75-1(79)24			
ROUTE	STATE PROJECT	COUNTY	CITY	SHEET NO.	TOTAL SHEETS
82252A		Wayne	Detroit	157	
D.P.R. DIV. NO.	STATE	PROJ. NO.	FISCAL YEAR	SHEET NO.	TOTAL SHEETS
4	MICH.				
ROUTE	STATE PROJECT	COUNTY		SHEET NO.	TOTAL SHEETS



Notes:
 For Detailed Grades of Bridge Approaches See Sh. #161 & 162
 For Alignment Details See Sh. #154 & 155
 For Details of Piquette Ave. Bridge See SOI of 82252A
 For Details of NYC R.R. Bridge See X03 of 82252A
 For Details of Wabash R.R. Bridge See X04 of 82252A
 Fencing This Sheet:
 48" Chain Link Fence - Auth. 1042 - 43,765 Lin. Ft.
 6' Walk Gates - 2 Each

Note #1
 Protective Fence to be placed and removed as directed by the Engineer.

PLAN
 Scale 1" = 40'

PLAN
 WALTER P. CHRYSLER EXPRESSWAY
 STA. 172+85 TO STA. 179+00

5-63
5-63
5-63
5-63
5-63
5-63
5-63
5-63
5-63
5-63

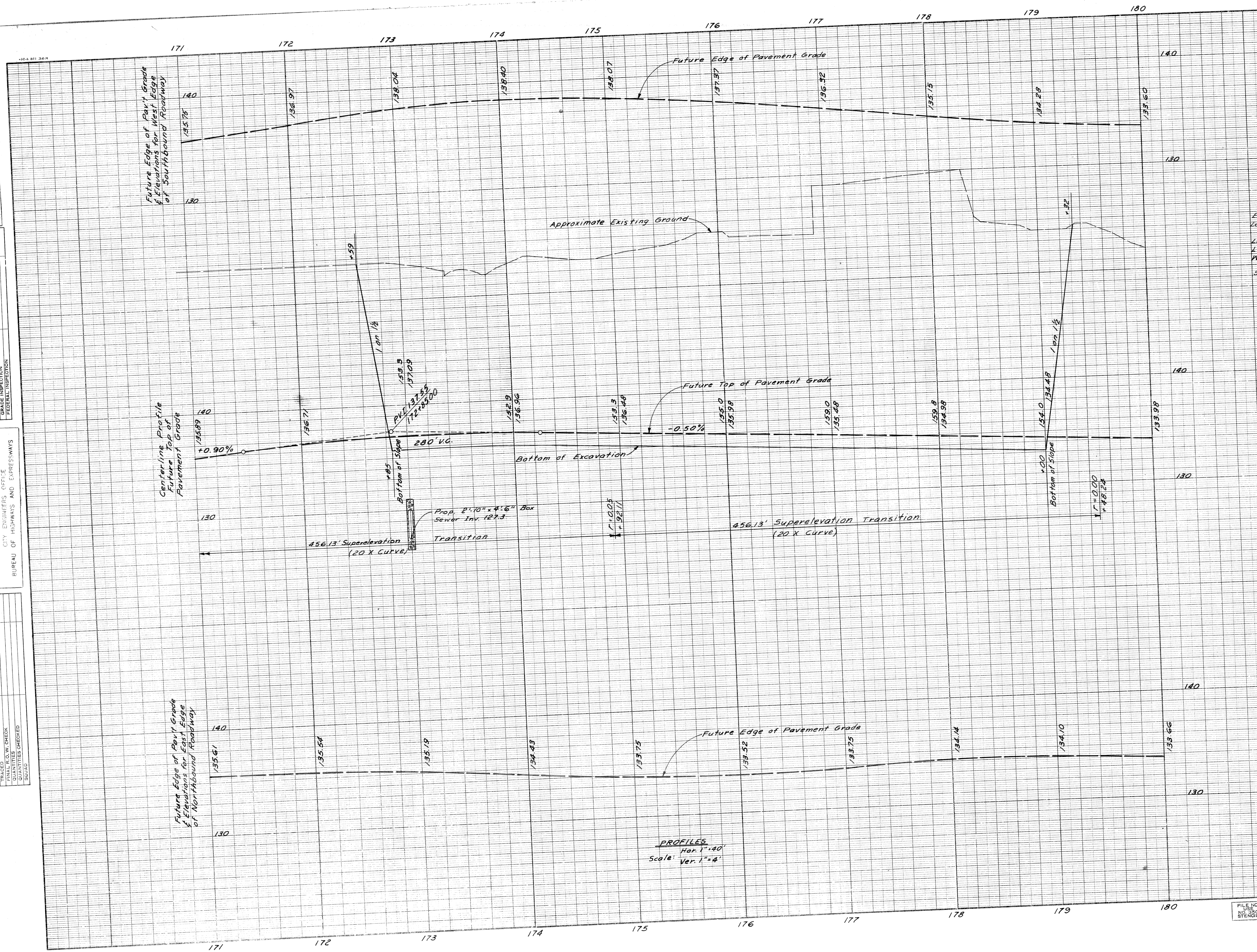
OPERATION
SURVEYED
PLAN CHECKED
PROFILE PLOTTED
PROFILE CHECKED
GRADE INSPECTION
FEDERAL INSPECTION

PLANS PREPARED BY
CITY OF DETROIT
DEPARTMENT OF PUBLIC WORKS
CITY ENGINEERS OFFICE
BUREAU OF HIGHWAYS AND EXPRESSWAYS

OPERATION
PRELIMINARY R.O.W. CHECKED
FINAL DESIGN CHECKED
FINAL R.O.W. CHECK
QUANTITIES CHECKED
SOQA

R.P.D. DIV. NO.	STATE	PROJ. NO.	FISCAL YEAR	SHEET NO.	TOTAL SHEETS
4	MICH.	1-75-17374		158	158
ROUTE	STATE PROJECT	COUNTY	CITY	SHEET NO.	TOTAL SHEETS
82252A	Wayne	Detroit		158	158

Excavation --- 118,873 Cu. Yd.
Loss to Removal --- 110,967 Cu. Yd.
Sh # 156 --- 429 Cu. Yd.
Loss to Sh # 160 --- 1,848 Cu. Yd.
Loss to City Sewers --- 233 Cu. Yd.
Waste --- 116,437 Cu. Yd.
Sodding - See Sh # 159



PROFILES
Hor. 1" = 40'
Ver. 1" = 4'

WALTER P CHRYSLER
EXPRESSWAY PROFILES
STA. 172+85 TO 179+00

FILE NO.	STATE PROJECT	FEDERAL PROJECT	SHEET NO.
82252A CI	173-174/158	173-174/158	158

B. P. R. DIV. NO.	STATE	PROJ. NO.	FISCAL YEAR	SHEET NO.	TOTAL SHEETS
4	MICH.	1-75-1(73)54		159	
ROUTE	STATE PROJECT	COUNTY	CITY	SHEET NO.	TOTAL SHEETS
82252A		Wayne	Detroit	159	

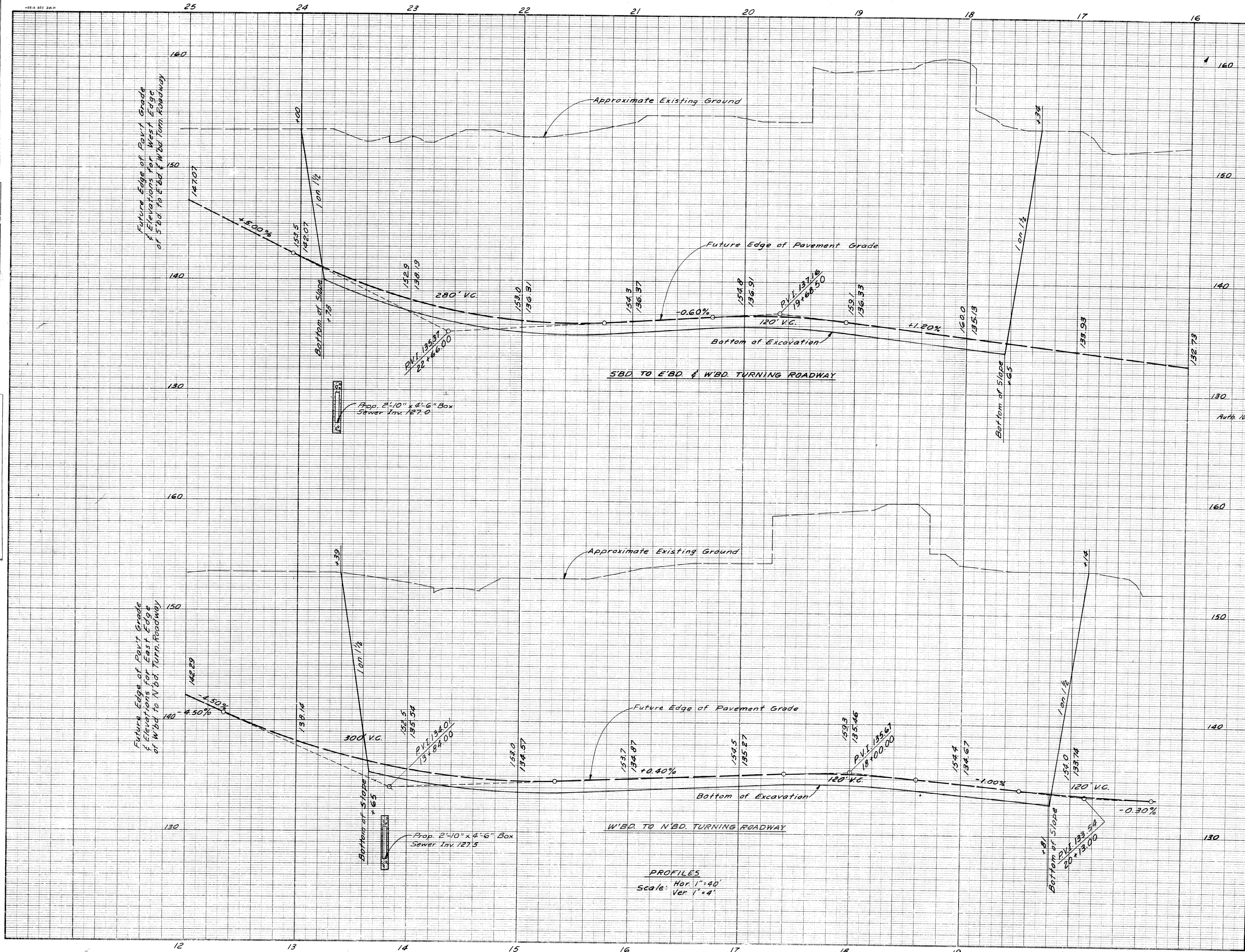
B. P. R. DIV. NO.	STATE	PROJ. NO.	FISCAL YEAR	SHEET NO.	TOTAL SHEETS
4	MICH.				
ROUTE	STATE PROJECT	COUNTY	CITY	SHEET NO.	TOTAL SHEETS

OPERATION	BY	DATE
PRELIMINARY GRADE CHECKED		
FINAL DESIGN CHECKED		
QUANTITIES CHECKED		
PLAN CHECKED		
PROFILE CHECKED		
PRELIMINARY GRADE		
GRADE INSPECTION		
FEDERAL INSPECTION		

OPERATION	BY	DATE
PRELIMINARY GRADE CHECKED		
FINAL DESIGN CHECKED		
QUANTITIES CHECKED		
PLAN CHECKED		
PROFILE CHECKED		
PRELIMINARY GRADE		
GRADE INSPECTION		
FEDERAL INSPECTION		

PLANS PREPARED BY
CITY OF DETROIT
DEPARTMENT OF PUBLIC WORKS
CITY ENGINEERS OFFICE
BUREAU OF HIGHWAYS AND EXPRESSWAYS

OPERATION	BY	DATE
PRELIMINARY GRADE CHECKED		
FINAL DESIGN CHECKED		
QUANTITIES CHECKED		
PLAN CHECKED		
PROFILE CHECKED		
PRELIMINARY GRADE		
GRADE INSPECTION		
FEDERAL INSPECTION		



Sod Backslopes
Auth 1042 3,658
3,579 Sq Yds Class A Sodding
Excavation - See Sh. 158

PROFILES
Scale: Hor. 1"=40'
Ver. 1"=4'

S'BD. CHRYSLER TO E'BD. & W'BD. FORD
TURNING ROADWAY PROFILE
STA. 17+65 TO STA. 23+78
W'BD. FORD TO N'BD. CHRYSLER
TURNING ROADWAY PROFILE
STA. 13+65 TO STA. 19+81

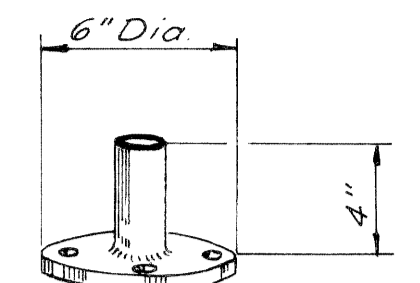
SQUAD LEADER: G.D. MIZ
 DRAWN BY: F.A. COLEMAN
 CHECKED BY: E. DEJONTE
 CORRECT: ALLEN E. RYAN
 RECOMMENDED FOR APPROVAL: A.P. HICK

DATE: _____
 BY: _____
 OPERATION: _____
 PRELIMINARY E.O.W. CHECKED: _____
 FINAL DESIGN CHECKED: _____
 FINAL R.O.W. CHECK: _____
 QUANTITIES CHECKED: _____
 SQUAD: _____

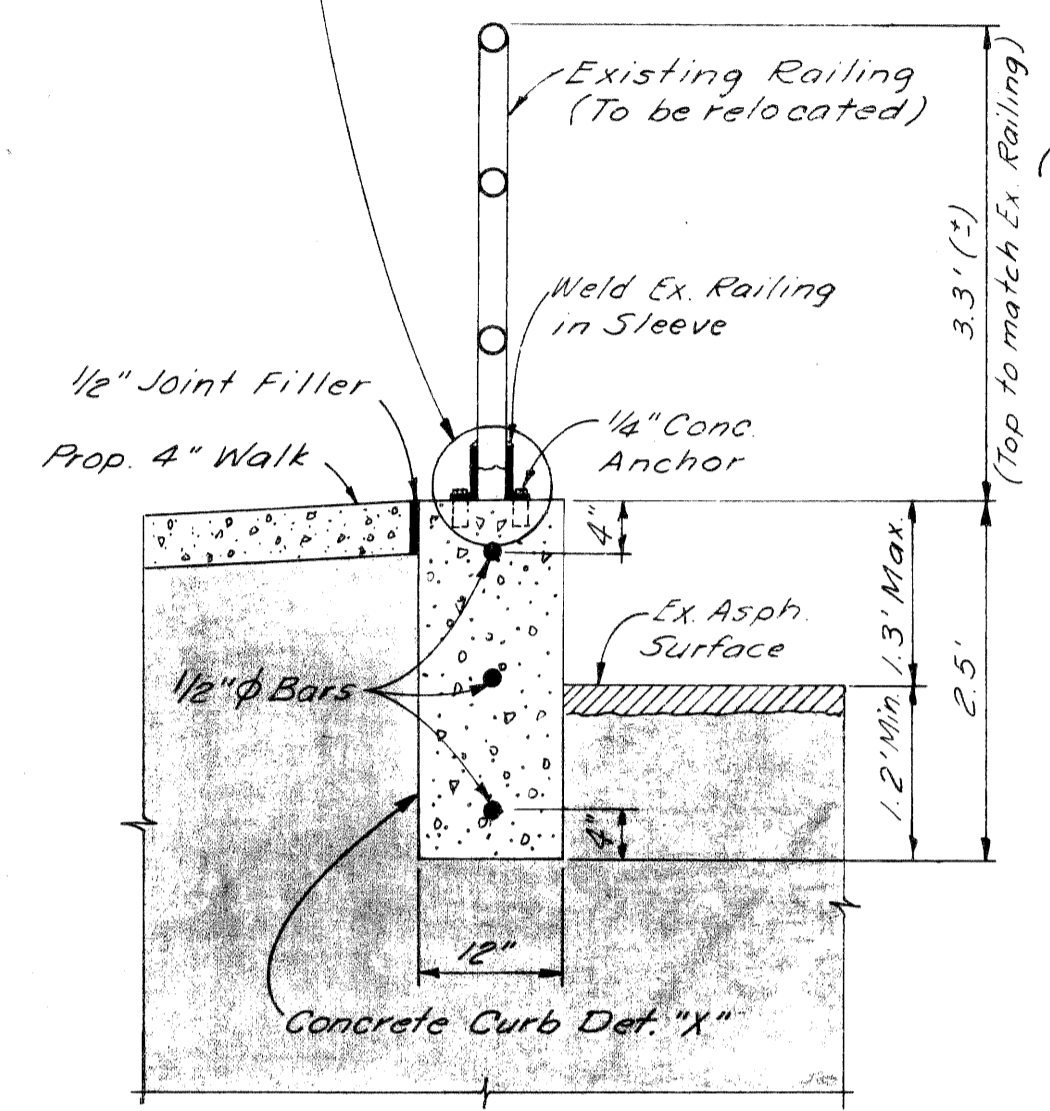
PLANS PREPARED BY: DETROIT
 CITY OF DETROIT
 DEPARTMENT OF PUBLIC WORKS
 CITY ENGINEERS' OFFICE
 BUREAU OF HIGHWAYS AND EXPRESSWAYS

SURVEYED: _____
 PLAN CHECKED: _____
 PROFILE PLOTTED: _____
 PANEL CHECKED: _____
 SCALE: _____
 DATE: _____

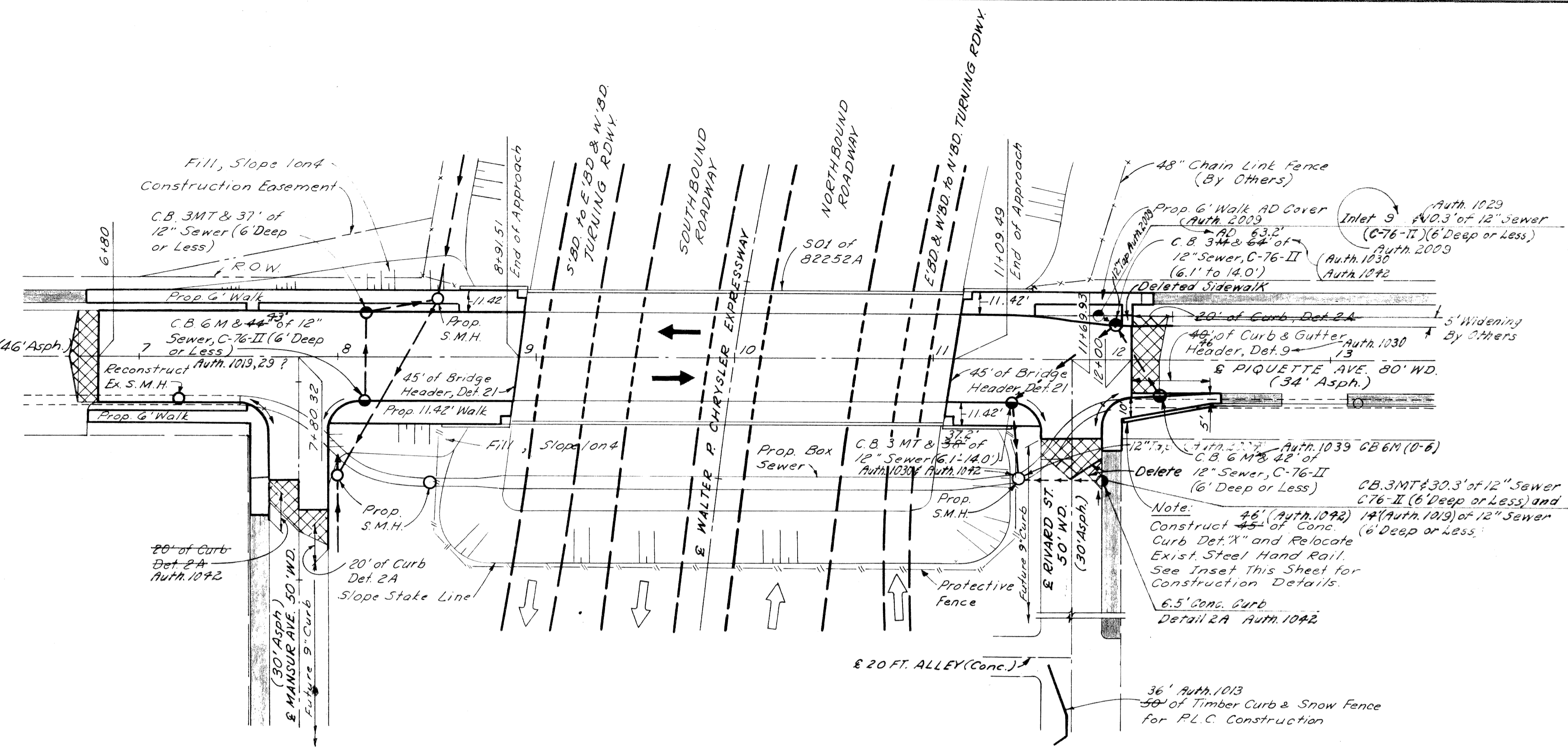
B.P.R. DIV. NO.	STATE	PROJ. NO.	FISCAL YEAR	SHEET NO.	TOTAL SHEETS
4	MICH.	175-17954			
ROUTE	PROJECT	COUNTY	CITY	SHEET NO.	TOTAL SHEETS
82252A	Wayne	Detroit		160	



Note: Sleeve shall be adequate diameter to accept existing Railing.



Curb & Railing Detail



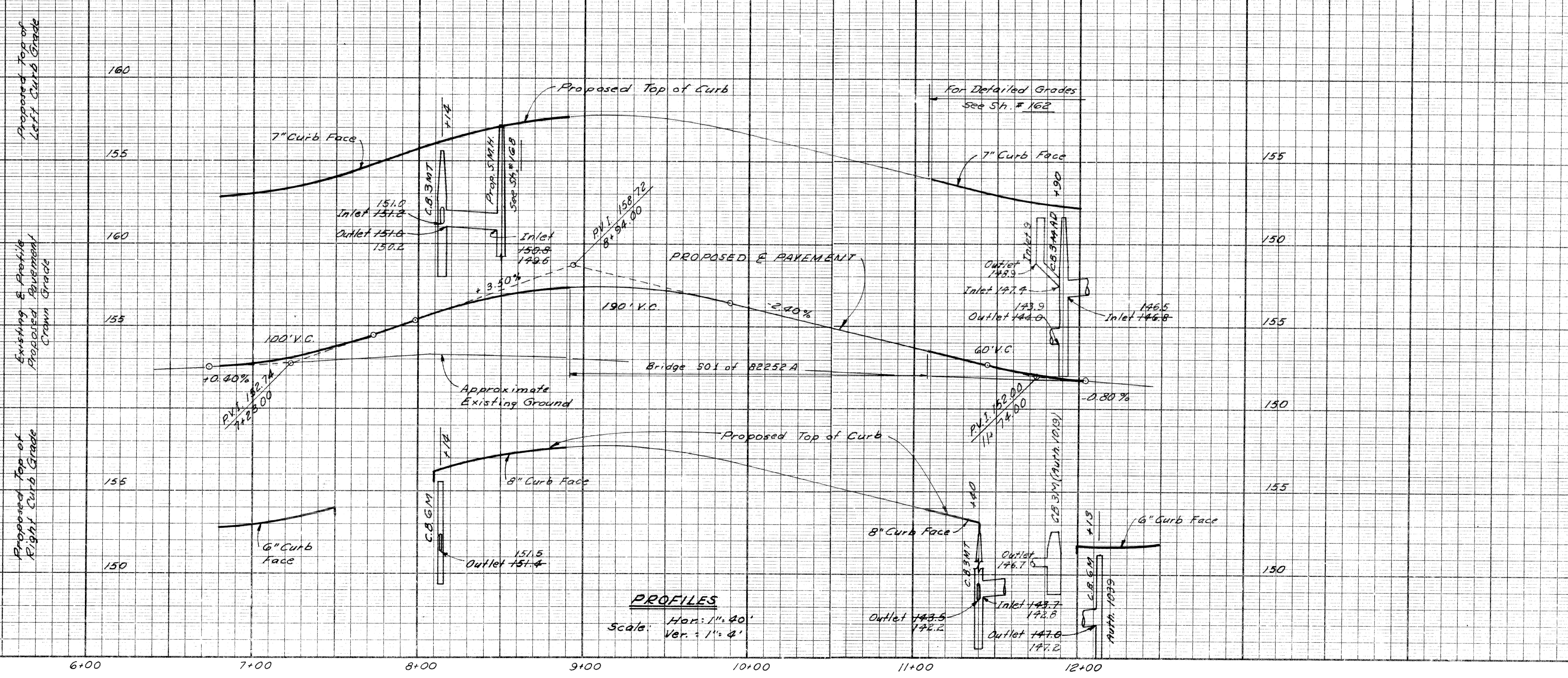
PLAN Scale: 1" = 40'

Remove asphalt surface shown cross-hatched to provide for a smooth connection and to adjust crown. Replace with Bituminous Concrete Pavement.

Station	Remove Exist. Asphalt Surface Sq. Yds.	Bit. Conc. Pav't Sq. Yds.
6+80	51-53	51-53
7+80	52-46	52-46
11+70	47-44	47-44
12+00	53-57	53-57
Totals	203-200	203-200

Auth. 1017
11 Tons Bit. Conc. Wearing Course
11 Tons Bit. Conc. Leveling Course

- NOTES:
- For Alignment and Bench Marks See Sh. # 155
 - All Street Returns are 15'R
 - Existing Sidewalks to remain
 - For Detailed Grades of Rivard St. Intersection, See Sh. # 162
 - For Detailed Grades of Mansur Ave. Intersection, See Sh. # 161
 - For Details of Piquette Ave. Bridge See SOI of 82252A
 - For Details of Prop. Box Sewer, See Sh. # 166



PROFILES Scale: Hor: 1" = 40' Ver: 1" = 4'

Embankment 1.478 Cu. Yd.
 12.5% Shrinkage 370 Cu. Yd.
 Selected Excavated Material Obtained From Sh. # 158
 Sod Fill Slopes 244 Sq. Yds. Class A Sodding 27.5 Auth. 1042

PLAN AND PROFILE PIQUETTE AVENUE

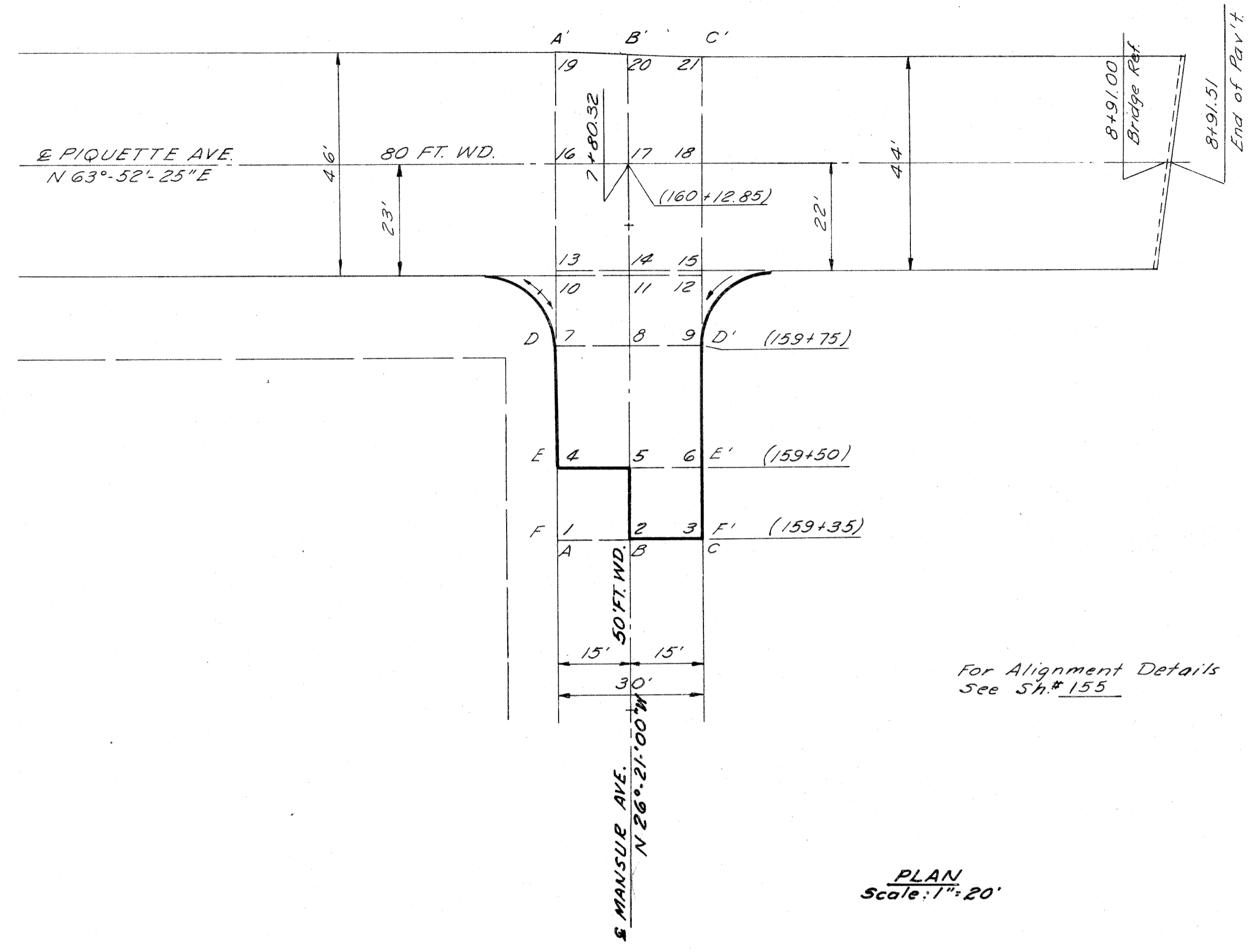
SOIAD TEACHER
 DRAWN BY: 5-3
 TPA: ENR
 CHECKED BY: 5-3
 COPIES: 5-3
 RECOMMENDED: 8-23
 FOR APPROVAL: 9-63

OPERATIONS
 PRELIMINARY R.O. W. CHECKED
 FINAL DESIGN CHECKED
 FINAL R.O. W. CHECK
 QUANTITIES CHECKED
 SOIAD

PLANS PREPARED BY
 CITY OF DETROIT
 DEPARTMENT OF PUBLIC WORKS
 CITY ENGINEERS OFFICE
 BUREAU OF HIGHWAYS AND EXPRESSWAYS

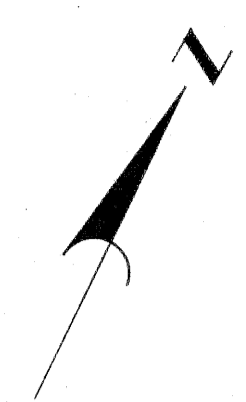
OPERATION
 SURVEY CHECKED
 PLAN PLOTTED
 PROFILE CHECKED
 PRELIMINARY GRADE
 FEDERAL INSPECTION

DATE
 BY

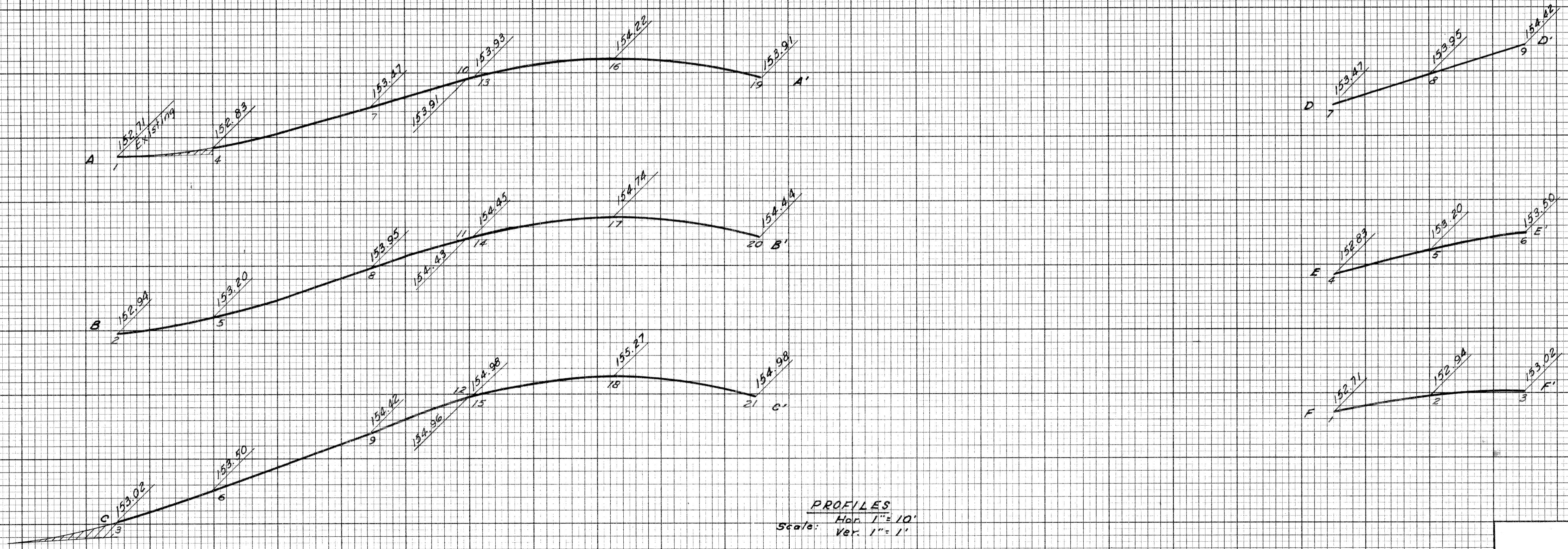


For Alignment Details See Sh. # 155

PLAN Scale: 1" = 20'



S. P. R. DIV. NO.	STATE	PROJ. NO.	FISCAL YEAR	SHEET NO.	TOTAL SHEETS
4	MICH.	1-75-1(73)54			
ROUTE	STATE PROJECT	COUNTY	CITY	SHEET NO.	TOTAL SHEETS
4	82252A	Wayne	Detroit	161	



PROFILES
 Scale: Hor. 1" = 10'
 Ver. 1" = 1'

DETAILED GRADES
 MANSUR AVE. AT PIQUETTE AVE.

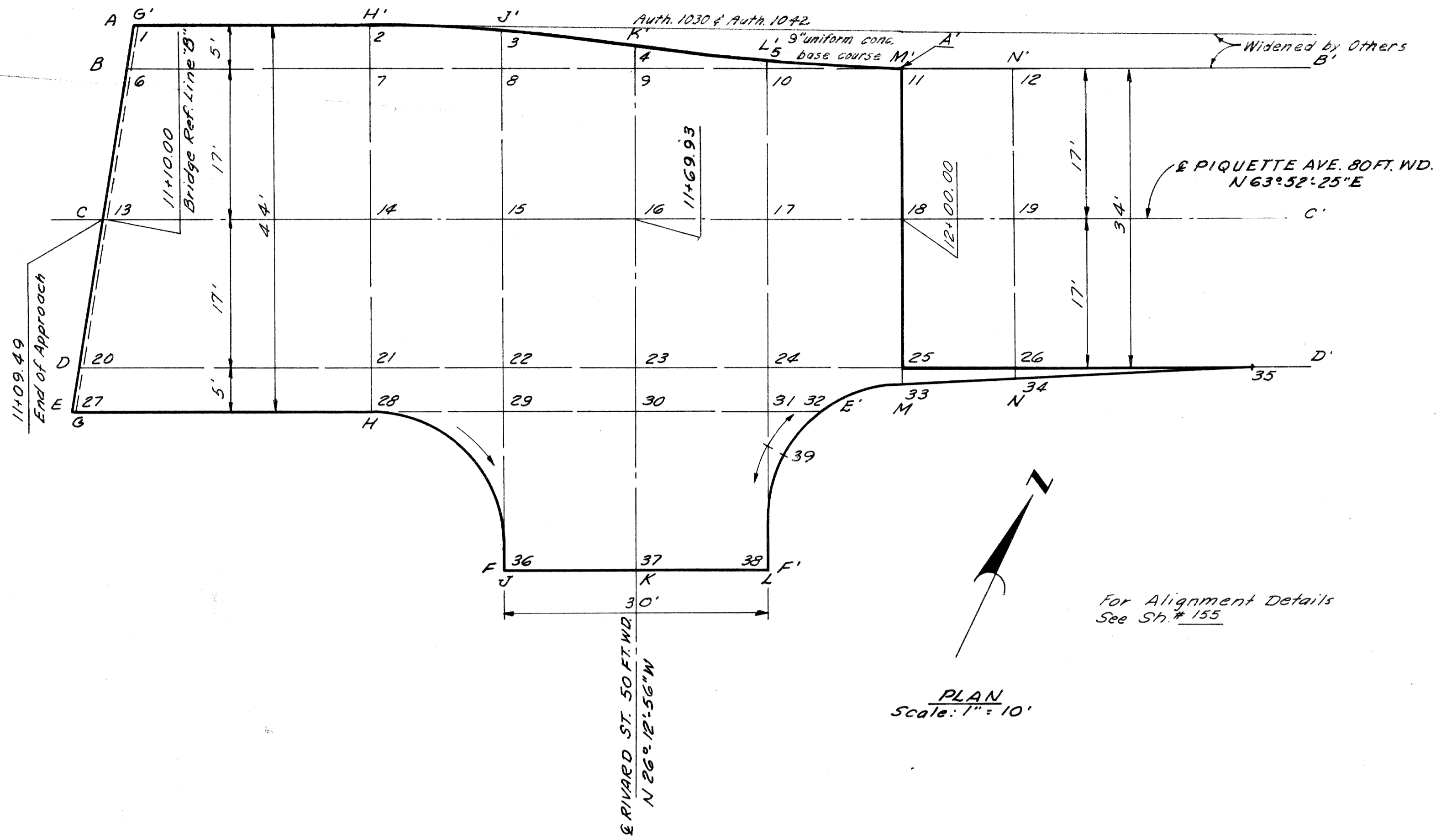
FILE NO. 82252A CI	STATE PROJECT 82252A	FEDERAL PROJECT 1-75-1(73)54	SHEET NO. 161
--------------------	----------------------	------------------------------	---------------

DESIGNED BY	6-23
CHECKED BY	6-23
APPROVED BY	6-23
DATE	6-23
PROJECT	82252A
SHEET NO.	162
TOTAL SHEETS	162

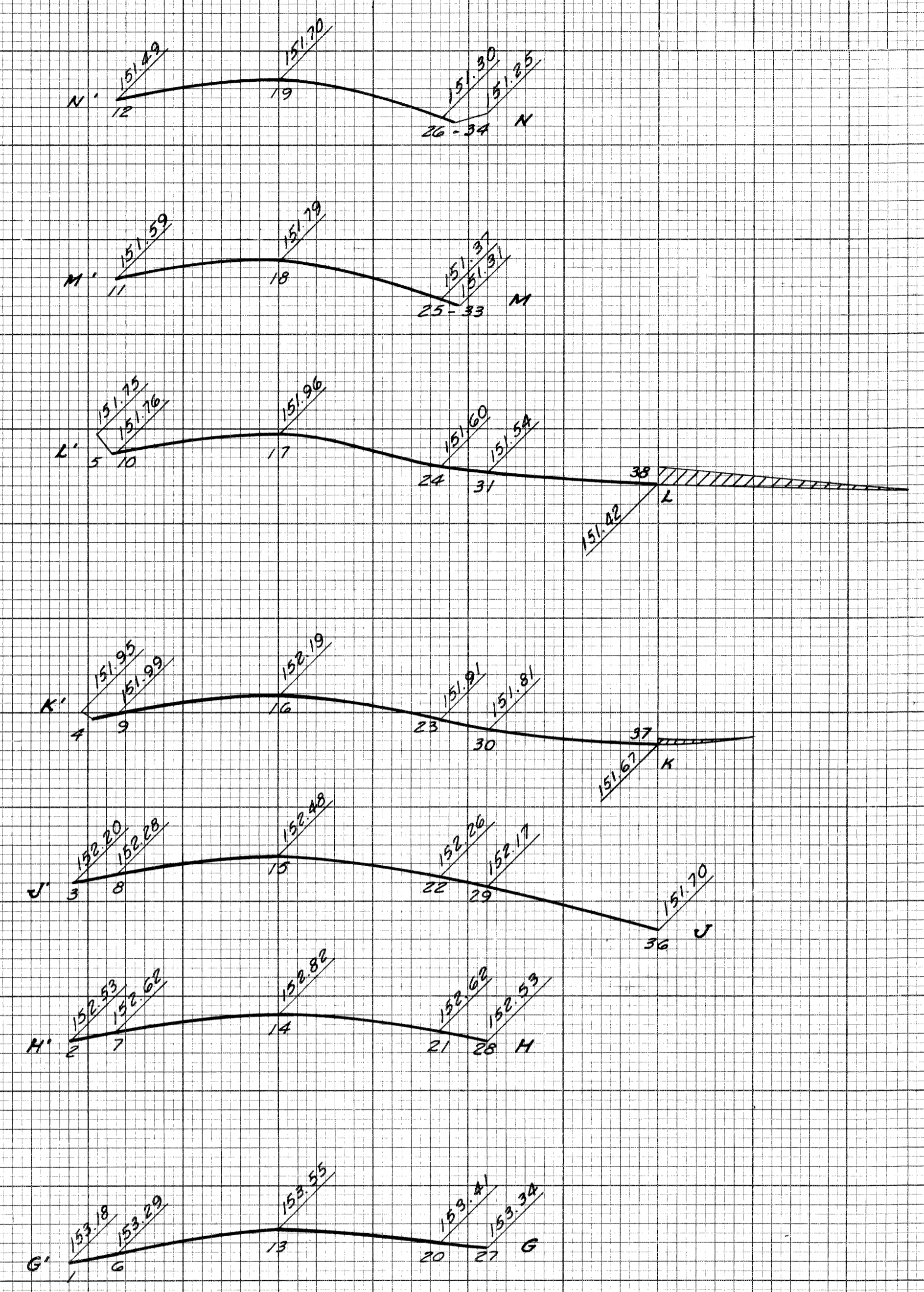
PLANS PREPARED BY
 CITY OF DETROIT
 DEPARTMENT OF PUBLIC WORKS
 CITY ENGINEERS OFFICE
 BUREAU OF HIGHWAYS AND EXPRESSWAYS

DATE	5-22
BY	L.L.
PLOTTED	
CHECKED	
REVIEWED	

B. P. R. DIV. NO.	STATE	PROJ. NO.	FISCAL YEAR	SHEET NO.	TOTAL SHEETS
4	MICH.	1-15-17354			
ROUTE	STATE PROJECT	COUNTY	TWP.	SHEET NO.	TOTAL SHEETS
82252A	Wayne	Detroit		162	



PLAN
 Scale: 1" = 10'



PROFILES
 Scale Hor. 1" = 10'
 Scale Ver. 1" = 1'

DETAILED GRADES
 RIVARD ST. AT PIQUETTE AVE.

FILE NO.	82252A CI	STATE PROJECT	FEDERAL PROJECT	SHEET NO.	TOTAL SHEETS
NO. 1030		82252A	1-15-17354	162	