

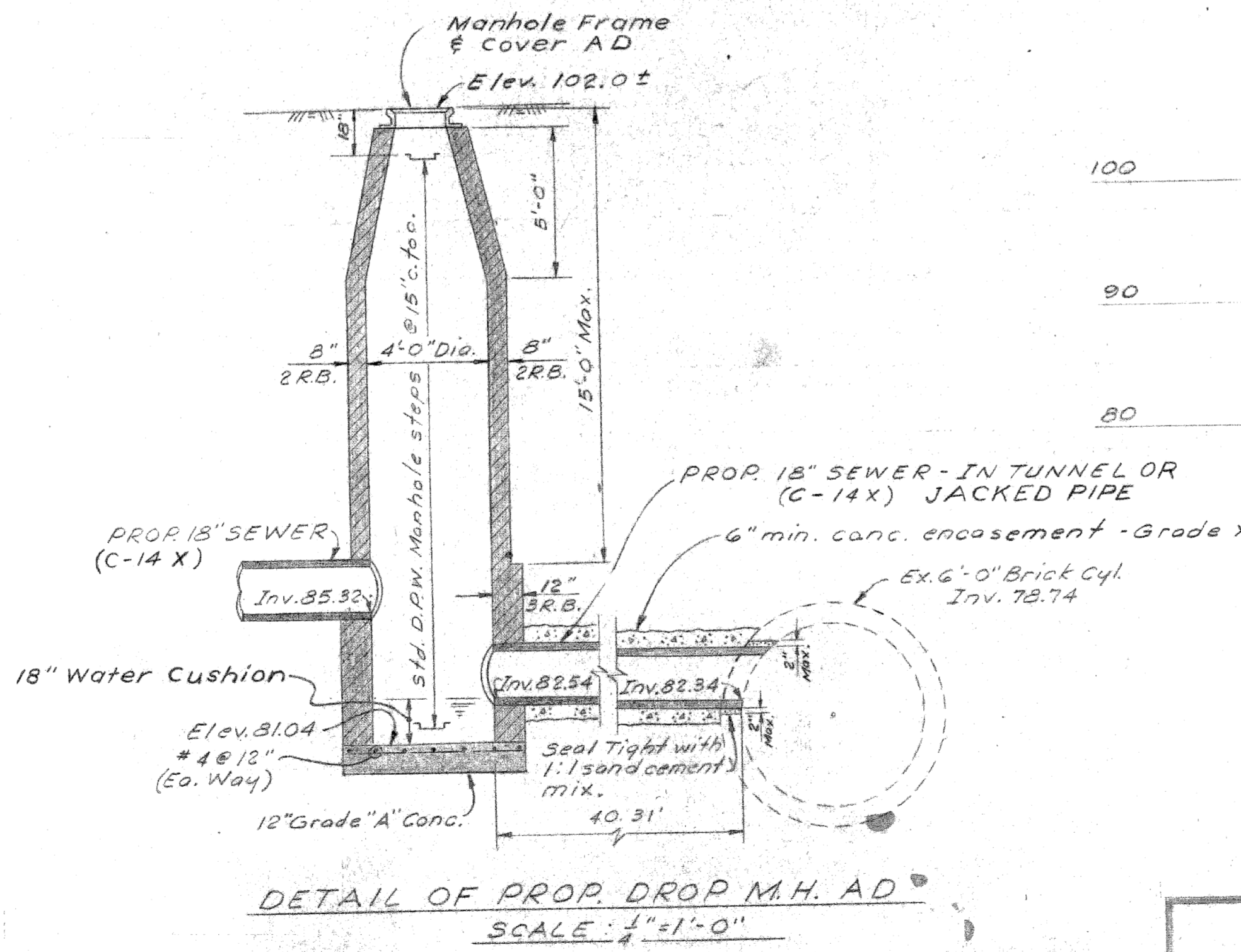
LEGEND

Exist. Sewers over 5'-0"	
Proposed Sewers	
Exist. Sewers 5'-0" or less	
Water, over 12"	
Water, 12" or less	
Gas, over 12"	
Gas, 12" or less	
D.E. Co. Conduit	
M.B.T. Conduit	
P.L.C. Conduit	

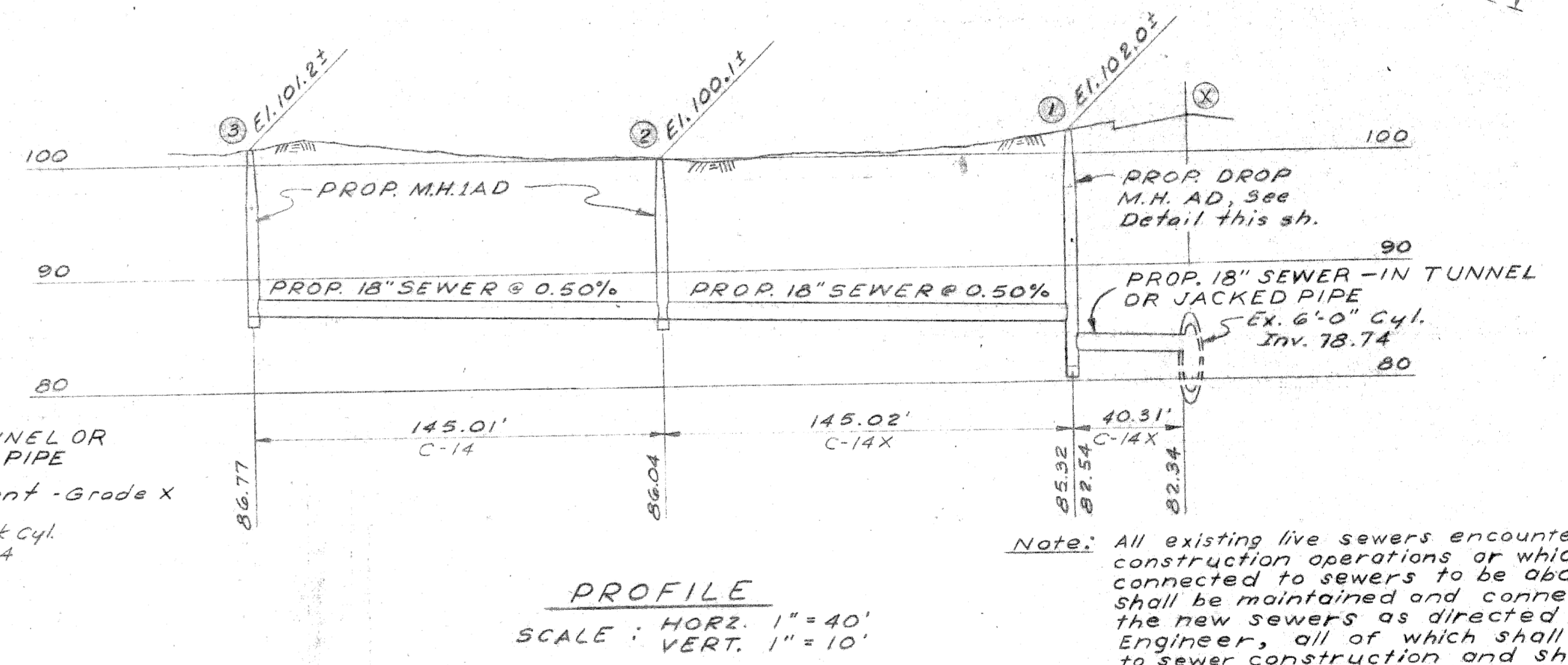
Manhole Location With Respect To Construction & Prop. I-15

M.H. #	I-15 Station	Rt. Angle	Distance
3	996 + 49.25	95.00'	
2	997 + 89.63	95.00'	
1	999 + 30.00	95.00'	

Note: For Typical Bulkhead Detail & Typical Trench Section, See Sheet #2.



DETAIL OF PROP. DROP M.H. AD
SCALE: 1/4" = 1'-0"



PROFILE
SCALE: HORZ. 1" = 40'
VERT. 1" = 10'

Note: All existing live sewers encountered during construction operations or which are connected to sewers to be abandoned shall be maintained and connected to the new sewers as directed by the Engineer, all of which shall be incidental to sewer construction and shall not be paid for as a separate pay item.

CITY OF DETROIT
DEPARTMENT OF PUBLIC WORKS
CITY ENGINEERS OFFICE
DATE 7-12-63

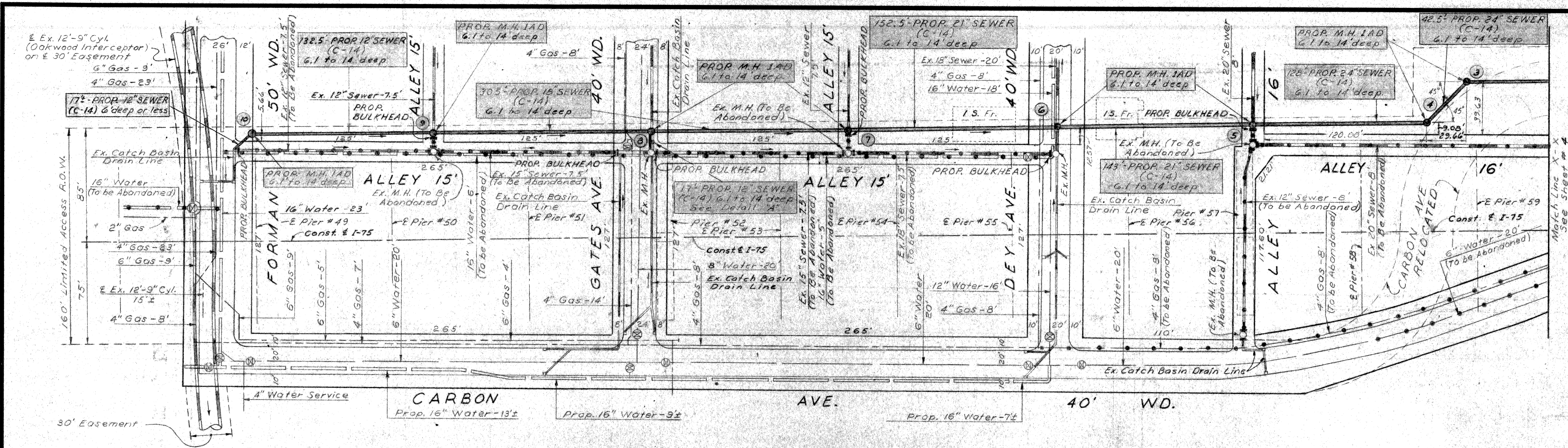
Designed by *A. Somerville*
Drawn by *A. Stephens*
Checked by *J.S. Sicks*

APPROVED *R. Sinks*
Sr. Assoc. Engineer
M. Stepler
Asst. City Engineer
Raymond L. Palmer
Engineer

MICHIGAN STATE HIGHWAY DEPARTMENT
FISHER EXPRESSWAY (I-75) OVER ROUGE RIVER
SEWER ALTERATIONS
SOUTH OF PLEASANT BETWEEN FORT ST. AND PATRICIA
PLAN, PROFILE & DETAILS

NO.	DESCRIPTION	DATE	BY

SQUAD 8555	
DRAWN BY	
TRACED BY	
CHECKED BY	
SHEET	OF

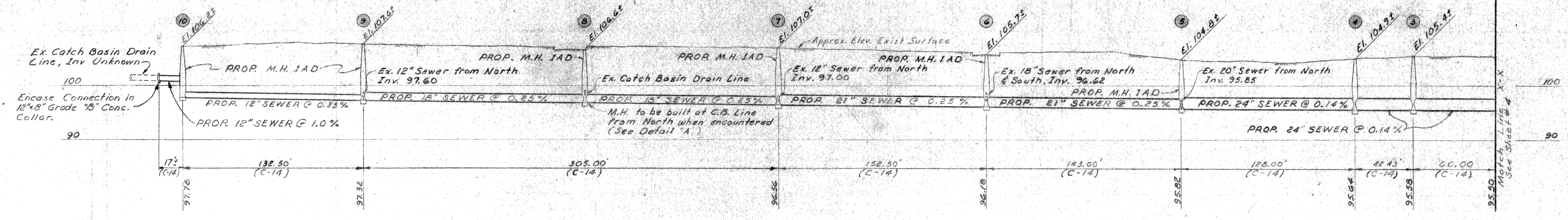


Manhole Location With Respect To Construction & Prop. I-75

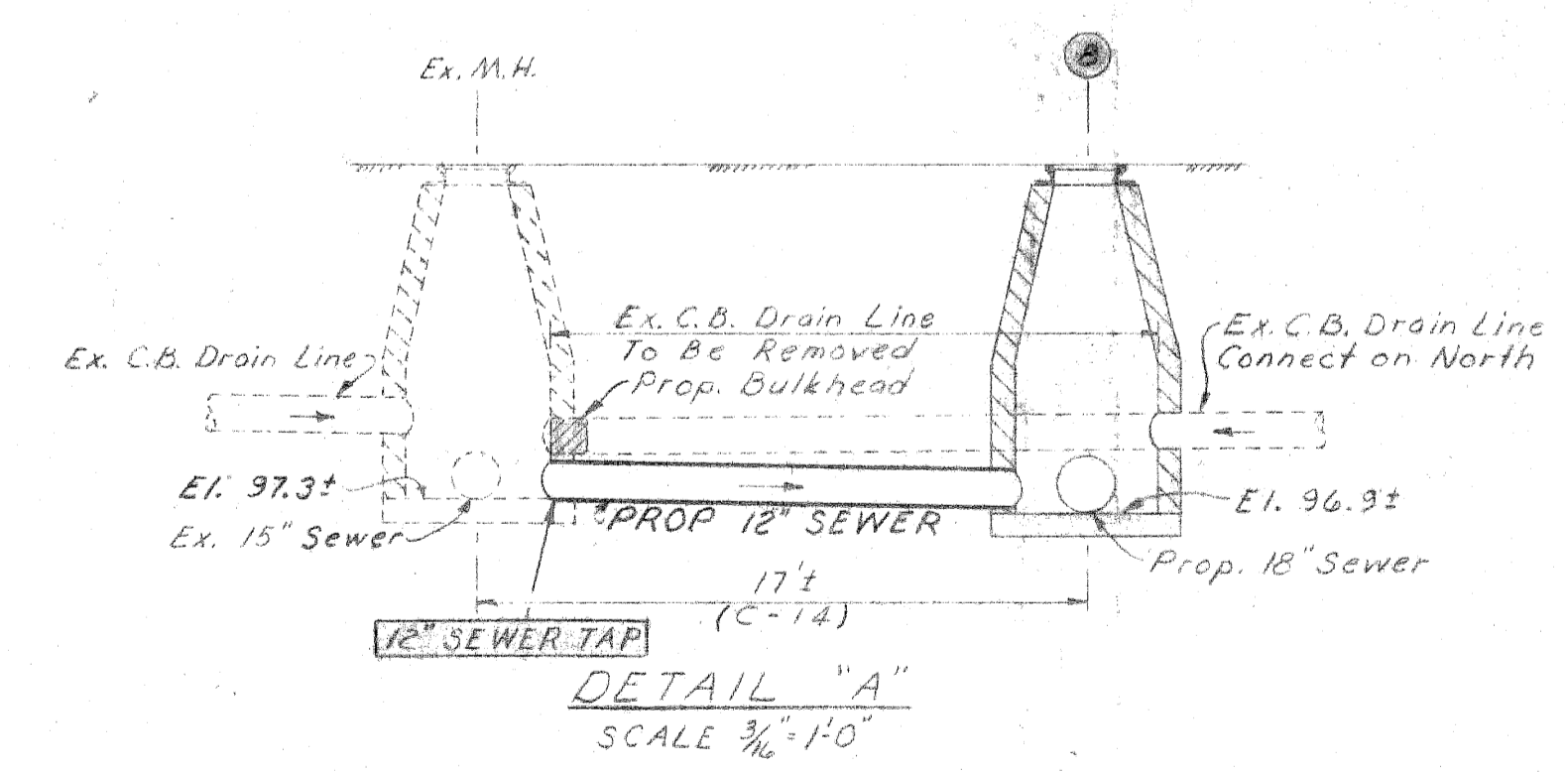
M.H. #	I-75 Station	Rt. Angle Distance
10	1040+12.57	80.00'
9	1041+45.07	80.00'
8	-	80.00'
7	1044+50.07	80.00'
6	1046+02.57	80.00'
5	1047+45.57	80.00'
4	1048+73.57	80.00'
3	1049+03.57	110.00'

Note: For Typical Bulkhead Detail & Typical Trench Section, See Sheet #2

PLAN
SCALE: 1" = 40'



PROFILE
SCALE: HORIZ. 1" = 40'
VERT. 1" = 10'



DETAIL "A"
SCALE: 3/16" = 1'-0"

Note: All existing live sewers encountered during construction operations or which are connected to sewers to be abandoned shall be maintained and connected to the new sewers as directed by the Engineer, all of which shall be incidental to sewer construction and shall not be paid for as a separate pay item.

LEGEND

Exist. Sewers over 5'-0"	=====
Prop. Sewers	=====
Exist. Sewers, 5'-0" or less	=====
Water, over 12"	=====
Water, 12" or less	=====
Gas, over 12"	=====
Gas, 12" or less	=====
D.E. Co. conduit	-----
M.B.T. conduit	-----
R.C. conduit	-----

CITY OF DETROIT
DEPARTMENT OF PUBLIC WORKS

CITY ENGINEER'S OFFICE DATE 7-12-63

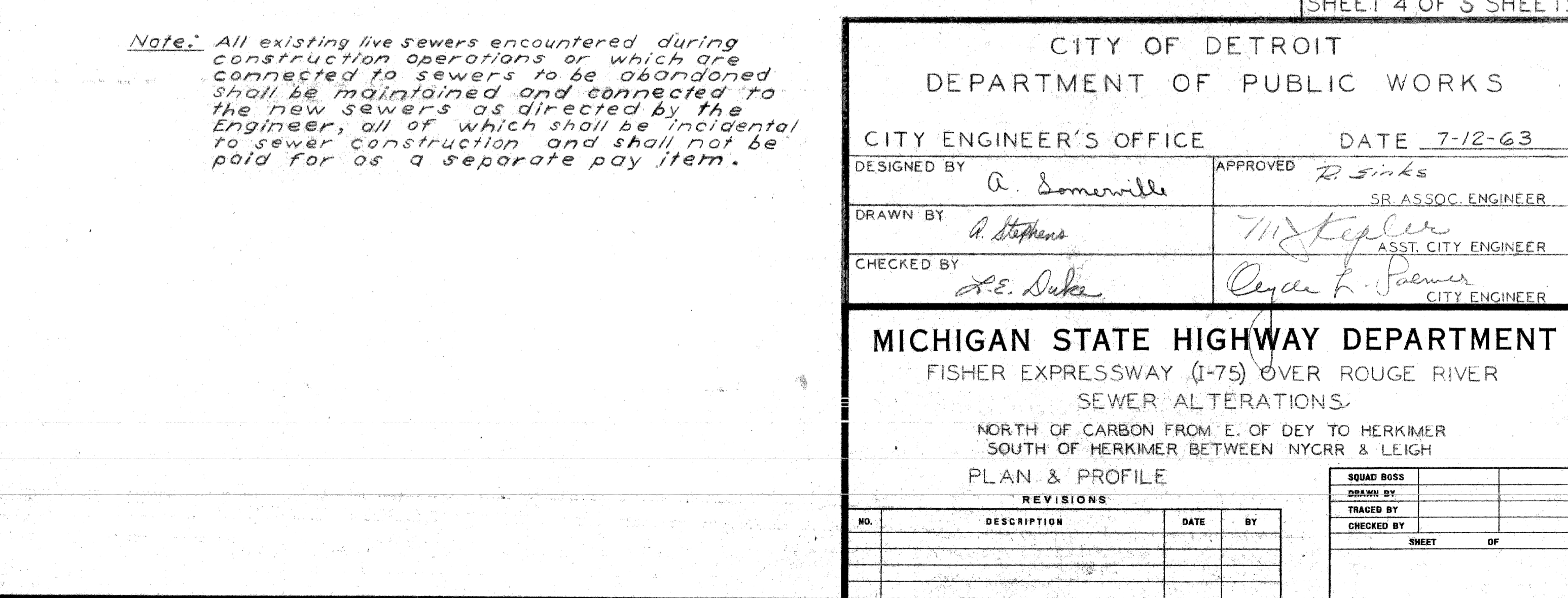
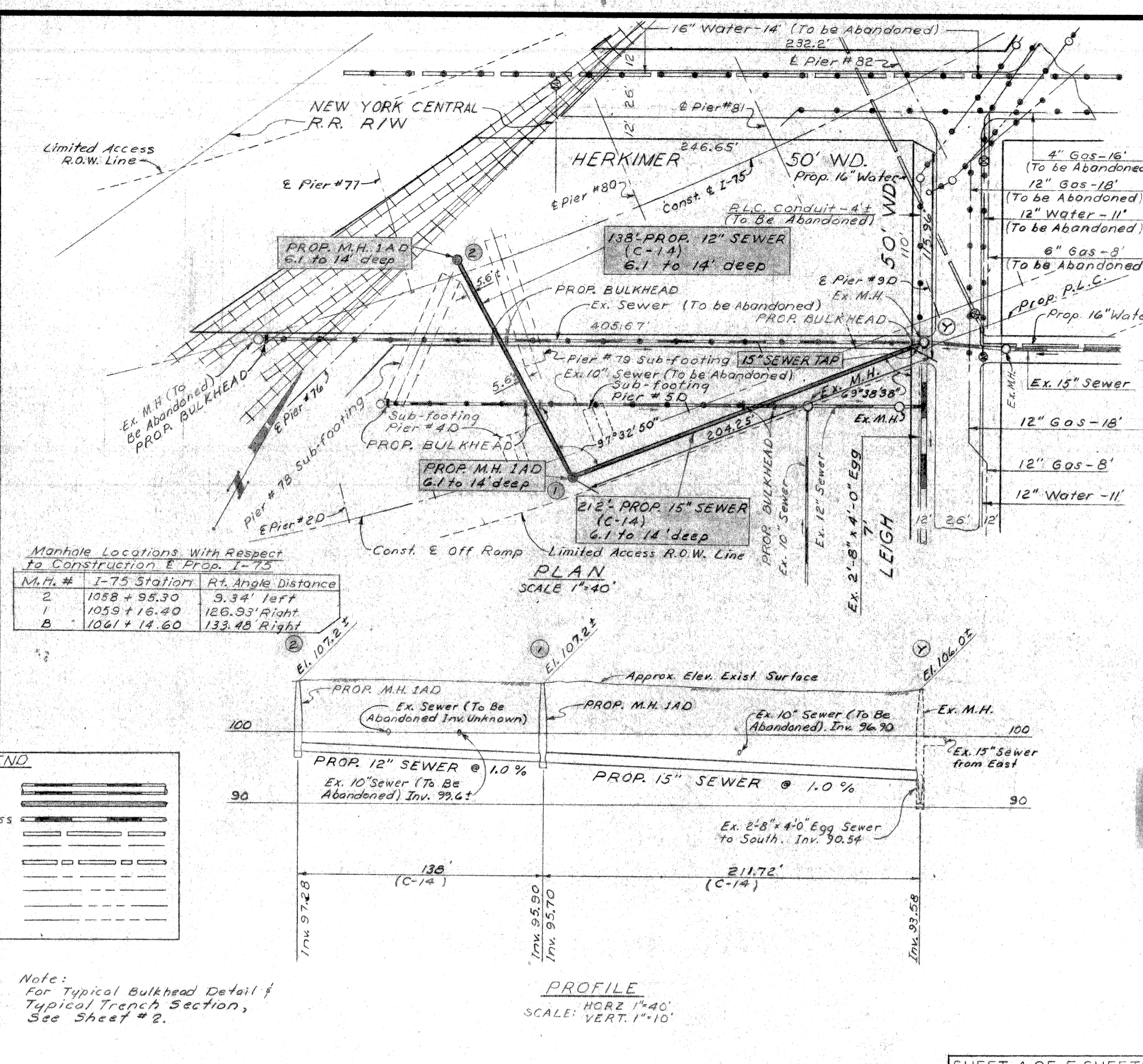
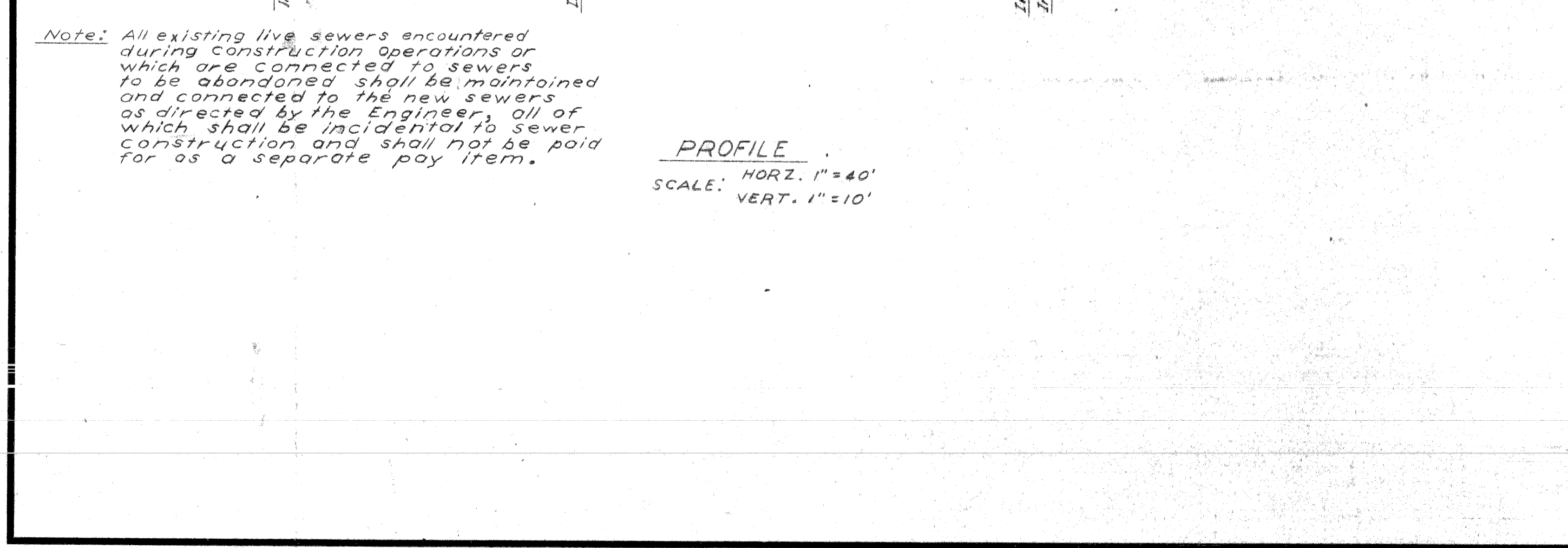
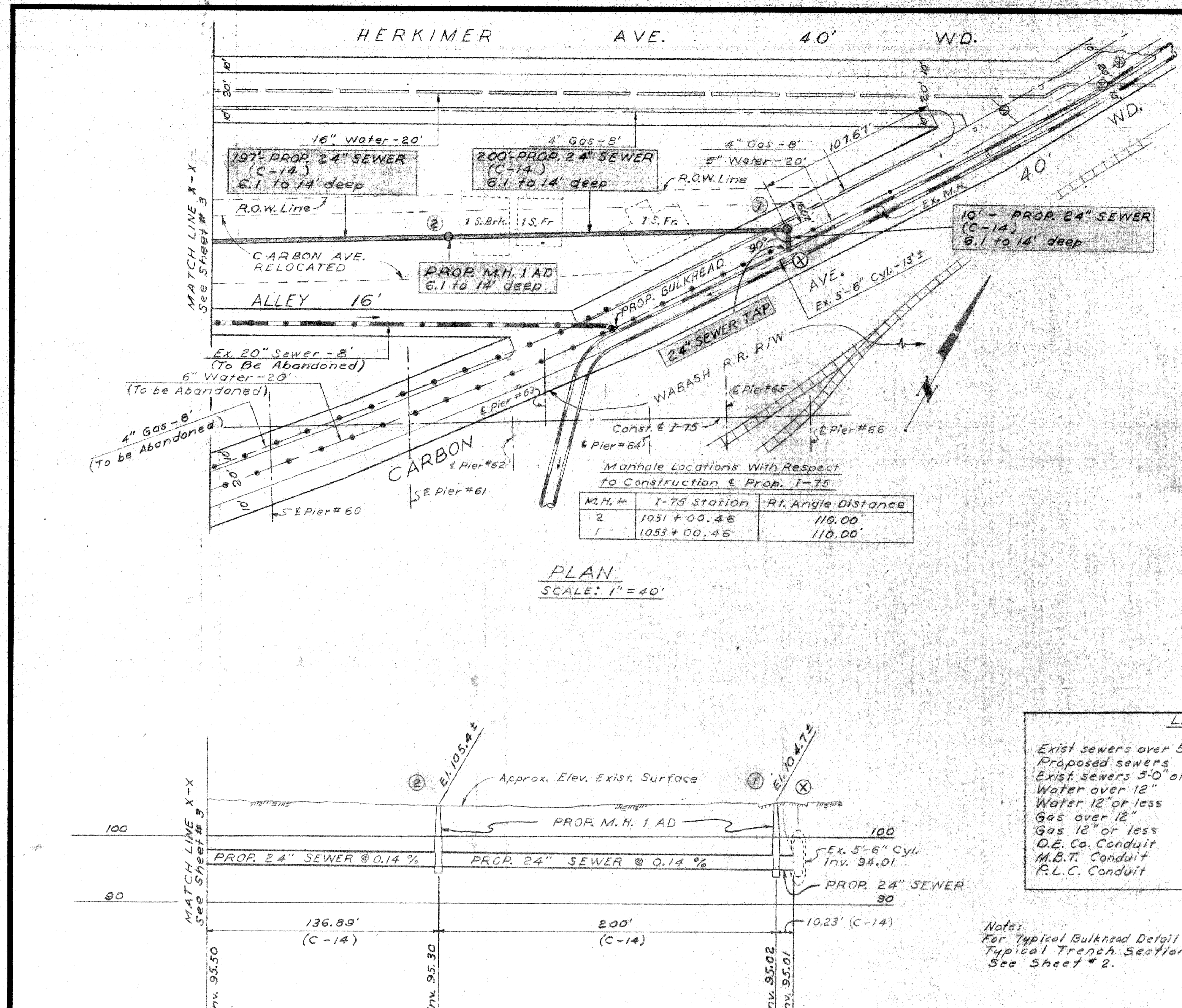
DESIGNED BY <i>A. Somerville</i>	APPROVED <i>R. Sinks</i> SR. ASSOC. ENGINEER
DRAWN BY <i>C. Gray</i>	<i>M. Kepler</i> ASST. CITY ENGINEER
CHECKED BY <i>A. S. Suter</i>	<i>Clyde L. Jaeger</i> CITY ENGINEER

MICHIGAN STATE HIGHWAY DEPARTMENT
FISHER EXPRESSWAY (I-75) OVER ROUGE RIVER
SEWER ALTERATIONS
NORTH OF CARBON FROM FORMAN TO EAST OF DEY

PLAN, PROFILE & DETAILS

REVISIONS			
NO.	DESCRIPTION	DATE	BY

SQUAD	
DRAWN BY	
TRACED BY	
CHECKED BY	
SHEET	



SHEET 4 OF 5 SHEETS

CITY OF DETROIT
DEPARTMENT OF PUBLIC WORKS

CITY ENGINEER'S OFFICE DATE 7-12-63

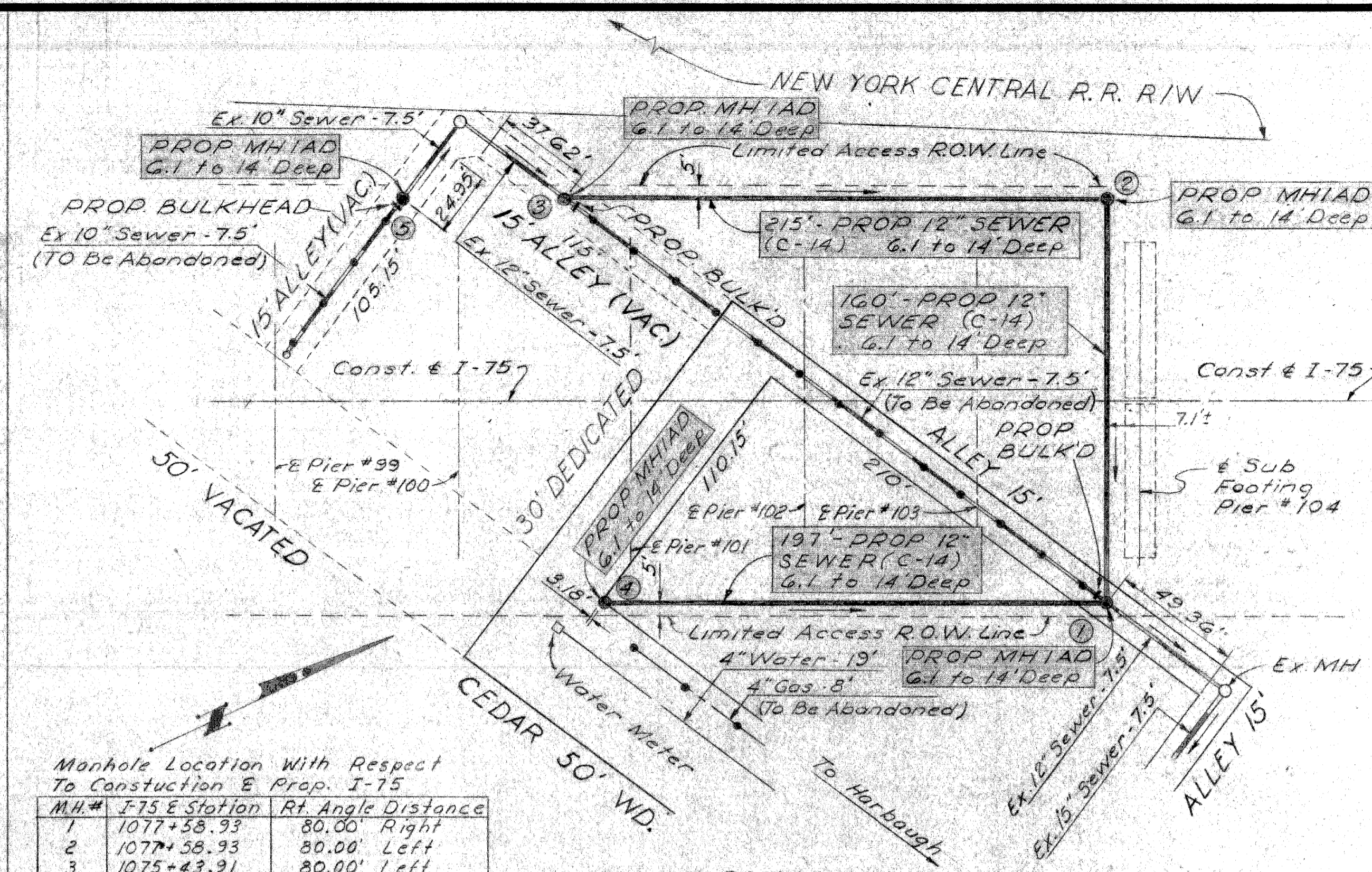
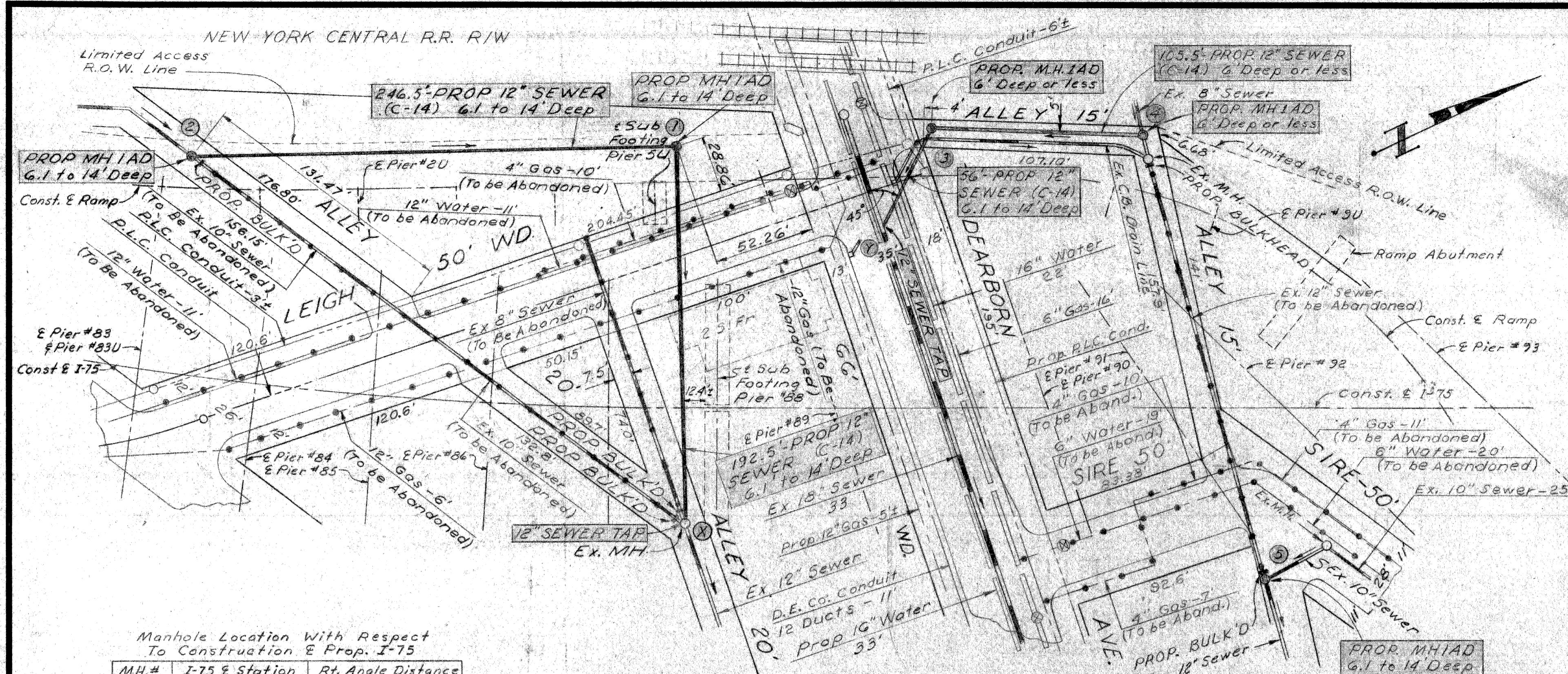
DESIGNED BY <i>A. Somerville</i>	APPROVED <i>D. Sinks</i> SR. ASSOC. ENGINEER
DRAWN BY <i>A. Stephens</i>	<i>W. J. Kepler</i> ASST. CITY ENGINEER
CHECKED BY <i>A. E. Duke</i>	<i>Clyde K. Palmer</i> CITY ENGINEER

MICHIGAN STATE HIGHWAY DEPARTMENT
FISHER EXPRESSWAY (I-75) OVER ROUGE RIVER
SEWER ALTERATIONS
NORTH OF CARBON FROM E. OF DEY TO HERKIMER
SOUTH OF HERKIMER BETWEEN NYCRR & LEIGH

PLAN & PROFILE

REVISIONS			
NO.	DESCRIPTION	DATE	BY

SQUAD BOSS	
DRAWN BY	
TRACED BY	
CHECKED BY	
SHEET	OF

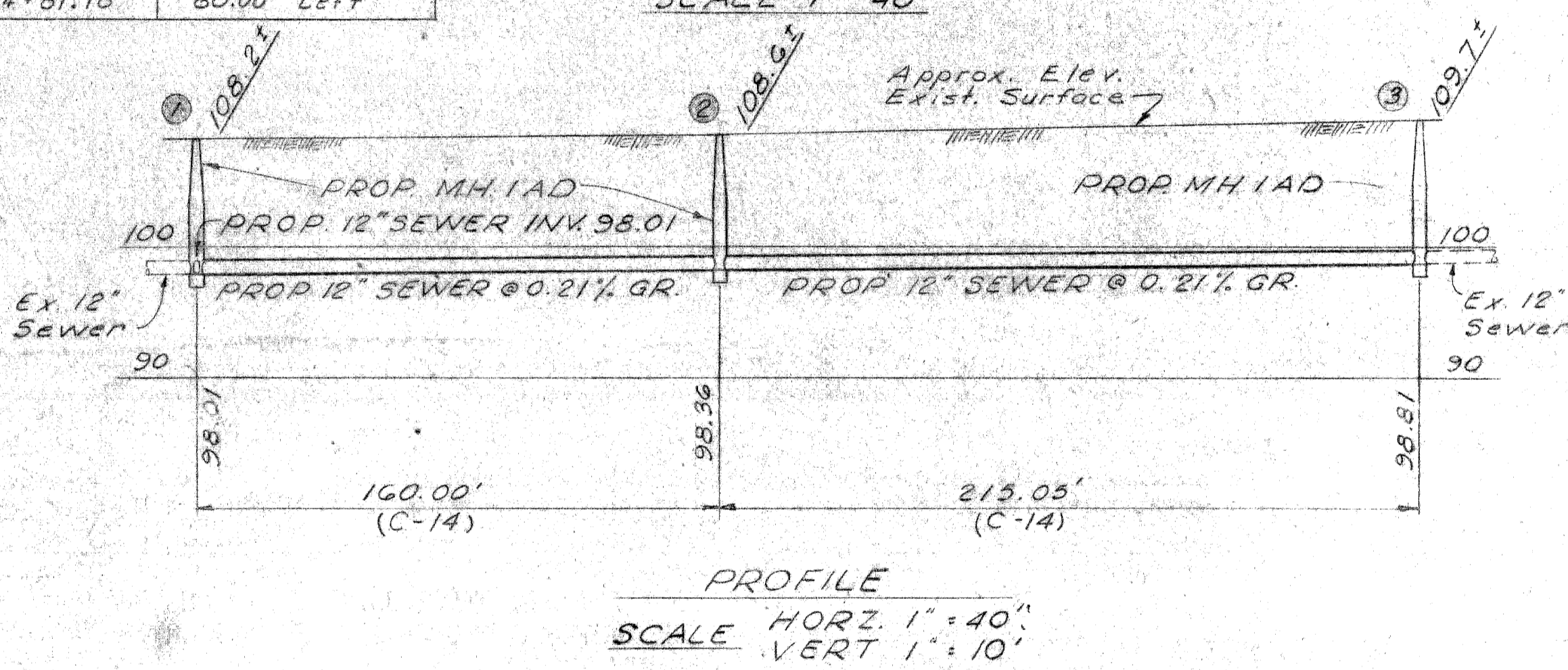
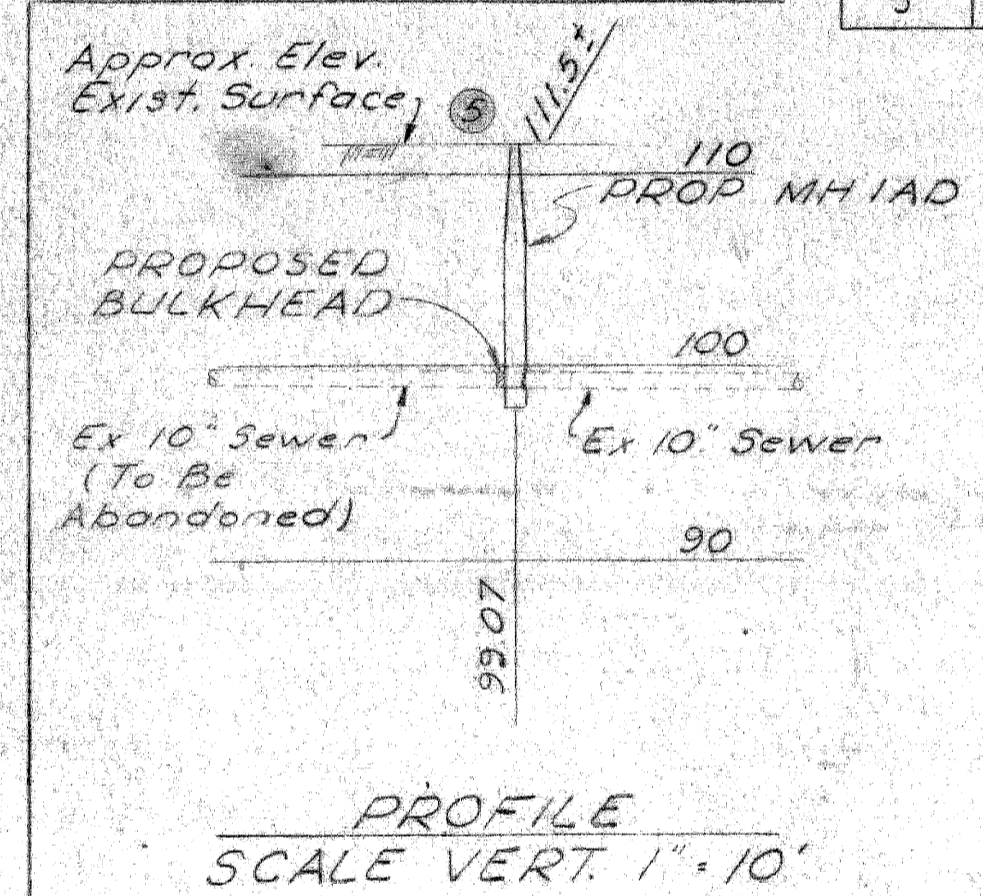
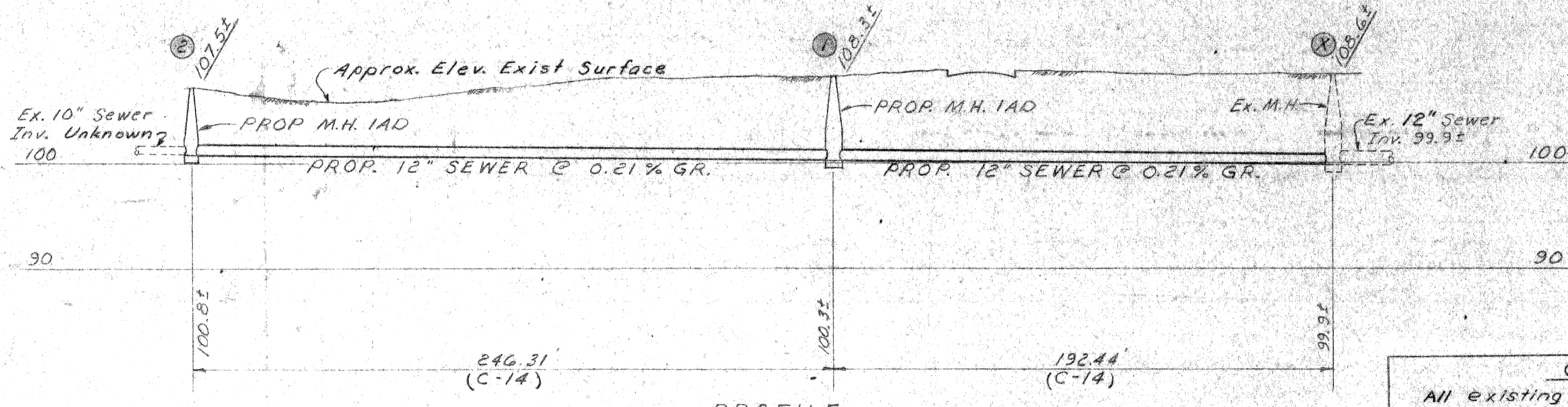


Manhole Location With Respect To Construction & Prop. I-75

M.H.#	I-75 Station	Rt. Angle	Distance
X	1065+05.19	59.78 Right	
1	1064+39.63	132.58 Left	
2	1062+37.80	108.34 Left	
3	1064+29.42	142.63 Left	
4	1067+34.98	139.03 Left	

Manhole Location With Respect To Construction & Prop. I-75

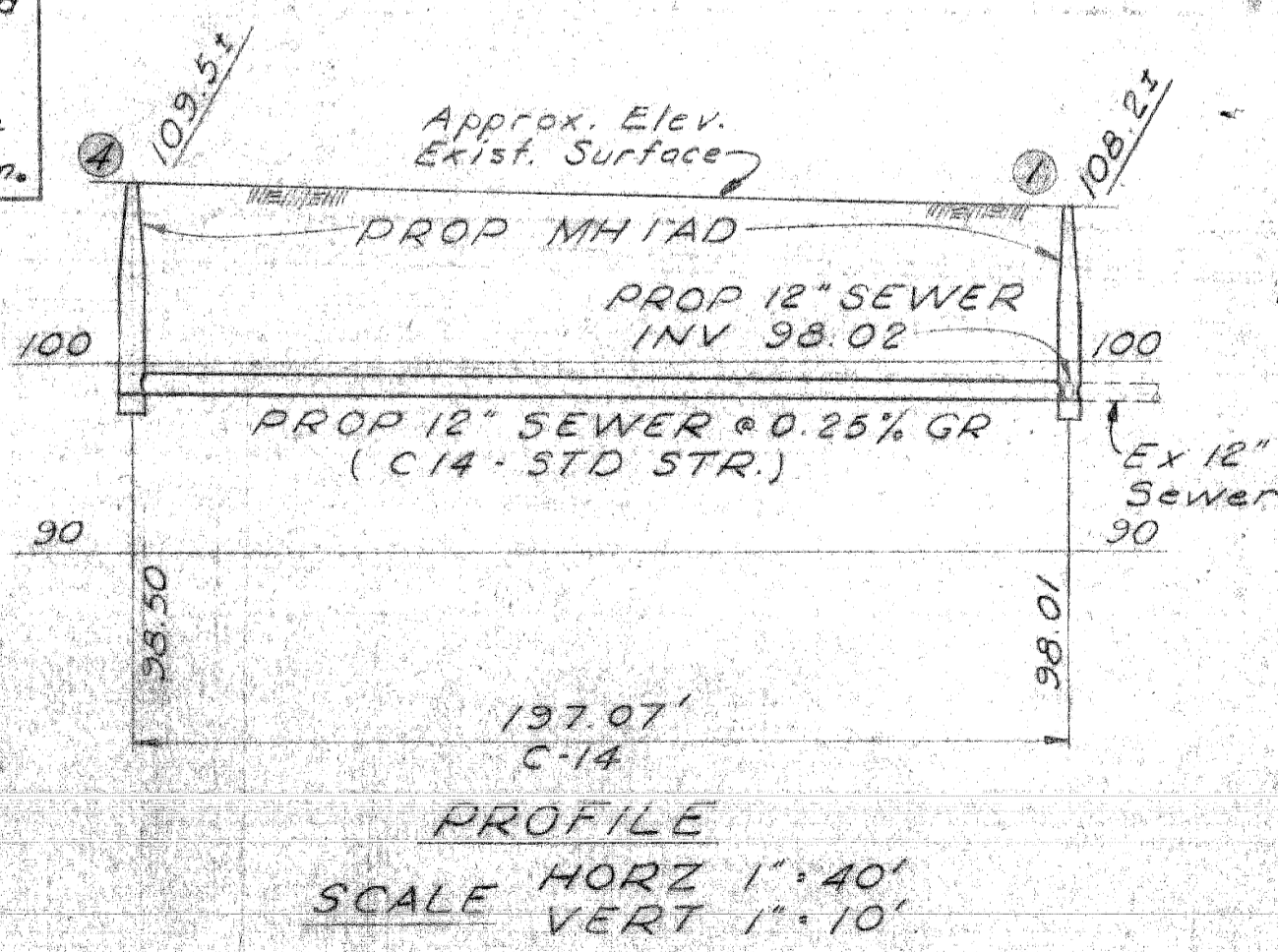
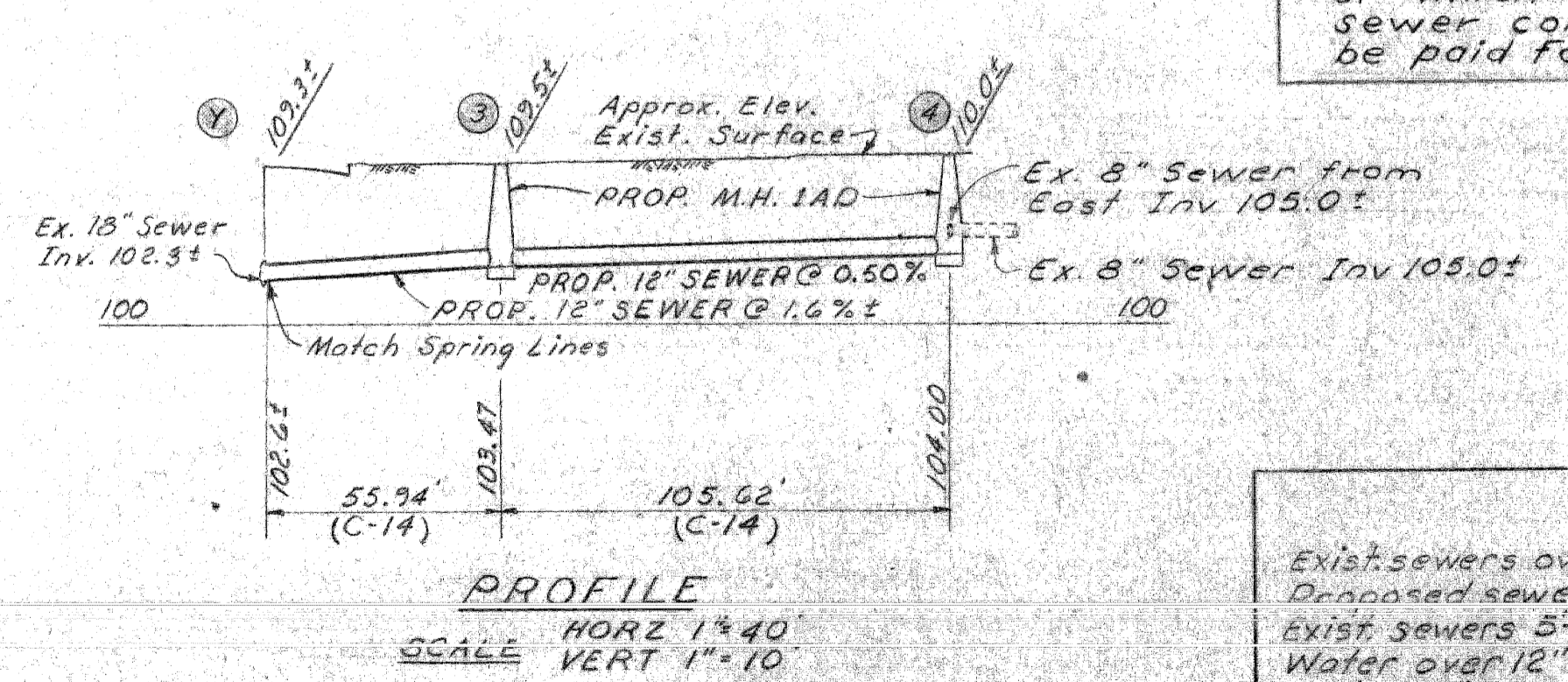
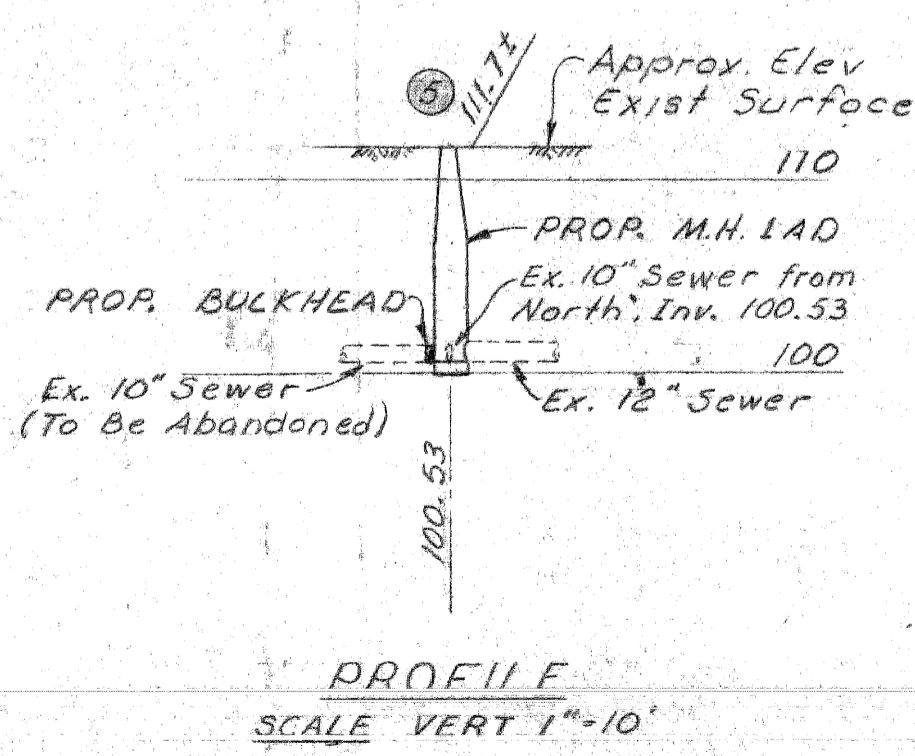
M.H.#	I-75 Station	Rt. Angle	Distance
1	1077+58.93	80.00 Right	
2	1077+58.93	80.00 Left	
3	1075+43.91	80.00 Left	
4	1075+61.86	80.00 Right	
5	1074+81.18	80.00 Left	



GENERAL NOTE:
All existing live sewers encountered during construction operations or which are connected to sewers to be abandoned shall be maintained and connected to the new sewers as directed by the Engineer, all of which shall be incidental to sewer construction and shall not be paid for as a separate pay item.

LEGEND

- Exist. sewers over 5'-0"
- Drainage sewers
- Exist. sewers 5'-0" or less
- Water over 12"
- Water 12" or less
- Gas over 12"
- Gas 12" or less
- D.E.C. Conduit
- M.B.T. Conduit
- R.L.C. Conduit



NOTE: For Typical Bulkhead Detail & Typical Trench Section See Sheet #2

NOTE: For Typical Bulkhead Detail & Typical Trench Section See Sheet #2

SHEET 5 OF 5 SHEETS

CITY OF DETROIT
DEPARTMENT OF PUBLIC WORKS

CITY ENGINEER'S OFFICE DATE 7-12-63

DESIGNED BY <i>A. Somerville</i>	APPROVED <i>R. Smith</i> SR. ASSOC. ENGINEER
DRAWN BY <i>A. Stephens</i>	<i>M. Kepler</i> ASST. CITY ENGINEER
CHECKED BY <i>L.E. Suka</i>	<i>Clyde L. Palmer</i> CITY ENGINEER

MICHIGAN STATE HIGHWAY DEPARTMENT
FISHER EXPRESSWAY (I-75) OVER ROUGE RIVER
SEWER ALTERATIONS
N & S OF DEARBORN BETWEEN NYCRR AND HERKIMER
CEDAR BETWEEN NYCRR AND HARBAUGH

PLAN & PROFILE

NO.	DESCRIPTION	DATE	BY

DROWN BY	
TRACED BY	
CHECKED BY	
SHEET	