

MICHIGAN STATE HIGHWAY DEPARTMENT
FISHER EXPRESSWAY (I-75) OVER ROUGE RIVER
SEWER ALTERATIONS
SOUTH OF PLEASANT BETWEEN FORT ST. AND PATRICIA

SHEET 1 OF 5 SHEETS

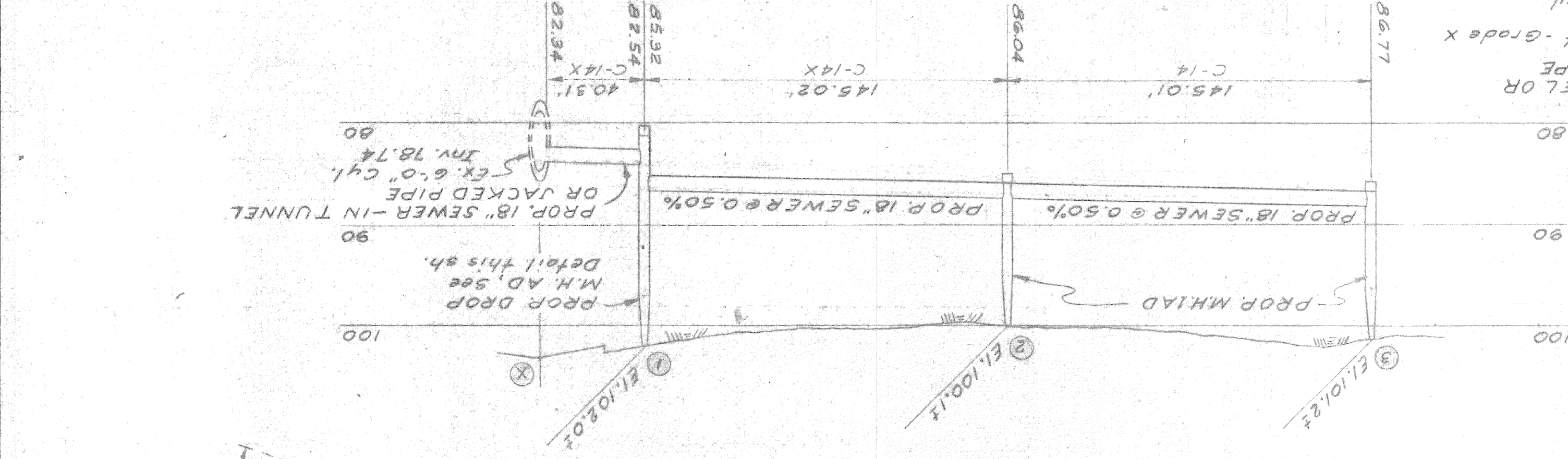
NO.	DESCRIPTION	DATE	BY

CITY OF DETROIT
 DEPARTMENT OF PUBLIC WORKS
 CITY ENGINEERS OFFICE
 DATE 7-12-63

Designed by *A. Gammill*
 Drawn by *A. Johnson*
 Checked by *J.C. Burke*

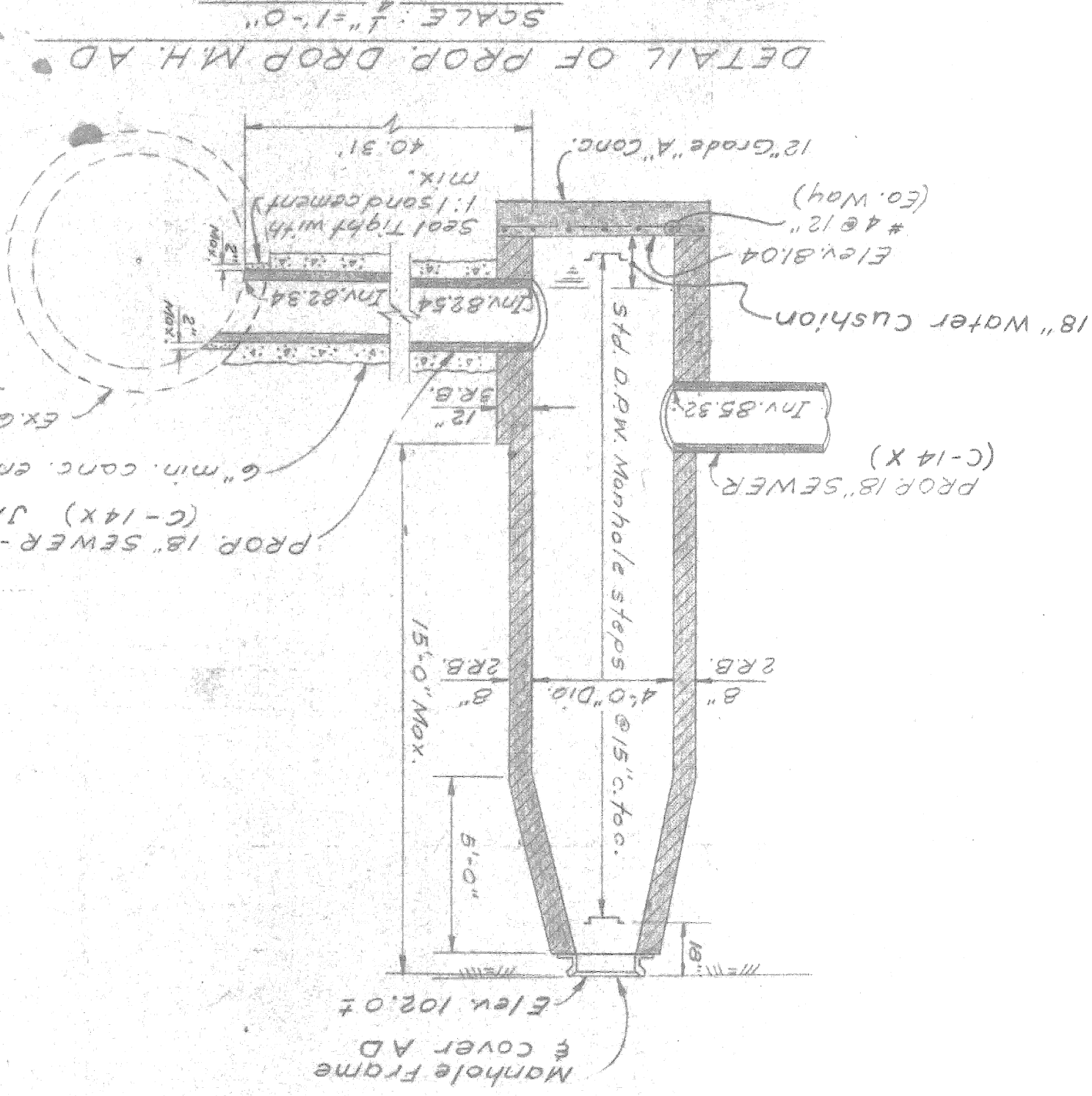
Approved by *J.C. Burke*
 Sr. Assoc. Engineer
 City Engineer

Note: All existing live sewers encountered during construction operations of which are connected to sewers to be abandoned shall be maintained and connected to the new sewers as directed by the Engineer, all of which shall be incidental to sewer construction and shall not be paid for as a separate pay item.



Manhole Location with Respect to Construction & Prop. I-15

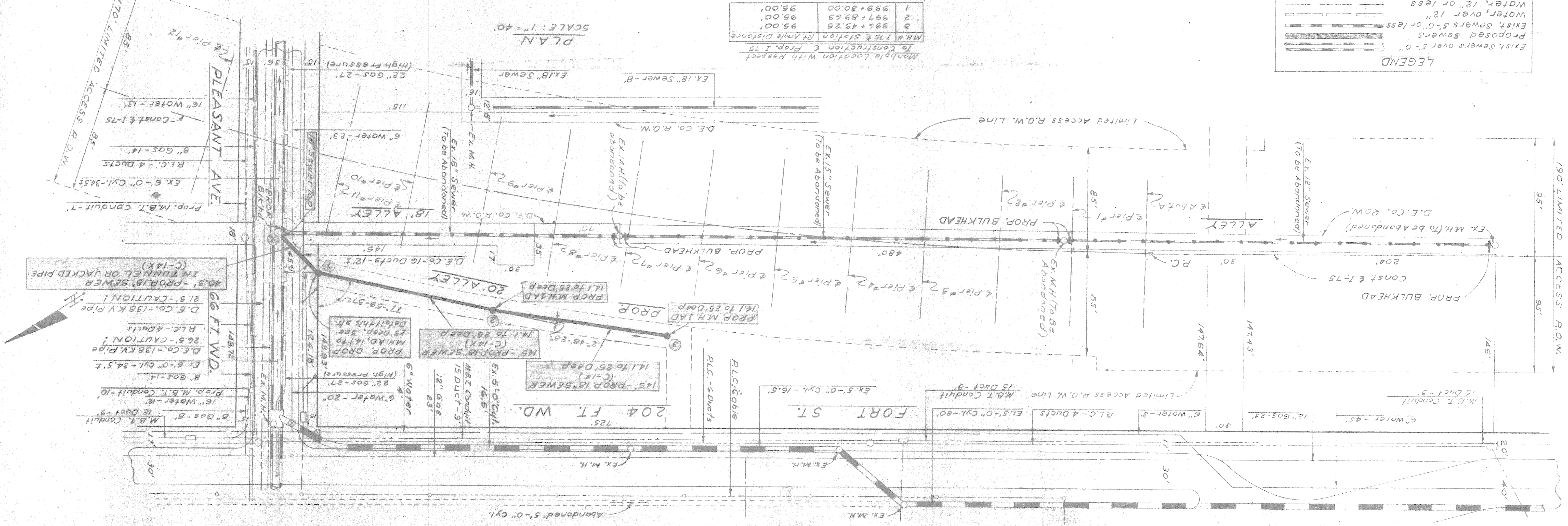
M.H. #	I-15 Station	Rt. Angle Distance
1	996 + 30.00	95.00'
2	997 + 89.63	95.00'
3	996 + 47.25	95.00'
4	997 + 30.00	95.00'



LEGEND

	Proposed Sewers
	Exist. Sewers 5'-0" or less
	Exist. Sewers 5'-0" or less
	Water, 12" or less
	Gas, 12" or less
	D.E. Co. Conduit
	M.B.T. Conduit
	P.L.C. Conduit

Note: For Typical Bulkhead Detail & Typical Trench Section, See Sheet #2.



MICHIGAN STATE HIGHWAY DEPARTMENT
 FISHER EXPRESSWAY (I-75) OVER ROUGE RIVER
 SEWER ALTERATIONS
 SOUTH OF SANDERS BETWEEN PATRICIA AND LIEBOLD

CITY ENGINEER'S OFFICE
 DESIGNED BY: *A. Bernwardt*
 SR. ASSOC. ENGINEER
 DRAWN BY: *J. Eaton*
 ASST. CITY ENGINEER
 CHECKED BY: *J. S. Miller*
 CITY ENGINEER

DATE: 7-12-63
 APPROVED: *R. Sinks*

DEPARTMENT OF PUBLIC WORKS
 CITY OF DETROIT

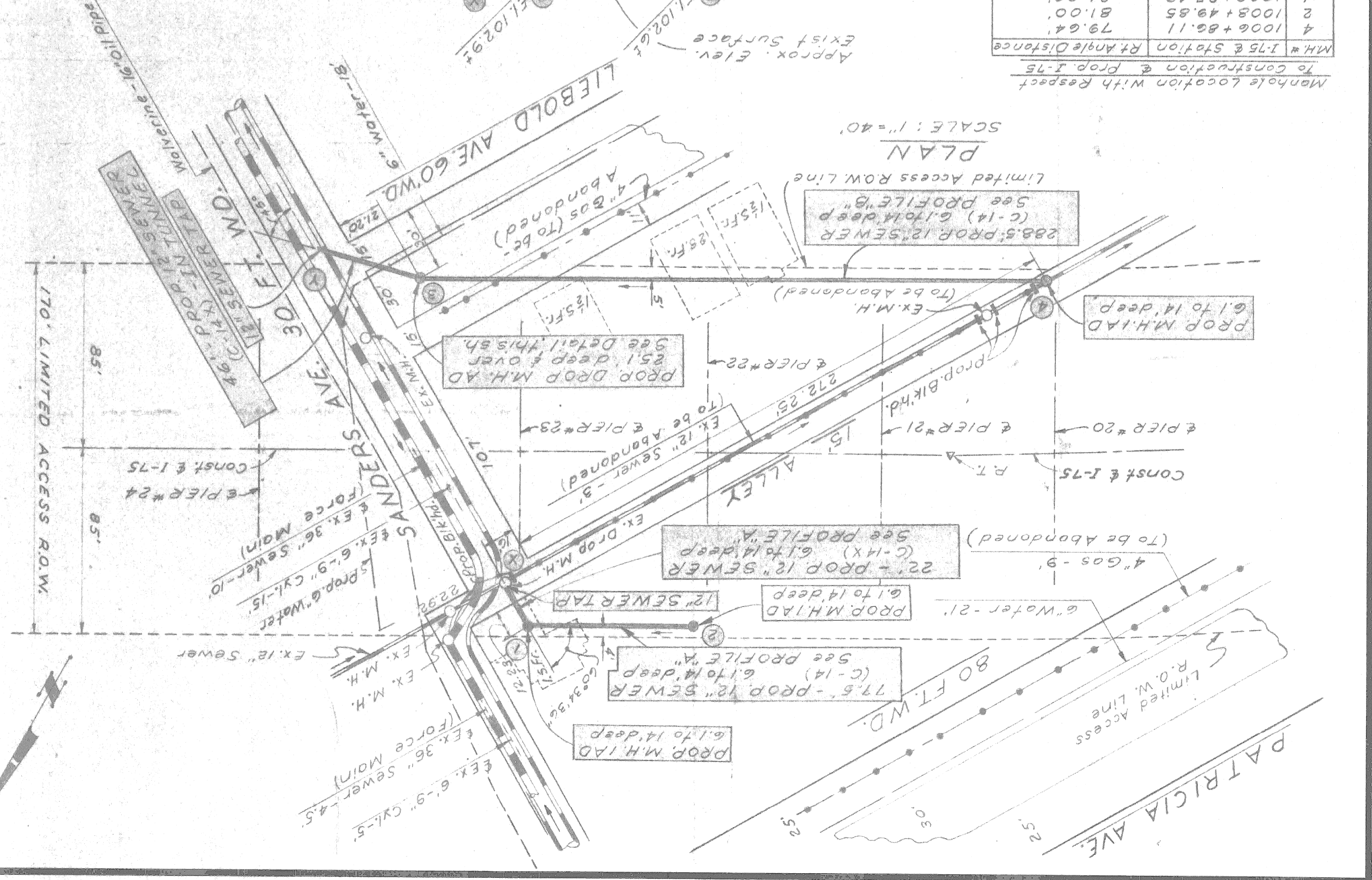
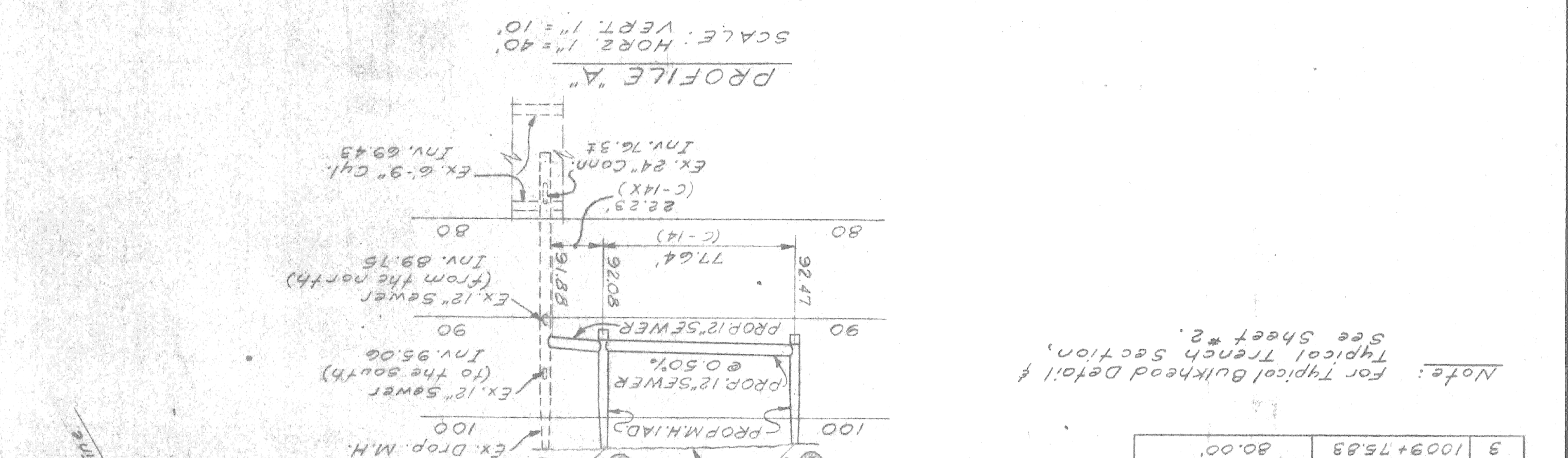
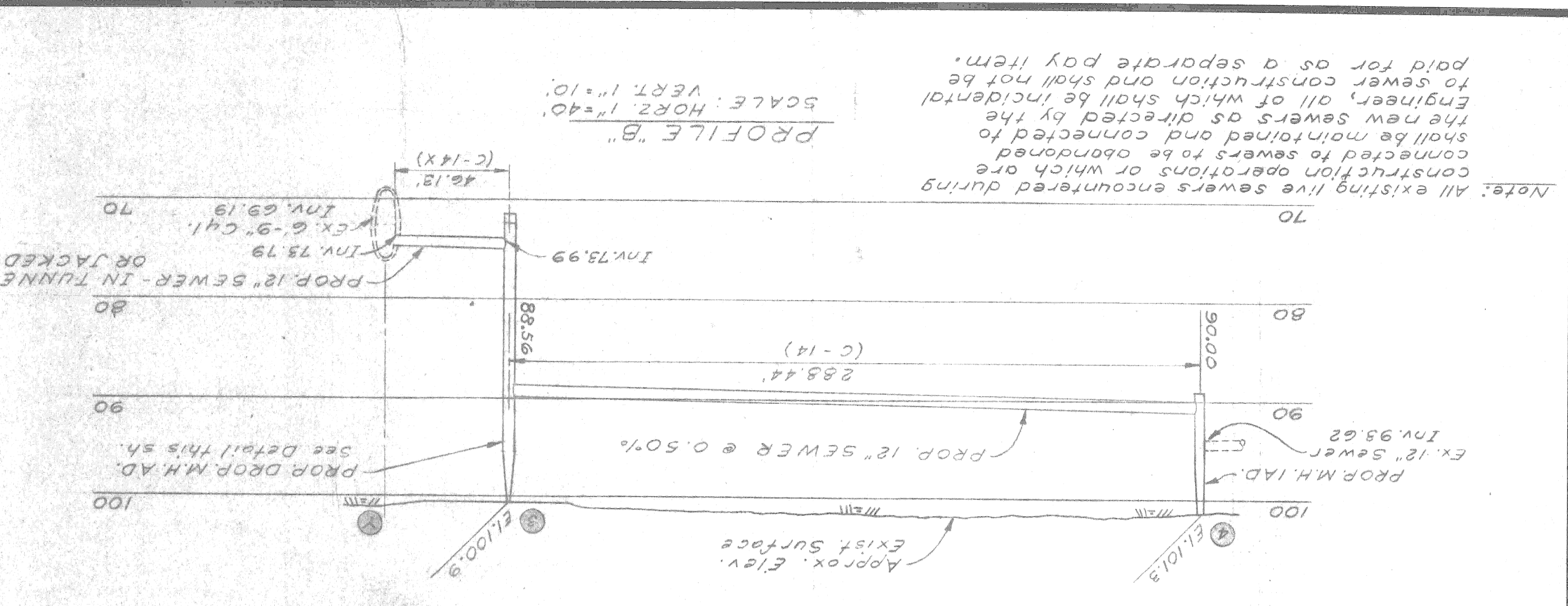
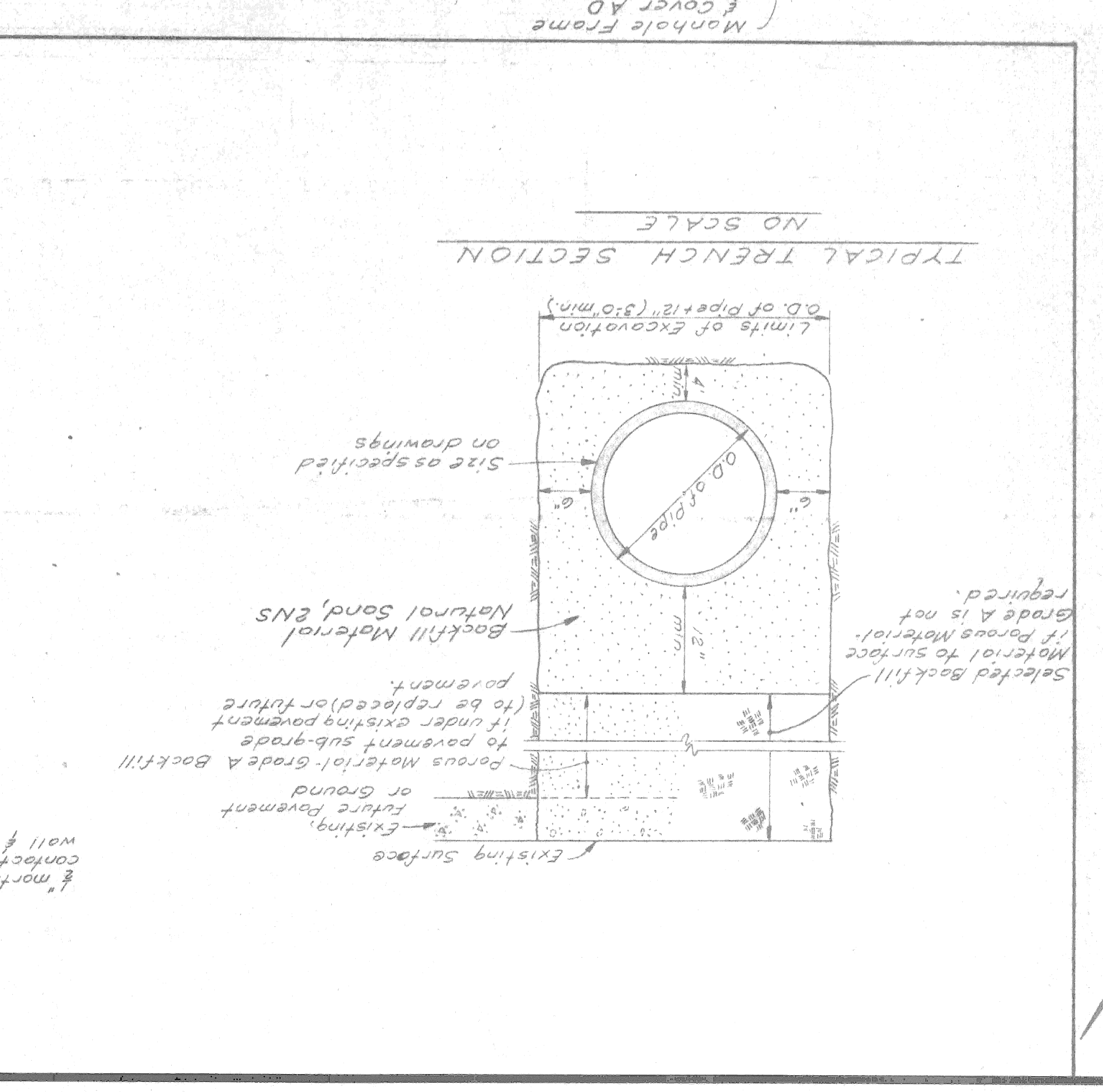
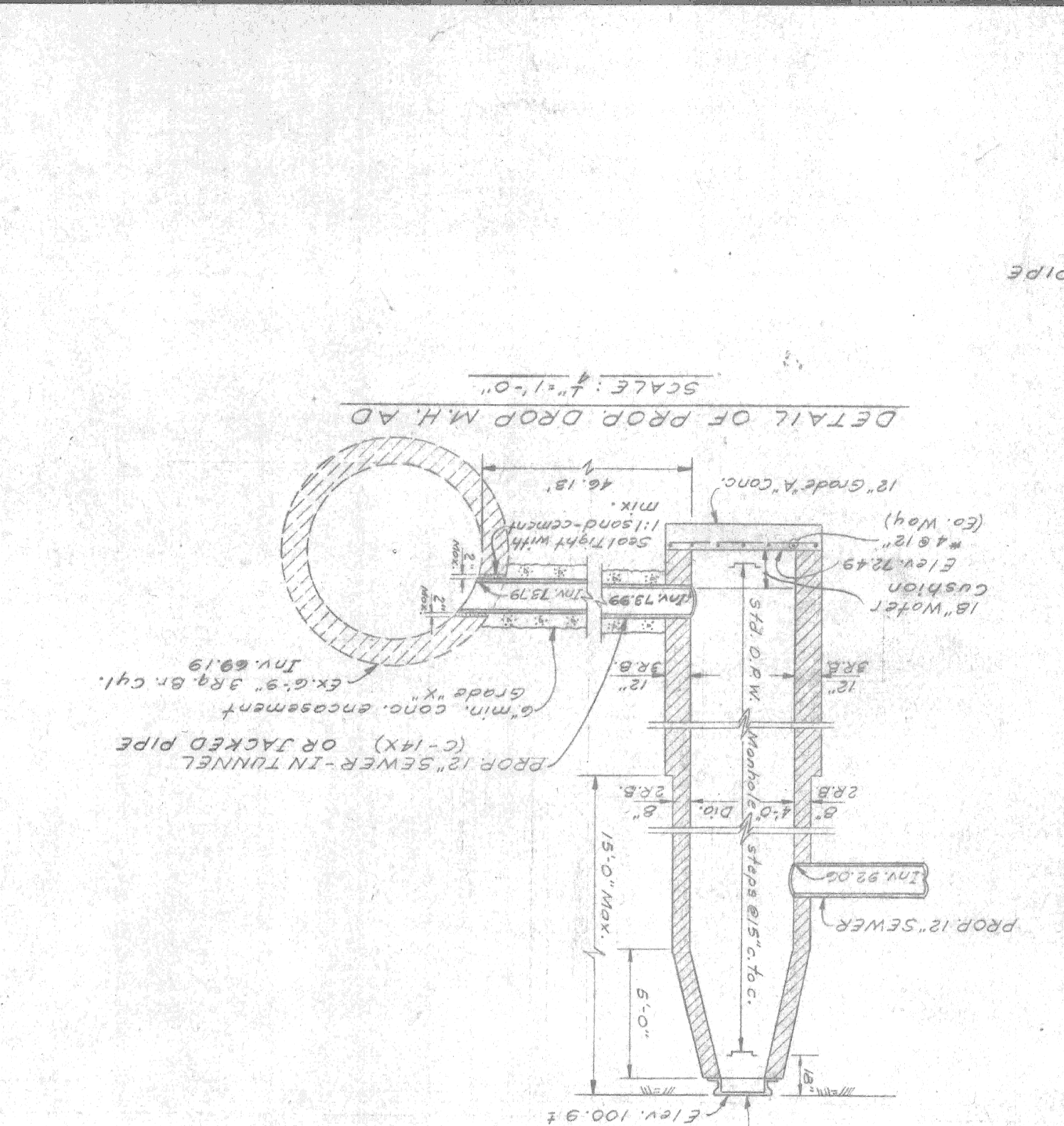
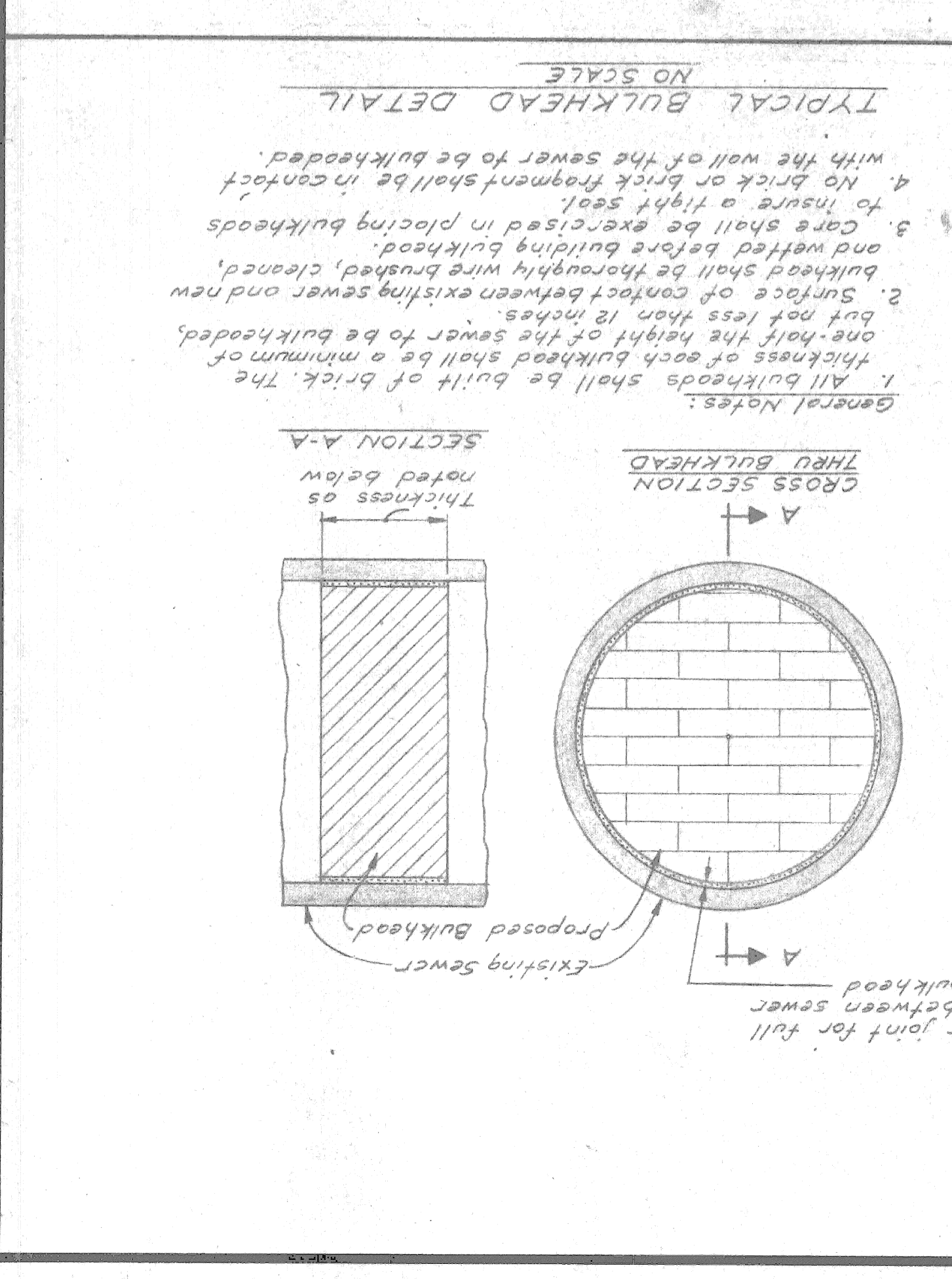
SHEET 2 OF 5 SHEETS

PL. PLAN, PROFILE & DETAILS

NO. _____ DATE _____ REVISIONS _____

LEGEND

	Exst. Sewers over 5'-0"
	Proposed Sewers
	Exst. Sewers 5'-0" or less
	Water, over 12"
	Water, over 12"
	Gos, over 12"
	Gos, 12" or less
	D.E. CO. Conduit
	M.B.T. Conduit
	P.L.C. Conduit

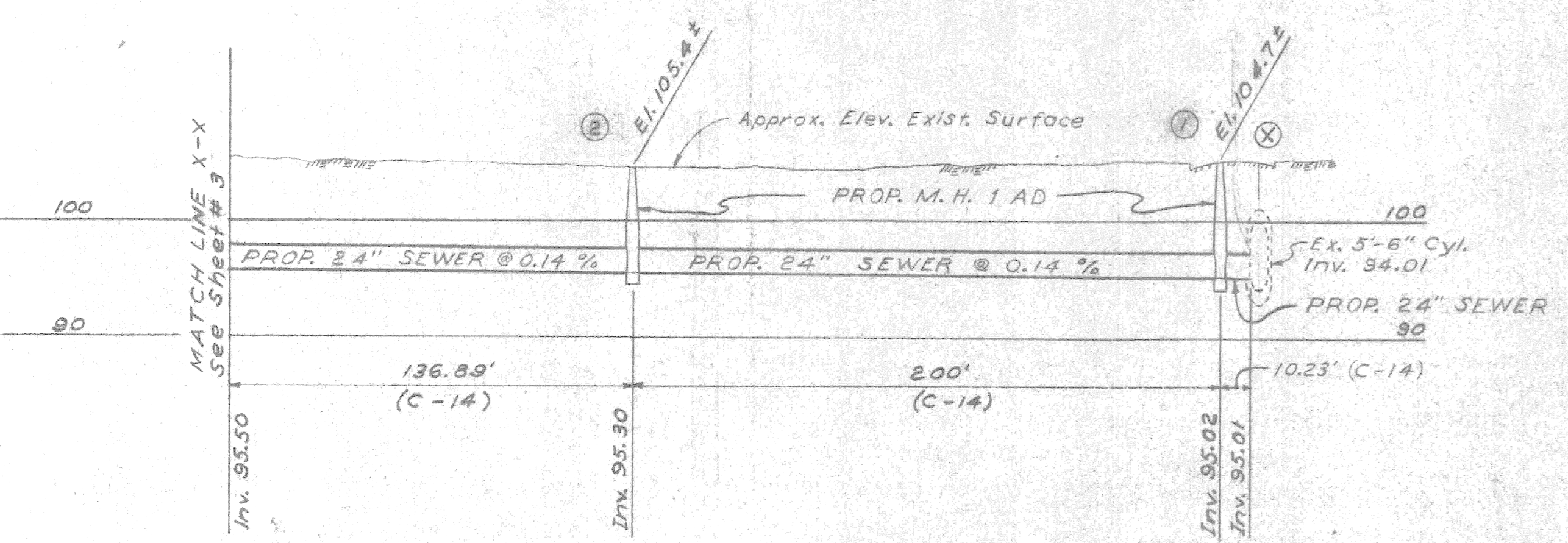
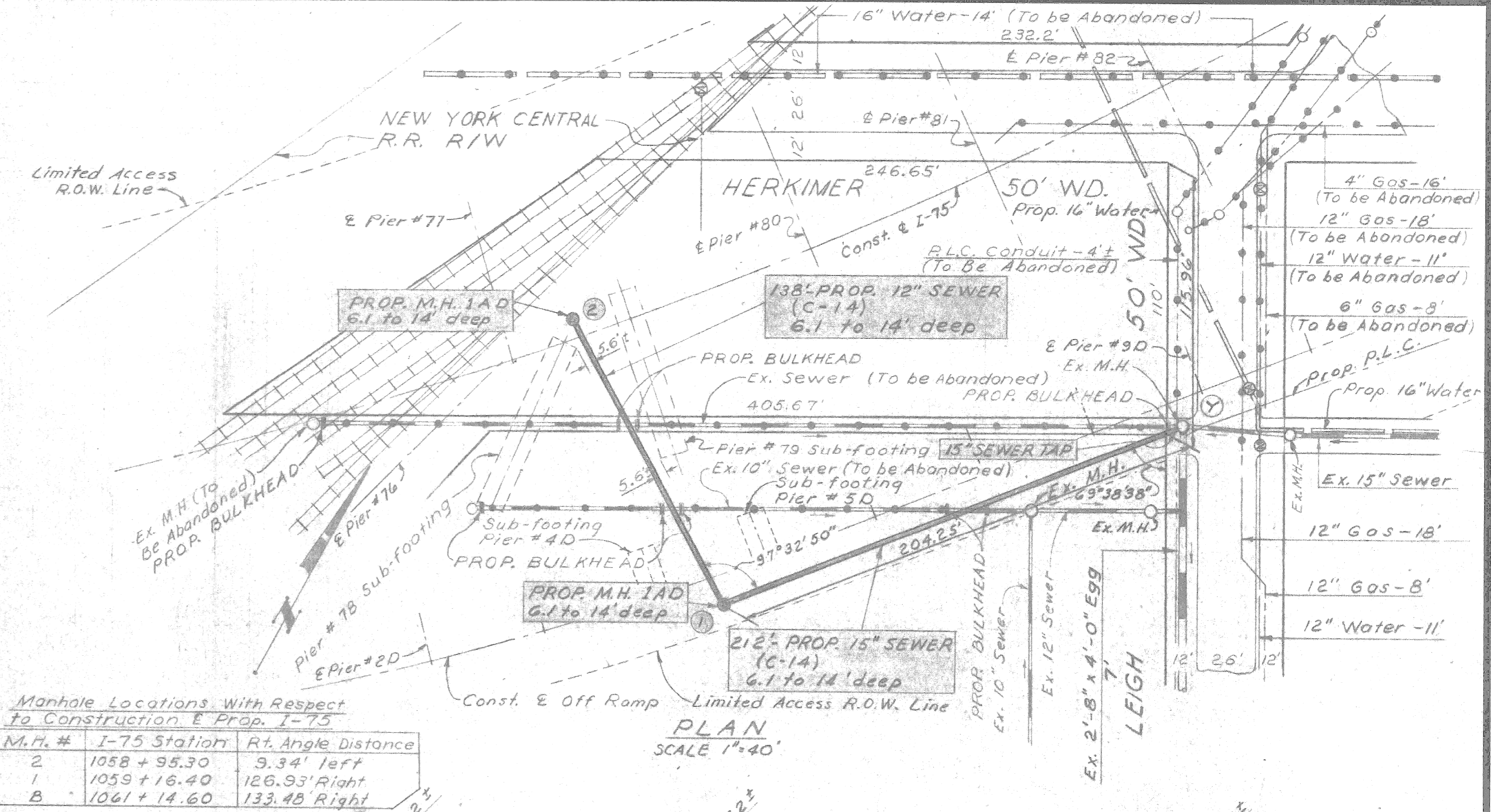
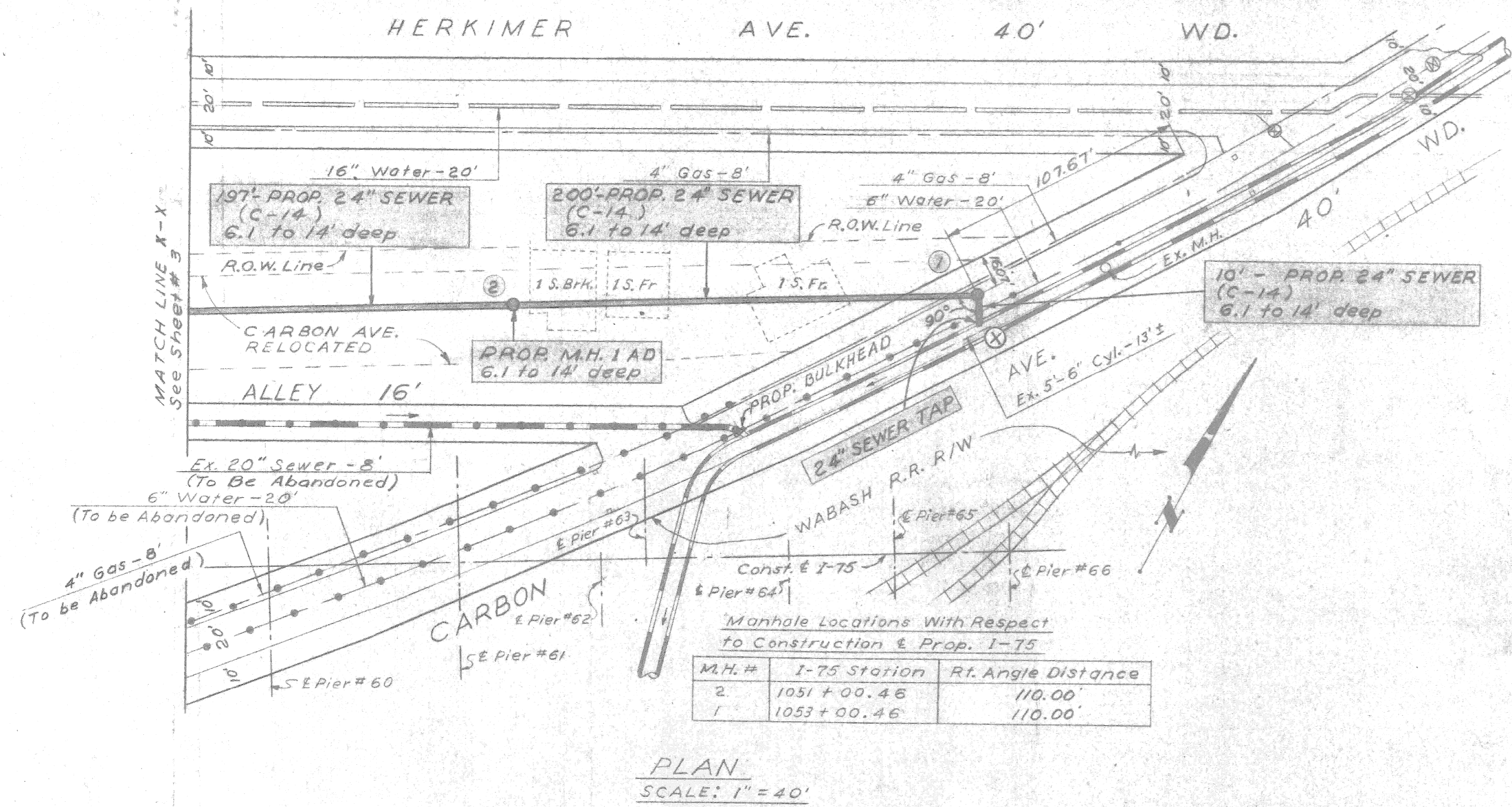


Note: All existing live sewers encountered during construction operations of which are connected to sewers to be abandoned shall be maintained and connected to the new sewers as directed by the Engineer, all of which shall be incidental to sewer construction and shall not be paid for as a separate pay item.

Note: For Typical Bulkhead Detail & Typical Trench Section, See Sheet #2.

Manhole Location with Respect to Construction & Prop. I-75

M.H. #	I-75 Station	Rt. Angle Distance	Elev.	Depth
1	1009+27.49		81.00'	80.00'
2	1008+49.85		81.00'	79.64'
4	1006+88.11		81.00'	80.00'
3	1009+75.83		80.00'	80.00'

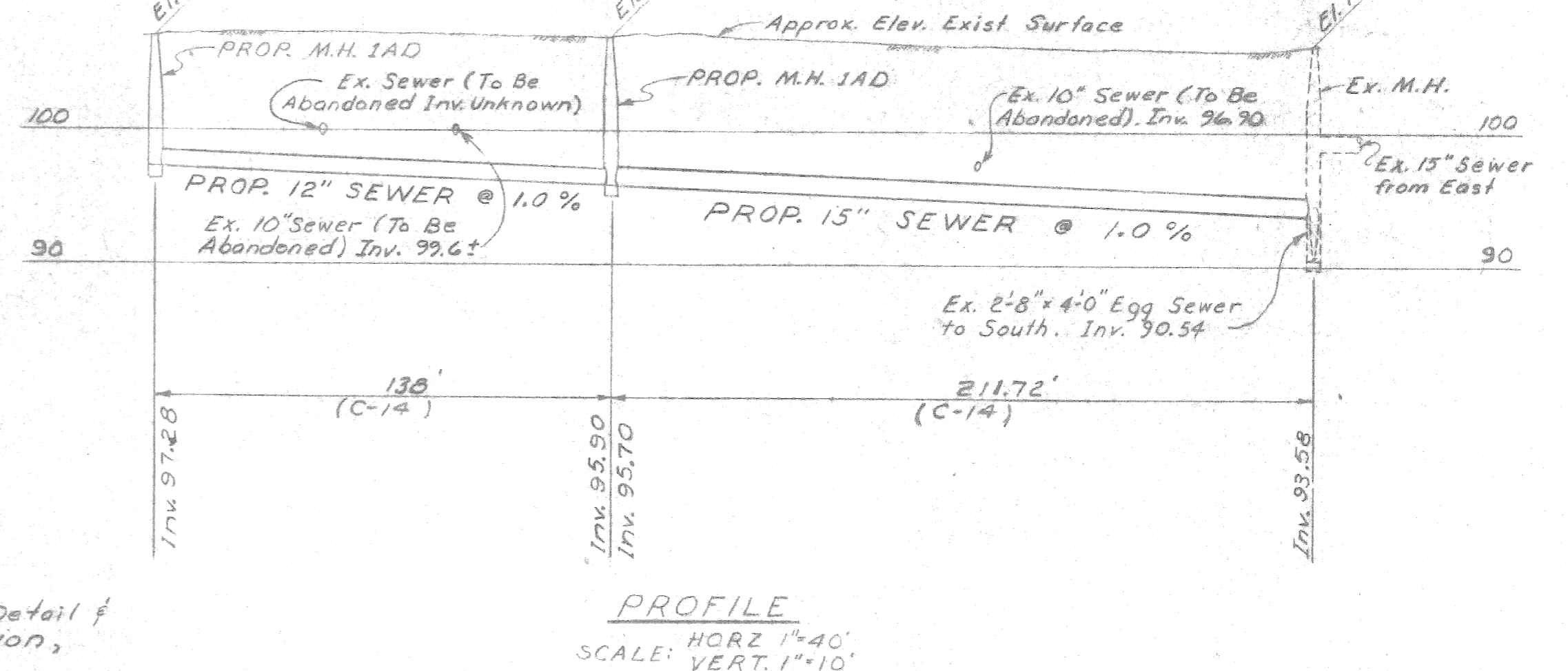


LEGEND

- Exist sewers over 5'-0"
- Proposed sewers
- Exist sewers 5'-0" or less
- Water 12" or less
- Gas over 12"
- Gas 12" or less
- O.E. Co. Conduit
- M.B.T. Conduit
- R.L.C. Conduit

Note: For Typical Bulkhead Detail & Typical Trench Section, See Sheet # 2.

Note: For Typical Bulkhead Detail & Typical Trench Section, See Sheet # 2.



Note: All existing live sewers encountered during construction operations or which are connected to sewers to be abandoned shall be maintained and connected to the new sewers as directed by the Engineer, all of which shall be incidental to sewer construction and shall not be paid for as a separate pay item.

Note: All existing live sewers encountered during construction operations or which are connected to sewers to be abandoned shall be maintained and connected to the new sewers as directed by the Engineer, all of which shall be incidental to sewer construction and shall not be paid for as a separate pay item.

SHEET 4 OF 5 SHEETS

CITY OF DETROIT
DEPARTMENT OF PUBLIC WORKS

CITY ENGINEER'S OFFICE DATE 7-12-63

DESIGNED BY <i>A. Somerville</i>	APPROVED <i>R. Sinks</i> SR. AS SOC. ENGINEER
DRAWN BY <i>A. Stephens</i>	<i>W. J. Kepler</i> ASST. CITY ENGINEER
CHECKED BY <i>L. E. Duke</i>	<i>Ceylan K. Palmer</i> CITY ENGINEER

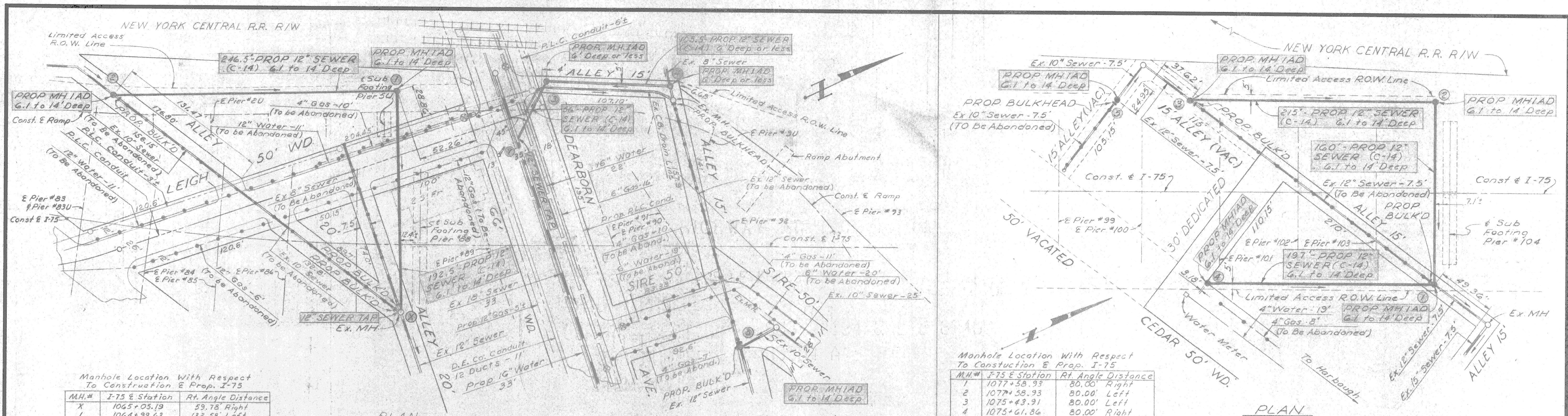
MICHIGAN STATE HIGHWAY DEPARTMENT
FISHER EXPRESSWAY (I-75) OVER ROUGE RIVER
SEWER ALTERATIONS

NORTH OF CARBON FROM E. OF DEY TO HERKIMER
SOUTH OF HERKIMER BETWEEN NYCRR & LEIGH

PLAN & PROFILE

NO.	DESCRIPTION	DATE	BY

SHOAO BOSS	
DRAWN BY	
TRACED BY	
CHECKED BY	
SHEET	

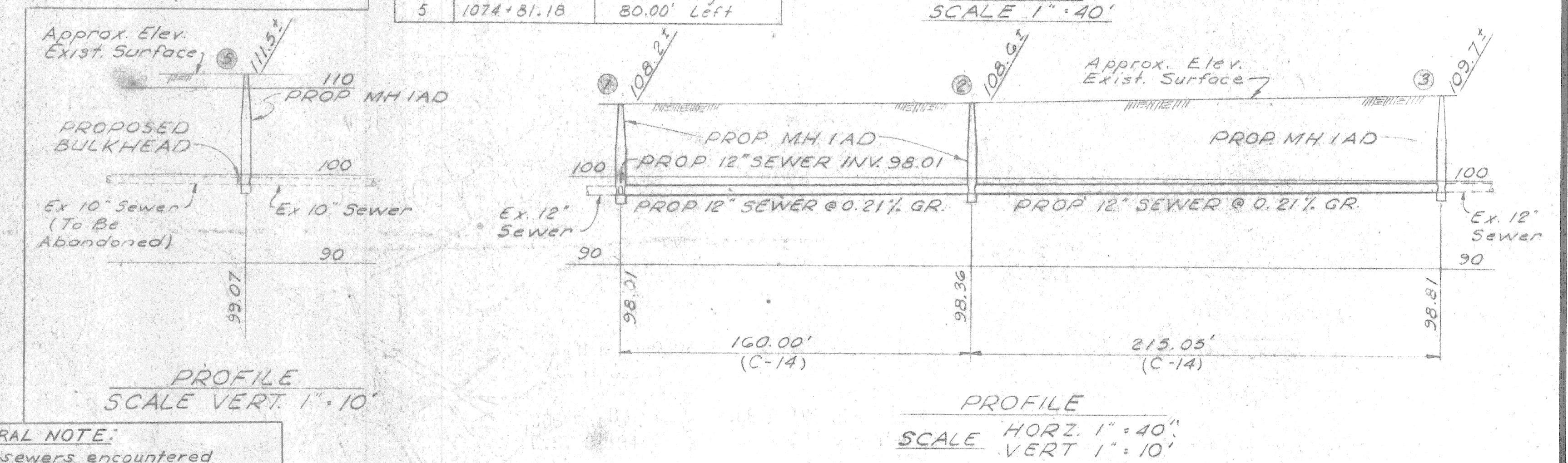
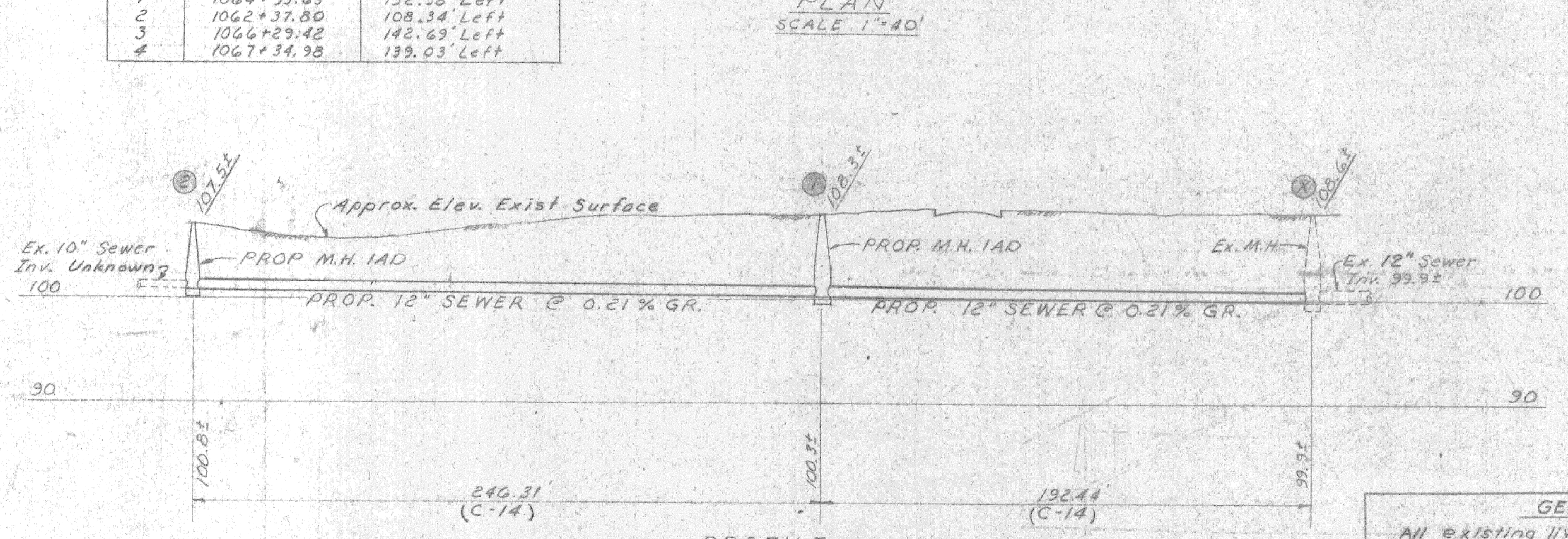


Manhole Location With Respect To Construction & Prop. I-75

M.H.#	I-75 Station	Rt. Angle Distance
X	1065+05.19	59.78' Right
1	1064+39.63	132.58' Left
2	1062+37.80	108.34' Left
3	1066+29.42	142.69' Left
4	1067+34.98	139.03' Left

Manhole Location With Respect To Construction & Prop. I-75

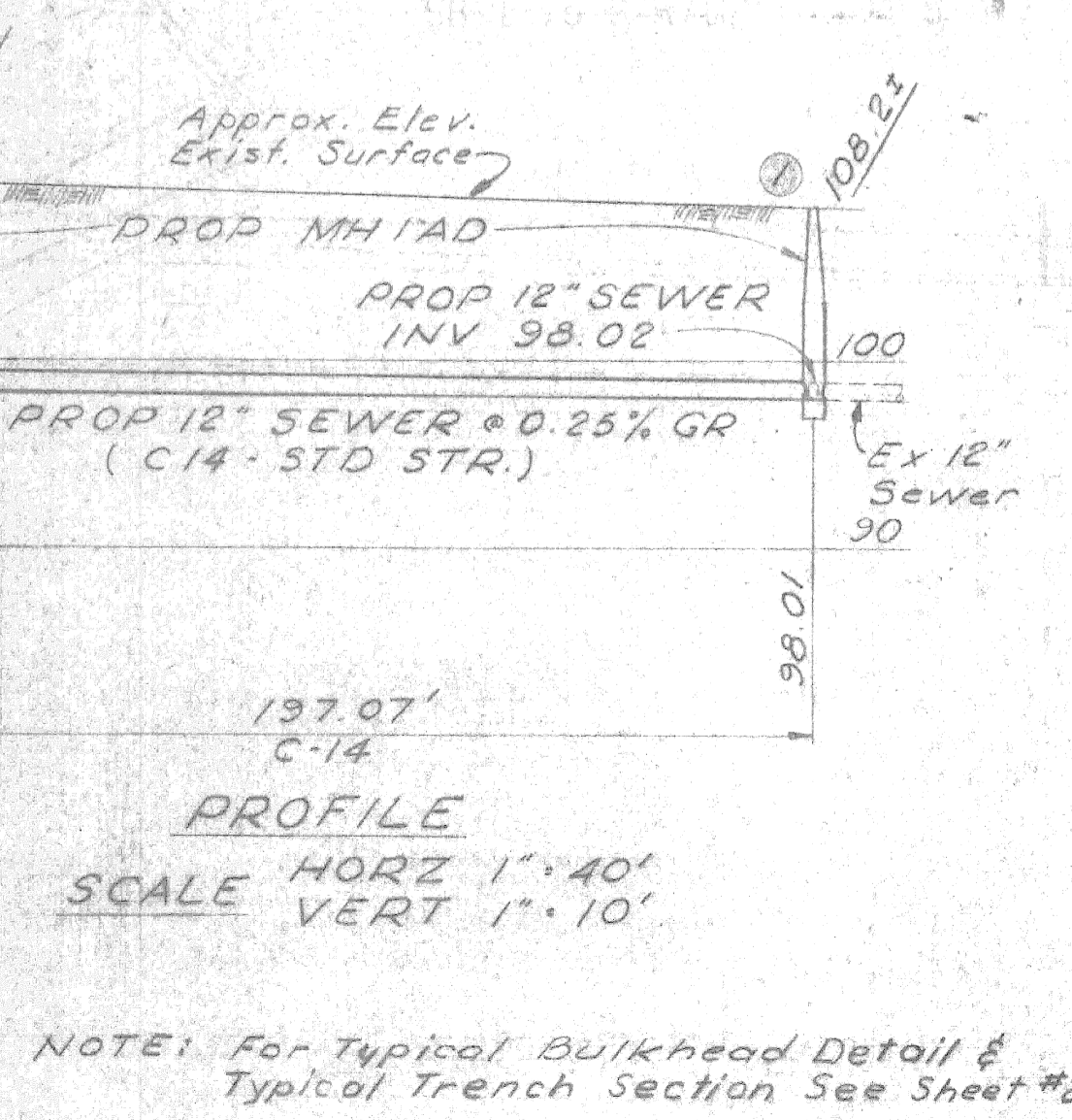
M.H.#	I-75 Station	Rt. Angle Distance
1	1077+58.93	80.00' Right
2	1077+58.93	80.00' Left
3	1075+43.91	80.00' Left
4	1075+61.86	80.00' Right
5	1074+81.18	80.00' Left



GENERAL NOTE:
 All existing live sewers encountered during construction operations or which are connected to sewers to be abandoned shall be maintained and connected to the new sewers as directed by the Engineer, all of which shall be incidental to sewer construction and shall not be paid for as a separate pay item.

LEGEND

Exist. sewers over 5'-0"	[Symbol]
Proposed sewers	[Symbol]
Exist. sewers 5'-0" or less	[Symbol]
Water over 12"	[Symbol]
Water 12" or less	[Symbol]
Gas over 12"	[Symbol]
Gas 12" or less	[Symbol]
D.E. Co. Conduit	[Symbol]
M.B.T. Conduit	[Symbol]
P.L.C. Conduit	[Symbol]



NOTE: For Typical Bulkhead Detail & Typical Trench Section See Sheet #2

NOTE: For Typical Bulkhead Detail & Typical Trench Section See Sheet #2

SHEET 5 OF 5 SHEETS

CITY OF DETROIT
 DEPARTMENT OF PUBLIC WORKS
 CITY ENGINEER'S OFFICE DATE 7-12-63

DESIGNED BY *A. Lamoreaux* APPROVED *D. Sinks*
 SR. ASSOC. ENGINEER

DRAWN BY *A. Stephens* ASST. CITY ENGINEER
 CHECKED BY *L.E. Suka* CITY ENGINEER

MICHIGAN STATE HIGHWAY DEPARTMENT
 FISHER EXPRESSWAY (I-75) OVER ROUGE RIVER
 SEWER ALTERATIONS
 N & S OF DEARBORN BETWEEN NYCRR AND HERKIMER
 CEDAR BETWEEN NYCRR AND HARBAUGH
 PLAN & PROFILE

REVISIONS			
NO.	DESCRIPTION	DATE	BY

SQUAD BOSS	
DRAWN BY	
TRACED BY	
CHECKED BY	

SHEET 5 OF 5 SHEETS