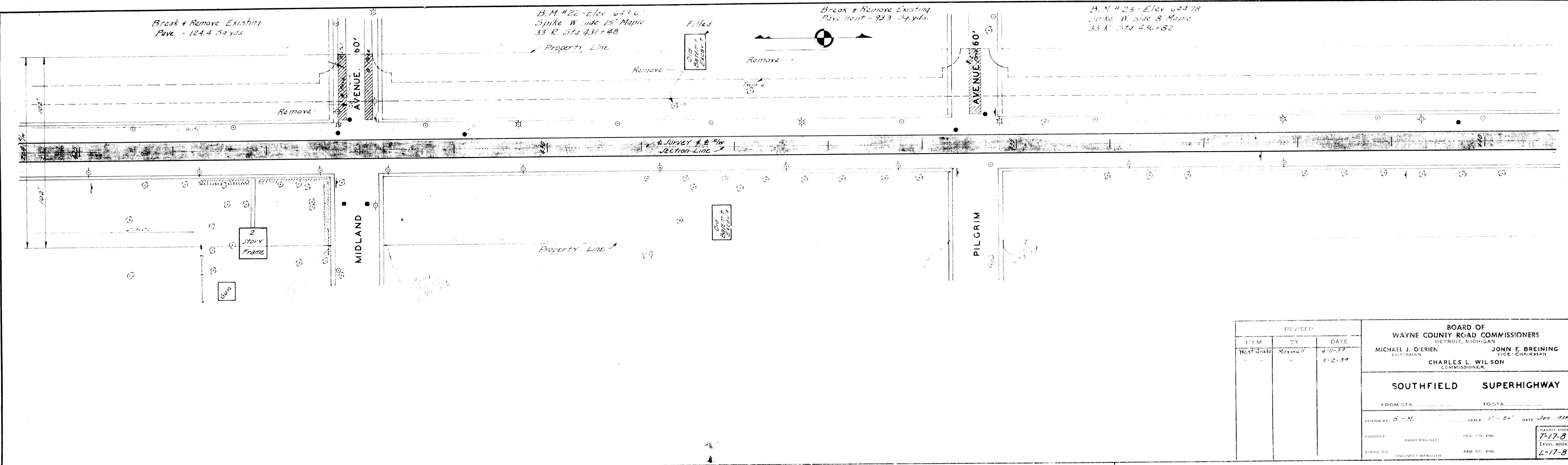


| REVISED                           |    |      | BOARD OF WAYNE COUNTY ROAD COMMISSIONERS<br>DETROIT, MICHIGAN |                                   |
|-----------------------------------|----|------|---|-----------------------------------|
| ITEM                              | BY | DATE | MICHAEL J. O'BRIEN<br>CHAIRMAN                                | JOHN F. BREINING<br>VICE-CHAIRMAN |
|                                   |    |      | CHARLES L. WILSON<br>COMMISSIONER                             |                                   |
| <b>SOUTHFIELD ROAD</b>            |    |      |   |                                   |
| DRAWN BY: <i>Glaser - Maxwell</i> |    |      | SCALE: 1"=50'   | DATE: 1/27-1928                   |
| CORRECTY: _____                   |    |      | ROAD ENGINEER   | NO. ENGINEER                      |
| APPROVED: _____                   |    |      | COUNTY HIGHWAY ENGINEER                                       | NO. ENGINEER                      |

|                      |                   |    |      |
|----------------------|-------------------|----|------|
| PLAN                 | SURVEYED          | BY | DATE |
|                      | PLOTTED           | BY | DATE |
| NOTE BOOK NO. 7-17-8 | ALIGNMENT CHECKED |    |      |
|                      | BY                |    |      |

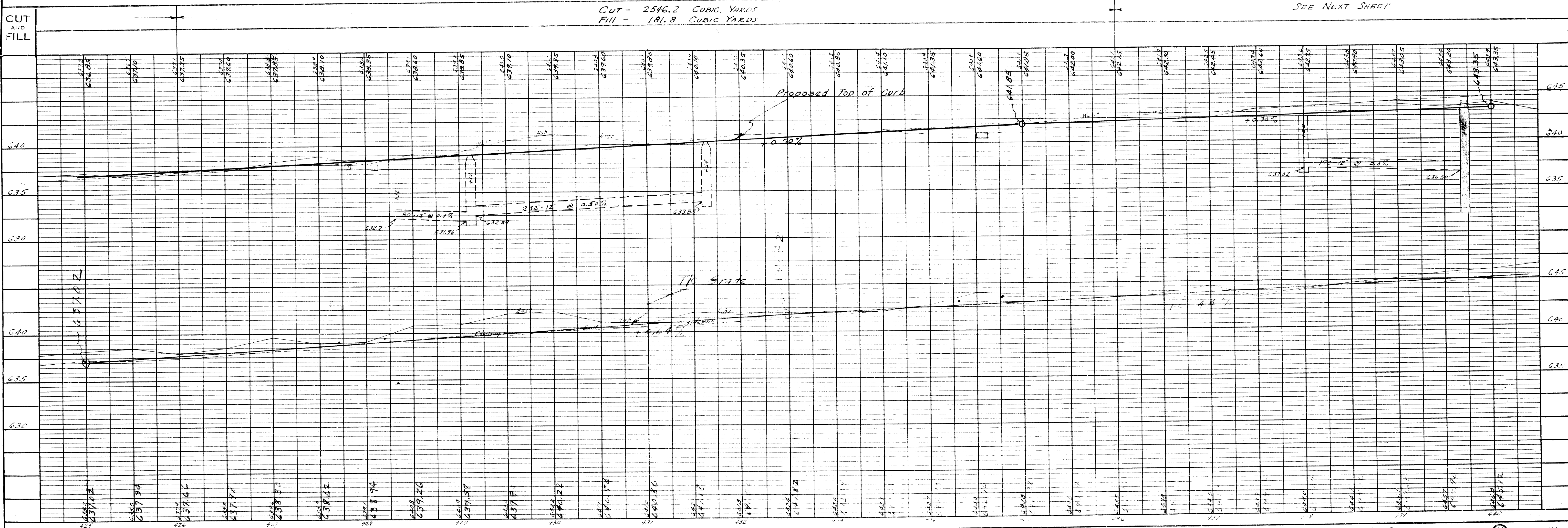
|               |                    |    |      |
|---------------|--------------------|----|------|
| PROFILE       | SURVEYED           | BY | DATE |
|               | PLOTTED            | BY | DATE |
| NOTE BOOK NO. | GRADE CHECKED      |    |      |
|               | STRUCTURE NOTATION |    |      |



| REVISED |         |         |
|---------|---------|---------|
| BY      | DATE    |         |
| West    | Maxwell | 4-10-39 |
|         |         | 5-2-39  |

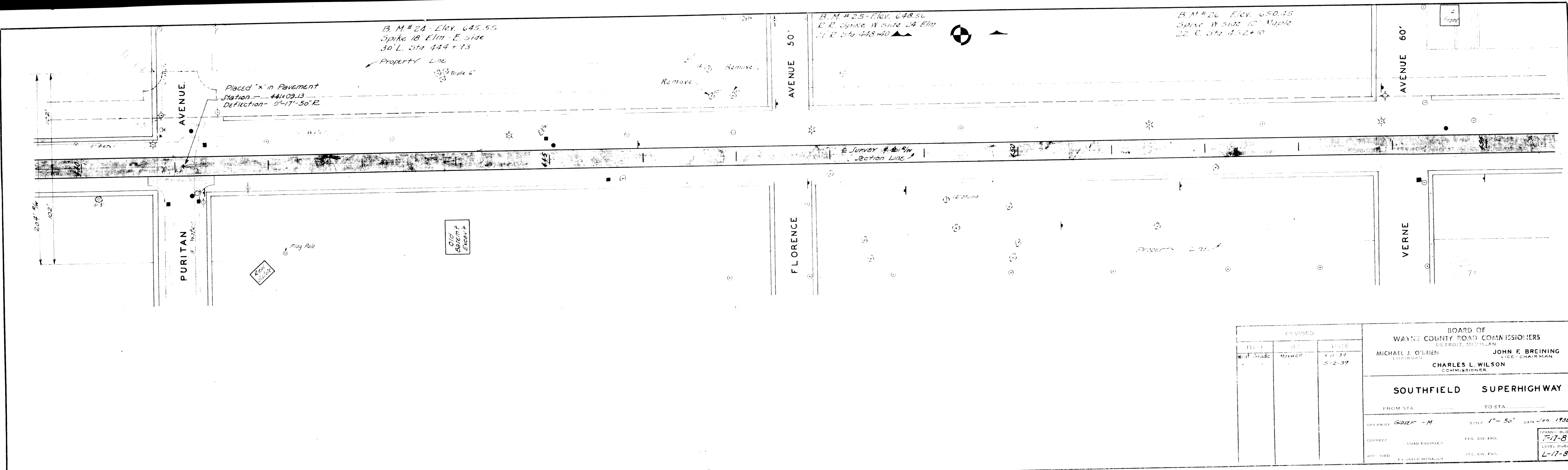
**BOARD OF WAYNE COUNTY ROAD COMMISSIONERS**  
 DETROIT, MICHIGAN  
 MICHAEL J. O'RIEN, CHAIRMAN  
 JOHN E. BREINING, VICE-CHAIRMAN  
 CHARLES L. WILSON, COMMISSIONER

**SOUTHFIELD SUPERHIGHWAY**  
 FROM STA. \_\_\_\_\_ TO STA. \_\_\_\_\_  
 DRAWN BY S. M. \_\_\_\_\_ SCALE 1" = 50' DATE Jan. 1939  
 CORRECTED BY \_\_\_\_\_ REG. CIV. ENG. \_\_\_\_\_  
 APPROVED BY \_\_\_\_\_ REG. EX. ENG. \_\_\_\_\_



PLAN  
 SURVEYED, PLOTTED, ALIGNED CHECKED, RT. OF WAY CHECKED, NO. 7-17-39  
 BY: J. B. ZELTZER  
 DATE: 1-23-39

PROFILE  
 SURVEYED, PLOTTED, GRADES CHECKED, STRUCTURE NOTATIONS CHECKED, NO. 7-17-39  
 BY: J. B. ZELTZER  
 DATE: 1-23-39



|         |    |        |   |
|---------|----|--------|---|
| REVISED |    |        | BOARD OF WAYNE COUNTY ROAD COMMISSIONERS<br>DETROIT, MICHIGAN<br>MICHAEL J. O'BRIEN, CHAIRMAN<br>JOHN F. BREINING, VICE-CHAIRMAN<br>CHARLES L. WILSON, COMMISSIONER<br><br><b>SOUTHFIELD SUPERHIGHWAY</b><br>FROM STA. _____ TO STA. _____<br>DRAWN BY: GIBBY - M SCALE: 1" = 50' DATE: Jan 1939<br>CORRECT: ROAD ENGINEER REG. CIV. ENG. 7-17-8<br>APP. BY: ENGINEER MANAGER REG. CIV. ENG. L-17-8 |
| FILED   | BY | DATE   |   |
|         |    | 5-2-39 |   |

