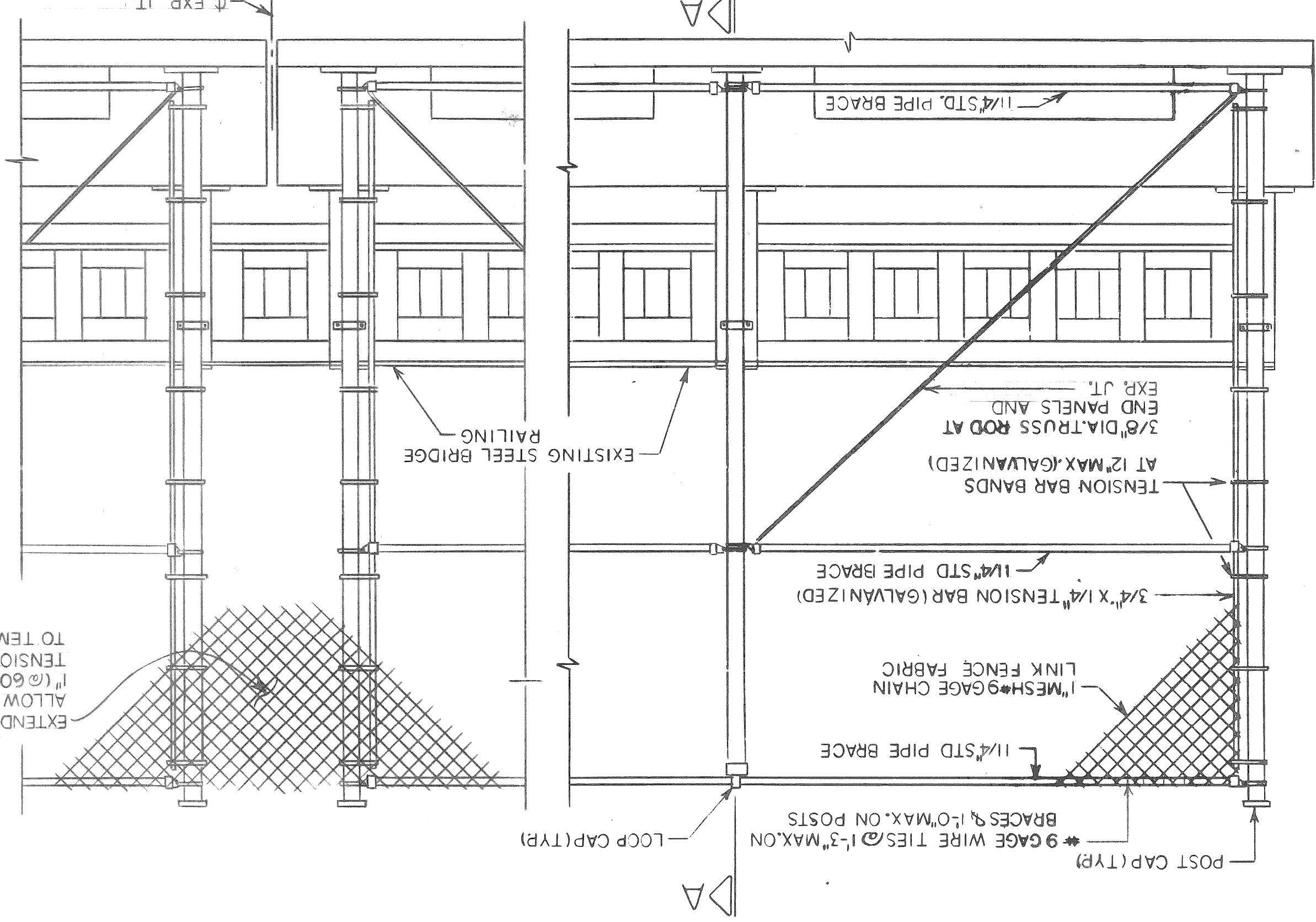
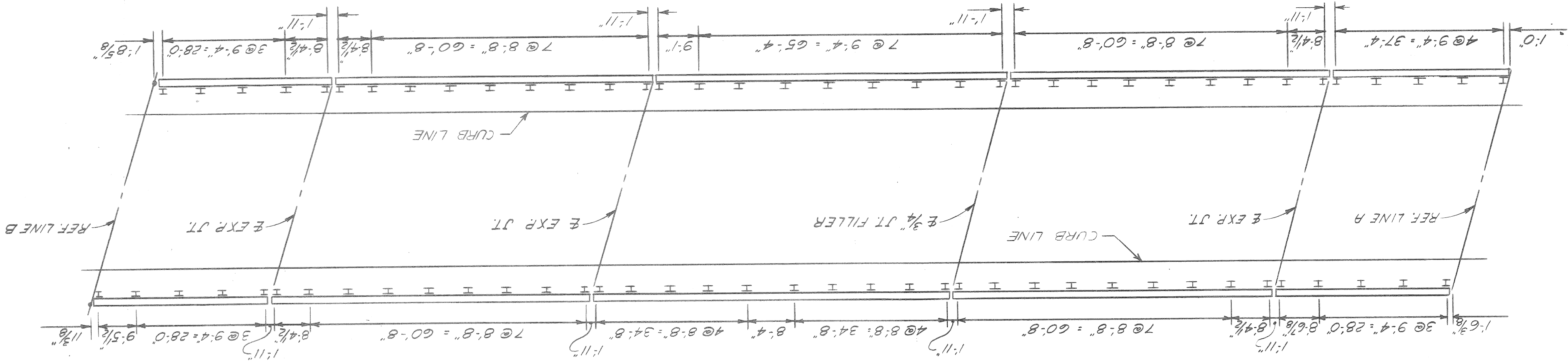


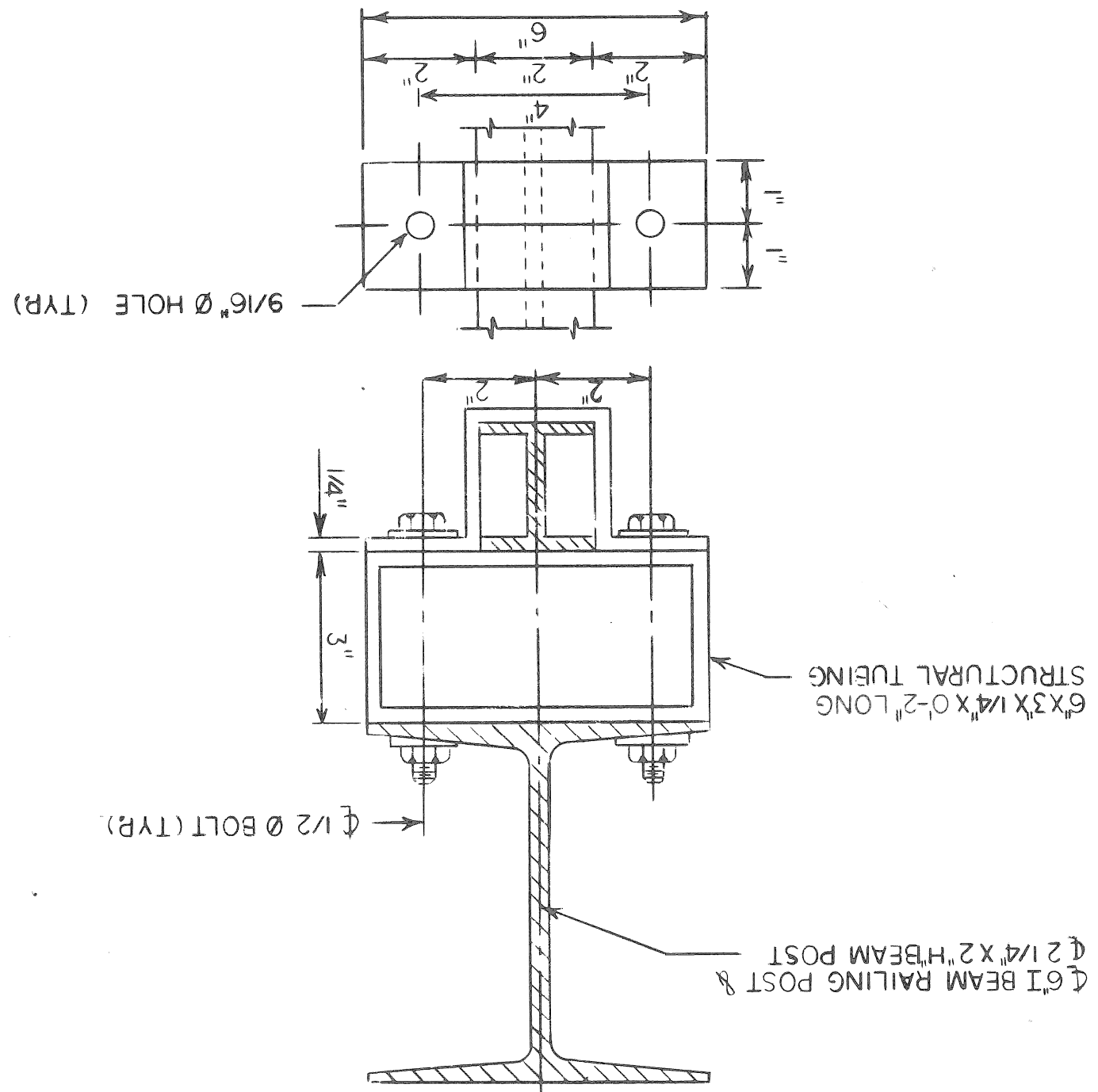
TYPICAL ELEVATION



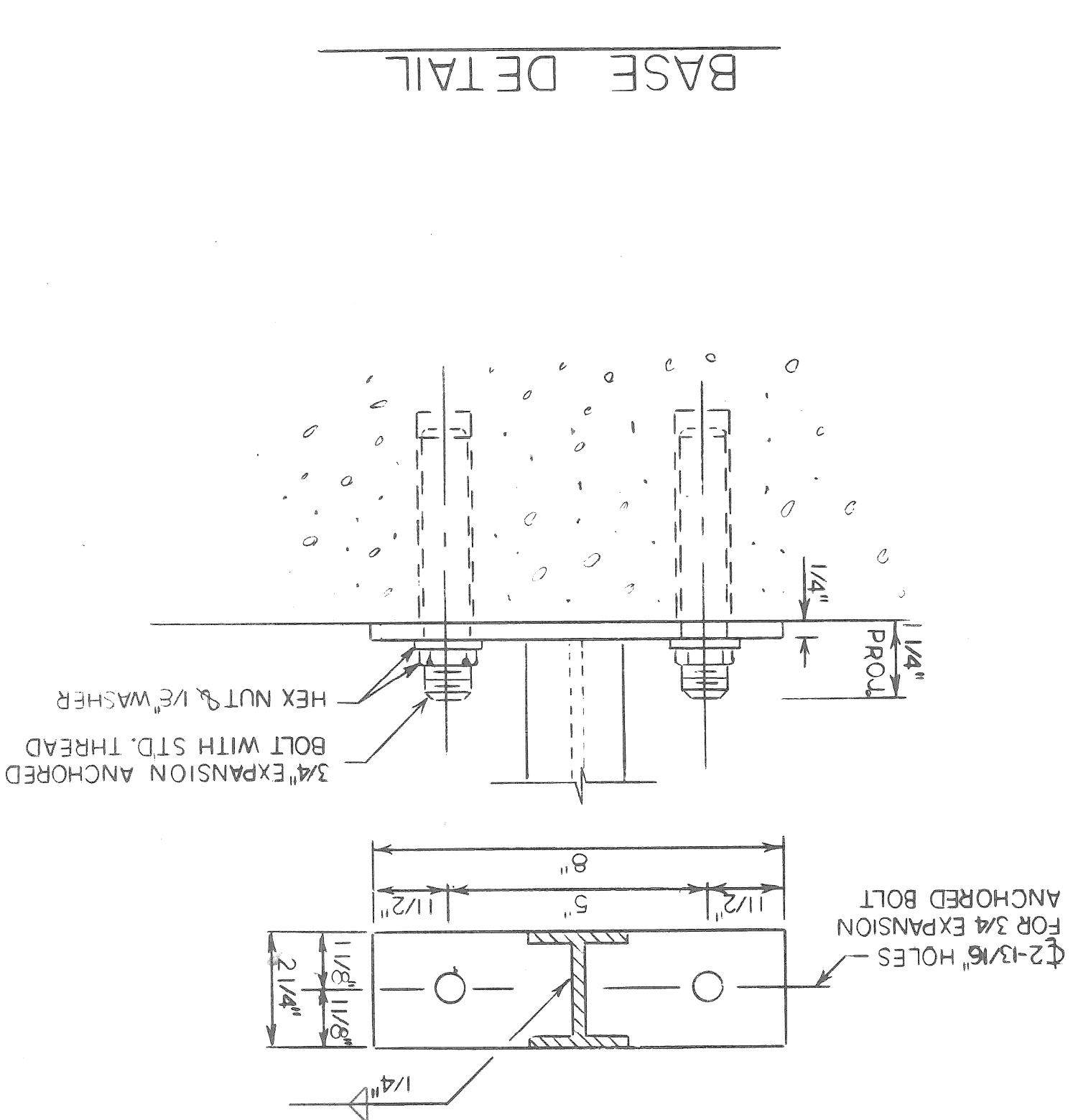
PLAN



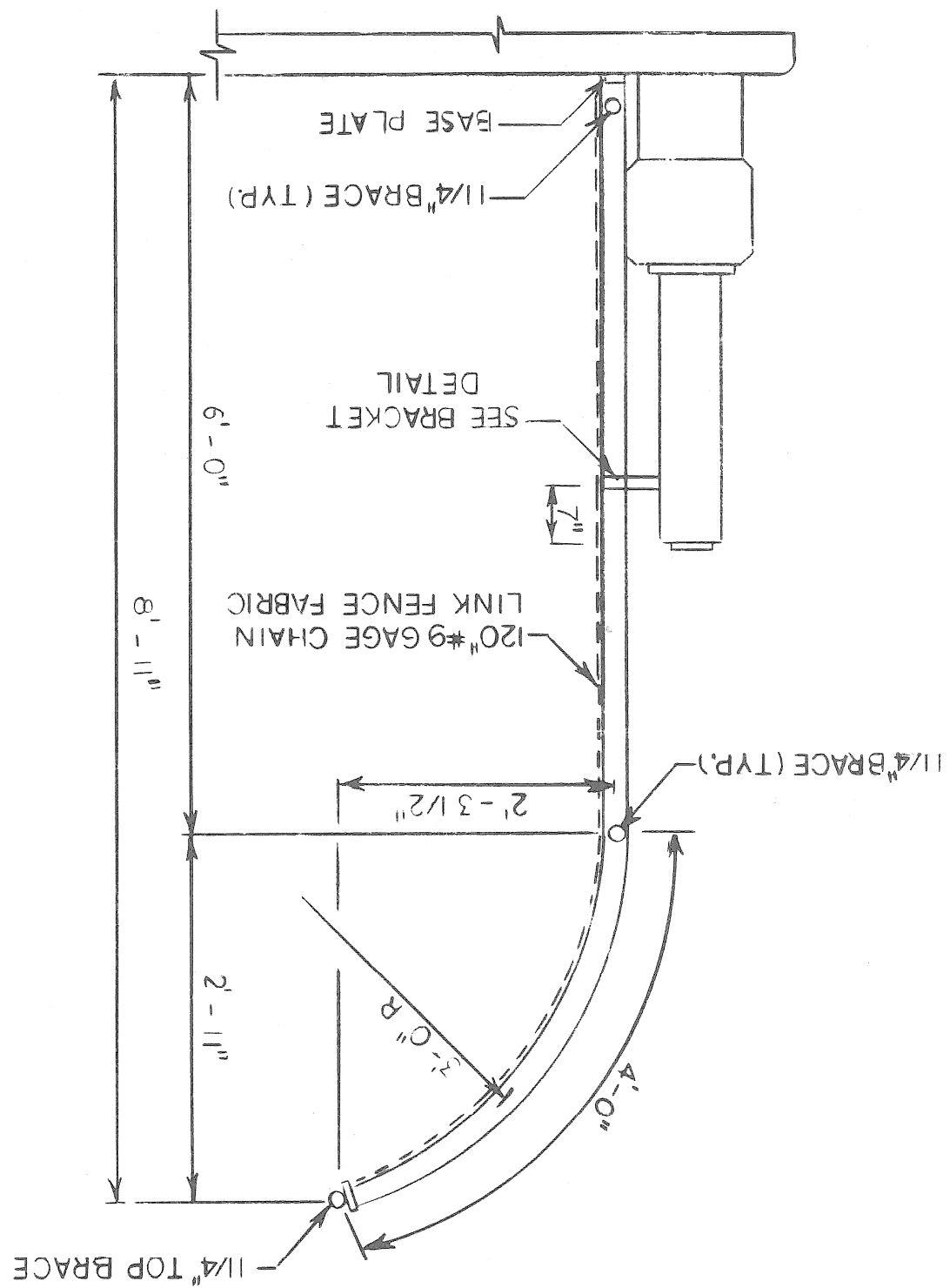
BRACKET DETAIL



BASE DETAIL



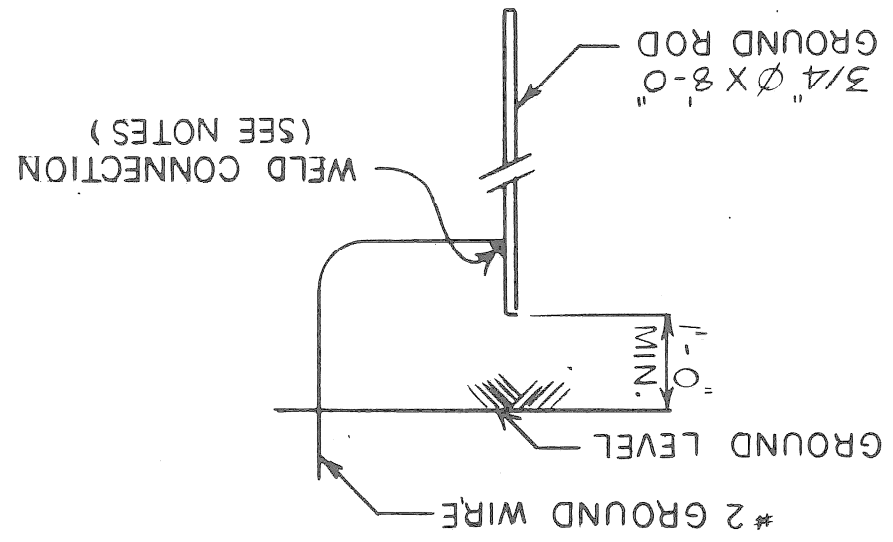
SECTION A-A



EXTEND FABRIC ACROSS EXPANSION JOINTS TO TENSION BARS; ADJUSTMENTS MAY BE MADE DUE TO TEMPERATURE AT THE DIRECTION OF THE ENGINEER. ALLOW 2\"/>

MISCELLANEOUS QUANTITIES	
ITEM	UNIT AMOUNT
PEDESTRIAN FENCING - STRUCTURES	S.F.T. 5915
ELECTRICAL GROUNDING SYSTEM	EACH 1

MAINTAIN ONE FOOT MINIMUM COVER OVER GROUND WIRE AND GROUND ROD. ALL UNDERGROUND CONNECTIONS SHALL BE MADE BY COLDWELD, THERMITE, GAS OR ARC WELD. EXPOSED CONNECTIONS MAY BE SPLIT BOLT OR CLAMP TYPE. GROUND WIRE SHALL BE BARE #2 AWG AND SHALL CONFORM TO THE LATEST REVISION OF THE APPLICABLE CURRENT ASTM SPECIFICATION ASTM B 33 FOR TINNED SOFT OR ANNEALED COPPER WIRE FOR ELECTRICAL PURPOSES. GROUND ROD SHALL BE STEEL, COPPER CLAD ROD 3/4\"/>



GROUNDING NOTES AND DETAIL

EXPANSION ANCHORED BOLTS OF THE SIZE INDICATED SHALL BE BETHLEHEM MINE ROOF EXPANSION TYPE WITH K-1 SHELL, PHILLIPS RED HEAD SELF DRILLING CONCRETE ANCHORS. CHICAGO EXPANSION BOLT CO. SPECIAL SELF DRILLING ANCHOR OR APPROVED EQUAL. ALL WORK SHALL CONFORM TO THE M.D.O.T. SPECIFICATIONS FOR HIGHWAY CONSTRUCTION - 1964 EDITION EXCEPT AS SHOWN OR NOTED ON THE PLAN. THE POSTS SHALL BE 2\"/>

FENCING NOTES

date 10-1-87
 sheet 2 of 3
 contract no. a.o. 87-22-21
 SOI OF 82251
 IN DETROIT (1-375)
 EXPRESSWAY
 W.P. CHRYSLER
 CROSSING
 GRATIOT AVE
 BRIDGE
 PROTECTIVE
 SCREENING
 DETAILS
 CITY OF DETROIT
 city engineering department
 for MICHIGAN DEPARTMENT OF TRANSPORTATION
 approved by H. DICKOW
 checked by H. DICKOW
 drawn by H. DICKOW
 designed by H. DICKOW
 STRUCTURAL ENGINEER
 revisions table with columns for date, description, and initials.

