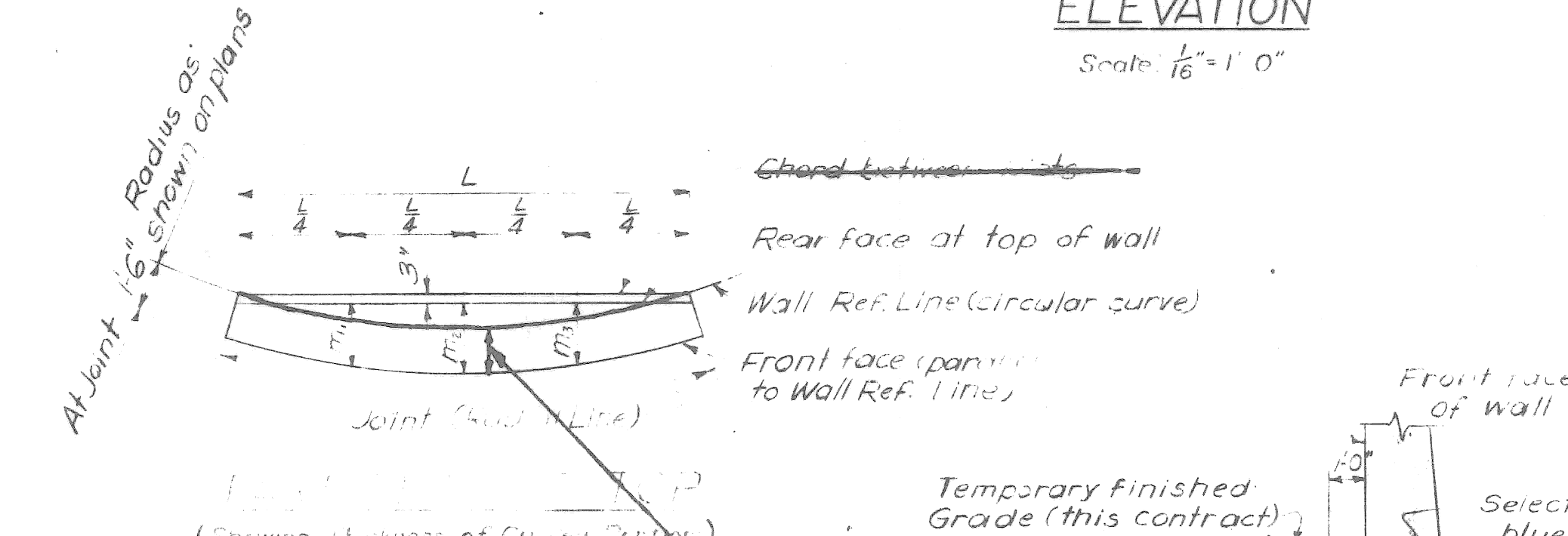
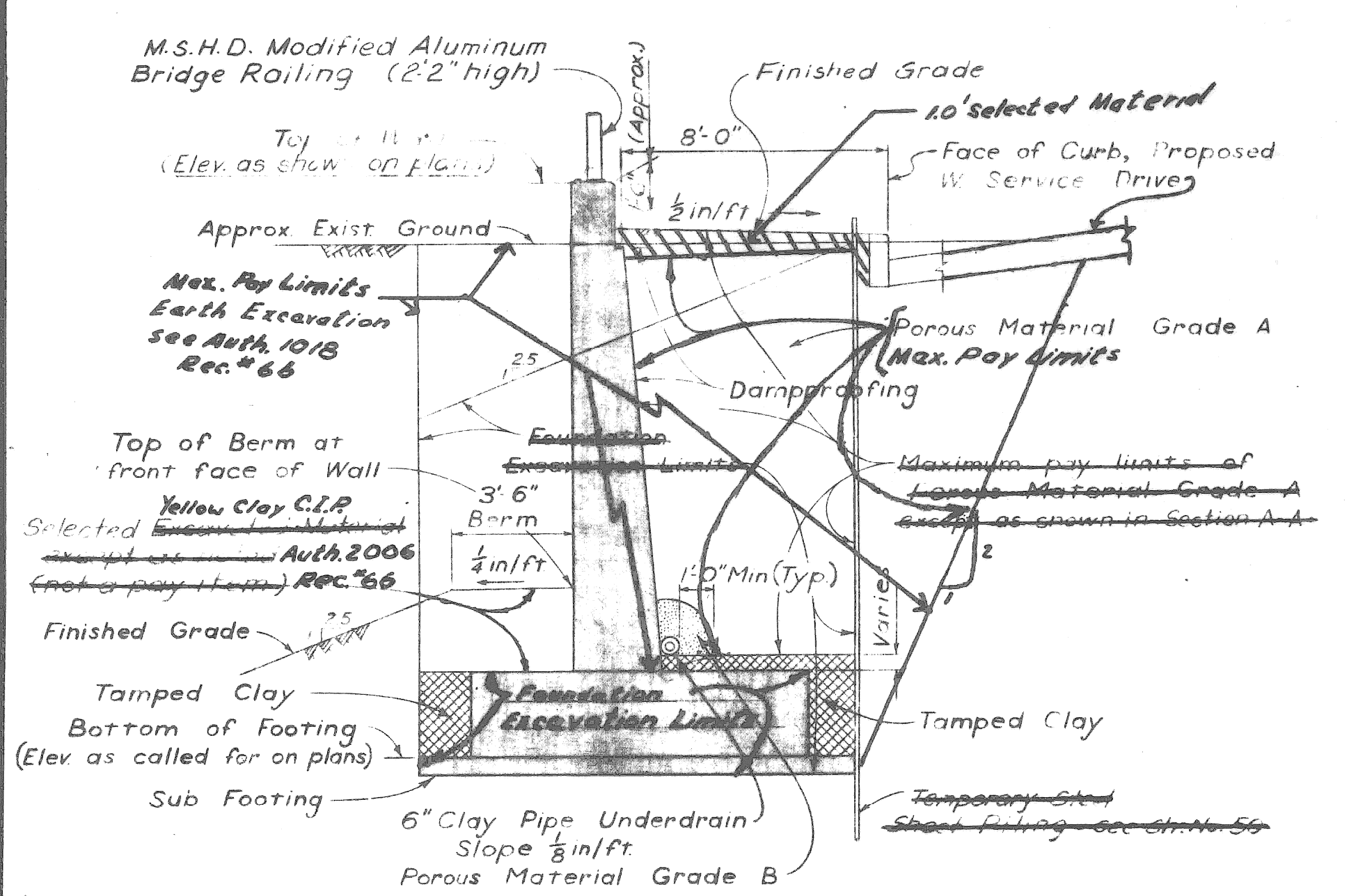
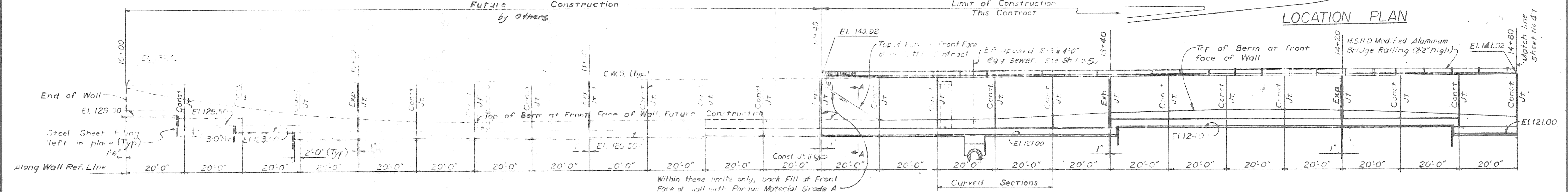


PLAN  
Scale: 1/16" = 1'-0"

LOCATION PLAN



**MISCELLANEOUS QUANTITIES**

Item	As Constructed
6" Sewer, 6' deep, 1/2 in. 1/2	75 Lin. Ft. 67 Lin. Ft.
Special Manhole Frame and Cover	3 Each 3 Each
Unclassified Excavation	59 Cu. Yds. 1134 Auth. 1018
1" Joint Filler	425 Sq. Ft. 425 Ft. <sup>2</sup>
Joint Waterproofing	670 Sq. Ft. 790 " Rec. 67
Damp-proofing	1042 Sq. Ft. 9185 " Rec. 67
Copper	193 Lbs. 193 Lbs.
6" Perforated Clay Pipe Underdrain	580 Lin. Ft. 589 Lin. Ft. Rec. 67
6" Cast Iron Pipe	20 Lin. Ft. 20 "
Porous Material Grade A (Comp. in Place)	3254 Cu. Yds. 5233 Cu. Yds. Auth. 1018 Rec. 67
Porous Material Grade B (Comp. in Place)	33 Cu. Yds. 33 Cu. Yds.
Ladder Rungs	45 Each 45 Ea.

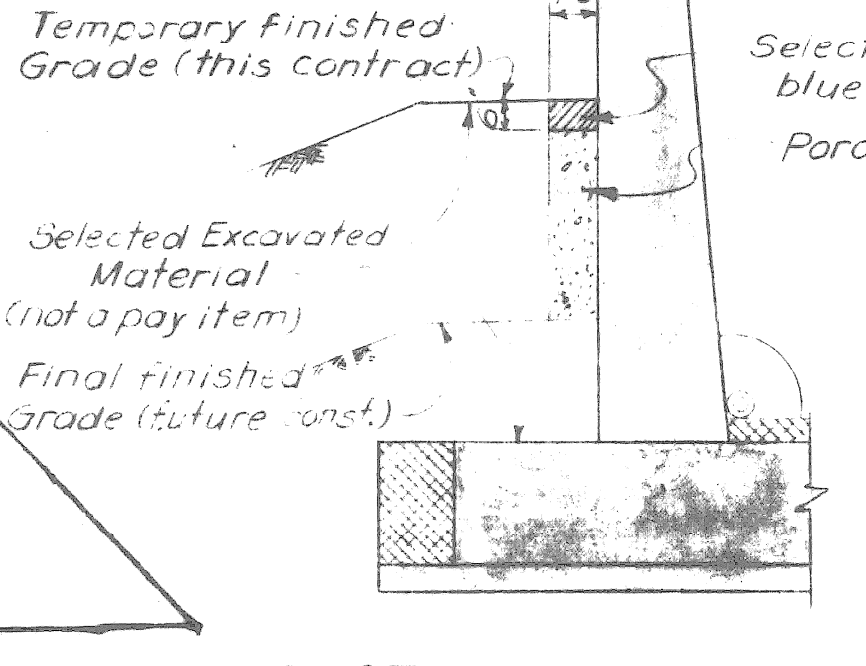
FOR INFORMATION ONLY  
NOT FOR CONSTRUCTION

**TABLE OF WALL THICKNESSES**

Wall Section	L	Thickness at Top of Wall
10 + 20	10 + 40	20'-0" 1'-5 1/2" 1'-6" 1'-5 1/2"
10 + 40	11 + 00	3 @ 20'-0" 1'-5 1/2" 1'-6" 1'-5 1/2"
11 + 00	11 + 20	20'-0" 1'-4 1/2" 1'-5" 1'-4 1/2"
12 + 60	12 + 80	20'-0" 1'-4 1/2" 1'-5" 1'-4 1/2"
12 + 80	13 + 00	20'-0" 1'-4 1/2" 1'-5" 1'-4 1/2"
13 + 00	13 + 20	20'-0" 1'-4 1/2" 1'-5" 1'-4 1/2"
15 + 20	17 + 40	11 @ 20'-0" 1'-5" 1'-5 1/2" 1'-5"
17 + 40	17 + 60	20'-0" 1'-4 1/2" 1'-4 1/2" 1'-3 1/2"

Constant Thickness = 1'-3"

See Auth. 1028



Work this Sheet with Sheet No. 68

PLANS  
CITY OF  
DEPARTMENT  
CITY ENGINEER

APPROVED: [Signature] PW 897 B(2)

**MICHIGAN STATE HIGHWAY DEPARTMENT**

CHRYSLER-FISHER INTERCHANGE  
RETAINING WALL NEAR THE FREDERICK DOUGLASS APARTMENTS  
ON THE WALTER P. CHRYSLER EXPRESSWAY IN DETROIT

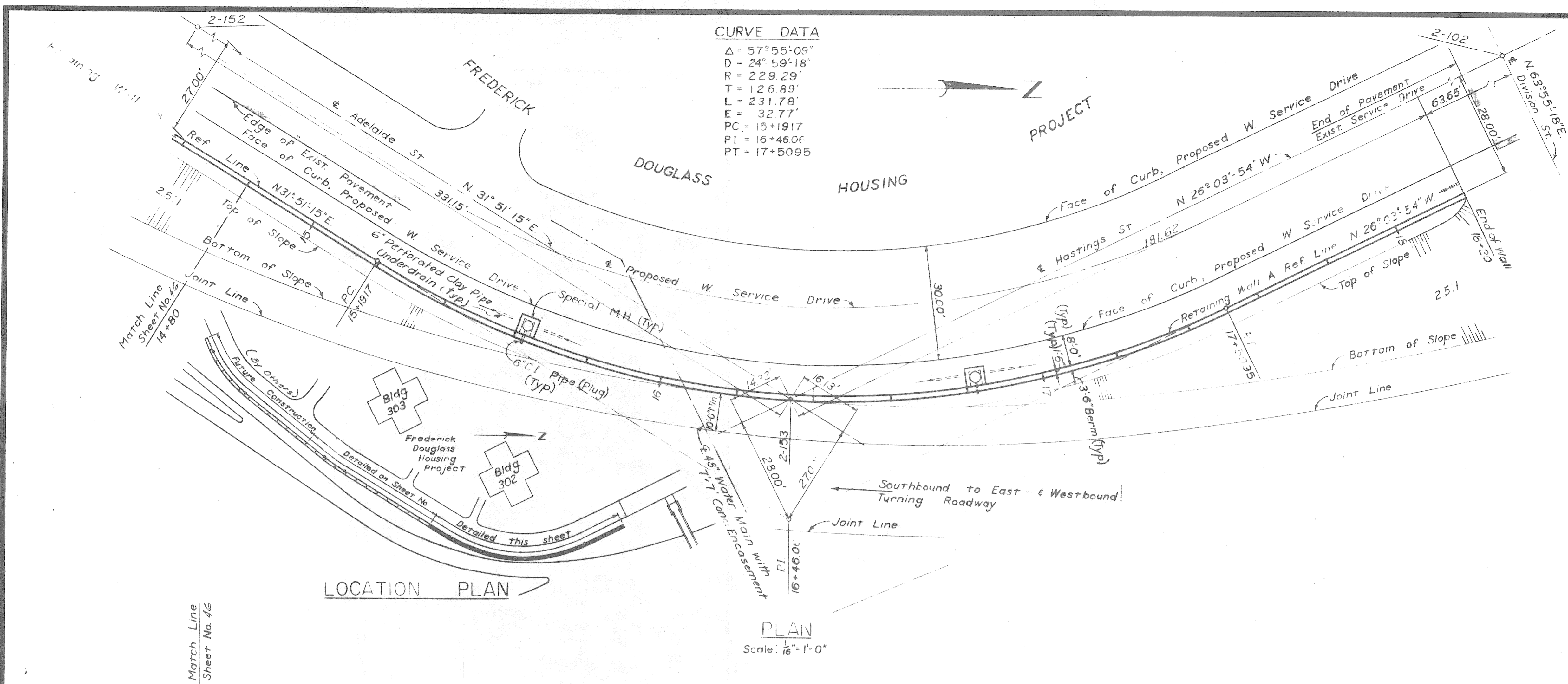
**RETAINING WALL GENERAL PLAN**

CITY OF DETROIT

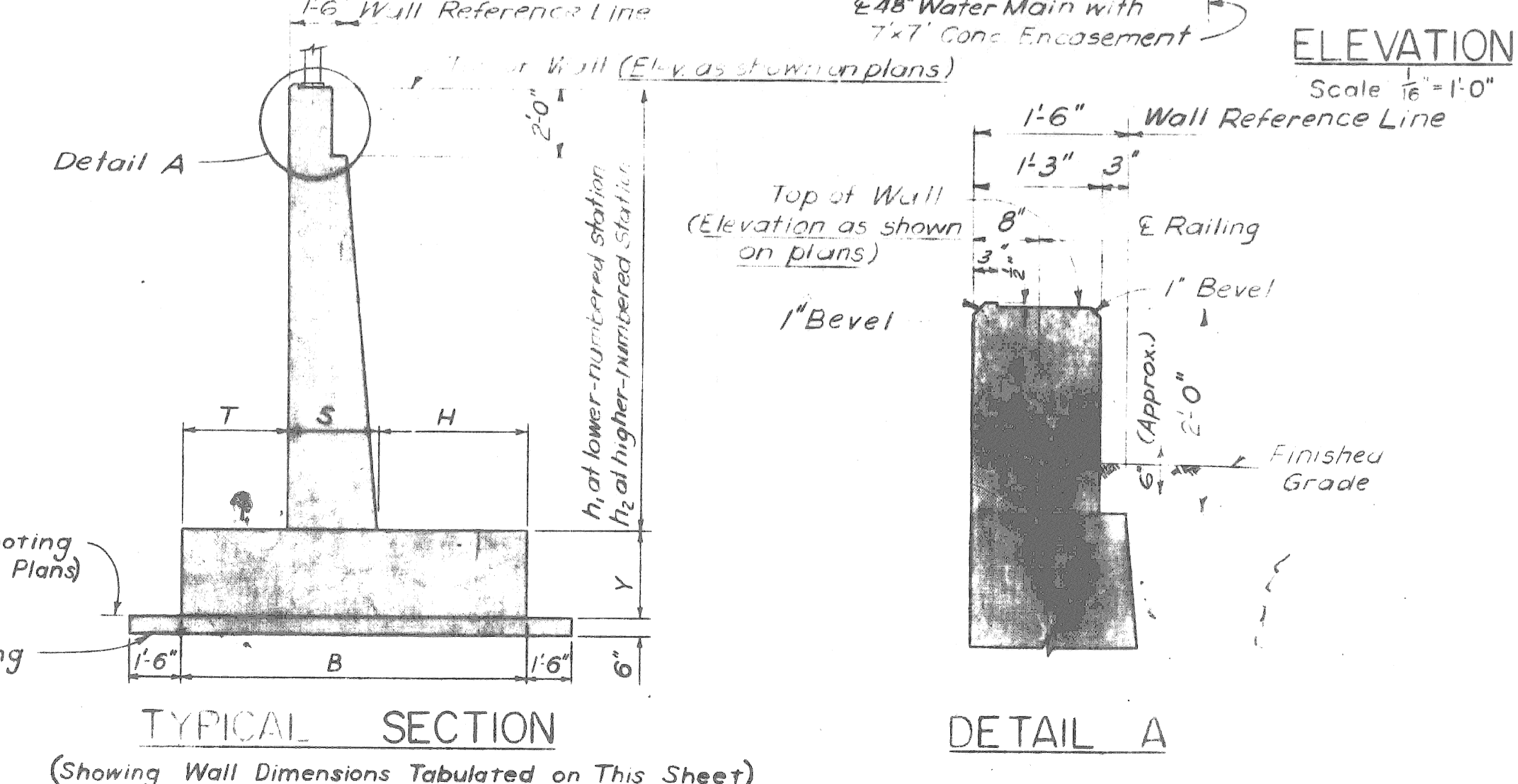
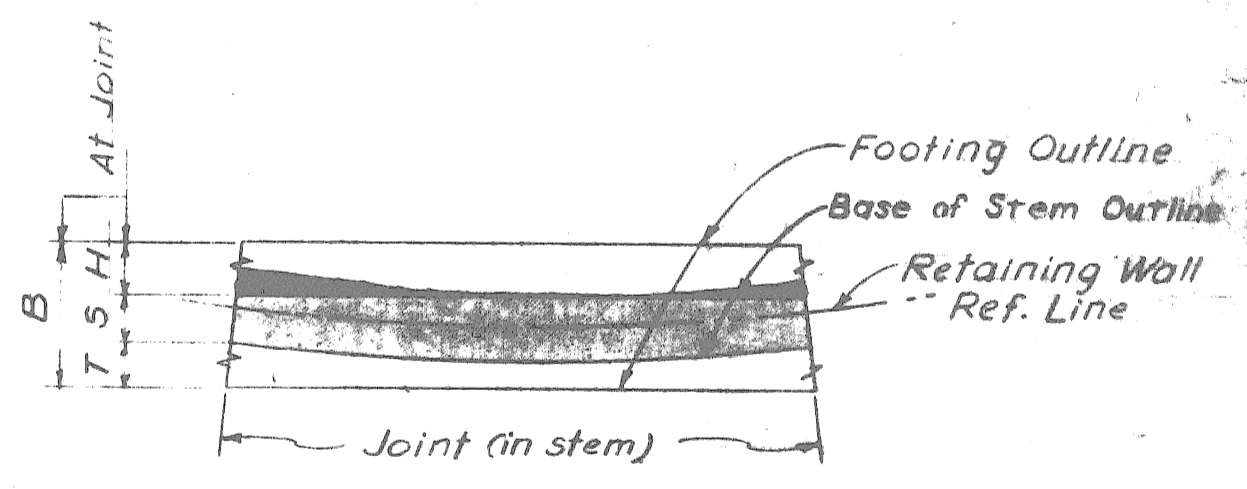
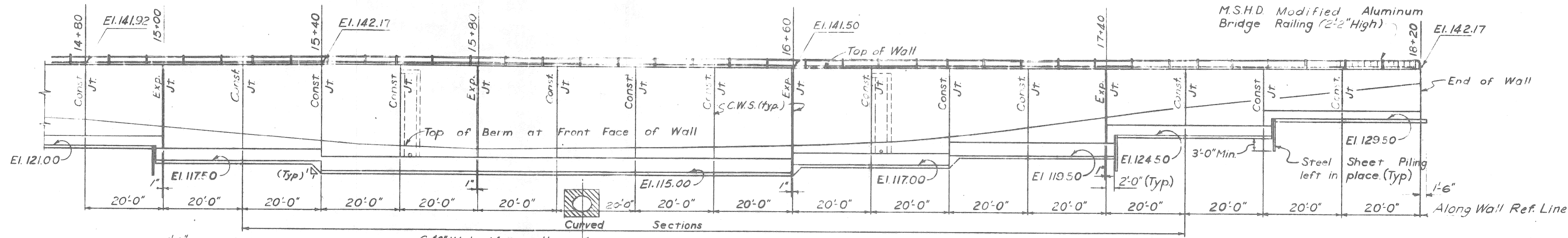
DESIGNED BY: C. J. [Signature] 9-53  
 DRAWN BY: L. B. [Signature] 8-59  
 CHECKED BY: S. [Signature] 8-59  
 SHEET 46 OF

APPROVED: [Signature] COORDINATING ENGINEER  
 APPROVED: [Signature] ENGINEER OF DESIGN-CONSULTANTS

**82251A C-3**



Station to Station	Length	h <sub>1</sub>	h <sub>2</sub>	B	Y	T	S	H	Sheet No.	
10 + 00	10 + 20	20'-0"	8'-11"	9'-0"	5'-6"	2'-0"	0'-9"	2'-1"	2'-8"	
10 + 20	10 + 40	20'-0"	12'-0"	12'-1"	7'-3"	2'-6"	1'-1"	2'-4"	3'-10"	
10 + 40	10 + 60	20'-0"	14'-7"	14'-8"	9'-9"	2'-6"	1'-6"	2'-3"	5'-7"	
10 + 60	10 + 80	20'-0"	17'-2"	17'-3"	11'-9"	2'-6"	1'-10"	2'-10"	7'-1"	
10 + 80	11 + 00	20'-0"	17'-9"	17'-4"	11'-9"	2'-6"	1'-10"	2'-10"	7'-1"	
11 + 00	11 + 20	20'-0"	17'-4"	17'-5"	11'-9"	2'-6"	1'-10"	2'-10"	7'-1"	
11 + 20	11 + 40	20'-0"	17'-5"	17'-6"	11'-9"	2'-6"	1'-10"	2'-10"	7'-1"	
11 + 40	11 + 60	20'-0"	17'-6"	17'-7"	11'-9"	2'-6"	1'-10"	2'-10"	7'-1"	
11 + 60	11 + 80	20'-0"	17'-7"	17'-8"	11'-9"	2'-6"	1'-10"	2'-10"	7'-1"	
11 + 80	12 + 00	20'-0"	17'-8"	17'-9"	11'-9"	2'-6"	1'-10"	2'-10"	7'-1"	
12 + 00	12 + 20	20'-0"	17'-9"	17'-4"	11'-9"	2'-6"	1'-10"	2'-10"	7'-1"	
12 + 20	12 + 40	20'-0"	17'-4"	17'-5"	11'-9"	2'-6"	1'-10"	2'-10"	7'-1"	
12 + 40	12 + 60	20'-0"	17'-5"	17'-6"	11'-9"	2'-6"	1'-10"	2'-10"	7'-1"	
12 + 60	12 + 80	20'-0"	17'-6"	17'-7"	11'-9"	2'-6"	1'-10"	2'-10"	7'-1"	51
12 + 80	13 + 00	20'-0"	17'-7"	17'-8"	11'-9"	2'-6"	1'-10"	2'-10"	7'-1"	
13 + 00	13 + 20	20'-0"	17'-8"	17'-9"	11'-9"	2'-6"	1'-10"	2'-10"	7'-1"	52
13 + 20	13 + 40	20'-0"	17'-9"	17'-4"	11'-9"	2'-6"	1'-10"	2'-10"	7'-1"	
13 + 40	13 + 60	20'-0"	14'-10"	14'-11"	9'-9"	2'-6"	1'-6"	2'-8"	5'-7"	
13 + 60	13 + 80	20'-0"	14'-11"	15'-0"	9'-9"	2'-6"	1'-6"	2'-8"	5'-7"	53
13 + 80	14 + 00	20'-0"	15'-0"	15'-1"	9'-9"	2'-6"	1'-6"	2'-8"	5'-7"	
14 + 00	14 + 20	20'-0"	15'-1"	15'-2"	9'-9"	2'-6"	1'-6"	2'-8"	5'-7"	
14 + 20	14 + 40	20'-0"	15'-2"	15'-3"	9'-9"	2'-6"	1'-6"	2'-8"	5'-7"	
14 + 40	14 + 60	20'-0"	15'-3"	15'-4"	9'-9"	2'-6"	1'-6"	2'-8"	5'-7"	54
14 + 60	14 + 80	20'-0"	15'-4"	15'-5"	9'-9"	2'-6"	1'-6"	2'-8"	5'-7"	
14 + 80	15 + 00	20'-0"	15'-5"	15'-6"	9'-9"	2'-6"	1'-6"	2'-8"	5'-7"	
15 + 00	15 + 20	20'-0"	15'-6"	15'-7"	9'-9"	2'-6"	1'-6"	2'-8"	5'-7"	
15 + 20	15 + 40	20'-0"	15'-7"	15'-8"	9'-9"	2'-6"	1'-6"	2'-8"	5'-7"	55
15 + 40	15 + 60	20'-0"	15'-8"	15'-9"	9'-9"	2'-6"	1'-6"	2'-8"	5'-7"	
15 + 60	15 + 80	20'-0"	15'-9"	15'-10"	9'-9"	2'-6"	1'-6"	2'-8"	5'-7"	
16 + 00	16 + 20	20'-0"	15'-10"	15'-11"	9'-9"	2'-6"	1'-6"	2'-8"	5'-7"	56
16 + 20	16 + 40	20'-0"	15'-11"	15'-12"	9'-9"	2'-6"	1'-6"	2'-8"	5'-7"	
16 + 40	16 + 60	20'-0"	15'-12"	16'-0"	9'-9"	2'-6"	1'-6"	2'-8"	5'-7"	
16 + 60	16 + 80	20'-0"	16'-0"	16'-1"	9'-9"	2'-6"	1'-6"	2'-8"	5'-7"	
16 + 80	17 + 00	20'-0"	16'-1"	16'-2"	9'-9"	2'-6"	1'-6"	2'-8"	5'-7"	57
17 + 00	17 + 20	20'-0"	16'-2"	16'-3"	9'-9"	2'-6"	1'-6"	2'-8"	5'-7"	
17 + 20	17 + 40	20'-0"	16'-3"	16'-4"	9'-9"	2'-6"	1'-6"	2'-8"	5'-7"	
17 + 40	17 + 60	20'-0"	16'-4"	16'-5"	9'-9"	2'-6"	1'-6"	2'-8"	5'-7"	58
17 + 60	17 + 80	20'-0"	16'-5"	16'-6"	9'-9"	2'-6"	1'-6"	2'-8"	5'-7"	
17 + 80	18 + 00	20'-0"	16'-6"	16'-7"	9'-9"	2'-6"	1'-6"	2'-8"	5'-7"	
18 + 00	18 + 20	20'-0"	16'-7"	16'-8"	9'-9"	2'-6"	1'-6"	2'-8"	5'-7"	



**NOTE**  
The Contractor shall take special precautions to arrange the forms for the curved face of the wall in such a manner as to present a neat geometric pattern of form marks on the wall face. The pattern of form work shall be uniform. No offsets or shifting of form patterns will be permitted without the approval of the Engineer.

**NOTES**  
C.W.S denotes copper waterstop.  
N.F. denotes near face.  
F.F. denotes far face.  
For bevel and molding details see standard sheet R10.  
Railing post anchor bolts shall be set accurately to a template and shall be set from the front face of the wall.  
The design of this structure is based on a maximum foundation pressure of 3700 p.s.f. under D.L. only and on a maximum foundation pressure of 4500 p.s.f. under D.L.+L.L.  
Maximum average foundation pressure under D.L. only is 2450 p.s.f. and under D.L.+L.L. is 2700 p.s.f.  
Maximum allowable foundation pressure with R=1.0 is 3800 p.s.f. and with R=1.5 is 5300 p.s.f.

FOR INFORMATION ONLY  
NOT FOR CONSTRUCTION.

Work this Sheet with Sheet No. 67

CONTROL SECTION 82251B

PLANS PREPARED BY  
**CITY OF DETROIT**  
DEPARTMENT OF PUBLIC WORKS  
BUREAU OF HIGHWAYS AND BRIDGES

DESIGNED BY: *R. R. Hicks*  
CHECKED BY: *[Signature]*  
JOB NO. PW897B(2)

NO.	DESCRIPTION	DATE	BY

**MICHIGAN STATE HIGHWAY DEPARTMENT**

CHRYSLER-FISHER INTERCHANGE  
RETAINING WALL NEAR THE FREDERICK DOUGLASS APARTMENTS  
ON THE WALTER P. CHRYSLER EXPRESSWAY IN DETROIT

**RETAINING WALL GENERAL PLAN**

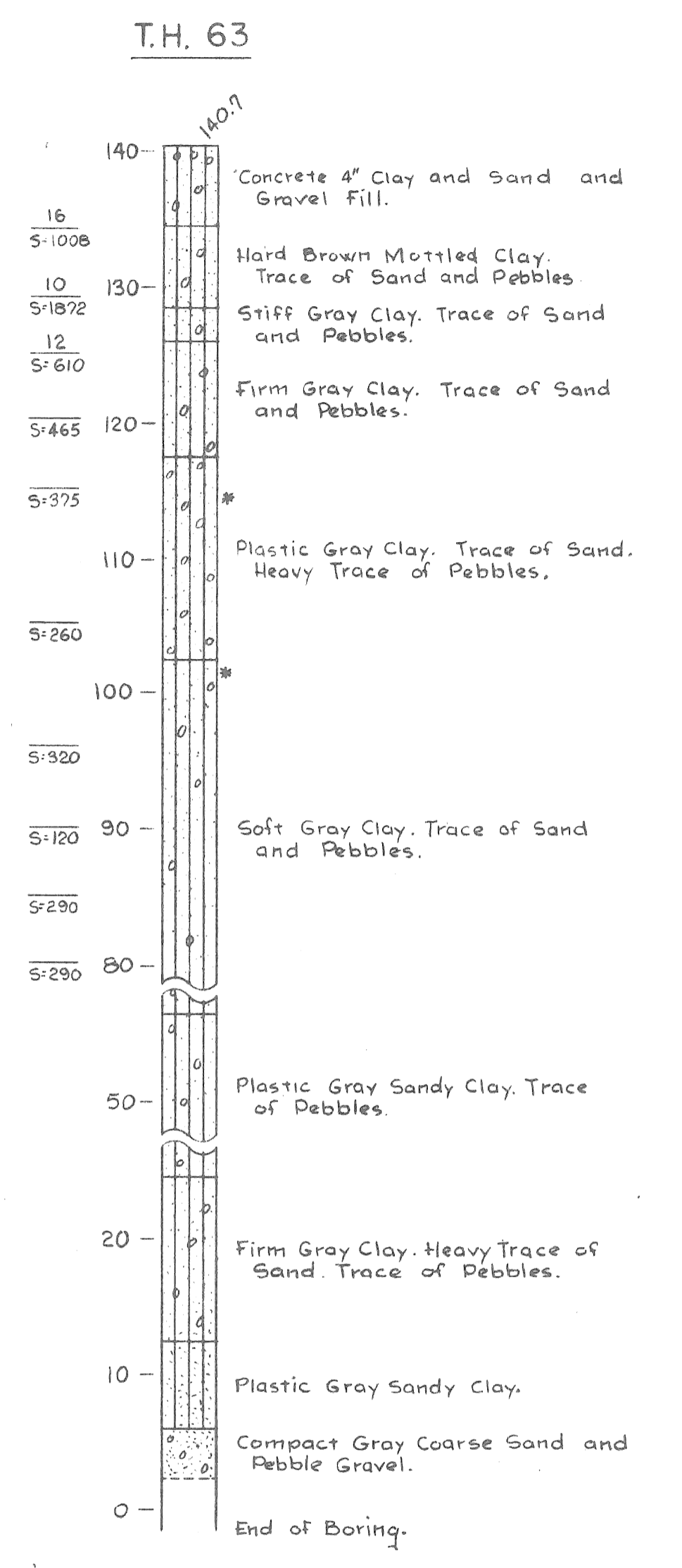
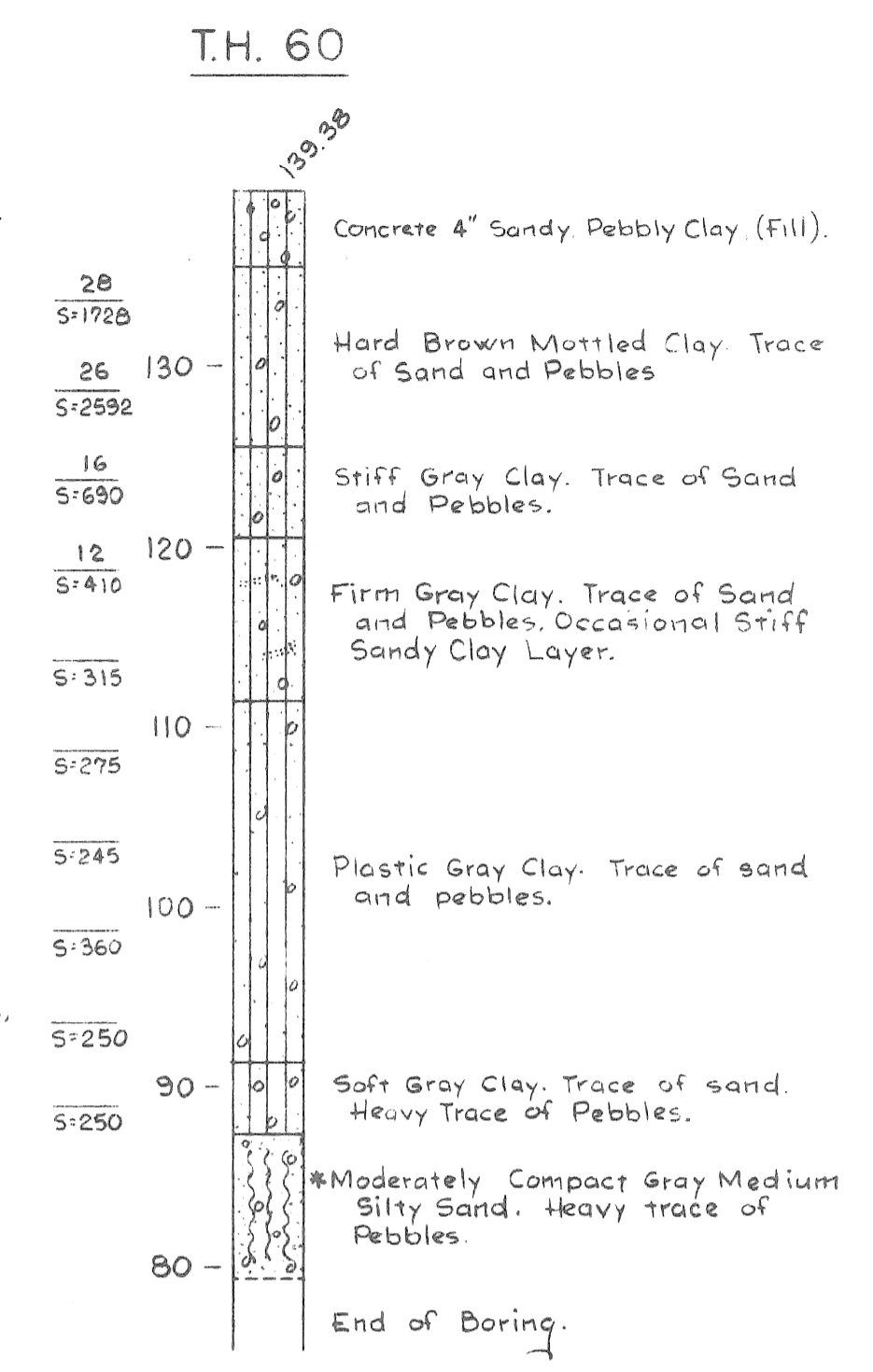
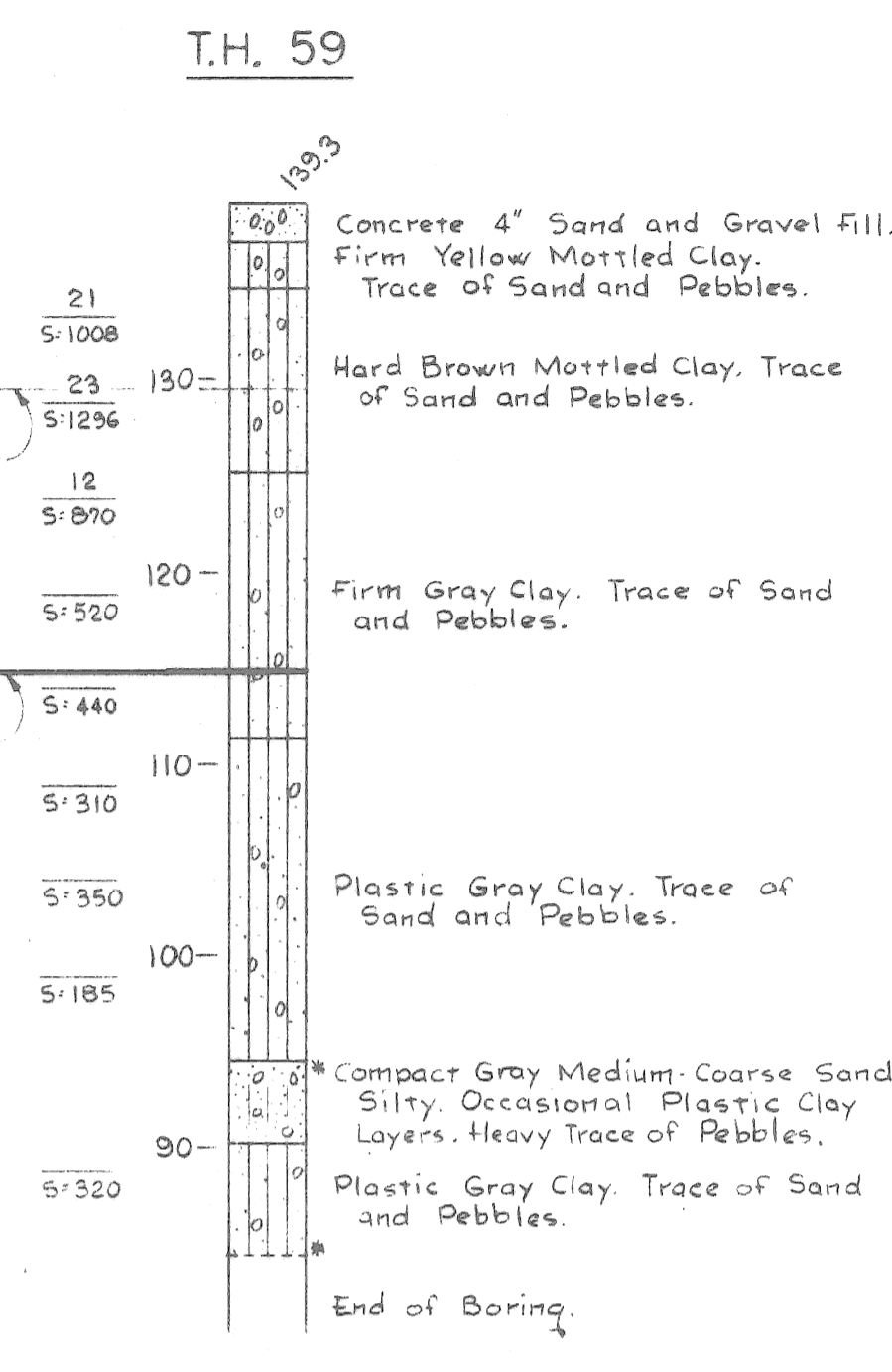
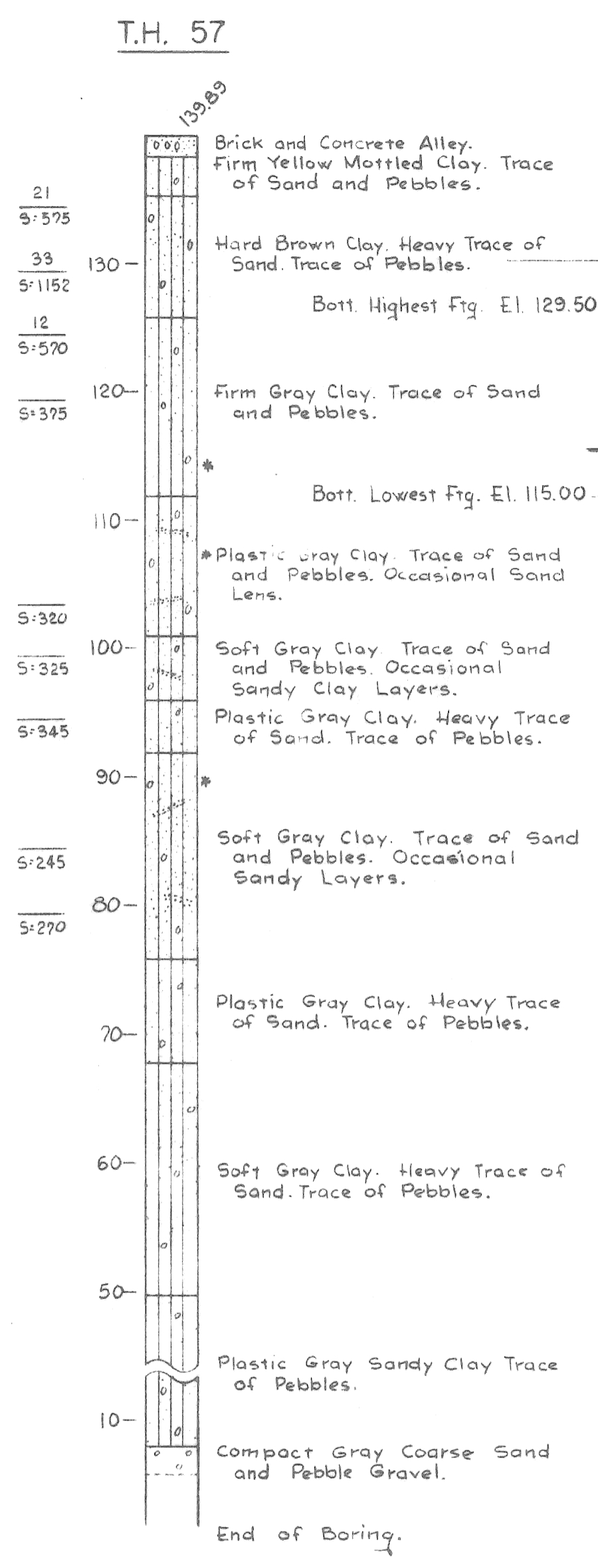
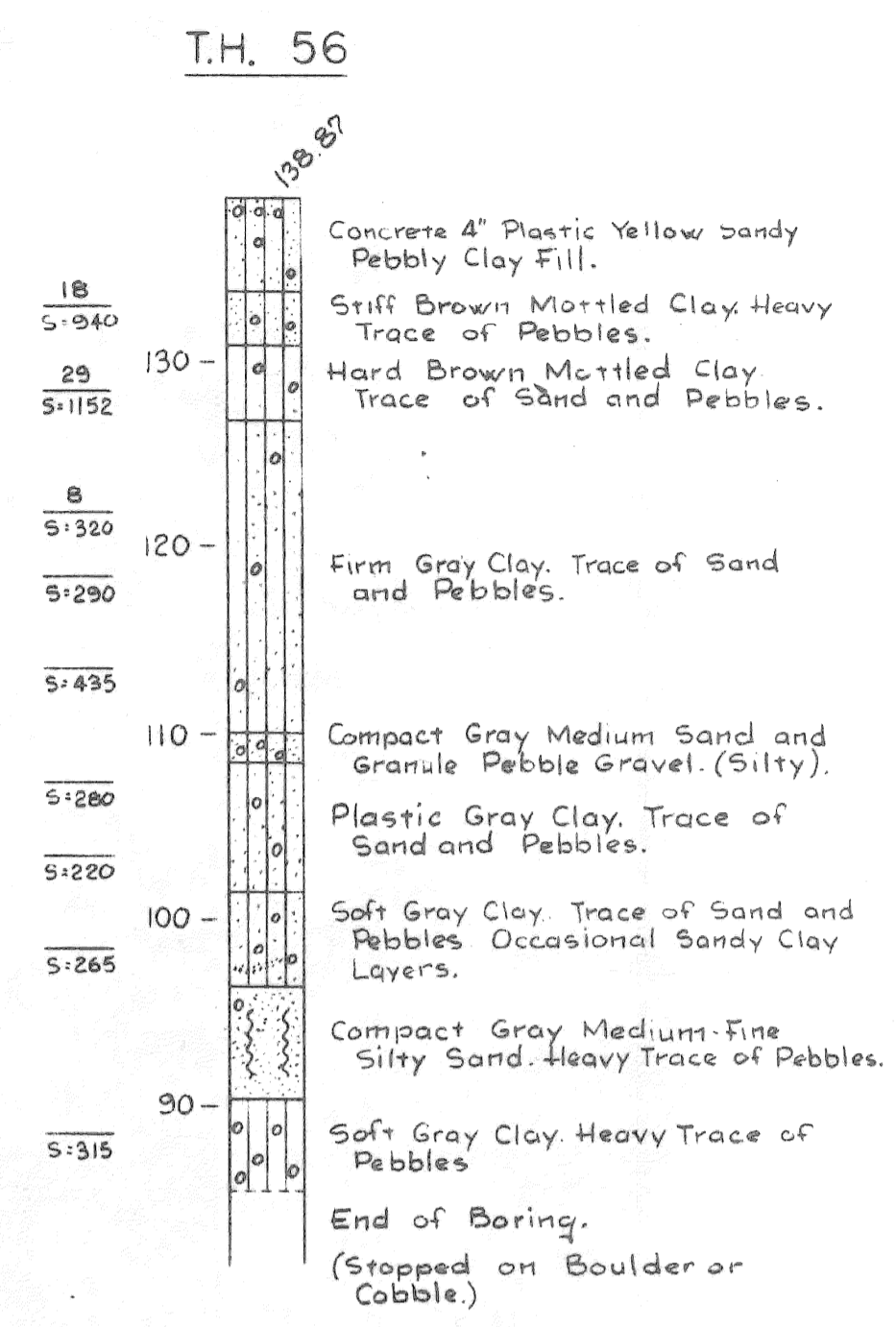
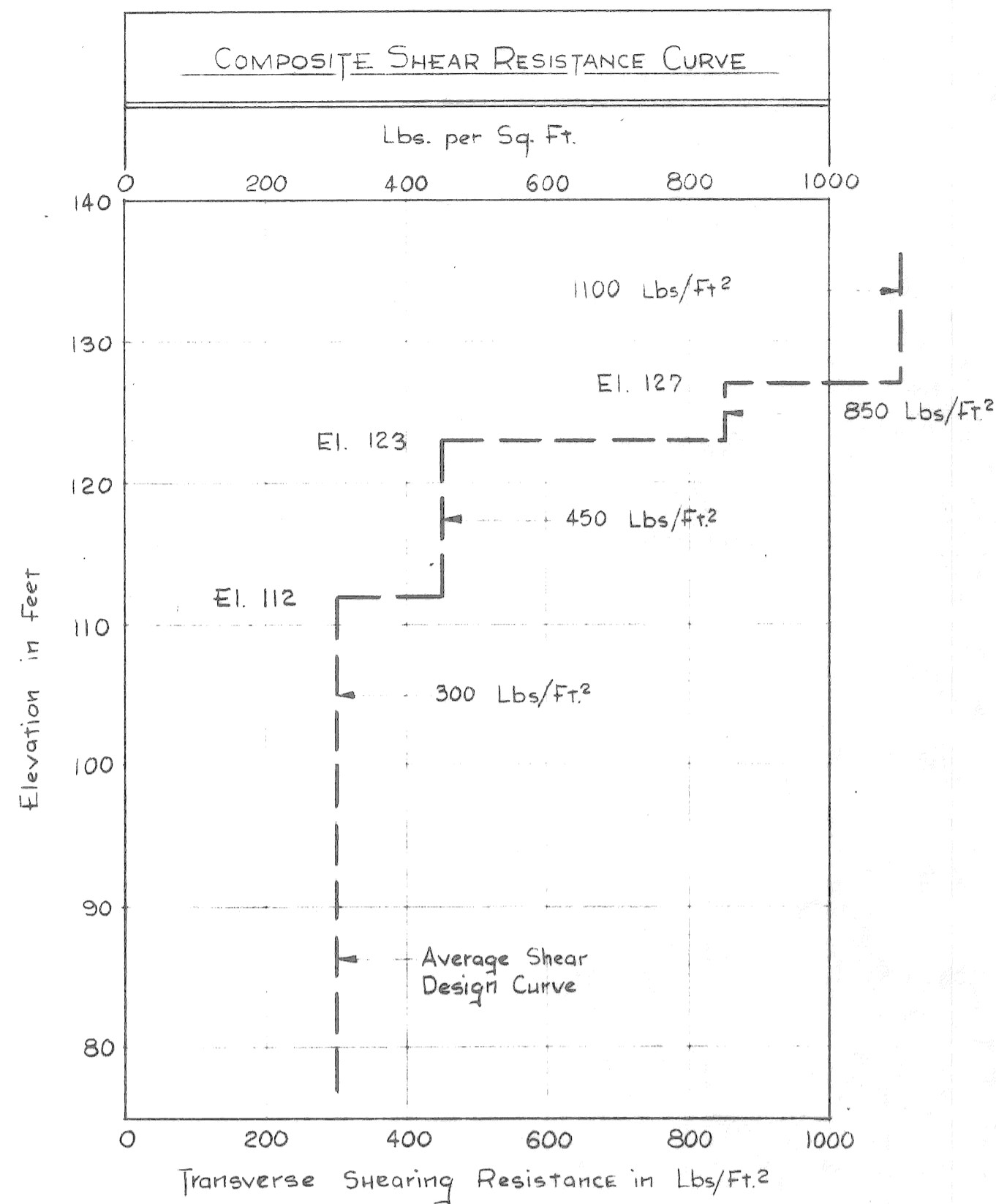
CITY OF DETROIT

DESIGNED BY: *G. Leander* 3-59  
DRAWN BY: *L. B. Jackson* 3-59  
CHECKED BY: *STUBBS* 3-59

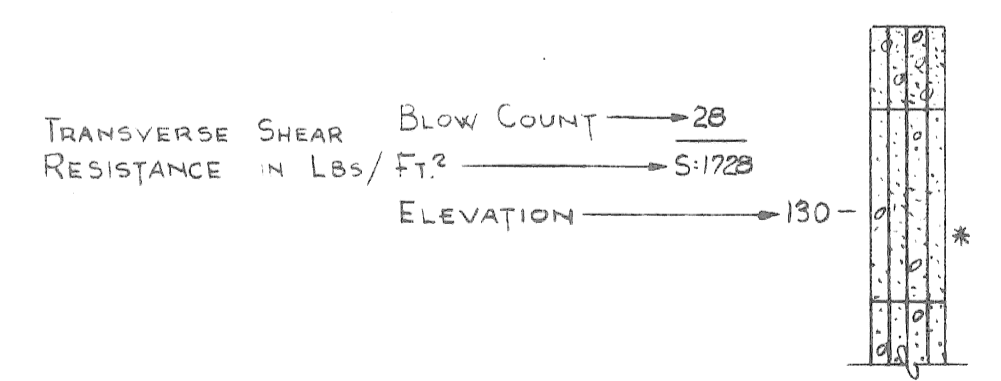
APPROVED: \_\_\_\_\_ COORDINATING ENGINEER  
APPROVED: \_\_\_\_\_ ENGINEER OF DESIGN-CONSULTANTS

82251A C-3

LOG OF BORINGS

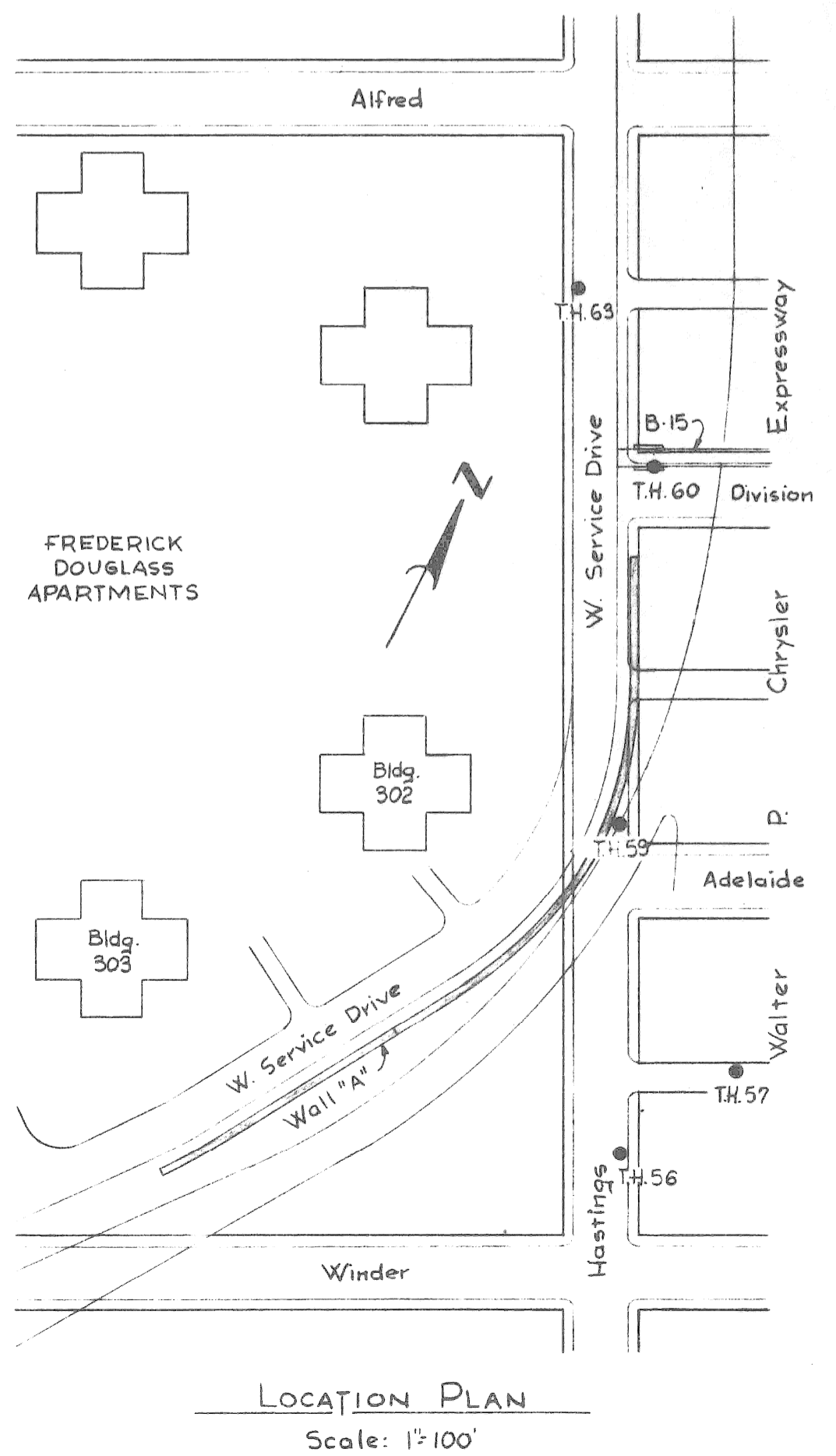


LEGEND



\*Indicates unsuccessful recovery of liner sample.

FOR INFORMATION ONLY  
NOT FOR CONSTRUCTION



NOTE:  
Penetration Resistance (Blow Count) is Measured by the number of blows required to drive a core sampler 1 ft. using a 140# weight falling 30\"/>

PLANS PREPARED BY  
**CITY OF DETROIT**  
DEPARTMENT OF PUBLIC WORKS  
CITY ENGINEERS OFFICE  
BUREAU OF HIGHWAYS AND EXPRESSWAYS

RECOMMENDED FOR APPROVAL: *P.R. Hicks*

NO. \_\_\_\_\_ DESCRIPTION \_\_\_\_\_ DATE \_\_\_\_\_ BY \_\_\_\_\_

REVISIONS

MICHIGAN STATE HIGHWAY DEPARTMENT

CHRYSLER-FISHER INTERCHANGE  
RETAINING WALL "A" NEAR THE FREDERICK DOUGLASS APARTMENTS  
ON THE WALTER P. CHRYSLER EXPRESSWAY IN DETROIT

LOG OF SOIL BORINGS

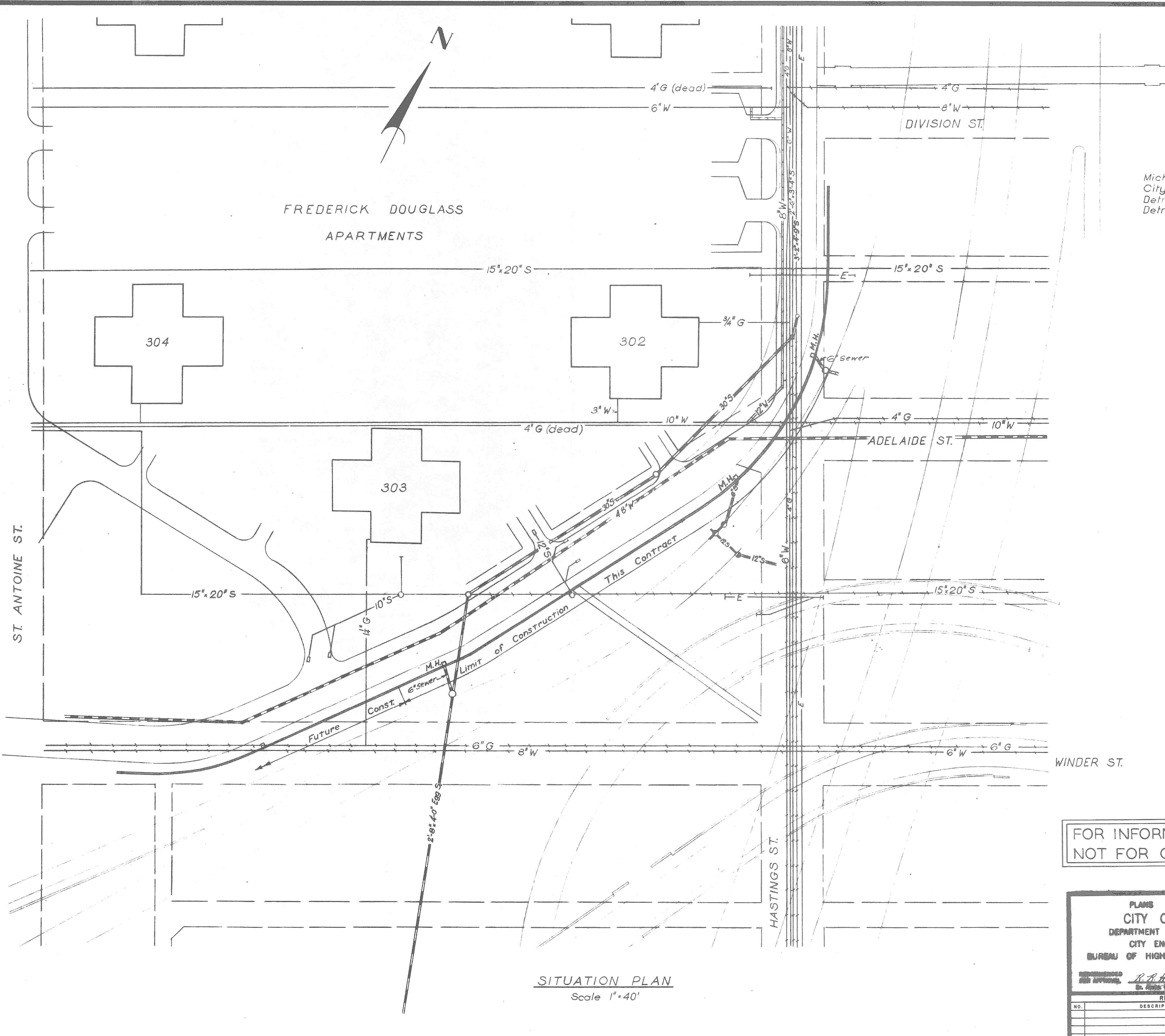
CITY OF DETROIT

APPROVED \_\_\_\_\_ COORDINATING ENGINEER

APPROVED \_\_\_\_\_ ENGINEER OF DESIGN-CONSULTANTS

82251A C-3

CONTROL SECTION 82251B



UTILITY

Mich. Cons. Gas Co.  
City of Detroit Sewers  
Detroit Water Dept.  
Detroit Edison Co.

**LEGEND**

Existing	Deleted or Abandoned	New Work by Others	New Work by Contractor
— G —	← G →	— W —	— S —
— S —	← S →		— W —
— W —	← W →		
— E —			

Retaining Wall Construction and Utility Alterations are included in Package Contract for Control Section 82251B

Construction of 6" Sewer between retaining wall Manholes and expressway drainage system is part of retaining wall construction.

FOR INFORMATION ONLY  
NOT FOR CONSTRUCTION

SITUATION PLAN  
Scale 1" = 40'

CONTROL SECTION 82251B

PLANS PREPARED BY  
CITY OF DETROIT  
DEPARTMENT OF PUBLIC WORKS  
CITY ENGINEERS OFFICE  
BUREAU OF HIGHWAYS AND EXPRESSWAYS

RECOMMENDED FOR APPROVAL: *R.H. Hilde*  
By: *R.H. Hilde*

JOB No. PW897B(2)

NO.	DESCRIPTION	DATE	BY

MICHIGAN STATE HIGHWAY DEPARTMENT

CHRYSLER-FISHER INTERCHANGE  
RETAINING WALL "A" NEAR THE FREDERICK DOUGLASS APARTMENTS  
ON THE WALTER P. CHRYSLER EXPRESSWAY IN DETROIT

CITY OF DETROIT

DESIGNED BY: *G. Malnar* 9-59  
DRAWN BY: *G. Malnar* 5-59  
CHECKED BY: *G. Malnar* 5-59  
APPROVED BY: *STW* 8-59

APPROVED \_\_\_\_\_ COORDINATING ENGINEER  
APPROVED \_\_\_\_\_ ENGINEER OF DESIGN-CONSULTANTS

82251A C-3