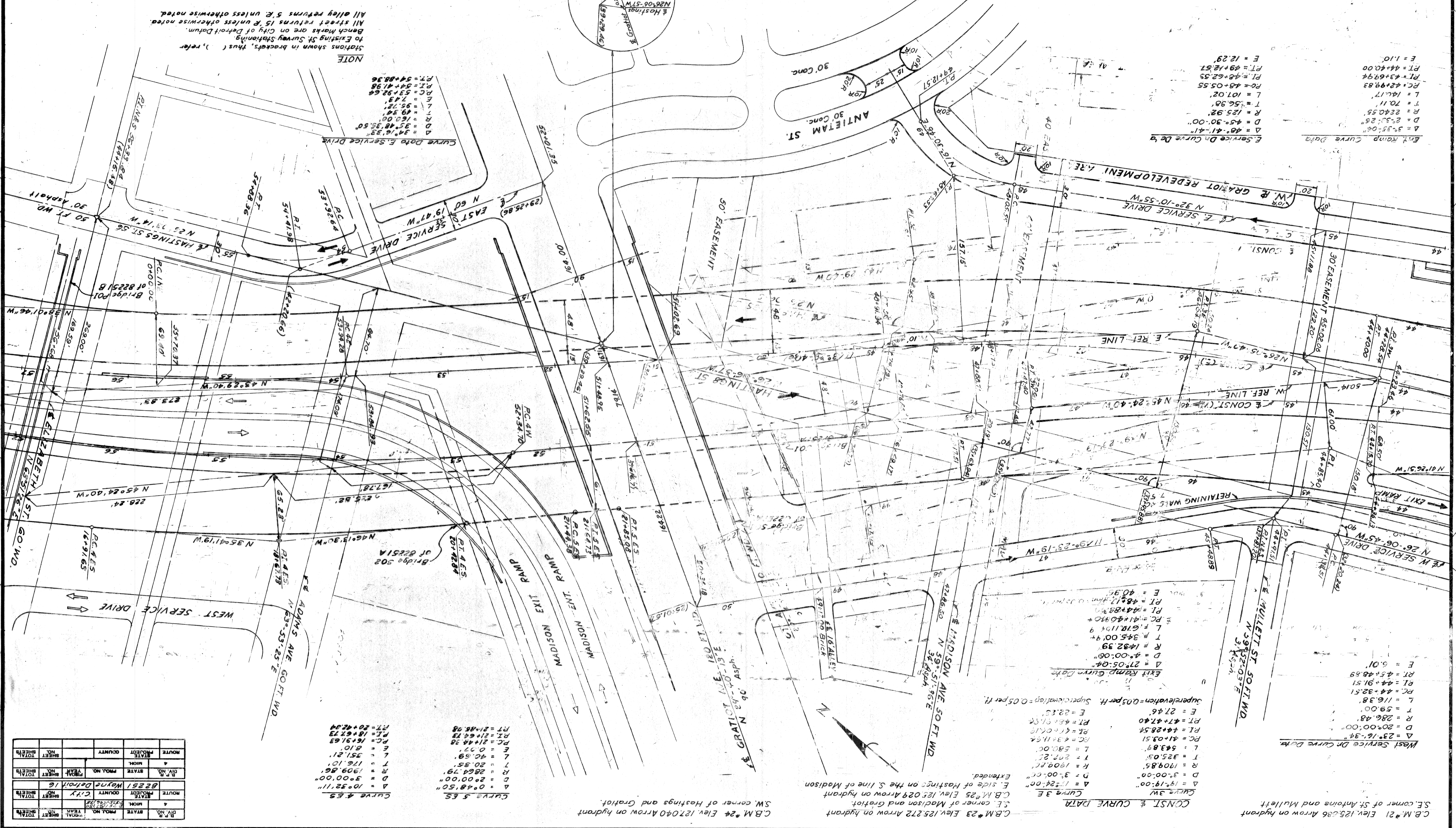


DETAILS OF  
EXPRESSWAY ALIGNMENT



**NOTE**  
Stations shown in brackets, thus ( ), refer to existing St. Survey Stationing.  
Bench marks are on City of Detroit Datum.  
All street returns 15' unless otherwise noted.  
All street returns 5' E unless otherwise noted.

**Curve Data E. Service Drive**  
 Δ = 34°16'33"  
 D = 45°48'35.50"  
 R = 152.00'  
 T = 49.34'  
 L = 95.72'  
 E = 7.43'  
 PC = 53+92.64'  
 PI = 54+41.98'  
 PT = 54+88.36'

**Curve Data E. Service Drive**  
 Δ = 27°05'04"  
 D = 4°00'00"  
 R = 1482.39'  
 T = 345.00'  
 L = 643.89'  
 PC = 41+03.51'  
 PI = 44+28.54'  
 PT = 47+47.40'  
 E = 27.46'

**Curve 3 E**  
 Δ = 19°19'00"  
 D = 3°00'00"  
 R = 1809.85'  
 T = 287.25'  
 L = 580.00'  
 PC = 43+11.94'  
 PI = 47+07.16'  
 PT = 48+17.16'  
 E = 40.99'

**Curve 4 ES**  
 Δ = 10°32'11"  
 D = 2°00'00"  
 R = 1909.86'  
 T = 176.10'  
 L = 46.59'  
 PC = 21+48.38'  
 PI = 21+64.73'  
 PT = 21+85.08'

**Curve 5 ES**  
 Δ = 0°48'50"  
 D = 2°00'00"  
 R = 2148.08'  
 T = 21+85.08'  
 L = 46.59'  
 PC = 21+48.38'  
 PI = 21+64.73'  
 PT = 21+85.08'

**Curve 6 ES**  
 Δ = 10°32'11"  
 D = 2°00'00"  
 R = 1909.86'  
 T = 176.10'  
 L = 46.59'  
 PC = 21+48.38'  
 PI = 21+64.73'  
 PT = 21+85.08'

**Curve 7 ES**  
 Δ = 10°32'11"  
 D = 2°00'00"  
 R = 1909.86'  
 T = 176.10'  
 L = 46.59'  
 PC = 21+48.38'  
 PI = 21+64.73'  
 PT = 21+85.08'

**Curve 8 ES**  
 Δ = 10°32'11"  
 D = 2°00'00"  
 R = 1909.86'  
 T = 176.10'  
 L = 46.59'  
 PC = 21+48.38'  
 PI = 21+64.73'  
 PT = 21+85.08'

**Curve 9 ES**  
 Δ = 10°32'11"  
 D = 2°00'00"  
 R = 1909.86'  
 T = 176.10'  
 L = 46.59'  
 PC = 21+48.38'  
 PI = 21+64.73'  
 PT = 21+85.08'

| ROUTE | CITY  | COUNTY | STATE | PROJ. NO. | YEAR | SHEET NO. | TOTAL SHEETS |
|-------|-------|--------|-------|-----------|------|-----------|--------------|
| 82251 | Wayne | Wayne  | MI    | 1000      | 1968 | 1         | 1            |
| 82251 | Wayne | Wayne  | MI    | 1000      | 1968 | 2         | 2            |

| ROUTE | CITY  | COUNTY | STATE | PROJ. NO. | YEAR | SHEET NO. | TOTAL SHEETS |
|-------|-------|--------|-------|-----------|------|-----------|--------------|
| 82251 | Wayne | Wayne  | MI    | 1000      | 1968 | 1         | 1            |
| 82251 | Wayne | Wayne  | MI    | 1000      | 1968 | 2         | 2            |

| ROUTE | CITY  | COUNTY | STATE | PROJ. NO. | YEAR | SHEET NO. | TOTAL SHEETS |
|-------|-------|--------|-------|-----------|------|-----------|--------------|
| 82251 | Wayne | Wayne  | MI    | 1000      | 1968 | 1         | 1            |
| 82251 | Wayne | Wayne  | MI    | 1000      | 1968 | 2         | 2            |

Scale 1" = 40'

102+800  
102+600  
102+400  
102+200  
102+000  
101+800  
101+600  
101+400  
101+200  
101+000

Scale 1" = 40'

Curve 3 E  
 Δ = 19°19'00"  
 D = 3°00'00"  
 R = 1809.85'  
 T = 287.25'  
 L = 580.00'  
 PC = 43+11.94'  
 PI = 47+07.16'  
 PT = 48+17.16'  
 E = 40.99'

Curve 4 ES  
 Δ = 10°32'11"  
 D = 2°00'00"  
 R = 1909.86'  
 T = 176.10'  
 L = 46.59'  
 PC = 21+48.38'  
 PI = 21+64.73'  
 PT = 21+85.08'

Curve 5 ES  
 Δ = 0°48'50"  
 D = 2°00'00"  
 R = 2148.08'  
 T = 21+85.08'  
 L = 46.59'  
 PC = 21+48.38'  
 PI = 21+64.73'  
 PT = 21+85.08'

Curve 6 ES  
 Δ = 10°32'11"  
 D = 2°00'00"  
 R = 1909.86'  
 T = 176.10'  
 L = 46.59'  
 PC = 21+48.38'  
 PI = 21+64.73'  
 PT = 21+85.08'

Curve 7 ES  
 Δ = 10°32'11"  
 D = 2°00'00"  
 R = 1909.86'  
 T = 176.10'  
 L = 46.59'  
 PC = 21+48.38'  
 PI = 21+64.73'  
 PT = 21+85.08'

Curve 8 ES  
 Δ = 10°32'11"  
 D = 2°00'00"  
 R = 1909.86'  
 T = 176.10'  
 L = 46.59'  
 PC = 21+48.38'  
 PI = 21+64.73'  
 PT = 21+85.08'

Curve 9 ES  
 Δ = 10°32'11"  
 D = 2°00'00"  
 R = 1909.86'  
 T = 176.10'  
 L = 46.59'  
 PC = 21+48.38'  
 PI = 21+64.73'  
 PT = 21+85.08'

Curve 10 ES  
 Δ = 10°32'11"  
 D = 2°00'00"  
 R = 1909.86'  
 T = 176.10'  
 L = 46.59'  
 PC = 21+48.38'  
 PI = 21+64.73'  
 PT = 21+85.08'

Curve 11 ES  
 Δ = 10°32'11"  
 D = 2°00'00"  
 R = 1909.86'  
 T = 176.10'  
 L = 46.59'  
 PC = 21+48.38'  
 PI = 21+64.73'  
 PT = 21+85.08'

Curve 12 ES  
 Δ = 10°32'11"  
 D = 2°00'00"  
 R = 1909.86'  
 T = 176.10'  
 L = 46.59'  
 PC = 21+48.38'  
 PI = 21+64.73'  
 PT = 21+85.08'

Curve 13 ES  
 Δ = 10°32'11"  
 D = 2°00'00"  
 R = 1909.86'  
 T = 176.10'  
 L = 46.59'  
 PC = 21+48.38'  
 PI = 21+64.73'  
 PT = 21+85.08'

Curve 14 ES  
 Δ = 10°32'11"  
 D = 2°00'00"  
 R = 1909.86'  
 T = 176.10'  
 L = 46.59'  
 PC = 21+48.38'  
 PI = 21+64.73'  
 PT = 21+85.08'

Curve 15 ES  
 Δ = 10°32'11"  
 D = 2°00'00"  
 R = 1909.86'  
 T = 176.10'  
 L = 46.59'  
 PC = 21+48.38'  
 PI = 21+64.73'  
 PT = 21+85.08'

102+800  
102+600  
102+400  
102+200  
102+000  
101+800  
101+600  
101+400  
101+200  
101+000



|       |    |                            |
|-------|----|----------------------------|
| DATE  | BY | OPERATION                  |
| 1/6/1 |    | PRELIMINARY R.O.W. CHECKED |
| 1/6/1 |    | FINAL DESIGN CHECKED       |
| 1/6/1 |    | TRACED                     |
| 1/6/1 |    | FINAL R.O.W. CHECK         |
| 1/6/1 |    | QUANTITIES CHECKED         |
| 1/6/1 |    | SOULD                      |

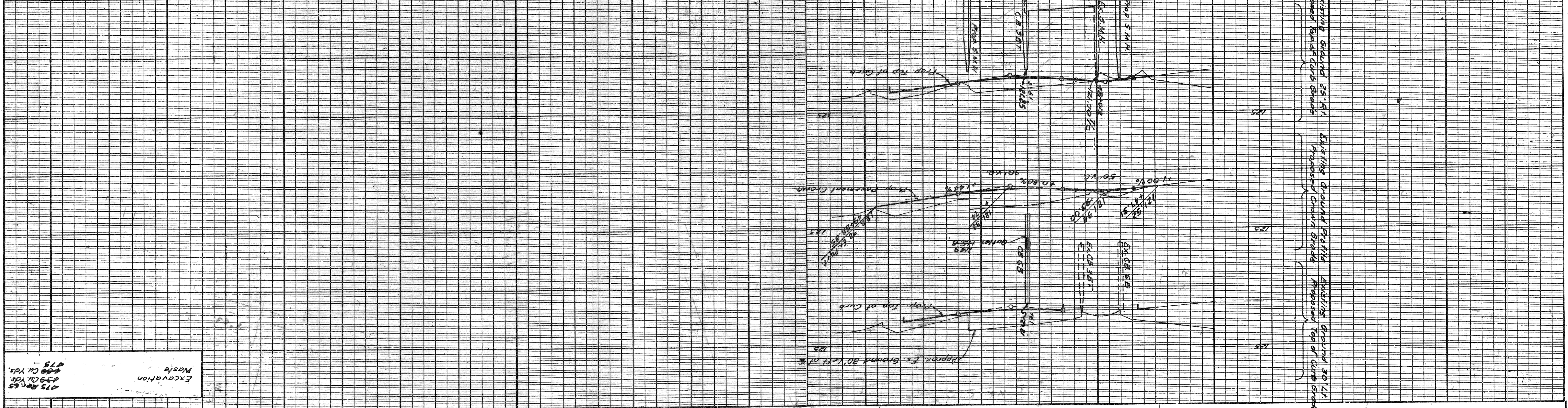
|       |    |                   |
|-------|----|-------------------|
| DATE  | BY | OPERATION         |
| 1/6/1 |    | PRELIMINARY GRADE |
| 1/6/1 |    | PROF. E. CHECKED  |
| 1/6/1 |    | PLAN CHECKED      |
| 1/6/1 |    | PLAN PLOTTED      |
| 1/6/1 |    | SURVEYED          |

PLANS FOR  
CITY OF DETROIT  
DEPARTMENT OF PUBLIC WORKS  
CITY ENGINEERS OFFICE  
BUREAU OF HIGHWAYS AND EXPRESSWAYS

|       |    |                   |
|-------|----|-------------------|
| DATE  | BY | OPERATION         |
| 1/6/1 |    | PRELIMINARY GRADE |
| 1/6/1 |    | PROF. E. CHECKED  |
| 1/6/1 |    | PLAN CHECKED      |
| 1/6/1 |    | PLAN PLOTTED      |
| 1/6/1 |    | SURVEYED          |

82251A C-3  
PROJECT NO. 82251  
SHEET NO. 39

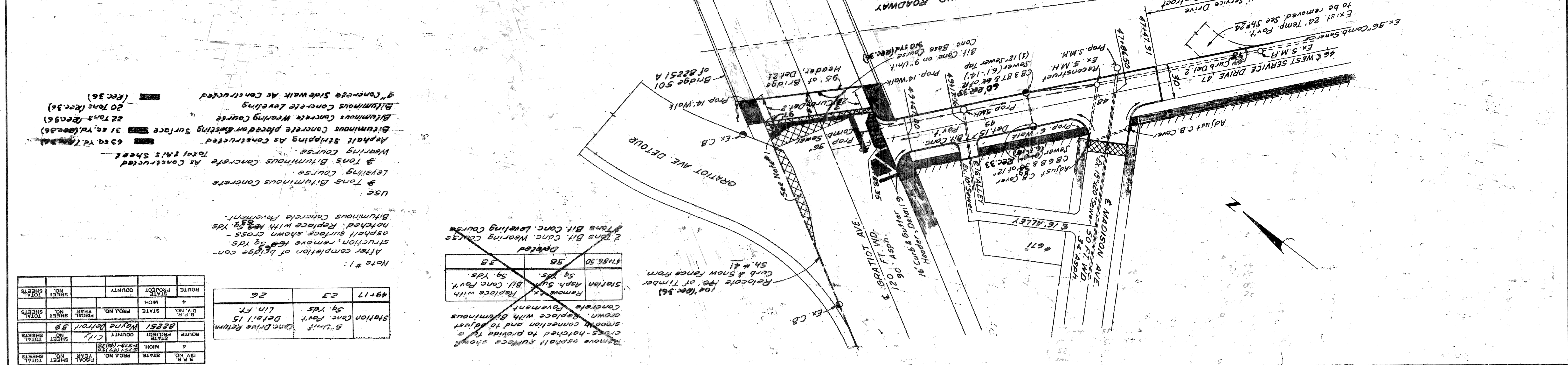
PLAN AND PROFILE  
WEST SERVICE DRIVE  
STA. 47+47.31 TO STA. 49+88.35



Excavation  
Waste  
475 Rec. 55  
439 Cu. Yds.  
475 -

Notes:  
For Alignment and Bench Marks. See 5A\* 16  
All street returns 15' unless otherwise noted.  
All alley returns 5' unless otherwise noted.  
Existing sidewalks to remain.

All quantities this sheet  
Control Section 82251A C-3



Use:  
9 Tons Bituminous Concrete  
Levelling Course  
9 Tons Bituminous Concrete  
As Constructed  
Wearing Course  
31 sq. Yd. (Rec. 36)  
Asphalt Striping As Constructed  
Bituminous Concrete placed on Existing Surface  
22 Tons (Rec. 36)  
Bituminous Concrete Levelling  
20 Tons (Rec. 36)  
9 Concrete Sidewalk As Constructed  
(Rec. 36)

Note #1:  
After completion of bridge construction, remove hatched asphalt surface shown cross-hatched. Replace with 1.5" 5g. Yds. Bituminous Concrete Pavement.  
Use:  
9 Tons Bituminous Concrete  
Levelling Course  
9 Tons Bituminous Concrete  
As Constructed  
Wearing Course  
31 sq. Yd. (Rec. 36)  
Asphalt Striping As Constructed  
Bituminous Concrete placed on Existing Surface  
22 Tons (Rec. 36)  
Bituminous Concrete Levelling  
20 Tons (Rec. 36)  
9 Concrete Sidewalk As Constructed  
(Rec. 36)

|          |       |           |      |           |              |
|----------|-------|-----------|------|-----------|--------------|
| B.P. NO. | STATE | PROJ. NO. | YEAR | SHEET NO. | TOTAL SHEETS |
| 4        | MICH. | 82251     | 1979 | 39        | 59           |
| B.P. NO. | STATE | PROJ. NO. | YEAR | SHEET NO. | TOTAL SHEETS |
| 49+17    | MICH. | 82251     | 1979 | 23        | 26           |

Station Conc. Pavt. 5g. Yds  
8" Unit Conc. Drive Return  
Detail 15  
Lin. Ft.

Remove asphalt surface shown cross-hatched and to adjust smooth connection and to adjust concrete pavement.  
Relocate top of Timber Curb & Snow Fence from 5A\* 41  
10' (Rec. 36)

|   |          |
|---|----------|
| Station Conc. Pavt.                           | 5g. Yds. |
| Remove Ex. Bit. Conc. Pavt.                   | 5g. Yds. |
| Station Asp. Sur. Bit. Conc. Pavt.            | 5g. Yds. |
| Relocate top of Timber Curb & Snow Fence from | 5A* 41   |
| 10' (Rec. 36)                                 |          |

Deleted  
47+86.50  
3B  
Station Asp. Sur. Bit. Conc. Pavt.  
5g. Yds.