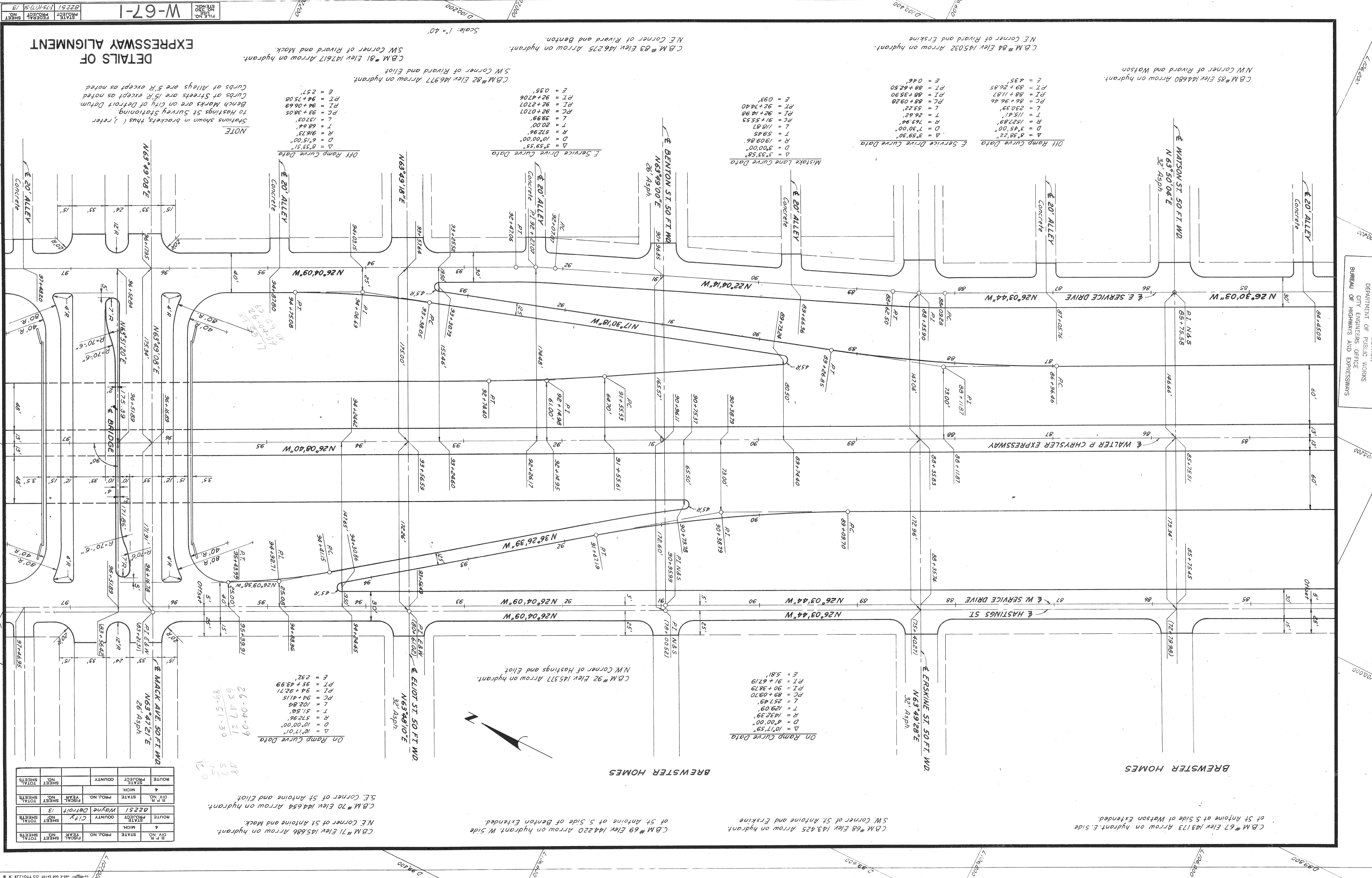


PLANS PREPARED BY
CITY OF DETROIT
DEPARTMENT OF PUBLIC WORKS
CITY ENGINEERS' OFFICE
BUREAU OF HIGHWAYS AND EXPRESSWAYS

DETAILS OF EXPRESSWAY ALIGNMENT

FILE NO. 15100
SHEET NO. 13
PROJECT NO. W-67-1
STATE FEDERAL PROJECT NO. 02251



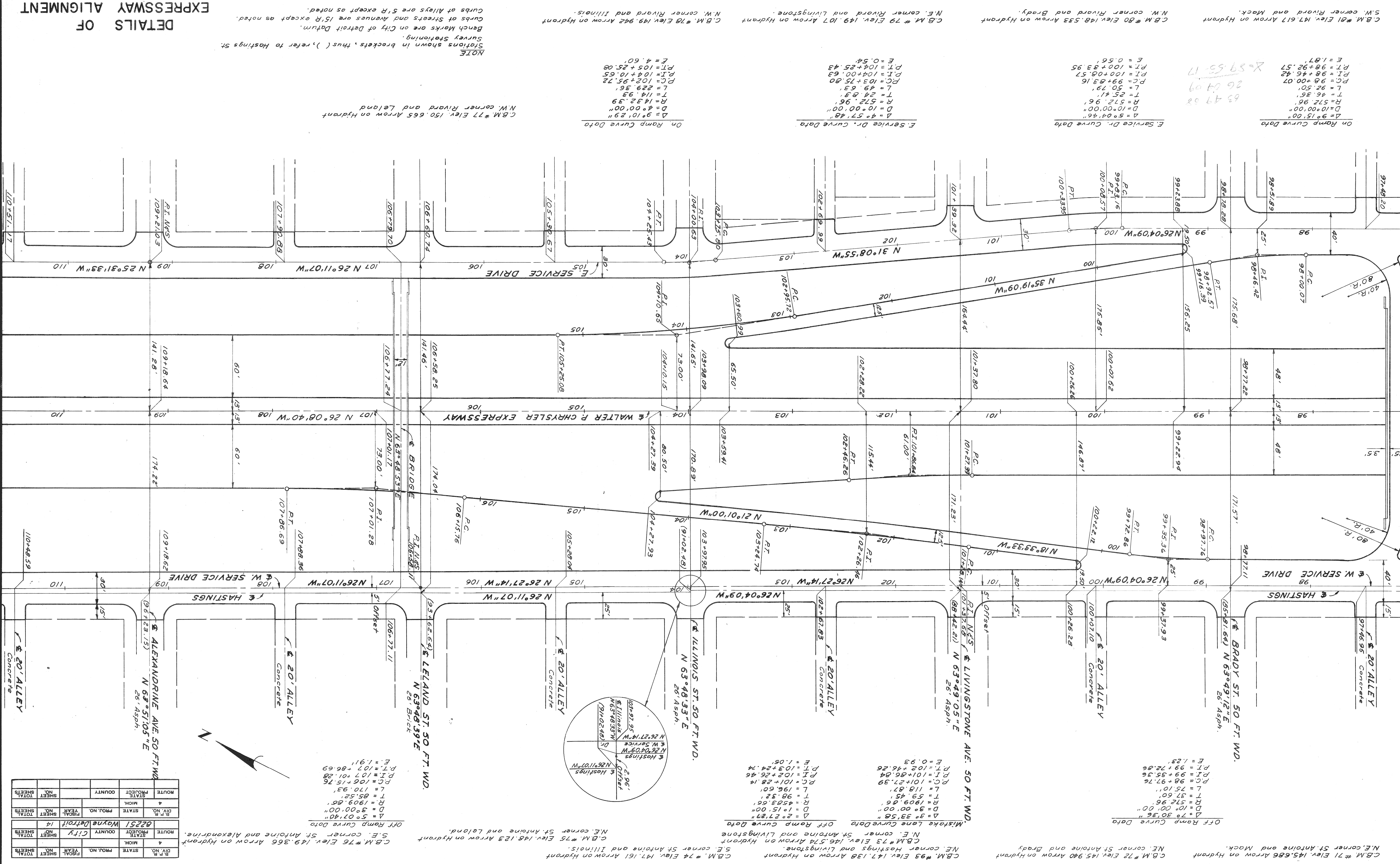
B.P. NO.	STATE	PROJ. NO.	YEAR	SHEET NO.	TOTAL SHEETS
4	MI.	02251	1951	13	13
CITY OF DETROIT					
B.P. NO.	STATE	PROJ. NO.	YEAR	SHEET NO.	TOTAL SHEETS
4	MI.	02251	1951	13	13
CITY OF DETROIT					

26-04-09
63-47-21
89-51-30
12

Scale: 1" = 40'

Scale: 1" = 40'

DETAILS OF EXPRESSWAY ALIGNMENT



B.P. NO.	STATE	PROJ. NO.	CITY	SHEET NO.	TOTAL SHEETS
14	MI	02251	Wayne	14	14

Off Ramp Curve Data
 C.B.M. #76 Elev. 149.366 Arrow on Hydrant
 N.E. corner St. Antoine and Alexandrine.
 S.E. corner St. Antoine and Alexandrine.
 D = 5°07'40"
 R = 3°00'00"
 T = 1909.26'
 L = 170.93'
 P.C. = 106+15.76
 P.T. = 107+01.28
 E = 1.91'

Off Ramp Curve Data
 C.B.M. #74 Elev. 147.151 Arrow on Hydrant
 S.E. corner St. Antoine and Livingston.
 N.E. corner St. Antoine and Livingston.
 D = 2°27'27"
 R = 1°15'00"
 T = 4583.66'
 L = 196.60'
 P.C. = 101+28.14
 P.T. = 102+26.46
 E = 1.05'

Off Ramp Curve Data
 C.B.M. #75 Elev. 148.123 Arrow on Hydrant
 N.E. corner St. Antoine and Leland.
 S.E. corner St. Antoine and Leland.
 D = 5°07'40"
 R = 3°00'00"
 T = 1909.26'
 L = 170.93'
 P.C. = 106+15.76
 P.T. = 107+01.28
 E = 1.91'

Off Ramp Curve Data
 C.B.M. #77 Elev. 150.665 Arrow on Hydrant
 N.W. corner Rivard and Leland.
 D = 4°00'00"
 R = 1432.39'
 T = 114.93'
 L = 229.36'
 P.C. = 102+55.72
 P.T. = 104+10.65
 E = 4.60'

Off Ramp Curve Data
 E. Service Dr. Curve Data
 D = 4°00'00"
 R = 572.96'
 T = 25.41'
 L = 49.63'
 P.C. = 103+75.80
 P.T. = 104+00.63
 E = 0.54'

Off Ramp Curve Data
 E. Service Dr. Curve Data
 D = 5°04'48"
 R = 10°00'00"
 T = 572.96'
 L = 49.63'
 P.C. = 103+75.80
 P.T. = 104+00.63
 E = 0.54'

Off Ramp Curve Data
 E. Service Dr. Curve Data
 D = 9°15'00"
 R = 10°00'00"
 T = 572.96'
 L = 49.63'
 P.C. = 103+75.80
 P.T. = 104+00.63
 E = 0.54'

Off Ramp Curve Data
 E. Service Dr. Curve Data
 D = 9°15'00"
 R = 10°00'00"
 T = 572.96'
 L = 49.63'
 P.C. = 103+75.80
 P.T. = 104+00.63
 E = 0.54'

NOTE
 Stations shown in brackets (), refer to Hastings St.
 Survey Stationing.
 Bench Marks are on City of Detroit Datum.
 Curbs of Streets and Avenues are 15'R, except as noted.
 Curbs of Alleys are 5'R, except as noted.