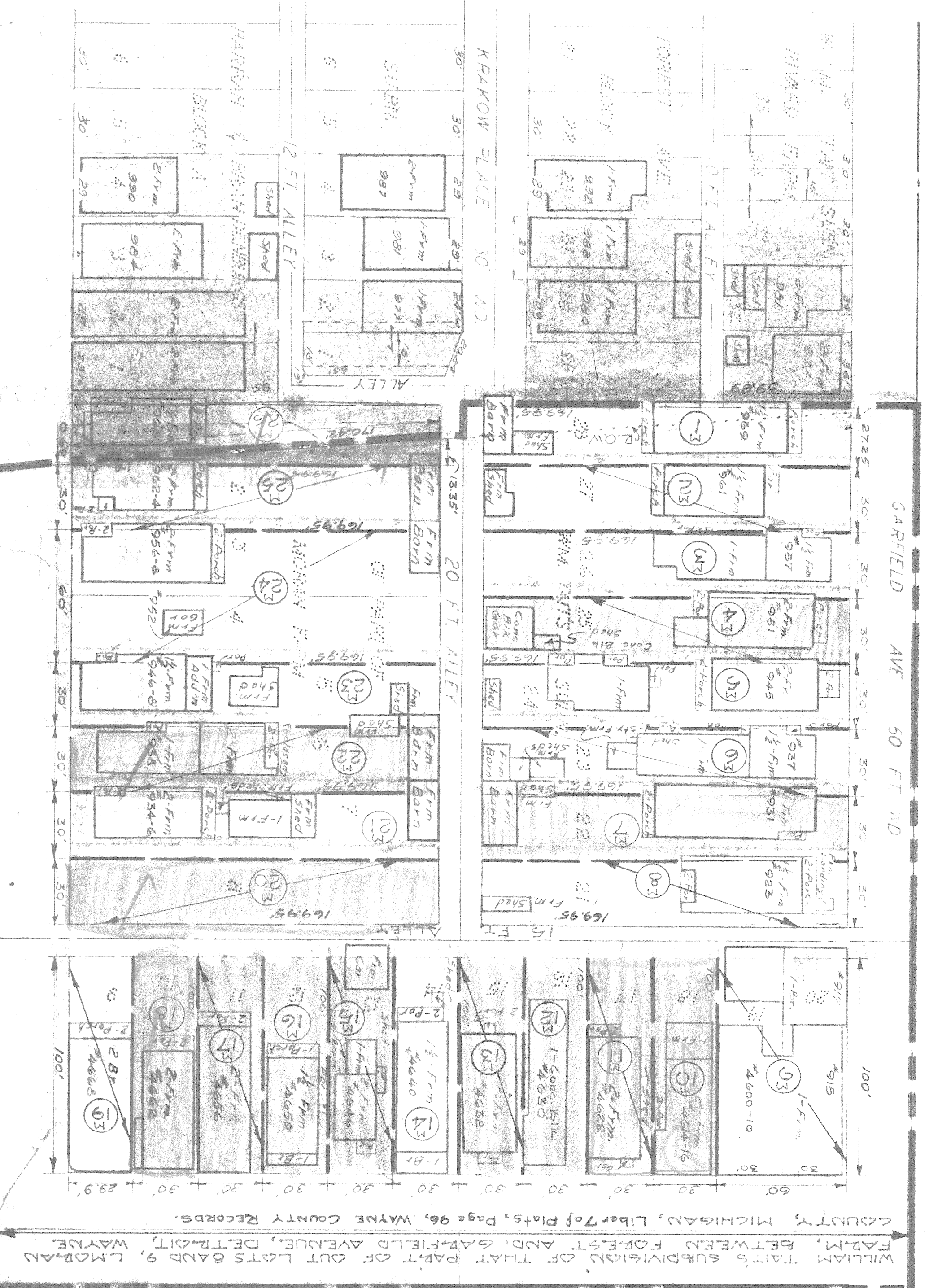


HASTINGS 50'

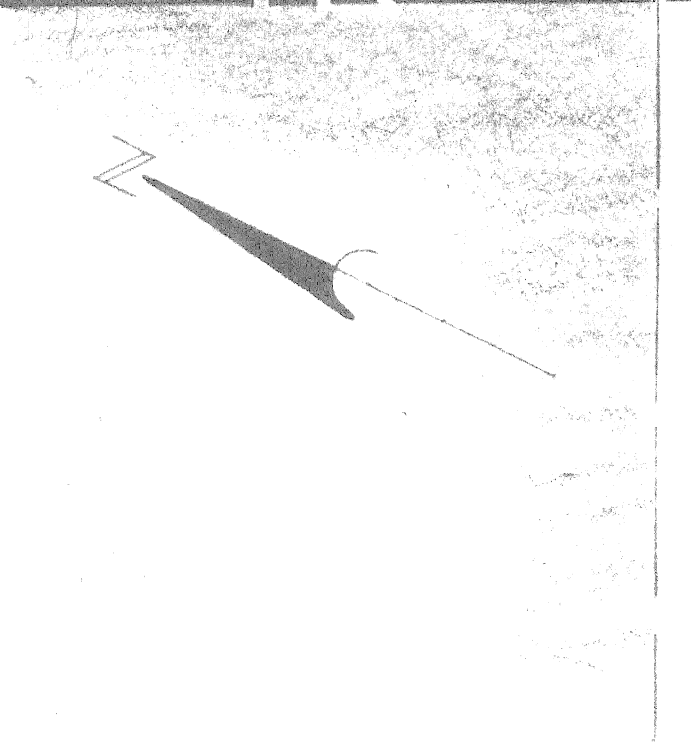
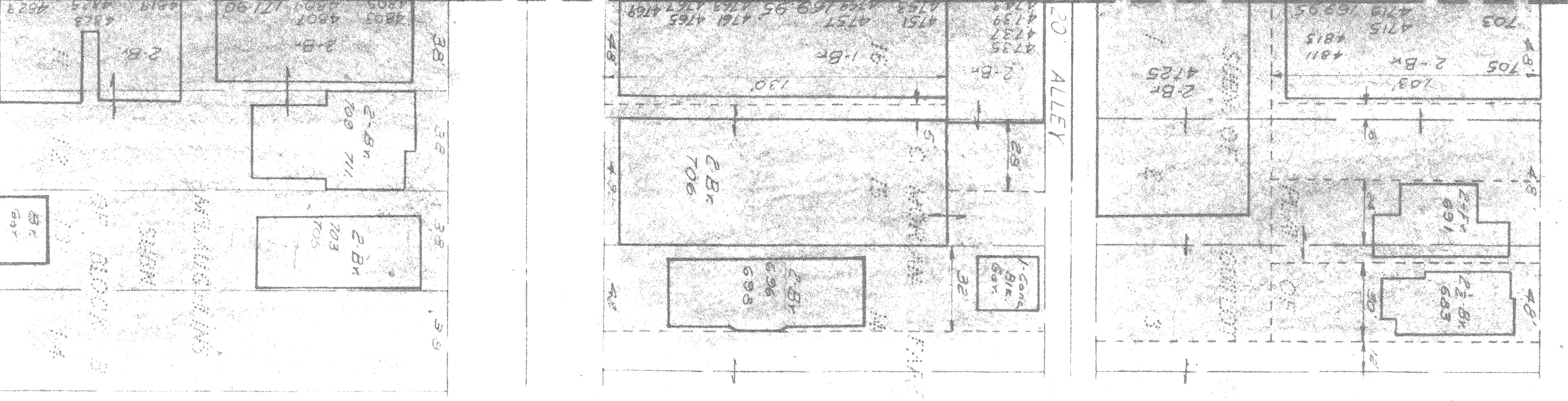


WILLIAM TATTS SUBDIVISION OF THAT PART OF LOTS 6 AND 7 AND THE EAST HALF OF LOT 8, BETWEEN FOREST AVENUE AND GARFIELD AVENUE, DETROIT, WAYNE COUNTY, MICHIGAN, LIBER 70 of Plats, Page 96, WAYNE COUNTY RECORDS.

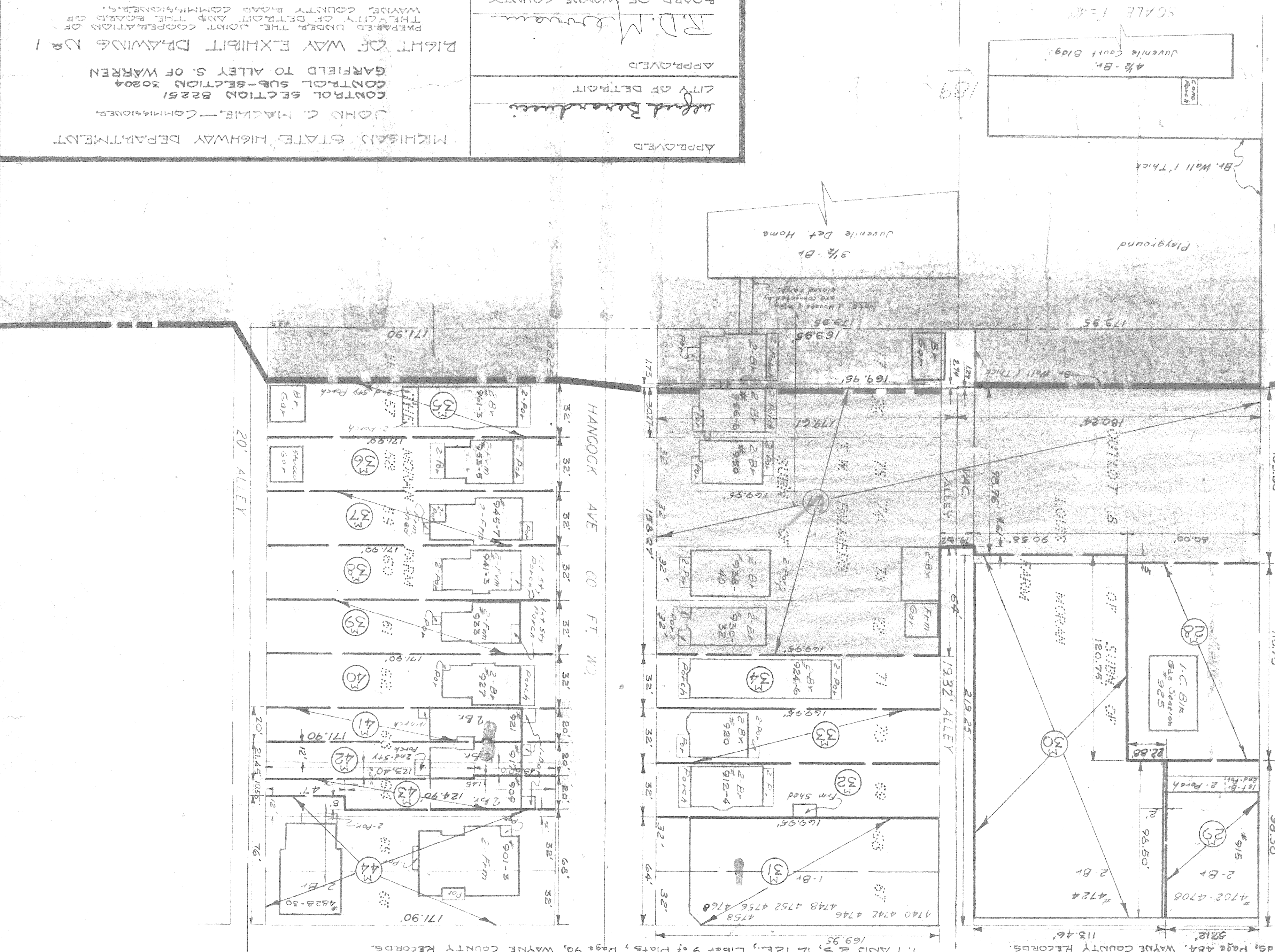
PART OF OUT LOT 8 OF SUB. OF FARM, RECEIVED APRIL 26, 1849, LIBER 35 of Plats, Page 464, WAYNE COUNTY RECORDS.

T. W. PALMER'S SUBDIVISION OF OUT LOTS 6 AND 7 AND THE EAST HALF OF LOT 8, BETWEEN FOREST AVENUE AND GARFIELD AVENUE, DETROIT, WAYNE COUNTY RECORDS, LIBER 93, PAGE 93, WAYNE COUNTY RECORDS, MICH.

DIVISION "M"



SCALE 1"=40'



APPROVED: *J. D. M. [Signature]*
CITY OF DETROIT

APPROVED: *[Signature]*
MICHIGAN STATE HIGHWAY DEPARTMENT

JOHN C. MACKIE, Commissioner

CONTROL SECTION 82251
GARFIELD TO ALLEY S. OF WARREN

RIGHT OF WAY EXHIBIT DRAWING NO. 1

PREPARED UNDER THE JOINT COOPERATION OF
THE CITY OF DETROIT AND THE BOARD OF
WAYNE COUNTY ROAD COMMISSIONERS.

BOARD OF WAYNE COUNTY
ROAD COMMISSIONERS

County Case No. 1000

WALTER F. CHRYSLER EXPRESSWAY
DIVISION "M"

SHEET 1 OF 2 SHEETS
JOB No. 897 B(4)
DRWG No. 12
DATE 1 3 53

CITY OF DETROIT
DEPARTMENT OF PUBLIC WORKS
CITY ENGINEER'S OFFICE
BUREAU OF HIGHWAYS AND EXPRESSWAYS

DESIGNED BY	APPROVED	REVISIONS LOCATED BY COORDINATES ON SHEET
DRAWN BY		
TRACED BY		
CHECKED BY		
DESIGNED BY		
DRAWN BY		
TRACED BY		
CHECKED BY		
DESIGNED BY		

