

| NO. | DATE | DESCRIPTION |
|-----|------|-------------|
|     |      |             |
|     |      |             |
|     |      |             |
|     |      |             |
|     |      |             |
|     |      |             |
|     |      |             |
|     |      |             |
|     |      |             |
|     |      |             |
|     |      |             |
|     |      |             |
|     |      |             |
|     |      |             |
|     |      |             |
|     |      |             |
|     |      |             |
|     |      |             |
|     |      |             |
|     |      |             |
|     |      |             |
|     |      |             |
|     |      |             |
|     |      |             |
|     |      |             |
|     |      |             |
|     |      |             |
|     |      |             |
|     |      |             |
|     |      |             |
|     |      |             |
|     |      |             |
|     |      |             |
|     |      |             |
|     |      |             |
|     |      |             |
|     |      |             |
|     |      |             |
|     |      |             |
|     |      |             |
|     |      |             |
|     |      |             |
|     |      |             |
|     |      |             |
|     |      |             |
|     |      |             |
|     |      |             |
|     |      |             |
|     |      |             |
|     |      |             |
|     |      |             |
|     |      |             |
|     |      |             |
|     |      |             |

DESIGNED BY: M. NOWALSKI  
 DRAWN BY: M. NOWALSKI  
 TRACED BY:  
 CHECKED BY: S. WILLIAMS

APPROVED:  
 HIGHWAY & EXPRESSWAY ENGINEER

CITY OF DETROIT  
 DEPARTMENT OF PUBLIC WORKS  
 CITY ENGINEER'S OFFICE  
 BUREAU OF HIGHWAYS AND EXPRESSWAYS

WALTER P. CHRYSLER EXPRESSWAY  
 DIVISION "E"

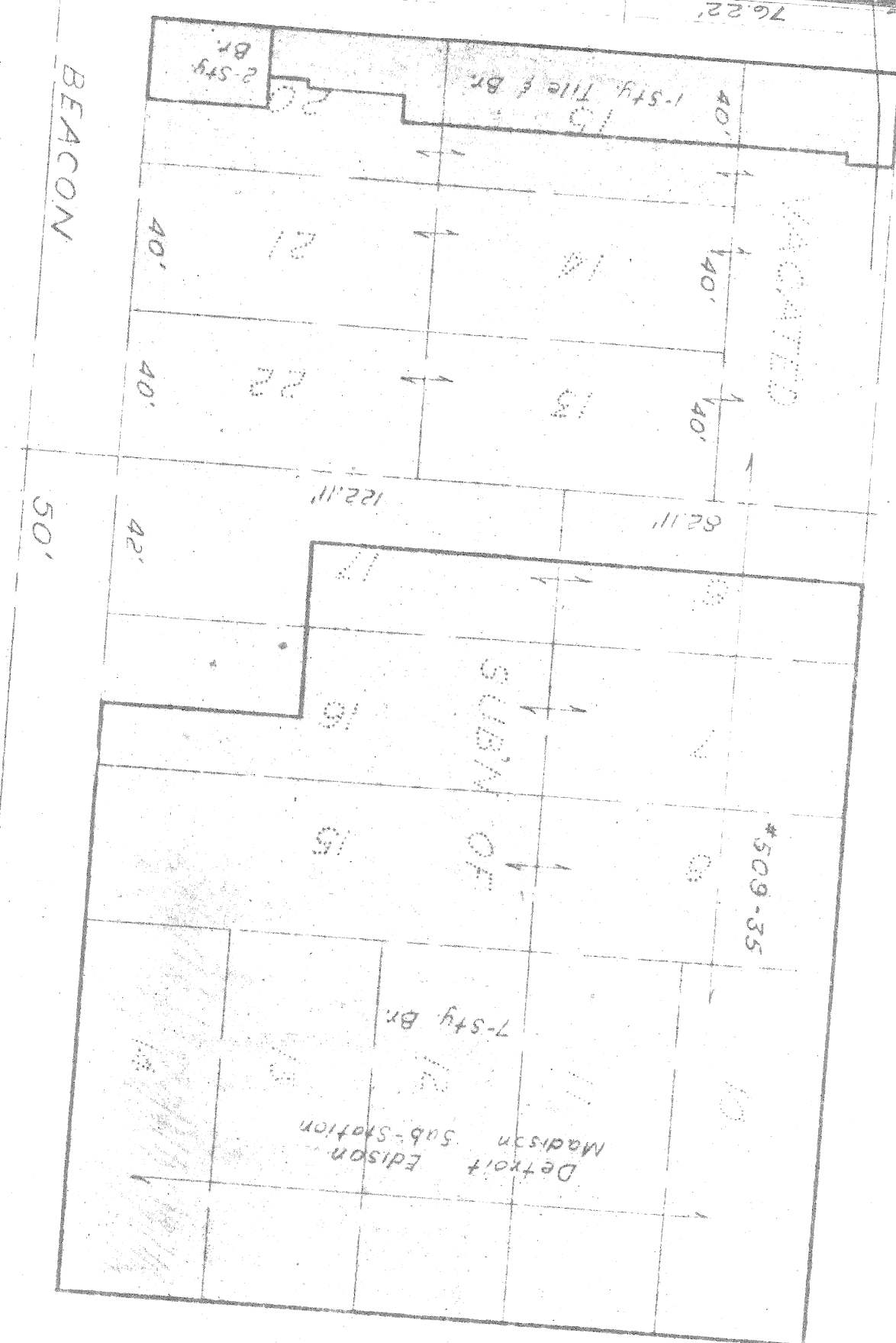
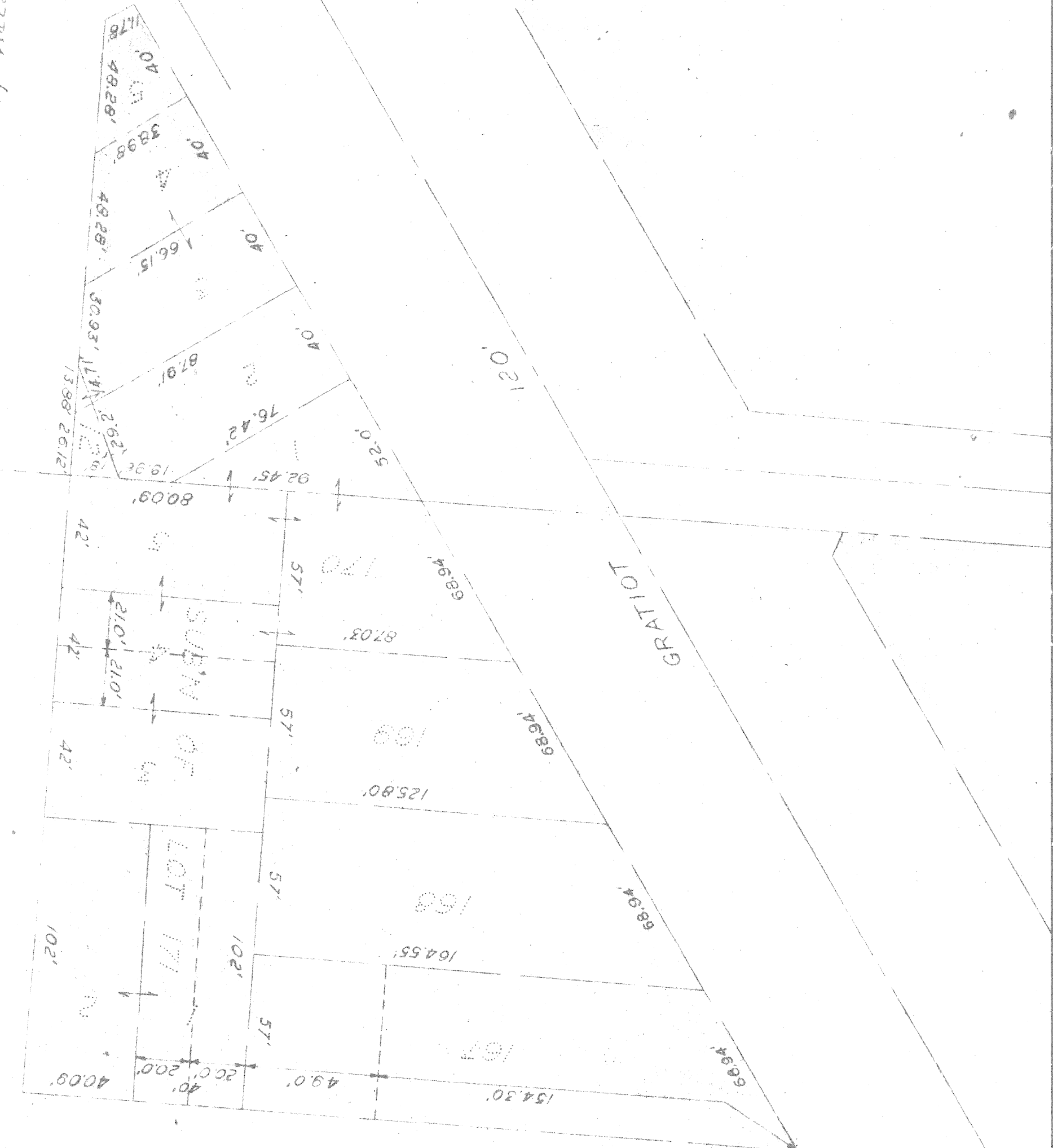
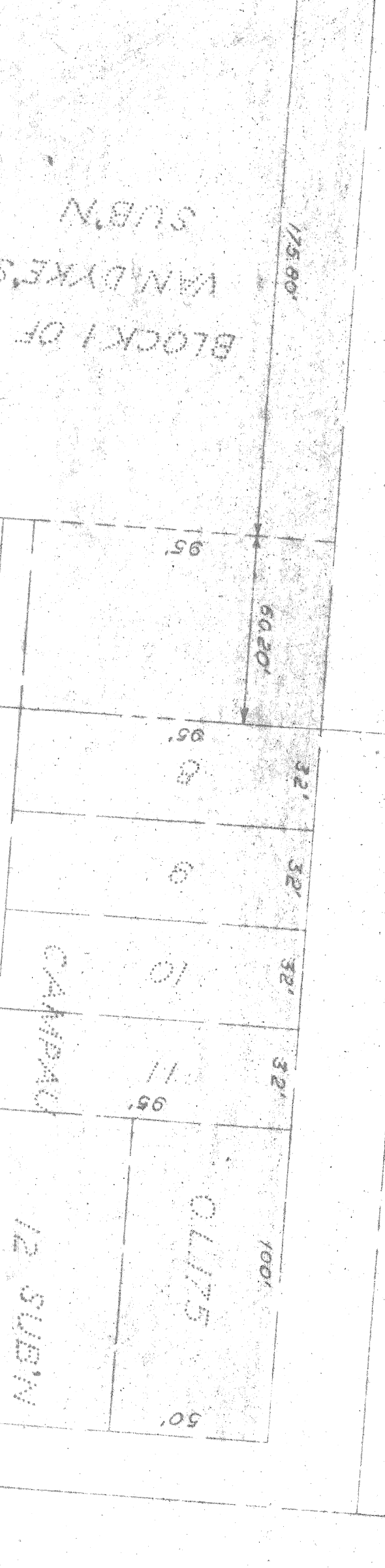
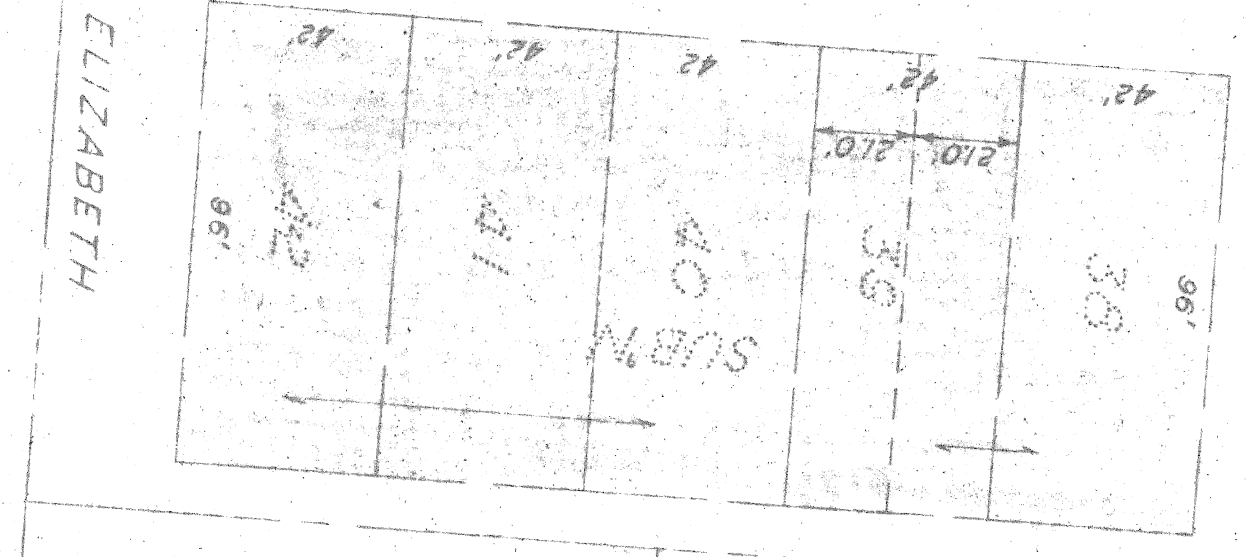
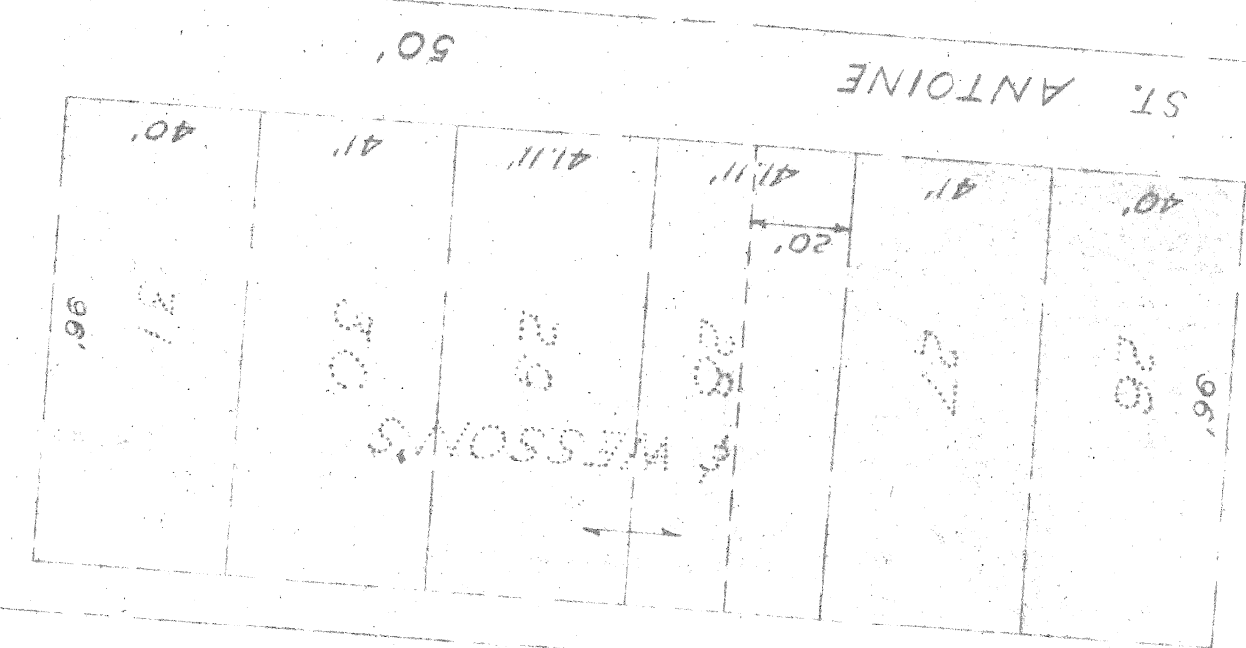
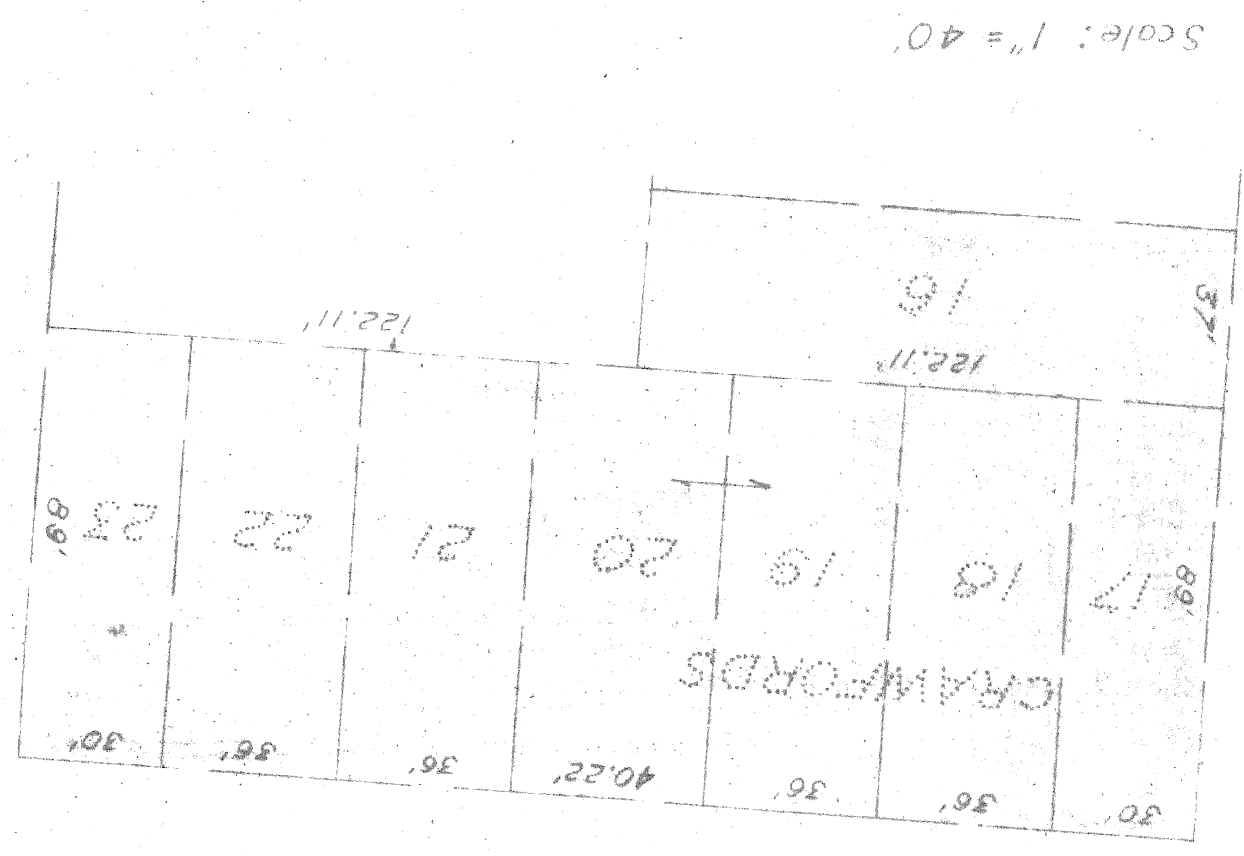
SHEET 1 OF 3 SHEETS  
 JOB NO. 897 B(1)  
 DRWG NO. 5+A  
 DATE 1-29-59

APPROVED: *John C. Mackie*  
 CITY OF DETROIT  
 COUNTY JUDGE  
 BOARD OF WAYNE COUNTY ROAD COMMISSIONERS  
 COUNTY JOB NO. 1000  
 COURTESY SECTION 82251  
 CONTROL 402-SECTION 3080-02  
 EIGHTH TO ALLEY SOUTH OF E. VERNON  
 RIGHT OF WAY EXHIBIT DRAWING U#1  
 PREPARED BY JOHN COOPERATION OF THE CITY OF DETROIT AND THE BOARD OF WAYNE COUNTY ROAD COMMISSIONERS



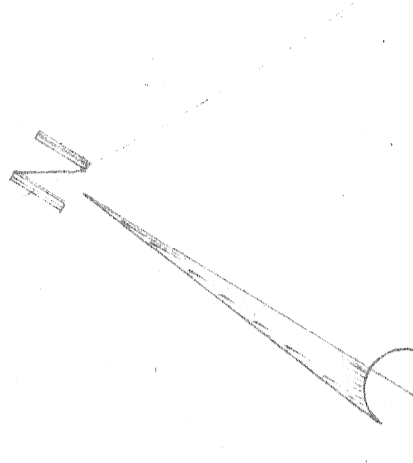
PART OF THE ANTOINE BEAUBIEN ESTATE, BEAUBIEN TRACT, LIBER 407, WAYNE COUNTY RECORDS  
 ELIZABETH TRACT, LIBER 407, WAYNE COUNTY RECORDS

SECTION OF CANE & WESONS' FARM RECORDED FEB. 19, 1849, Liber 35 of Deeds, Page 200 1/2  
 Wayne County Records



DIVISION "E"  
 Gratiot to Alley South of E. Vernor

40 FT PUBLIC EASEMENT



General Revisions A.P.6.

| NO. | DESCRIPTION              | DATE    | BY   |
|-----|--------------------------|---------|------|
| 1   | Blot Locations Corrected | 5/24/21 | J.P. |
| 2   |                          |         |      |
| 3   |                          |         |      |
| 4   |                          |         |      |
| 5   |                          |         |      |
| 6   |                          |         |      |
| 7   |                          |         |      |
| 8   |                          |         |      |
| 9   |                          |         |      |
| 10  |                          |         |      |

|             |                       |
|-------------|-----------------------|
| DESIGNED BY | G. Mizel & L. Jackson |
| DRAWN BY    | G. Mizel & L. Jackson |
| TRACED BY   |                       |
| CHECKED BY  | J. Kawana, E. Brown   |

|             |                       |
|-------------|-----------------------|
| APPROVED:   |                       |
| DESIGNED BY | G. Mizel & L. Jackson |
| DRAWN BY    | G. Mizel & L. Jackson |
| TRACED BY   |                       |
| CHECKED BY  | J. Kawana, E. Brown   |
| DESIGNED BY | G. Mizel & L. Jackson |
| DRAWN BY    | G. Mizel & L. Jackson |
| TRACED BY   |                       |
| CHECKED BY  | J. Kawana, E. Brown   |

CITY OF DETROIT  
DEPARTMENT OF PUBLIC WORKS  
CITY ENGINEER'S OFFICE  
BUREAU OF HIGHWAYS AND EXPRESSWAYS

WALTER P. CHRYSLER EXPRESSWAY  
DIVISION "E"

|                     |
|---------------------|
| SHEET 2 OF 3 SHEETS |
| JOB No. 97-B (1)    |
| DRWG No. 5          |
| DATE 5-16-58        |

APPROVED: *John C. Mackie*  
CITY OF DETROIT

APPROVED: *R.D. Williams*  
BOARD OF WAYNE COUNTY ROAD COMMISSIONERS

MICHIGAN STATE HIGHWAY DEPARTMENT  
JOHN C. MACKIE - COMMISSIONER  
CONTROL SECTION 2121  
SPATIAL TO ALLEY SOUTH OF E. VANHORN  
PREPARED BY JOHN EXHIBIT DRAWING 112  
OF DETROIT AND THE BOARD OF WAYNE COUNTY  
ROAD COMMISSIONERS  
COUNTY JOB #1000



