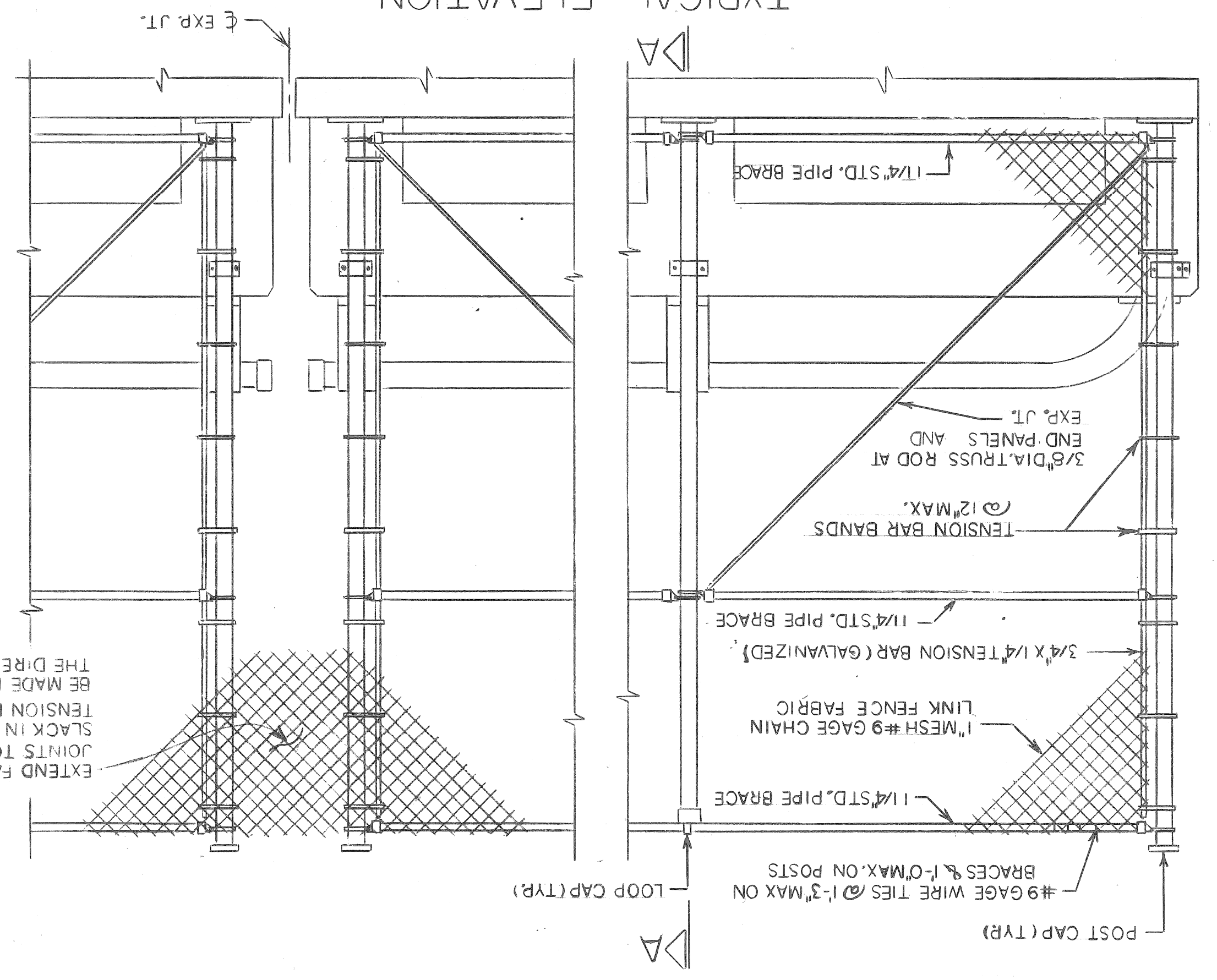
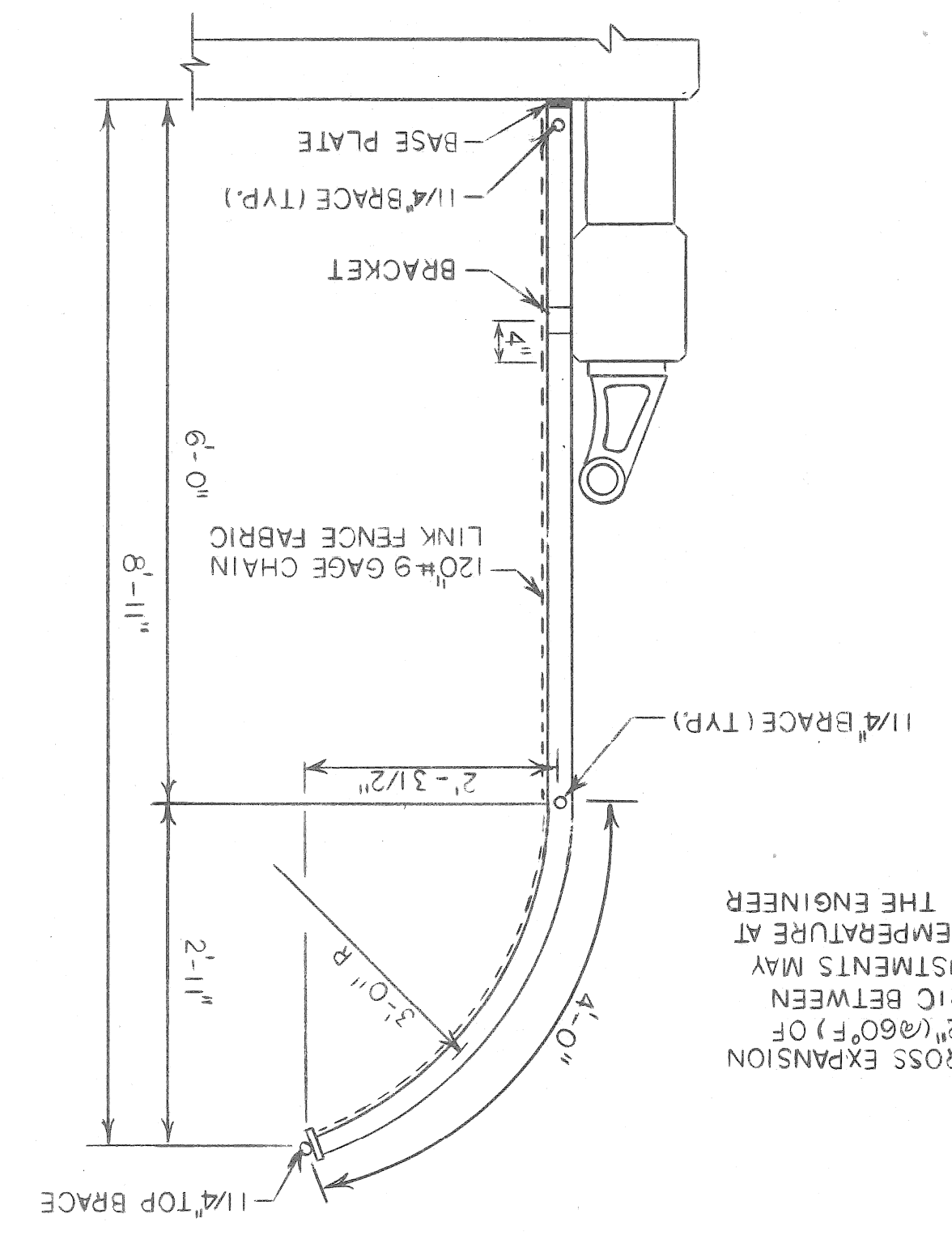


TYPICAL ELEVATION

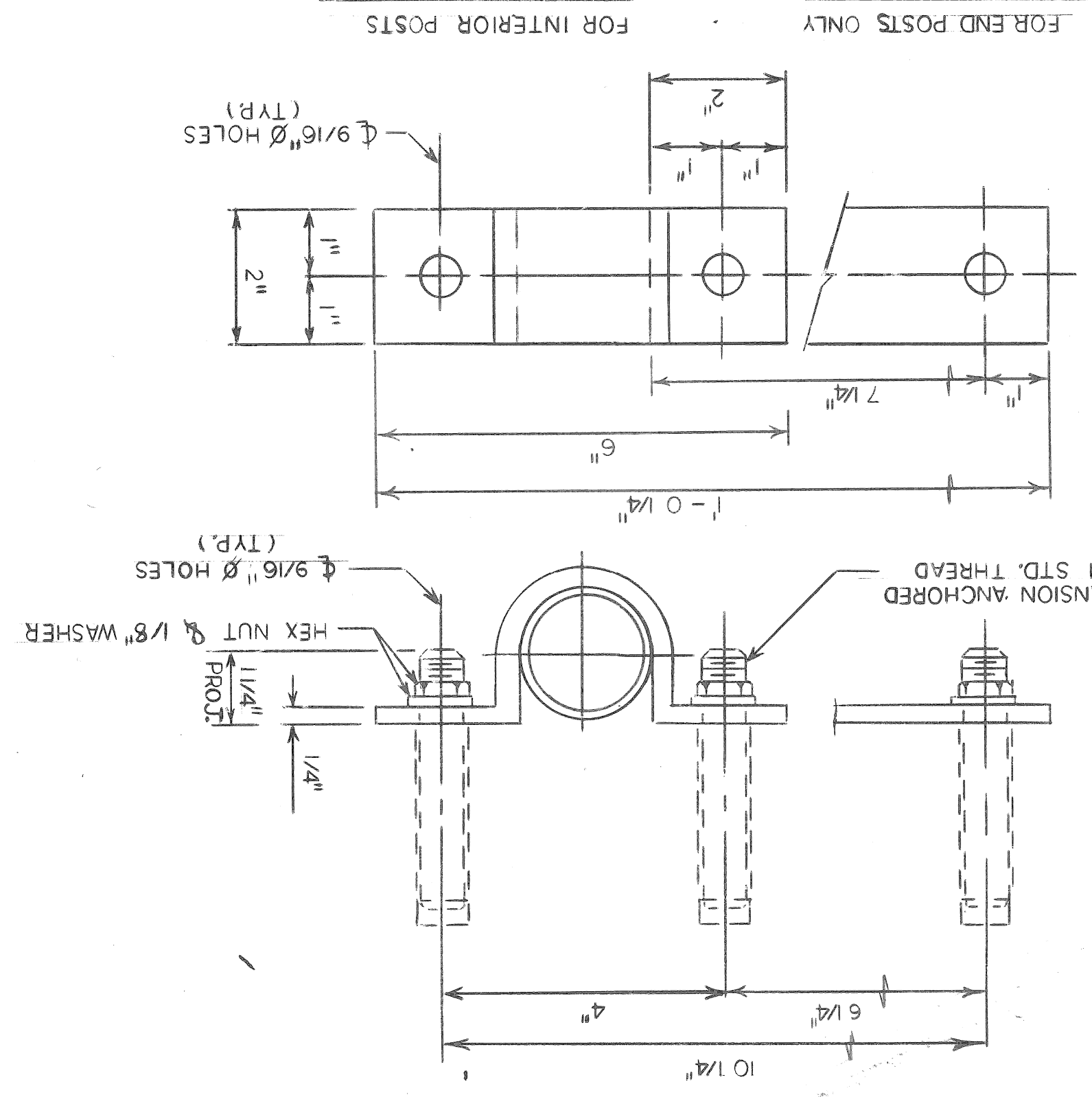


SECTION A-A

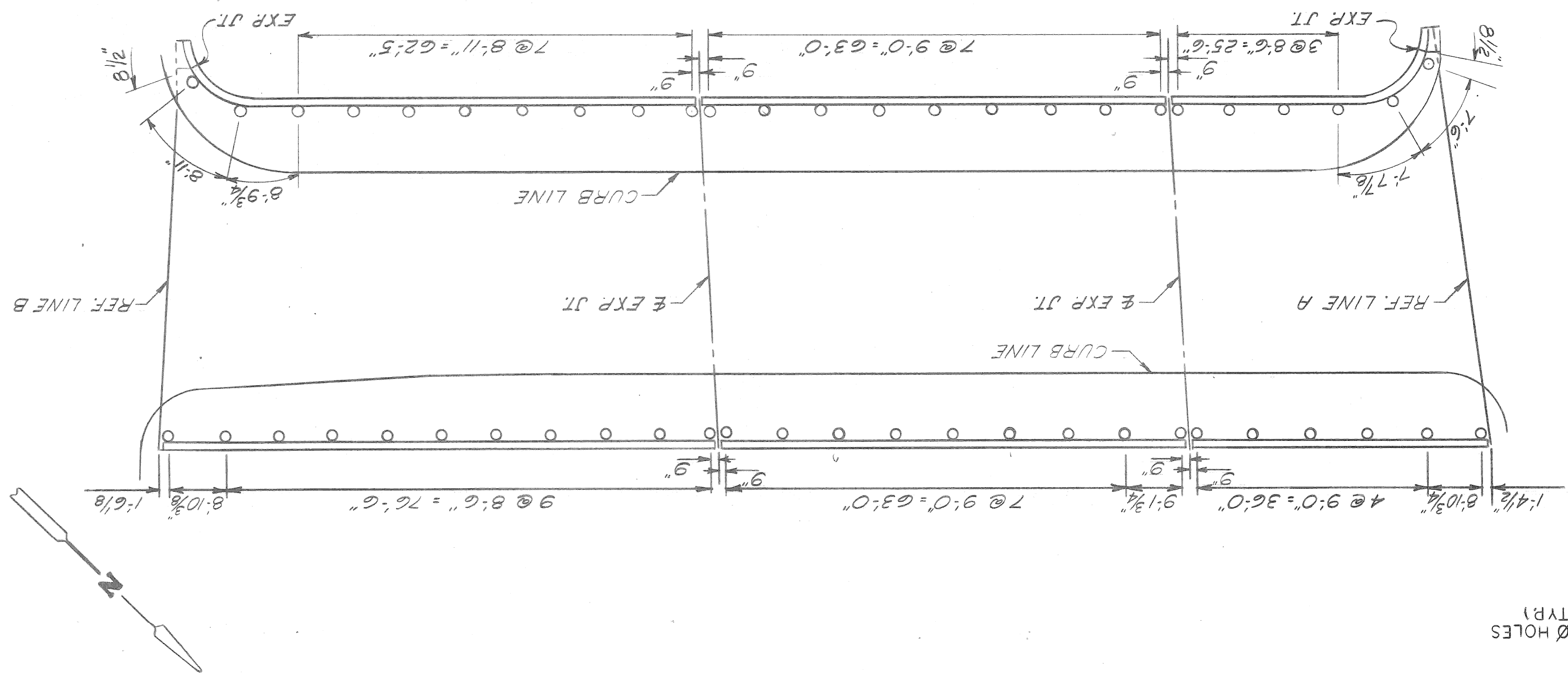
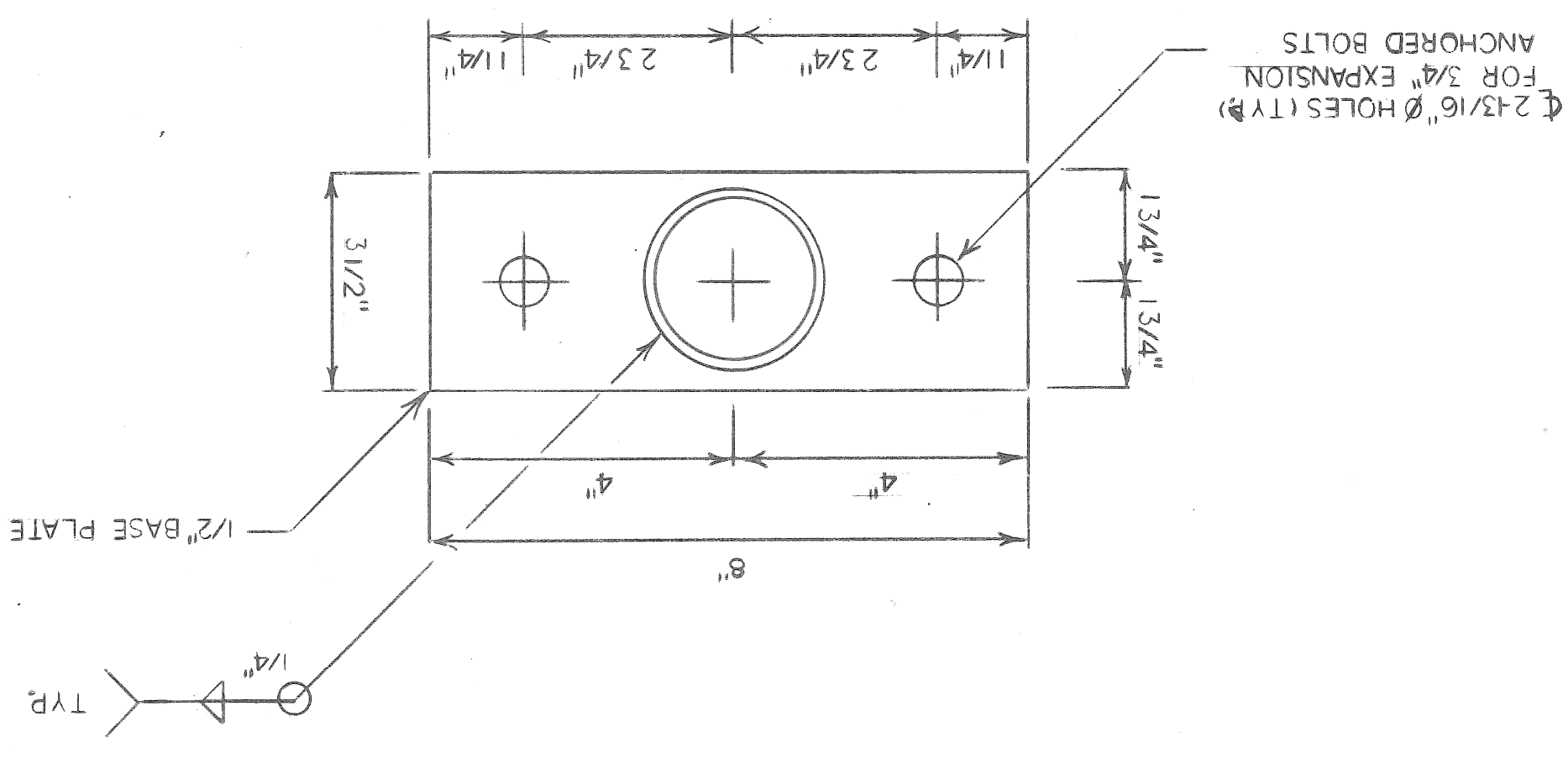


EXTEND FABRIC ACROSS EXPANSION TENSION BARS, ADJUSTMENTS MAY BE MADE DUE TO TEMPERATURE AT THE DIRECTION OF THE ENGINEER

BRACKET DETAIL

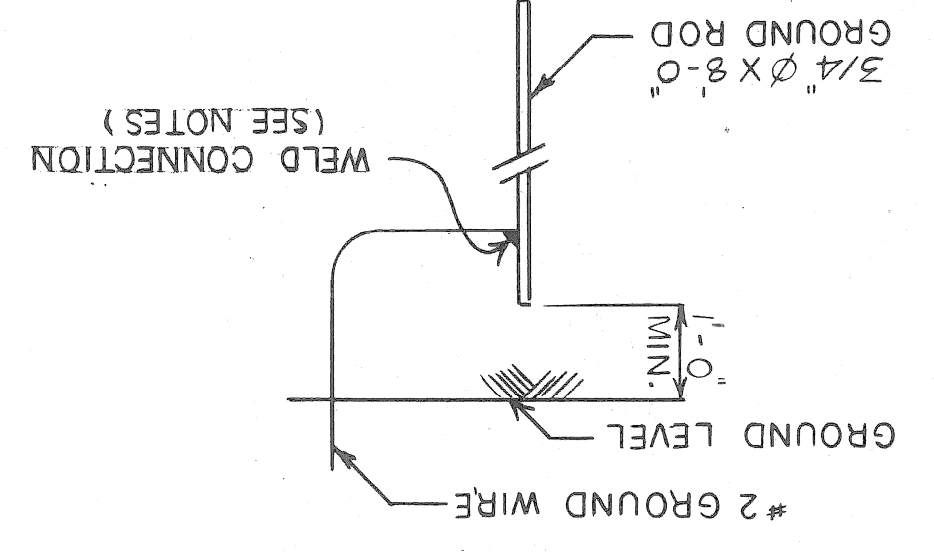


FENCE POST BASE DETAIL



ITEM	UNIT	AMOUNT
MISCELLANEOUS QUANTITIES		
PEDESTRIAN FENCING - STRUCTURES	S.F.T.	3922
ELECTRICAL GROUNDING SYSTEM	EACH	1

MAINTAIN ONE FOOT MINIMUM COVER OVER GROUND WIRE AND GROUND ROD. ALL UNDERGROUND CONNECTIONS SHALL BE MADE BY C/WELD, THERMITE, GAS OR ARC WELD. EXPOSED CONNECTIONS MAY BE SPLIT BOLT OR CLAMP TYPE. GROUND WIRE SHALL BE BARE #2 AWG AND SHALL CONFORM TO THE LATEST REVISION OF THE APPLICABLE CURRENT ASTM SPECIFICATION ASTM B33 FOR TINNED SOFT OR ANNEALED COPPER WIRE FOR ELECTRICAL PURPOSES. GROUND ROD SHALL BE STEEL, COPPER CLAD ROD 3/4 MIN. DIA. AND 8'-0" LONG.



GROUNDING NOTES AND DETAIL

FENCING NOTES

EXPANSION ANCHORED BOLTS OF THE SIZE INDICATED SHALL BE BETHLEHEM MINE ROOF EXPANSION TYPE WITH K-1 SHELL, PHILLIPS RED HEAD SELF DRILLING CONCRETE ANCHORS. CHICAGO EXPANSION BOLT CO.-SPECIAL SELF DRILLING ANCHOR OR APPROVED EQUAL. ALL WORK SHALL CONFORM TO THE M.D.O.T SPECIFICATIONS FOR HIGHWAY CONSTRUCTION. 1984 EDITION EXCEPT AS SHOWN OR NOTED ON THE PLAN.

THE POSTS SHALL BE ROUND POST HAVING AN OUTSIDE DIAMETER OF 2.875" AND WEIGHT OF 5.79 LBS. PER FT. GALVANIZED. NOMINAL 1/4" PIPE SHALL BE 1.58" OUTSIDE DIAMETER STEEL PIPE OR TUBING WEIGHING 2.27 LBS. PER FT. GALVANIZED.

ALL POSTS AND TUBING SHALL BE FURNISHED WITH MANUFACTURER'S STANDARD CONNECTIONS AND ITS MINIMUM WEIGHT SHALL BE WITHIN 5% OF THAT SPECIFIED. POSTS SHALL BE BENT IN THE SHOP AS SHOWN ON THE PLANS.

FABRIC FASTENERS SHALL BE DOUBLE TWISTED #9 GAGE GALVANIZED STEEL.

FABRIC OR CHAIN LINK FENCE SHALL BE FURNISHED WITH KNUCKLING AT BOTH SELWAGES.

TENSION BARS SHALL BE 3/4" X 1/4" GALVANIZED STEEL.

FENCE FABRIC SHALL BE GALVANIZED, #9 GAGE WITH A 1" MESH.

THE BID ITEM "PEDESTRIAN FENCING-STRUCTURES" SHALL INCLUDE THE FABRIC, POSTS, BRACKETS, ANCHORED BOLTS, PIPE, BRACKETS, BASE PLATES AND ALL SUITABLE CONNECTIONS AND FITTINGS.

THE CONTRACTOR WILL BE FURNISHED WITH PLANS OF THE EXISTING STRUCTURE IF REQUESTED. HE SHALL ALSO VERIFY FIELD CONDITIONS BEFORE FABRICATION.

THE PAY LIMITS FOR "PEDESTRIAN FENCING-STRUCTURES" IS MEASURED FROM THE TOP OF SIDEWALK TO TOP RAIL OF FENCE.

CARE SHALL BE TAKEN SO THAT DEBRIS DOES NOT FALL FROM STRUCTURE. WHERE SIGNS MOUNTED ON BRIDGE FASCIA'S INTERFERE WITH CONSTRUCTION, THEY SHALL BE REMOVED AND RESET AT THE CONTRACTORS EXPENSE.

CARE IS TO BE TAKEN IN PLACING ANCHORED BOLTS AND BRACKETS SO AS TO INSURE THAT THE BRACKETS HOLD THE POSTS FIRMLY AGAINST CONCRETE; SHIM IF NECESSARY.

2 X 2 1/4" H POST WEIGHING 4.1 LBS PER FT. GALVANIZED MAY BE USED AS AN OPTION FOR THE ROUND POST.

CITY OF DETROIT city engineering department

FOR MICHIGAN DEPARTMENT OF TRANSPORTATION

BRIDGE PROTECTIVE SCREENING DETAILS BRUSH ST. CROSSING FISHER FWY (1-75) IN DETROIT

S27 OF 82195

date 10-1-87

sheet 2 of 3

contract no. a.o.87-22-21

NO.	DATE	BY	REVISIONS

MICHIGAN STATE HIGHWAY DEPARTMENT
BRUSH ST. CROSSING
THE FISHER FREEWAY IN DETROIT

APPROVED: [Signature]
 DESIGN SUPERVISING ENGINEER

APPROVED: [Signature]
 ENGINEER OF DESIGN - CONSULTANTS

GENERAL PLAN OF STRUCTURE

NO. [] DESCRIPTION [] DATE []

REVISIONS

APPROVED: [Signature]
 STRUCTURAL ENGINEER

JOB NO. []

PLANS PREPARED BY []

CITY OF DETROIT
 DEPARTMENT OF PUBLIC WORKS
 CITY ENGINEERS OFFICE
 BUREAU OF HIGHWAYS AND EXPRESSWAYS

Change No. of R.L.C. Conduits 21-44 A, B

DATE []

NO. []

APPROVED: [Signature]
 ENGINEER OF DESIGN - CONSULTANTS

S27 of 82195D

CITY OF DETROIT
 ROAD NO. 1-05
 NORTH 1-05
 CHECKED BY []
 DRAWN BY []

CONTROL SECTION 82195 D

GENERAL NOTES

The design of this structure is based on the M.S.H.D. Standard Specifications for the Design of Highway Bridges, 1958 Edition (HS-20 loading).
 Live load plus impact deflection = 1/1000 of span length and = 1/350 of cantilever arm.
 The top of the roadway slab and the tops of the curbs are parallel to the vertical curve and its tangents.
 Steel sheet piling shall be at the continuous interior type, either new or used in good condition. Interlock type, either new or used in good condition, weighing not less than 22 pounds per square foot of web and not be furnished with suitable connecting and corner pieces.
 Lead analysis and mill reports are not required for steel used in sheet piling.

MISCELLANEOUS QUANTITIES

ITEM	UNIT	AMT.
Temporary Steel Sheet Piling	Sq. Ft.	1445
Temporary Sheeting & Bracing	L.S. Lump Sum	

NOTE: The line of temporary sheeting and bracing is shown as positioned by the engineer. The contractor may alter the line, at his option and the approval of the engineer. To facilitate construction, no additional cost, however, will be allowed for sheet piling or bracing.

NOTE: The contractor shall take adequate precautions not to undercut adjacent pavement during construction of this section of wall, (incld) section of wall, (incld) Temp. Steel Sheet Piling Temp. Sheeting & Bracing

