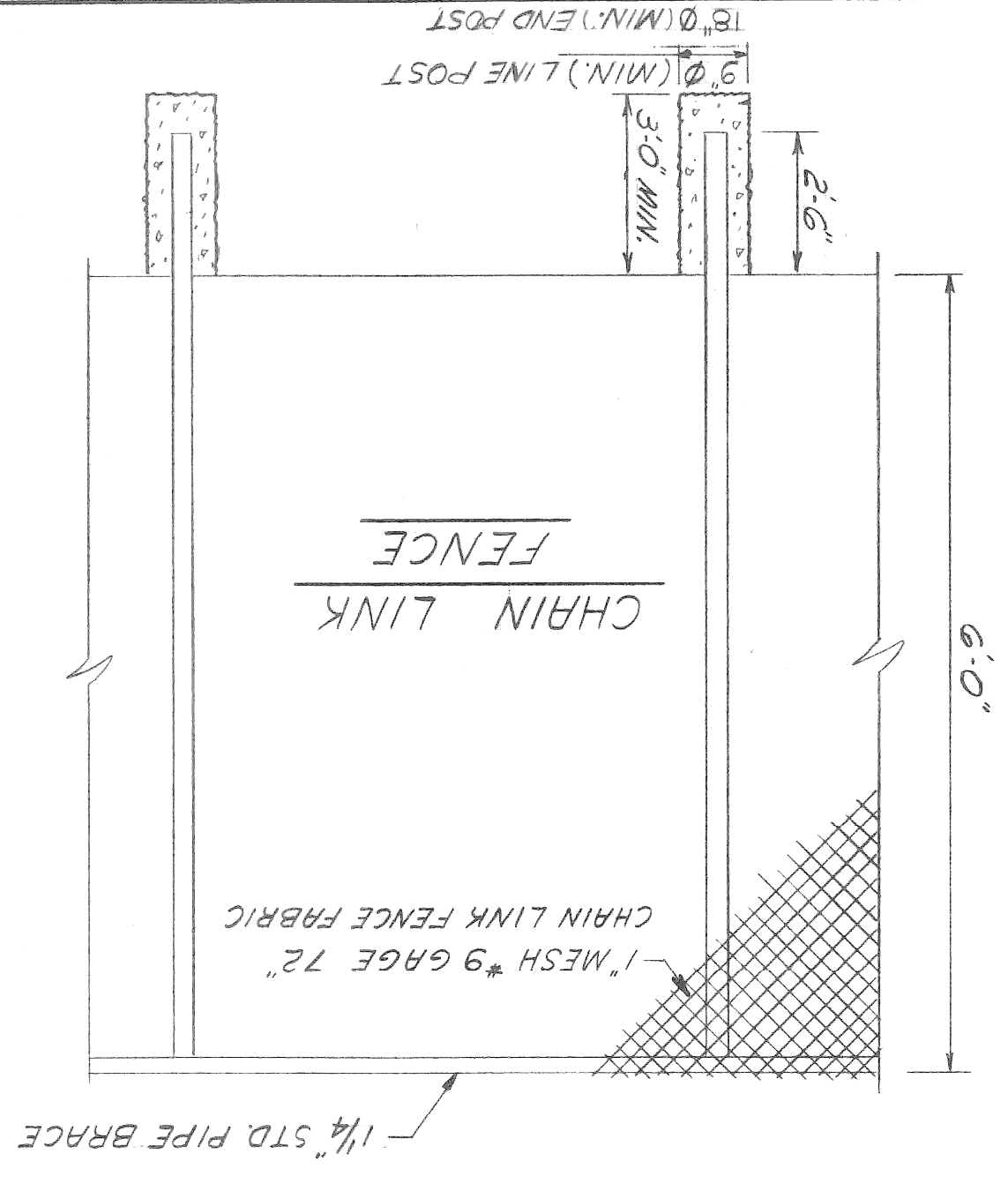
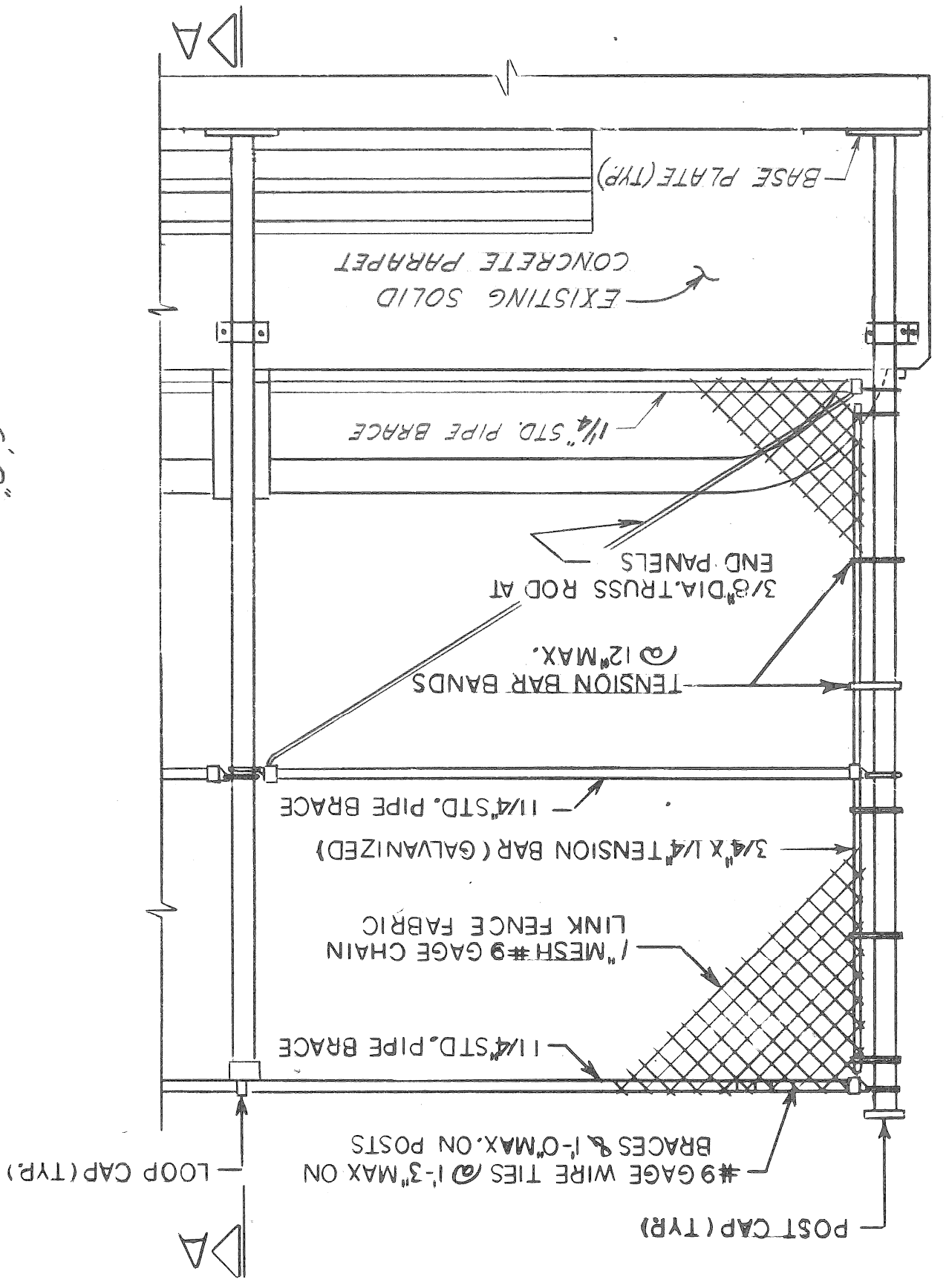
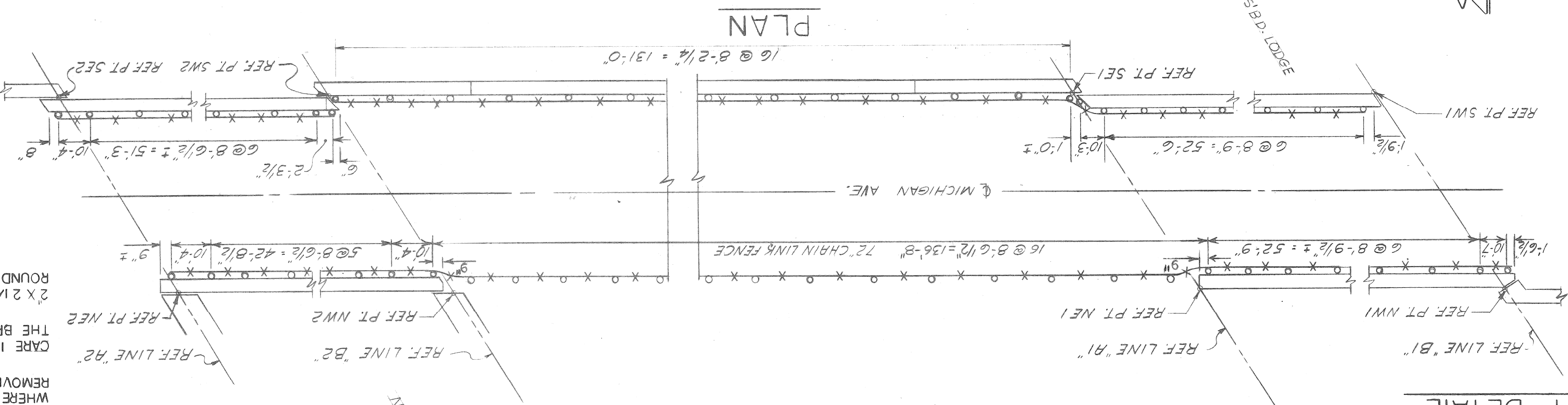
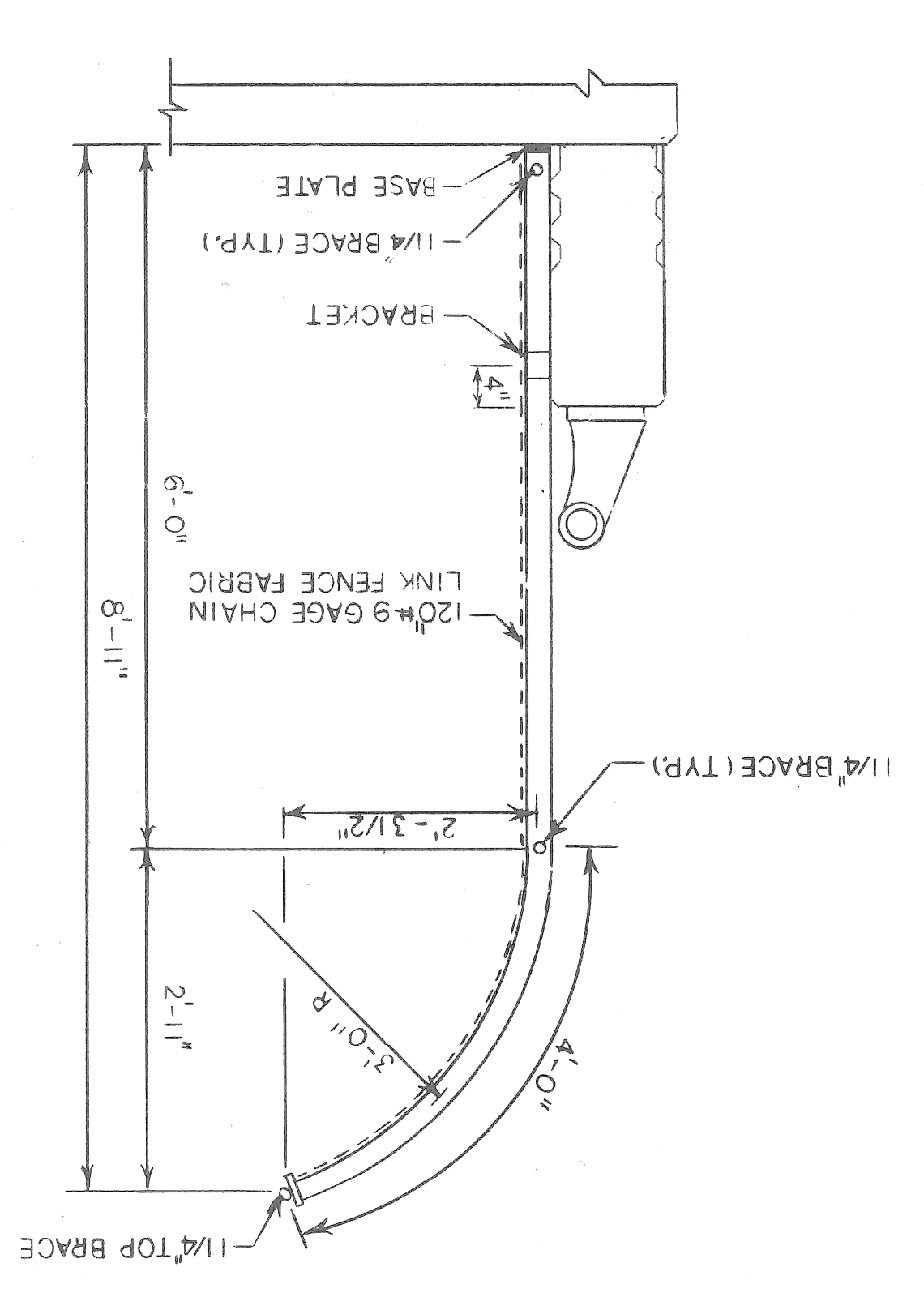


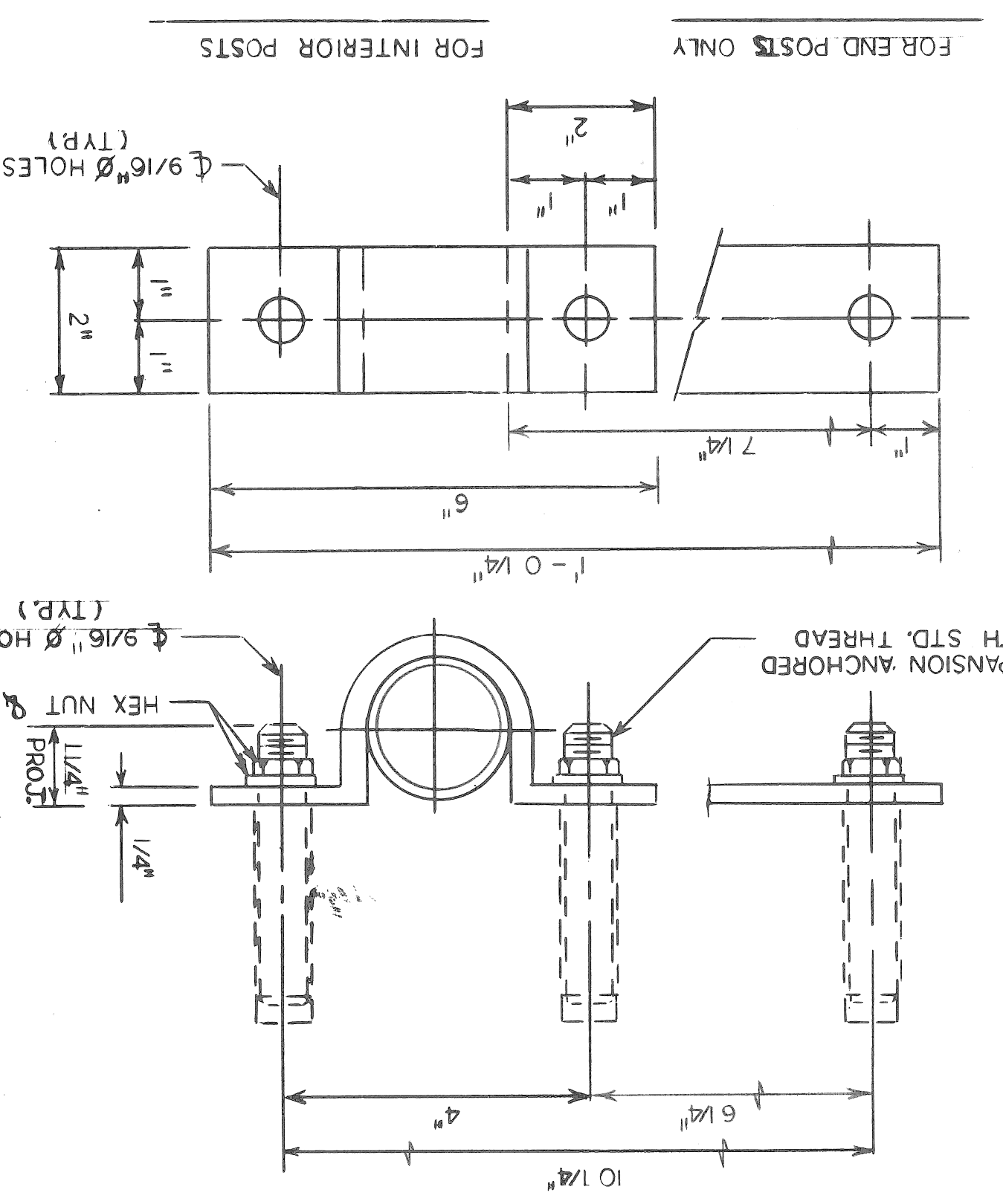
TYPICAL ELEVATION



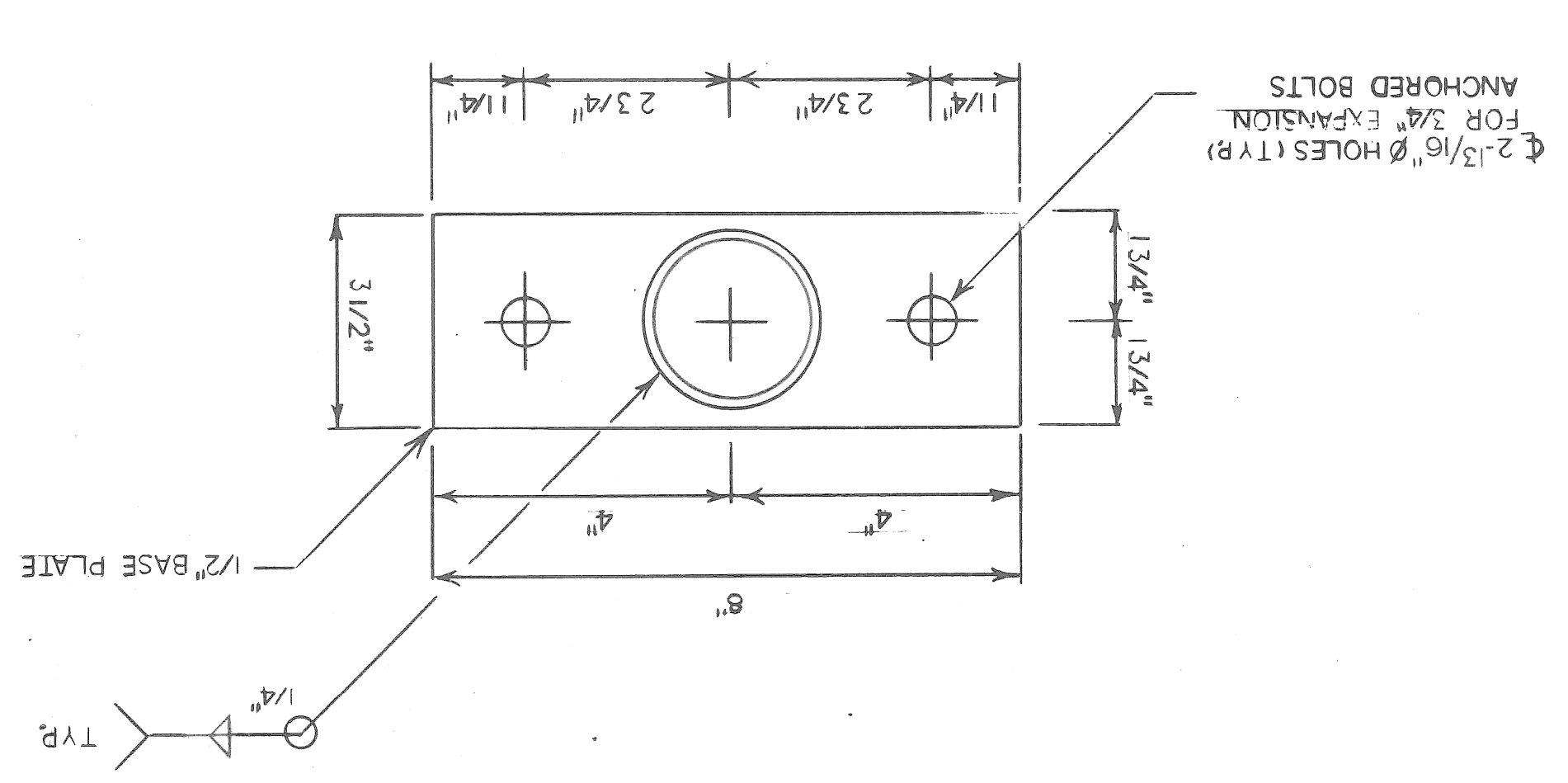
SECTION A-A



BRACKET DETAIL



FENCE POST BASE DETAIL



FENCING NOTES

EXPANSION ANCHORED BOLTS OF THE SIZE INDICATED SHALL BE BETHELMHEIM MINE ROOF EXPANSION TYPE WITH K-1 SHELL, PHILLIPS HEAD SELF DRILLING CONCRETE ANCHORS, CHICAGO EXPANSION BOLT CO.-SPECIAL SELF DRILLING ANCHOR OR APPROVED EQUAL. ALL WORK SHALL CONFORM TO THE M.D.O.T SPECIFICATIONS FOR HIGHWAY CONSTRUCTION. 1984 EDITION EXCEPT AS SHOWN OR NOTED ON THE PLAN.

THE POSTS SHALL BE ROUND POST HAVING AN OUTSIDE DIAMETER OF 2.875 AND WEIGHT OF 5.79 LBS. PER FT. GALVANIZED. NOMINAL 1 1/4" Ø PIPE SHALL BE 1.98" OUTSIDE DIAMETER STEEL PIPE OR TUBING WEIGHING 2.27 LBS. PER FT. GALVANIZED.

ALL POSTS AND TUBING SHALL BE FURNISHED WITH MANUFACTURERS STANDARD CONNECTIONS AND ITS MINIMUM WEIGHT SHALL BE WITHIN 5% OF THAT SPECIFIED. POSTS SHALL BE BENT IN THE SHOP AS SHOWN ON THE PLANS.

ALL COMPONENTS ARE TO BE GALVANIZED IN ACCORDANCE WITH ASTM A-153 AFTER FABRICATION.

FABRIC FASTENERS SHALL BE DOUBLE TWISTED 9 GAUGE GALVANIZED STEEL.

ALL FABRIC OR CHAIN LINK FENCE SHALL BE FURNISHED WITH KNUCKLING AT BOTH SELVAGES.

TENSION BARS SHALL BE 3/4" X 1/4" GALVANIZED STEEL.

FENCE FABRIC SHALL BE GALVANIZED, # 9 GAUGE WITH A 1" MESH.

THE BID ITEM "PEDESTRIAN FENCING - STRUCTURES" SHALL INCLUDE THE FABRIC, POSTS, BRACES, ANCHORED BOLTS, PIPE, BRACKETS, BASE PLATES AND ALL SUITABLE CONNECTIONS AND FITTINGS.

THE CONTRACTOR WILL BE FURNISHED WITH PLANS OF THE EXISTING STRUCTURE IF REQUESTED. HE SHALL ALSO VERIFY FIELD CONDITIONS BEFORE FABRICATION.

THE PAY LIMITS FOR "PEDESTRIAN FENCING - STRUCTURES" IS MEASURED FROM THE TOP OF SIDEWALK TO TOP RAIL OF FENCE.

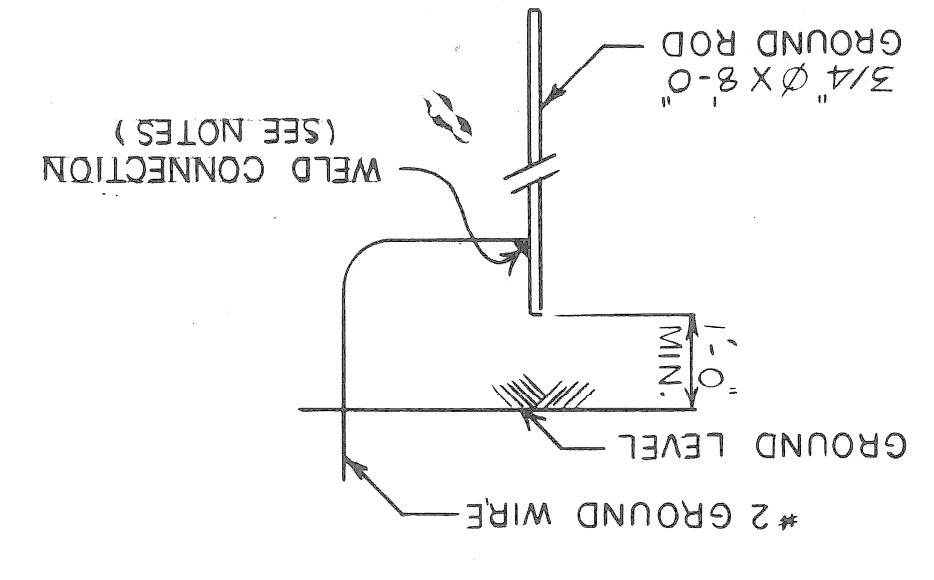
CARE SHALL BE TAKEN SO THAT DEBRIS DOES NOT FALL FROM STRUCTURE.

WHERE SIGNS MOUNTED ON BRIDGE FASCIA INTERFERE WITH CONSTRUCTION, THEY SHALL BE REMOVED AND RESET AT THE CONTRACTORS EXPENSE.

CARE IS TO BE TAKEN IN PLACING ANCHORED BOLTS AND BRACKETS SO AS TO INSURE THAT THE BRACKETS HOLD THE POSTS FIRMLY AGAINST CONCRETE; SHIM IF NECESSARY.

2 X 2 1/4" H POST WEIGHING 4.1 LBS PER FT. GALVANIZED MAY BE USED AS AN OPTION FOR THE ROUND POST.

GROUNDING NOTES AND DETAIL



MAINTAIN ONE FOOT MINIMUM COVER OVER GROUND WIRE AND GROUND ROD.

ALL UNDERGROUND CONNECTIONS SHALL BE MADE BY CADWELD, THERMITE GAS OR ARC WELD. EXPOSED CONNECTIONS MAY BE SPLIT BOLT OR CLAMP TYPE.

GROUND WIRE SHALL BE BARE #2 AWG AND SHALL CONFORM TO THE LATEST REVISION OF THE APPLICABLE CURRENT SPECIFICATION ASTM B 33 FOR TINNED SOFT OR ANNEALED COPPER WIRE FOR ELECTRICAL PURPOSES.

GROUND ROD SHALL BE STEEL, COPPER CLAD ROD 3/4 MIN. DIA. AND 8'-0" LONG.

MISCELLANEOUS QUANTITIES

ITEM	UNIT	AMOUNT
PEDESTRIAN FENCING - STRUCTURES	S.F.T.	3857
ELECTRICAL GROUNDING SYSTEM	EACH	1
72" CHAIN LINK FENCE	L.F.T.	137



ENGINEER OF BRIDGES AND STRUCTURES		APPROVED
CORRECT		APPROVED
TRADED BY	CHECKED BY	DATE
J.H.C.	J.H.C.	5-22-72
DATE	CHECKED BY	DATE
7-24-91	J.H.C.	7-24-91

1044 7-22-92 5/23/92 J.H.C.

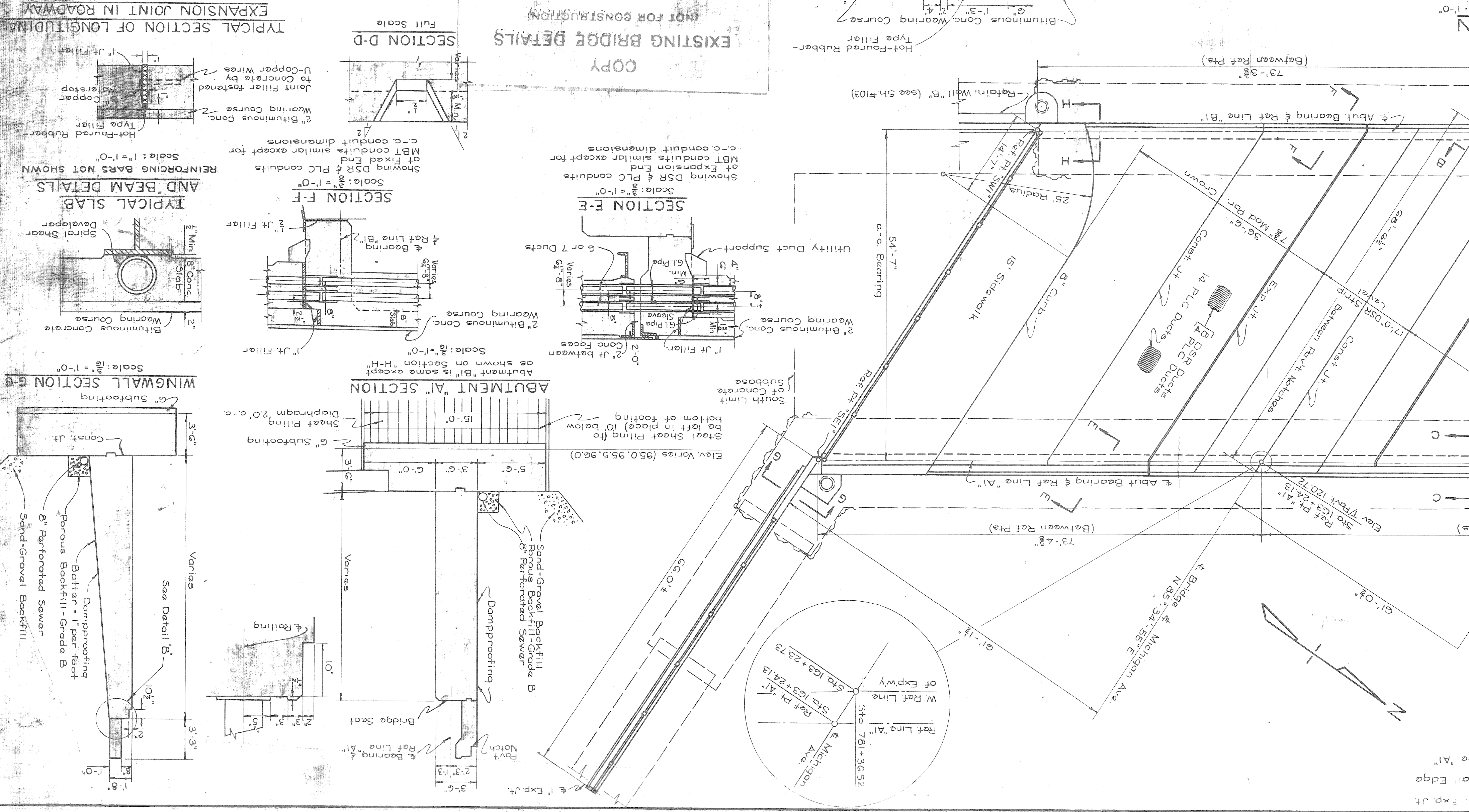
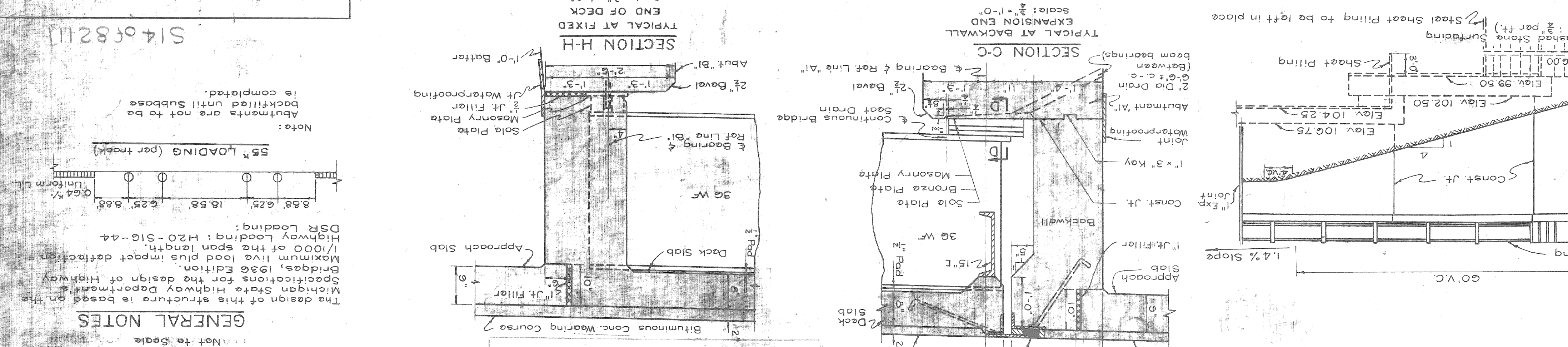
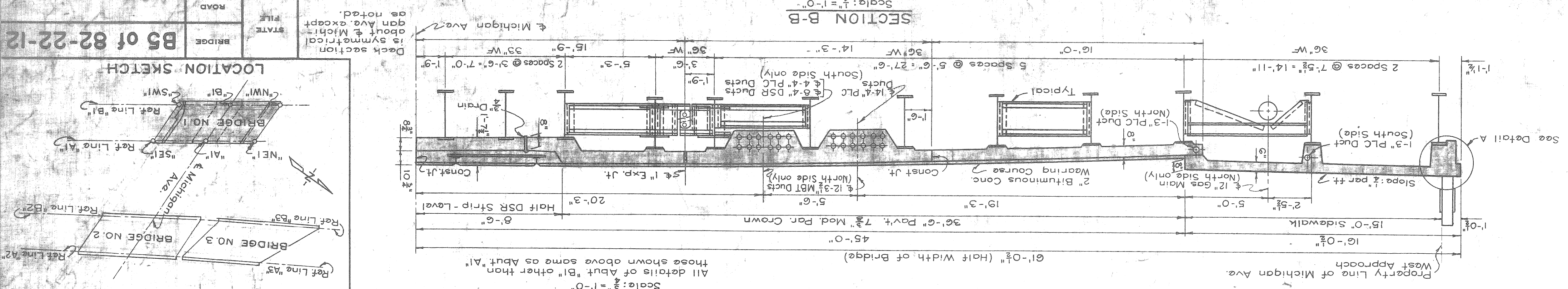
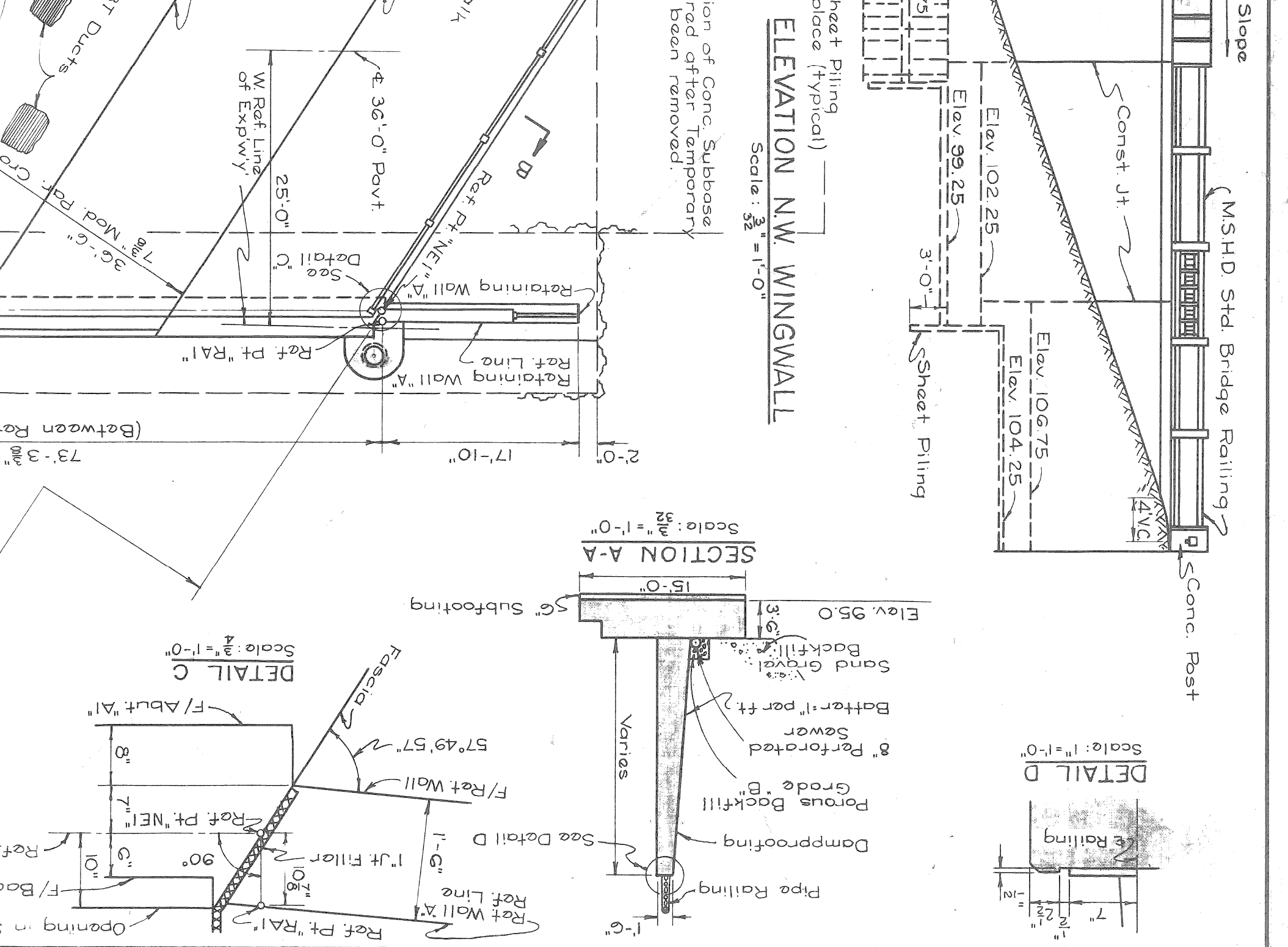
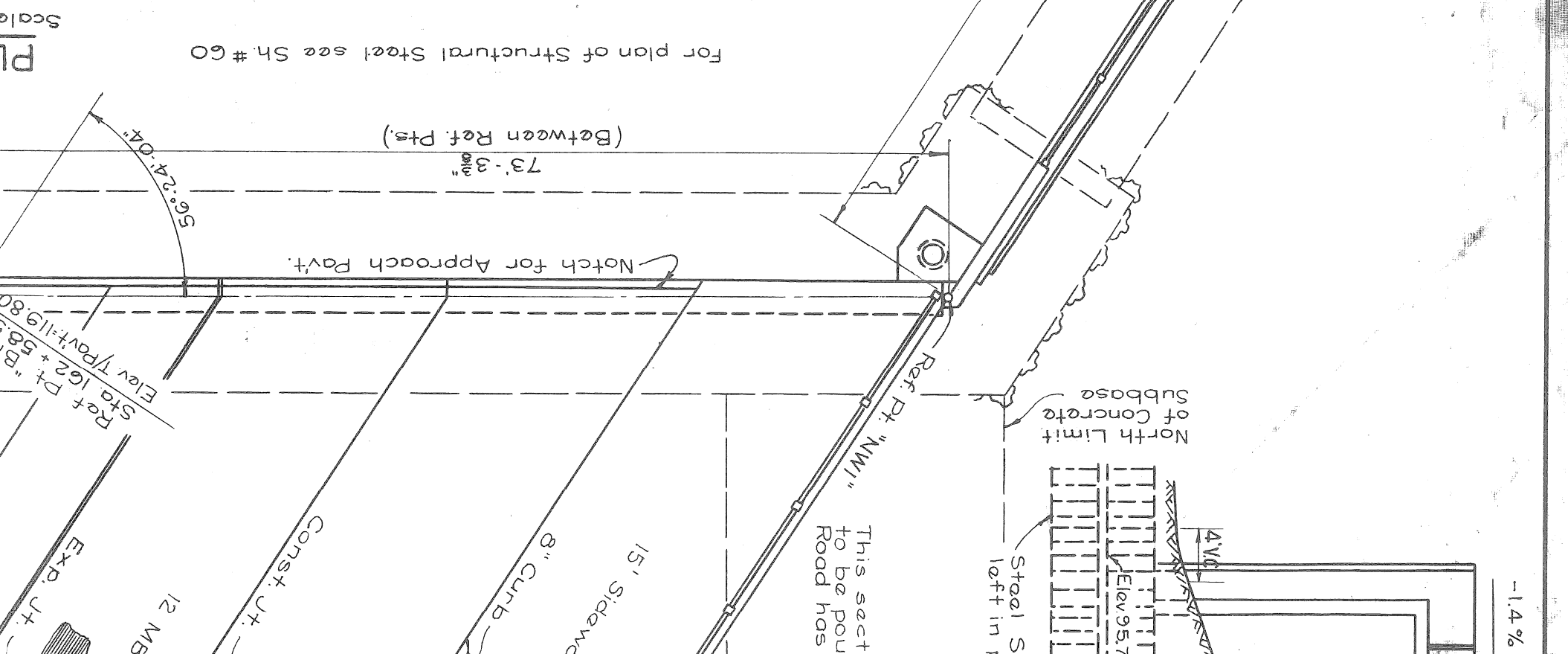
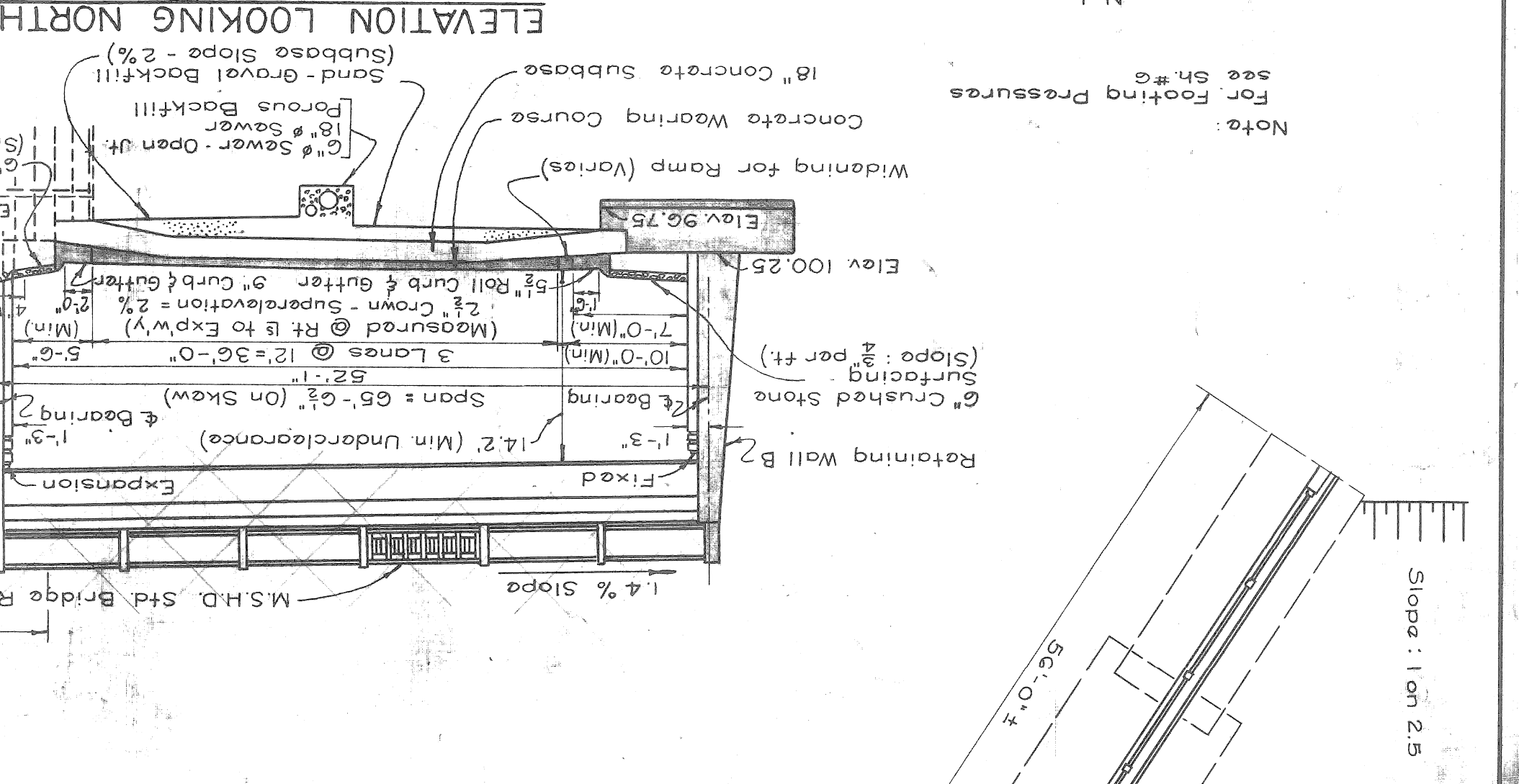
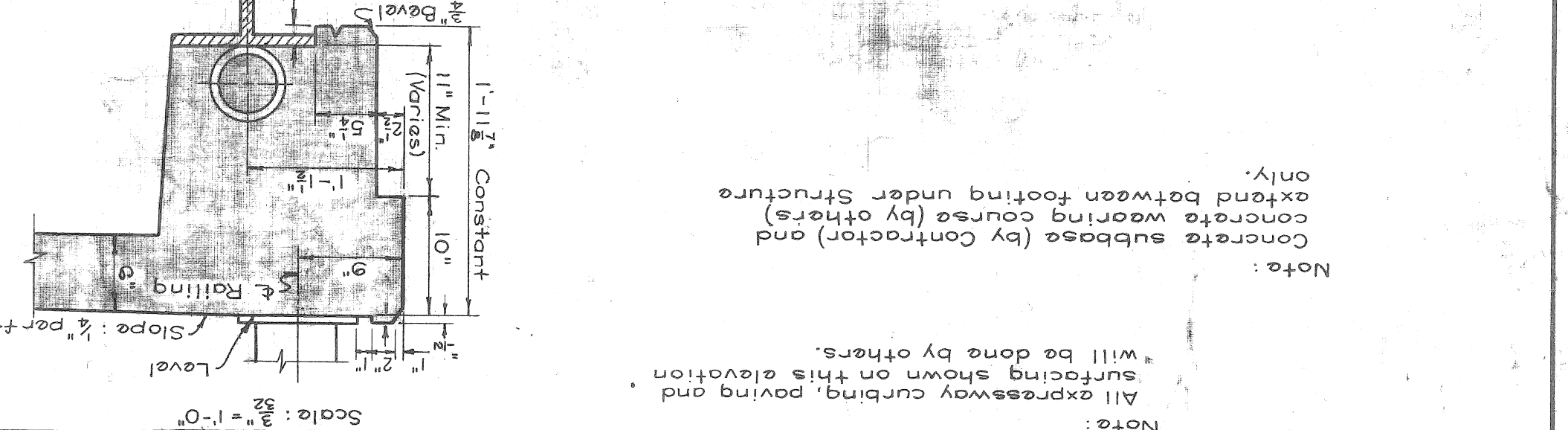
# WAYNE COUNTY ROAD COMMISSIONERS

## BOARD OF

### DETROIT, MICHIGAN

**JOHN C. LODGE EXPRESSWAY**  
**MICHIGAN AVE. CROSSING**  
**BRIDGE NO. 1**  
**GENERAL PLAN OF STRUCTURE**

STATE PROJECT 82-127 82-10AB-48  
 COUNTY SHEET NO. 3 OF 4  
 ISSUE NO. 7



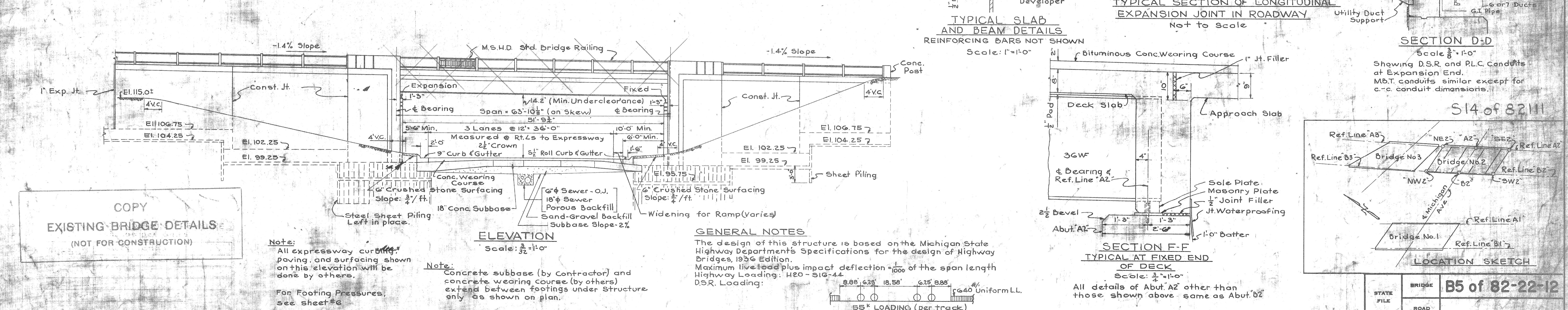
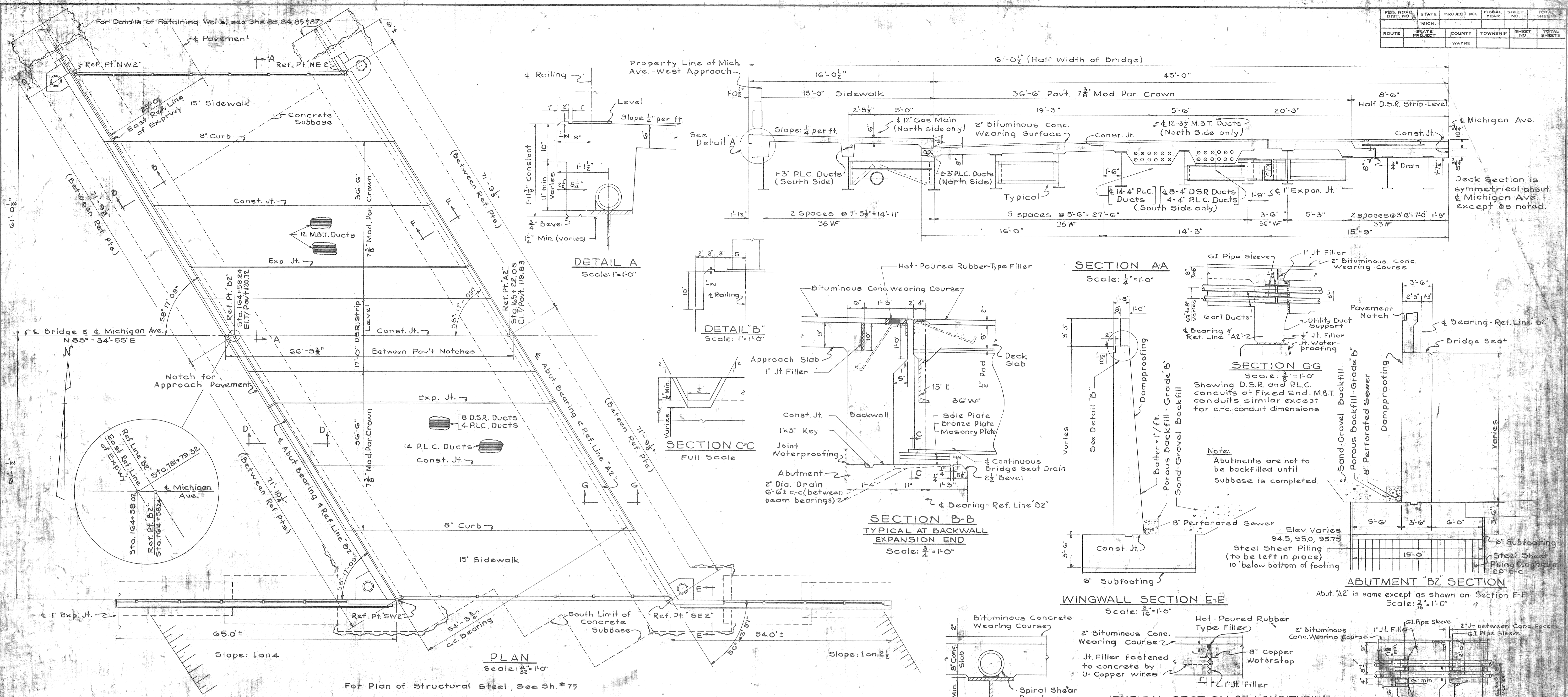
**GENERAL NOTES**

The design of this structure is based on the Michigan State Highway Department's Specifications for the design of Highway Bridges, 1936 Edition. Highway Loading: H20-S16-44 DSR Loading: Highway Loading: H20-S16-44

Note: Abutments are not to be backfilled until Subbase is completed.



FED. ROAD DIST. NO.	STATE	PROJECT NO.	FISCAL YEAR	SHEET NO.	TOTAL SHEETS
	MICH.				
ROUTE	STATE PROJECT	COUNTY	TOWNSHIP	SHEET NO.	TOTAL SHEETS
		WAYNE			



**COPY**  
**EXISTING BRIDGE DETAILS**  
(NOT FOR CONSTRUCTION)

**Note:**  
All expressway curbs, paving, and surfacing shown on this elevation will be done by others.  
For Footing Pressures, see sheet #6.

**Note:**  
Concrete subbase (by Contractor) and concrete wearing course (by others) extend between footings under structure only as shown on plan.

**GENERAL NOTES**  
The design of this structure is based on the Michigan State Highway Department's Specifications for the design of Highway Bridges, 1936 Edition.  
Maximum live load plus impact deflection = 1/1000 of the span length Highway Loading: H20-S16-44.  
D.S.R. Loading:  
55k LOADING (per track)

**DETAIL A**  
Scale: 1"=1'-0"

**DETAIL B**  
Scale: 1"=1'-0"

**SECTION CC**  
Full Scale

**SECTION B-B**  
TYPICAL AT BACKWALL EXPANSION END  
Scale: 3/4"=1'-0"

**SECTION AA**  
Scale: 1/4"=1'-0"

**SECTION GG**  
Scale: 3/8"=1'-0"

**WINGWALL SECTION E-E**  
Scale: 1/8"=1'-0"

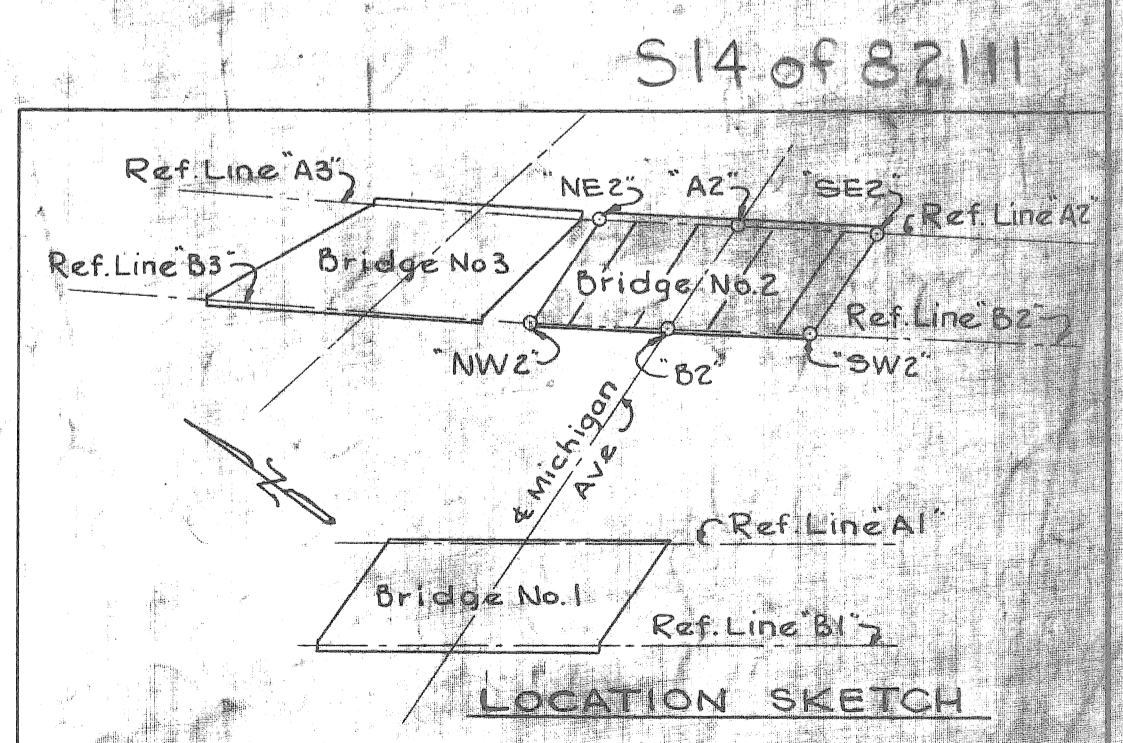
**ABUTMENT B2 SECTION**  
Abut. A2 is same except as shown on Section F-F  
Scale: 3/8"=1'-0"

**TYPICAL SLAB AND BEAM DETAILS**  
REINFORCING BARS NOT SHOWN  
Scale: 1"=1'-0"

**TYPICAL SECTION OF LONGITUDINAL EXPANSION JOINT IN ROADWAY**  
Not to Scale

**SECTION D-D**  
Scale: 3/8"=1'-0"

**SECTION F-F**  
TYPICAL AT FIXED END OF DECK  
Scale: 1/4"=1'-0"



REVISIONS	DRAWN BY	CHECKED BY	DATE	APPROVED
	J.M.R.	J.A.C.	6-12-51	[Signature]
			5-14-52	[Signature]

**WAYNE COUNTY ROAD COMMISSIONERS**  
DETROIT, MICHIGAN

**JOHN C. LODGE EXPRESSWAY**  
**MICHIGAN AVENUE CROSSING**  
**BRIDGE NO. 2**  
**GENERAL PLAN OF STRUCTURE**

STATE PROJECT	82-127	COUNTY SHEET NO.	68-108A-48
ISSUE NO.	1	SHEET NO.	4 OF 4
DATE	2-23-52		



**MISCELLANEOUS QUANTITIES**

ITEM	UNIT	BRIDGE#1	BRIDGE#2	BRIDGE#3	TOTAL
SCAFFOLDING	SYD	690	560	555	1805
HAND CHIPPING-SHALLOW	SYD	75	75	75	225
HAND CHIPPING-DEEP	SYD	50	50	50	150
PATCHING MORTAR OR CONCRETE	CU YD	20	125	5	150
CONSTRUCTING BRIDGE DECK SURFACE	SYD	690	560	555	1805
LATEX-MODIFIED SURFACING MIXTURE	CU YD	78	71	67	222
REMOVING BITUMINOUS SURFACE	SYD	690	560	555	1805
PREFORMED NEOPRENE JOINT SEAL, 2"	LFT	131	134	-	265
EXPANSION JOINT DEVICE	LFT	197	181	154	482
3/4" EPOXY ANCHORED BARS	EACH	366	214	260	840
BRIDGE RAILING-SOLID PARAPET TYPE	LFT	283	170	206	659
REMOVAL OF PORTIONS OF STRUCTURE	LSUM	206	206	206	659
1 Tube Railing	LFT	283	170	206	659

THE ACTUAL QUANTITY OF LATEX-MODIFIED SURFACING MIXTURE PLACED ON DECK #1 WAS CUBIC YARDS, # MIXTURE PLACED ON DECK #2 WAS CUBIC YARDS, # MIXTURE PLACED ON DECK #3 WAS CUBIC YARDS, # WHEN SUBMITTING AS CONSTRUCTED PLANS.)

\* Includes Removal of Railing on Retaining Wall "B"

**EPOXY COATED STEEL REINFORCEMENT**

**BAR LEGEND**

E A BAR

EPOXY COATED

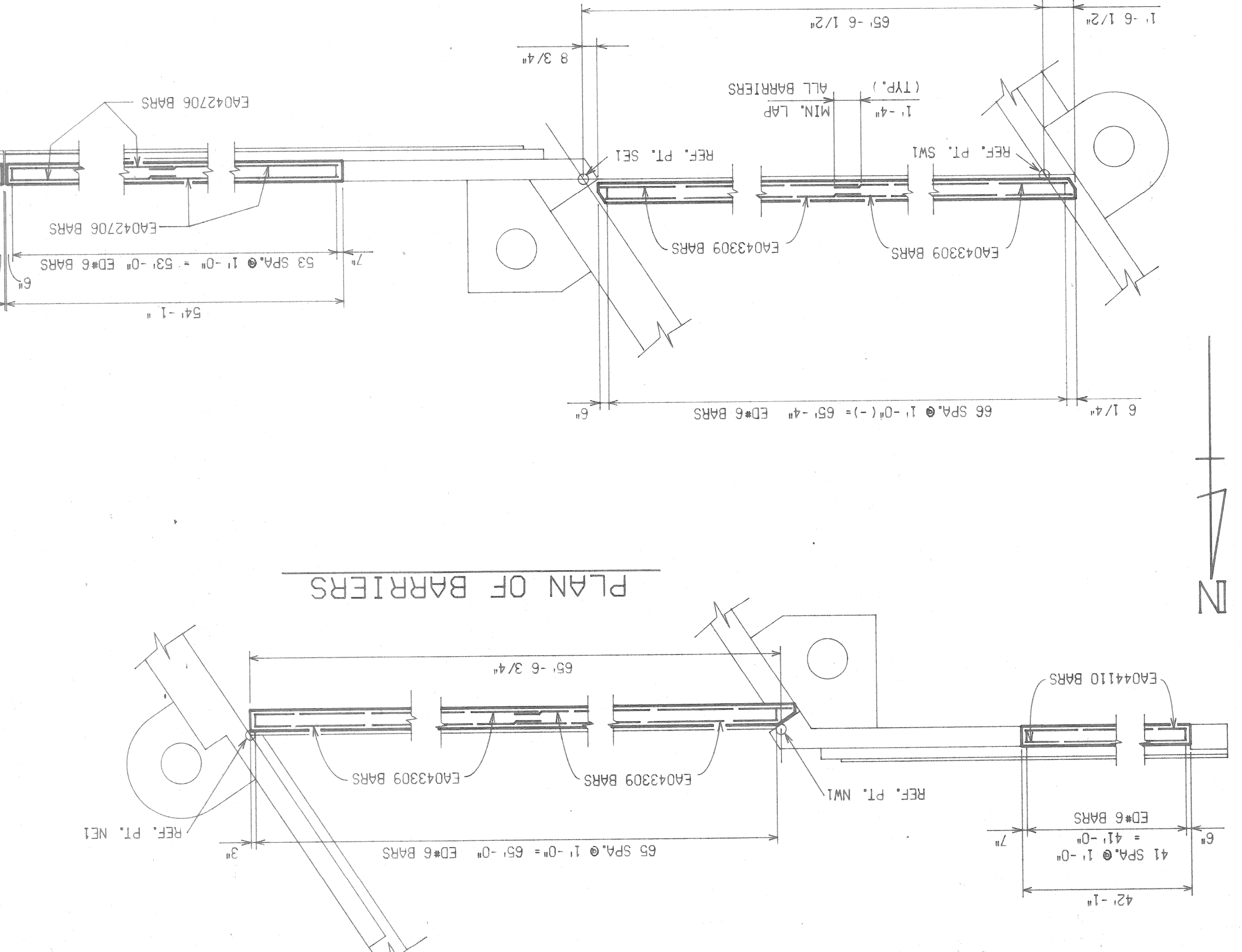
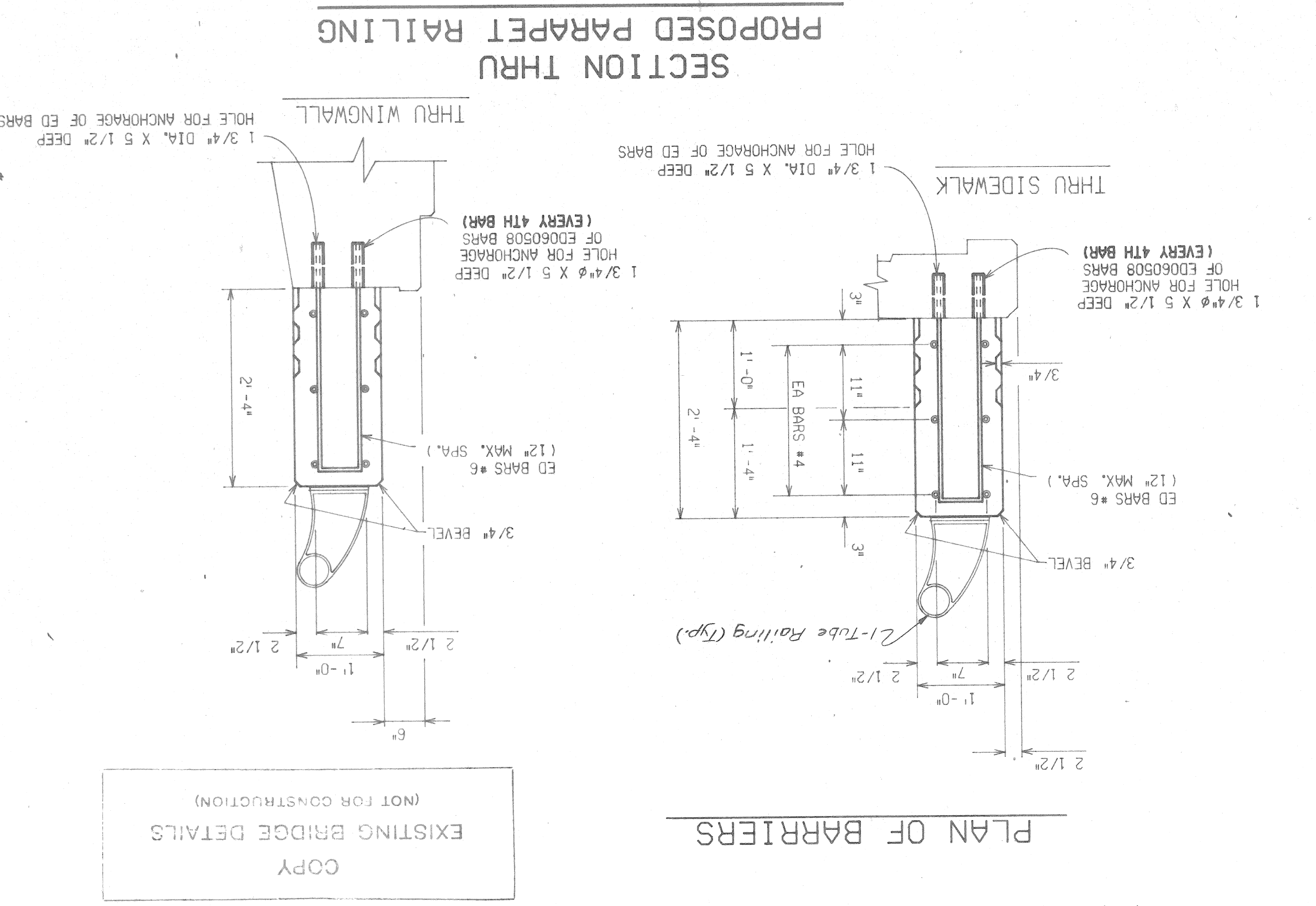
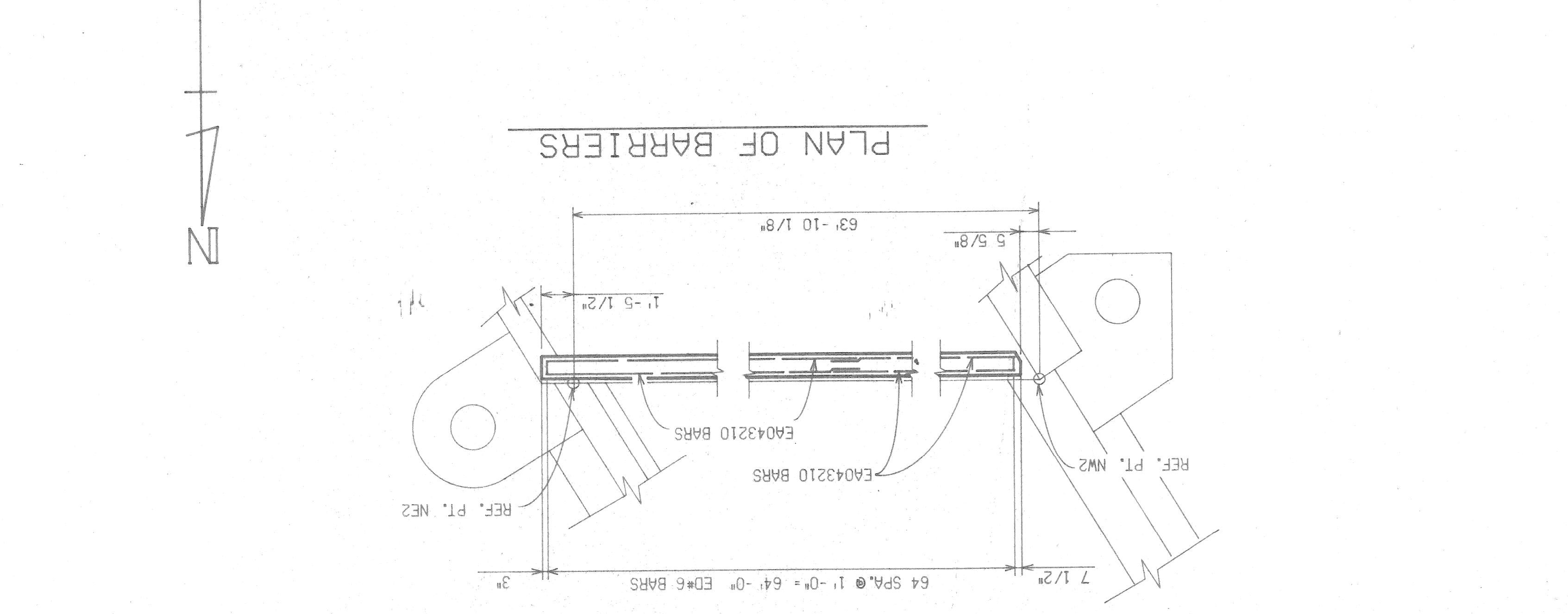
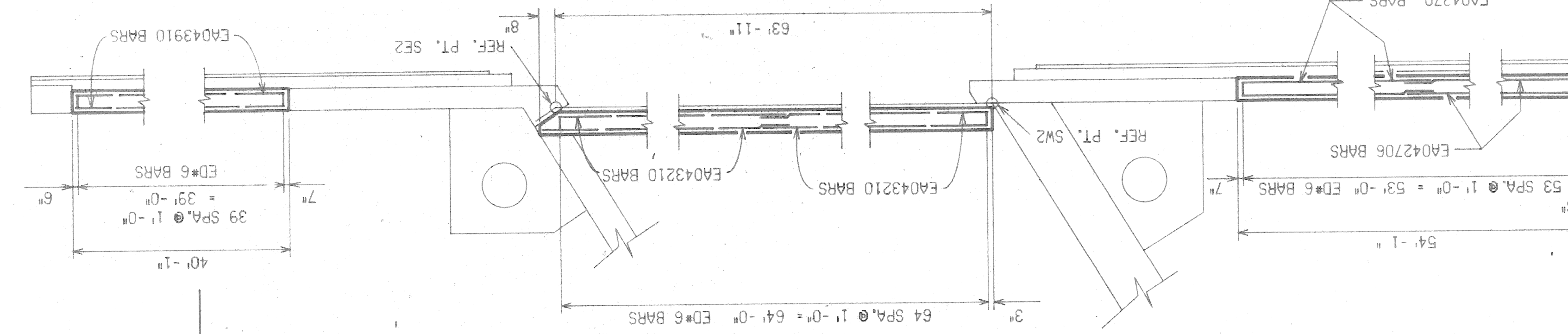
BAR SIZE

BAR LENGTH (FT.)

BAR LENGTH (IN.)

BAR SHAPE

EA064700	BAR SHAPE
EA043910	BAR SIZE
EA043210	BAR LENGTH (FT.)
EA043110	BAR LENGTH (IN.)



COPY  
EXISTING BRIDGE DETAILS  
(NOT FOR CONSTRUCTION)