



DATA CURVE # 36
 $\Delta = 87.2712$
 $D = 17.30$
 $T = 38.972$
 $L = 262.29$
 $E = 563.56$
 $W = 10.42$
 $S = 1145 + 0.371$
 $N = 1147 + 86.70$
 $E = 34182.63$
 $W = 1150 + 67.27$

5-C → 5-D

CITY OF DETROIT

MICHIGAN STATE HIGHWAY DEPARTMENT

C.S.R. 3-24-63 Temp Easements for Rdwy Parcels 1801A-1810
 C.S.R. 2-22-65 Added Parc 1811-A to 1811-H, School Replace.
 Auth. Date Revision
 C.S.R. 1-26-68 Final R.O.W.

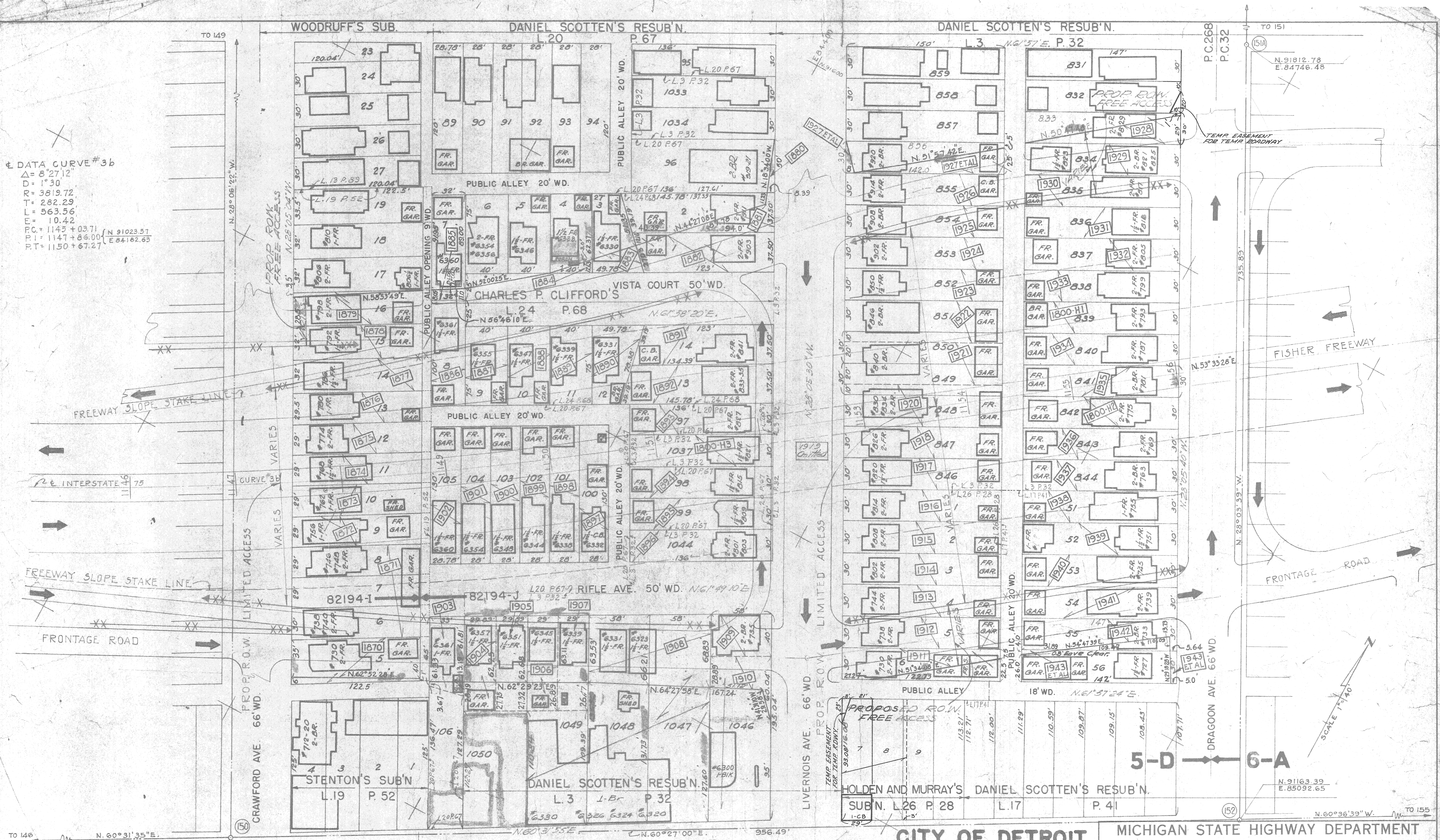
SQUAD LEADER *E.A.J.* DATE 10-63
 DRAWN BY *J.M. W.F.*
 CHECKED BY *A.M. J.S.*
 CORRECT

PLANS PREPARED BY THE BOARD OF
WAYNE COUNTY ROAD COMMISSIONERS
 PHILIP J. NEUDECK WILLIAM F. KREGER AL BARBOUR

I-75 FISHER FREEWAY
 R.O.W SECTION 5-D
 WATERMAN AVE TO CRAWFORD AVE
 ITEM 513 I-75-1(53)-49
 STA. 1137+ TO STA. 1147+
 ISSUE NO. 3-18-65 103463
 COUNTY JOB 1300 SHEET NO.
 STATE PROJECT 82194-1

R63

DATA CURVE #36
 $\Delta = 8^{\circ}27'12''$
 $D = 1^{\circ}30'$
 $R = 3819.72$
 $T = 282.29$
 $L = 563.56$
 $E = 10.42$
 $PC = 1145 + 03.71$
 $PI = 1147 + 86.00$
 $PT = 1150 + 67.27$

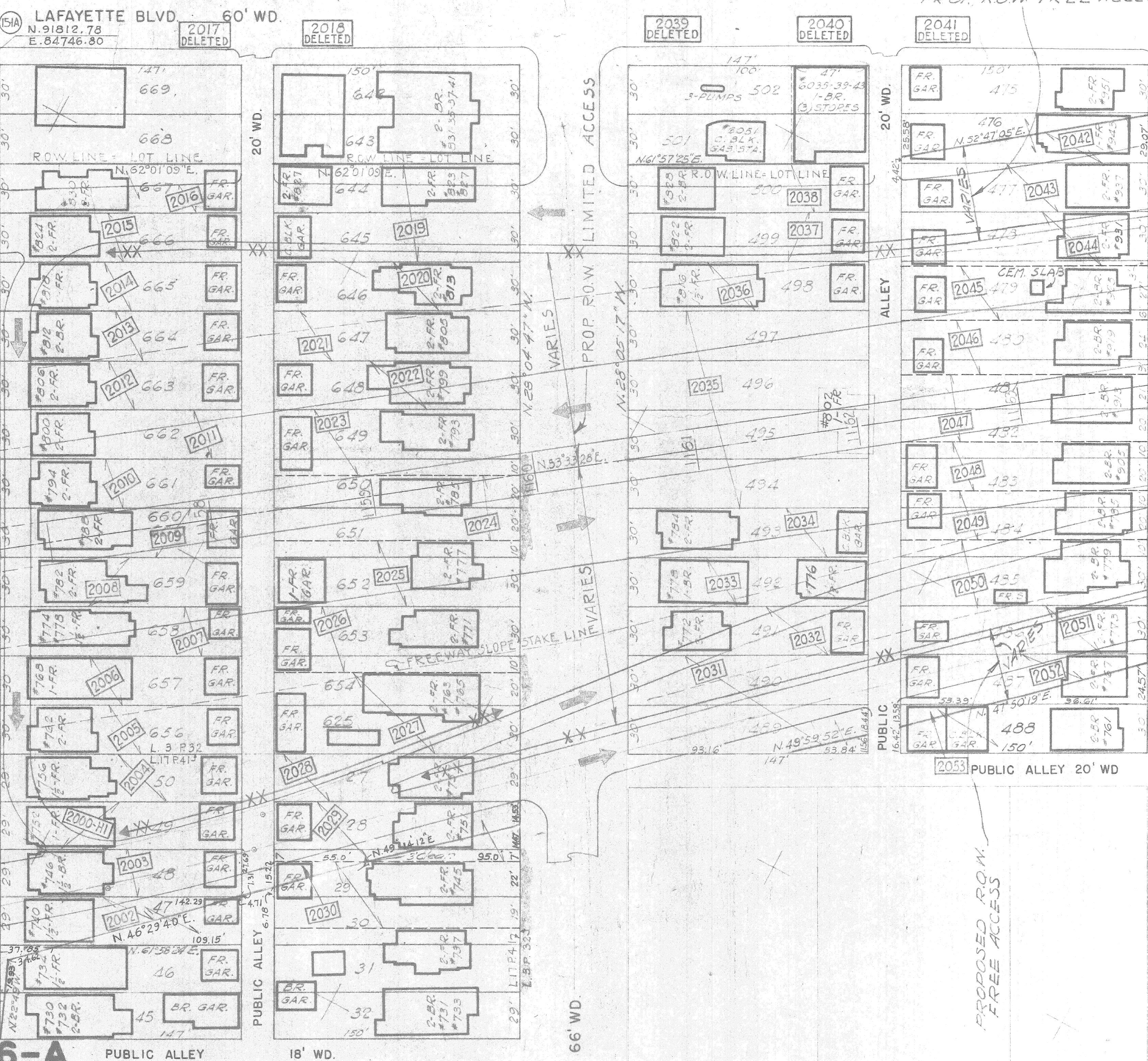


<p>TO 140 N. 60°31'35"E. 956.49'</p>		<p>TO 149 N. 28°06'22"W. 1147'</p>		<p>TO 151 N. 91°12.78 E. 84746.48</p>		<p>TO 155 N. 60°36'33"W. 956.49'</p>	
<p>N. 90691.67 E. 84260.58</p>		<p>N. 28°05'24"W. 1147'</p>		<p>N. 51°57'42"E. 142.0'</p>		<p>N. 91163.39 E. 85092.65</p>	
<p>STENTON'S SUB'N L. 19 P. 52</p>		<p>DANIEL SCOTTEN'S RESUB'N. L. 3 P. 32</p>		<p>DANIEL SCOTTEN'S RESUB'N. L. 17 P. 41</p>		<p>DANIEL SCOTTEN'S RESUB'N. L. 17 P. 41</p>	
<p>FOR T. ST. 100' WD.</p>		<p>TEMP. EASEMENT FOR TEMP. ROADWAY</p>		<p>TEMP. EASEMENT FOR TEMP. ROADWAY</p>		<p>TEMP. EASEMENT FOR TEMP. ROADWAY</p>	
<p>C.S.E. 3-24-65 Temp. Easements for Rdwy. Lot 7-Fort St. & 1st St. Dragonov</p>		<p>C.S.E. 6-24-64 PARCEL 1885 ROW LINE REV TO CLEAR BLDG #6360</p>		<p>C.S.E. 4-22-63 Parcel 1885 ROW LINE REV TO CLEAR BLDG #6360</p>		<p>C.S.E. 4-22-63 Parcel 1885 ROW LINE REV TO CLEAR BLDG #6360</p>	
<p>Auth Date Revision</p>		<p>Auth Date Revision</p>		<p>Auth Date Revision</p>		<p>Auth Date Revision</p>	
<p>SQUAD LEADER E.A.J. DATE 10-23</p>		<p>DRAWN BY J.M.W.F. DATE 10-23</p>		<p>CHECKED BY J.E.W. DATE 10-23</p>		<p>CORRECT</p>	
<p>APPROVED [Signature]</p>		<p>APPROVED [Signature]</p>		<p>APPROVED [Signature]</p>		<p>APPROVED [Signature]</p>	
<p>FOR ENGINEER OF HIGHWAY DESIGN</p>		<p>FOR ENGINEER OF HIGHWAY DESIGN</p>		<p>FOR ENGINEER OF HIGHWAY DESIGN</p>		<p>FOR ENGINEER OF HIGHWAY DESIGN</p>	
<p>CITY OF DETROIT</p>				<p>MICHIGAN STATE HIGHWAY DEPARTMENT</p>			
<p>PLANS PREPARED BY THE BOARD OF WAYNE COUNTY ROAD COMMISSIONERS</p>				<p>PLANS PREPARED BY THE BOARD OF WAYNE COUNTY ROAD COMMISSIONERS</p>			
<p>PHILIP J. NEUDECK WILLIAM E. KREGER AL BARBOUR</p>				<p>PHILIP J. NEUDECK WILLIAM E. KREGER AL BARBOUR</p>			
<p>ITEM 513 I-75-(153)-49</p>				<p>ITEM 513 I-75-(153)-49</p>			
<p>STA. 1147+ TO STA. 1156+</p>				<p>STA. 1147+ TO STA. 1156+</p>			
<p>5-D</p>				<p>6-A</p>			
<p>82194-T & J</p>				<p>82194-T & J</p>			

R64

DANIEL SCOTTEN'S RESUBDIVISION

L. 3 P. 32



CITY OF DETROIT

MICHIGAN STATE HIGHWAY DEPARTMENT

I-75 FISHER FREEWAY
 R.O.W. SECTION 6-A
 DRAGON AV. TO CAVALRY AV.
 ITEM 513 I-75-1(53)-49
 STA. 1156+ TO STA. 1164+

ISSUE NO. DATE
 COUNTY JOB SHEET NO.
 1300
 STATE PROJECT
 82194-J

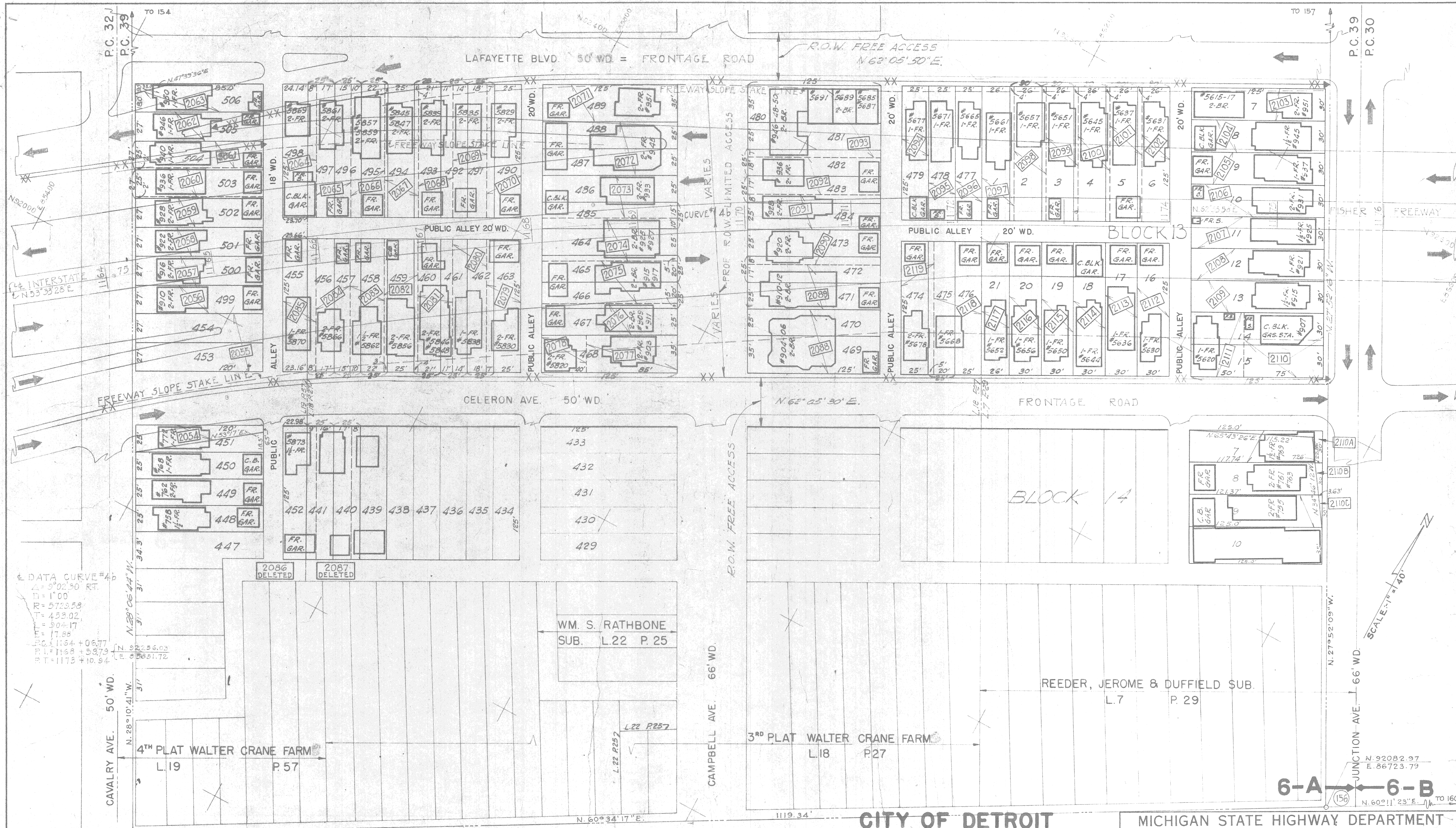
PLANS PREPARED BY THE BOARD OF
WAYNE COUNTY ROAD COMMISSIONERS
 PHILIP J. NEUDECK WILLIAM E. KREGER AL BARBOUR

APPROVED: *[Signature]*
 ENGINEER OF HIGHWAY DESIGN

Auth	Date	Revision
G.S.R.	4-26-63	Final ROW

N. 91163.39
 E. 85092.65

© W. ELLIOTT CO. 409-250-7-53



DATA CURVE #4
 $\Delta = 90.250$ RT.
 $D = 1.00$
 $R = 5723.58$
 $T = 453.02$
 $E = 304.17$
 $L = 17.88$
 $PC = 1164 + 06.77$
 $PT = 1168 + 50.79$
 $PI = 1173 + 10.94$

N. 91532.99
 E. 85748.88
 FORT ST. 100' WD.

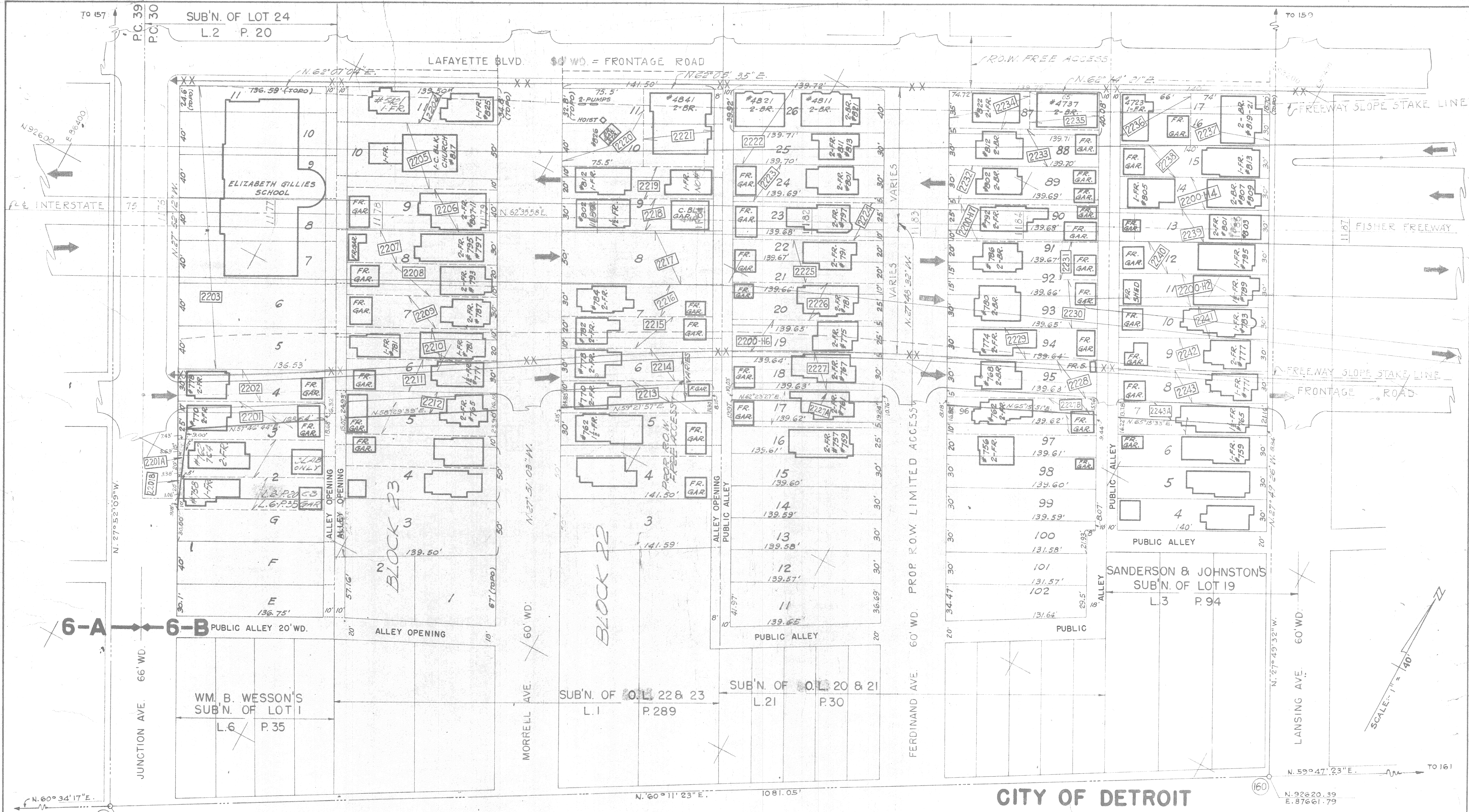
Auth.	Date	Revision
C.S.P.	1/26/63	Final R.O.W.

SQUAD LEADER *E.A.J.* DATE
 DRAWN BY *W.S.J.M.* 10-63
 CHECKED BY *C.R.E.J.* 10-63
 CORRECT
John H. ...
 ENGINEER OF HIGHWAY DESIGN

PLANS PREPARED BY THE BOARD OF
WAYNE COUNTY ROAD COMMISSIONERS
 PHILIP J. NEUDECK WILLIAM E. KREGER AL BARBOUR
 APPROVED *...*
 ENGINEER OF STRUCTURES AND EXPRESSWAYS

MICHIGAN STATE HIGHWAY DEPARTMENT
 I-75 FISHER FREEWAY
 R.O.W. SECTION 6-A
 CAVALRY AVE. TO JUNCTION AVE.
 ITEM 513 I-75-1(53)-49
 STA. 1164+ TO STA. 1175+
 ISSUE NO. 1 DATE 10-3-63
 COUNTY JOB SHEET NO. 1300
 STATE PROJECT 82194-J

R 66



CITY OF DETROIT

MICHIGAN STATE HIGHWAY DEPARTMENT

Auth.	Date	Revision
J.S.R.	4-10-63	Final R.O.W.

SQUAD LEADER E.A.J.
DRAWN BY J.M. W.L.
CHECKED BY J.S. A.W.
CORRECT

DATE 10-63
10-63

APPROVED *[Signature]*
FOR ENGINEER OF HIGHWAY DESIGN

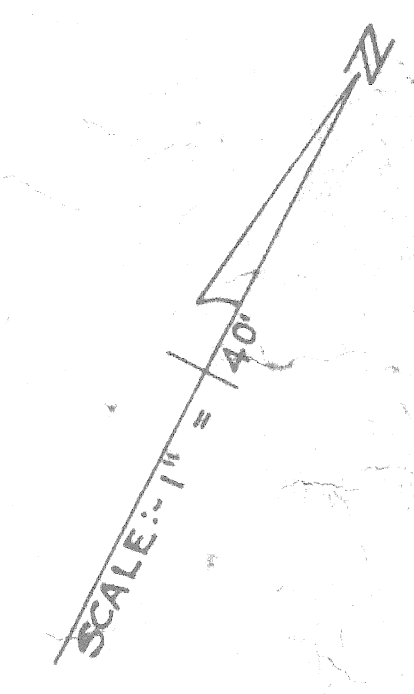
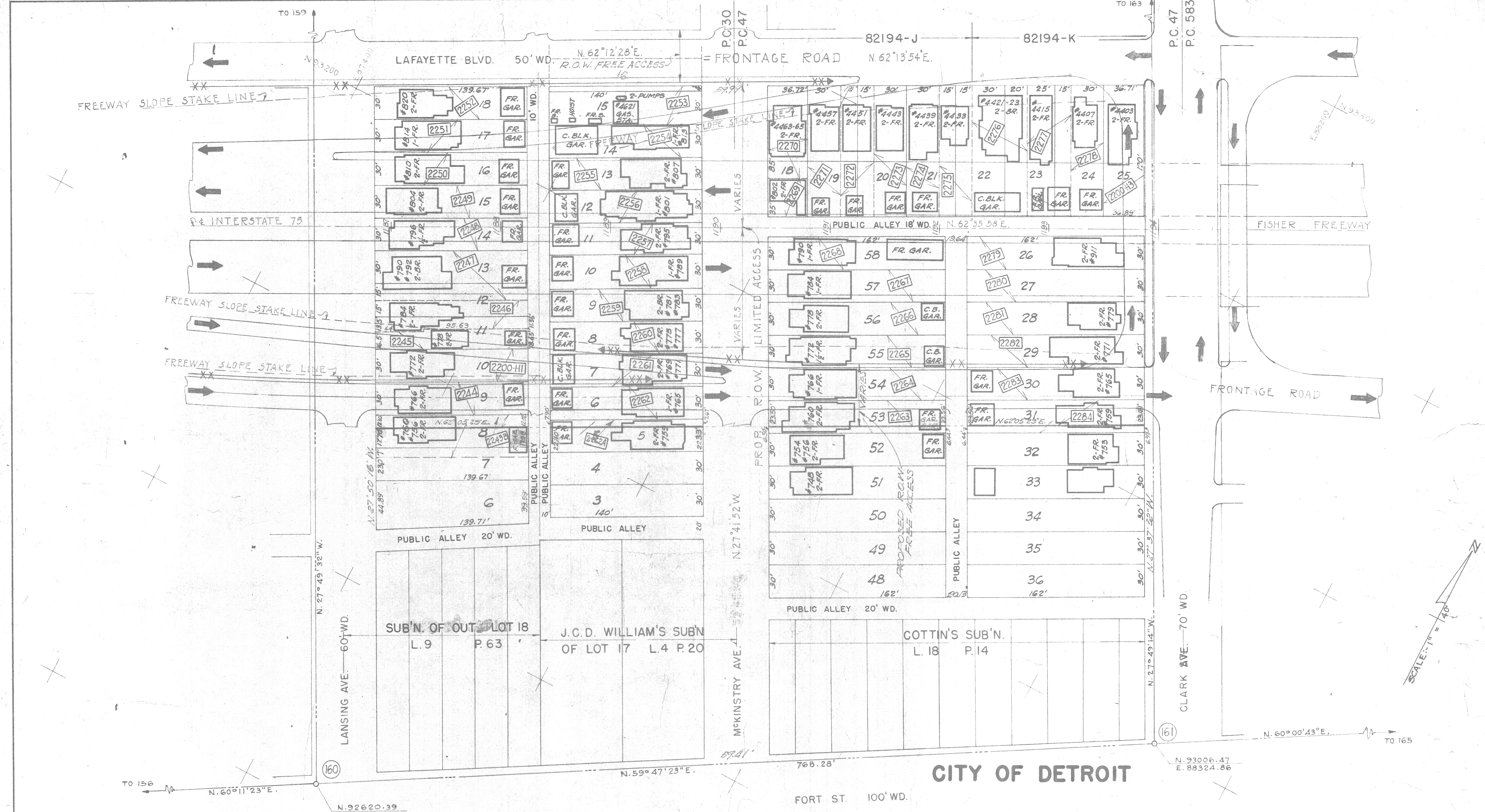
PLANS PREPARED BY THE BOARD OF
WAYNE COUNTY ROAD COMMISSIONERS
PHILIP J. NEUDECK
WILLIAM E. KREGER
AL BARBOUR

I-75 FISHER FREEWAY
R.O.W. SECTION 6-B
JUNCTION AVE. TO LANSING AVE.
ITEM 513 I-75-1(53)-49
STA. 1175+ TO STA. 1186+

ISSUE NO.	DATE
1300	10-3-63

COUNTY JOB SHEET NO.
STATE PROJECT
82194-J

R 67



Auth.	Date	Revision
C.S.R.	7-20-63	As Shown for Section 6-B at Clark to Intersect with R.67
C.S.R.	4-23-63	Final R.O.W.

SQUAD LEADER *E.A.J.* DATE 10-63
 DRAWN BY *W.E.J.N.* 10-63
 CHECKED BY *A.W.J.* 10-63
 CORRECT
John St. John
 FOR ENGINEER OF HIGHWAY DESIGN

PLANS PREPARED BY THE BOARD OF
WAYNE COUNTY ROAD COMMISSIONERS
 PHILIP J. NEUDECK WILLIAM E. KREGER AL BARBOUR
 APPROVED *[Signature]*
 ENGINEER OF STRUCTURES AND EXPRESSWAYS

MICHIGAN STATE HIGHWAY DEPARTMENT
 I-75 FISHER FREEWAY
 R.O.W. SECTION 6-B
 LANSING AVE. TO CLARK AVE.
 ITEM 513 I-75-1(53)-49
 STA. 1186+ TO STA. 1194+

ISSUE NO.	DATE
1300	6-3-63
STATE PROJECT 82194-J & K	