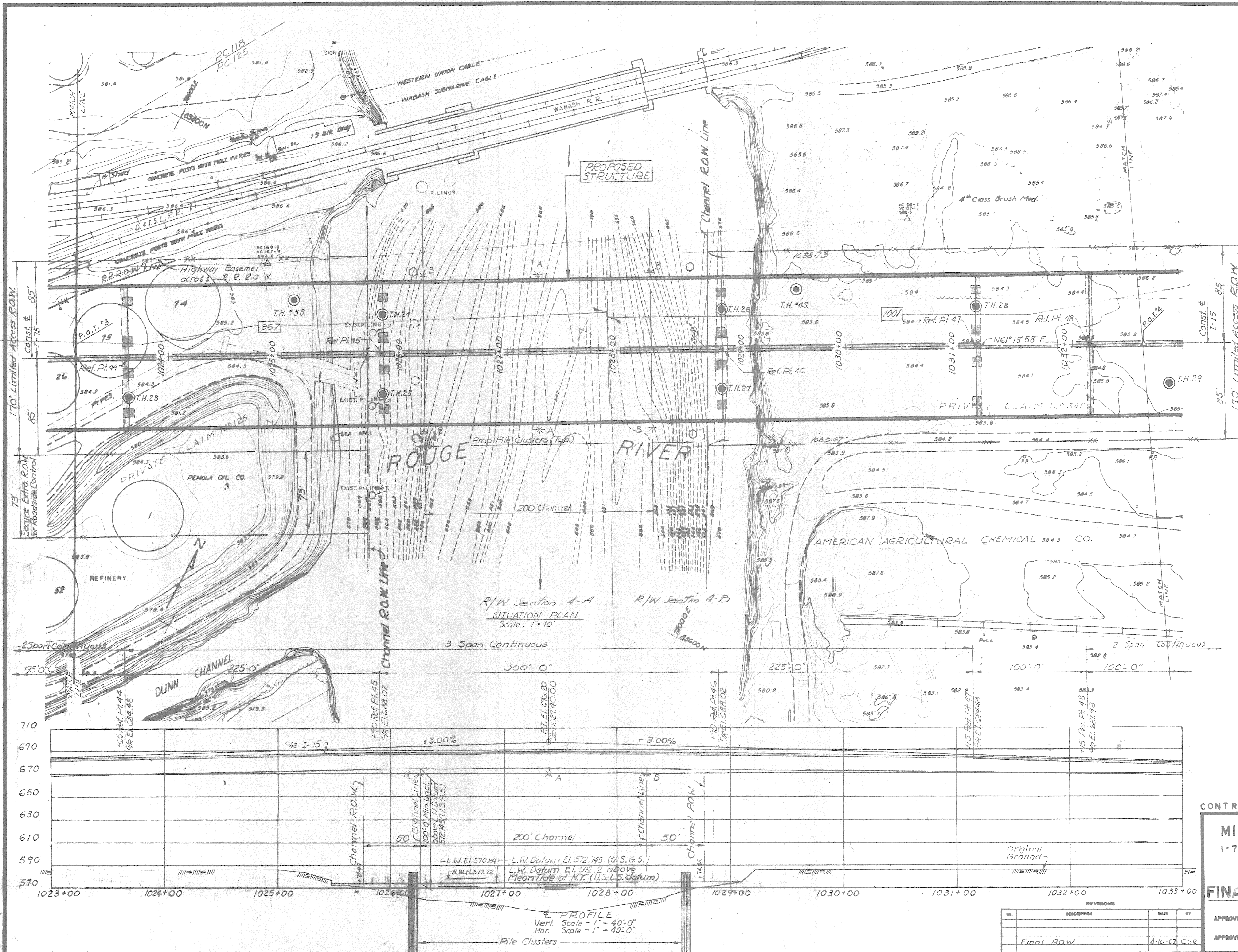


Make this line 8" long.

REFERENCES
 P.O.T. #3 83570.0000N 74618.2188E
 P.O.T. #4 84021.0000N 75442.5373E



NOTES:
 All Piers on this sheet are normal to Const. & I-75.
 U.S. Lake Survey Datum is 0.545' less than
 U.S.G.S. Datum. All elevations shown refer to
 U.S.G.S. Datum unless otherwise noted.
 For additional notes see sheet #53
 For Legend-Aids to Navigation see sheet
 A* 300' Center of channel marker (Green).
 B* 180' Channel Marker (Red).

CONTROL SEC. NO. 82194 PLAN DATE

MICHIGAN STATE HIGHWAY DEPARTMENT
 I-75 (FISHER EXPRESSWAY) CROSSING THE ROUGE RIVER
 IN THE CITY OF DETROIT

GENERAL PLAN OF SITE
FINAL RIGHT OF WAY PLANS

DESIGNED BY: FOSTER
 CHECKED BY: ENDOES 12.27.61
 TRACED BY: ENDOES 6.8.61
 CHECKED BY: D.C.F. 5.1.62

APPROVED: J. J. Cook 3.25.63
 ASST. ENGINEER OF DESIGN

BOI of 82194G

See Statz Plan B for data

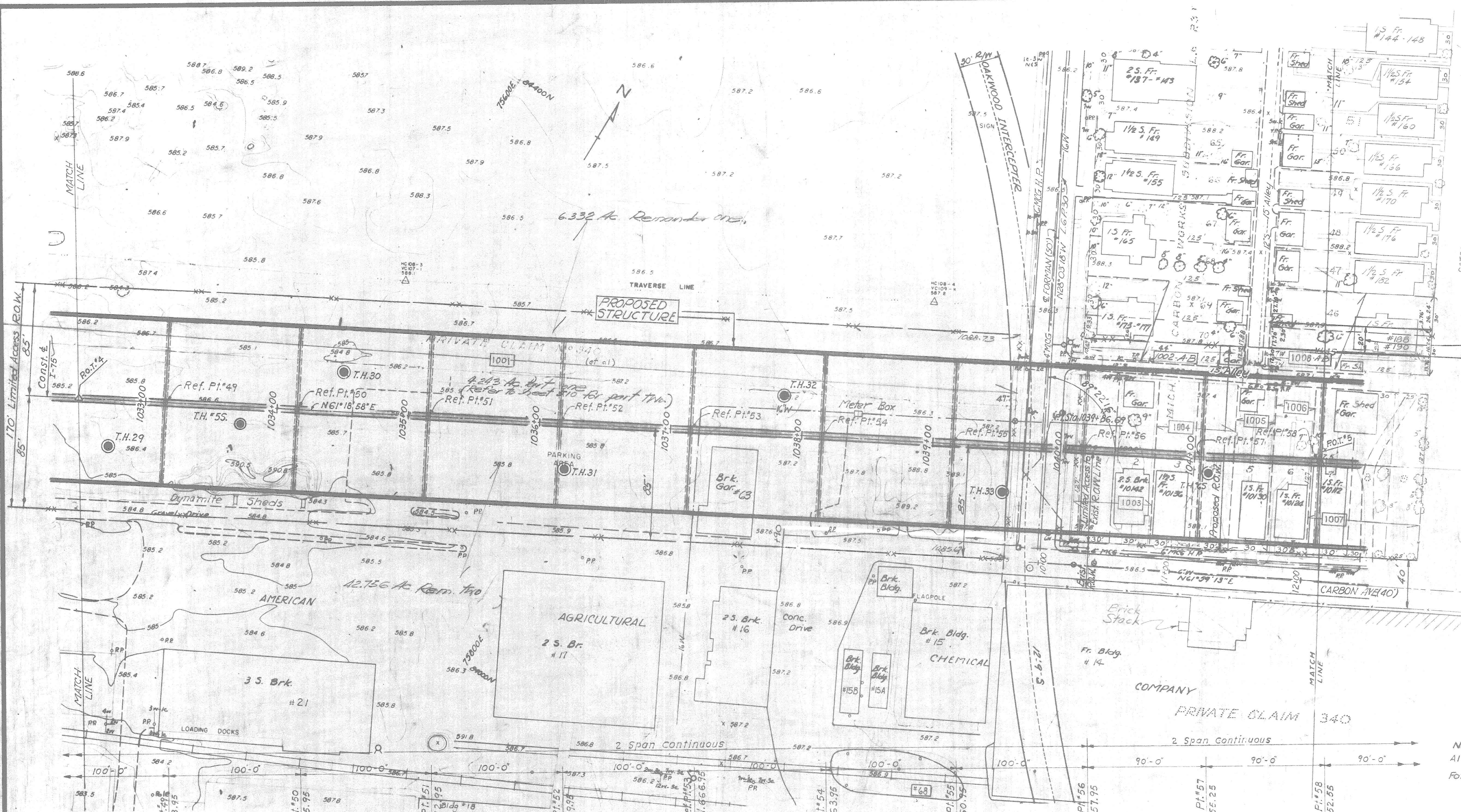
Make this line 8" long

REFERENCES

P.O.T. #4 84021.0000N 75442.5373E
P.O.T. #5 84474.0000N 76270.5114E

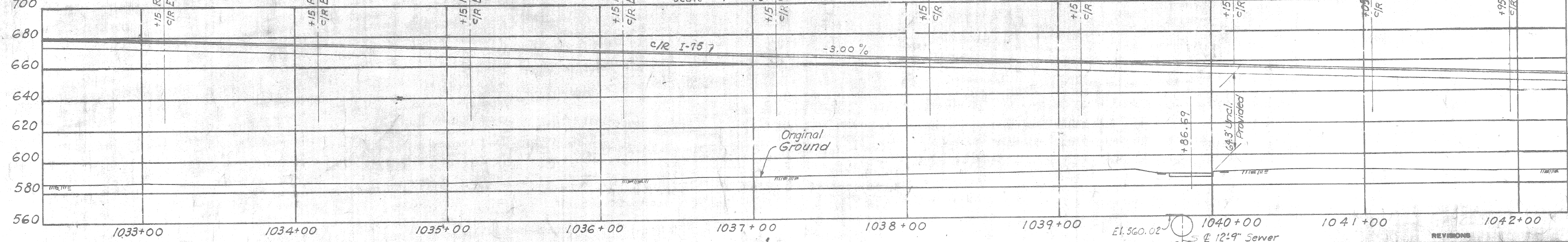
BENCH MARKS
B.M. #1-251 Elev 586.468
N.E. corner of Forman and Carbon (City of Detroit B.M.)

Reserve R.O.W. For Alley



NOTES:
All Pier #5 this sheet are normal to Const. @ I-75.
For additional notes see sheet # 503

SITUATION PLAN
Scale - 1" = 40'-0"



PROFILE
Vert. Scale - 1" = 40'-0"
Hor. Scale - 1" = 40'-0"

CONTROL SEC. NO. 82194 PLAN DATE 3-2-63

MICHIGAN STATE HIGHWAY DEPARTMENT
I-75 (FISHER EXPRESSWAY) CROSSING THE ROUGE RIVER
IN THE CITY OF DETROIT

**GENERAL PLAN OF SITE
FINAL RIGHT OF WAY PLANS**

APPROVED: *J.J. Cook* 3-2-63
DESIGN SUPERVISING ENGINEER
ASST. ENGINEER OF DESIGN

REVISIONS:

NO.	DESCRIPTION	DATE	BY
10	Revised Prop. Alley from lot 5 to lots 4 & 6	5-25-61	G.D.R.
11	inc. B.M. S. of Forman & Reserve R.O.W. for Alley	12-14-62	C.S.R.
	Final R.O.W.	4-16-62	C.S.R.

BOI of 82194 G