

PLANS PREPARED BY THE BOARD OF WAYNE COUNTY ROAD COMMISSIONERS

APPROVED: _____
ENGINEER OF HIGHWAY DESIGN

APPROVED: _____
ENGINEER OF STRUCTURES AND EXHIBITIONS

ISSUE NO. DATE CONTROL SECTION COUNTY PROJECT
12-1 82194

3000 IN DETAIL

ITEM 452 I-75-1(45)43
D 82194
R. O. W.

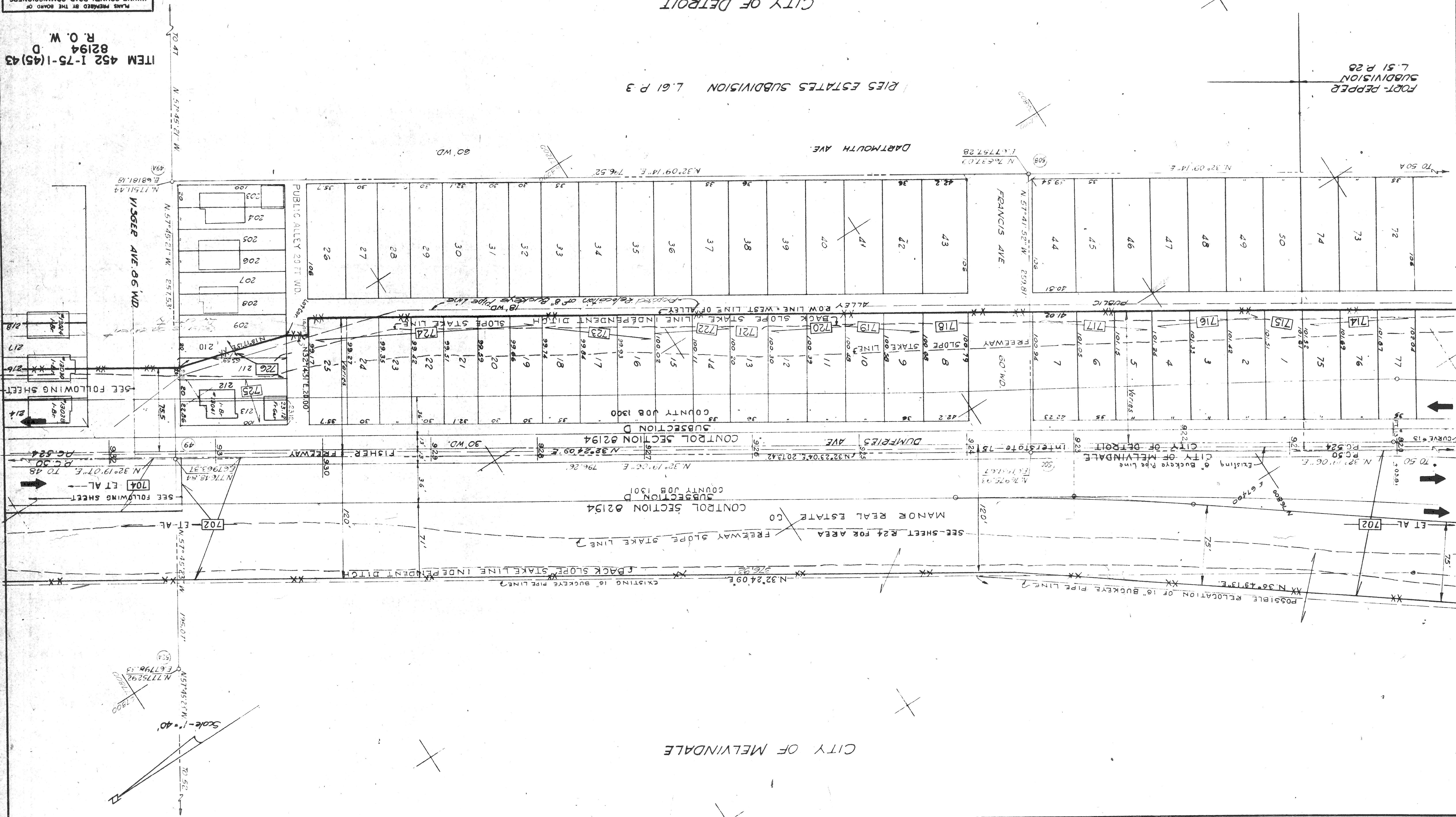
W.C.R. RIGHT-OF-WAY SECTION 3-C
SHEET R25

CS.R.14.63	Final R.O.W.
5/14/63	Added Buckeye line & slope stake lines
Auth Date	Revision

CITY OF DETROIT

RIES ESTATES SUBDIVISION L.61 P.3

FOOT-PEPPER SUBDIVISION L.51 P.28



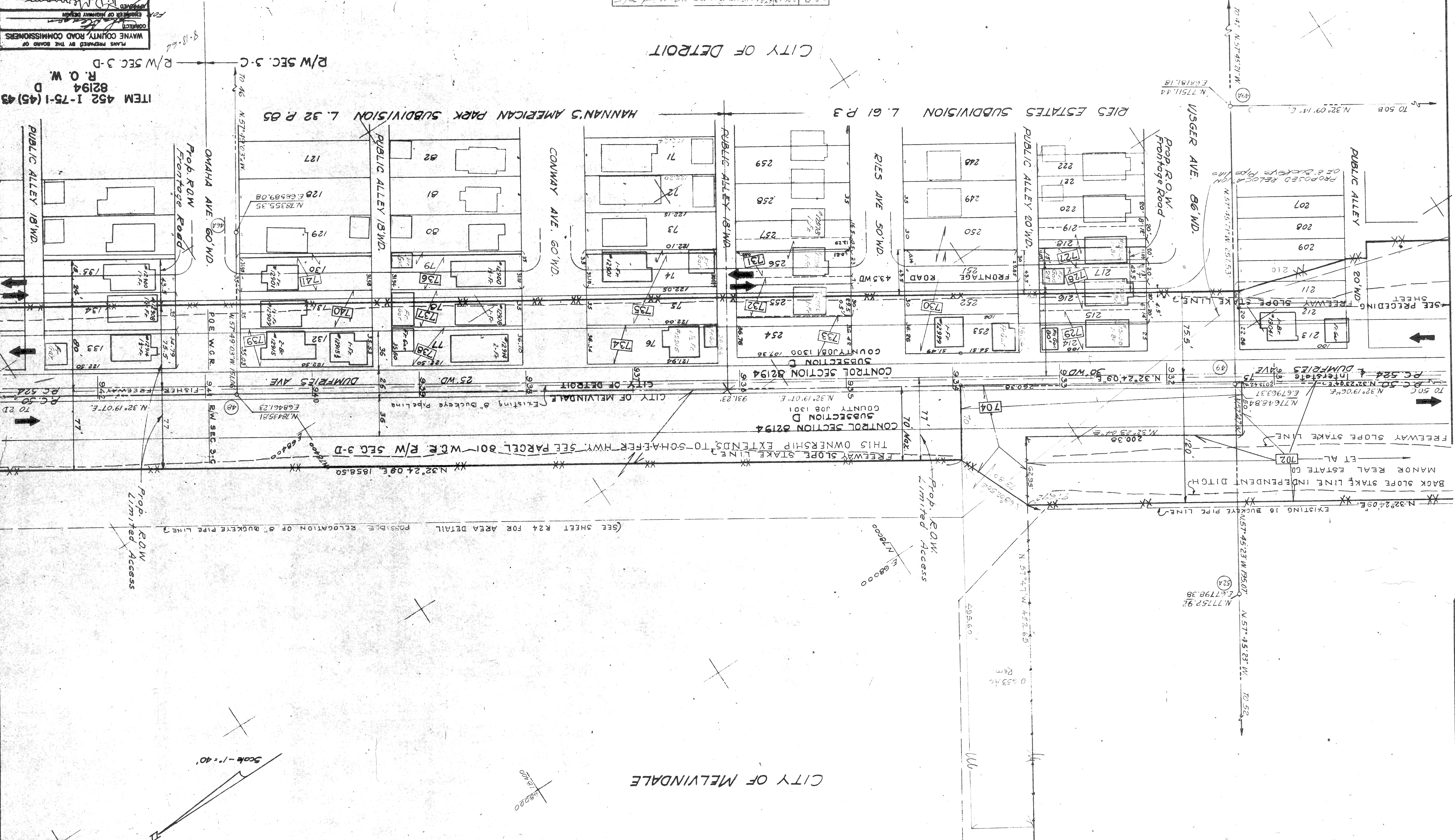
Scale - 1" = 40'

CITY OF MELVINDALE

PLANS PREPARED BY THE BOARD OF WAYNE COUNTY ROAD COMMISSIONERS
 APPROVED BY THE BOARD OF SUPERVISORS OF THE CITY OF DETROIT
 CONTROL SECTION
 ISSUE NO. 1
 12-1-82194
 1901 Melvindale

W.C.R. RIGHT-OF-WAY SECTION 3-C
 SHEET R.26

C.S.R.	1/6-65	Final R.O.W.
C.S.R.	5/1/82	Added Buckeye line & slope stake lines
C.S.R.	5/1/82	Added Buckeye line & slope stake lines



Scale - 1" = 40'

CITY OF MELVINDALE

ITEM 452 I-75-1(45) 43
 82194
 R.O.W.
 R/W SEC. 3-D

R/W SEC. 3-C

HANNAN'S AMERICAN PARK SUBDIVISION L. 32 P. 85

RIES ESTATES SUBDIVISION L. 61 P. 3

TO 50B N. 32° 09' 14" E.

TO 21 N. 32° 19' 07" E.

R/W SEC. 3-D

DUMFRIES AVE. 25' W.D.

CITY OF MELVINDALE

CONTROL SECTION 82194

TO 50C N. 32° 19' 06" E.

TO 22 N. 32° 19' 07" E.

R/W SEC. 3-D

EXISTING 8" BUCKEYE PIPE LINE

CITY OF MELVINDALE

CONTROL SECTION 82194

TO 50D N. 32° 24' 09" E.

TO 23 N. 32° 19' 07" E.

R/W SEC. 3-D

EXISTING 8" BUCKEYE PIPE LINE

CITY OF MELVINDALE

CONTROL SECTION 82194

TO 50E N. 32° 24' 09" E.

TO 24 N. 32° 19' 07" E.

R/W SEC. 3-D

EXISTING 8" BUCKEYE PIPE LINE

CITY OF MELVINDALE

CONTROL SECTION 82194

TO 50F N. 32° 24' 09" E.

TO 25 N. 32° 19' 07" E.

R/W SEC. 3-D

EXISTING 8" BUCKEYE PIPE LINE

CITY OF MELVINDALE

CONTROL SECTION 82194

TO 50G N. 32° 24' 09" E.

TO 26 N. 32° 19' 07" E.

R/W SEC. 3-D

EXISTING 8" BUCKEYE PIPE LINE

CITY OF MELVINDALE

CONTROL SECTION 82194

TO 50H N. 32° 24' 09" E.

TO 27 N. 32° 19' 07" E.

R/W SEC. 3-D

EXISTING 8" BUCKEYE PIPE LINE

CITY OF MELVINDALE

CONTROL SECTION 82194

TO 50I N. 32° 24' 09" E.

TO 28 N. 32° 19' 07" E.

R/W SEC. 3-D

EXISTING 8" BUCKEYE PIPE LINE

CITY OF MELVINDALE

CONTROL SECTION 82194

TO 50J N. 32° 24' 09" E.

TO 29 N. 32° 19' 07" E.

R/W SEC. 3-D

EXISTING 8" BUCKEYE PIPE LINE

CITY OF MELVINDALE

CONTROL SECTION 82194

TO 50K N. 32° 24' 09" E.

TO 30 N. 32° 19' 07" E.

R/W SEC. 3-D

EXISTING 8" BUCKEYE PIPE LINE

CITY OF MELVINDALE

CONTROL SECTION 82194

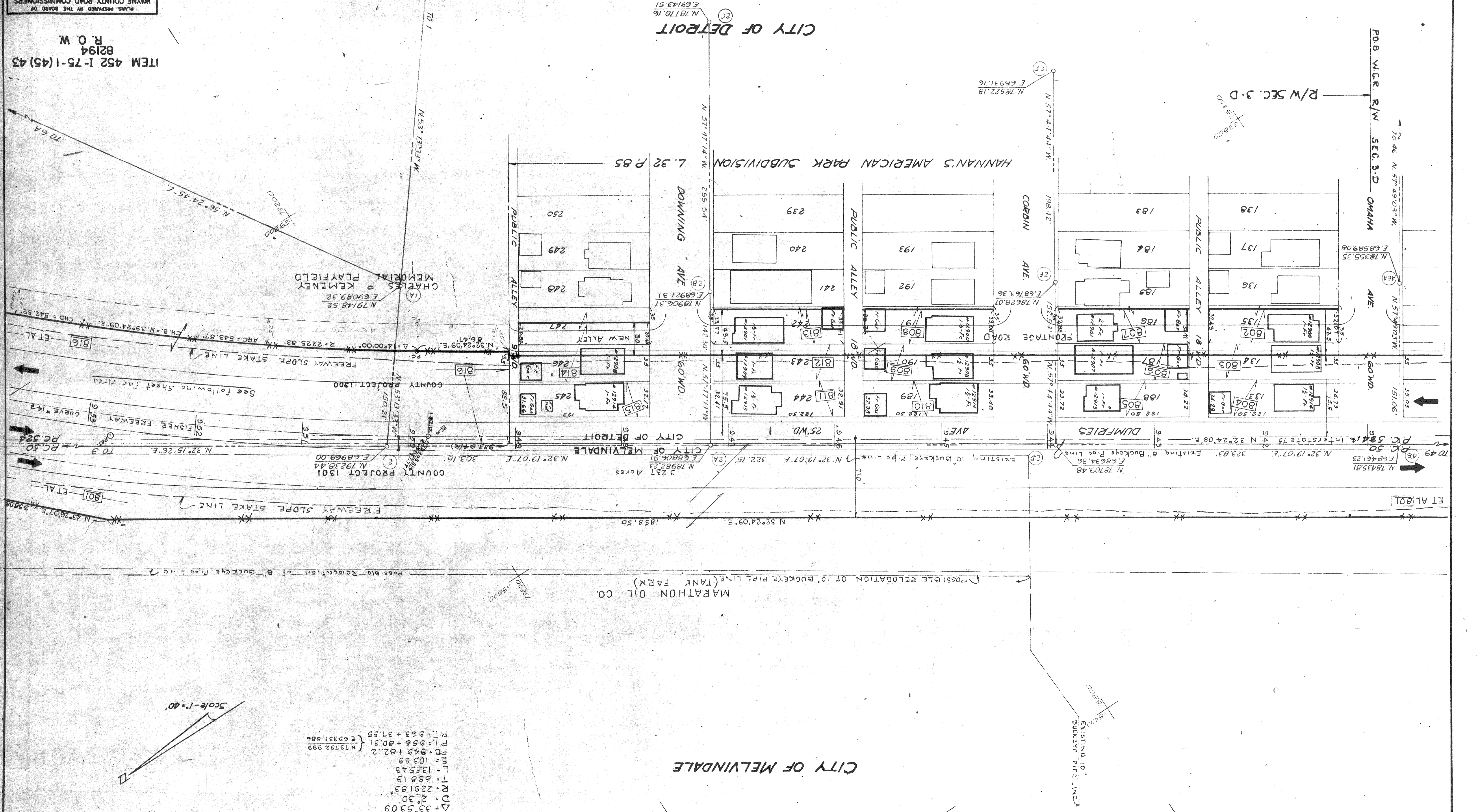
TO 50L N. 32° 24' 09" E.

WAYNE COUNTY ROAD COMMISSIONERS
 PLANS PREPARED BY THE BOARD OF
 CONNECT
 ENGINEER OF HIGHWAY DESIGN
 APPROVED
 ENGINEER OF STRUCTURES AND DESIGN
 ISSUE NO. 82194
 SHEET 27

W. C. B. RIGHT-OF-WAY SECTION 3-D
 SHEET 27

C.S.P. 5/1/23	Bookeys pipeline added
Auth. Date	REVISION
C.S.P. 1/1/75	Final R.O.W.

ITEM 452 I-75-1(45) 43
 82194
 R. O. W.



CITY OF MELVINDALE

MARATHON OIL CO
 (TANK FARM)

Possible relocation of 10" Buckeye pipe line (TANK FARM)

Possible relocation of 8" Buckeye pipe line

DATA CURVE #14
 Δ = 33°53'09"
 D = 27.30
 R = 2291.83
 T = 698.19
 L = 1355.43
 E = 103.99
 F = 949 + 82.12
 P = 956 + 80.31
 R = 963 + 31.55
 N 17929.99
 E 69331.886

Scale - 1" = 40'

See following sheet for Area

Freeway Slope Stake Line

CHARLES P. KEMENY
 MEMORIAL PLAYFIELD

TO 1
 N 53°13'33" W

TO 6A
 N 56°24'45" E

TO 46
 N 57°45'03" W

TO 49
 N 32°19'07" E

TO 3
 N 32°15'26" E

TO 2
 N 43°26'07" E

CITY OF DETROIT

POB W.C.R. R/W SEC. 3-D OMAHA

R/W SEC. 3-D

AVE.

ET AL 801

ET AL 801

ET AL 801

ET AL 801

ET AL 801

ET AL 801

ET AL 801

ET AL 801

ET AL 801

