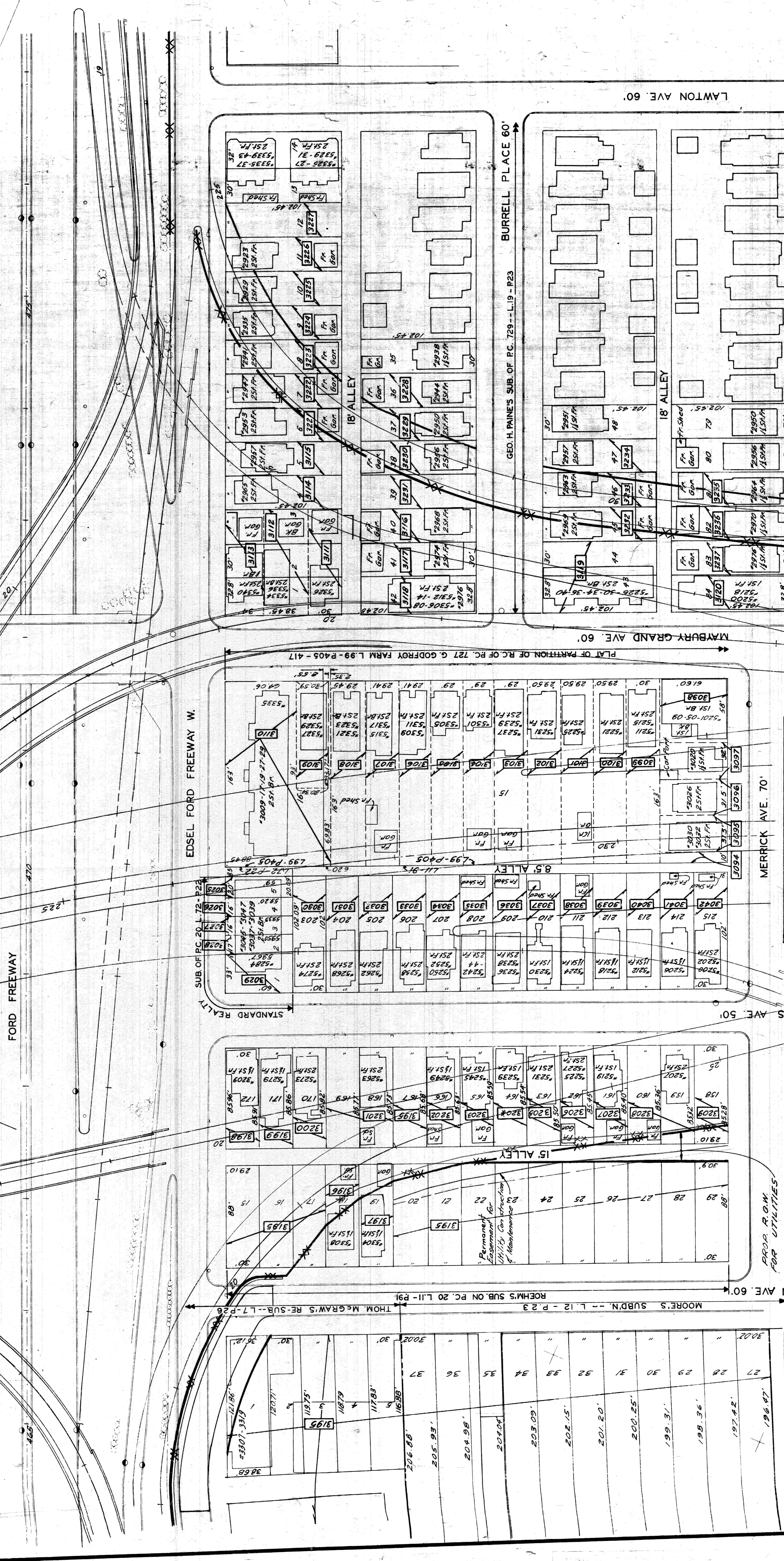


STATE	PROJ. NO.	SHEET	DATE
MICH.	4	1	
CITY	COUNTY	SHEET	DATE
Wayne	Wayne	1	10/17/96
ROUTE	PROJECT		
R82123K	Jeffries Freeway		



PREPARED BY  
THE CITY OF DETROIT  
IN COOPERATION WITH  
THE WAYNE COUNTY ROAD COMMISSION

**I-96 JEFFRIES FREEWAY**  
**R.O.W.**  
**FORD FREEWAY TO MERRICK**

PLAT OF PARTITION OF RC OF PC, 727 G. GODFREY FARM L.99-P.405-417

3	Revised R.O.W. Line	8-16-94 C.S.R.
4	Revised R.O.M. Line & Corrected Easement Note	7-22-94 C.S.R.
5	Revised R.O.W. Line & Corrected Parcel Dimensions	3-10-94 C.S.R.
6	REVISIONS	DATE AUTH.
	FINAL R.O.W.	2-1-96 C.S.R.

NOTE  
FOR DATA ON PARTIAL R.O.W. PARCELS  
SEE SPECIAL DETAIL SHEET 512

PROJ. R.O.M.  
FOR UTILITIES

LEGEND  
FREE ACCESS R.O.W.  
-XX-XX-XX- LIMITED ACCESS R.O.W.

27	196.97'
28	197.42'
29	198.36'
30	200.25'
31	201.20'
32	202.15'
33	203.09'
34	204.98'
35	205.93'
36	206.88'
37	207.83'
38	208.78'

PLAT NO. R82123K  
DATE 10/17/96

MOORE'S SUBD'N -- L.12 - P.23  
THOM MCGRAW'S RE-SUB--L7-P26  
ROEHM'S SUB. ON PC. 20 L.11 - P.91

STANDARD REALTY  
SUB OF PC. 20 L.12 - P.23

EDSEL FORD FREEWAY W.  
MERRICK AVE. 70'

WILLIAMS AVE. 50'

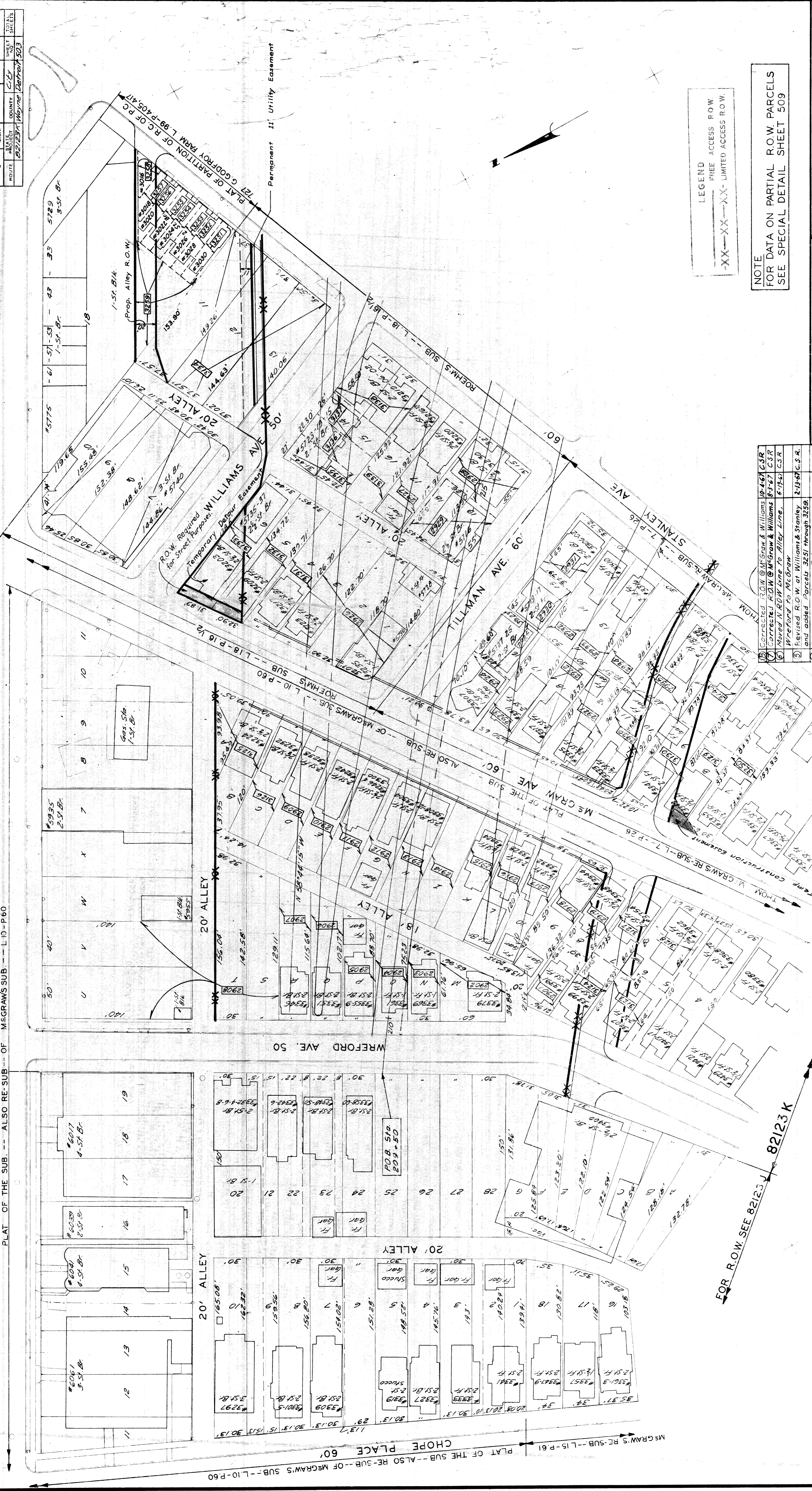
TILLMAN AVE. 60'

C MAY - J KNOW  
R. PLATER

B.M. NO.	STATE	PROJ. NO.	SHEET NO.	TOTAL SHEETS
4	MICH		5	10
PROJECT		CITY	SHEET NO.	
87237-1 Wayne Detroit 503		Wayne	503	

FOR R.O.W. SEE 82123J  
 GRAND RIVER AVE. 100'

FOR R.O.W. SEE 82123K  
 WRETFORD AVE. 50'



LEGEND  
 FREE ACCESS R.O.W.  
 XX-XX-XX LIMITED ACCESS R.O.W.

NOTE  
 FOR DATA ON PARTIAL R.O.W. PARCELS  
 SEE SPECIAL DETAIL SHEET 509

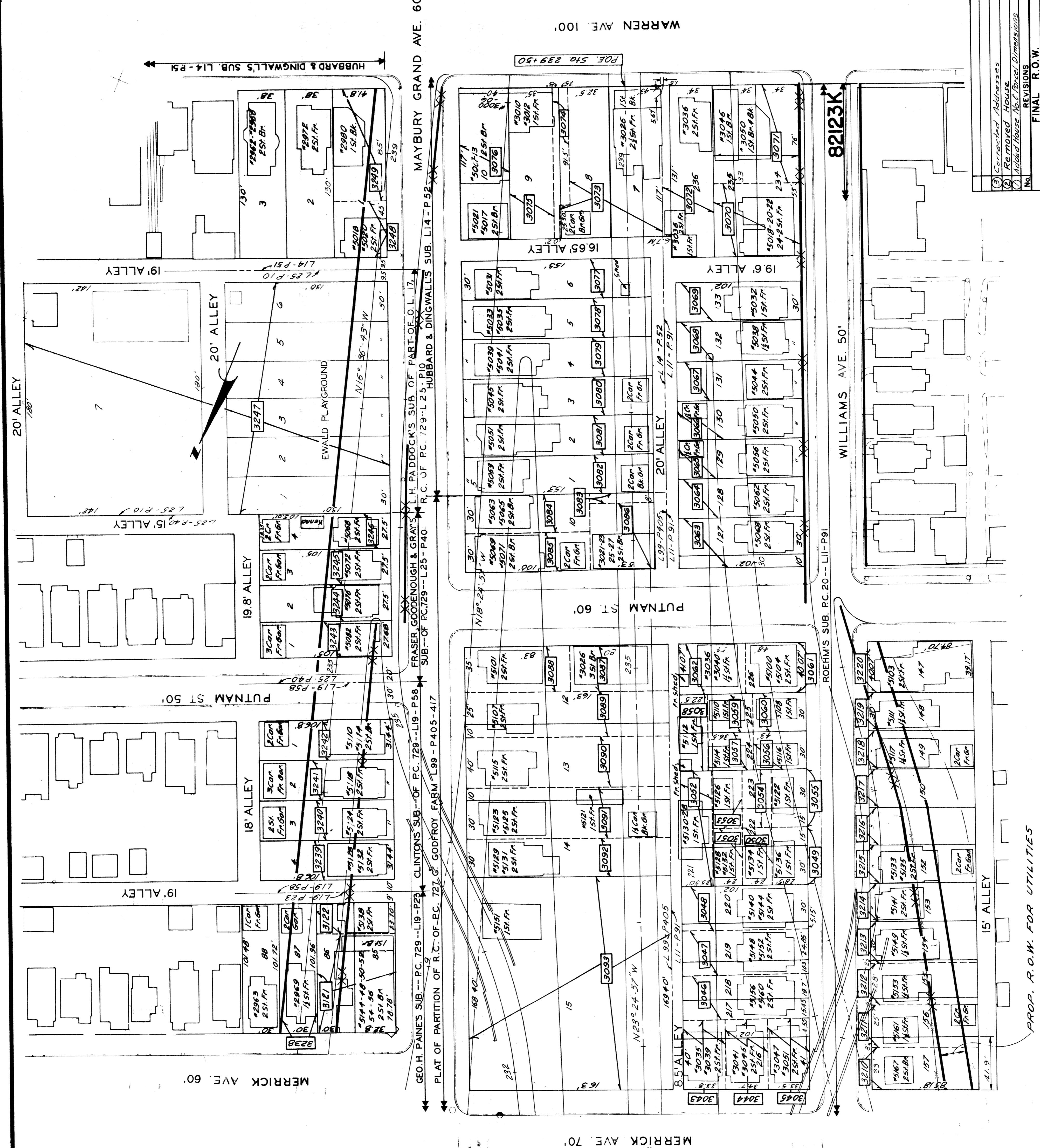
I-96 JEFFRIES FREEWAY  
 R.O.W.  
 WRETFORD TO STANLEY

PREPARED BY  
 THE CITY OF DETROIT  
 IN COOPERATION WITH  
 THE WAYNE COUNTY ROAD COMMISSION

1	Corrected R.O.W. @ McGraw & Williams	10-4-67 C.S.R.
2	Corrected R.O.W. @ McGraw & Williams	8-3-67 C.S.R.
3	Moved N.R.O.W. Line to Alley Line	6-19-61 C.S.R.
4	Wrexford to McGraw	
5	Revised R.O.W. at Williams & Stanley	2-19-67 C.S.R.
6	Revised R.O.W. at Williams & Stanley	2-19-67 C.S.R.
7	Change R.O.W. Line @ South	11-13-66 C.S.R.
8	Change Drive Wrexford to Stanley	11-13-66 C.S.R.
9	Change Easement @ Williams & Stanley	7-24-66 C.S.R.
10	Temp. Construction Easement Added	7-24-66 C.S.R.
11	Revised R.O.W. Line Easement Dimensions	7-24-66 C.S.R.
12	Final P.O.W.	2-17-66 C.S.R.

FILE NO. PROJECT NUMBER SHEET NO.  
 R82123 K 87237-1 503

STATE	PROJ. NO.	FROM	SHEET
MI			513
ROUTE	CITY	SHEET	SHEET
I-96	Warren	513	513
STATE	PROJ. NO.	FROM	SHEET
MI			513
ROUTE	CITY	SHEET	SHEET
I-96	Warren	513	513



LEGEND  
 FREE ACCESS ROW  
 -XX--XX--XX- LIMITED ACCESS ROW

NOTE  
 FOR DATA ON PARTIAL R.O.W PARCELS  
 SEE SPECIAL DETAIL SHEET 513

I-96 JEFFRIES FREEWAY  
 R.O.W.  
 MERRICK TO WARREN

PREPARED BY  
 THE CITY OF DETROIT  
 IN COOPERATION WITH  
 THE WAYNE COUNTY ROAD COMMISSION

NO.	REVISIONS	DATE	AUTH.
1	Corrected Addresses	5-4-67	C.S.R.
2	Removed House	7-22-66	C.S.R.
3	Added House, No. 1302, Dimensions	9-10-66	C.S.R.
4		2-7-68	C.S.R.

PROP. R.O.W. FOR UTILITIES

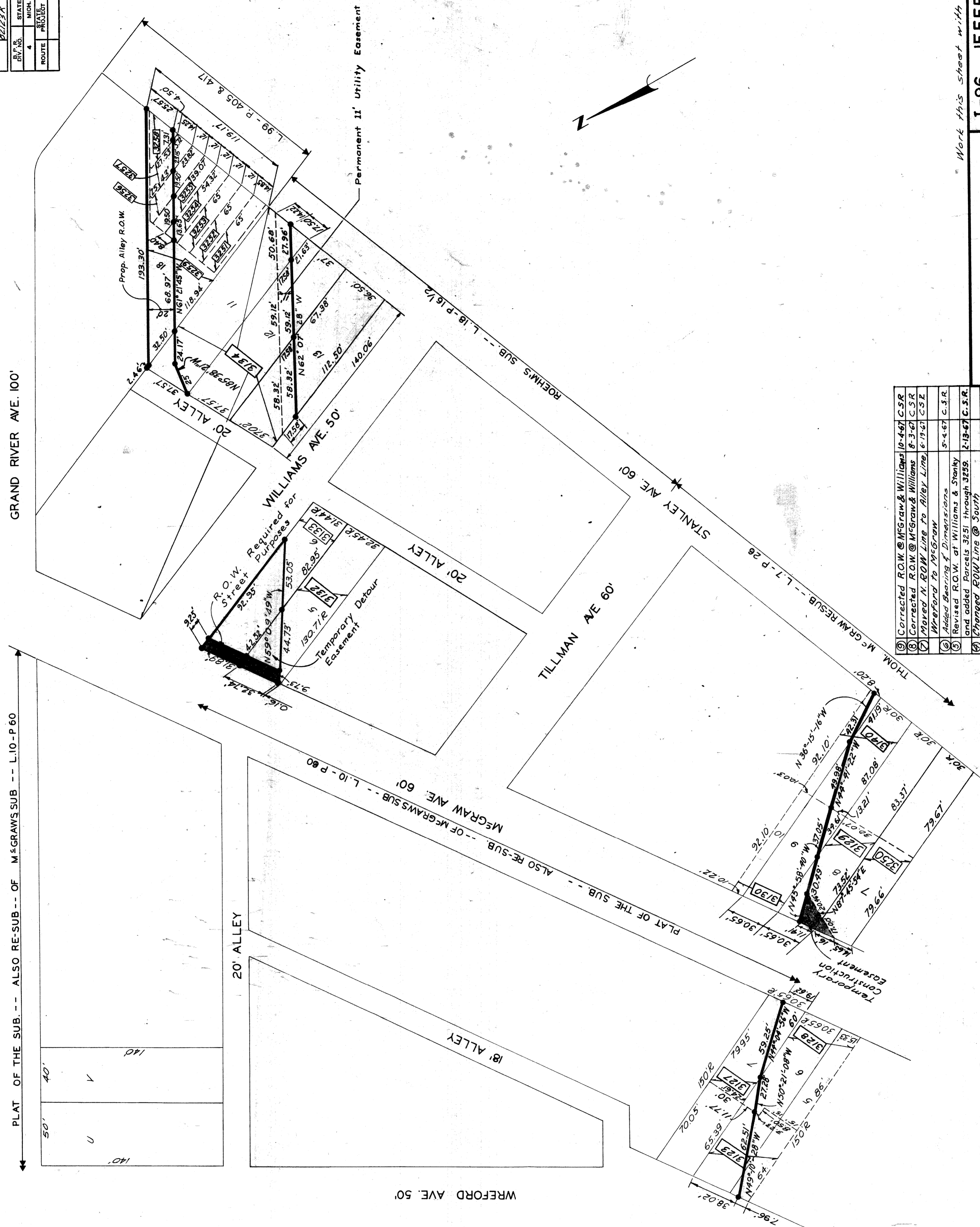
FINAL R.O.W.

R82123K

TRACED BY  
 CHECKED BY  
 R. KLATT - R. PLATER  
 BR. ASSOC. - ROAD ENGRS.

DEPARTMENT OF PUBLIC WORKS  
 CITY ENGINEERS OFFICE  
 BUREAU OF HIGHWAYS AND EXPRESSWAYS

STATE	PROJ. NO.	SHEET NO.	TOTAL SHEETS
MICH.			
COUNTY			
ROUTE			



PLAT OF THE SUB. -- ALSO RE-SUB -- OF MCGRAW'S SUB -- L-10-P-60

GRAND RIVER AVE. 100'

Work this sheet with sheet # 503

I-96 JEFFRIES FREEWAY  
R.O.W.  
WREFORD TO STANLEY

PREPARED BY  
THE CITY OF DETROIT  
IN COOPERATION WITH  
THE WAYNE COUNTY ROAD COMMISSION

No.	REVISIONS	DATE	APPR.
1	Final R.O.W.	2-7-62	C.S.R.
2	Revised R.O.W. at Williams & Stanley and added parcels 3251 through 3259.	2-13-67	C.S.R.
3	Changed ROW Line @ Stanley	11-23-66	C.S.R.
4	Changed Easement @ William & Stanley	7-25-66	C.S.R.
5	Temp. Construction Easement Added	3-10-66	C.S.R.
6	Revised Bearings, R.O.W. Line, Dimensions	3-10-66	C.S.R.

FINAL R.O.W.

FILE NO. R 82123 K  
PROJECT NUMBER 42137 156  
JOB 503

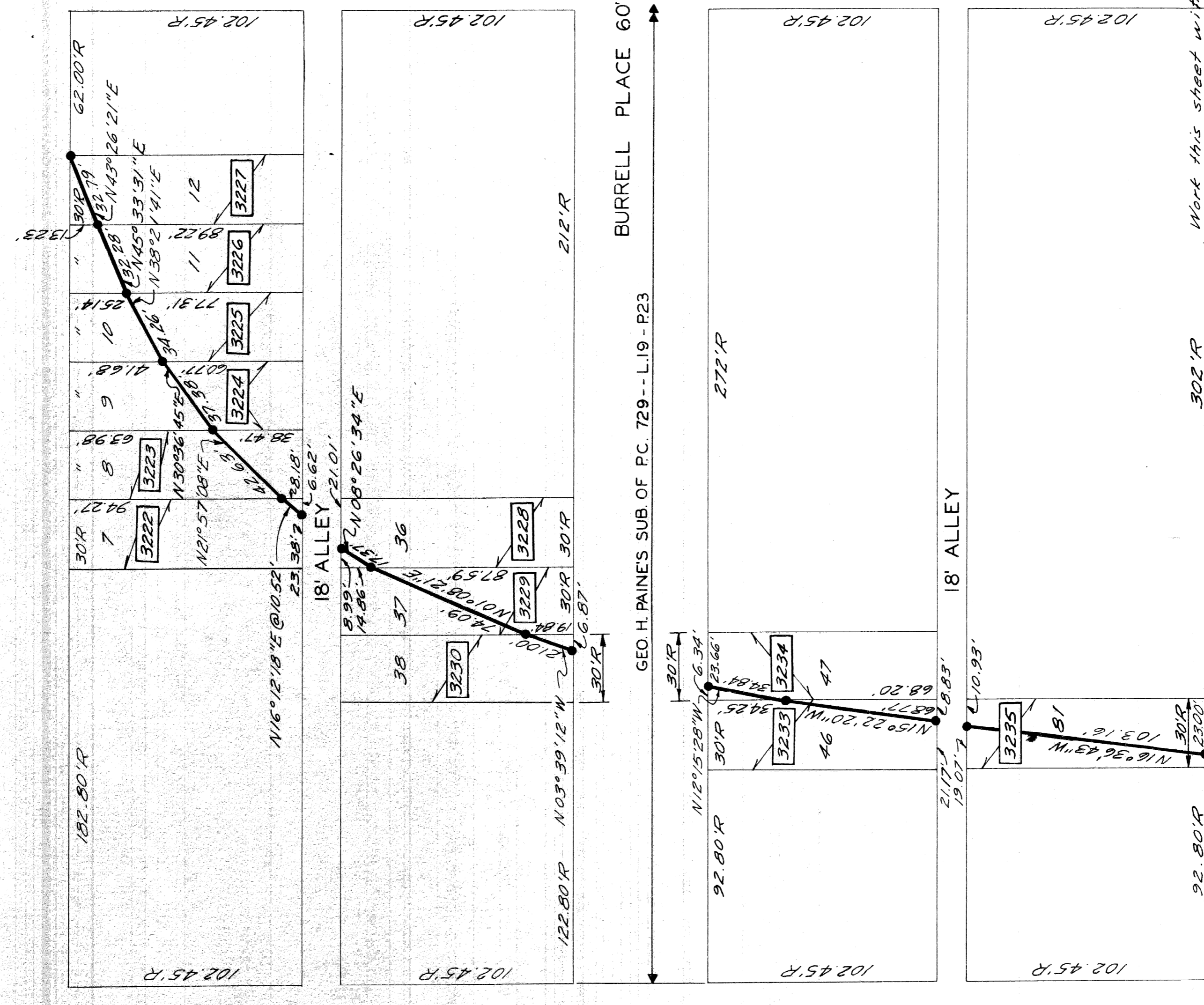
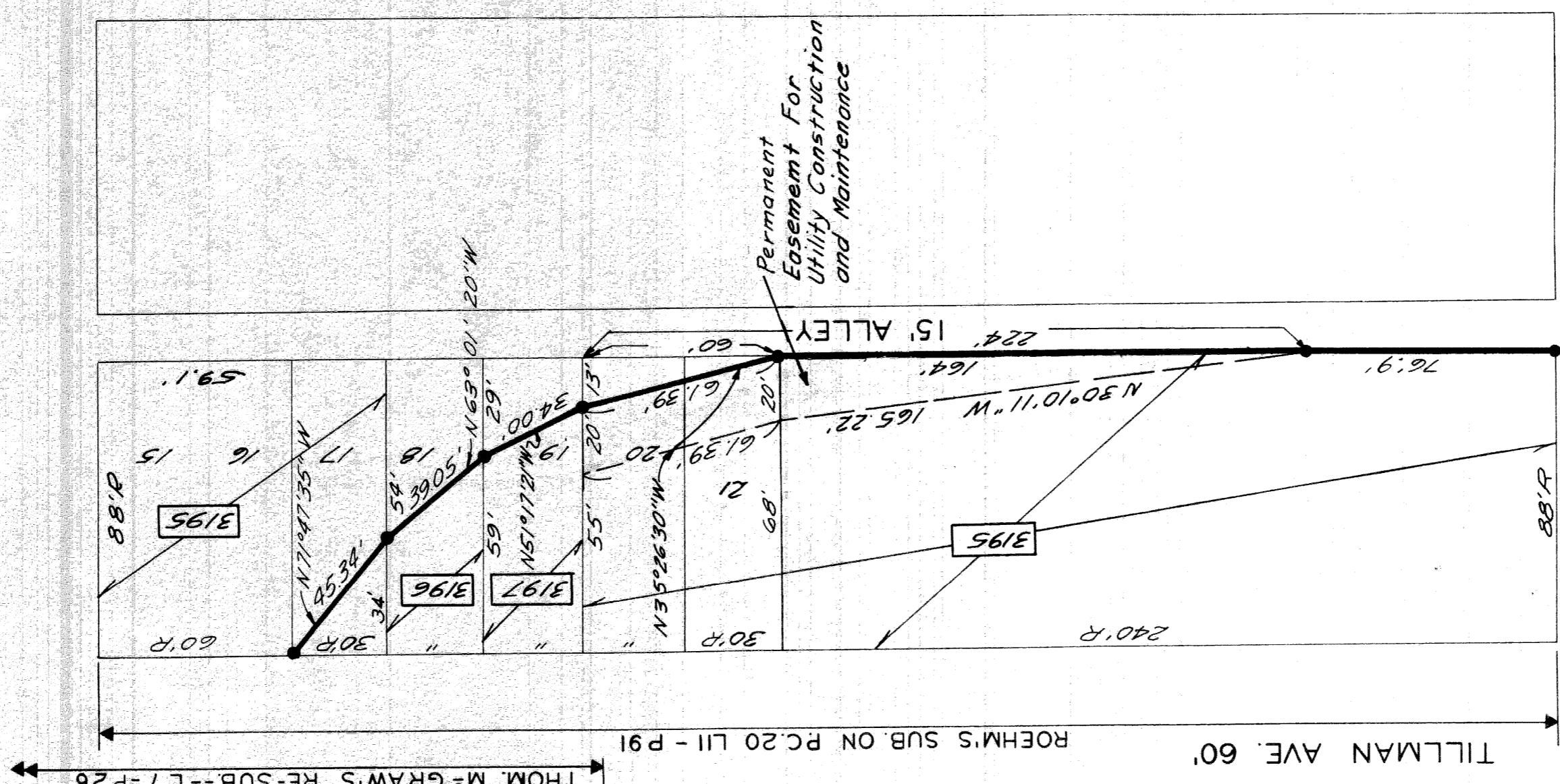
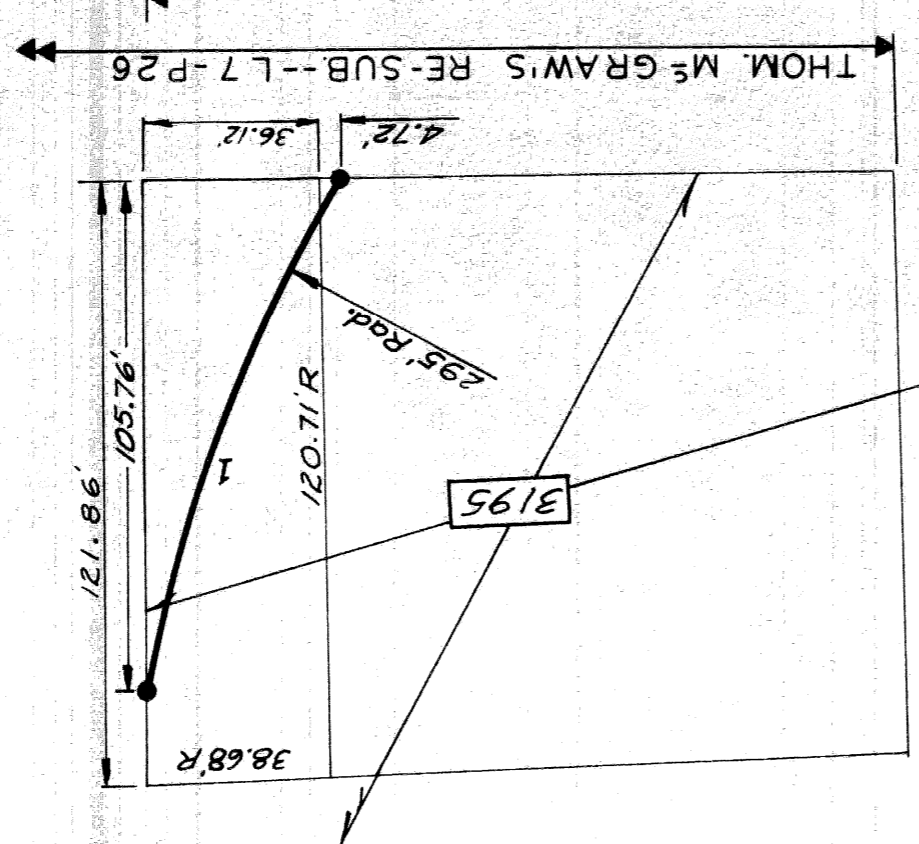
APPROVED	ADDED KNOWN
R. PATER	
C. MAY	

PLANS PREPARED BY  
CITY OF DETROIT  
DEPARTMENT OF PUBLIC WORKS  
CITY ENGINEERS OFFICE  
BUREAU OF HIGHWAYS AND EXPRESSWAYS

STATE	FISCAL YEAR	SHEET NO.	TOTAL SHEETS
MI			
COUNTY	PROJECT	SHEET NO.	TOTAL SHEETS
Wayne	Jeffries Freeway	512	
ROUTE	PROJECT	SHEET NO.	TOTAL SHEETS
82123K	Jeffries Freeway	512	

PLANS PREPARED BY  
CITY OF DETROIT  
DEPARTMENT OF PUBLIC WORKS  
CITY ENGINEERS OFFICE  
DIVISION OF HIGHWAYS AND EXPRESSWAYS

V. KNOX - C.M.A.Y.  
R. PLATER



①	Revised R.O.W. Line	8-16-66	C.S.R.
②	Corrected R.O.W. Line & Added Parcel Dimensions	7-22-66	C.S.R.
③	Corrected Bearing & Rev. R.O.W. Line	3-10-66	C.S.R.
REVISIONS			DATE APPR.
FINAL R.O.W.			2-17-66 C.S.R.

MERRICK AVE. 60'

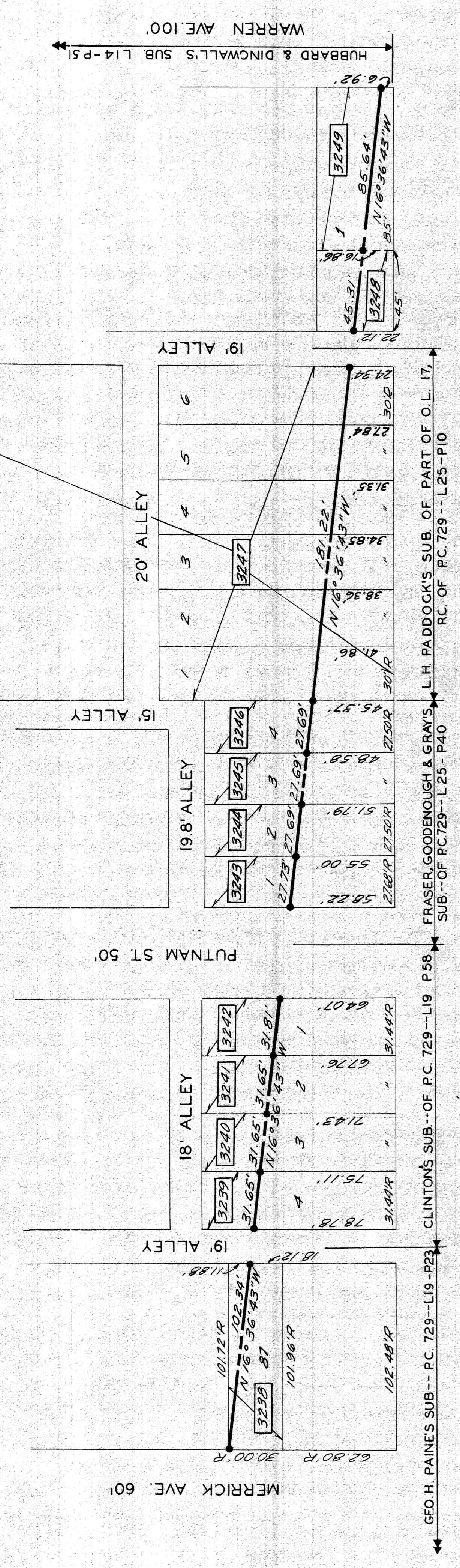
PREPARED BY  
THE CITY OF DETROIT  
IN COOPERATION WITH  
THE WAYNE COUNTY ROAD COMMISSION

Work this sheet with sheet #507

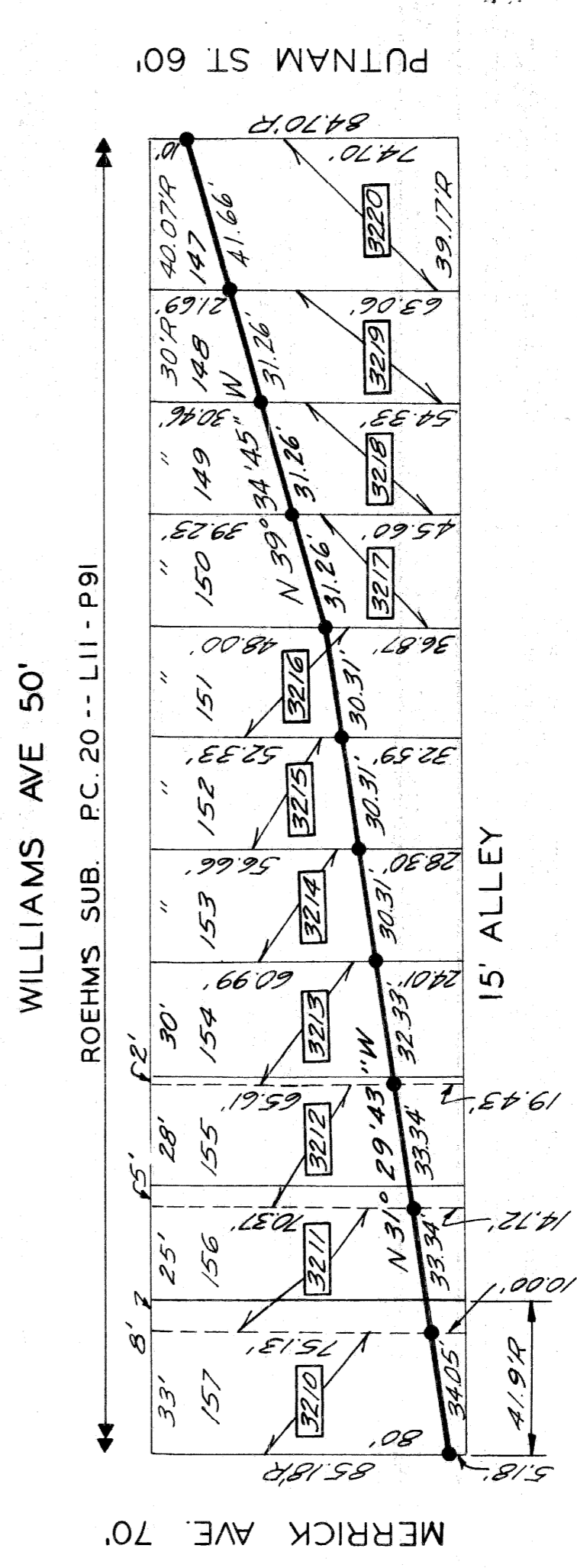
I-96 JEFFRIES FREEWAY  
R.O.W.  
FORD FREEWAY TO MERRICK

FILE NO.	PROJECT	PARCEL SHEET	SHEET
R 82123K	Jeffries Freeway	82123K	512

STATE	MICH.	PROJ. NO.	578	SHEET NO.	513
COUNTY	WAYNE	CITY	Detroit	TOTAL SHEETS	513
ROUTE	2223K	PREPARED BY	W. J. KNOX		
STATE	MICH.	PROJ. NO.	578	SHEET NO.	513
COUNTY	WAYNE	CITY	Detroit	TOTAL SHEETS	513
ROUTE	2223K	PREPARED BY	W. J. KNOX		



FRASER, GOODENOUGH & GRAY'S SUB.--OF P.C. 729--L25- P40  
 L. H. PADDOCK'S SUB. OF PART OF O. L. 17.  
 RC. OF P.C. 729--L25-P10  
 CLINTON'S SUB.--OF P.C. 729--L19- P58  
 GEO. H. PAINES SUB.-- P.C. 729--L19-P23  
 MAYBURY GRAND AVE. 60'



Work this sheet with sheet # 508

I-96 JEFFRIES FREEWAY  
 R.O.W.  
 MERRICK TO WARREN

PREPARED BY	THE CITY OF DETROIT
IN COOPERATION WITH	THE WAYNE COUNTY ROAD COMMISSION
DATE APPR.	2-17-66 [C.S.R.]
REVISIONS	
ADDED Parcel Dimensions	7-14-66 C.S.R.
CORRECTED Parcel Dimensions	3-10-66 C.S.R.
FINAL R.O.W.	

FILE NO.	8223K	SHEET	513
DATE	8-22-51	PROJECT	

PLANS PREPARED BY  
 CITY OF DETROIT  
 DEPARTMENT OF PUBLIC WORKS  
 CITY ENGINEERS OFFICE  
 WILLIAM H. HARRIS AND ASSOCIATES  
 ENGINEERS

APPROVED  
 R. PLATER  
 CHECKED BY  
 T. J. KNOX  
 DRAWN BY  
 W. J. KNOX