

SQUAD R. E. ROUSH

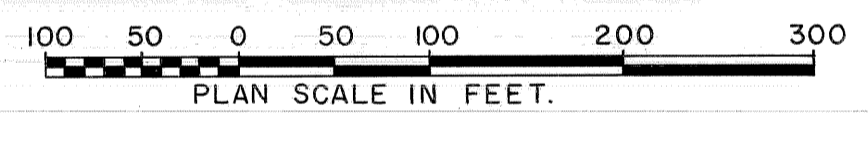
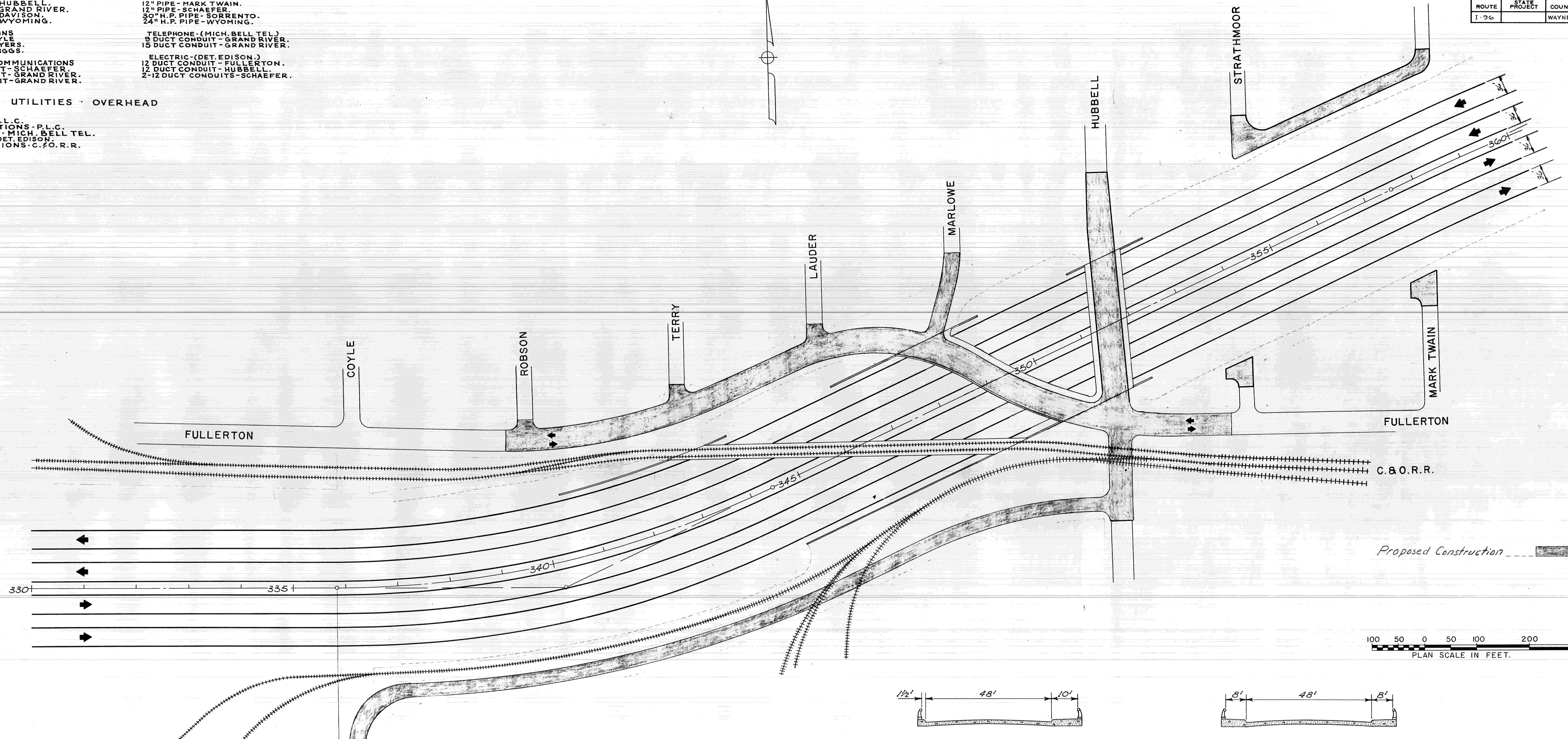
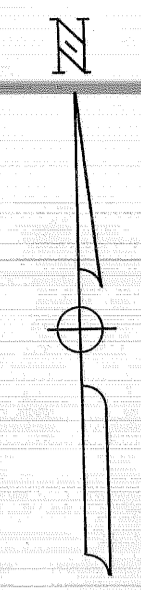
UTILITIES - UNDERGROUND

- | | |
|--------------------------------------|------------------------------------|
| SEWERS | GAS (MICH. COND. GAS.) |
| 51" 6" CYL. - FULLERTON. | 12" PIPE - FULLERTON. |
| 12" 8" CYL. - HUBBELL. | 12" PIPE - MARK TWAIN. |
| 51" 3" CYL. - GRAND RIVER. | 12" PIPE - SCHAEFER. |
| 41" 6" CYL. - DAVISON. | 30" H.P. PIPE - SORRENTO. |
| 71" 6" CYL. - WYOMING. | 24" H.P. PIPE - WYOMING. |
| WATER MAINS | TELEPHONE (MICH. BELL TEL.) |
| 72" MAIN - COYLE. | 9 DUCT CONDUIT - GRAND RIVER. |
| 48" MAIN - MEYERS. | 15 DUCT CONDUIT - GRAND RIVER. |
| 12" MAIN - GRIGGS. | ELECTRIC (DET. EDISON) |
| LIGHTING & COMMUNICATIONS | 12 DUCT CONDUIT - FULLERTON. |
| P.L.C. CONDUIT - SCHAEFER. | 12 DUCT CONDUIT - HUBBELL. |
| P.L.C. CONDUIT - GRAND RIVER. | 2-12 DUCT CONDUITS - SCHAEFER. |
| COMM. CONDUIT - GRAND RIVER. | |

UTILITIES - OVERHEAD

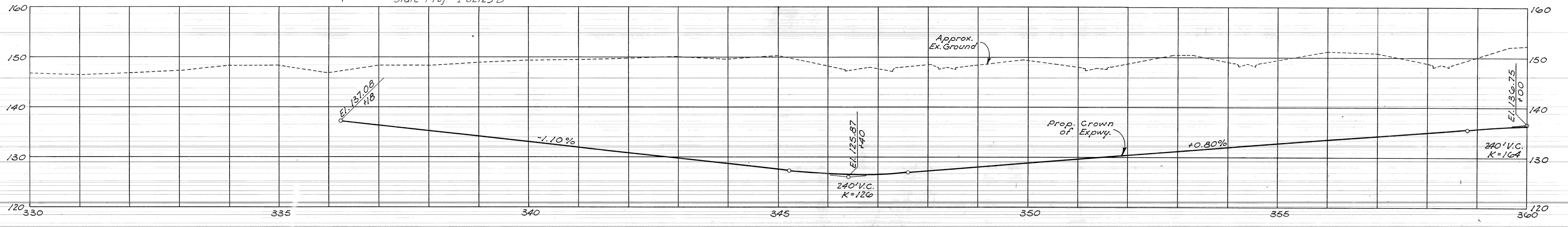
- LIGHTING - P.L.C.
 COMMUNICATIONS - P.L.C.
 TELEPHONE - MICH. BELL TEL.
 ELECTRIC - DET. EDISON.
 COMMUNICATIONS - C. & O. R.R.

D. P. R. DIV. NO.	STATE	PROJ. NO.	FISCAL YEAR	SHEET NO.	TOTAL SHEETS
4	MICH.			5	
ROUTE	STATE PROJECT	COUNTY	CITY	SHEET NO.	TOTAL SHEETS
I-96		WAYNE	DETROIT		

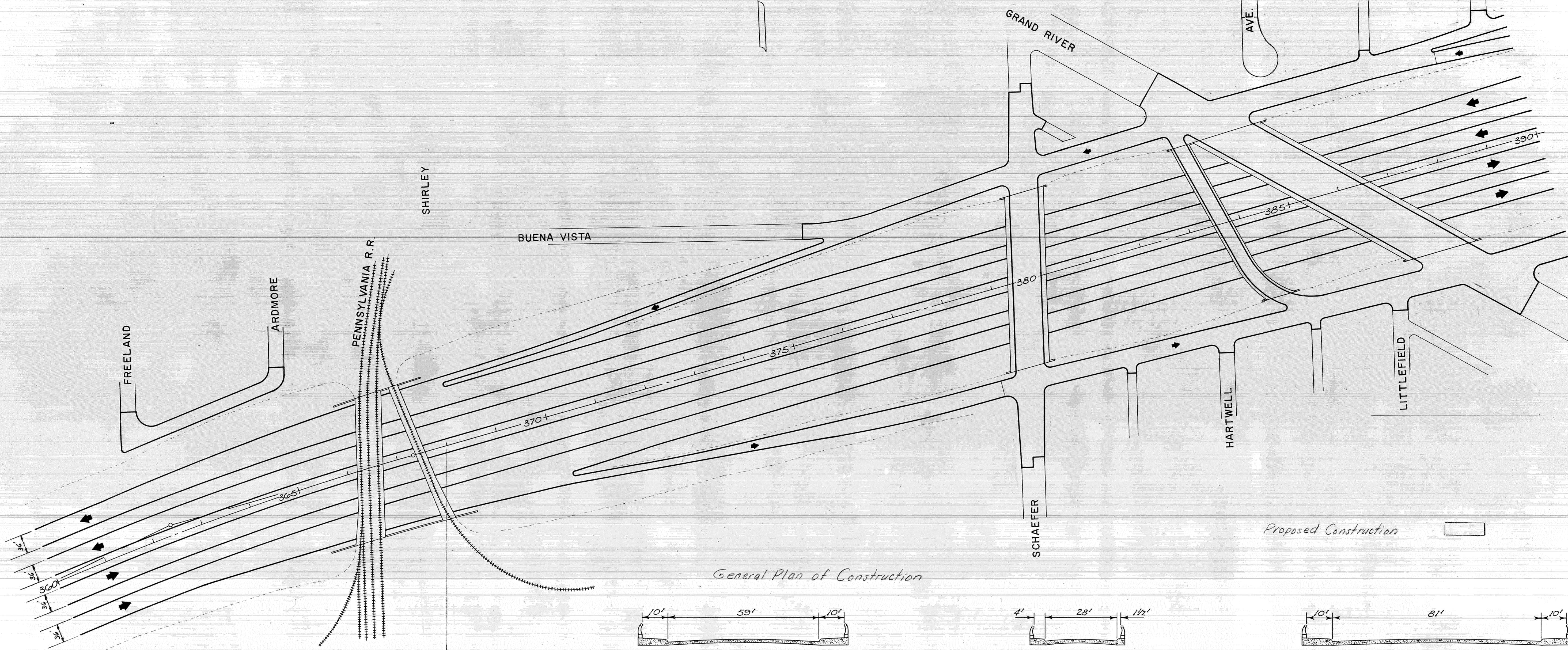


General Plan of Construction

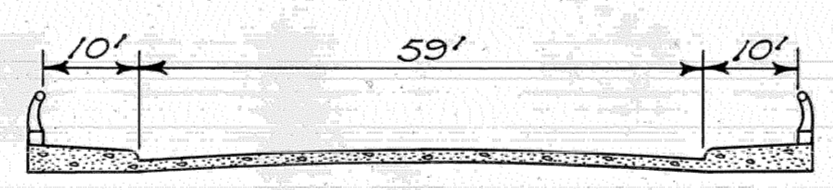
Mich. Proj. 1-11-96-4 () Part 1 Begins
 Opposite Sta. 33+18.28 Constr. @ I-96
 State Proj. I 82123 D



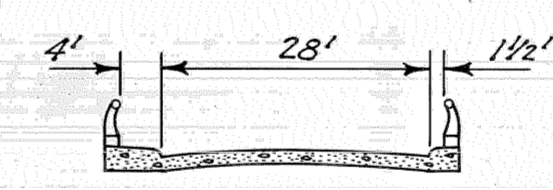
S.P. DIV. NO.	STATE	PROJ. NO.	FISCAL YEAR	SHEET NO.	TOTAL SHEETS
4	MICH.			6	6
ROUTE	STATE PROJECT	COUNTY	CITY	SHEET NO.	TOTAL SHEETS
I-96		WAYNE	DETROIT		



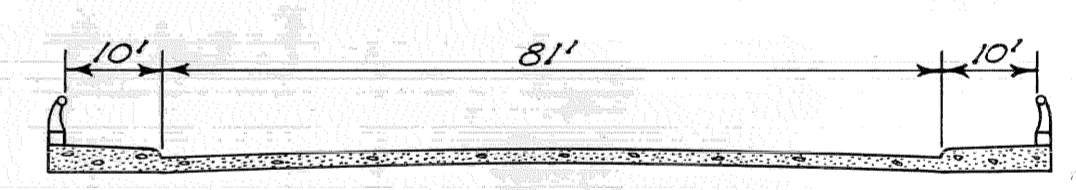
General Plan of Construction



SCHAEFER



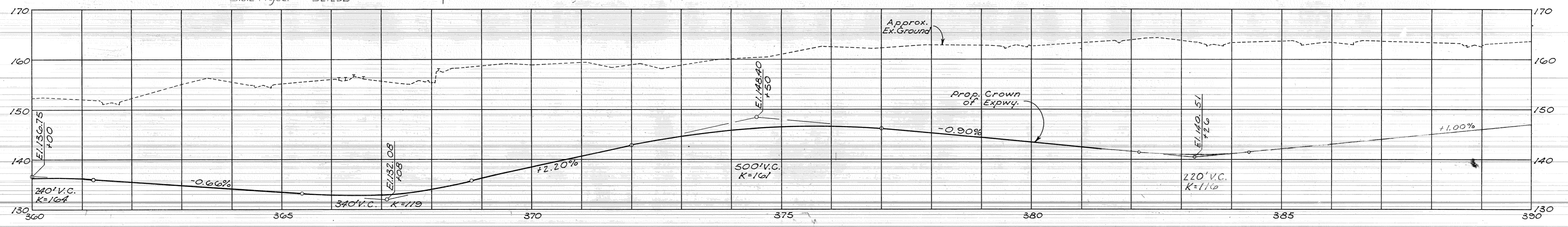
GRAND RIVER U-TURN



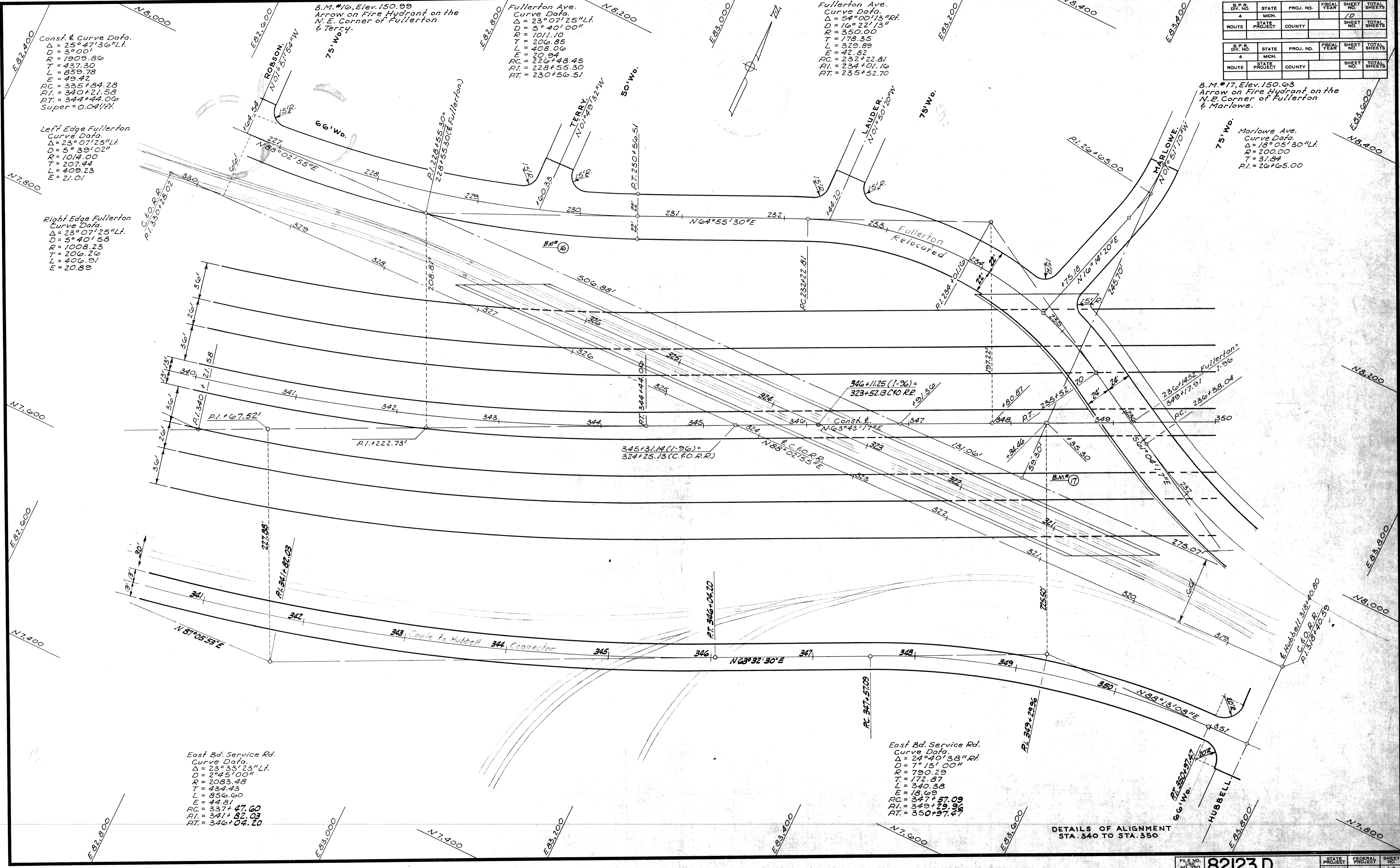
GRAND RIVER

Proposed Construction

Mich. Proj. S-41-96-4C Part I Ends
Opp. Sta. 368+00 Constr. E I-96
State Project 82123D



SQUAD R. E. ROUSH



Const. & Curve Data.
 $\Delta = 25^\circ 47' 36''$ Lt.
 $D = 39^\circ 00'$
 $R = 1909.86$
 $T = 437.30$
 $L = 859.78$
 $E = 49.42$
 $PC = 335+84.28$
 $PT = 340+21.58$
 $PI = 344+44.09$
 $Super = 0.0417\%$

Left Edge Fullerton
 Curve Data.
 $\Delta = 23^\circ 07' 25''$ Lt.
 $D = 5^\circ 39' 02''$
 $R = 1014.00$
 $T = 207.44$
 $L = 409.23$
 $E = 21.01$

Right Edge Fullerton
 Curve Data.
 $\Delta = 23^\circ 07' 25''$ Lt.
 $D = 5^\circ 40' 15''$
 $R = 1008.23$
 $T = 206.26$
 $L = 406.91$
 $E = 20.89$

East Bd. Service Rd.
 Curve Data.
 $\Delta = 23^\circ 33' 23''$ Lt.
 $D = 2^\circ 45' 00''$
 $R = 2083.48$
 $T = 484.43$
 $L = 856.60$
 $E = 44.81$
 $PC = 337+47.60$
 $PT = 341+82.03$
 $PI = 346+04.20$

East Bd. Service Rd.
 Curve Data.
 $\Delta = 24^\circ 40' 38''$ Rt.
 $D = 7^\circ 15' 00''$
 $R = 790.29$
 $T = 172.87$
 $L = 340.38$
 $E = 18.68$
 $PC = 347+57.09$
 $PT = 349+29.96$
 $PI = 350+97.47$

B.M. #16, Elev. 150.99
 Arrow on Fire Hydrant on the
 N.E. Corner of Fullerton
 & Terry.

Fullerton Ave.
 Curve Data.
 $\Delta = 23^\circ 07' 25''$ Lt.
 $D = 5^\circ 40' 00''$
 $R = 1011.10$
 $T = 206.85$
 $L = 408.06$
 $E = 20.94$
 $PC = 226+48.45$
 $PT = 228+55.30$
 $PI = 230+56.51$

Fullerton Ave.
 Curve Data.
 $\Delta = 54^\circ 00' 13''$ Rt.
 $D = 16^\circ 22' 13''$
 $R = 350.00$
 $T = 178.35$
 $L = 329.89$
 $E = 42.82$
 $PC = 232+22.81$
 $PT = 234+01.16$
 $PI = 235+52.70$

B.M. #17, Elev. 150.63
 Arrow on Fire Hydrant on the
 N.E. Corner of Fullerton
 & Marlowe.

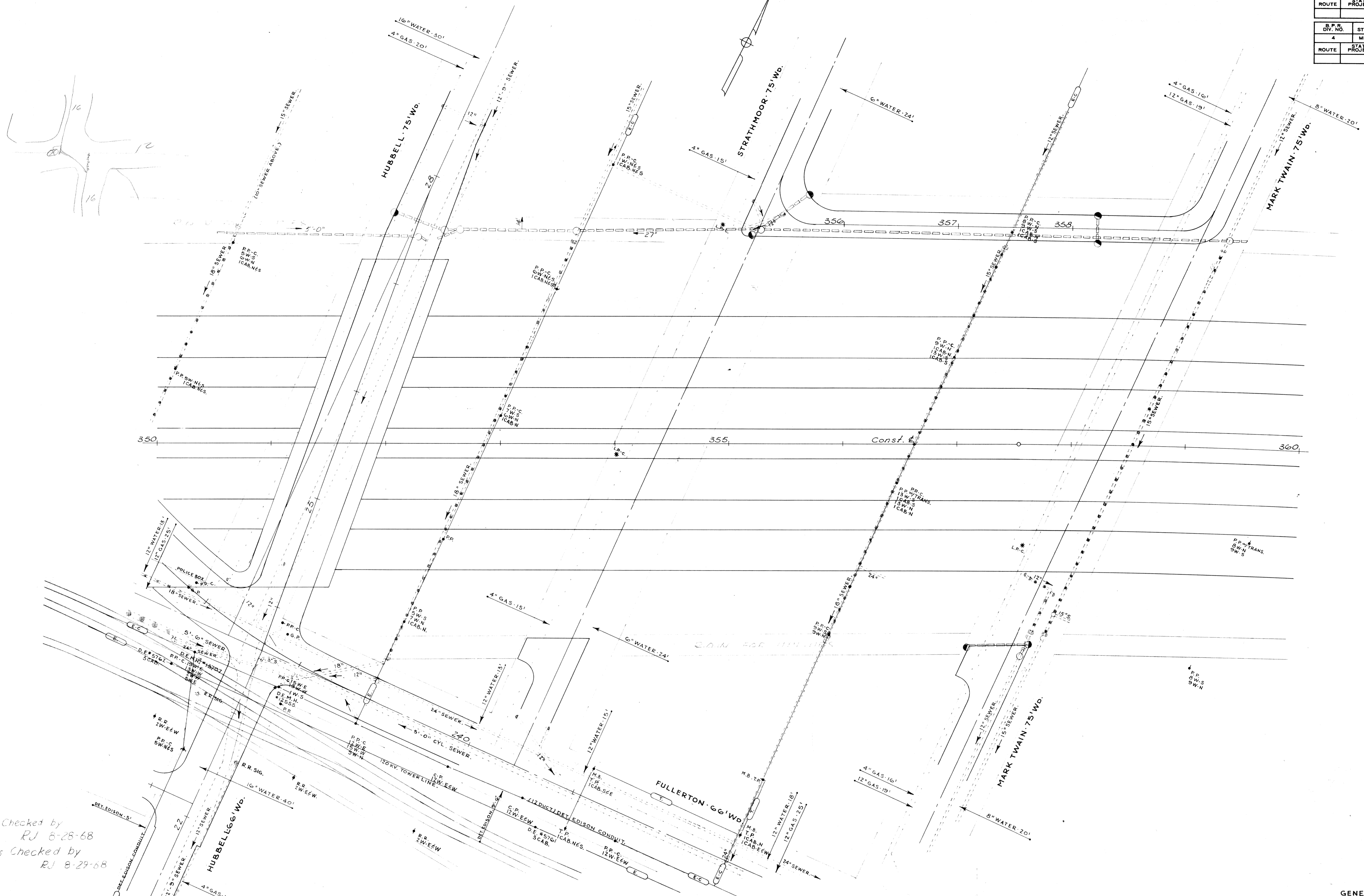
Marlowe Ave.
 Curve Data.
 $\Delta = 18^\circ 05' 30''$ Lt.
 $R = 200.00$
 $T = 31.84$
 $PI = 26+65.00$

DIV. NO.	STATE	PROJ. NO.	FISCAL YEAR	SHEET NO.	TOTAL SHEETS
4	MICH.			12	
ROUTE	PROJECT	COUNTY		SHEET NO.	TOTAL SHEETS

DETAILS OF ALIGNMENT
 STA. 340 TO STA. 350

Road Squad - Roush

B.P.S. DIV. NO.	STATE	PROJ. NO.	FISCAL YEAR	SHEET NO.	TOTAL SHEETS
4	MICH.			30	
ROUTE	STATE PROJECT	COUNTY		SHEET NO.	TOTAL SHEETS
B.P.S. DIV. NO.	STATE	PROJ. NO.	FISCAL YEAR	SHEET NO.	TOTAL SHEETS
4	MICH.			30	
ROUTE	STATE PROJECT	COUNTY		SHEET NO.	TOTAL SHEETS



Sewers Checked by RJ 8-28-68
 Utilities Checked by RJ 8-29-68

GENERAL UTILITIES
 STA. 350 TO STA. 360

FILE NO.	82123 D	STATE PROJECT	FEDERAL PROJECT	SHEET NO.
NO. 300		82123		30

SQUAD R. E. ROUSH

B.M. #18, Elev. 147.36
City B.M. #83-252B, Elev. 147.367
Located on the N.E. Corner of
Hubbell & Fullerton.

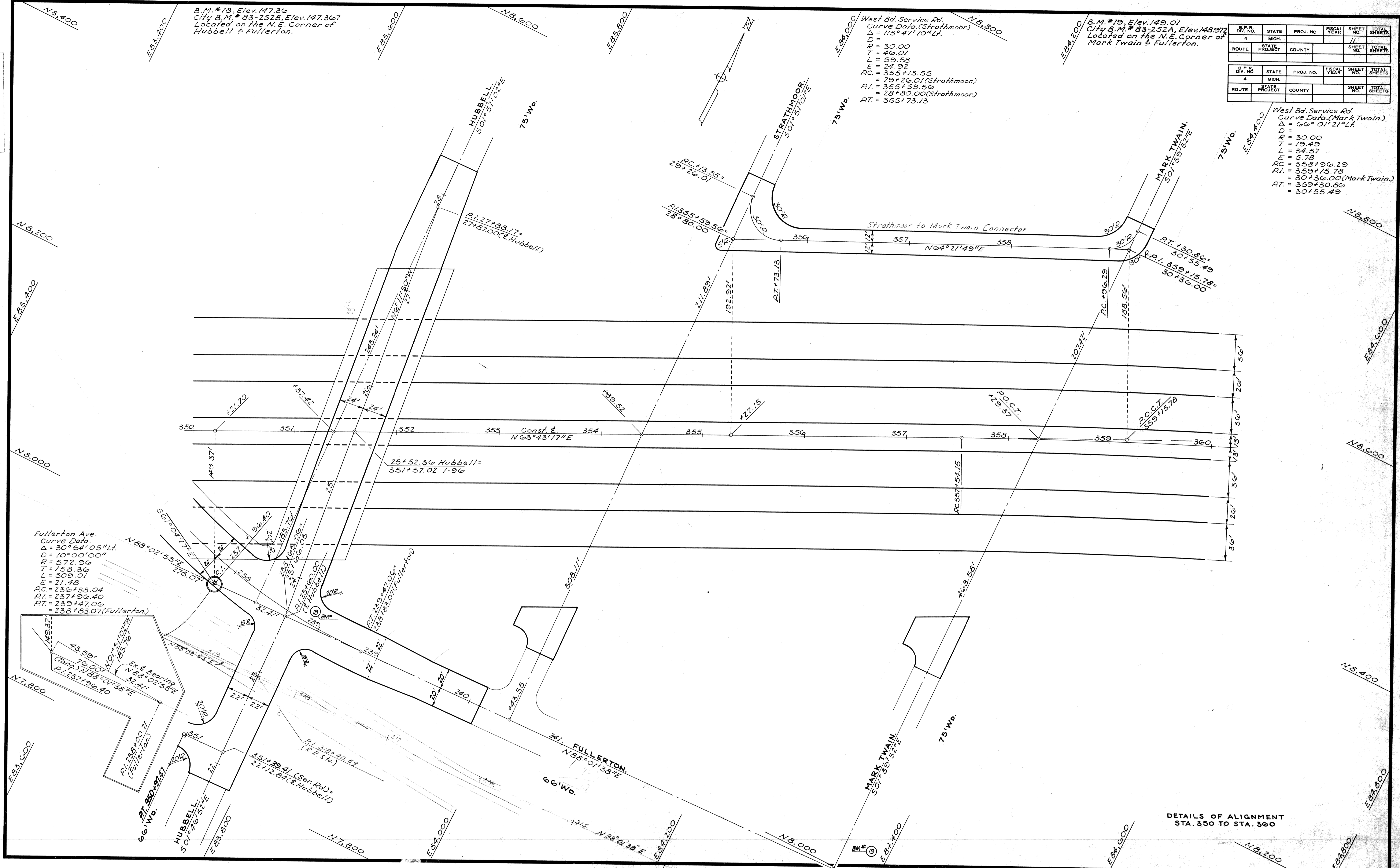
West Bd. Service Rd.
Curve Data (Strathmoor)
 $\Delta = 113^\circ 47' 10''$ Lt.
 $D = 30.00$
 $T = 46.01$
 $L = 59.58$
 $E = 24.92$
 $PC = 355 + 13.55$
 $PT = 29 + 26.01$ (Strathmoor)
 $PI = 355 + 59.58$
 $RT = 28 + 80.00$ (Strathmoor)
 $RT = 355 + 73.13$

B.M. #19, Elev. 149.01
City B.M. #83-252A, Elev. 148.972
Located on the N.E. Corner of
Mark Twain & Fullerton.

B.P.R. DIV. NO.	STATE	PROJ. NO.	FISCAL YEAR	SHEET NO.	TOTAL SHEETS
4	MICH.			11	
ROUTE	STATE PROJECT	COUNTY		SHEET NO.	TOTAL SHEETS

B.P.R. DIV. NO.	STATE	PROJ. NO.	FISCAL YEAR	SHEET NO.	TOTAL SHEETS
4	MICH.			11	
ROUTE	STATE PROJECT	COUNTY		SHEET NO.	TOTAL SHEETS

West Bd. Service Rd.
Curve Data (Mark Twain)
 $\Delta = 66^\circ 01' 21''$ Lt.
 $D = 30.00$
 $T = 19.49$
 $L = 34.57$
 $E = 5.78$
 $PC = 358 + 96.29$
 $PT = 359 + 15.78$
 $PI = 30 + 36.00$ (Mark Twain)
 $RT = 359 + 30.86$
 $RT = 30 + 55.49$

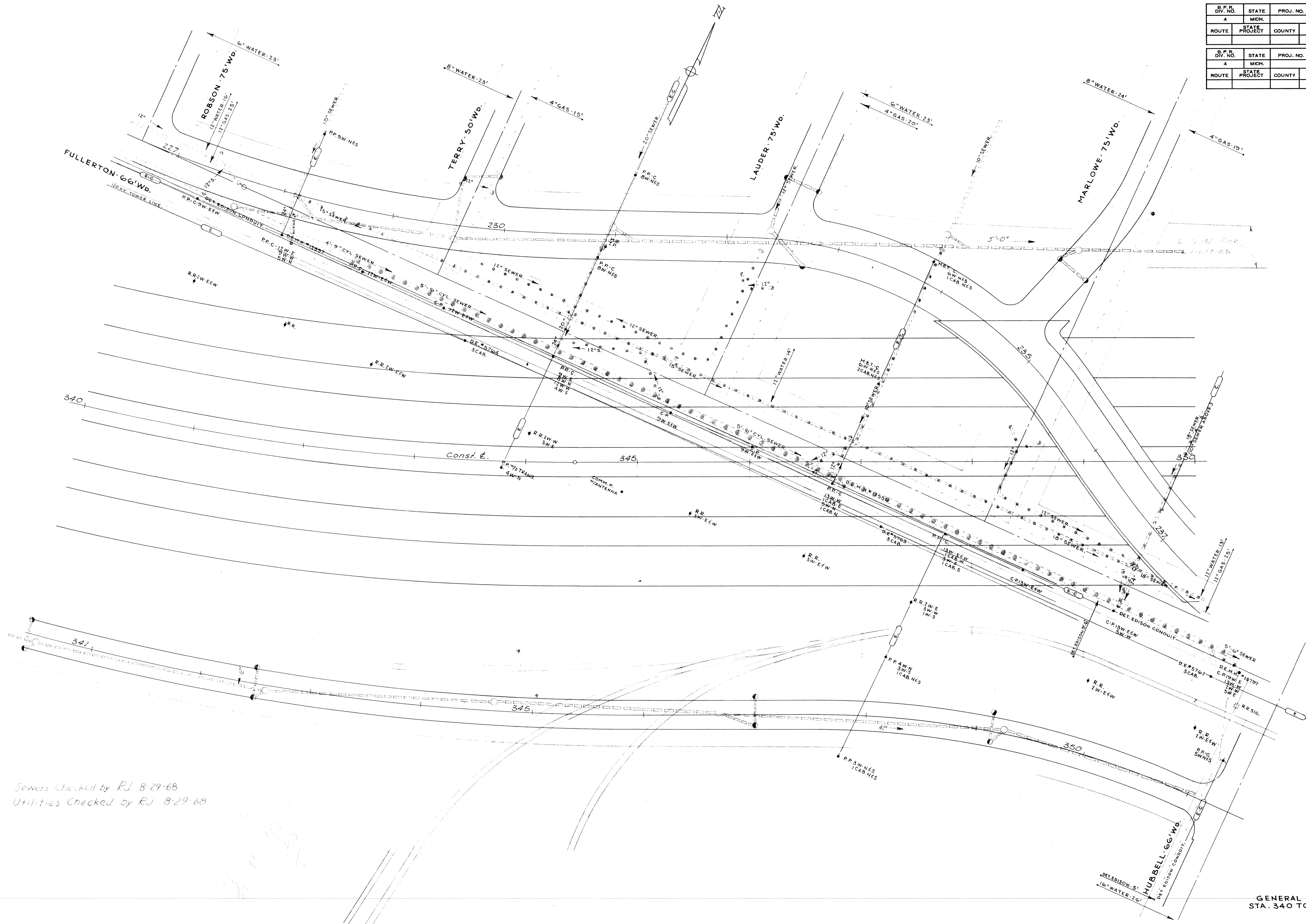


DETAILS OF ALIGNMENT
STA. 350 TO STA. 360

Road Squad - Roush

B.P.R. DIV. NO.	STATE	PROJ. NO.	FISCAL YEAR	SHEET NO.	TOTAL SHEETS
4	MICH.			29	
ROUTE	STATE PROJECT	COUNTY		SHEET NO.	TOTAL SHEETS

B.P.R. DIV. NO.	STATE	PROJ. NO.	FISCAL YEAR	SHEET NO.	TOTAL SHEETS
4	MICH.				
ROUTE	STATE PROJECT	COUNTY		SHEET NO.	TOTAL SHEETS



Sewers Checked by RJ 8-29-68
 Utilities Checked by RJ 8-29-68

GENERAL UTILITIES
 STA. 340 TO STA. 350

FILE NO. USE NO. 350 STENCIL	82123D	STATE PROJECT	FEDERAL PROJECT	SHEET NO.
		B2133		29