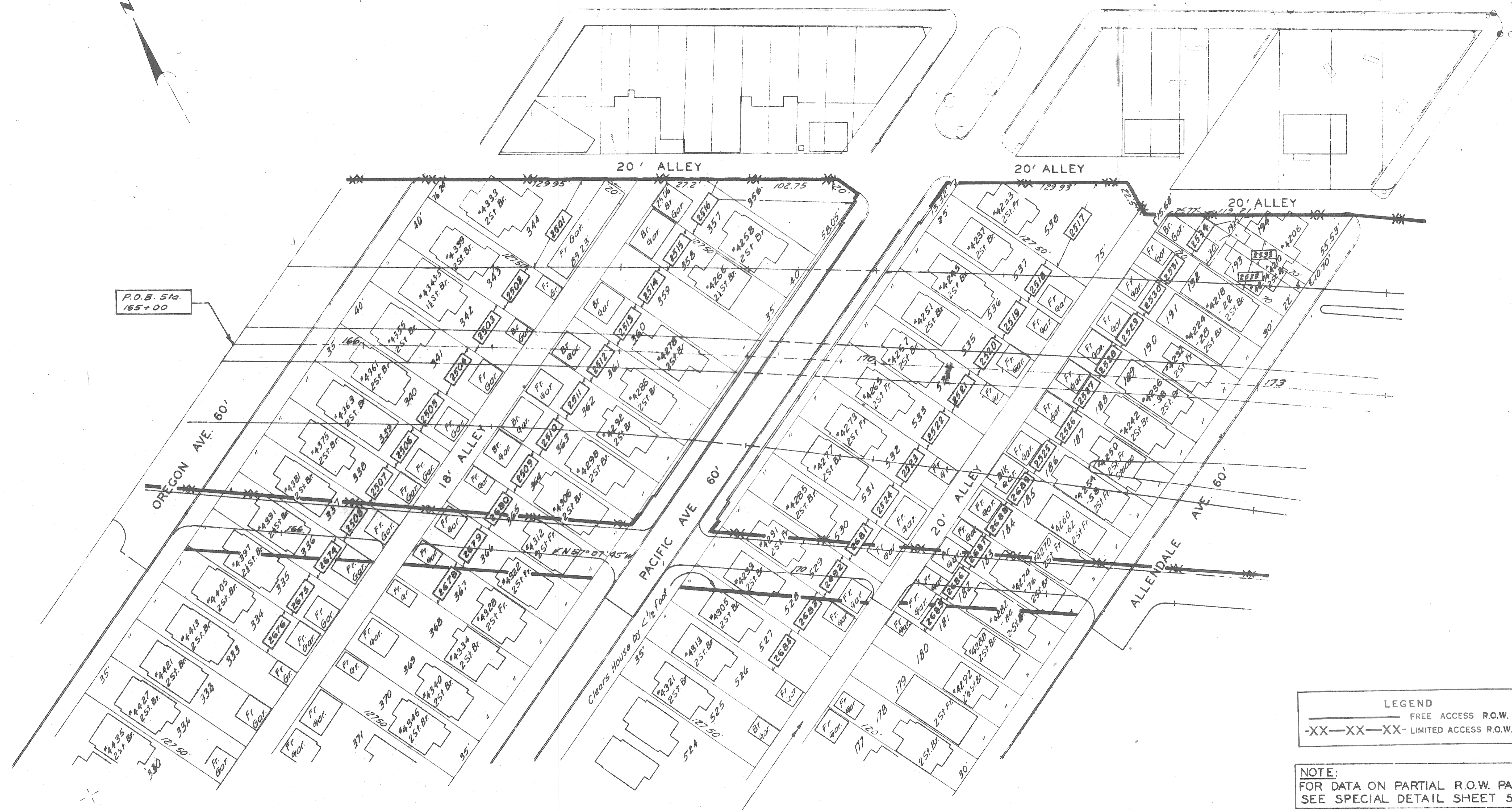
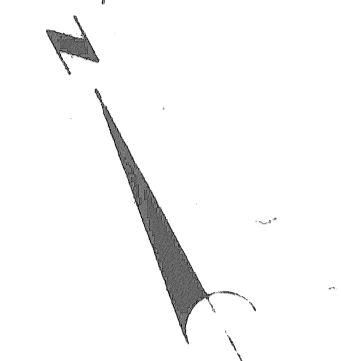


D.P.R. DIV. NO.	STATE	PROJ. NO.	FISCAL YEAR	SHEET NO.	TOTAL SHEETS
4	MICH.				
ROUTE	STATE PROJECT	COUNTY	CITY	SHEET NO.	TOTAL SHEETS
I-96	R2123J	Wayne	Detroit	503	
D.P.R. DIV. NO.	STATE	PROJ. NO.	FISCAL YEAR	SHEET NO.	TOTAL SHEETS
4	MICH.				
ROUTE	STATE PROJECT	COUNTY	CITY	SHEET NO.	TOTAL SHEETS

GRAND RIVER AVE. 100'



**LEGEND**  
 ———— FREE ACCESS R.O.W.  
 -XX-XX-XX- LIMITED ACCESS R.O.W.

**NOTE:**  
 FOR DATA ON PARTIAL R.O.W. PARCELS  
 SEE SPECIAL DETAIL SHEET 508

HOLDEN AND MURRAY'S NORTHWESTERN SUB L 28 - P.10

ALLENDALE SUB'N L. 23 - P.70

② Moved N. ROW Line to Alley Line, Pacific to Alley E. of Pacific	CSR		
① Added Note, Corrected Align. & Number	8-30-66 CSR		
NO.	REVISIONS	DATE	APPR.
	FINAL R.O.W.	7-21-66	CSR

PREPARED BY  
 THE CITY OF DETROIT  
 IN COOPERATION WITH  
 THE WAYNE COUNTY ROAD COMMISSION

I-96 JEFFRIES FREEWAY  
 R.O.W.  
 OREGON TO ALLENDALE

GRAND RIVER AVE. 100'

S.P.R. DIV. NO.	STATE	PROJ. NO.	FISCAL YEAR	SHEET NO.	TOTAL SHEETS
4	MICH.				
ROUTE	STATE PROJECT	COUNTY	CITY	SHEET NO.	TOTAL SHEETS
I-96	R82123J	Wayne	Detroit	504	
S.P.R. DIV. NO.	STATE	PROJ. NO.	FISCAL YEAR	SHEET NO.	TOTAL SHEETS
4	MICH.				
ROUTE	STATE PROJECT	COUNTY	CITY	SHEET NO.	TOTAL SHEETS



**LEGEND**  
 ——— FREE ACCESS R.O.W.  
 -XX-XX-XX- LIMITED ACCESS R.O.W.

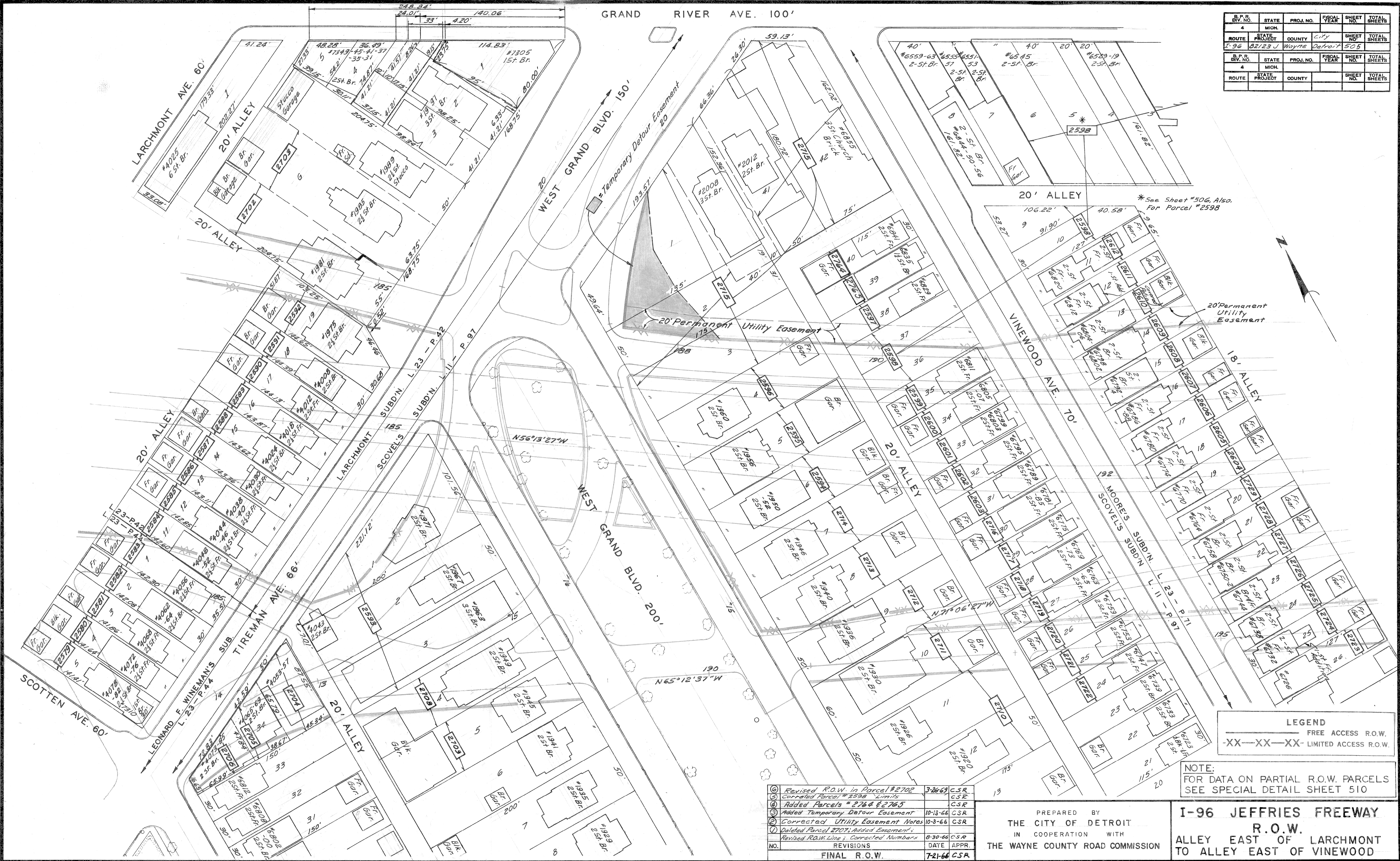
**NOTE:**  
 FOR DATA ON PARTIAL R.O.W PARCELS  
 SEE SPECIAL DETAIL SHEET 509

①	Moved N.ROW Line to Alley Line, Alleendale to Larchmont	CSR	
②	Added Alley Dimensions at Seebaldt	12-19-66 C.S.R.	
③	Added Parcel # 2532A	12-19-66 C.S.R.	
④	Revised Alignment & ROW Line	8-30-66 CSR	
No.	REVISIONS	DATE	AUTH
	FINAL R.O.W.	7-21-66	CSR

PREPARED BY  
 THE CITY OF DETROIT  
 IN COOPERATION WITH  
 THE WAYNE COUNTY ROAD COMMISSION

**I-96 JEFFRIES FREEWAY  
 R.O.W.  
 ALLENDALE TO ALLEY  
 EAST OF LARCHMONT**

B.P.R. DIV. NO.	STATE	PROJ. NO.	FISCAL YEAR	SHEET NO.	TOTAL SHEETS
4	MICH.				
ROUTE	STATE PROJECT	COUNTY	CITY	SHEET NO.	TOTAL SHEETS
I-96	82/23 J	Wayne	Detroit	505	
B.P.R. DIV. NO.	STATE	PROJ. NO.	FISCAL YEAR	SHEET NO.	TOTAL SHEETS
4	MICH.				
ROUTE	STATE PROJECT	COUNTY	CITY	SHEET NO.	TOTAL SHEETS



**LEGEND**  
 --- FREE ACCESS R.O.W.  
 -XX-XX-XX- LIMITED ACCESS R.O.W.

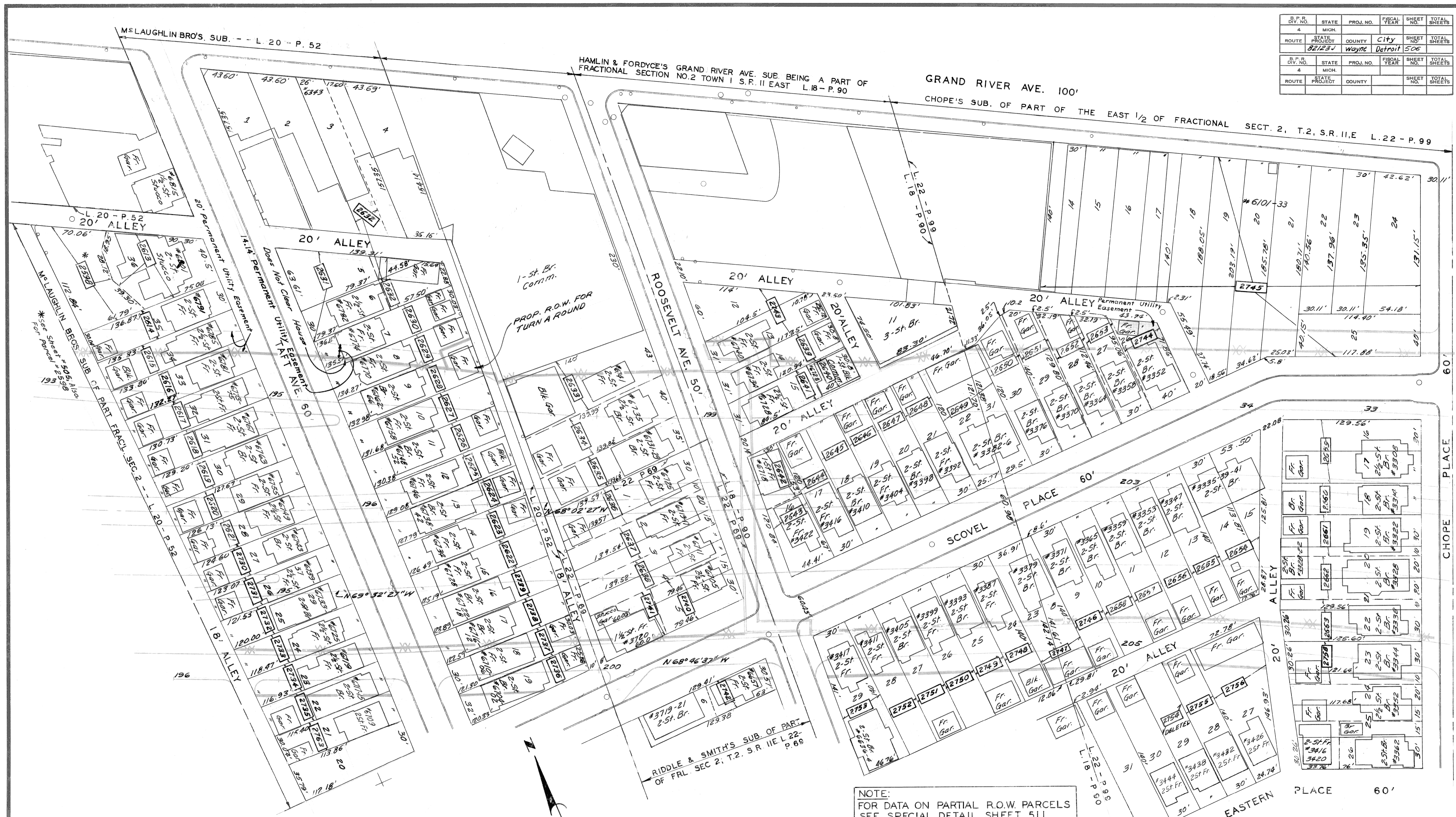
**NOTE:**  
 FOR DATA ON PARTIAL R.O.W. PARCELS  
 SEE SPECIAL DETAIL SHEET 510

Revised R.O.W. in Parcel #2702	3-26-63	CSR
Corrected Parcel #2598 Limits		CSR
Added Parcels #2764 & 2765		CSR
Added Temporary Detour Easement	10-13-66	CSR
Corrected Utility Easement Notes	10-3-66	CSR
Deleted Parcel 2707; Added Easement's		
Revised R.O.W. Lines; Corrected Numbers	8-30-66	CSR
REVISIONS	DATE	APPR.
FINAL R.O.W.	7-21-66	CSR

PREPARED BY  
 THE CITY OF DETROIT  
 IN COOPERATION WITH  
 THE WAYNE COUNTY ROAD COMMISSION

**I-96 JEFFRIES FREEWAY  
 R.O.W.  
 ALLEY EAST OF LARCHMONT  
 TO ALLEY EAST OF VINEWOOD**

B.P.R. DIV. NO.	STATE	PROJ. NO.	FISCAL YEAR	SHEET NO.	TOTAL SHEETS
4	MICH.				
ROUTE	STATE PROJECT	COUNTY	CITY	SHEET NO.	TOTAL SHEETS
82123 J	Wayne	Detroit	506		
B.P.R. DIV. NO.	STATE	PROJ. NO.	FISCAL YEAR	SHEET NO.	TOTAL SHEETS
4	MICH.				
ROUTE	STATE PROJECT	COUNTY		SHEET NO.	TOTAL SHEETS



1- St. Br. Comm.  
PROP. R.O.W. FOR TURN A ROUND

NOTE:  
FOR DATA ON PARTIAL R.O.W. PARCELS  
SEE SPECIAL DETAIL SHEET 511

**LEGEND**  
FREE ACCESS R.O.W.  
-XX-XX-XX- LIMITED ACCESS R.O.W.

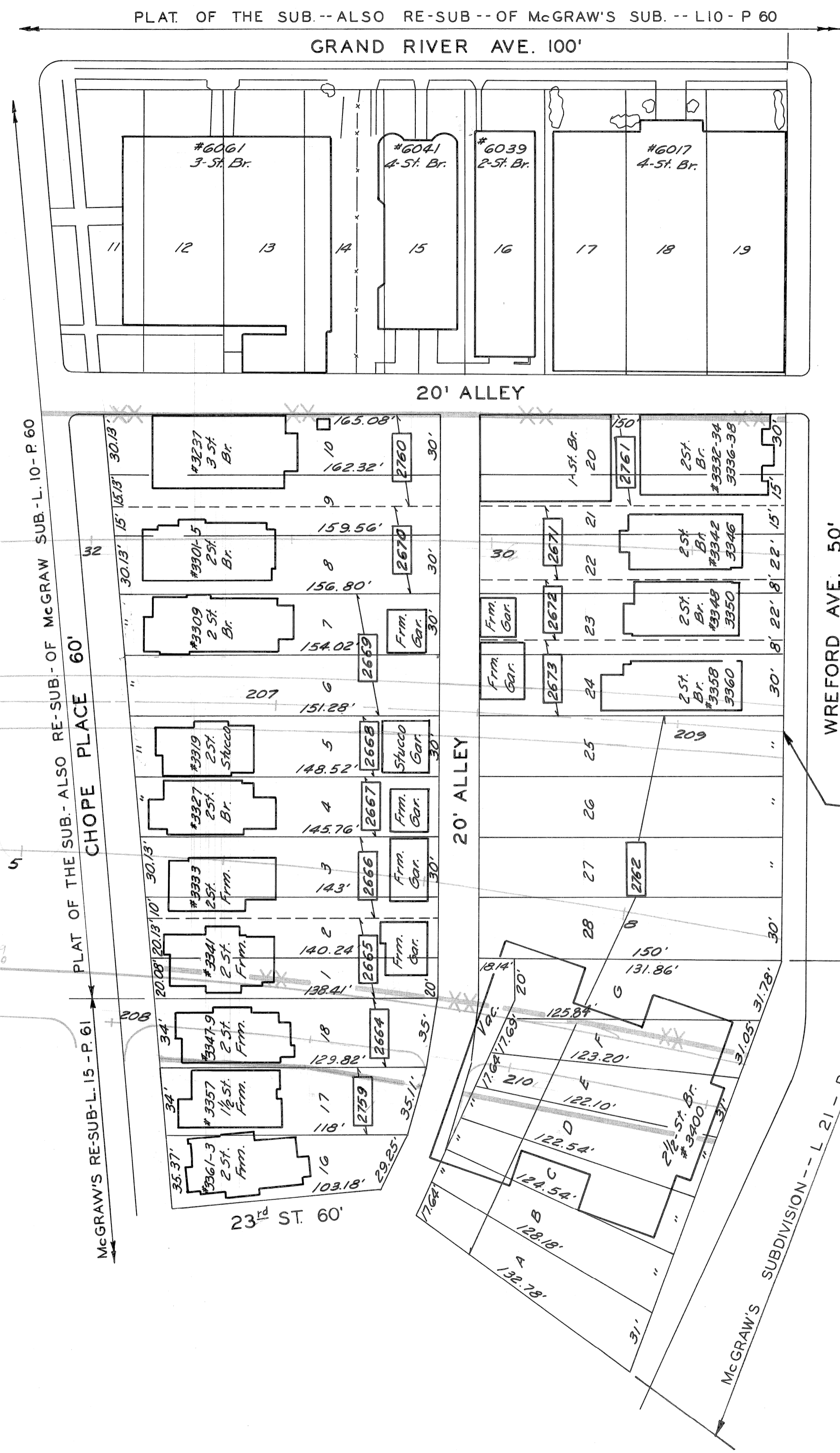
No.	REVISIONS	DATE	APPR.
6	Added Perm. Util. Esmt, E. of Taft	2-17-69	CSR
5	Added Parcel #2754 (Deleted)		CSR
4	Added Permanent Utility Easement	3-14-67	CSR
3	Corrected Limits of Parcel #2745	10-18-66	CSR
<b>FINAL R.O.W.</b>			
		7-21-66	C.S.R.

No.	REVISIONS	DATE	APPR.
2	Deleted Parcel #2754		
1	Corrected Easement Note, Added Dimension and Bldg. Number	10-3-66	CSR
1	Deleted Parcel 2757; Added Easement; Added Note; Corrected Numbers, Corrected Alley Width	8-30-66	CSR
<b>FINAL R.O.W.</b>			
		7-21-66	C.S.R.

PREPARED BY  
THE CITY OF DETROIT  
IN COOPERATION WITH  
THE WAYNE COUNTY ROAD COMMISSION

**I-96 JEFFRIES FREEWAY  
R.O.W.  
ALLEY WEST OF TAFT TO CHOZE PL.**

S.P.R. DIV. NO.	STATE	PROJ. NO.	FISCAL YEAR	SHEET NO.	TOTAL SHEETS
4	MICH.				
ROUTE	STATE PROJECT	COUNTY	CITY	SHEET NO.	TOTAL SHEETS
82123J	Wayne	Detroit		507	



**LEGEND**  
 ———— FREE ACCESS R.O.W.  
 -XX-XX-XX- LIMITED ACCESS R.O.W.

**NOTE:**  
 FOR DATA ON PARTIAL R.O.W. PARCELS  
 SEE SPECIAL DETAIL SHEET 512

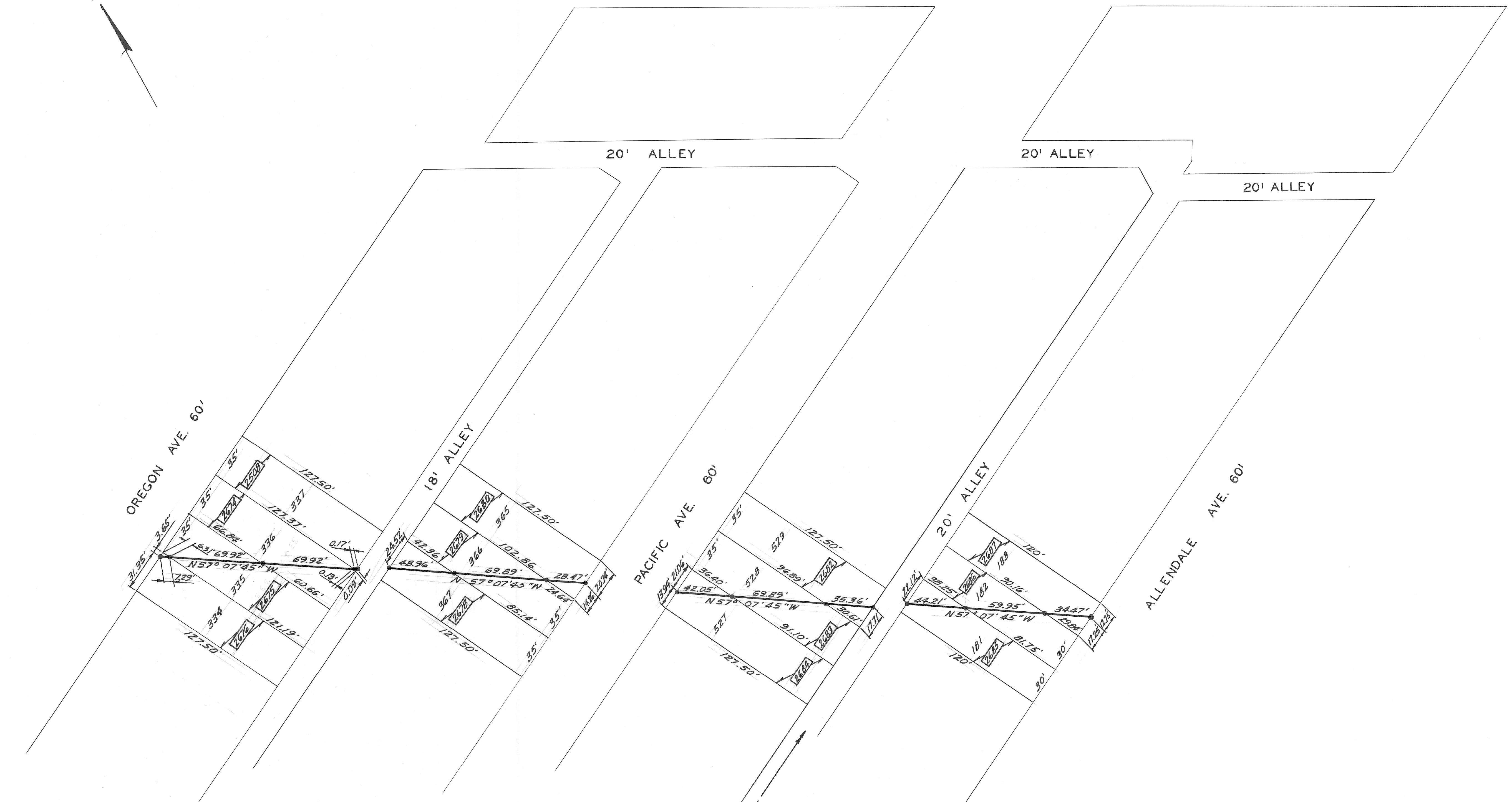
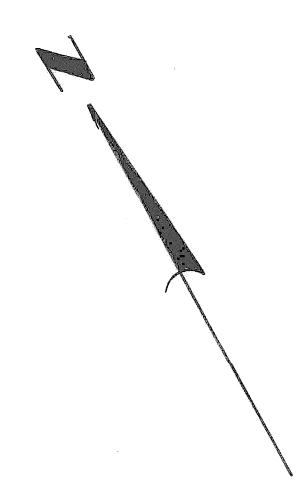
③	Added Plat Title		C.S.R.
②	Changed ROW Line & Removed Note	10-3-66	C.S.R.
①	Added Note	8-30-66	C.S.R.
NO.	REVISIONS	DATE	APPR.
	FINAL R.O.W.	7-21-66	C.S.R.

PREPARED BY  
**THE CITY OF DETROIT**  
 IN COOPERATION WITH  
**THE WAYNE COUNTY ROAD COMMISSION**

**I-96 JEFFRIES FREEWAY  
 R.O.W.  
 CHOZE PLACE TO WREFORD**

B.P.R. DIV. NO.	STATE	PROJ. NO.	FISCAL YEAR	SHEET NO.	TOTAL SHEETS
4	MICH.				
ROUTE	STATE PROJECT	COUNTY	City	SHEET NO.	TOTAL SHEETS
I-96	82123J	Wayne	Detroit	508	
B.P.R. DIV. NO.	STATE	PROJ. NO.	FISCAL YEAR	SHEET NO.	TOTAL SHEETS
4	MICH.				
ROUTE	STATE PROJECT	COUNTY		SHEET NO.	TOTAL SHEETS

GRAND RIVER AVE. 100'



HOLDEN AND MURRAY'S NORTHWESTERN SUB. L. 28 - P. 10

ALLENDALE SUB'N L. 23 - P. 70

Work This Sheet With Sheet # 503

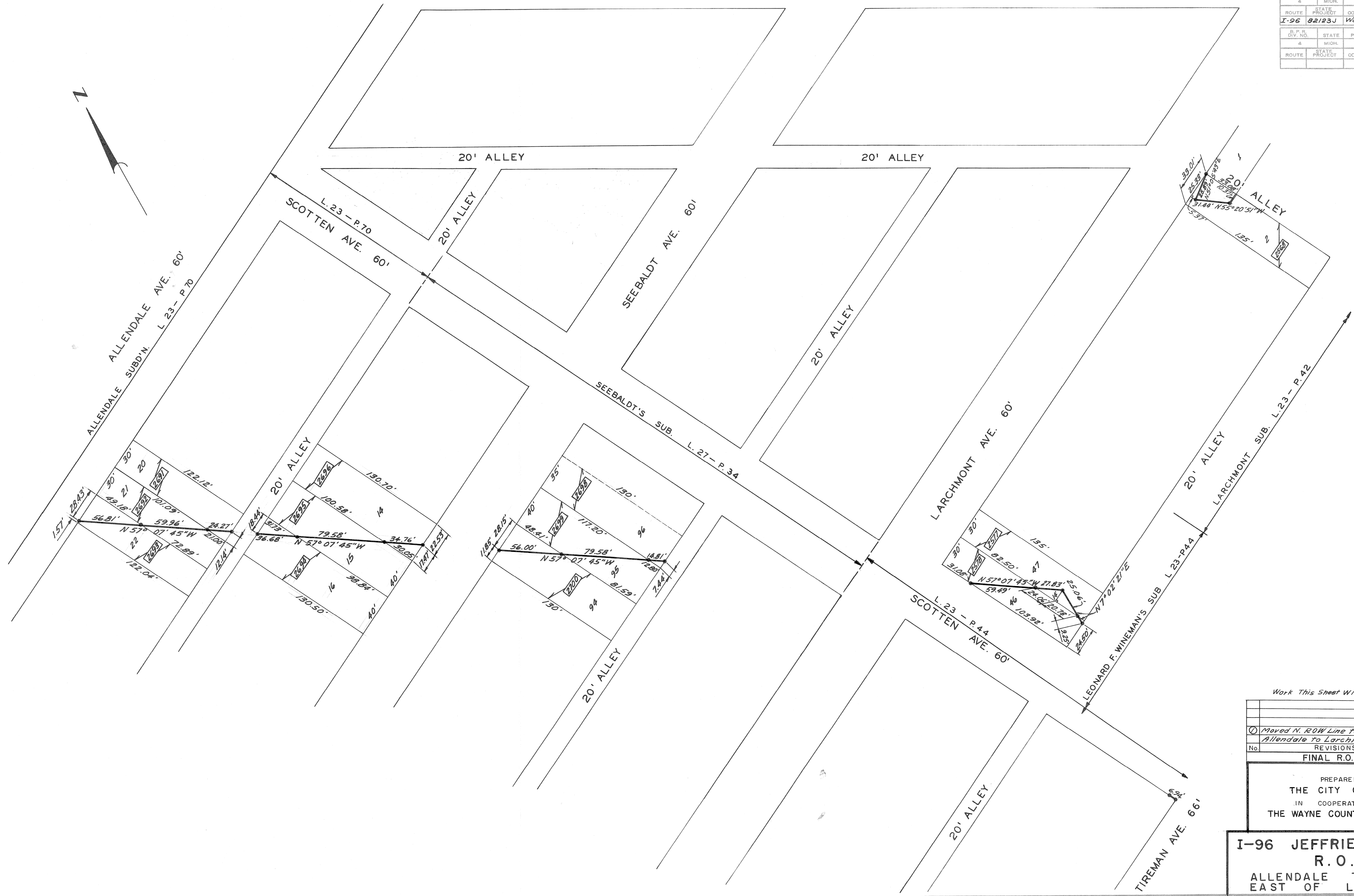
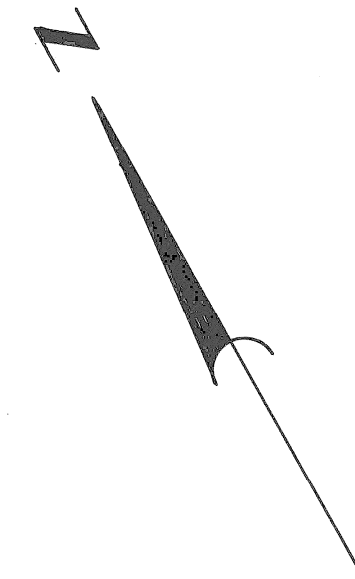
No.	REVISIONS	DATE	AUTH.
1	Moved N. ROW Line to Alley Line, Pacific to Alley E. of Pacific		C.S.R.
	FINAL R.O.W.	7-21-66	C.S.R.

PREPARED BY  
THE CITY OF DETROIT  
IN COOPERATION WITH  
THE WAYNE COUNTY ROAD COMMISSION

I-96 JEFFRIES FREEWAY  
R.O.W.  
OREGON TO ALLENDALE

GRAND RIVER AVE. 100'

B.P.R. DIV. NO.	STATE	PROJ. NO.	FISCAL YEAR	SHEET NO.	TOTAL SHEETS
4	MICH.				
ROUTE	STATE PROJECT	COUNTY	CITY	SHEET NO.	TOTAL SHEETS
I-96	82123J	Wayne	Detroit	509	
B.P.R. DIV. NO.	STATE	PROJ. NO.	FISCAL YEAR	SHEET NO.	TOTAL SHEETS
4	MICH.				
ROUTE	STATE PROJECT	COUNTY	CITY	SHEET NO.	TOTAL SHEETS



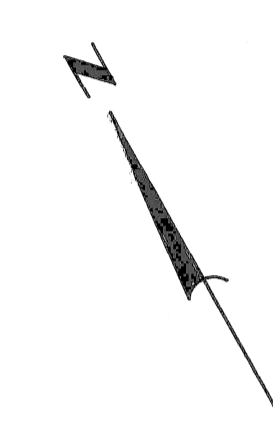
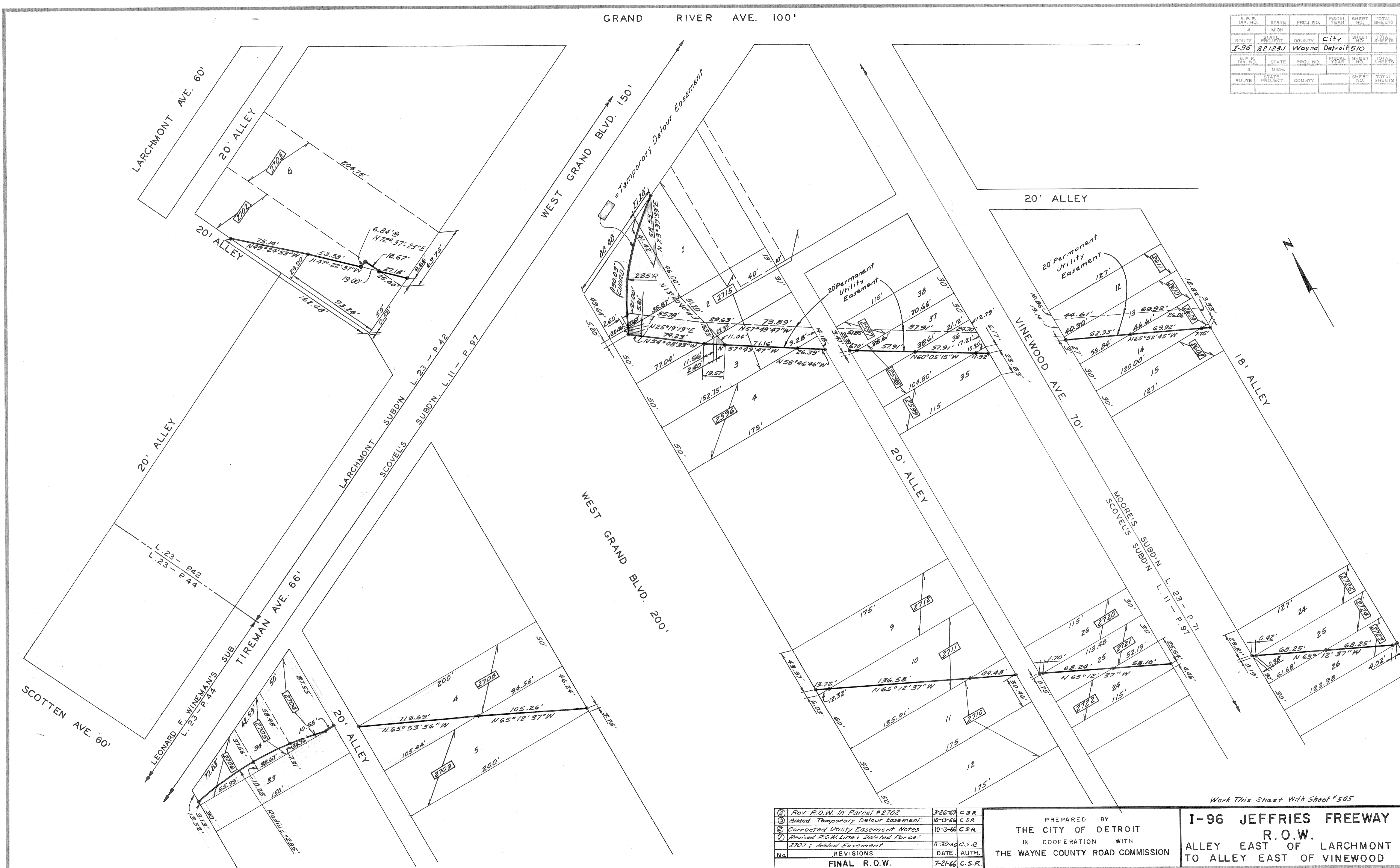
Work This Sheet With Sheet #304

REVISIONS	DATE	AUTH.
① Moved N. ROW Line to Alley Line, Alleendale to Larchmont		C.S.R.
FINAL R.O.W.	7-21-66	C.S.R.

PREPARED BY  
 THE CITY OF DETROIT  
 IN COOPERATION WITH  
 THE WAYNE COUNTY ROAD COMMISSION

**I-96 JEFFRIES FREEWAY  
 R.O.W.  
 ALLENDALE TO ALLEY  
 EAST OF LARCHMONT**

B.P.R. DIV. NO.	STATE	PROJ. NO.	FISCAL YEAR	SHEET NO.	TOTAL SHEETS
4	MICH.				
ROUTE	STATE PROJECT	COUNTY	CITY	SHEET NO.	TOTAL SHEETS
I-96	82123J	Wayne	Detroit	510	
B.P.R. DIV. NO.	STATE	PROJ. NO.	FISCAL YEAR	SHEET NO.	TOTAL SHEETS
4	MICH.				
ROUTE	STATE PROJECT	COUNTY		SHEET NO.	TOTAL SHEETS



④	Rev. R.O.W. in Parcel #2702	3-26-63	CSR
③	Added Temporary Detour Easement	10-13-64	CSR
②	Corrected Utility Easement Notes	10-3-66	CSR
①	Revised R.O.W. Lines; Deleted Parcel 2707; Added Easement	8-30-66	C.S.R.
No.	REVISIONS	DATE.	AUTH.
	FINAL R.O.W.	7-21-66	C.S.R.

PREPARED BY  
**THE CITY OF DETROIT**  
 IN COOPERATION WITH  
**THE WAYNE COUNTY ROAD COMMISSION**

Work This Sheet With Sheet #505

**I-96 JEFFRIES FREEWAY**  
**R.O.W.**  
**ALLEY EAST OF LARCHMONT**  
**TO ALLEY EAST OF VINEWOOD**



S. P. R. DIV. NO.	STATE	PROJ. NO.	FISCAL YEAR	SHEET NO.	TOTAL SHEETS
4	MICH.				
ROUTE	STATE PROJECT	COUNTY	CITY	SHEET NO.	TOTAL SHEETS
I-96	82123J	Wayne	Detroit	511	
S. P. R. DIV. NO.	STATE	PROJ. NO.	FISCAL YEAR	SHEET NO.	TOTAL SHEETS
4	MICH.				
ROUTE	STATE PROJECT	COUNTY	CITY	SHEET NO.	TOTAL SHEETS



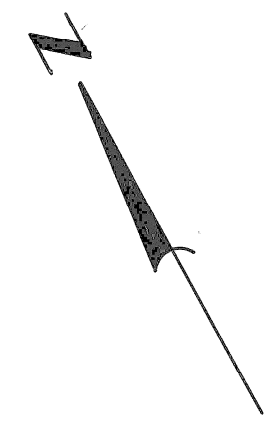
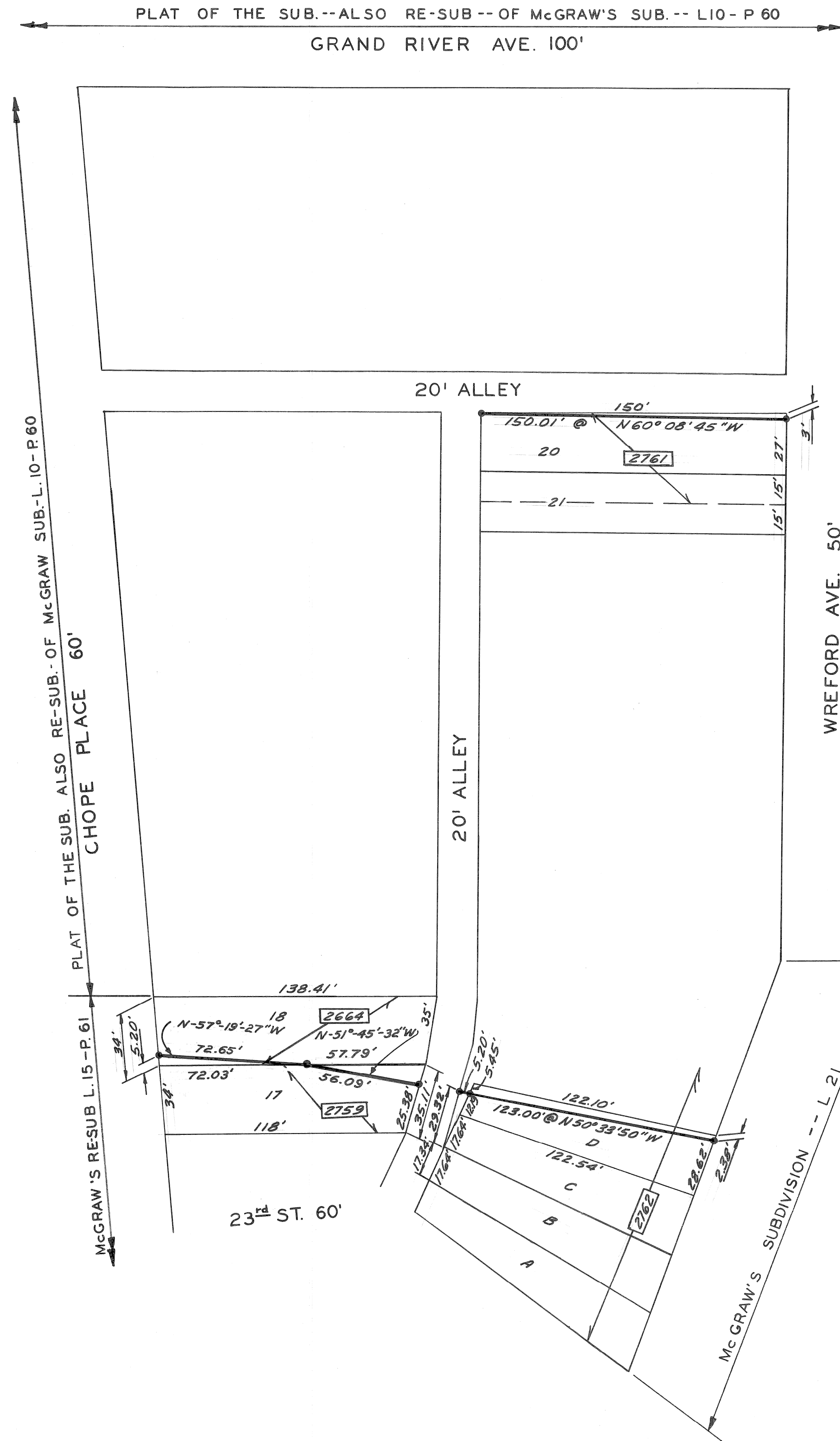
5	Added Perm. Util. Esmt., E. of Taft	2-17-68	CSR
4	Added Permanent Utility Easement	3-14-67	CSR
3	Corrected Limits of Parcel #2745	10-13-66	CSR
2	Deleted Parcel #2754		
	Added Utility Easement Note	10-3-66	CSR
1	Deleted Parcel 2757; Added Bearing		
	Added Easement; Corrected Alley Width	8-30-66	CSR
No.	REVISIONS	DATE	AUTH.
	FINAL R.O.W.	7-21-66	C.S.R.

PREPARED BY  
 THE CITY OF DETROIT  
 IN COOPERATION WITH  
 THE WAYNE COUNTY ROAD COMMISSION

Work This Sheet With Sheet #506  
**I-96 JEFFRIES FREEWAY**  
**R.O.W.**  
**ALLEY WEST OF TAFT TO CHOPE PL.**

FILE NO.	STATE	PROJECT	CITY	SHEET NO.
82123J	MI	I-96	Detroit	511

B. P. R. DIV. NO.	STATE	PROJ. NO.	FISCAL YEAR	SHEET NO.	TOTAL SHEETS
4	MICH.				
ROUTE	STATE PROJECT	COUNTY	CITY	SHEET NO.	TOTAL SHEETS
I-96	82123 J	Wayne	Detroit	512	
B. P. R. DIV. NO.	STATE	PROJ. NO.	FISCAL YEAR	SHEET NO.	TOTAL SHEETS
4	MICH.				
ROUTE	STATE PROJECT	COUNTY	SHEET NO.	TOTAL SHEETS	



Work This Sheet With Sheet # 507

② Added Plat Title		CSR
① Corrected R.O.W. Line, Dimensions & Bearings	10-3-66	C.S.R.
No.	REVISIONS	DATE AUTH.
		7-21-66 C.S.R.

PREPARED BY  
 THE CITY OF DETROIT  
 IN COOPERATION WITH  
 THE WAYNE COUNTY ROAD COMMISSION

I-96 JEFFRIES FREEWAY  
 R. O. W.  
 CHOZE PLACE TO WREFORD

FILE NO. 178	STATE PROJECT	FEDERAL PROJECT	SHEET NO.
R82123 J	82123 J I-96		512