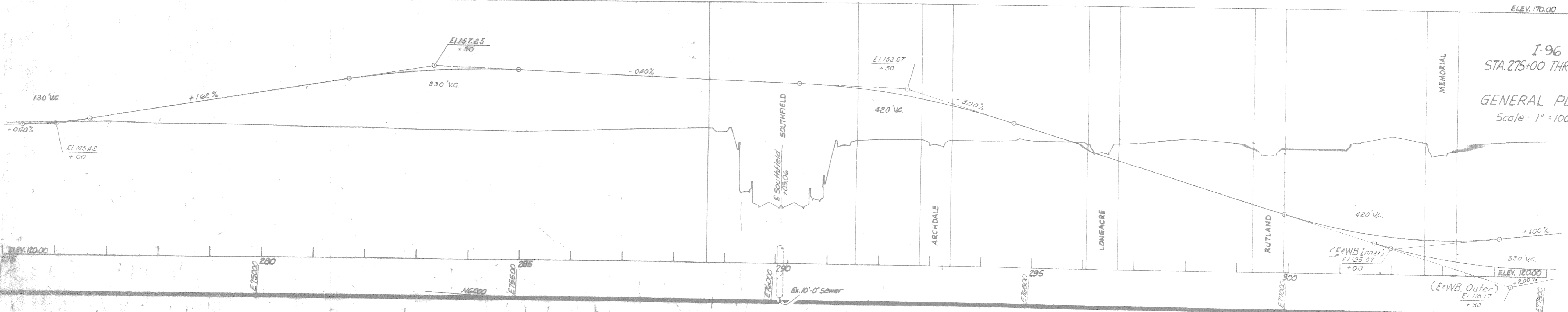
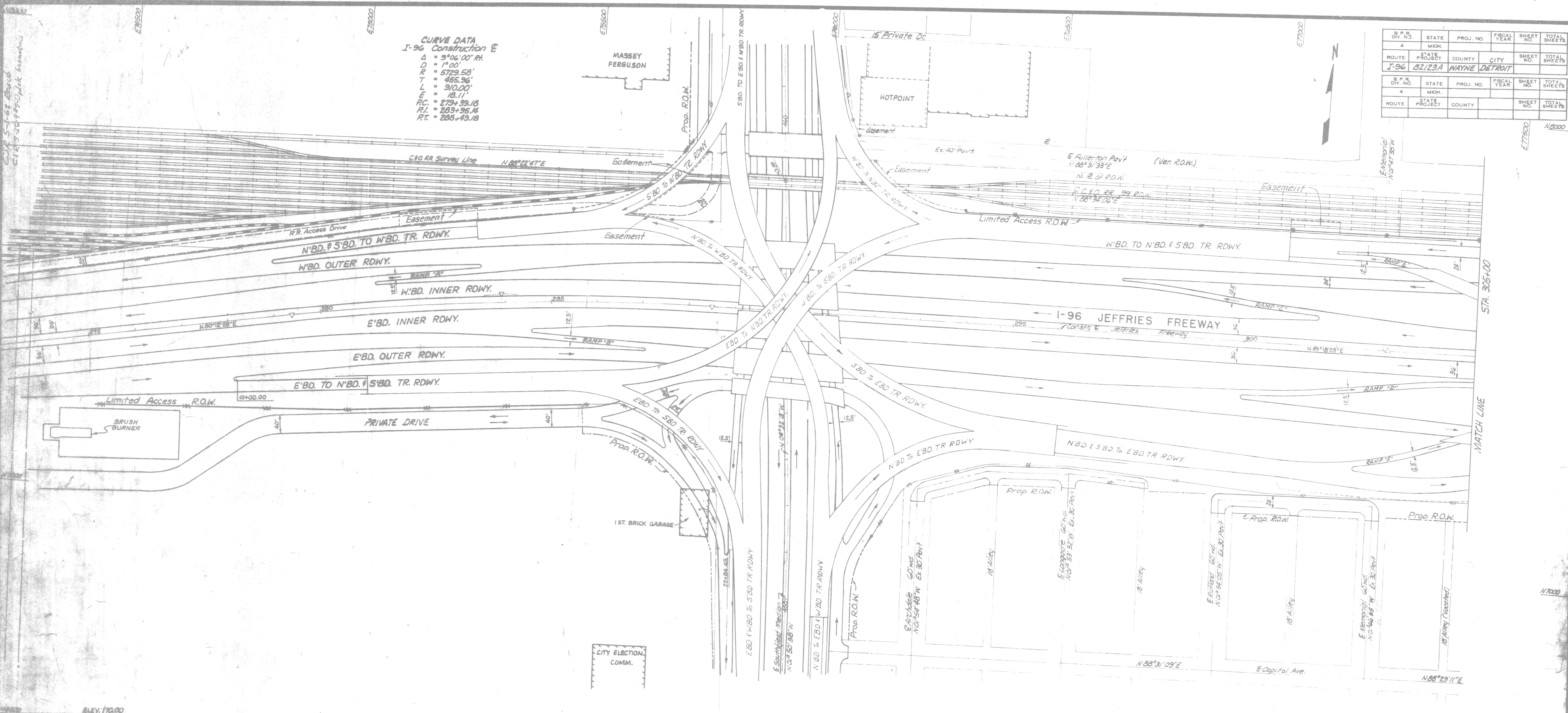
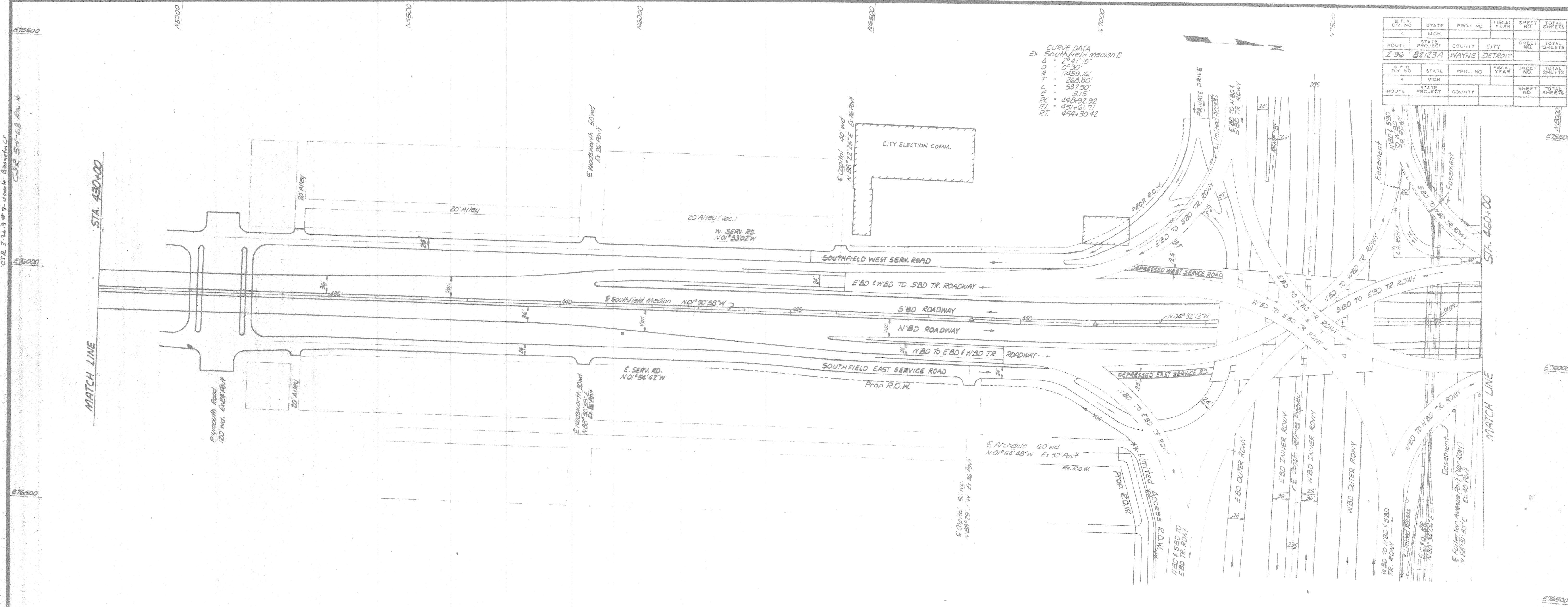


CURVE DATA
 I-96 Construction @
 Δ = 9°06'00" R.
 D = 1°00'
 R = 5729.58'
 T = 455.96'
 L = 910.00'
 E = 18.11'
 P.C. = 275+59.18
 P.T. = 285+95.14
 P.T. = 286+49.18

B.P.R. DIV. NO.	STATE	PROJ. NO.	FISCAL YEAR	SHEET NO.	TOTAL SHEETS
4	MICH.				
ROUTE	STATE PROJECT	COUNTY	CITY	SHEET NO.	TOTAL SHEETS
I-96	82123A	WAYNE	DETROIT		
B.P.R. DIV. NO.	STATE	PROJ. NO.	FISCAL YEAR	SHEET NO.	TOTAL SHEETS
4	MICH.				
ROUTE	STATE PROJECT	COUNTY	CITY	SHEET NO.	TOTAL SHEETS

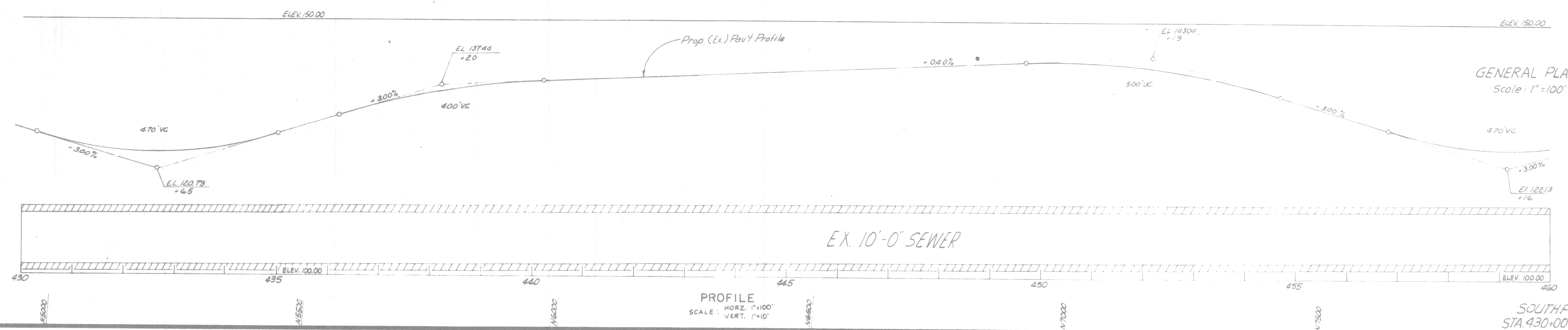
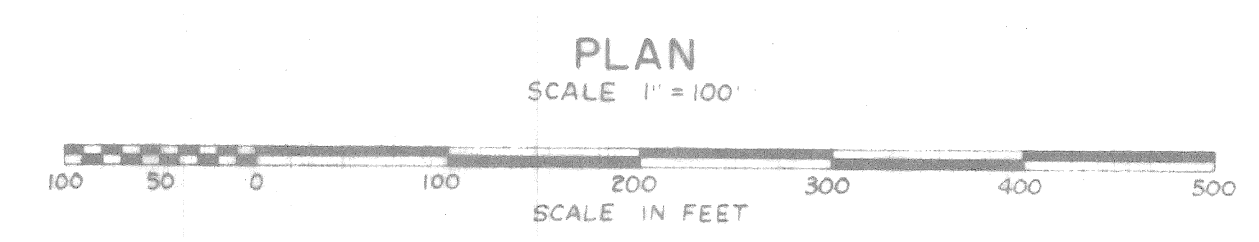


I-96
 STA. 275+00 THRU 305+00
GENERAL PLANS
 Scale: 1" = 100'



CURVE DATA
 EX. Southfield Medion E
 STA. 430+00
 RADIUS: 1453.16'
 CHORD: 263.80'
 DELTA: 3.15
 PC: 44.0492.92
 PT: 45.1461.71
 RT: 454+30.42

B.P.R. DIV. NO.	STATE	PROJ. NO.	FISCAL YEAR	SHEET NO.	TOTAL SHEETS
4	MICH.				
ROUTE	PROJECT	COUNTY	CITY	SHEET NO.	TOTAL SHEETS
I-96	BZ123A	WAYNE	DETROIT		



PROFILE
 SCALE: HORZ. 1"=100'
 VERT. 1"=10'

GENERAL PLANS
 Scale: 1"=100'

EX. 10'-0" SEWER

SOUTHFIELD
 STA. 430+00 TO 460+00

CURVE DATA #11
 $\Delta = 5^{\circ}16'10''$
 $D = 2^{\circ}00'00''$
 $R = 2864.79'$
 $T = 131.83'$
 $L = 263.47'$
 $E = 3.03'$
 $PC = 53.51'$ Rt. off P.I. #194.08 Const. E
 $PI = 49.00'$ Lt. Sta. 287+72.95 Const. E

CURVE DATA #28
 $\Delta = 7^{\circ}24'16''$
 $D = 1^{\circ}42'00''$
 $R = 3370.34'$
 $T = 218.08'$
 $L = 435.56'$
 $E = 7.05'$
 $PC = 284+52.59$
 $PI = 287+00.67$
 $PT = 289+18.14$

CURVE DATA #62
 $\Delta = 83^{\circ}46'31''$
 $D = 15^{\circ}06'00''$
 $R = 379.44'$
 $T = 340.91'$
 $L = 554.91'$
 $E = 130.25'$
 $PC = 17+68.41$
 $PI = 21+08.72$
 $PT = 23+23.22$

CURVE DATA #53
 $\Delta = 23^{\circ}51'23.66''$
 $D = 14^{\circ}30'00''$
 $R = 395.14'$
 $T = 83.47'$
 $L = 164.53'$
 $E = 3.72'$
 $PC = 13+11.42$
 $PI = 13+94.89$
 $PT = 14+75.94$

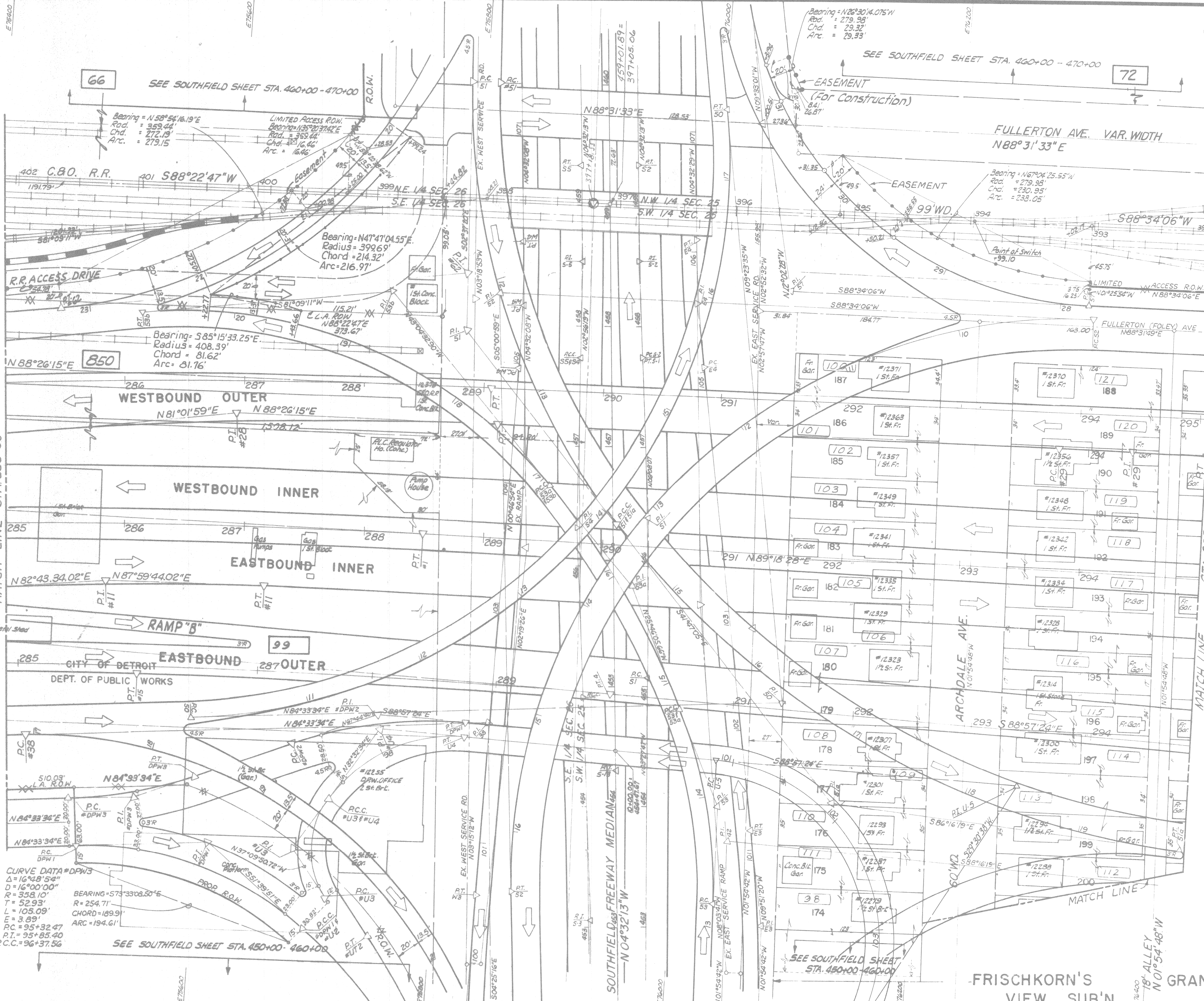
CURVE DATA #US
 $\Delta = 69^{\circ}42'24.72''$
 $D = 79^{\circ}34'39.30''$
 $R = 72.00'$
 $T = 50.14'$
 $L = 87.60'$
 $E = 15.74'$
 $PC = 96+52.72$
 $PI = 97+02.86$
 $PT = 97+40.31$

CURVE DATA #63
 $\Delta = 2^{\circ}46'37''$
 $D = 0^{\circ}45'00''$
 $R = 7639.44'$
 $T = 185.17'$
 $L = 370.26'$
 $E = 2.24'$
 $PC = 451+20.22$
 $PI = 453+05.38$
 $PT = 454+90.48$

CURVE DATA #53a
 $\Delta = 17^{\circ}18'27.24''$
 $D = 8^{\circ}00'00''$
 $R = 716.20'$
 $T = 109.00'$
 $L = 216.34'$
 $E = 8.25'$
 $PC = 14+75.94$
 $PI = 15+84.95$
 $PT = 16+92.29$

CURVE DATA #38
 $\Delta = 91^{\circ}01'10''$
 $D = 15^{\circ}06'00''$
 $R = 379.44'$
 $T = 386.25'$
 $L = 602.78'$
 $E = 162.01'$
 $PC = 16+93.65$
 $PI = 20+79.91$
 $PT = 22+96.43$

CURVE DATA #DPW1
 $\Delta = 43^{\circ}46'35''$
 $D = 21^{\circ}4'35.81''$
 $R = 269.71'$
 $T = 108.36'$
 $L = 206.07'$
 $E = 20.35'$
 $PC = 93+72.25$
 $PI = 96+43.61$
 $PT = 97+43.32$



B. P. R. DIV. NO.	STATE	PROJ. NO.	FISCAL YEAR	SHEET NO.	TOTAL SHEETS
4	MICH.				
ROUTE	STATE PROJECT	COUNTY	CITY	SHEET NO.	TOTAL SHEETS
I-96	82123A	WAYNE	DETROIT	574	

CURVE DATA #52
 $\Delta = 1^{\circ}35'54''$
 $D = 1^{\circ}00'00''$
 $R = 5729.58'$
 $T = 79.92'$
 $L = 159.83'$
 $E = 0.56'$
 $PC = 457+75.43$
 $PI = 458+55.35$
 $PT = 459+35.26$

CURVE DATA #54
 $\Delta = 5^{\circ}18'51''$
 $D = 5^{\circ}00'00''$
 $R = 1445.92'$
 $T = 53.13'$
 $L = 106.28'$
 $E = 1.23'$
 $PC = 105+03.95$
 $PI = 105+57.13$
 $PT = 106+10.23$

CURVE DATA #51
 $\Delta = 2^{\circ}40'20''$
 $D = 1^{\circ}00'00''$
 $R = 5729.58'$
 $T = 53.13'$
 $L = 106.28'$
 $E = 1.23'$
 $PC = 455+08.18$
 $PI = 456+41.81$
 $PT = 457+75.40$

CURVE DATA #US
 $\Delta = 118^{\circ}28'02''$
 $D = 30^{\circ}12'05''$
 $R = 149.99'$
 $T = 251.94'$
 $L = 310.12'$
 $E = 143.22'$
 $PC = 100+82.59$
 $PI = 294+37.39$
 $PT = 103+92.77$

CURVE DATA #51a
 $\Delta = 39^{\circ}09'45''$
 $D = 9^{\circ}54'00''$
 $R = 578.75'$
 $T = 205.87'$
 $L = 395.58'$
 $E = 35.53'$
 $PC = 10+33.04$
 $PI = 12+38.91$
 $PT = 14+28.62$

CURVE DATA #E-3
 $\Delta = 7^{\circ}56'38''$
 $D = 5^{\circ}00'00''$
 $R = 1445.92'$
 $T = 79.92'$
 $L = 159.83'$
 $E = 2.76'$
 $PC = 99+37.20$
 $PI = 100+36.77$
 $PT = 101+16.08$

CURVE DATA #42
 $\Delta = 93^{\circ}38'23''$
 $D = 16^{\circ}48'00''$
 $R = 341.05'$
 $T = 363.43'$
 $L = 557.38'$
 $E = 157.35'$
 $PC = 14+25.83$
 $PI = 17+89.26$
 $PT = 19+83.21$

FOR ADDITIONAL R.O.W. INFORMATION
 SEE SPECIAL DETAIL SHEET NO. 531
 & 532

B.P. NO.	STATE	PROJ. NO.	FISCAL YEAR	SHEET NO.	TOTAL SHEETS
4	MICH.				
ROUTE	PROJECT	COUNTY	CITY	SHEET NO.	TOTAL SHEETS
I-96	82123A	WAYNE	DETROIT	516	

B.P. NO.	STATE	PROJ. NO.	FISCAL YEAR	SHEET NO.	TOTAL SHEETS
4	MICH.				
ROUTE	PROJECT	COUNTY	CITY	SHEET NO.	TOTAL SHEETS

C.S.P. 4-2-67 E.M.H. B.O.V.
 C.S.E. 5-7-68 Rev. 6

CURVE DATA #4
 $\Delta = 130^{\circ}21'05''$
 $D = 72^{\circ}03'56.62''$
 $R = 450.00'$
 $T = 72.29'$
 $L = 144.14'$
 $E = 5.89'$
 $PC = 14+27.15$
 $PI = 14+28.94$
 $PT = 15+71.28$

CURVE DATA #23
 $\Delta = 62^{\circ}21'13''$
 $D = 1^{\circ}30'00''$
 $R = 3819.72'$
 $T = 71.43'$
 $L = 42.58'$
 $E = 0.53'$
 $PC = 303+21.41$
 $PI = 305+32.05$
 $PT = 307+43.85$

CURVE DATA #24
 $\Delta = 7^{\circ}41'16.44''$
 $D = 3^{\circ}30'00''$
 $R = 1459.16'$
 $T = 361.59'$
 $L = 734.89'$
 $E = 5.89'$
 $PC = 303+10.66$
 $PI = 307+75.64$
 $PT = 310+45.37$

CURVE DATA #2
 $\Delta = 3^{\circ}40'28''$
 $D = 0^{\circ}30'00''$
 $R = 1459.16'$
 $T = 361.59'$
 $L = 734.89'$
 $E = 5.89'$
 $PC = 303+10.66$
 $PI = 307+75.64$
 $PT = 310+45.37$

CURVE DATA #12
 $\Delta = 2^{\circ}41'52''$
 $D = 0^{\circ}30'00''$
 $R = 1459.16'$
 $T = 361.59'$
 $L = 734.89'$
 $E = 5.89'$
 $PC = 305+05.81$
 $PI = 307+75.64$
 $PT = 310+45.37$

CURVE DATA #48
 $\Delta = 1^{\circ}04'55''$
 $D = 3^{\circ}40'52.24''$
 $R = 660.00'$
 $T = 63.63'$
 $L = 125.16'$
 $E = 3.69'$
 $PC = 14+05.75$
 $PI = 14+75.60$
 $PT = 15+44.94$

CURVE DATA #17
 $\Delta = 14^{\circ}18'07''$
 $D = 2^{\circ}00'00''$
 $R = 2864.79'$
 $T = 32.55'$
 $L = 65.10'$
 $E = 0.18'$
 $PC = 304+80.59$
 $PI = 305+13.14$
 $PT = 305+45.69$

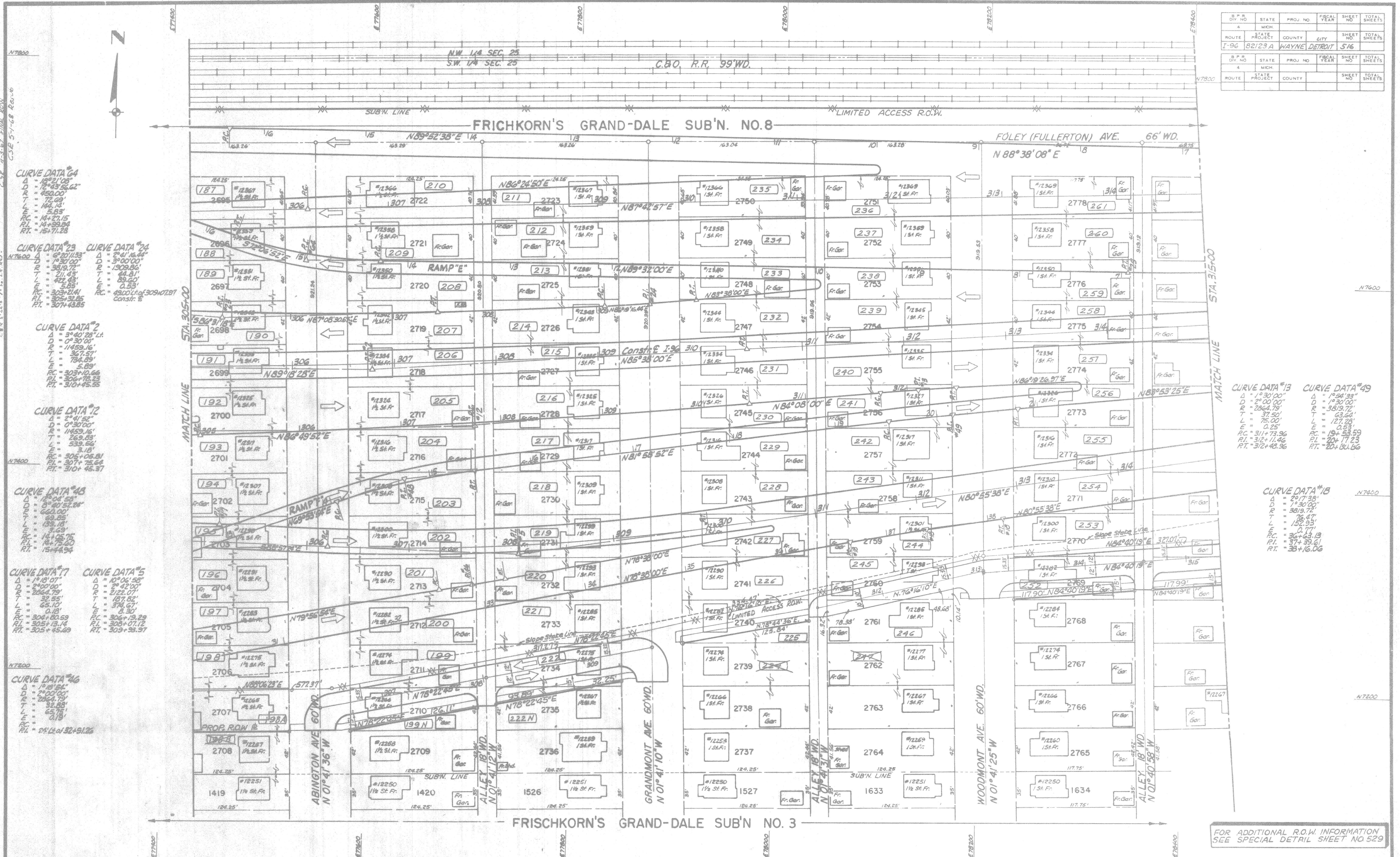
CURVE DATA #5
 $\Delta = 10^{\circ}06'55''$
 $D = 3^{\circ}42'00''$
 $R = 2122.07'$
 $T = 187.82'$
 $L = 374.67'$
 $E = 8.30'$
 $PC = 306+19.29$
 $PI = 308+07.12$
 $PT = 309+38.97$

CURVE DATA #46
 $\Delta = 1^{\circ}15'54''$
 $D = 2^{\circ}00'00''$
 $R = 2864.79'$
 $T = 32.55'$
 $L = 65.10'$
 $E = 0.18'$
 $PC = 04+12.01$
 $PI = 04+32+91.26$

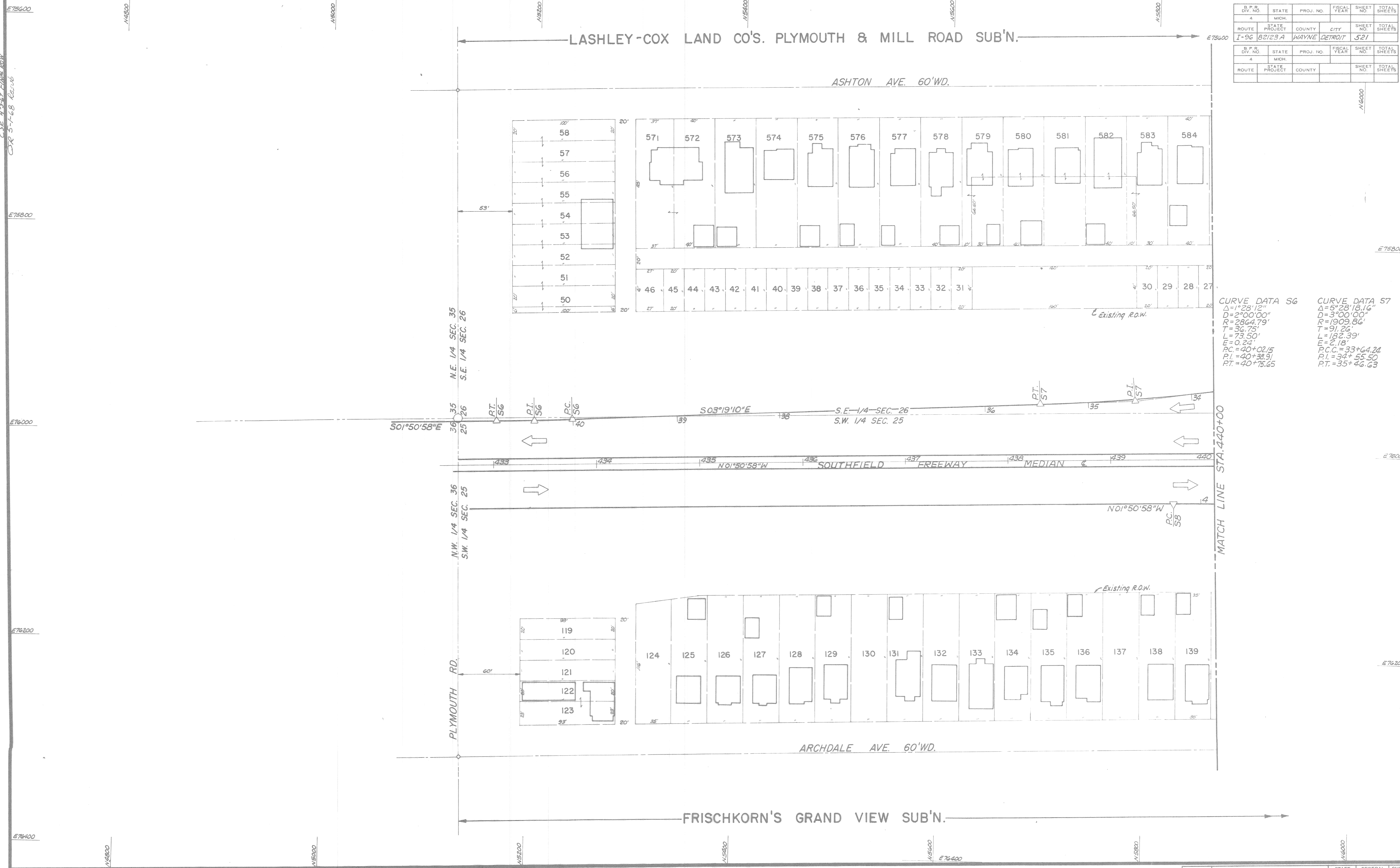
CURVE DATA #13
 $\Delta = 1^{\circ}30'00''$
 $D = 2^{\circ}00'00''$
 $R = 2864.79'$
 $T = 32.55'$
 $L = 65.10'$
 $E = 0.25'$
 $PC = 311+73.96$
 $PI = 312+11.46$
 $PT = 312+48.36$

CURVE DATA #49
 $\Delta = 1^{\circ}54'33''$
 $D = 1^{\circ}30'00''$
 $R = 3819.72'$
 $T = 3819.72'$
 $L = 63.24'$
 $E = 127.28'$
 $PC = 19+53.59$
 $PI = 20+17.23$
 $PT = 20+80.66$

CURVE DATA #18
 $\Delta = 2^{\circ}17'38''$
 $D = 1^{\circ}30'00''$
 $R = 3819.72'$
 $T = 76.47'$
 $L = 152.93'$
 $E = 0.77'$
 $PC = 30+63.13$
 $PI = 37+39.61$
 $PT = 38+16.06$



FOR ADDITIONAL R.O.W. INFORMATION
 SEE SPECIAL DETAIL SHEET NO 529

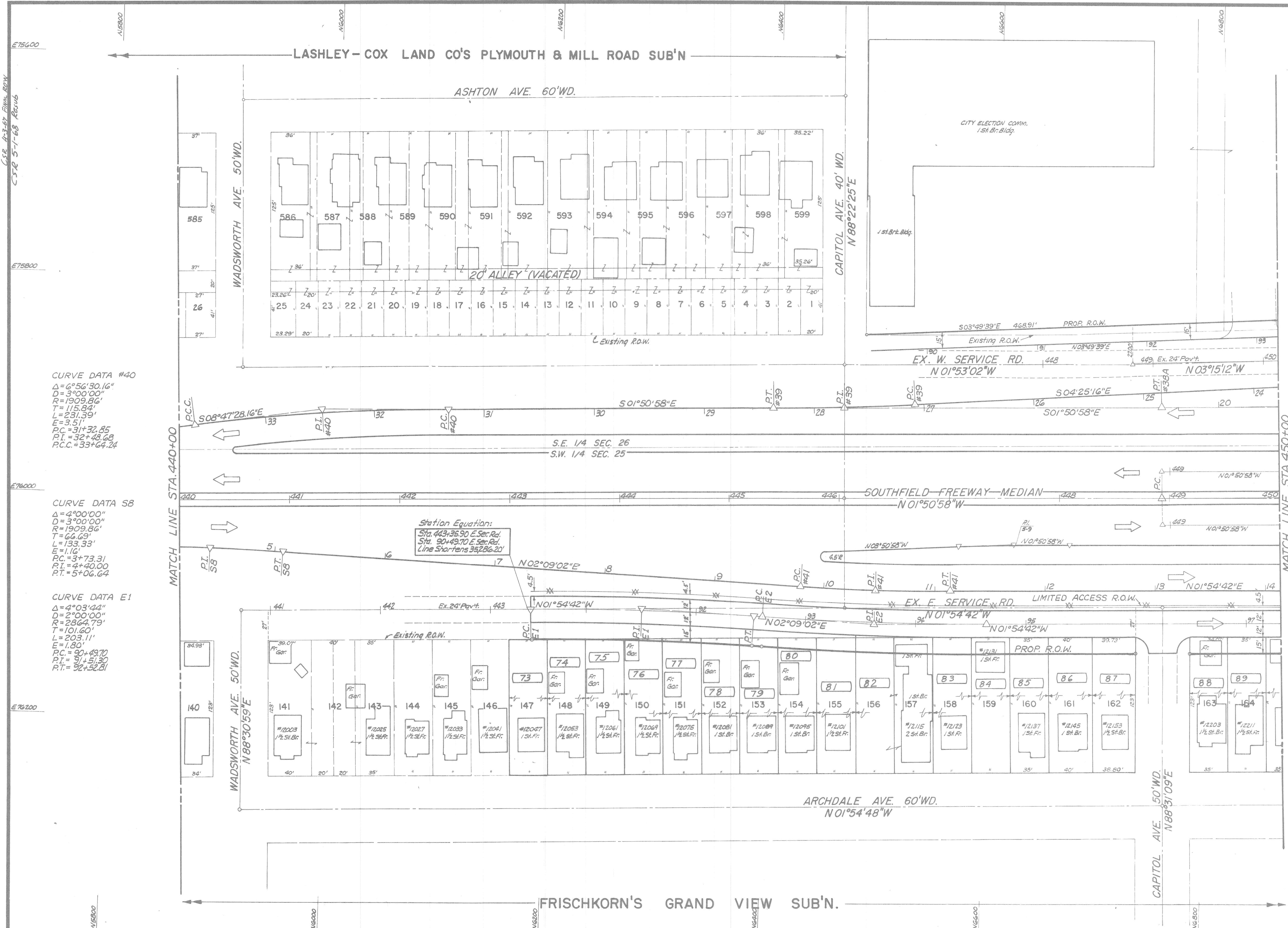


B.P.R. DIV. NO.	STATE	PROJ. NO.	FISCAL YEAR	SHEET NO.	TOTAL SHEETS
4	MICH.				
ROUTE	STATE PROJECT	COUNTY	CITY	SHEET NO.	TOTAL SHEETS
I-96	B2123A	WAYNE	DETROIT	521	

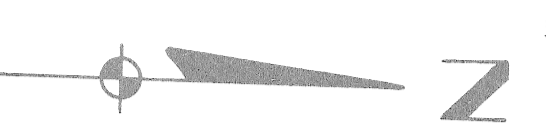
<p>CURVE DATA S6 $\Delta = 1728'12''$ $D = 2900'00''$ $R = 2864.79'$ $T = 36.75'$ $L = 73.50'$ $E = 0.24'$ $PC = 40+02.15$ $PI = 40+33.91$ $PT = 40+75.65$</p>	<p>CURVE DATA S7 $\Delta = 5728'18.16''$ $D = 3900'00''$ $R = 1909.86'$ $T = 91.26'$ $L = 182.39'$ $E = 2.18'$ $P.C.C. = 33+64.24$ $P.I. = 34+55.50$ $P.T. = 35+46.63$</p>
---	---

C.E.P. 4-24-77 PLYMOUTH RD
 C.P.R. 5-7-68 Rev. 16

MATCH LINE STA. 440+00



B.P.R. DIV. NO.	STATE	PROJ. NO.	FISCAL YEAR	SHEET NO.	TOTAL SHEETS
4	MICH.				
ROUTE	STATE PROJECT	COUNTY	CITY	SHEET NO.	TOTAL SHEETS
I-96	82123A	WAYNE	DETROIT	522	



CURVE DATA #40
 $\Delta = 6^\circ 56' 30.16''$
 $D = 3^\circ 00' 00''$
 $R = 1909.86'$
 $T = 115.82'$
 $L = 231.39'$
 $E = 3.51'$
 $PC = 31+32.85$
 $PI = 32+43.68$
 $PCC = 33+64.24$

CURVE DATA S8
 $\Delta = 4^\circ 00' 00''$
 $D = 3^\circ 00' 00''$
 $R = 1909.86'$
 $T = 64.63'$
 $L = 133.33'$
 $E = 1.16'$
 $PC = 3+73.31$
 $PI = 4+40.00$
 $RT = 5+06.64$

CURVE DATA E1
 $\Delta = 4^\circ 03' 44''$
 $D = 2^\circ 00' 00''$
 $R = 2864.79'$
 $T = 101.60'$
 $L = 203.11'$
 $E = 1.80'$
 $PC = 90+49.70$
 $PI = 91+51.30$
 $RT = 92+52.81$

CURVE DATA #39
 $\Delta = 2^\circ 34' 18''$
 $D = 5^\circ 00' 00''$
 $R = 2864.79'$
 $T = 64.30'$
 $L = 128.58'$
 $E = 0.72'$
 $PC = 27+08.27$
 $PI = 27+72.57$
 $RT = 28+36.85$

CURVE DATA #5-9
 $\Delta = 2^\circ 00' 00''$
 $D = 2^\circ 00' 00''$
 $R = 2864.79'$
 $T = 50.01'$
 $L = 100.00'$
 $E = 0.44'$

CURVE DATA #41
 $\Delta = 4^\circ 03' 44''$
 $D = 2^\circ 00' 00''$
 $R = 1909.86'$
 $T = 67.73'$
 $L = 135.41'$
 $E = 1.20'$
 $PC = 9+78.88$
 $PI = 10+46.61$
 $RT = 11+14.29$

CURVE DATA E2
 $\Delta = 4^\circ 03' 44''$
 $D = 2^\circ 00' 00''$
 $R = 2864.79'$
 $T = 101.60'$
 $L = 203.11'$
 $E = 1.80'$
 $PC = 92+61.36$
 $PI = 93+62.96$
 $RT = 94+64.47$

FOR ADDITIONAL R.O.W. INFORMATION SEE SPECIAL DETAIL SHEET NO. 530

B.P.R. DIV. NO.	STATE	PROJ. NO.	FISCAL YEAR	SHEET NO.	TOTAL SHEETS
4	MICH.			523	
ROUTE	STATE	COUNTY		SHEET NO.	TOTAL SHEETS
I-96	MI	WAYNE		523	

CURVE DATA *UT-1
 $\Delta = 20^{\circ}26'22''$
 $D = 32^{\circ}00'00''$
 $R = 179.05'$
 $T = 32.28'$
 $L = 63.57'$
 $E = 3.07'$
 $PC = 94+14.74$
 $PI = 95+41.62$
 $PCC = 94+71.62$

CURVE DATA *UT-2
 $\Delta = 12^{\circ}53'49.72''$
 $D = 5^{\circ}50'04.75''$
 $R = 648.53'$
 $T = 73.30'$
 $L = 145.91'$
 $E = 4.91'$
 $PC = 17.56+94+71.63$
 $PI = 34.04+94+08.67$

CURVE DATA *LH
 $\Delta = 28^{\circ}53'30''$
 $D = 42^{\circ}00'00''$
 $R = 136.42'$
 $T = 78.86'$
 $L = 56.88'$
 $E = 3.07'$
 $PC = 94+14.74$
 $PI = 94+43.60$
 $PCC = 94+71.62$

CURVE DATA *U-2
 $\Delta = 23^{\circ}56'42''$
 $D = 13^{\circ}30'00''$
 $R = 424.41'$
 $T = 50.00'$
 $L = 177.37'$
 $E = 9.24'$
 $PC = 94+71.62$
 $PI = 95+41.62$
 $PCC = 96+48.99$

CURVE DATA *U-3
 $\Delta = 69^{\circ}42'24.72''$
 $D = 79^{\circ}34'39.30''$
 $R = 72.00'$
 $T = 50.14'$
 $L = 87.60'$
 $E = 15.74'$
 $PC = 96+52.72$
 $PI = 97+02.89$
 $PCC = 97+40.31$

CURVE DATA *U-4
 $\Delta = 58^{\circ}30'02''$
 $D = 48^{\circ}04'25.24''$
 $R = 30.00'$
 $T = 72.80'$
 $L = 132.73'$
 $E = 19.00'$
 $PC = 97+40.31$
 $PI = 98+13.12$
 $PCC = 98+73.05$

CURVE DATA *U-5
 $\Delta = 118^{\circ}28'02''$
 $D = 38^{\circ}12'00''$
 $R = 149.99'$
 $T = 251.94'$
 $L = 310.12'$
 $E = 143.22'$
 $PC = 103+45.99$
 $PI = 103+37.53$
 $PCC = 103+45.71$

CURVE DATA *DPW1
 $\Delta = 43^{\circ}46'35''$
 $D = 21^{\circ}14'35.61''$
 $R = 263.77'$
 $T = 103.36'$
 $L = 206.01'$
 $E = 20.51'$
 $PC = 95+37.25$
 $PI = 96+45.61$
 $PCC = 97+43.32$

CURVE DATA *U-4
 $\Delta = 2^{\circ}46'37''$
 $D = 0^{\circ}45'00''$
 $R = 7639.44'$
 $T = 185.17'$
 $L = 370.26'$
 $E = 2.24'$
 $PC = 451+20.22$
 $PI = 453+05.38$
 $PCC = 454+90.48$

CURVE DATA *U-3
 $\Delta = 23^{\circ}17'56''$
 $D = 15^{\circ}42'00''$
 $R = 364.34'$
 $T = 73.34'$
 $L = 148.40'$
 $E = 7.68'$
 $PC = 97+24.49$
 $PI = 97+59.73$
 $PCC = 98+72.89$

CURVE DATA #38A
 $\Delta = 3^{\circ}10'01''$
 $D = 7^{\circ}00'00''$
 $R = 5729.53'$
 $T = 153.39'$
 $L = 316.65'$
 $E = 2.19'$
 $PC = 448+92.92$
 $PI = 451+61.71$
 $PCC = 454+30.42$

CURVE DATA #S3
 $\Delta = 2^{\circ}46'37''$
 $D = 0^{\circ}45'00''$
 $R = 7639.44'$
 $T = 185.17'$
 $L = 370.26'$
 $E = 2.24'$
 $PC = 451+20.22$
 $PI = 453+05.38$
 $PCC = 454+90.48$

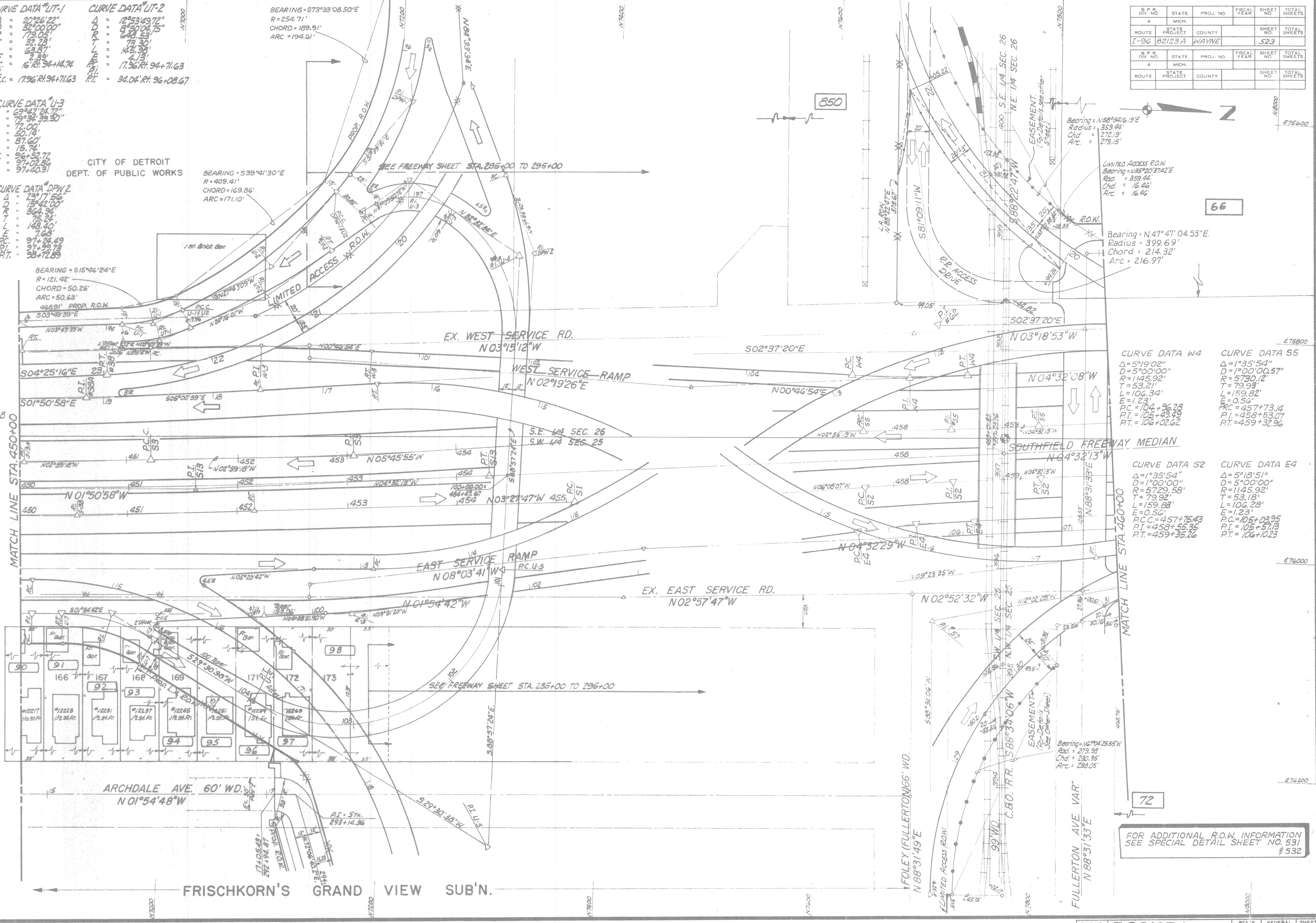
CURVE DATA #S38A
 $\Delta = 2^{\circ}41'15''$
 $D = 0^{\circ}30'00''$
 $R = 11459.16'$
 $T = 263.80'$
 $L = 537.50'$
 $E = 3.15'$
 $PC = 448+92.92$
 $PI = 451+61.71$
 $PCC = 454+30.42$

CURVE DATA #S38
 $\Delta = 1^{\circ}36'49''$
 $D = 0^{\circ}29'56.24''$
 $R = 11453.16'$
 $T = 161.71'$
 $L = 323.40'$
 $E = 1.14'$
 $PC = 448+92.92$
 $PI = 450+54.62$
 $PCC = 452+16.31$

CURVE DATA #S3A
 $\Delta = 1^{\circ}08'20''$
 $D = 0^{\circ}30'03.75''$
 $R = 11455.16'$
 $T = 113.65'$
 $L = 227.30'$
 $E = 2.76'$
 $PC = 448+92.92$
 $PI = 450+06.57$
 $PCC = 451+20.22$

CURVE DATA #E3
 $\Delta = 7^{\circ}26'38''$
 $D = 51^{\circ}00'00''$
 $R = 1145.92'$
 $T = 79.57'$
 $L = 156.88'$
 $E = 7.76'$
 $PC = 95+51.20$
 $PI = 100+36.77$
 $PCC = 101+16.08$

CURVE DATA #U-7
 $\Delta = 3^{\circ}25'20''$
 $D = 35^{\circ}22'03.94''$
 $R = 162.00'$
 $T = 45.57'$
 $L = 88.84'$
 $E = 6.29'$
 $PC = 105+01.46$
 $PI = 105+47.03$
 $PCC = 105+90.30$



FOR ADDITIONAL R.O.W. INFORMATION
 SEE SPECIAL DETAIL SHEET NO. 531
 # 532

3/16/12 10:07 AM
 238 316.12 x 0.97
 238 316.12 x 0.97
 238 316.12 x 0.97

CURVE DATA *UT-1		CURVE DATA *UT-2	
Δ = 20°26'22"	Δ = 12°53'49.72"	Δ = 12°53'49.72"	Δ = 12°53'49.72"
D = 32°00'00"	D = 8°50'04.75"	D = 8°50'04.75"	D = 8°50'04.75"
R = 179.05'	R = 648.53'	R = 648.53'	R = 648.53'
T = 32.25'	T = 73.30'	T = 73.30'	T = 73.30'
L = 63.87'	L = 145.39'	L = 145.39'	L = 145.39'
E = 9.44'	E = 2.13'	E = 2.13'	E = 2.13'
PC = 94+14.74	PC = 17.96+14.74	PC = 17.96+14.74	PC = 17.96+14.74
PI = 94+43.60	PI = 17.96+43.60	PI = 17.96+43.60	PI = 17.96+43.60
PCC = 94+71.62	PCC = 17.96+71.62	PCC = 17.96+71.62	PCC = 17.96+71.62
RCC = 17.96+14.74	RCC = 17.96+14.74	RCC = 17.96+14.74	RCC = 17.96+14.74
RT = 17.96+14.74	RT = 17.96+14.74	RT = 17.96+14.74	RT = 17.96+14.74

BEARING = S73°33'08.50"E
 R = 254.71'
 CHORD = 169.91'
 ARC = 194.61'

CURVE DATA *U-2		CURVE DATA *U-3	
Δ = 23°17'56"	Δ = 75°42'00"	Δ = 23°17'56"	Δ = 75°42'00"
D = 130°00'00"	D = 130°00'00"	D = 130°00'00"	D = 130°00'00"
R = 130.00'	R = 130.00'	R = 130.00'	R = 130.00'
T = 72.00'	T = 72.00'	T = 72.00'	T = 72.00'
L = 130.00'	L = 130.00'	L = 130.00'	L = 130.00'
E = 15.74'	E = 15.74'	E = 15.74'	E = 15.74'
PC = 96+52.72	PC = 96+52.72	PC = 96+52.72	PC = 96+52.72
PI = 96+102.86	PI = 96+102.86	PI = 96+102.86	PI = 96+102.86
PCC = 96+48.99	PCC = 96+48.99	PCC = 96+48.99	PCC = 96+48.99
RCC = 96+52.72	RCC = 96+52.72	RCC = 96+52.72	RCC = 96+52.72
RT = 96+102.86	RT = 96+102.86	RT = 96+102.86	RT = 96+102.86

CURVE DATA *U-4		CURVE DATA *U-5	
Δ = 2°04'37"	Δ = 0°45'00"	Δ = 2°04'37"	Δ = 0°45'00"
D = 0°45'00"	D = 0°45'00"	D = 0°45'00"	D = 0°45'00"
R = 7689.44'	R = 7689.44'	R = 7689.44'	R = 7689.44'
T = 185.17'	T = 185.17'	T = 185.17'	T = 185.17'
L = 370.26'	L = 370.26'	L = 370.26'	L = 370.26'
E = 2.24'	E = 2.24'	E = 2.24'	E = 2.24'
PC = 451+20.22	PC = 451+20.22	PC = 451+20.22	PC = 451+20.22
PI = 453+05.38	PI = 453+05.38	PI = 453+05.38	PI = 453+05.38
PCC = 454+30.48	PCC = 454+30.48	PCC = 454+30.48	PCC = 454+30.48
RCC = 451+20.22	RCC = 451+20.22	RCC = 451+20.22	RCC = 451+20.22
RT = 453+05.38	RT = 453+05.38	RT = 453+05.38	RT = 453+05.38

CURVE DATA *U-6		CURVE DATA *U-7	
Δ = 2°04'37"	Δ = 0°45'00"	Δ = 2°04'37"	Δ = 0°45'00"
D = 0°45'00"	D = 0°45'00"	D = 0°45'00"	D = 0°45'00"
R = 7689.44'	R = 7689.44'	R = 7689.44'	R = 7689.44'
T = 185.17'	T = 185.17'	T = 185.17'	T = 185.17'
L = 370.26'	L = 370.26'	L = 370.26'	L = 370.26'
E = 2.24'	E = 2.24'	E = 2.24'	E = 2.24'
PC = 451+20.22	PC = 451+20.22	PC = 451+20.22	PC = 451+20.22
PI = 453+05.38	PI = 453+05.38	PI = 453+05.38	PI = 453+05.38
PCC = 454+30.48	PCC = 454+30.48	PCC = 454+30.48	PCC = 454+30.48
RCC = 451+20.22	RCC = 451+20.22	RCC = 451+20.22	RCC = 451+20.22
RT = 453+05.38	RT = 453+05.38	RT = 453+05.38	RT = 453+05.38

CURVE DATA *U-8		CURVE DATA *U-9	
Δ = 2°04'37"	Δ = 0°45'00"	Δ = 2°04'37"	Δ = 0°45'00"
D = 0°45'00"	D = 0°45'00"	D = 0°45'00"	D = 0°45'00"
R = 7689.44'	R = 7689.44'	R = 7689.44'	R = 7689.44'
T = 185.17'	T = 185.17'	T = 185.17'	T = 185.17'
L = 370.26'	L = 370.26'	L = 370.26'	L = 370.26'
E = 2.24'	E = 2.24'	E = 2.24'	E = 2.24'
PC = 451+20.22	PC = 451+20.22	PC = 451+20.22	PC = 451+20.22
PI = 453+05.38	PI = 453+05.38	PI = 453+05.38	PI = 453+05.38
PCC = 454+30.48	PCC = 454+30.48	PCC = 454+30.48	PCC = 454+30.48
RCC = 451+20.22	RCC = 451+20.22	RCC = 451+20.22	RCC = 451+20.22
RT = 453+05.38	RT = 453+05.38	RT = 453+05.38	RT = 453+05.38

CURVE DATA *U-10		CURVE DATA *U-11	
Δ = 2°04'37"	Δ = 0°45'00"	Δ = 2°04'37"	Δ = 0°45'00"
D = 0°45'00"	D = 0°45'00"	D = 0°45'00"	D = 0°45'00"
R = 7689.44'	R = 7689.44'	R = 7689.44'	R = 7689.44'
T = 185.17'	T = 185.17'	T = 185.17'	T = 185.17'
L = 370.26'	L = 370.26'	L = 370.26'	L = 370.26'
E = 2.24'	E = 2.24'	E = 2.24'	E = 2.24'
PC = 451+20.22	PC = 451+20.22	PC = 451+20.22	PC = 451+20.22
PI = 453+05.38	PI = 453+05.38	PI = 453+05.38	PI = 453+05.38
PCC = 454+30.48	PCC = 454+30.48	PCC = 454+30.48	PCC = 454+30.48
RCC = 451+20.22	RCC = 451+20.22	RCC = 451+20.22	RCC = 451+20.22
RT = 453+05.38	RT = 453+05.38	RT = 453+05.38	RT = 453+05.38

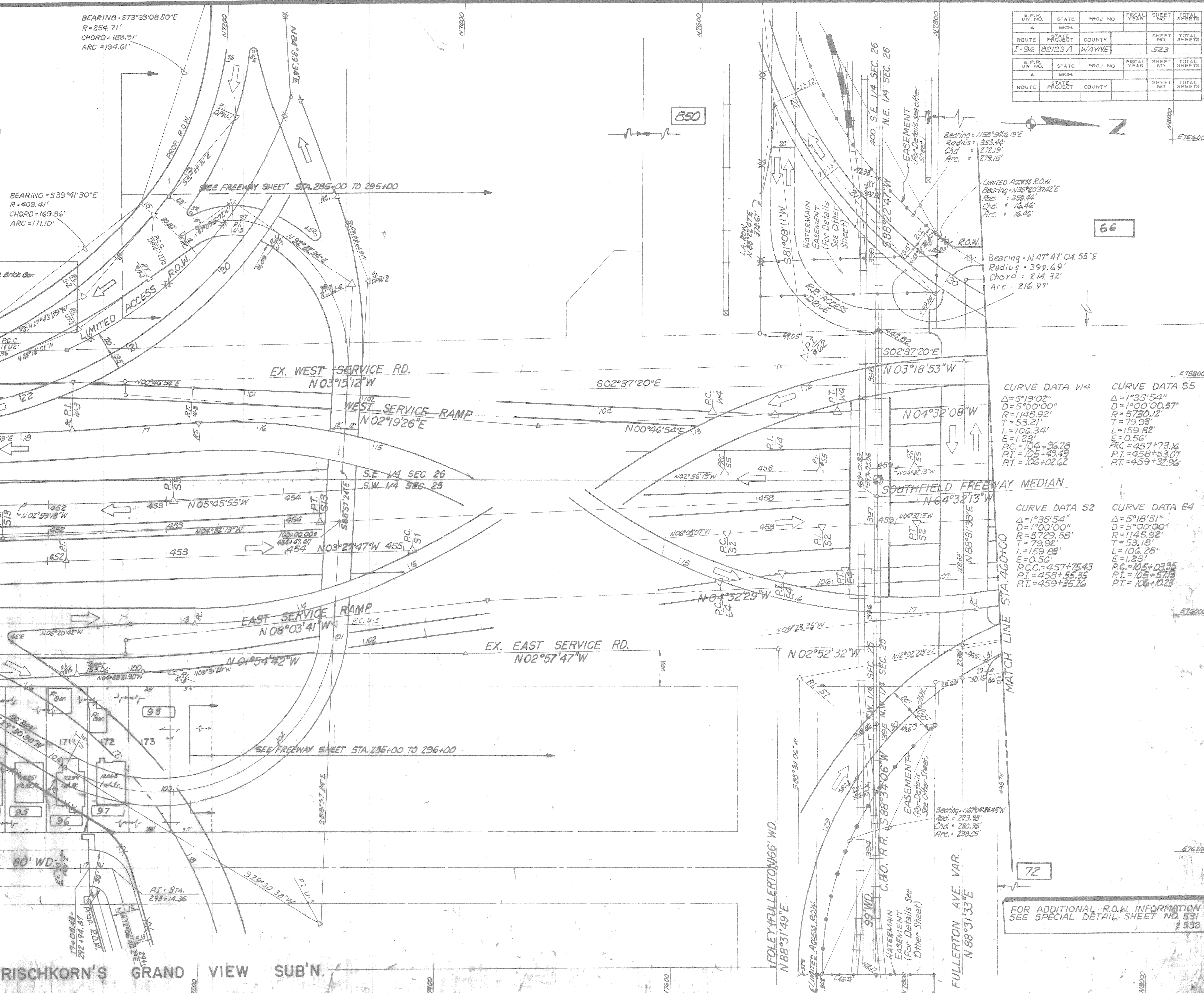
CURVE DATA *U-12		CURVE DATA *U-13	
Δ = 2°04'37"	Δ = 0°45'00"	Δ = 2°04'37"	Δ = 0°45'00"
D = 0°45'00"	D = 0°45'00"	D = 0°45'00"	D = 0°45'00"
R = 7689.44'	R = 7689.44'	R = 7689.44'	R = 7689.44'
T = 185.17'	T = 185.17'	T = 185.17'	T = 185.17'
L = 370.26'	L = 370.26'	L = 370.26'	L = 370.26'
E = 2.24'	E = 2.24'	E = 2.24'	E = 2.24'
PC = 451+20.22	PC = 451+20.22	PC = 451+20.22	PC = 451+20.22
PI = 453+05.38	PI = 453+05.38	PI = 453+05.38	PI = 453+05.38
PCC = 454+30.48	PCC = 454+30.48	PCC = 454+30.48	PCC = 454+30.48
RCC = 451+20.22	RCC = 451+20.22	RCC = 451+20.22	RCC = 451+20.22
RT = 453+05.38	RT = 453+05.38	RT = 453+05.38	RT = 453+05.38

CURVE DATA *U-14		CURVE DATA *U-15	
Δ = 2°04'37"	Δ = 0°45'00"	Δ = 2°04'37"	Δ = 0°45'00"
D = 0°45'00"	D = 0°45'00"	D = 0°45'00"	D = 0°45'00"
R = 7689.44'	R = 7689.44'	R = 7689.44'	R = 7689.44'
T = 185.17'	T = 185.17'	T = 185.17'	T = 185.17'
L = 370.26'	L = 370.26'	L = 370.26'	L = 370.26'
E = 2.24'	E = 2.24'	E = 2.24'	E = 2.24'
PC = 451+20.22	PC = 451+20.22	PC = 451+20.22	PC = 451+20.22
PI = 453+05.38	PI = 453+05.38	PI = 453+05.38	PI = 453+05.38
PCC = 454+30.48	PCC = 454+30.48	PCC = 454+30.48	PCC = 454+30.48
RCC = 451+20.22	RCC = 451+20.22	RCC = 451+20.22	RCC = 451+20.22
RT = 453+05.38	RT = 453+05.38	RT = 453+05.38	RT = 453+05.38

CURVE DATA *U-16		CURVE DATA *U-17	
Δ = 2°04'37"	Δ = 0°45'00"	Δ = 2°04'37"	Δ = 0°45'00"
D = 0°45'00"	D = 0°45'00"	D = 0°45'00"	D = 0°45'00"
R = 7689.44'	R = 7689.44'	R = 7689.44'	R = 7689.44'
T = 185.17'	T = 185.17'	T = 185.17'	T = 185.17'
L = 370.26'	L = 370.26'	L = 370.26'	L = 370.26'
E = 2.24'	E = 2.24'	E = 2.24'	E = 2.24'
PC = 451+20.22	PC = 451+20.22	PC = 451+20.22	PC = 451+20.22
PI = 453+05.38	PI = 453+05.38	PI = 453+05.38	PI = 453+05.38
PCC = 454+30.48	PCC = 454+30.48	PCC = 454+30.48	PCC = 454+30.48
RCC = 451+20.22	RCC = 451+20.22	RCC = 451+20.22	RCC = 451+20.22
RT = 453+05.38	RT = 453+05.38	RT = 453+05.38	RT = 453+05.38

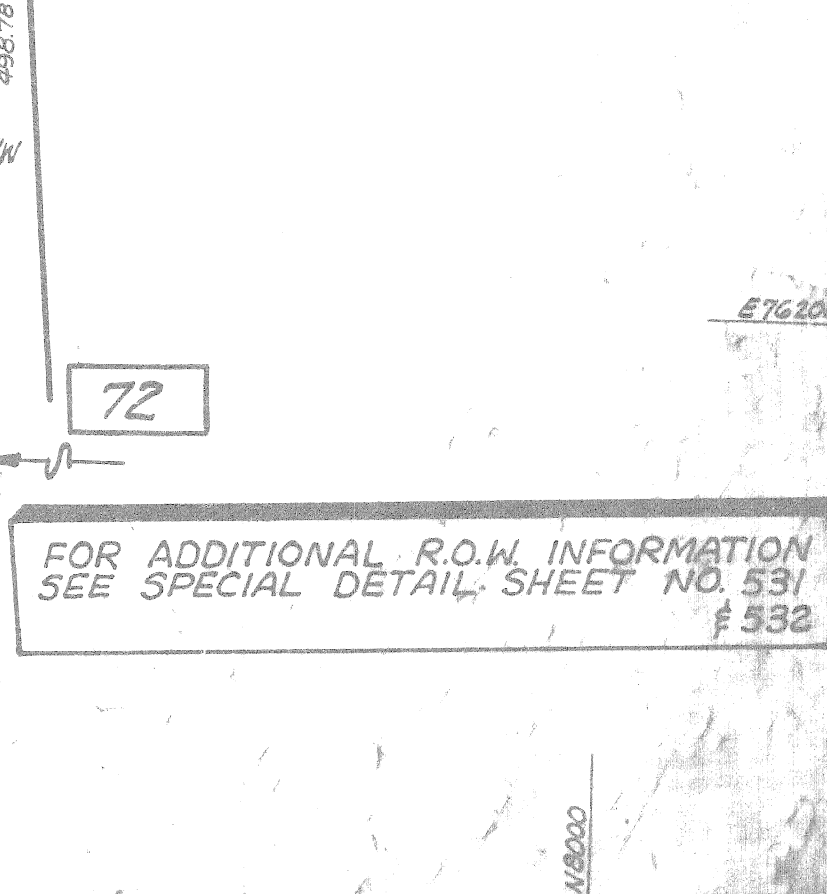
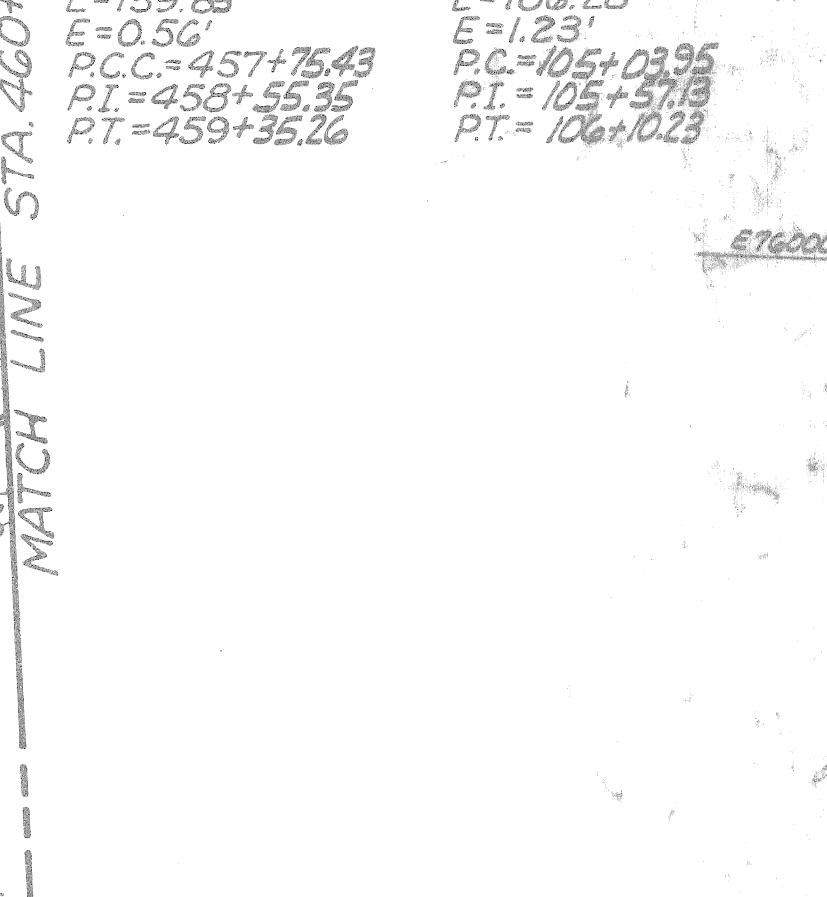
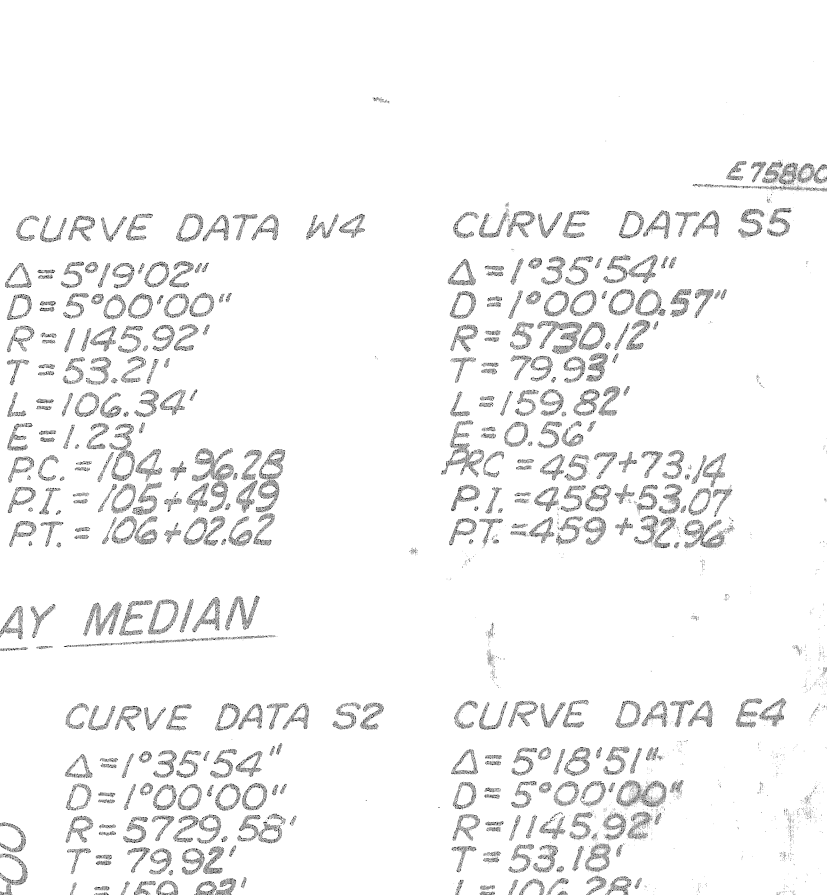
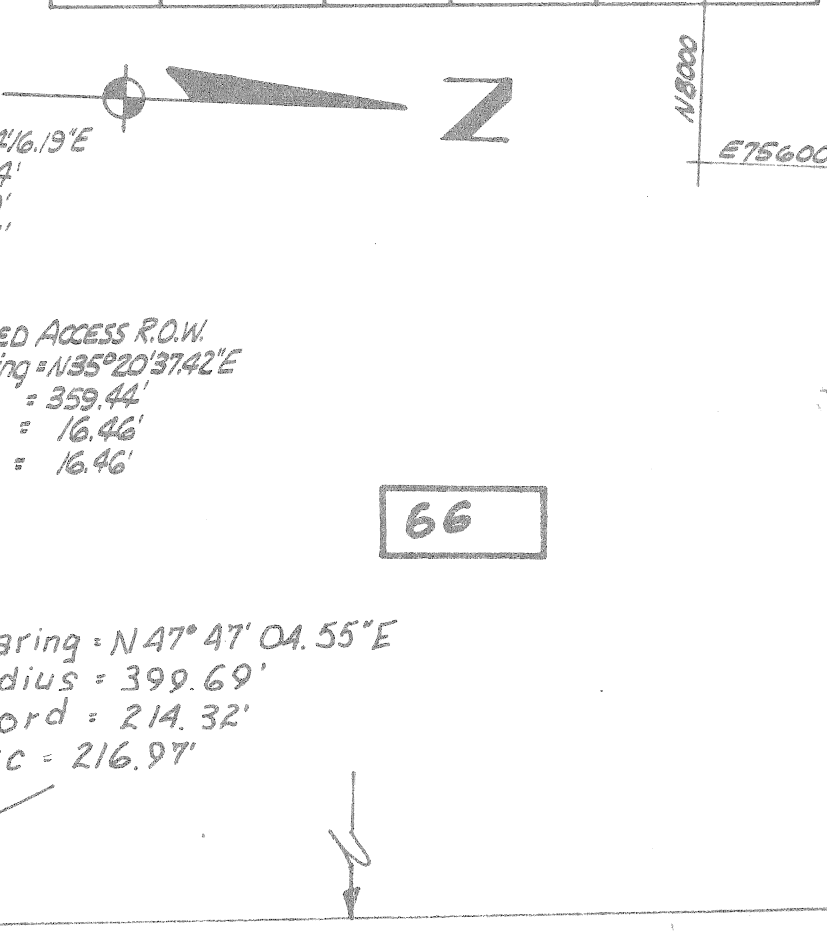
CURVE DATA *U-18		CURVE DATA *U-19	
Δ = 2°04'37"	Δ = 0°45'00"	Δ = 2°04'37"	Δ = 0°45'00"
D = 0°45'00"	D = 0°45'00"	D = 0°45'00"	D = 0°45'00"
R = 7689.44'	R = 7689.44'	R = 7689.44'	R = 7689.44'
T = 185.17'	T = 185.17'	T = 185.17'	T = 185.17'
L = 370.26'	L = 370.26'	L = 370.26'	L = 370.26'
E = 2.24'	E = 2.24'	E = 2.24'	E = 2.24'
PC = 451+20.22	PC = 451+20.22	PC = 451+20.22	PC = 451+20.22
PI = 453+05.38	PI = 453+05.38	PI = 453+05.38	PI = 453+05.38
PCC = 454+30.48	PCC = 454+30.48	PCC = 454+30.48	PCC = 454+30.48
RCC = 451+20.22	RCC = 451+20.22	RCC = 451+20.22	RCC = 451+20.22
RT = 453+05.38	RT = 453+05.38	RT = 453+05.38	RT = 453+05.38

CURVE DATA *U-20		CURVE DATA *U-21	
Δ = 2°04'37"	Δ = 0°45'00"	Δ = 2°04'37"	Δ = 0°45'00"
D = 0°45'00"	D = 0°45'00"	D = 0°45'00"	D = 0°45'00"
R = 7689.44'	R = 7689.44'	R = 7689.44'	R = 7689.44'
T = 185.17'	T = 185.17'	T = 185.17'	T = 185.17'
L = 370.26'	L = 370.26'	L = 370.26'	L = 370.26'
E = 2.24'	E = 2.24'	E = 2.24'	E = 2.24'
PC = 451+20.22	PC = 451+20.22	PC = 451+20.22	PC = 451+20.22
PI = 453+05.38	PI = 453+05.38	PI = 453+05.38	PI = 453+05.38
PCC = 454+30.48	PCC = 454+30.48	PCC = 454+30.48	PCC = 454+30.48
RCC = 451+20.22	RCC = 451+20.22	RCC = 451+20.22	RCC = 451+20.22
RT = 453+05.38	RT = 453+05.38	RT = 453+05.38	RT = 453+05.38



B.P.R. DIV. NO.	STATE	PROJ. NO.	FISCAL YEAR	SHEET NO.	TOTAL SHEETS
4	MICH.			523	

B.P.R. DIV. NO.	STATE	PROJ. NO.	FISCAL YEAR	SHEET NO.	TOTAL SHEETS
4	MICH.			523	

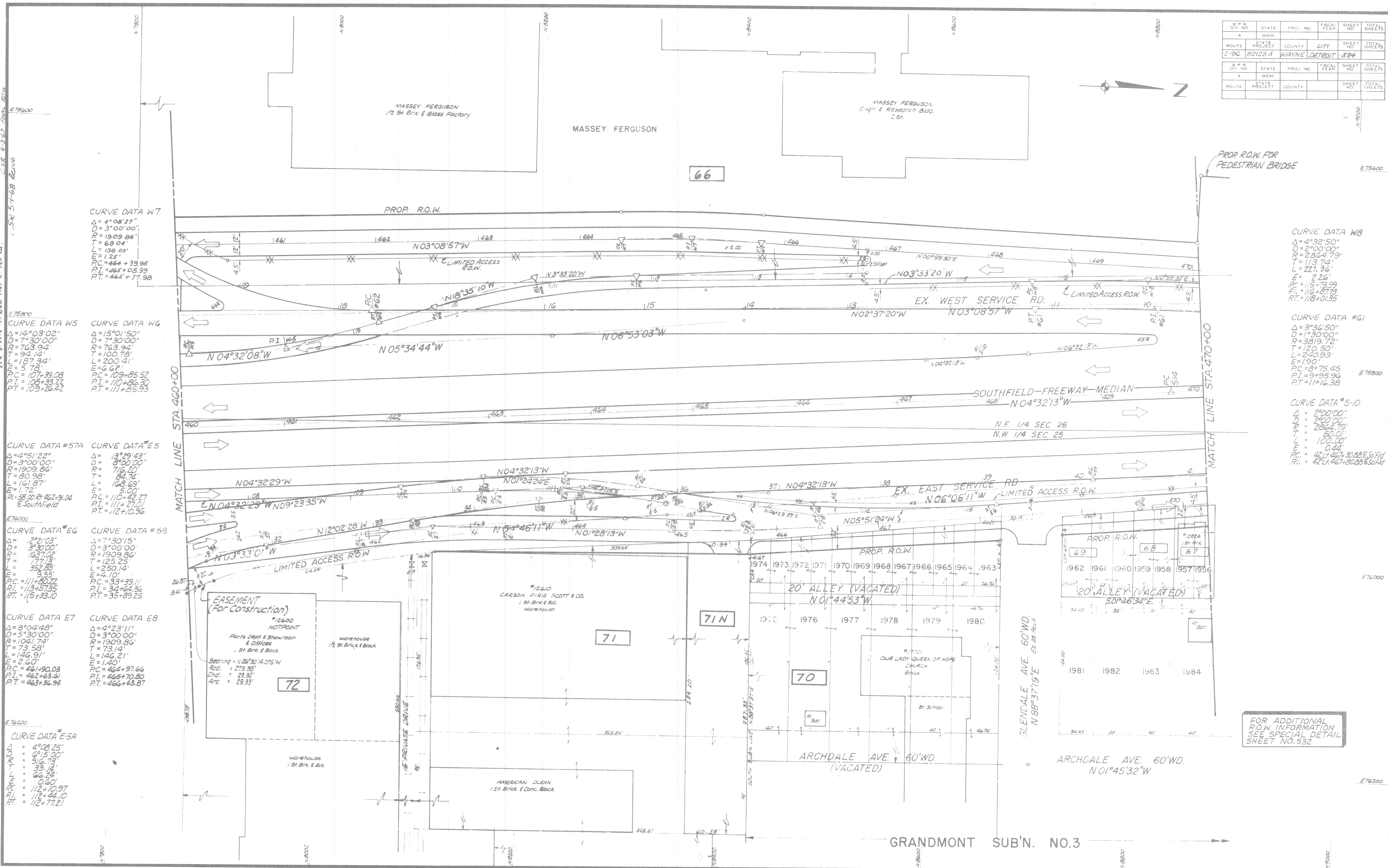


B.P.R. DIV. NO.	STATE	PROJ. NO.	FISCAL YEAR	SHEET NO.	TOTAL SHEETS
4	MICH.			523	

FOR ADDITIONAL R.O.W. INFORMATION
 SEE SPECIAL DETAIL, SHEET NO. 531
 # 532

CRP-1-27-94-C-Remainder of Section
 CSR-4-3-87-FINAL PLAN
 CSR-5-7-88-REVISED

B.P.R. DIV. NO.	STATE	PROJ. NO.	FISCAL YEAR	SHEET NO.	TOTAL SHEETS
4	MICH.				
ROUTE	STATE PROJECT	COUNTY	CITY	SHEET NO.	TOTAL SHEETS
I-96	B2123A	WAYNE	DETROIT	524	



CURVE DATA W7
 $\Delta = 4^{\circ}08'27''$
 $D = 3^{\circ}00'00''$
 $R = 1909.86'$
 $T = 69.04'$
 $L = 139.05'$
 $E = 1.25'$
 $PC = 464 + 39.95$
 $PI = 465 + 08.99$
 $PT = 465 + 77.98$

CURVE DATA WS
 $\Delta = 14^{\circ}03'02''$
 $D = 7^{\circ}30'00''$
 $R = 763.94'$
 $T = 94.14'$
 $L = 187.34'$
 $E = 5.78'$
 $PC = 107 + 39.08$
 $PI = 108 + 33.22$
 $PT = 109 + 26.42$

CURVE DATA #57A
 $\Delta = 4^{\circ}51'22''$
 $D = 3^{\circ}00'00''$
 $R = 1909.86'$
 $T = 80.98'$
 $L = 161.87'$
 $E = 1.72'$
 $PC = 58.00 + 462.91.04$
 $PI = 111 + 27.01$
 $PT = 112 + 10.96$

CURVE DATA #58
 $\Delta = 7^{\circ}30'15''$
 $D = 3^{\circ}00'00''$
 $R = 1909.86'$
 $T = 73.14'$
 $L = 146.21'$
 $E = 1.40'$
 $PC = 33 + 29.11$
 $PI = 34 + 64.36$
 $PT = 35 + 89.25$

CURVE DATA E7
 $\Delta = 8^{\circ}04'48''$
 $D = 5^{\circ}30'00''$
 $R = 1041.74'$
 $T = 73.58'$
 $L = 146.91'$
 $E = 2.60'$
 $PC = 461 + 90.03$
 $PI = 462 + 63.61$
 $PT = 463 + 36.94$

CURVE DATA E-5A
 $\Delta = 4^{\circ}08'25''$
 $D = 6^{\circ}15'00''$
 $R = 516.73'$
 $T = 33.16'$
 $L = 66.32'$
 $E = 0.60'$
 $PC = 112 + 10.97$
 $PI = 112 + 44.10$
 $PT = 112 + 77.21$

CURVE DATA W8
 $\Delta = 4^{\circ}32'50''$
 $D = 2^{\circ}00'00''$
 $R = 2864.79'$
 $T = 113.74'$
 $L = 227.36'$
 $E = 2.26'$
 $PC = 115 + 73.99$
 $PI = 116 + 87.73$
 $PT = 118 + 01.35$

CURVE DATA #G1
 $\Delta = 3^{\circ}36'50''$
 $D = 1^{\circ}30'00''$
 $R = 3819.72'$
 $T = 120.50'$
 $L = 240.93'$
 $E = 1.90'$
 $PC = 8 + 75.45$
 $PI = 9 + 95.96$
 $PT = 11 + 16.38$

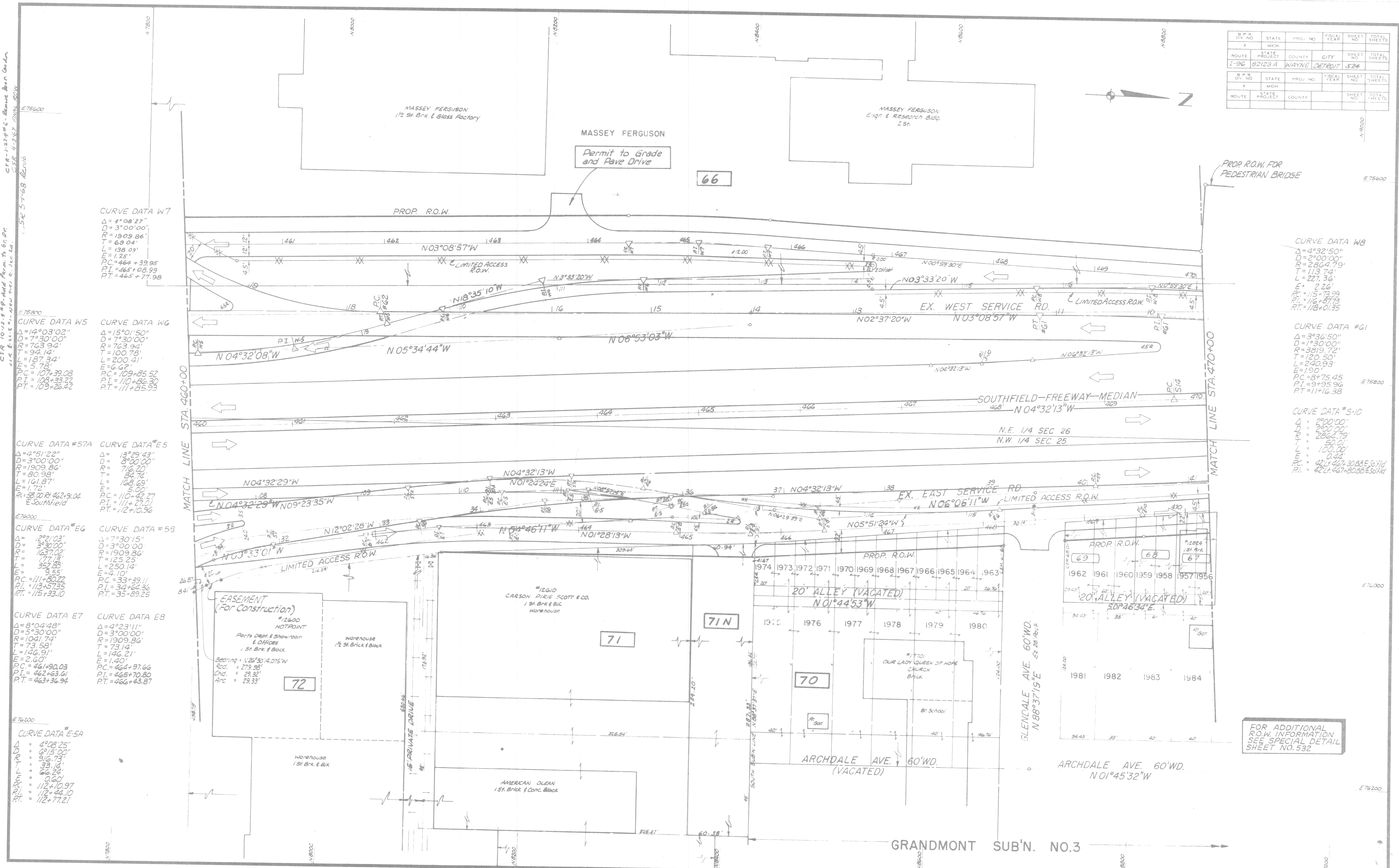
CURVE DATA #5-10
 $\Delta = 2^{\circ}00'00''$
 $D = 2^{\circ}00'00''$
 $R = 2864.79'$
 $T = 50.01'$
 $L = 100.00'$
 $E = 0.44'$
 $PC = 421 + 467.308885614$
 $PI = 421 + 467.308885614$
 $PT = 421 + 467.308885614$

FOR ADDITIONAL R.O.W. INFORMATION SEE SPECIAL DETAIL SHEET NO. 532

B.P.R. DIV. NO.	STATE	PROJ. NO.	FISCAL YEAR	SHEET NO.	TOTAL SHEETS
4	MICH.				
ROUTE	STATE PROJECT	COUNTY	CITY	SHEET NO.	TOTAL SHEETS
I-96	82123A	WAYNE	DETROIT	524	

B.P.R. DIV. NO.	STATE	PROJ. NO.	FISCAL YEAR	SHEET NO.	TOTAL SHEETS
4	MICH.				
ROUTE	STATE PROJECT	COUNTY	CITY	SHEET NO.	TOTAL SHEETS

C.S.R. 10 vs. 9-49-Add Perm. To Gr. Dr. C.S.R. 8 vs. 9-49-Add Perm. To Gr. Dr. C.S.R. 4-3-42-ENH. ROW. C.S.R. 5-7-68-ENH. ROW.



CURVE DATA W7
 $\Delta = 1^{\circ}08'27''$
 $D = 3^{\circ}00'00''$
 $R = 1909.86'$
 $T = 69.04'$
 $L = 138.09'$
 $PC = 464+39.85$
 $PT = 465+08.99$
 $PI = 465+77.98$

CURVE DATA W5
 $\Delta = 14^{\circ}03'02''$
 $D = 7^{\circ}30'00''$
 $R = 763.94'$
 $T = 92.14'$
 $L = 187.34'$
 $E = 5.78'$
 $PC = 107+39.08$
 $PT = 108+33.22$
 $PI = 109+26.42$

CURVE DATA #57A
 $\Delta = 4^{\circ}51'22''$
 $D = 3^{\circ}00'00''$
 $R = 1909.86'$
 $T = 80.98'$
 $L = 161.87'$
 $E = 1.72'$
 $PC = 53.00$
 $PT = 462+91.04$
 $PI = 53.00$

CURVE DATA #58
 $\Delta = 7^{\circ}30'15''$
 $D = 3^{\circ}00'00''$
 $R = 1909.86'$
 $T = 125.25'$
 $L = 250.14'$
 $E = 4.10'$
 $PC = 33+39.11$
 $PT = 34+64.36$
 $PI = 35+89.25$

CURVE DATA E7
 $\Delta = 8^{\circ}04'48''$
 $D = 5^{\circ}30'00''$
 $R = 1041.74'$
 $T = 73.58'$
 $L = 146.91'$
 $E = 2.60'$
 $PC = 461+90.03$
 $PT = 462+63.61$
 $PI = 463+53.64$

CURVE DATA E-5A
 $\Delta = 4^{\circ}08'25''$
 $D = 6^{\circ}15'00''$
 $R = 916.73'$
 $T = 33.14'$
 $L = 66.28'$
 $PC = 112+10.97$
 $PT = 112+44.10$
 $PI = 112+77.21$

CURVE DATA WB
 $\Delta = 4^{\circ}32'50''$
 $D = 2^{\circ}00'00''$
 $R = 2864.79'$
 $T = 113.74'$
 $L = 227.36'$
 $E = 2.26'$
 $PC = 115+73.99$
 $PT = 116+87.73$
 $PI = 118+01.35$

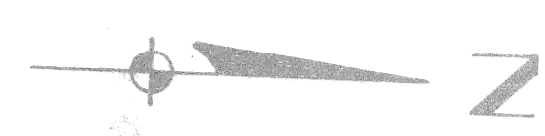
CURVE DATA #G1
 $\Delta = 3^{\circ}36'50''$
 $D = 1^{\circ}30'00''$
 $R = 3819.72'$
 $T = 120.50'$
 $L = 240.93'$
 $E = 1.90'$
 $PC = 8+75.45$
 $PT = 9+95.96$
 $PI = 11+16.38$

CURVE DATA #S-10
 $\Delta = 2^{\circ}00'00''$
 $D = 2^{\circ}00'00''$
 $R = 2864.79'$
 $T = 50.01'$
 $L = 100.00'$
 $E = 0.44'$
 $PC = 421+467.30$
 $PT = 421+467.30$
 $PI = 421+467.30$

FOR ADDITIONAL ROW INFORMATION SEE SPECIAL DETAIL SHEET NO. 532

C.S.R. 11-15-14 # 4, 2 1/2" Prop. Areas P.L. 49
C.S.R. 4-3-52 # 10, 2 1/2" Prop. Areas P.L. 49
C.S.R. 8-22-58 # 11, 2 1/2" Prop. Areas P.L. 49

B. P. R. DIV. NO.	STATE	PROJ. NO.	FISCAL YEAR	SHEET NO.	TOTAL SHEETS
4	MICH.				
ROUTE	STATE PROJECT	COUNTY	CITY	SHEET NO.	TOTAL SHEETS
T-36	B2123A	WAYNE	DETROIT	525	
B. P. R. DIV. NO.	STATE	PROJ. NO.	FISCAL YEAR	SHEET NO.	TOTAL SHEETS
4	MICH.				
ROUTE	STATE PROJECT	COUNTY	CITY	SHEET NO.	TOTAL SHEETS



SUNNYBROOK GARDENS SUB'N. NO.1

ASHTON AVE. 80' WD.
N 01°46'22"W

DAVISON AVE. 50' WD.
N 88°12'04"E

MASSEY FERGUSON

66

PROP. R.O.W. FOR PEDESTRIAN BRIDGE (See Sheet 533)

CURVE DATA W9
 $\Delta = 02^\circ44'01''$
 $D = 02^\circ00'00''$
 $R = 2864.79'$
 $T = 68.35'$
 $L = 136.68'$
 $E = 0.82'$
 $PC = 474+73.53$
 $PI = 475+41.88$
 $PT = 476+10.21$

CURVE DATA #5-11
 $\Delta = 02^\circ50'07''$
 $D = 2^\circ00'00''$
 $R = 2864.79'$
 $T = 70.90'$
 $L = 141.76'$
 $E = 0.88'$
 $PC = 3+72.06$
 $PI = 4+42.96$
 $PT = 5+13.83$

CURVE DATA S14
 $\Delta = 2^\circ41'36''$
 $D = 0^\circ30'$
 $R = 11459.16'$
 $T = 269.38'$
 $L = 538.67'$
 $E = 3.17'$
 $PC = 469+68.73$
 $PI = 472+38.11$
 $PT = 475+07.39$

CURVE DATA #60
 $\Delta = 5^\circ10'17''$
 $D = 2^\circ00'00''$
 $R = 2864.79'$
 $T = 129.37'$
 $L = 258.57'$
 $E = 2.92'$
 $PC = 43+02.73$
 $PI = 44+32.10$
 $PT = 45+6.30$

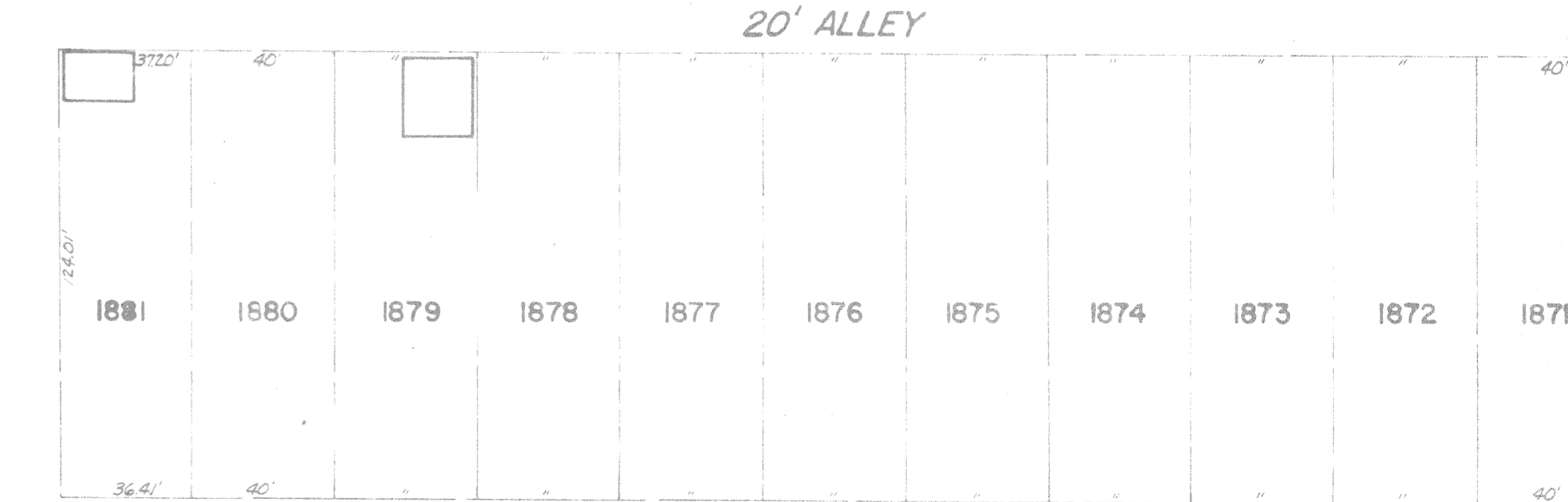
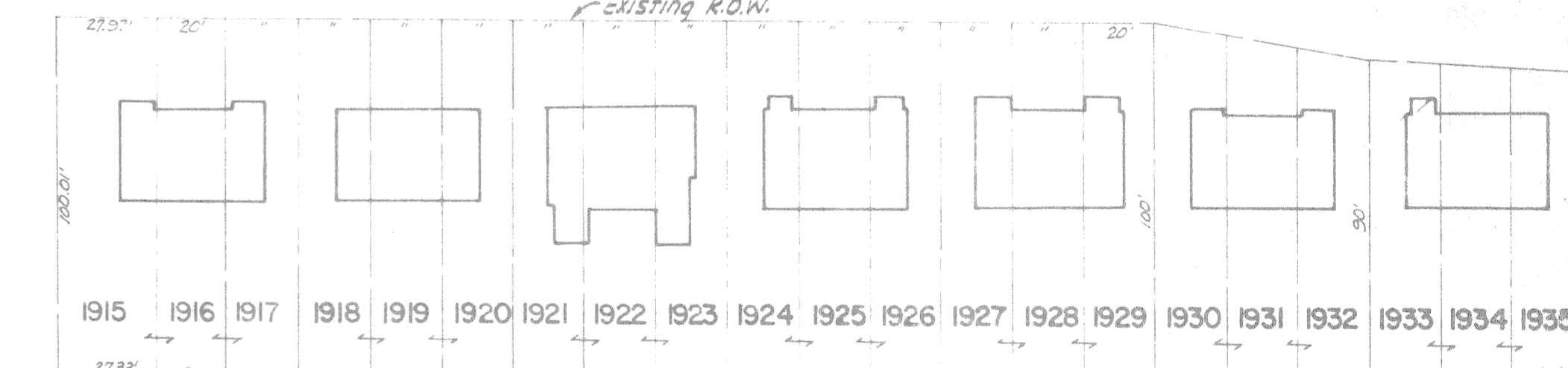
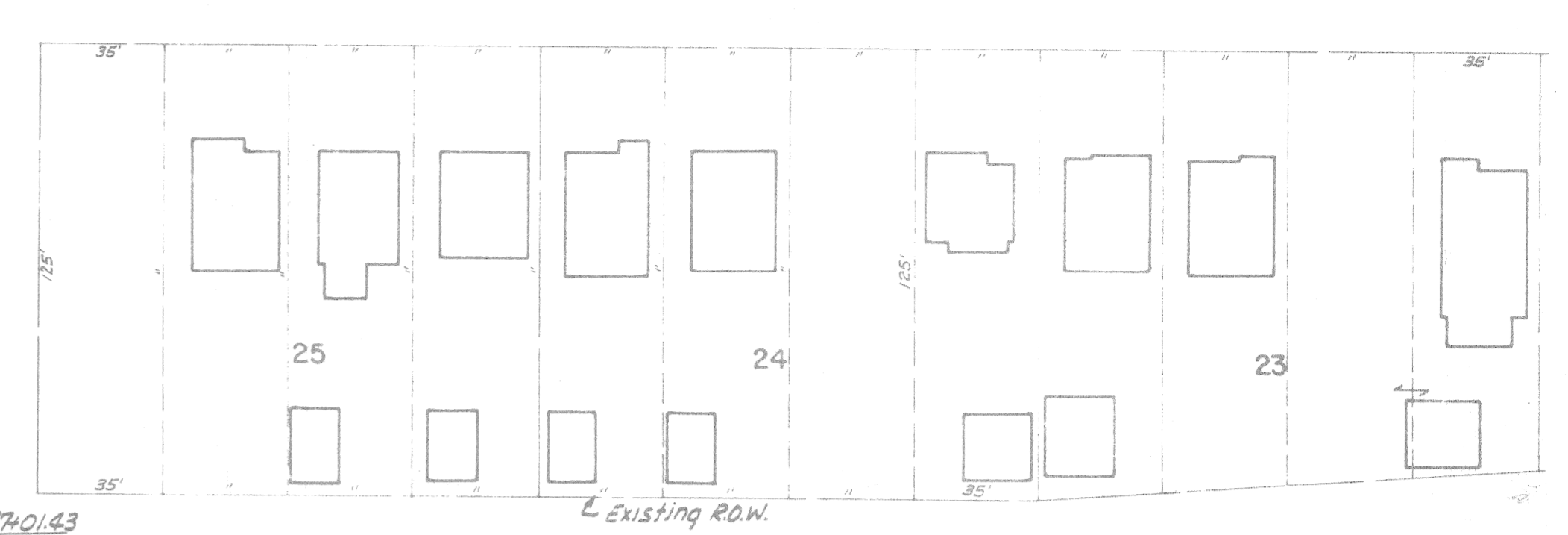
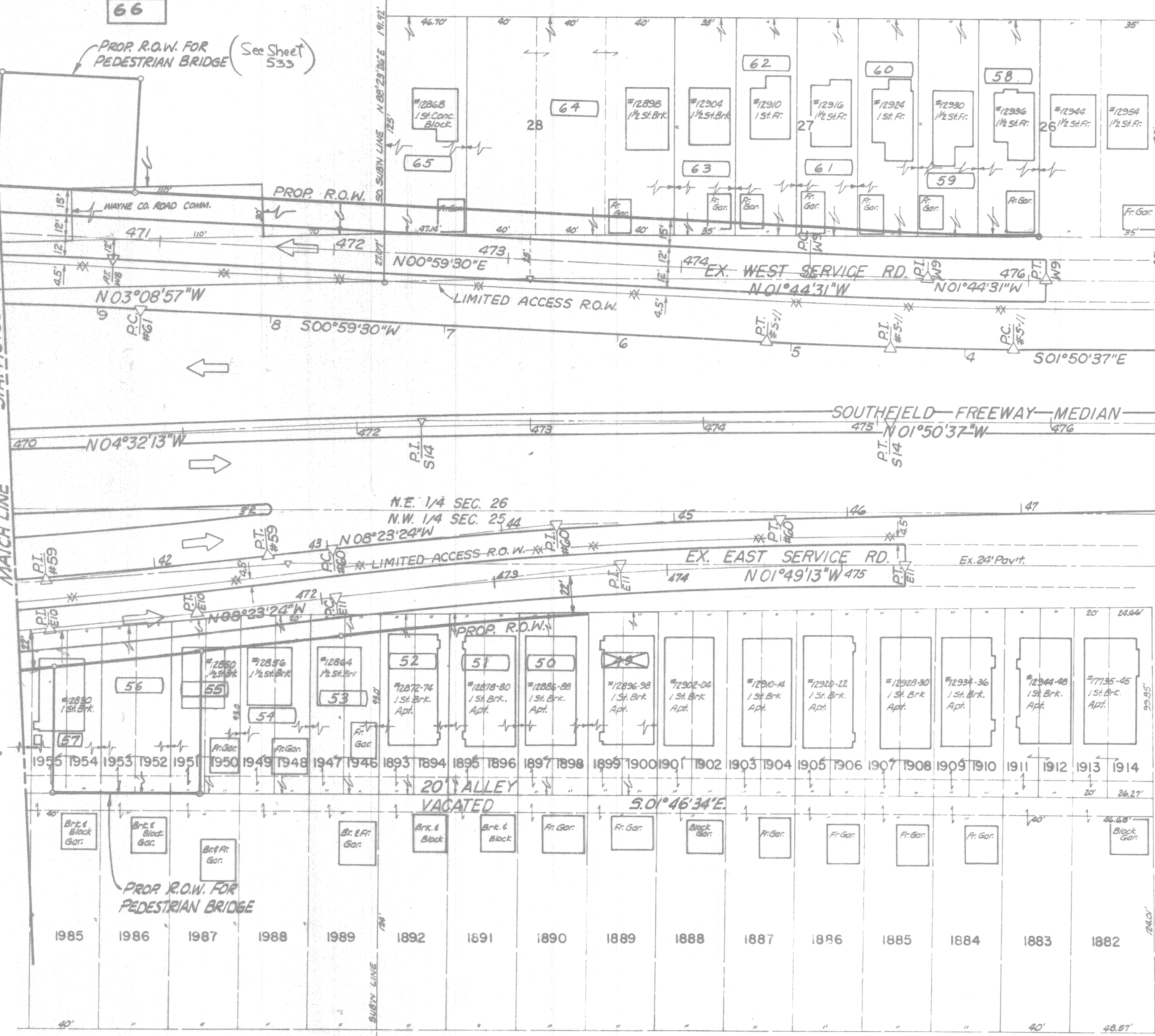
CURVE DATA #59
 $\Delta = 3^\circ51'11''$
 $D = 1^\circ30'00''$
 $R = 3819.72'$
 $T = 128.48'$
 $L = 256.87'$
 $E = 2.16'$
 $PC = 40+08.67$
 $PI = 41+37.15$
 $PT = 42+65.54$

CURVE DATA E10
 $\Delta = 2^\circ32'00''$
 $D = 1^\circ30'00''$
 $R = 3819.72'$
 $T = 84.46'$
 $L = 168.89'$
 $E = 0.93'$
 $PC = 469+57.95$
 $PI = 470+42.41$
 $PT = 471+26.84$

CURVE DATA E11
 $\Delta = 6^\circ34'11''$
 $D = 2^\circ00'00''$
 $R = 2864.79'$
 $T = 164.42'$
 $L = 328.49'$
 $E = 4.71'$
 $PC = 472+08.02$
 $PI = 473+72.45$
 $PT = 475+36.51$

CURVE DATA #5-12
 $\Delta = 1^\circ22'30''$
 $D = 2^\circ00'00''$
 $R = 2864.79'$
 $T = 34.38'$
 $L = 68.75'$
 $E = 0.21'$
 $PC = 50+69.96$
 $PI = 51+24.34$
 $PT = 51+58.71$

MATCH LINE STA. 470+00



FOR ADDITIONAL R.O.W. INFORMATION SEE SPECIAL DETAIL SHEET NO. 533

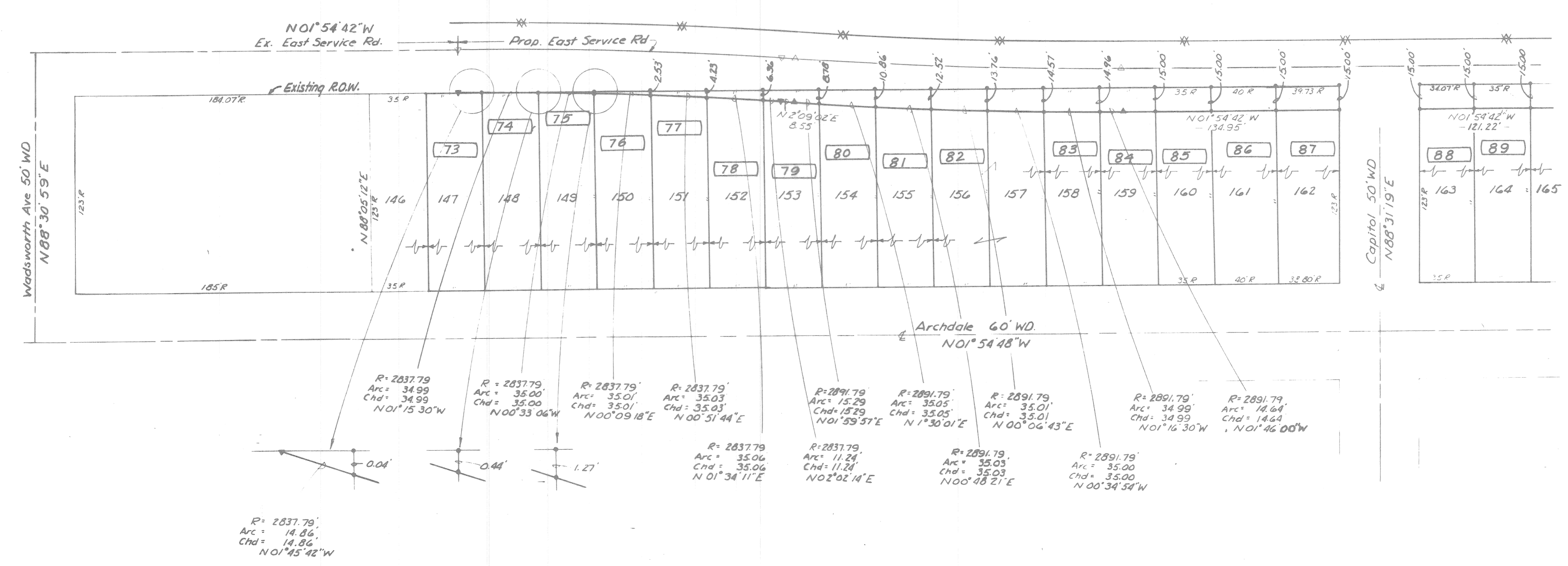
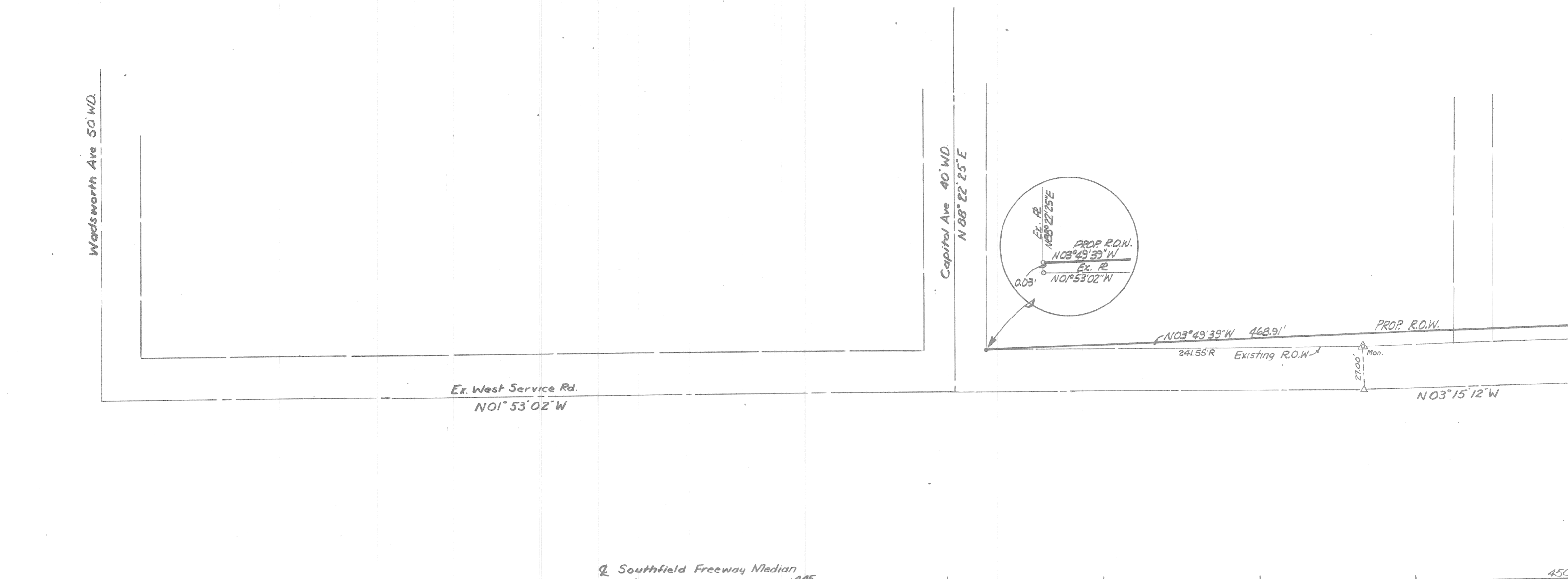
GRANDMONT SUB'N. NO.3

GRANDMONT SUB'N. NO.2

ARCHDALE AVE. 60' WD.
N 01°45'32"W

CSR 4-3-67 Final ROW
 CSR 5-1-68 Resub

R.P.R. DIV. NO.	STATE	PROJ. NO.	FISCAL YEAR	SHEET NO.	TOTAL SHEETS
4	MICH.				
ROUTE	STATE PROJECT	COUNTY		SHEET NO.	TOTAL SHEETS
T-96	82123A	WAYNE DETROIT		530	
R.P.R. DIV. NO.	STATE	PROJ. NO.	FISCAL YEAR	SHEET NO.	TOTAL SHEETS
4	MICH.				
ROUTE	STATE PROJECT	COUNTY		SHEET NO.	TOTAL SHEETS



Legend:
 — Prop. R.O.W.
 --- L.A.R.O.W.