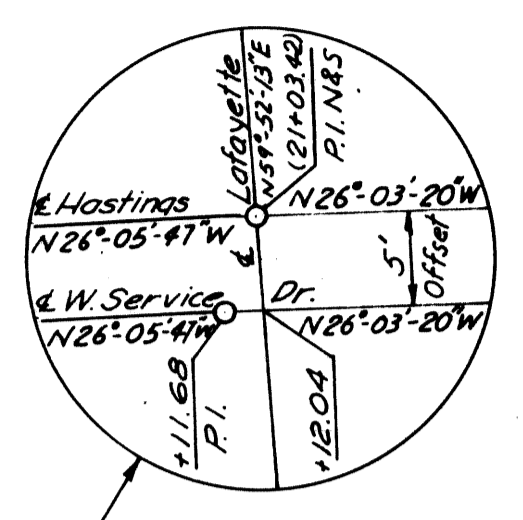


DATE	8/75
BY	M.C. GIAN
PLAN DESIGNED	
PLAN CHECKED	
PLAN REVISION	
SQUAD LEADER	
RECOMMENDED FOR APPROVAL	

PLANS PREPARED BY  
CITY OF DETROIT  
DEPARTMENT OF PUBLIC WORKS  
CITY ENGINEERS OFFICE  
BUREAU OF HIGHWAYS AND EXPRESSWAYS

**Off Ramp Curve Data**  
 $\Delta = 6^{\circ}-41'-52''$   
 $D = 5^{\circ}-00'-00''$   
 $R = 1145.92'$   
 $T = 67.05'$   
 $L = 133.96'$   
 $P.C. = 31+97.28$   
 $P.T. = 33+31.24$   
 $E = 1.96'$

C.B.M.\*17 Elev. 121.348 Arrow on hydrant  
S.W. corner of St. Antoine and Lafayette.  
C.B.M.\*18 Elev. 122.386 Arrow on hydrant  
W. side of St. Antoine, 20 N. of Monroe.  
C.B.M.\*33 Elev. 121.741 Arrow on hydrant  
S.W. corner of Lafayette and Hastings.



C.B.M.\*19 Elev. 123.279 Arrow on hydrant  
N.W. corner of St. Antoine and Macomb.

**Off Ramp Curve Data**  
 $\Delta = 7^{\circ}-43'-44''$   
 $D = 3^{\circ}-00'-00''$   
 $R = 1909.86'$   
 $T = 129.01'$   
 $L = 257.63'$   
 $P.C. = 38+50.76$   
 $P.T. = 41+08.39$   
 $E = 4.35'$

C.B.M.\*34 Elev. 123.249 Arrow on hydrant  
E. side of Hastings on the S. line of Clinton  
Extended.

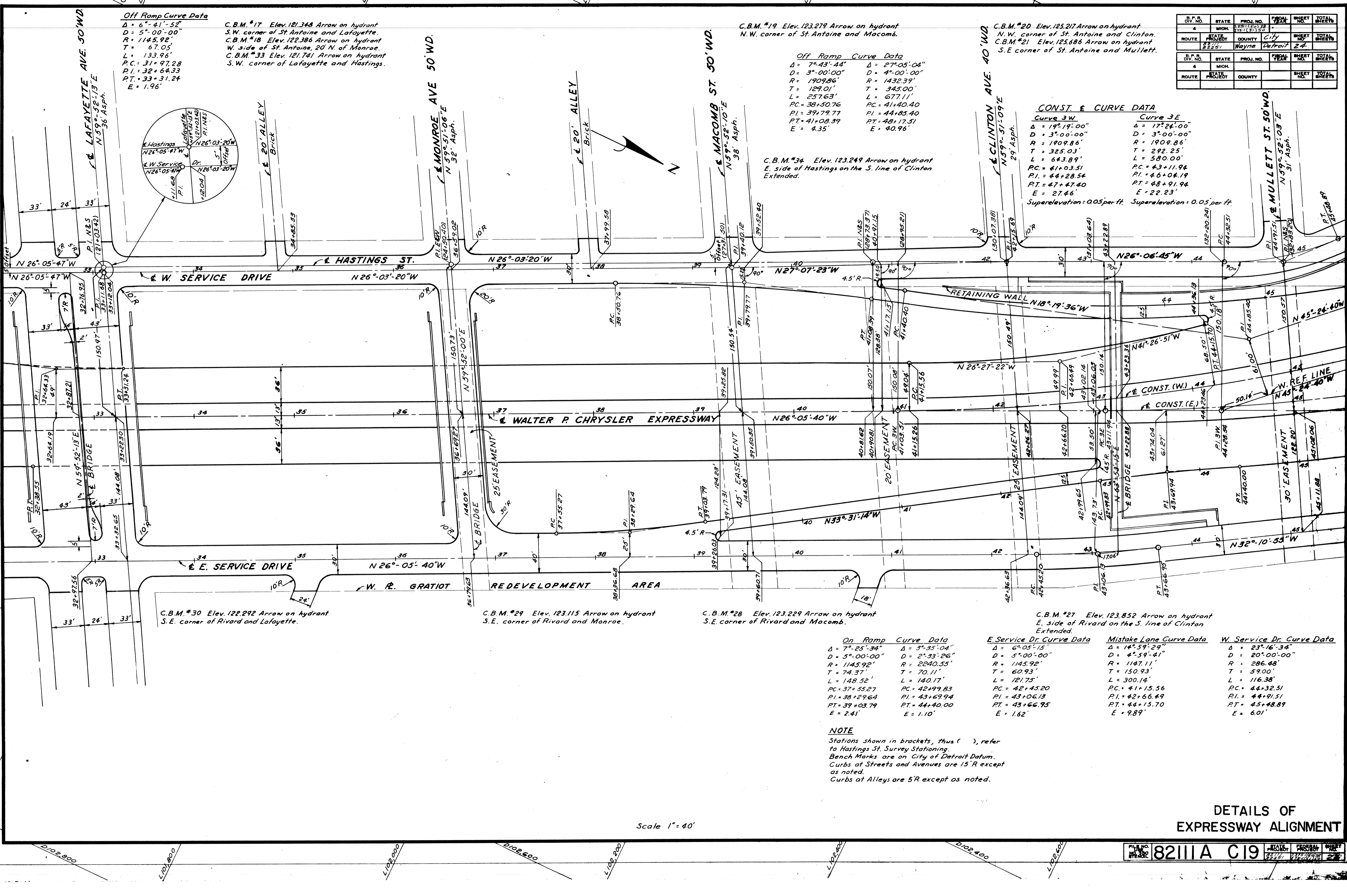
C.B.M.\*20 Elev. 125.217 Arrow on hydrant  
N.W. corner of St. Antoine and Clinton.  
C.B.M.\*21 Elev. 125.886 Arrow on hydrant  
S.E. corner of St. Antoine and Mullett.

**CONST. & CURVE DATA**

Curve 3W		Curve 3E	
$\Delta = 19^{\circ}-19'-00''$	$\Delta = 17^{\circ}-24'-00''$	$\Delta = 17^{\circ}-24'-00''$	$\Delta = 17^{\circ}-24'-00''$
$D = 3^{\circ}-00'-00''$	$D = 3^{\circ}-00'-00''$	$D = 3^{\circ}-00'-00''$	$D = 3^{\circ}-00'-00''$
$R = 1909.86'$	$R = 1909.86'$	$R = 1909.86'$	$R = 1909.86'$
$T = 325.03'$	$T = 292.25'$	$T = 292.25'$	$T = 292.25'$
$L = 643.89'$	$L = 580.00'$	$L = 580.00'$	$L = 580.00'$
$P.C. = 41+03.51$	$P.C. = 43+11.94$	$P.C. = 43+11.94$	$P.C. = 43+11.94$
$P.T. = 44+28.54$	$P.T. = 46+04.19$	$P.T. = 46+04.19$	$P.T. = 46+04.19$
$E = 27.46'$	$E = 22.23'$	$E = 22.23'$	$E = 22.23'$

Superelevation = 0.05 per ft. Superelevation = 0.05 per ft.

DIV. NO.	STATE	PROJ. NO.	FISCAL YEAR	SHEET NO.	TOTAL SHEETS
4	MICH.	3381(60)28	1975	24	24
ROUTE	PROJECT	COUNTY	CITY	SHEET NO.	TOTAL SHEETS
2825	Wayne	Detroit		24	24



**On Ramp Curve Data**  
 $\Delta = 7^{\circ}-25'-34''$   
 $D = 5^{\circ}-00'-00''$   
 $R = 1145.92'$   
 $T = 74.37'$   
 $L = 148.52'$   
 $P.C. = 37+55.27$   
 $P.T. = 39+03.79$   
 $E = 2.41'$

**E. Service Dr. Curve Data**  
 $\Delta = 6^{\circ}-05'-15''$   
 $D = 5^{\circ}-00'-00''$   
 $R = 1145.92'$   
 $T = 60.93'$   
 $L = 121.75'$   
 $P.C. = 42+45.20$   
 $P.T. = 43+06.13$   
 $E = 1.62'$

**Mistake Lane Curve Data**  
 $\Delta = 14^{\circ}-59'-29''$   
 $D = 4^{\circ}-59'-41''$   
 $R = 1147.11'$   
 $T = 150.93'$   
 $L = 300.14'$   
 $P.C. = 41+15.56$   
 $P.T. = 42+66.49$   
 $E = 9.89'$

**W. Service Dr. Curve Data**  
 $\Delta = 23^{\circ}-16'-34''$   
 $D = 20^{\circ}-00'-00''$   
 $R = 286.48'$   
 $T = 59.00'$   
 $L = 116.38'$   
 $P.C. = 44+32.51$   
 $P.T. = 44+91.51$   
 $E = 6.01'$

**NOTE**  
Stations in brackets, thus ( ), refer to Hastings St. Survey Stationing.  
Bench Marks are on City of Detroit Datum.  
Curbs at Streets and Avenues are 15' R except as noted.  
Curbs at Alleys are 5' R except as noted.

Scale 1" = 40'

DETAILS OF EXPRESSWAY ALIGNMENT

FILE NO.	82111A C19
DATE	8/75
BY	M.C. GIAN
CHECKED	
APPROVED	