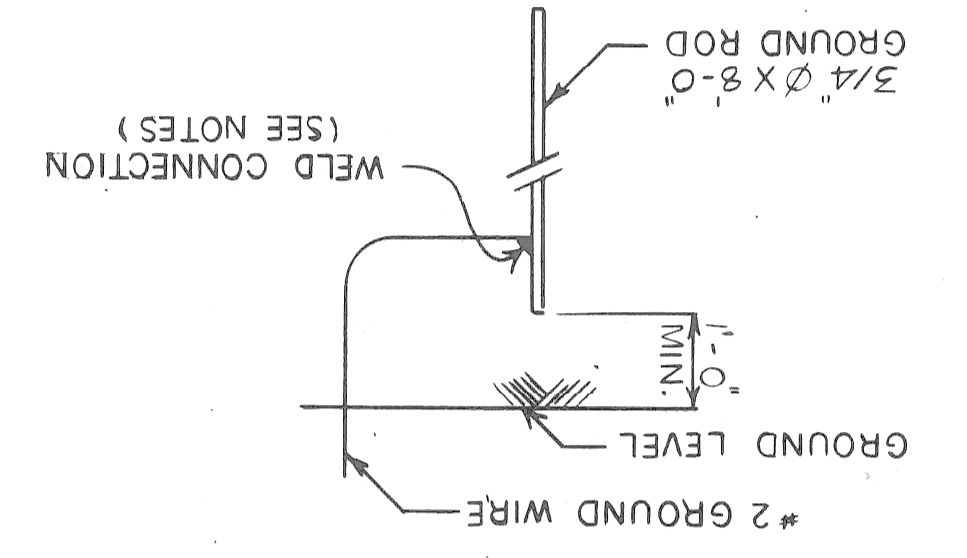


ITEM	UNIT	AMOUNT
PEDESTRIAN FENCING - STRUCTURES	S.F.T.	1652
ELECTRICAL GROUNDING SYSTEM	EACH	1

MISCELLANEOUS QUANTITIES

GROUND ROD SHALL BE STEEL, COPPER CLAD ROD 3/4" MIN. DIA. AND 8'-0" LONG.  
 COPPER WIRE FOR ELECTRICAL PURPOSES.  
 GROUND WIRE SHALL BE BARE #2 AWG AND SHALL CONFORM TO THE LATEST REVISION OF THE APPLICABLE CURRENT ASTM SPECIFICATION ASTM B 33 FOR TINNED SOFT OR ANNEALED  
 EXPOSED CONNECTIONS MAY BE SPLIT BOLT OR CLAMP TYPE.  
 ALL UNDERGROUND CONNECTIONS SHALL BE MADE BY GADWELD, THERMITE, GAS OR ARC WELD.  
 MAINTAIN ONE FOOT MINIMUM COVER OVER GROUND WIRE AND GROUND ROD.



GROUNDING NOTES AND DETAIL

EXPANSION ANCHORED BOLTS OF THE SIZE INDICATED SHALL BE BETHLEHEM MINE ROOF EXPANSION TYPE WITH K-1 SHELL, PHILLIPS RED HEAD SELF DRILLING CONCRETE ANCHORS, CHICAGO EXPANSION BOLT CO., SPECIAL SELF DRILLING ANCHOR OR APPROVED EQUAL.  
 ALL WORK SHALL CONFORM TO THE M.D.O.T SPECIFICATIONS FOR HIGHWAY CONSTRUCTION - 1984 EDITION EXCEPT AS SHOWN OR NOTED ON THE PLAN.  
 THE POSTS SHALL BE 2" X 2" X 1/4" H POSTS AND WEIGHING 4.1 LBS. PER FT. GALVANIZED NOMINAL 1 1/4" Ø PIPE SHALL BE 1 5/8" OUTSIDE DIAMETER, STEEL PIPE OR TUBING WEIGHING 2.27 LBS. PER FT., GALVANIZED.  
 ALL POSTS AND TUBING SHALL BE FURNISHED WITH MANUFACTURER'S STANDARD CONNECTIONS AND ITS MINIMUM WEIGHT SHALL BE WITHIN 5% OF THAT SPECIFIED. POSTS SHALL BE BENT IN THE SHOP AS SHOWN ON THE PLANS.  
 ALL COMPONENTS ARE TO BE GALVANIZED IN ACCORDANCE WITH ASTM A-153 AFTER FABRICATION.  
 FABRIC FASTENERS SHALL BE DOUBLE TWISTED #9 GAUGE GALVANIZED STEEL.  
 ALL FABRIC OR CHAIN LINK FENCE SHALL BE FURNISHED WITH KNUCKLING AT BOTH SELVAGES.  
 TENSION BARS SHALL BE 3/4" X 1/4" GALVANIZED STEEL.  
 FENCE FABRIC SHALL BE GALVANIZED, #9 GAUGE WITH A 1" MESH.  
 THE BID ITEM 'PEDESTRIAN FENCING - STRUCTURES' SHALL INCLUDE THE FABRIC, POSTS, BRACES, ANCHORED BOLTS, PIPE, BRACKETS, BASE PLATES AND ALL SUITABLE CONNECTIONS AND FITTINGS.  
 THE CONTRACTOR WILL BE FURNISHED WITH PLANS OF THE EXISTING STRUCTURE IF REQUESTED. HE SHALL ALSO VERIFY FIELD CONDITIONS BEFORE FABRICATION.  
 THE PAY LIMITS FOR 'PEDESTRIAN FENCING - STRUCTURES' IS MEASURED FROM THE TOP OF SIDEWALK TO TOP RAIL OF FENCE.  
 CARE SHALL BE TAKEN SO THAT DEBRIS DOES NOT FALL FROM STRUCTURE.  
 WHERE SIGNS MOUNTED ON BRIDGE FASCIA'S INTERFERE WITH CONSTRUCTION, THEY SHALL BE REMOVED AND RESET AT THE CONTRACTOR'S EXPENSE.  
 CARE IS TO BE TAKEN IN PLACING ANCHORED BOLTS AND BRACKETS SO AS TO INSURE THAT THE BRACKETS HOLD THE POSTS FIRMLY AGAINST STEEL POSTS, SHIM IF NECESSARY.

date 10-1-87  
 sheet 2 of 4  
 contract no. a.o.-87-22-21  
 SO5 OF 82111  
 IN DETROIT (1-375)  
 EXPRESSWAY W.P. CHRYSLER  
 CROSS OVER JEFFERSON  
 PROTECTIVE SCREENING BRIDGE  
 CITY OF DETROIT  
 city engineering department  
 for MICHIGAN DEPARTMENT OF TRANSPORTATION  
 approved: [Signature]  
 checked by H. DICKOW  
 drawn by H. DICKOW  
 revisions table with columns for no., description, and date.



505 604 82111  
 B1882 of 82-22-18  
 ENGINEER OF DESIGN - CONSULTANTS  
 APPROVED: *[Signature]* 10-2-60  
 COORDINATING ENGINEER  
 APPROVED: *[Signature]* 10-2-60  
 GENERAL PLAN OF STRUCTURE  
 WALTER P. CHRYSLER EXPRESSWAY IN DETROIT  
 JEFFERSON AVE. AND HASTINGS ST. BRIDGES CROSSING THE  
 MICHIGAN STATE HIGHWAY DEPARTMENT  
 CONTROL SECTION 8211-3012

PLANS PREPARED BY  
 CITY OF DETROIT  
 DEPARTMENT OF PUBLIC WORKS  
 CITY ENGINEERS OFFICE  
 BUREAU OF HIGHWAYS AND EXPRESSWAYS  
 JOB NO. *[Blank]*  
 DRAWING NO. *[Blank]*  
 REVISIONS  
 NO. DATE BY  
 APPROVED FOR APPROVAL  
 ST. MASON  
 CIVIL ENGINEER  
 FMB97A(5)

Work This Sheet With Sheets Major # N9103

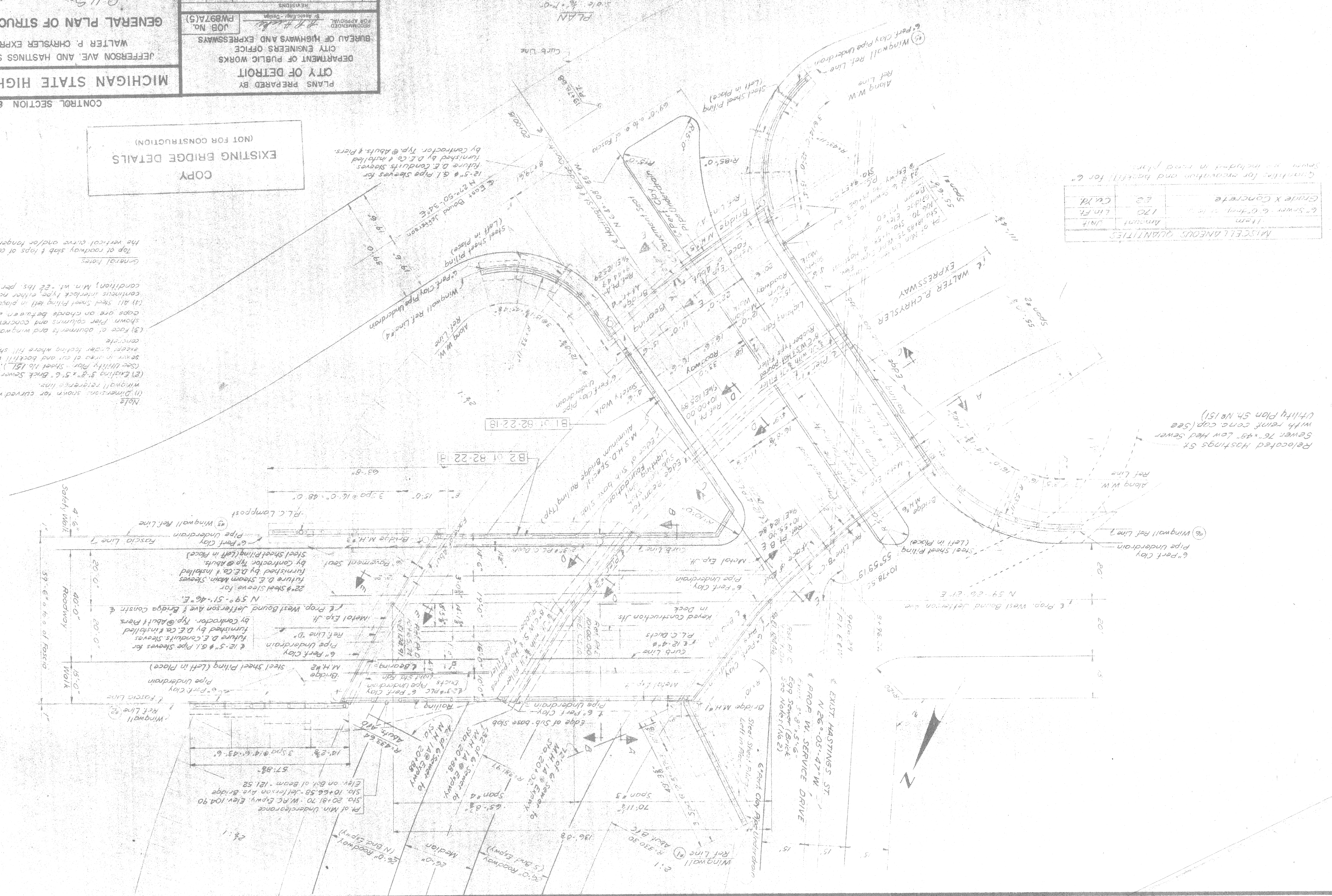
COPY  
 EXISTING BRIDGE DETAILS  
 (NOT FOR CONSTRUCTION)

NOTE  
 (1) Dimensions shown for curved wingwalls are along wingwall reference line.  
 (2) Existing 3'-8" x 5'-6" Brick Sewer is to be abandoned.  
 (3) Utility Plan - Sheet No. 151. Remove abandoned sewer in area of cut and backfill with yellow clay.  
 (4) Face of abutments and wingwalls are curved as shown. Pier columns and concrete girders of pier caps are on chords between 2' open joints.  
 (5) All steel sheet piling will in place shall be of the condition, Min. wt. 22 lbs. per sq. ft.  
 General Notes  
 Top of roadway slab & tops of curbs are parallel to the vertical curve and/or tangents.

MISCELLANEOUS QUANTITIES

Item	Unit	Amount	L in Ft.	CU Yd.
6" Sewer - 6'0" long	L in Ft.	170		
Grade X Concrete	CU Yd.	62		

Quantities for excavation and backfill for 6" Sewer are included in main plans.



Relocated Hastings St. Sewer 76" x 45" Low Head Sewer with reinf. conc. cap (see Utility Plan Sh. No. 151)



APPROVED: *[Signature]*  
 ENGINEER OF DESIGN CONSULTANTS  
 APPROVED: *[Signature]*  
 COORDINATING ENGINEER  
**GENERAL PLAN OF STRUCTURE**  
 WALTER P. CHRYSLER EXPRESSWAY IN DETROIT  
 JEFFERSON AVE. AND HASTINGS ST. BRIDGES CROSSING THE

**MICHIGAN STATE HIGHWAY DEPARTMENT**  
 CONTROL SECTION 82111-30102  
 (NOT FOR CONSTRUCTION)  
 EXISTING BRIDGE DETAILS  
 PLANS PREPARED BY  
 CITY ENGINEERS OFFICE  
 BUREAU OF HIGHWAYS AND EXPRESSWAYS  
 JOB NO. PW897A(S)  
 REVISIONS  
 NO. DATE DESCRIPTION  
 0 Miss. Revisions

**WINGWALL SCHEDULE**

Wingwall No.	Span	Length	Height	Top	Bottom	Notes
1	10.0	10.0	10.0	10.0	10.0	
2	10.0	10.0	10.0	10.0	10.0	
3	10.0	10.0	10.0	10.0	10.0	
4	10.0	10.0	10.0	10.0	10.0	
5	10.0	10.0	10.0	10.0	10.0	
6	10.0	10.0	10.0	10.0	10.0	

