

MICHIGAN STATE HIGHWAY DEPARTMENT
 CONTROL SECTION 82024B

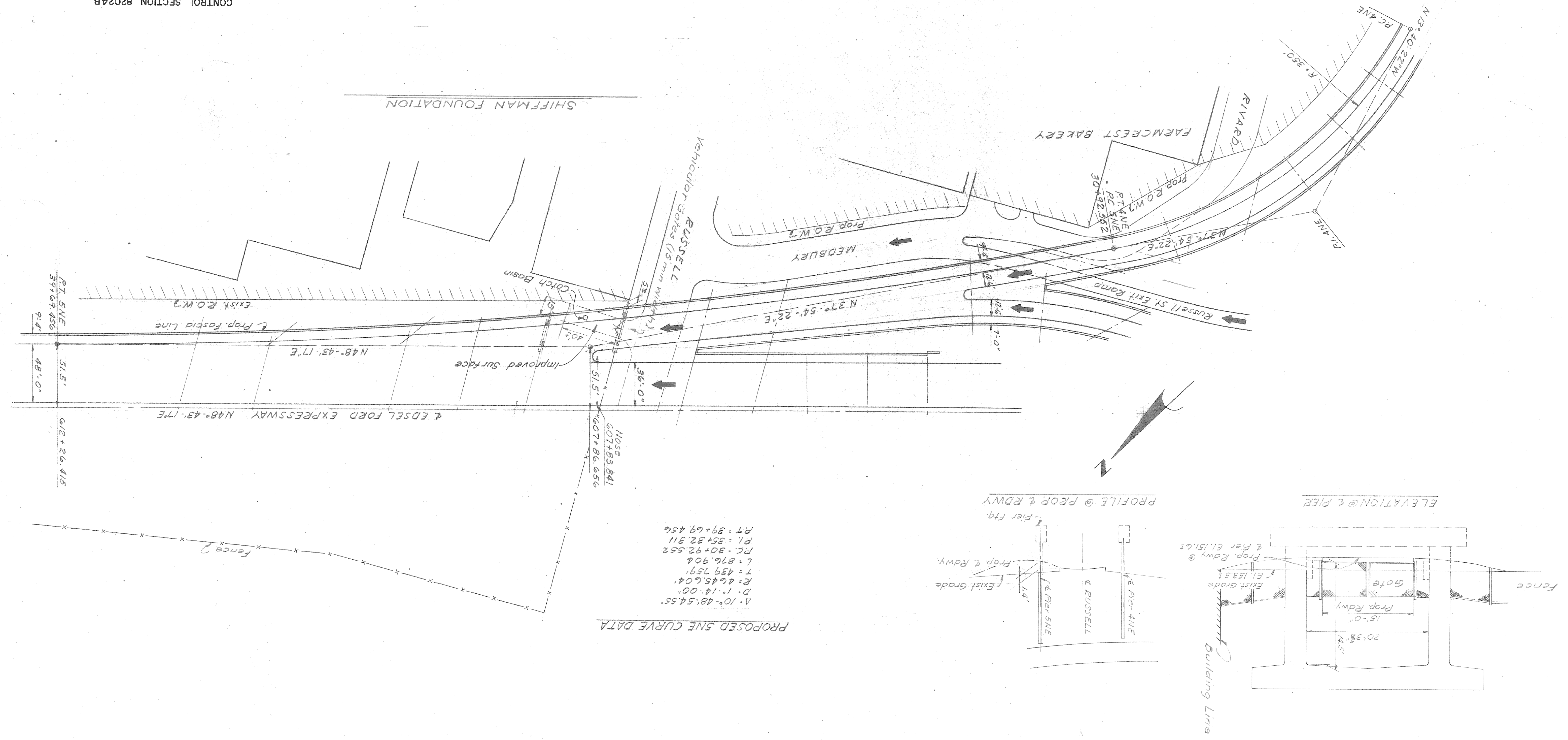
ACCESS TO SHIFFMAN FOUNDATION
 ALTERATION TO TURNING ROADWAY ADDITION
 TO EDEL FORD EXPRESSWAY AT
 DEQUINDRE YARD BRIDGE

DATE: 5/61
 DRAWN BY: E. Kohn
 CHECKED BY: C.C.L.
 SHEET: 1 OF 1

XOI of 82024B

CITY OF DETROIT
 DEPARTMENT OF PUBLIC WORKS
 HIGHWAY & EXPRESSWAY DIVISION

Plan Prepared by:



PROPOSED SNE CURVE DATA

$\Delta = 10^\circ - 48' - 54.55''$
 $D = 1' - 14.00''$
 $E = 4645.604'$
 $T = 439.759'$
 $L = 876.904'$
 $PC = 30+92.552$
 $PI = 35+32.311$
 $PT = 39+69.456$

