

Note:  
Limits of Proposed Pavement, Walks,  
Bridge and Retaining Walls are shown  
by shaded outline.  
Proposed Drainage Structures not shown

Scale: 1" = 40'

407170

Work this sheet with sh.P.2	
STATE FILE	BRIDGE B74 of 82-22-12
	ROAD
STATE PROJECT	82-127
COUNTY JOB	892
ISSUE NO.	6
DATE	8-23-56
SHEET NO.	P-1

REVISIONS	DRAWN BY	CHECKED BY	DATE	APPROVED
1. Revised and Redrawn 11-14-55 P.E. J.K.	P. Epstein	J.H. Chance	10-28-55	<i>J.W. Sarna</i>
2. Revised Woodward to Griswold 3-1-56 P.E. J.K.				
3. Removed Crossings NB, EB, WB Wayne Add Spac. Curb W/ Island 1-11-55 P.E. J.K.				
4. Added Exposed Limits 4-5-56 P.E. J.K.				
5. Moved T.C. to 37' Spacing as Needed				
6. Rev. Existing 7-17-56 P.E. J.K.				

BOARD OF  
**WAYNE COUNTY ROAD COMMISSIONERS**  
DETROIT, MICHIGAN  
W. LAM E. KRISER  
MICHAEL J. O'BRIEN  
COUNTY HIGHWAY ENGINEER

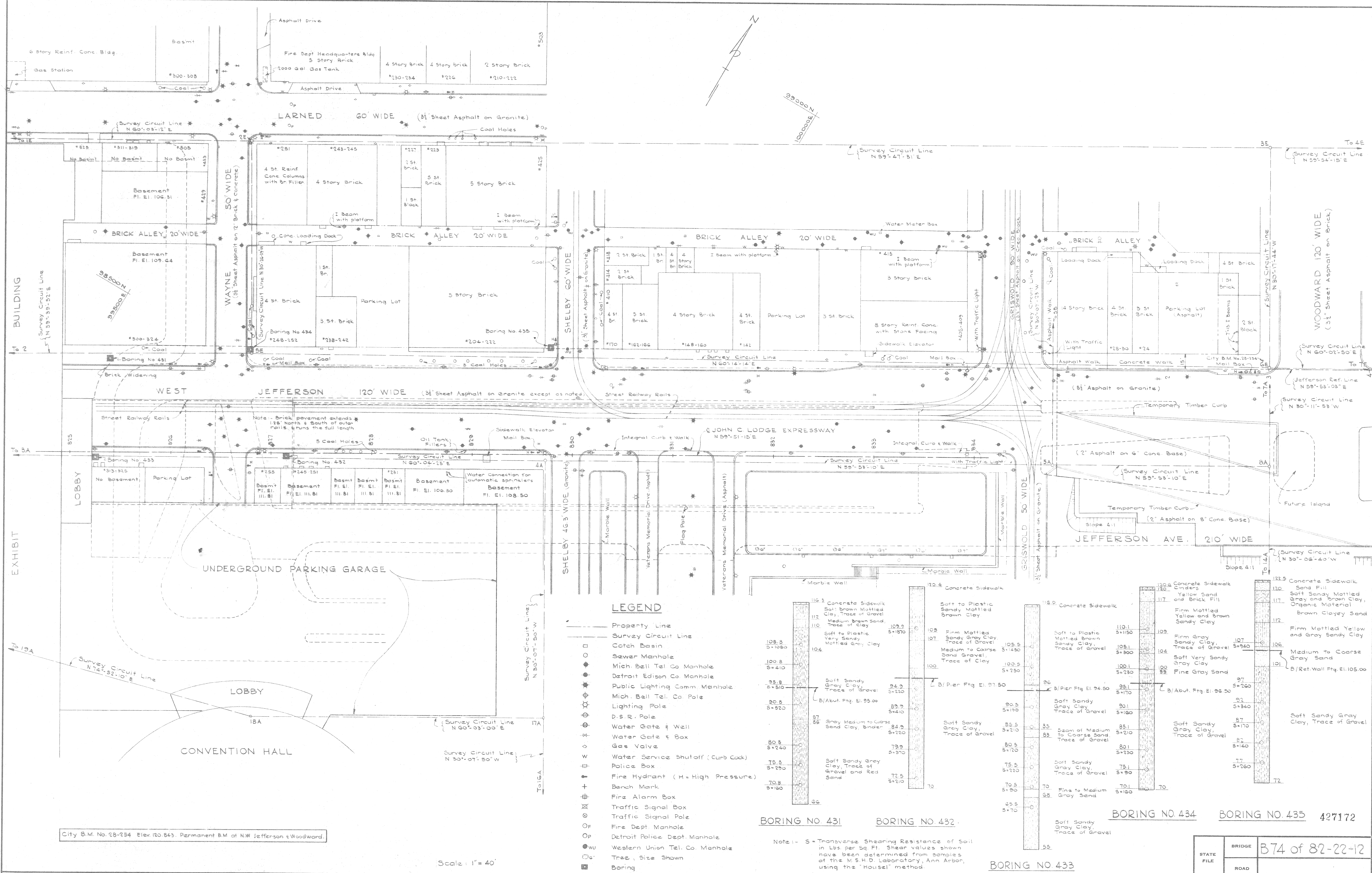
JOHN C. LODGE EXPRESSWAY  
WAYNE STREET CROSSING  
PRELIMINARY GENERAL DRAWING  
PLAN

CHARLES L. WILSON



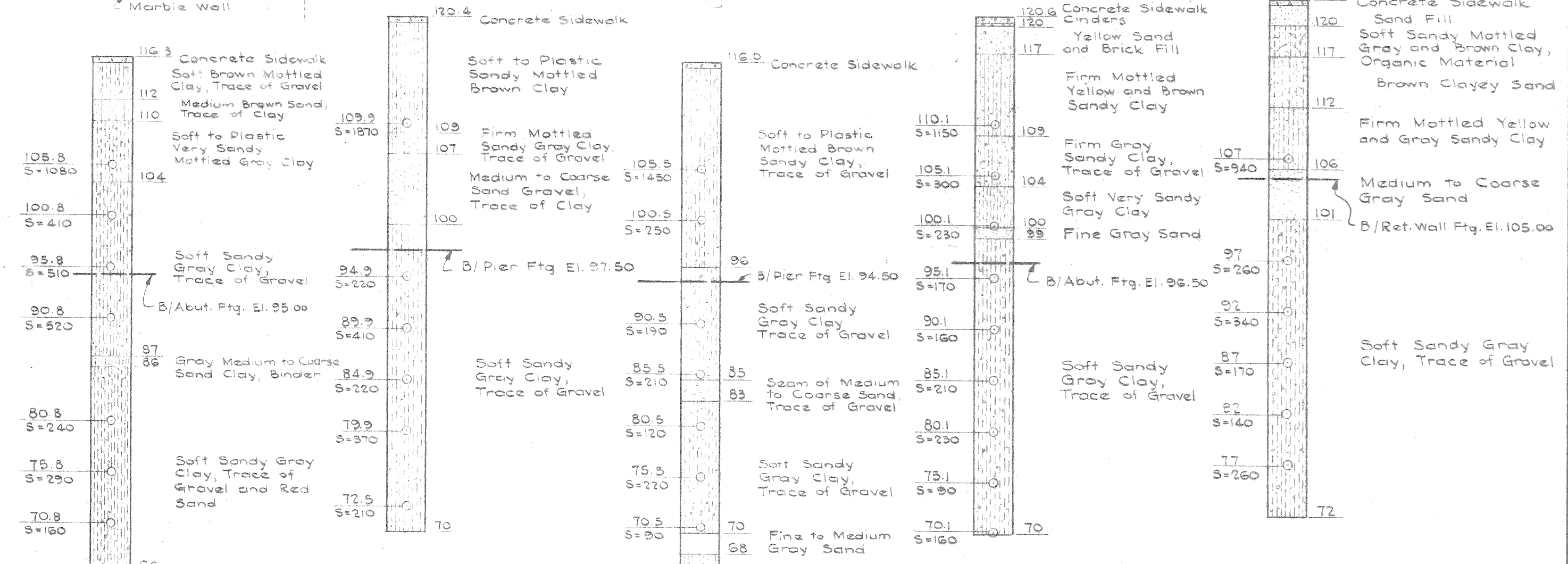






**LEGEND**

- Property Line
- - - Survey Circuit Line
- Catch Basin
- Sewer Manhole
- Mich. Bell Tel. Co. Manhole
- Detroit Edison Co. Manhole
- Public Lighting Comm. Manhole
- Mich. Bell Tel. Co. Pole
- Lighting Pole
- D.S.R. Pole
- Water Gate & Well
- Water Gate & Box
- Gas Valve
- Water Service Shutoff (Curb Cook)
- Police Box
- Fire Hydrant (H = High Pressure)
- Bench Mark
- Fire Alarm Box
- Traffic Signal Box
- Traffic Signal Pole
- Fire Dept. Manhole
- Detroit Police Dept. Manhole
- Western Union Tel. Co. Manhole
- Tree, Size Shown
- Boring



Note: - S = Transverse Shearing Resistance of Soil in Lbs. per Sq. Ft. Shear values shown have been determined from samples of the M.S.H.D. Laboratory, Ann Arbor, using the 'House' method.

City B.M. No. 28-254 Elev. 120.843. Permanent B.M. at NW Jefferson & Woodward.

Scale: 1" = 40'

REVISIONS	DRAWN BY	CHECKED BY	DATE	APPROVED
	B. Chmielinski	R. Leyon	3-12-56	<i>J. W. Bunn</i>
	CORRECT			
	<i>J.C. Ward</i>			
	ENGINEER OF DESIGN, STRUCTURES AND EXPRESSWAYS			
	COUNTY HIGHWAY ENGINEER			

**WAYNE COUNTY ROAD COMMISSIONERS**

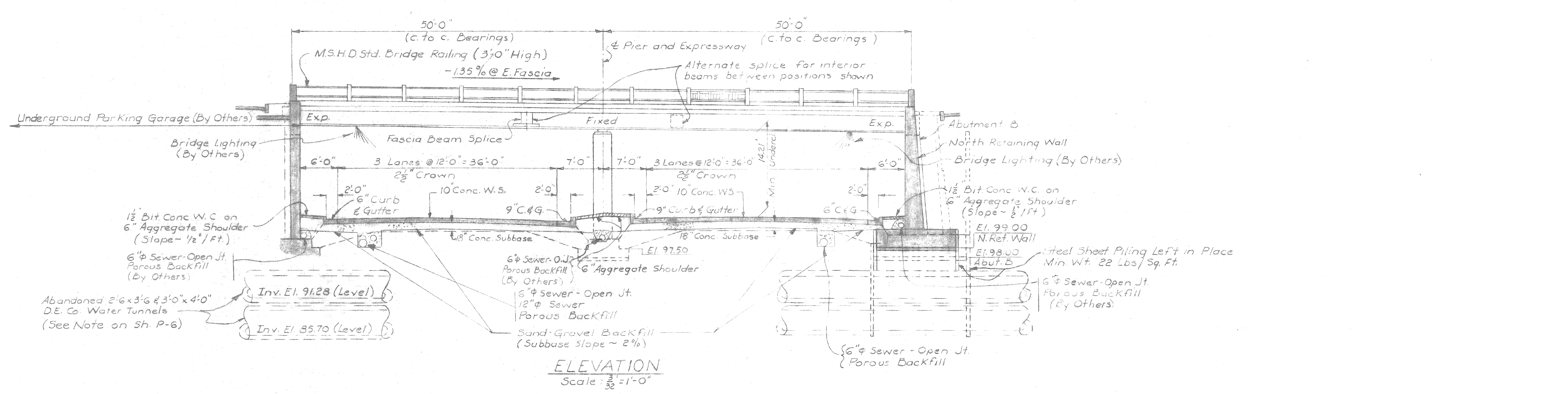
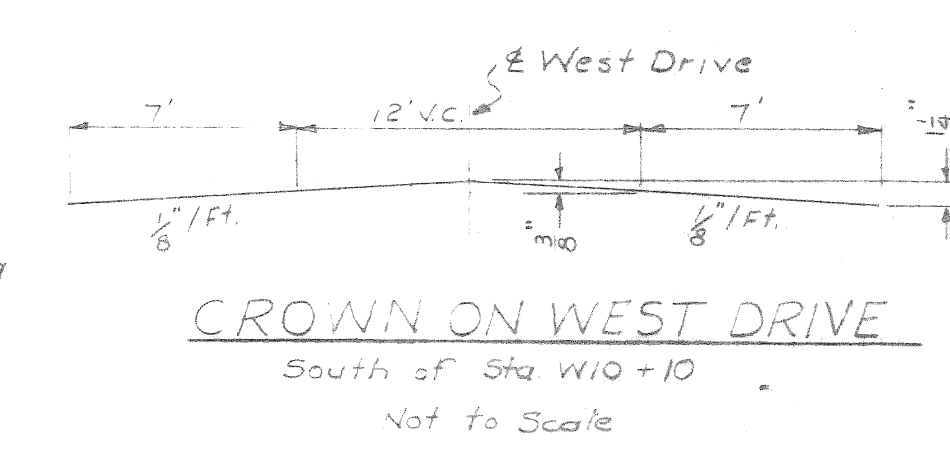
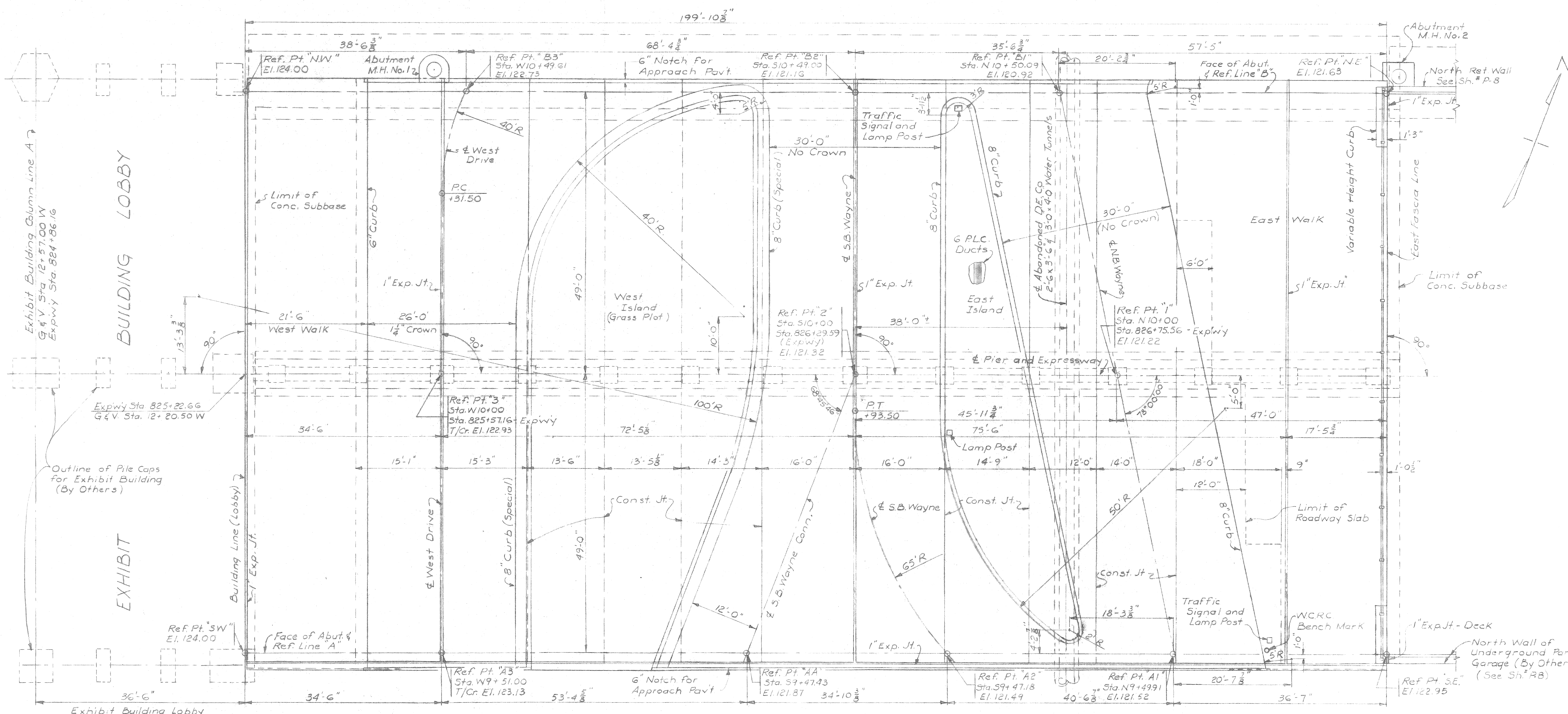
BOARD OF  
DETROIT, MICHIGAN

MICHAEL J. O'BRIEN      WILLIAM E. KREGER      CHARLES L. WILSON

**JOHN C. LODGE EXPRESSWAY  
WAYNE STREET CROSSING  
SURVEY PLAN**

STATE PROJECT	BRIDGE	B74 of 82-22-12
82-127	ROAD	
ISSUE NO. 1	COUNTY JOB	892
DATE 8-23-56	SHEET NO.	P-3





**FOOTING PRESSURES**  
(With Reinforced Concrete Subbase)  
Lbs. per Sq. Ft.

Structure	Max. Toe From DL	Allowable R=1.0	Max. Toe From DL+LL	Allowable R=1.5	Average DL	Average DL+LL
Abutment B	2640	2900	3010	3760	2470	2680
Pier	2230	2660	2410	3690	2230	2410

**GENERAL NOTES**

Design: Michigan State Highway Department's Specification for the Design of Highway Bridges, 1936 Edition (H-20-516-44 and Special Military Loading)  
Max. Live Load plus Impact Deflection not more than 1/1000 of the span length  
Concrete: Grade A

Note  
All Expressway Paving, Curbing, and Surfacing except Concrete Subbase, shown on this Elevation will be done by Others

427179

Work this sheet with Sh. P-6

**REVISIONS**

② Reviewer's Revisions JHC 4-6-56/P.E. Moved Ref. Lines 42 & 43. JHC 4-7-56/P.E. Added Lamp Posts and Traffic Signal at 42.5.	Added Soil Pressures from East Walk and West Island. J.H.C. 7-5-56/P.E. Revised South End of Deck JHC 8-7-56/P.E. Revised 8' Lane Approach Subbase and Lamp Post
---	--

DRAWN BY J.H. Chance	CHECKED BY P. Epstein	DATE 1-12-56	APPROVED <i>J.W. Burns</i> ENGINEER OF BRIDGES AND STRUCTURES
CORRECT <i>J.P. Wood</i>			APPROVED COUNTY HIGHWAY ENGINEER

BOARD OF  
**WAYNE COUNTY ROAD COMMISSIONERS**  
DETROIT, MICHIGAN

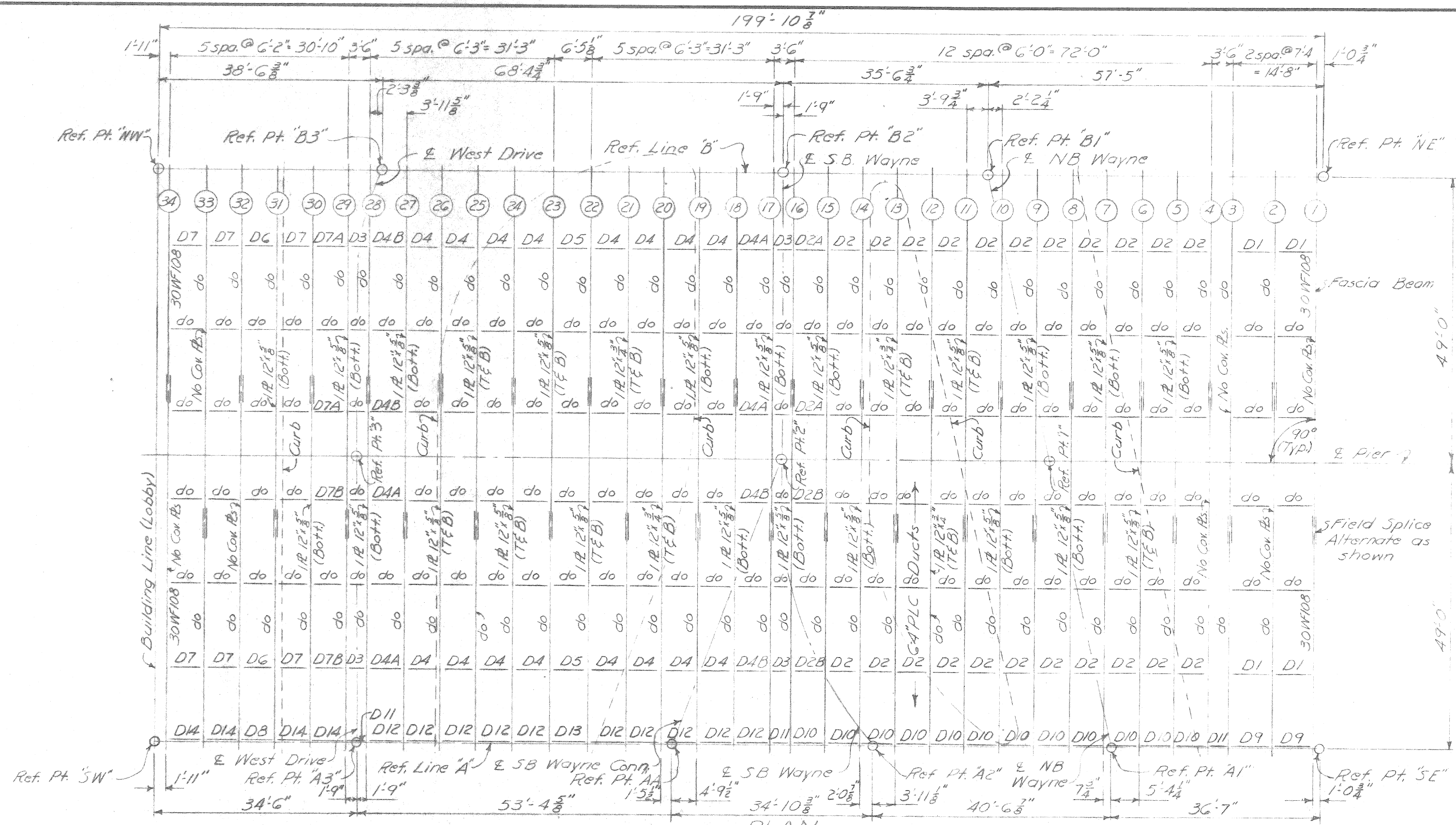
MICHAEL J. O'BRIEN  
WILLIAM E. KREGER  
CHARLES L. WILSON

STATE PROJECT 82-127		COUNTY JOB 892	
ISSUE NO. 2		SHEET NO. P-5	
DATE 8-23-56			

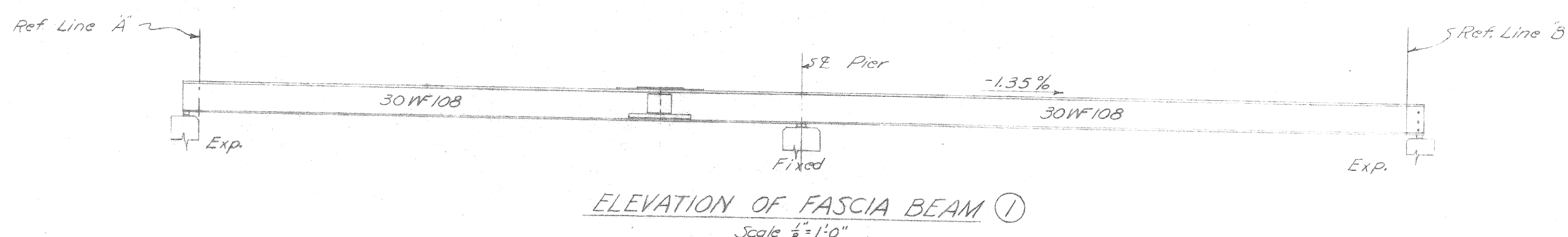
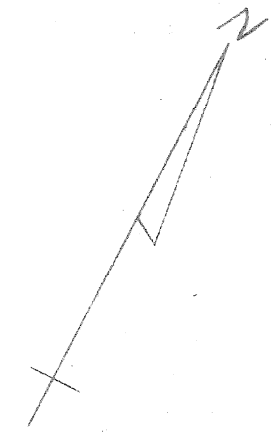




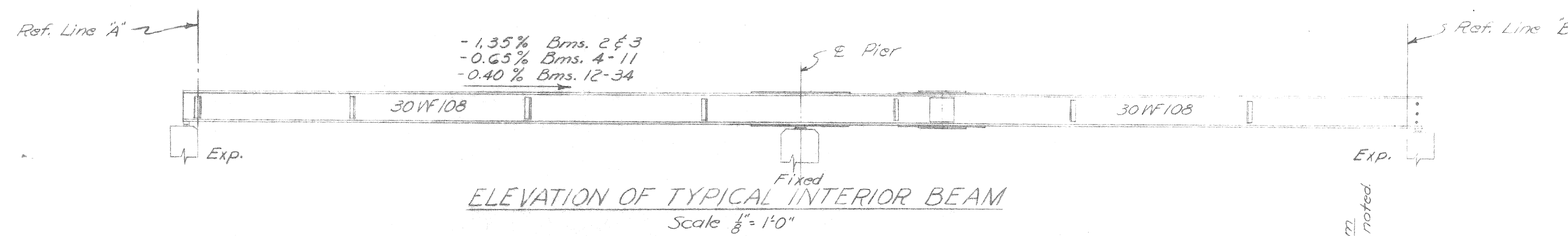




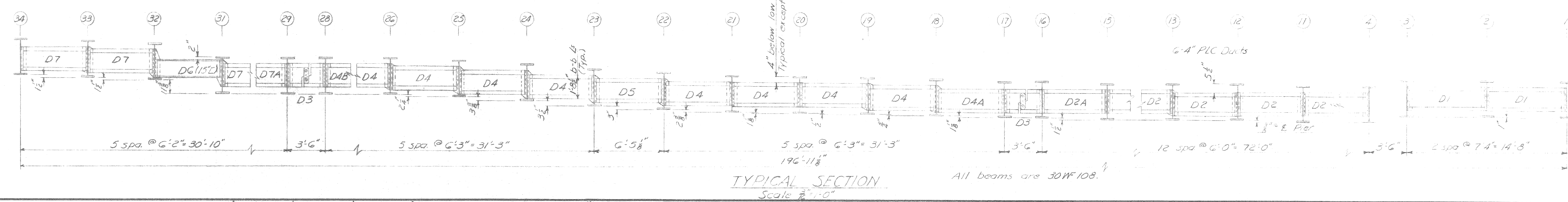
PLAN  
Scale 1/8" = 1'-0"  
Note: Approximate equal spacing of Diaphragms as shown.  
Cover Plates over Pier only.



ELEVATION OF FASCIA BEAM (1)  
Scale 1/8" = 1'-0"



ELEVATION OF TYPICAL INTERIOR BEAM  
Scale 1/8" = 1'-0"



TYPICAL SECTION  
Scale 1/8" = 1'-0"

**GENERAL NOTES**  
Design: Michigan State Highway Department's Specifications for the Design of Highway Bridges, 1936 Edition (H20-516-44 and Special Military Loading).  
Least plus impact, maximum deflection 3/1600 span length.  
Fabrication and Erection: Michigan State Highway Department's Standard Specifications for Road and Bridge Construction - 1950 Edition.

Rivets: 3/4" #  
Open Holes: 1/8" # unless otherwise noted.  
Shop Connections: Cover plates shall be riveted. Diaphragms and Diaphragm connection angles may either be riveted or welded.  
Field Connections: Splices shall be riveted. Holes for splice rivets shall be drilled (or subdrilled and reamed) while beams are assembled in the shop to the proper grade and supported so as to prevent deflection. All splice materials shall be match-marked. Diaphragms shall be welded.  
Welds: 1/4" Continuous Fillets except as otherwise noted.  
Shop Painting: shall be in accordance with Standard Specifications except that the top surface of the beams, Diaphragm DG, and surfaces to be field welded shall be painted with one coat of boiled Linseed Oil only.  
Field Painting: One coat of Mixture #5B.  
Gale Plates: 3" or more in thickness may be built up by welding together plates not less than 1/2" in thickness. Bevel edges 1/4" and weld continuously around the entire perimeter. Grind welds flush with face of plates.  
Welding of Spirals is incidental to Spiral Shear Developers.  
Camber: All beams to be ordered straight. For Fascia Beam (1) use beam with the greatest natural camber, convex side up.  
Pay Weight: Structural Steel shall be measured by the computed weight in pounds of all metal in the finished structure, deducting for cuts and copes.

**ESTIMATED QUANTITIES**  
Structural Steel: Fabrication and Erection ----- 467,000 Lbs.  
Spiral Shear Developers ----- 12,300 Lbs.

477175

REVISIONS	DRAWN BY	CHECKED BY	DATE	APPROVED
	M. E. Elmer	J. H. Chance	2-21-56	J. W. Surr
	CORRECT			ENGINEER OF BRIDGES AND STRUCTURES
				APPROVED
				COUNTY HIGHWAY ENGINEER

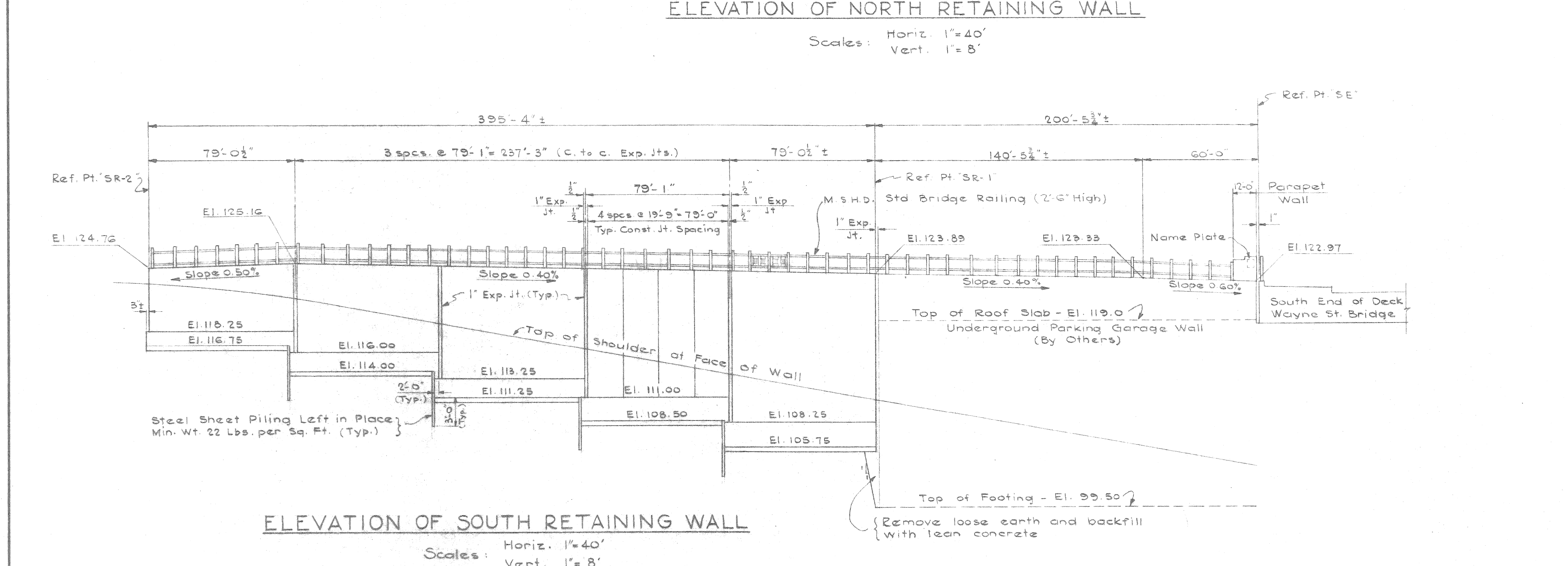
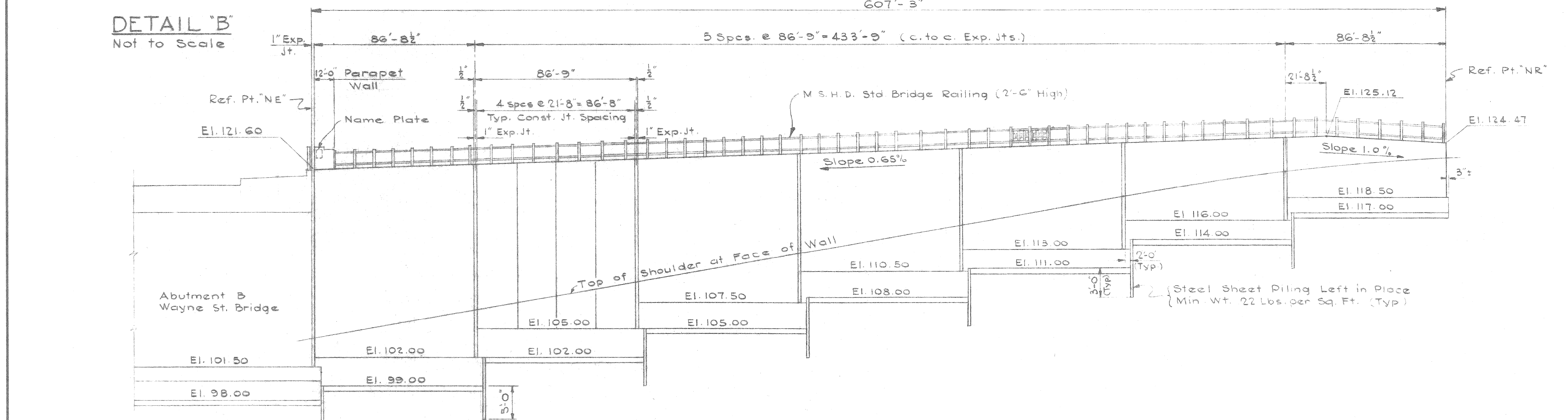
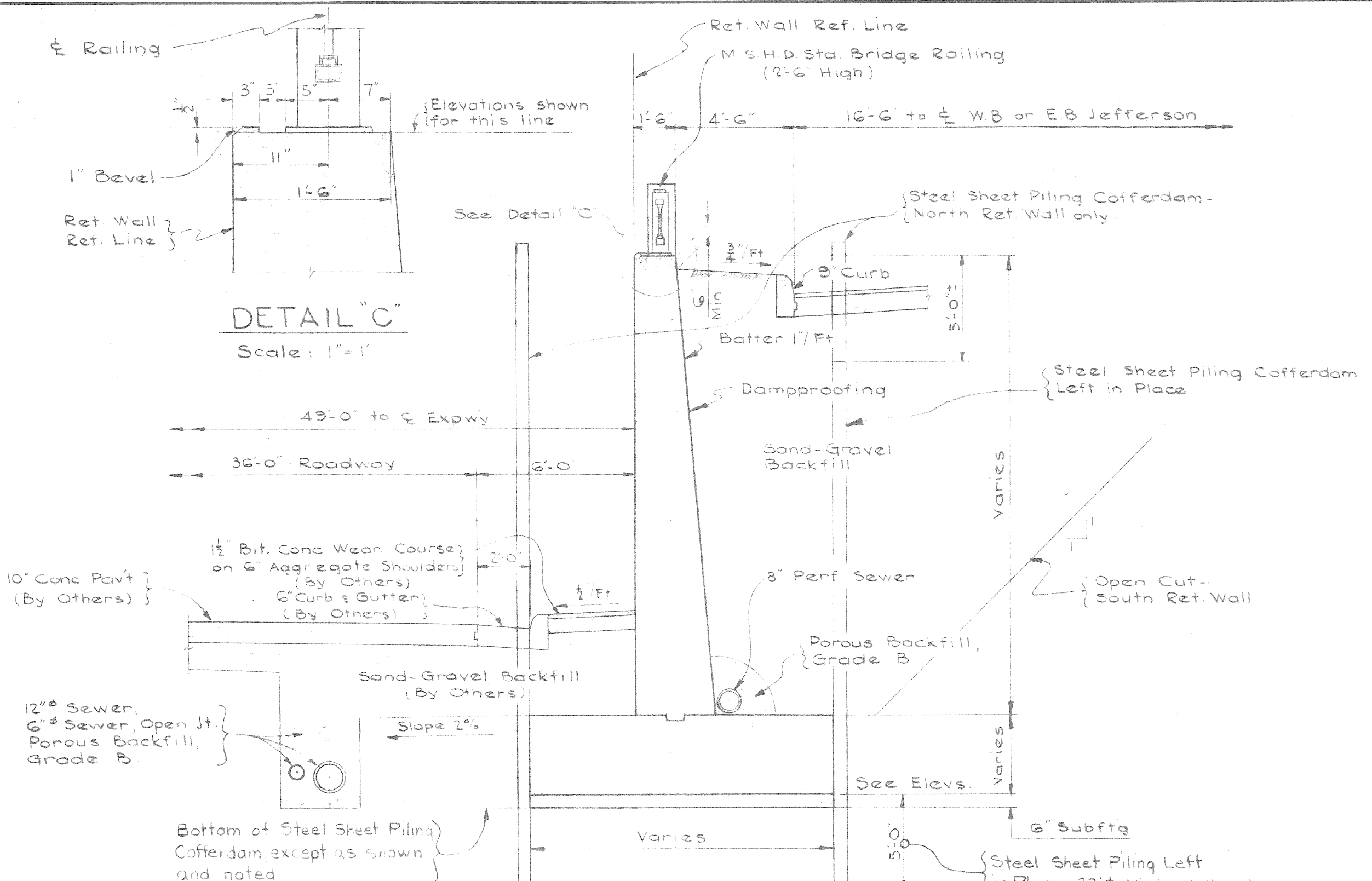
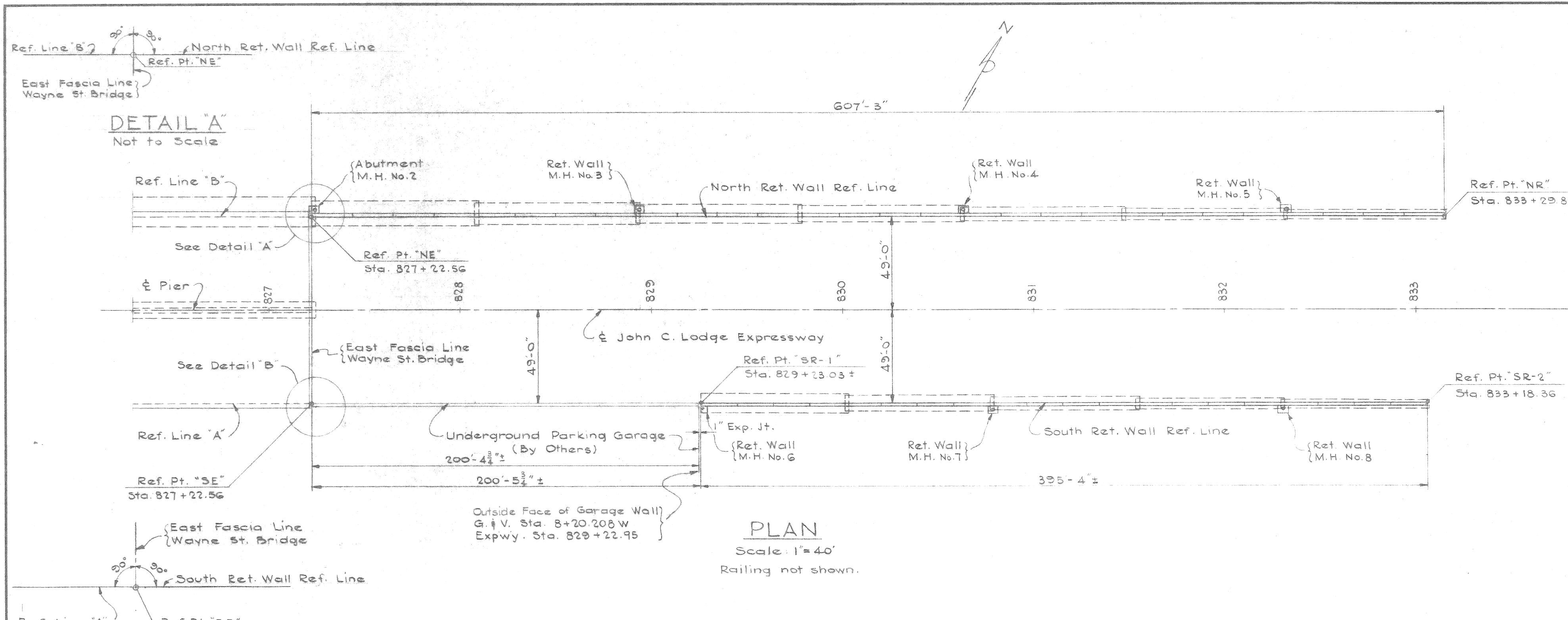
BOARD OF  
**WAYNE COUNTY ROAD COMMISSIONERS**  
DETROIT, MICHIGAN  
MICHAEL J. O'BRIEN  
CHARLES L. WILSON

STATE PROJECT	COUNTY JOB
82-127	892
ISSUE NO. 1	SHEET NO. P-7
DATE 2-23-56	

JOHN C. LODGE EXPRESSWAY  
WAYNE STREET CROSSING  
STRUCTURAL STEEL - GENERAL PLAN

STATE FILE	BRIDGE	B74 of 82-22-12
	ROAD	





TYPICAL SECTION THRU RETAINING WALL Scale: 1"=4'

ELEVATION OF NORTH RETAINING WALL Scale: Horiz. 1"=40' Vert. 1"=8'

ELEVATION OF SOUTH RETAINING WALL Scale: Horiz. 1"=40' Vert. 1"=8'

GENERAL NOTES

Design - Michigan State Highway Department's Specifications for the Design of Highway Bridges, 1936 Edition. Concrete - Grade A.

Section	FOOTING PRESSURES			
	Lbs. per Sq. Ft.			
	Max. Toe from D.L.	Allowable R=1.0	Max. Toe from D.L.+LL	Allowable Average R=1.5
23' Wall	3270	3300	3330	4330
21' Wall	3000	3250	3550	4510
15' Wall	1740	3540	3300	5550
8' Wall	1500	11640	2000	17130

Note - 23', 21', 15' & 8' is distance from Top of Wall to Bottom of Footing.

STATE PROJECT	82-127	COUNTY JOB	892
ISSUE NO.	1	SHEET NO.	P-8
DATE	8/23/36		

REVISIONS	DRAWN BY D. Chmielewski	CHECKED BY P. Epstein	DATE 3-2-36	APPROVED <i>J.W. Bond</i> ENGINEER OF BRIDGES AND STRUCTURES	<b>WAYNE COUNTY ROAD COMMISSIONERS</b> BOARD OF DETROIT, MICHIGAN MICHAEL J. O'BRIEN WILLIAM E. GREGER CHARLES L. WILSON	<b>JOHN C. LODGE EXPRESSWAY</b> WAYNE STREET CROSSING GENERAL PLAN OF RETAINING WALLS	STATE PROJECT	82-127	COUNTY JOB	892
	CORRECT <i>J.C. Bond</i> ENGINEER OF DESIGN, STRUCTURES AND EXPRESSWAYS			COUNTY HIGHWAY ENGINEER			ISSUE NO.	1	SHEET NO.	P-8