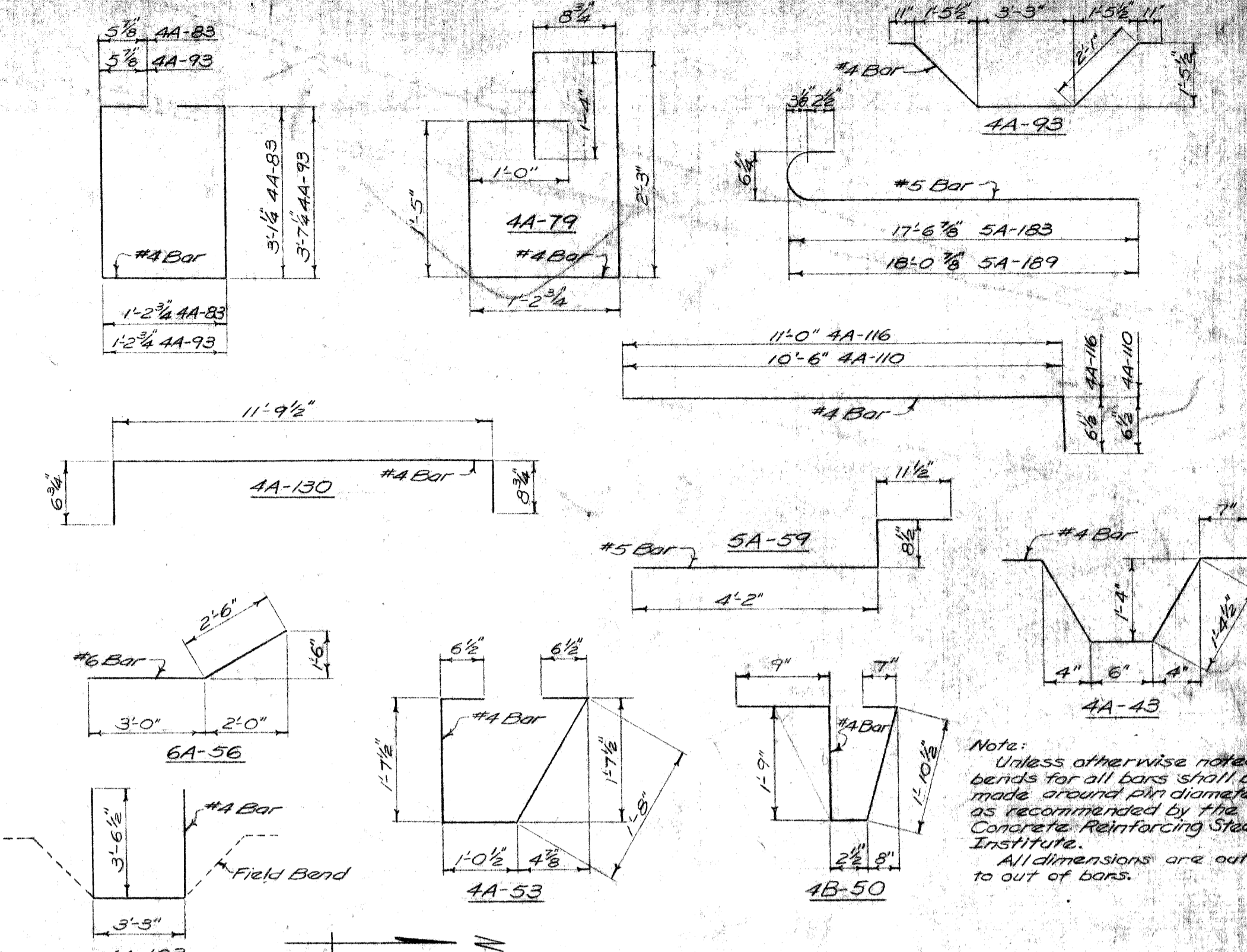
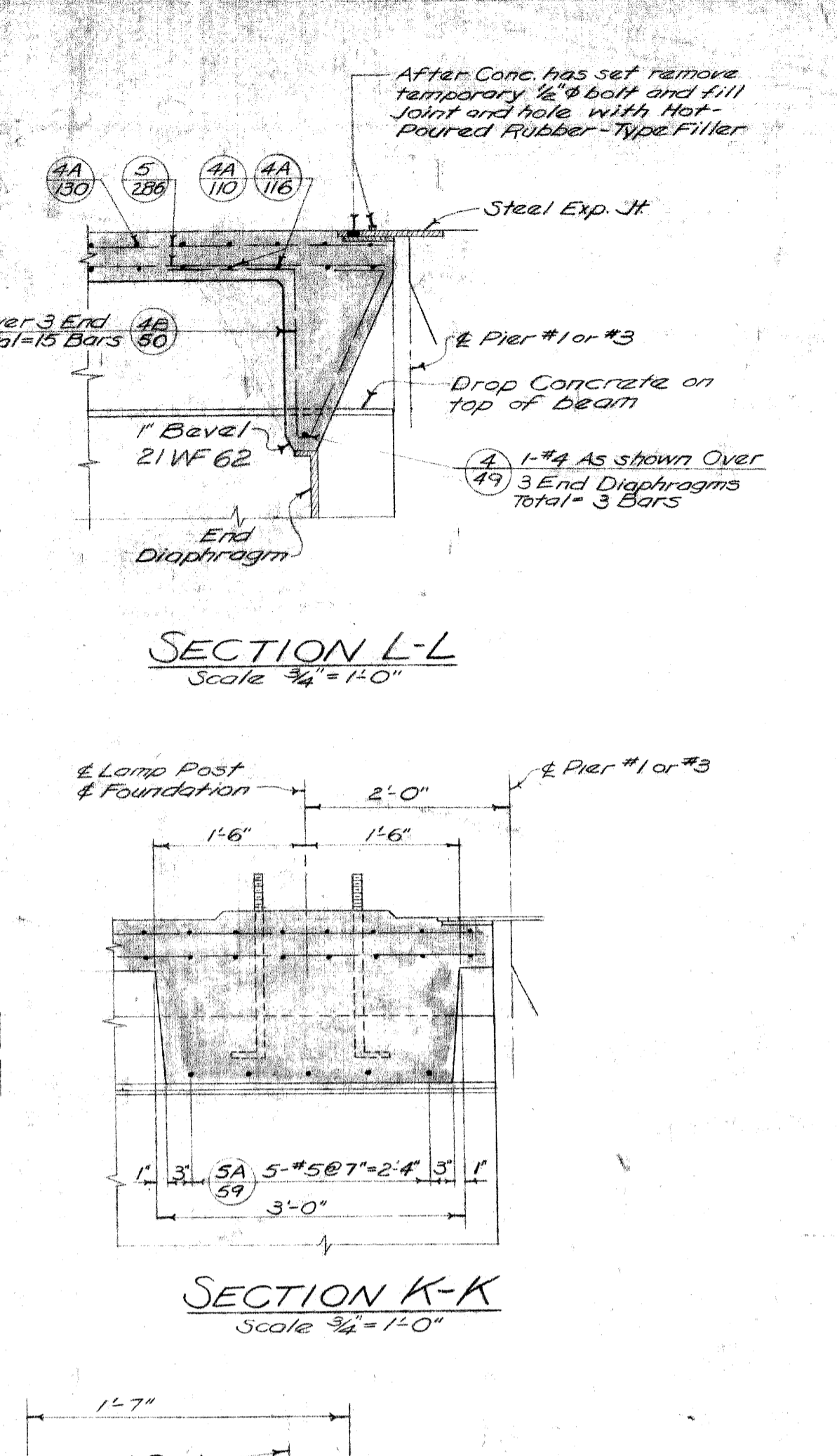
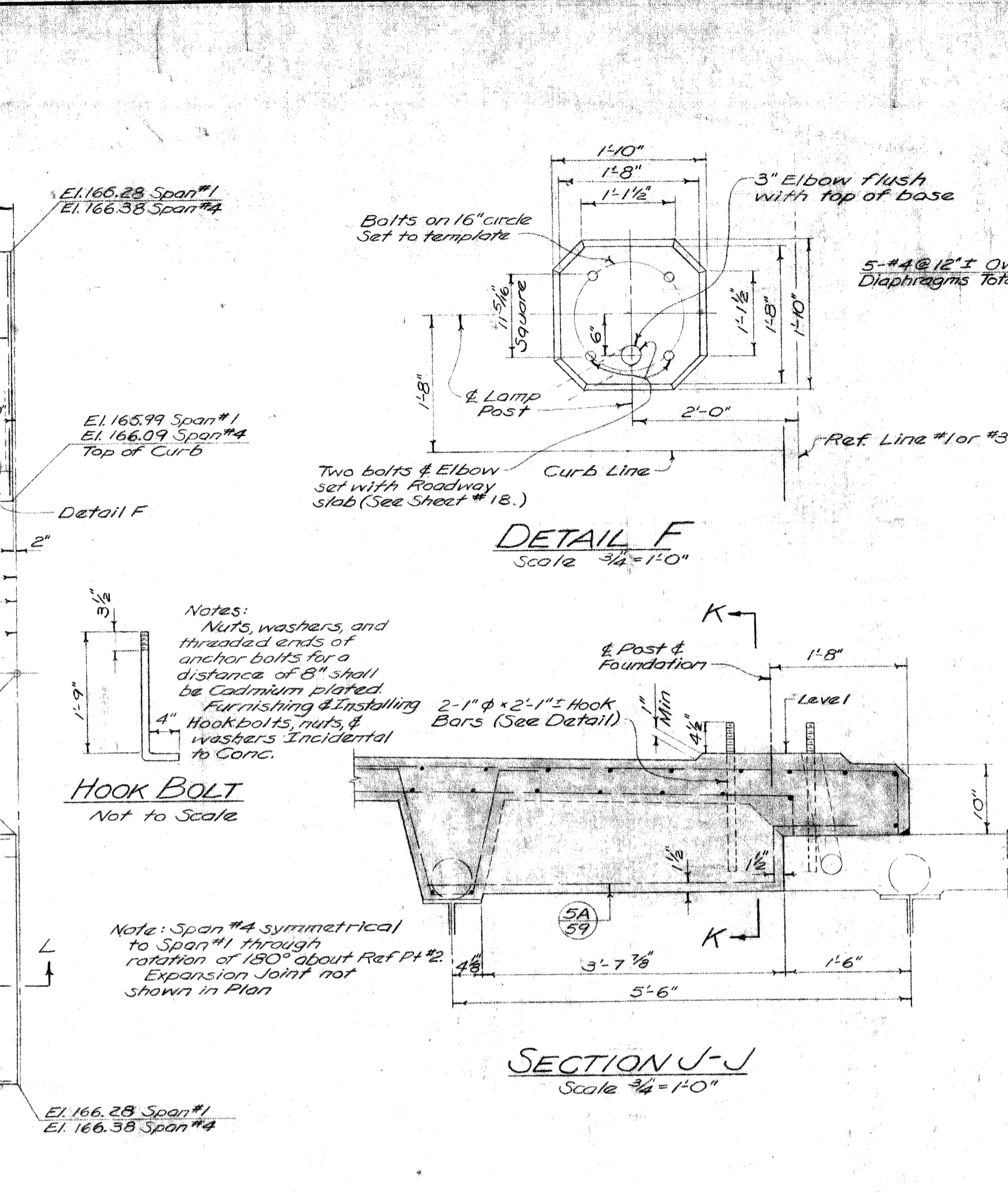
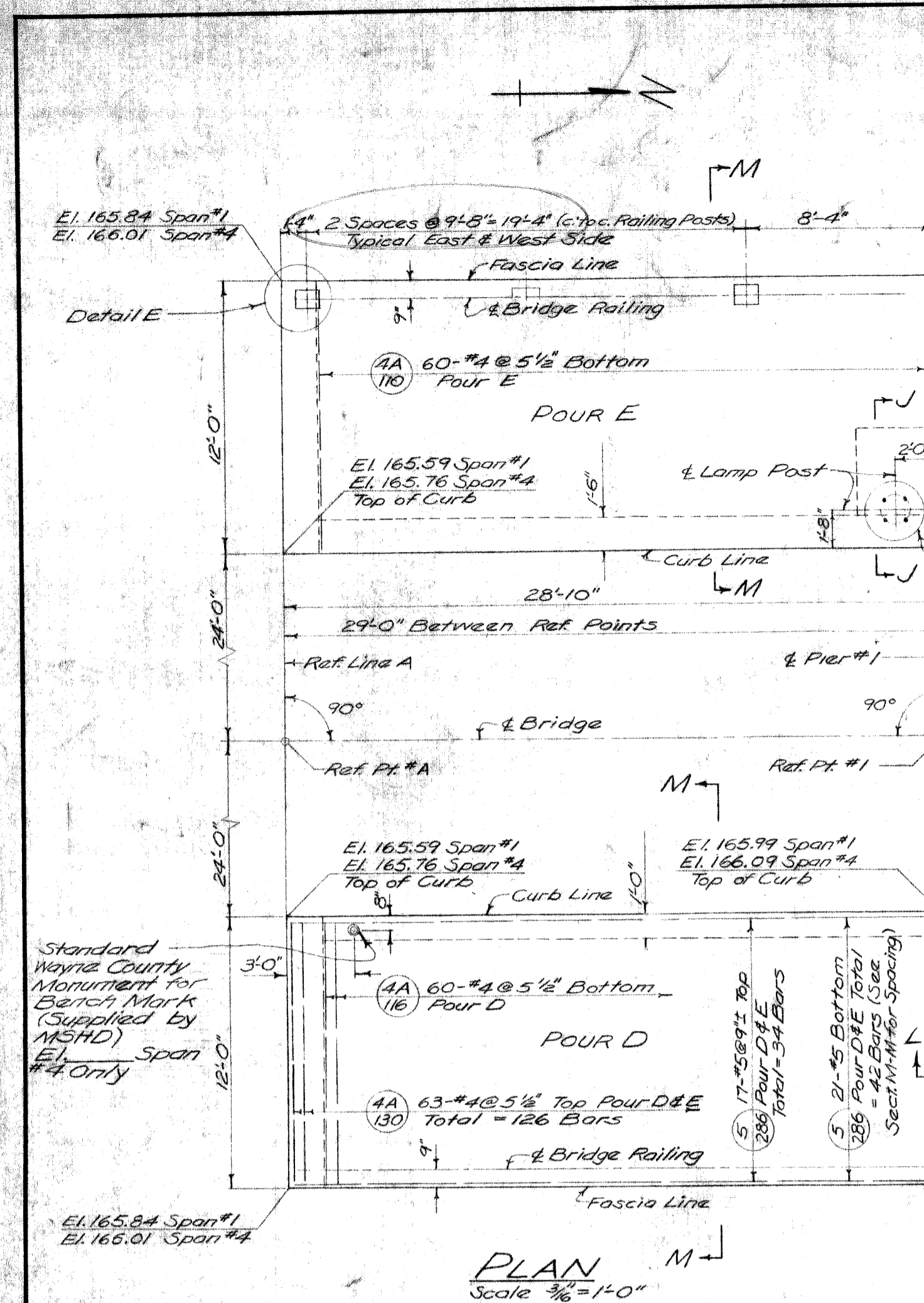
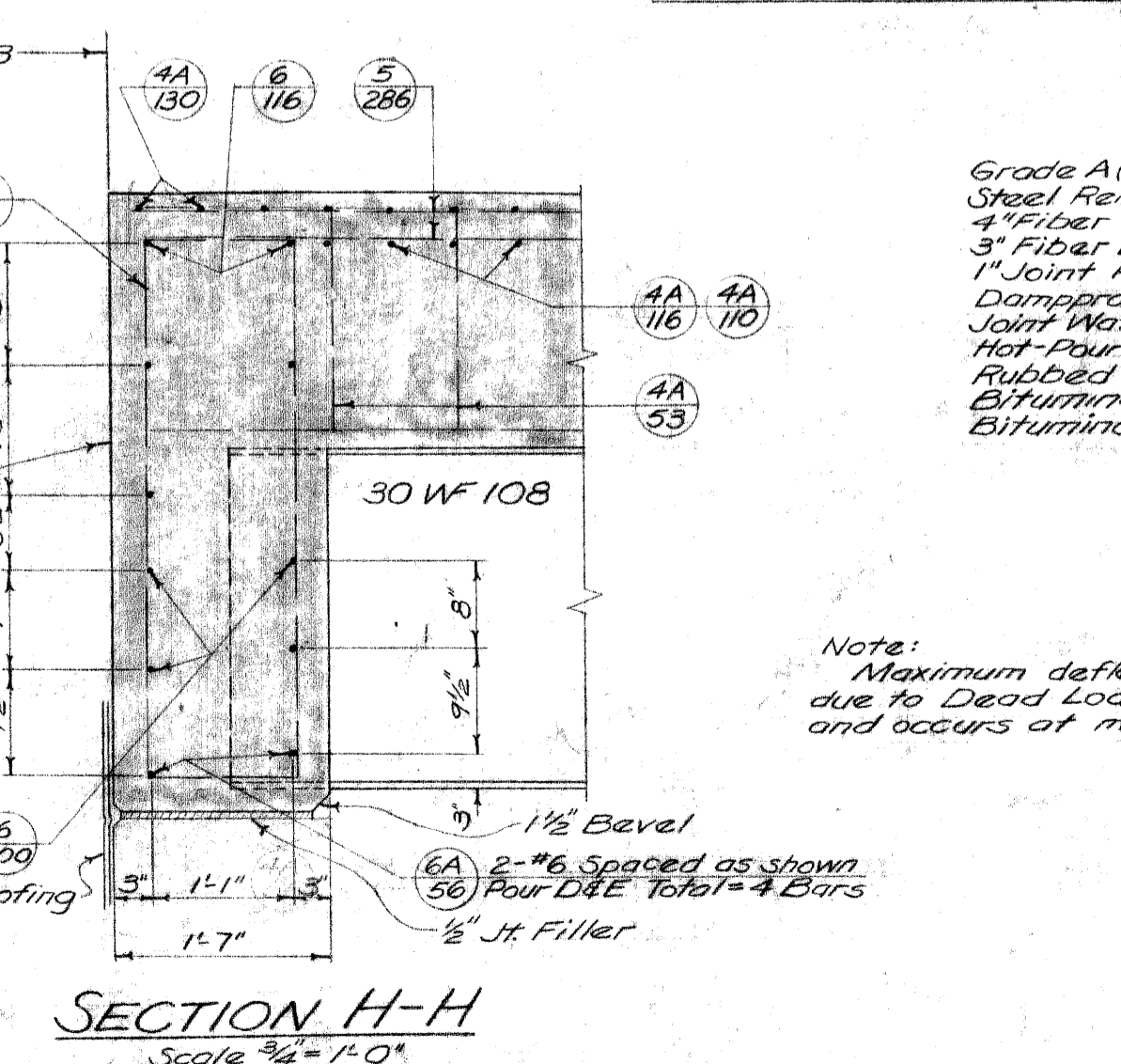
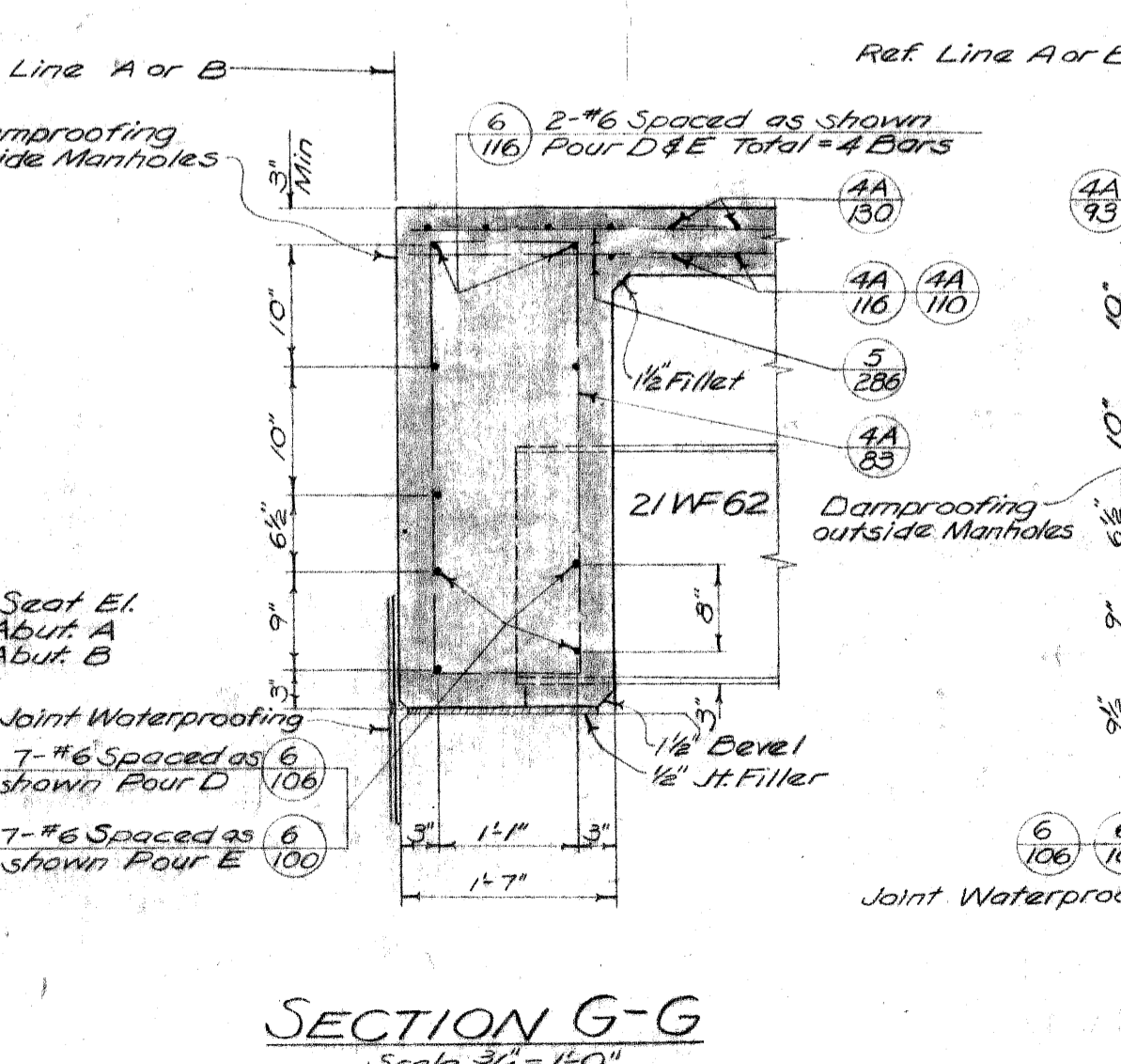
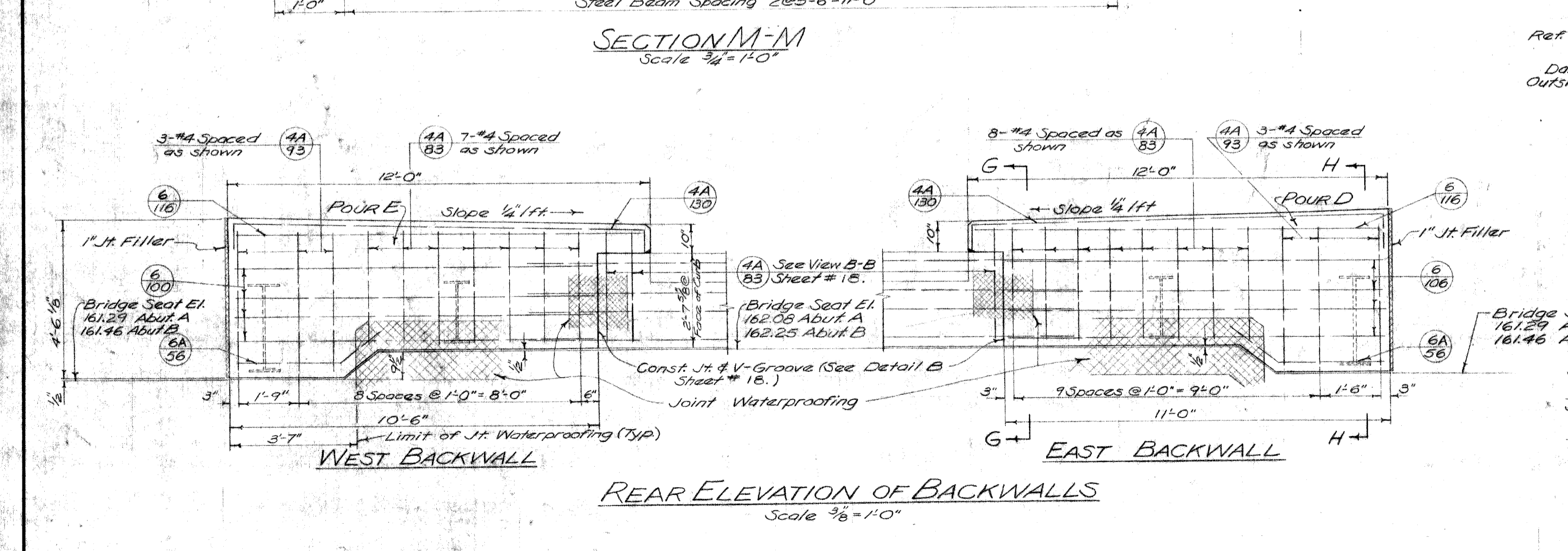
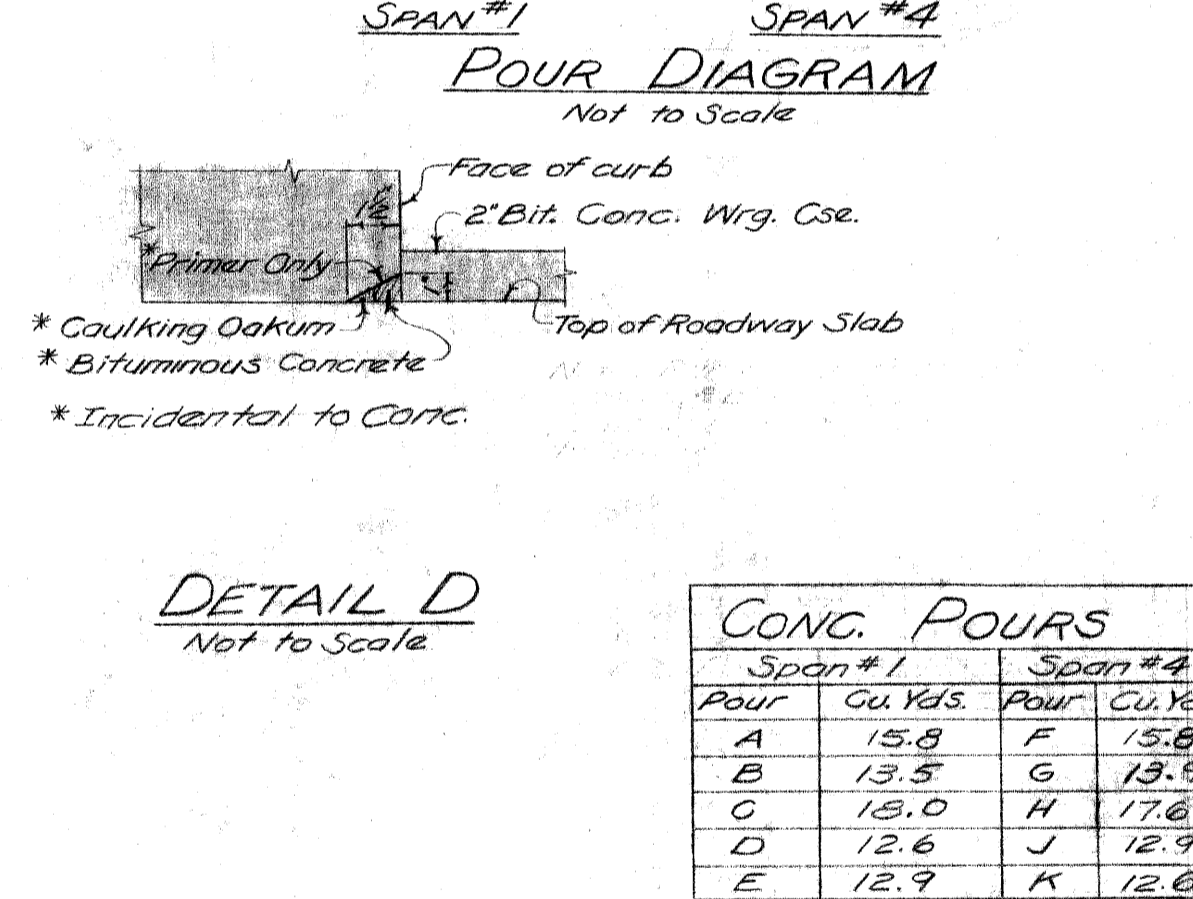
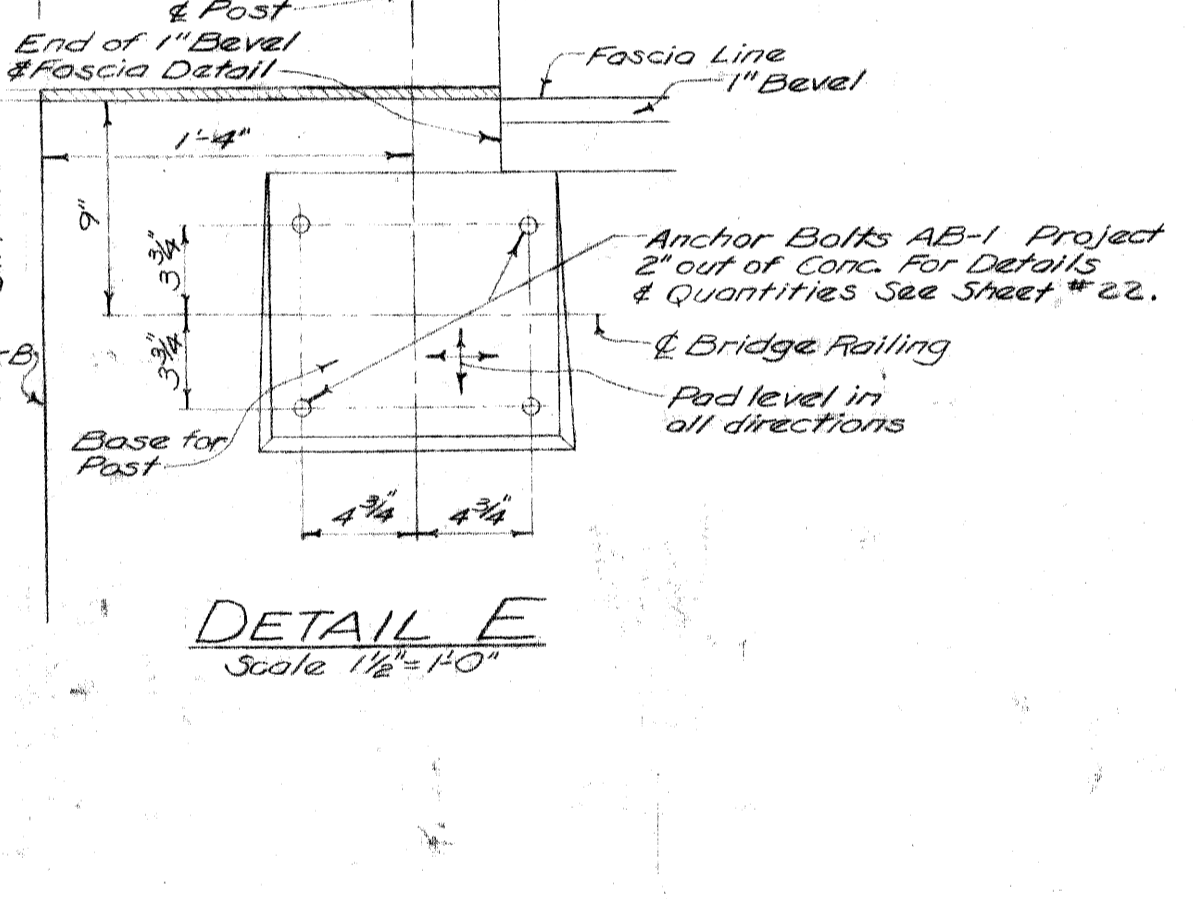
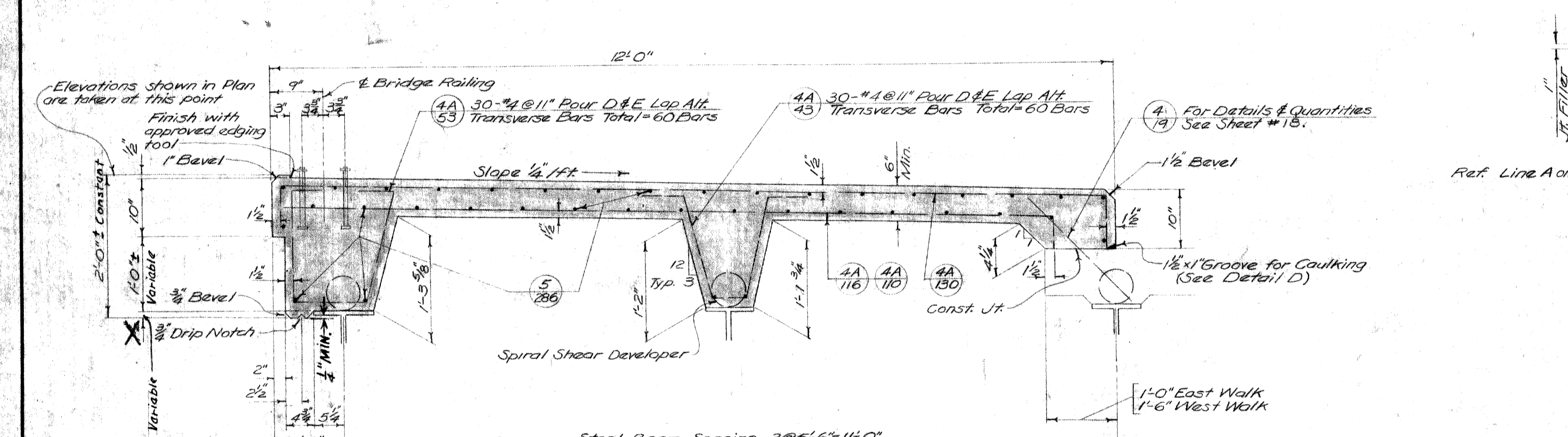


REVISIONS 1. CORRECT 2. CORRECT 3. CORRECT			DRAWN BY R. BEKLEY CHECKED BY J. M. [Signature] DATE 3-4-53	APPROVED [Signature] ENGINEER OF BRIDGES AND STRUCTURES APPROVED [Signature] COUNTY HIGHWAY ENGINEER	BOARD OF WAYNE COUNTY ROAD COMMISSIONERS DETROIT, MICHIGAN MICHAEL J. O'BRIEN JOHN P. O'HARA CHARLES L. WILSON	JOHN C. LODGE EXPRESSWAY LINWOOD AVENUE CROSSING DECK DETAILS SPANS NO. 1 AND 4	STATE PROJECT 82-128 COUNTY JOB 849 SHEET NO. 18
--	--	--	--	---	--	--	--



Mark No.	Span #	Length	Size	Remarks
6-210	7	21'-0"	#6	Straight
6-206	7	20'-6"	#6	"
6-179	7	17'-9"	#6	"
5-180	60	18'-0"	#5	Straight
5-176	180	17'-6"	#5	Straight
5A-187	60	18'-9"	#5	Bent
5A-183	60	18'-3"	#5	"
4-280	44	28'-0"	#4	Straight
4-119	60	11'-9"	#4	"
4A-103	14	10'-3"	#4	Bent
4A-93	16	9'-3"	#4	"
4A-53	3	3'-3"	#4	"
4A-77	48	7'-9"	#4	"
6-116	4	11'-6"	#6	Straight
6-108	7	10'-5"	#6	"
6-100	7	10'-0"	#6	"
6A-56	4	4'-6"	#6	Bent
5-286	76	28'-6"	#5	Straight
5A-59	5	5'-9"	#5	Bent
4-49	3	4'-9"	#4	Straight
4A-130	126	13'-0"	#4	Bent
4A-116	60	11'-6"	#4	"
4A-110	60	11'-0"	#4	"
4A-93	6	9'-3"	#4	"
4A-83	15	8'-3"	#4	"
4A-53	60	5'-3"	#4	"
4B-50	15	5'-0"	#4	"
4A-43	60	4'-3"	#4	"



Grade A (6B) Concrete - Superstructure	145.6 Cu Yds
Steel Reinforcement	3960.5 Lbs
4" Fiber Ducts	696 Lin Ft
3" Fiber Ducts	58 Lin Ft
1" Joint Filler	27.5 Sq Ft
Dampening	30.0 Sq Ft
Joint Waterproofing	25.5 Sq Ft
Hot-Poured Rubber-Type Filler	26.0 Lin Ft
Rubbed Surface Finish	320 Sq Ft
Bituminous Concrete Wearing Course	53 Tons
Bituminous Bond Coat, AE-2	45 Gals.

Field Revision: Revised facial dimensions

REVISIONS	DRAWN BY	CHECKED BY	DATE	APPROVED
	R. Cummins	R. Beckley	3-7-54	John C. Lodge

APPROVED: *John C. Lodge* ENGINEER OF BRIDGES AND STRUCTURES

APPROVED: *John K. Winters* COUNTY HIGHWAY ENGINEER

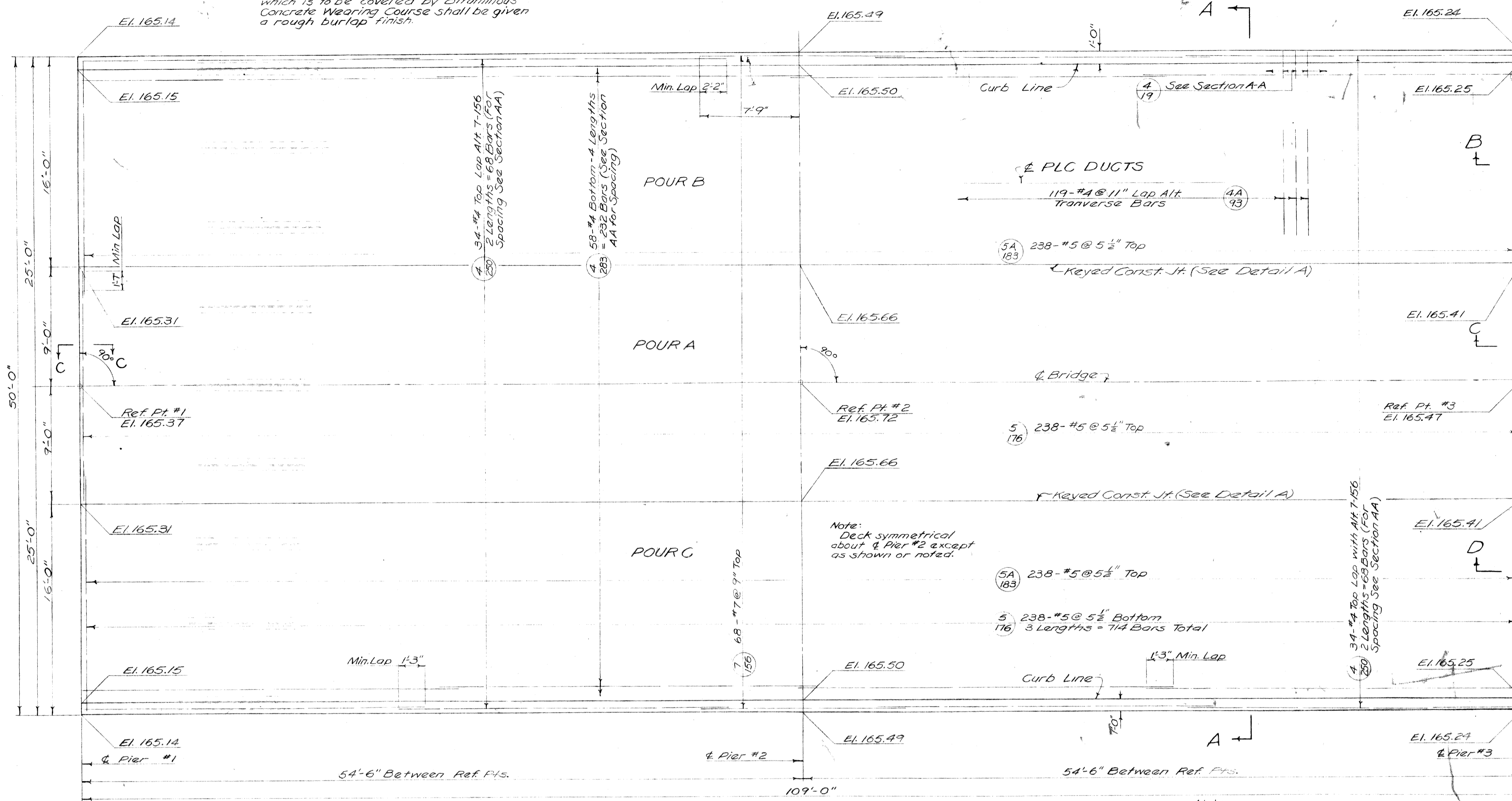
BOARD OF WAYNE COUNTY ROAD COMMISSIONERS

JOHN C. LODGE EXPRESSWAY
LINWOOD AVENUE CROSSING
DECK DETAILS SPANS NO. 1 AND 4 (CONT'D)

STATE PROJECT	COUNTY JOB
82-128	849

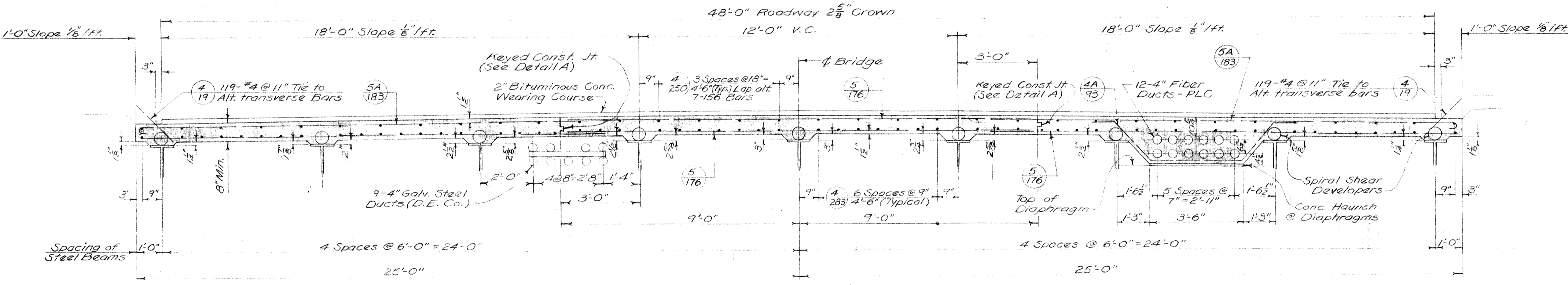
ISSUE NO. 1
DATE 10-1-54
SHEET NO. 19

Note: That portion of the Bridge Deck which is to be covered by Bituminous Concrete Wearing Course shall be given a rough Burlap finish.

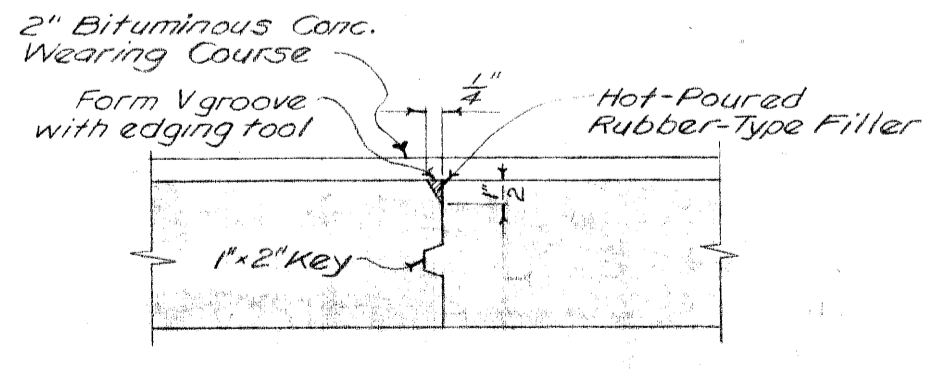


PLAN
Scale 3/16" = 1'-0"

Note: Elevations shown in Plan are for Top of Concrete. Steel Expansion Joint not shown in Plan.

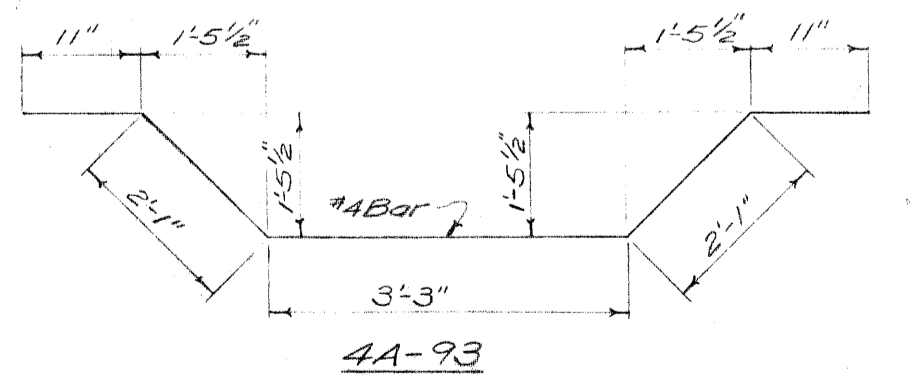


SECTION A-A
Scale 3/8" = 1'-0"



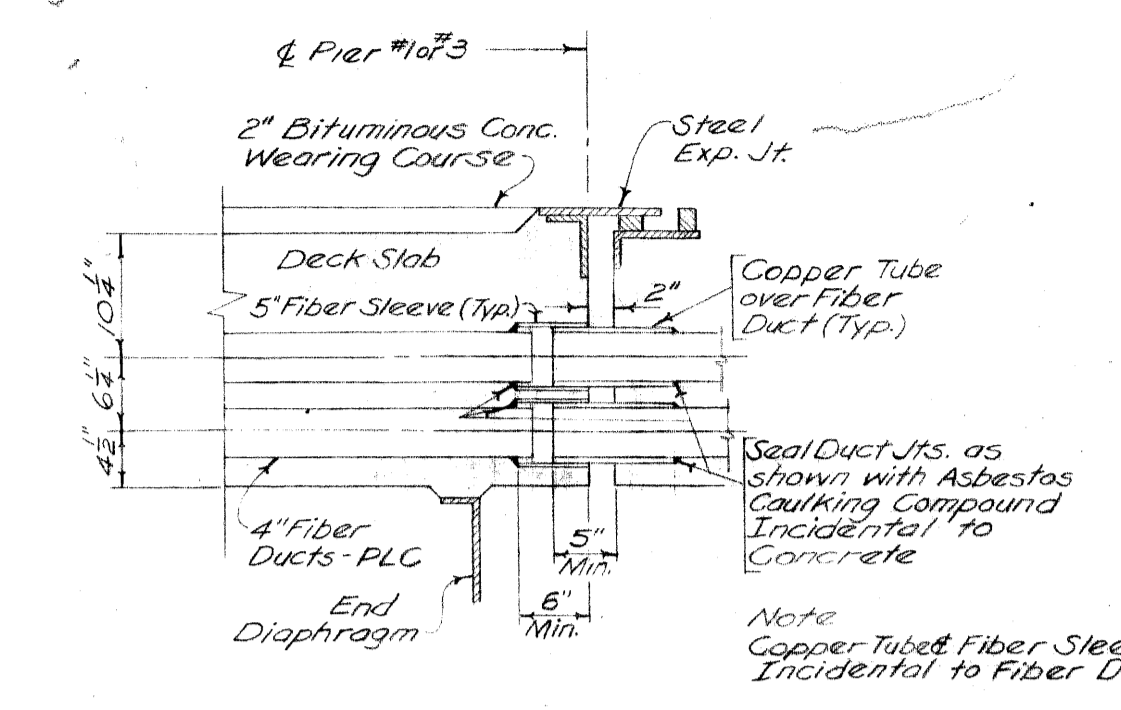
DETAIL A
Not to Scale

Note: Cover Hot-Poured Rubber-Type Filler with sand or limestone chips just prior to placing Bituminous Conc. Wearing Course.

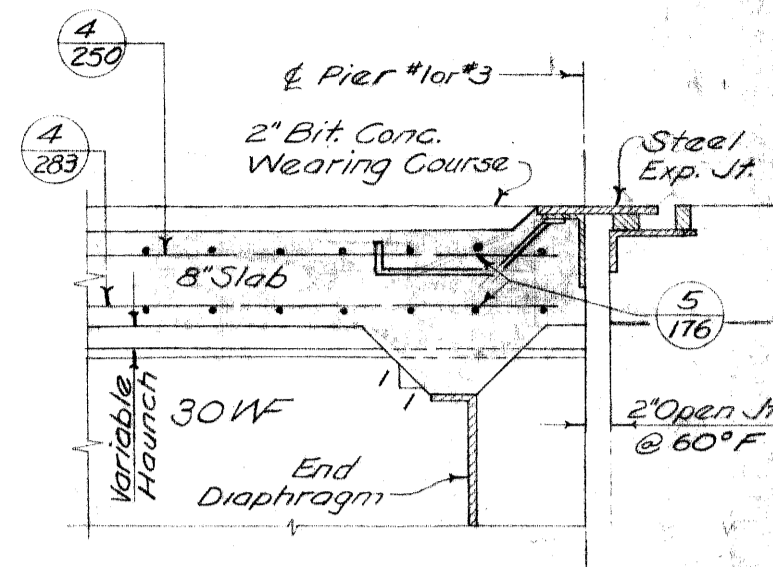


DETAILS OF BENT BARS
Not to Scale

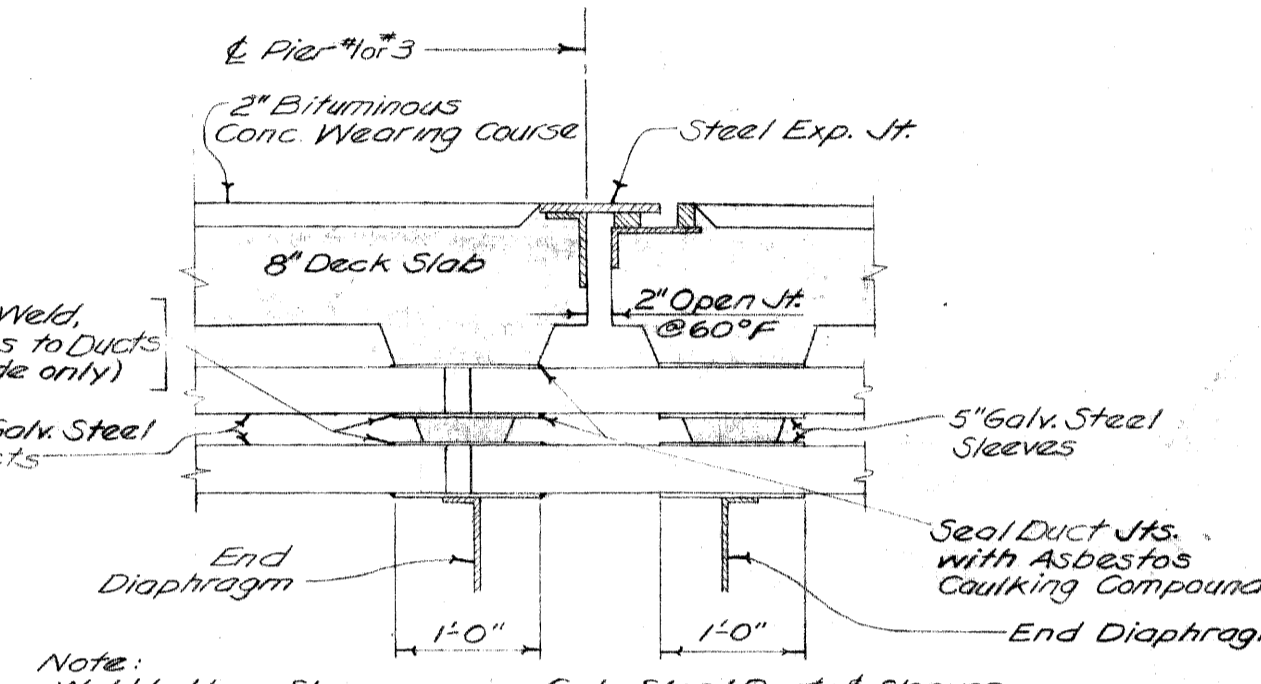
Note: Unless otherwise noted bends for all bars shall be made around pin diameters as recommended by the Concrete Reinforcing Steel Institute.



SECTION B-B
Scale 3/8" = 1'-0"



SECTION C-C
Scale 3/8" = 1'-0"



SECTION D-D
Scale 3/8" = 1'-0"

GRADE A(6B) CONCRETE	
POUR	Cu. Yd.
A	52.0
B	59.7
C	45.5

Pours shall be started at Piers 1 & 3 simultaneously and shall progress toward Pier 2.

BILL OF REINFORCING BARS				
Mark	No.	Size	Length	Remarks
7-156	68	#7	15'-6"	Straight
5-176	952	#5	17'-6"	Straight
5A-183	476	#5	18'-3"	Bent
4-293	232	#4	28'-3"	Straight
4-250	136	#4	25'-0"	"
4-19	238	#4	1'-9"	"
4A-93	119	#4	9'-3"	Bent

QUANTITIES

Grade A(6B) Concrete-Superstr. 157.2 Cu.Yd.
2" Fiber Ducts 1302 Lin.Ft.
Steel Reinforcement 36,254 Lbs.
Hot-Poured Rubber-Type Filler 210 Lin.Ft.
Bituminous Concrete Wearing Course 64 Tons
Bituminous Bond Coat, AE-2 57 gals.

Work this Sheet with Sheet #21.

STATE FILE	BRIDGE	B52 of 82-22-12
	ROAD	
STATE PROJECT	82-128	COUNTY JOB 849
ISSUE NO.	1	SHEET NO. 20
DATE	8/27/54	

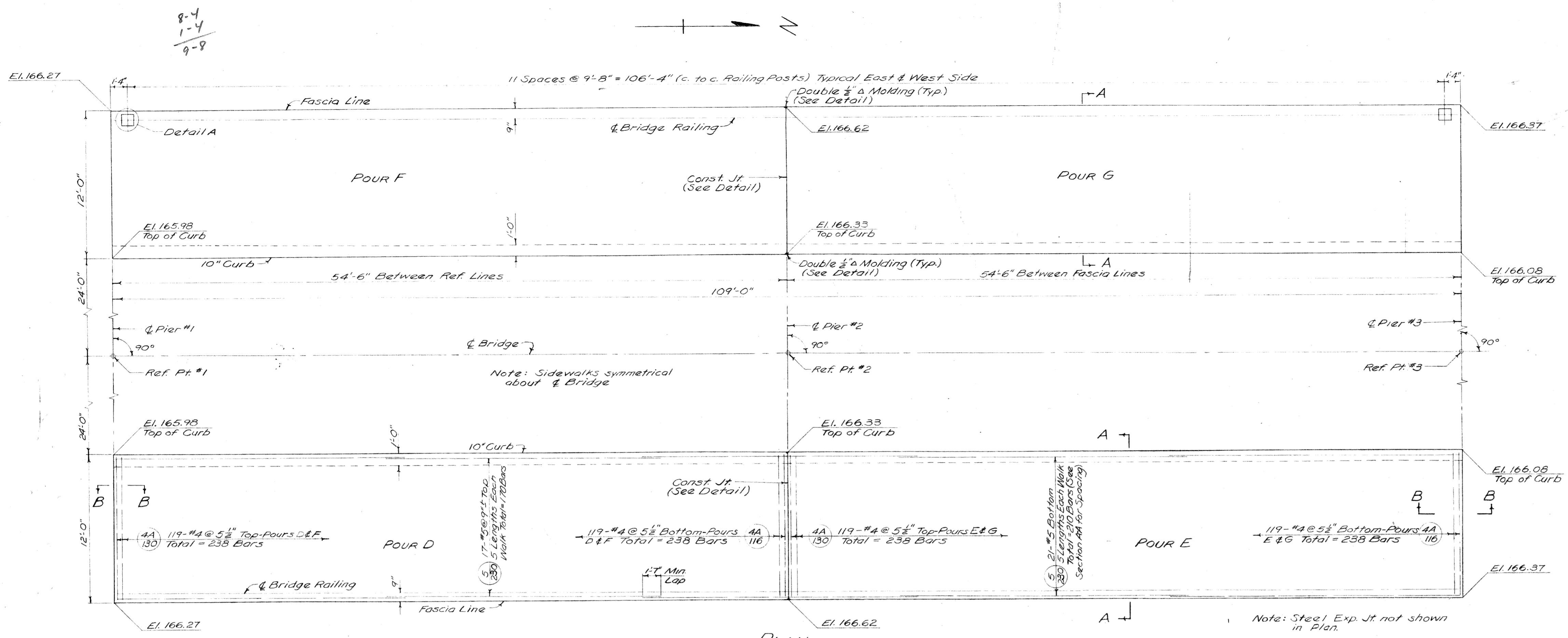
REVISIONS	DRAWN BY	CHECKED BY	DATE	APPROVED
	R. Cummins	R. Beckley	12-9-53	[Signature]
				[Signature]

BOARD OF
WAYNE COUNTY ROAD COMMISSIONERS
DETROIT, MICHIGAN

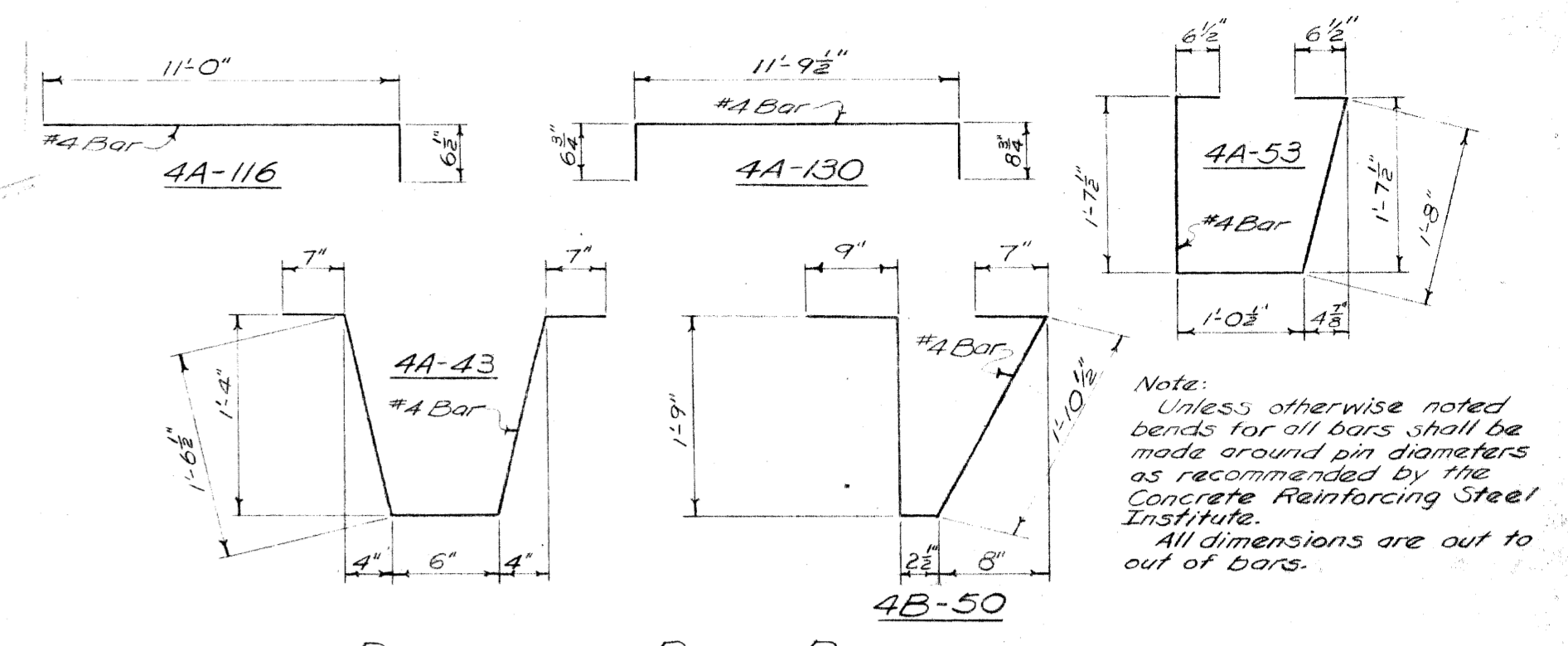
MICHAEL J. O'BRIEN JOHN P. O'HARA CHARLES L. WILSON

JOHN C. LODGE EXPRESSWAY
LINWOOD AVENUE CROSSING
DECK DETAILS SPAN NO. 2 AND 3

8-4
1-4
9-8



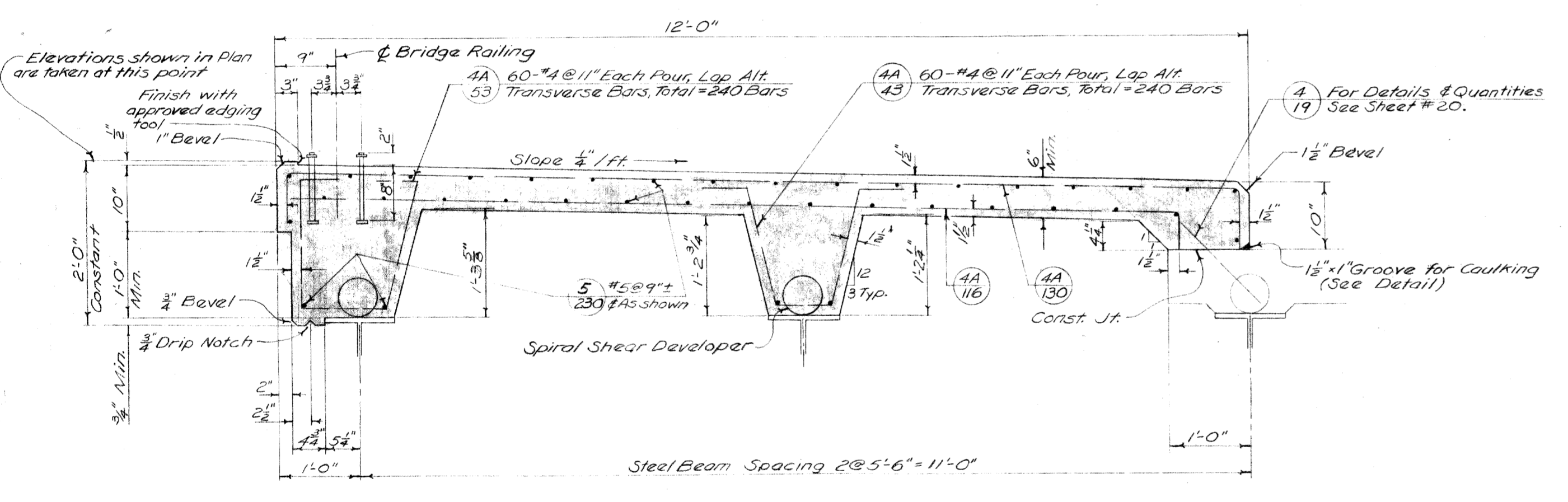
PLAN
Scale 1/8" = 1'-0"



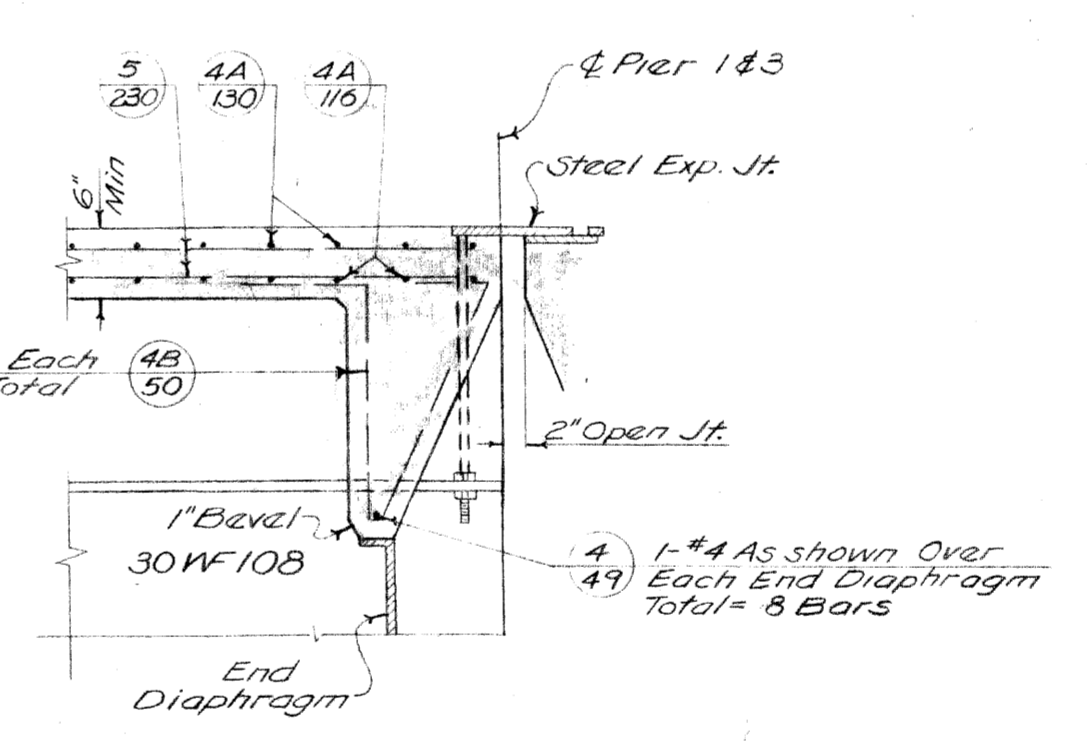
DETAILS OF BENT BARS
Not to Scale

BILL OF REINFORCING BARS				
Mark	No.	Size	Length	Remarks
5-230	380	#5	23'-0"	Straight
4-49	8	#4	4'-9"	Straight
4A-130	476	#4	13'-0"	Bent
4A-116	476	#4	11'-6"	"
4A-53	240	#4	5'-3"	"
4B-50	40	#4	5'-0"	"
4A-43	240	#4	4'-3"	"

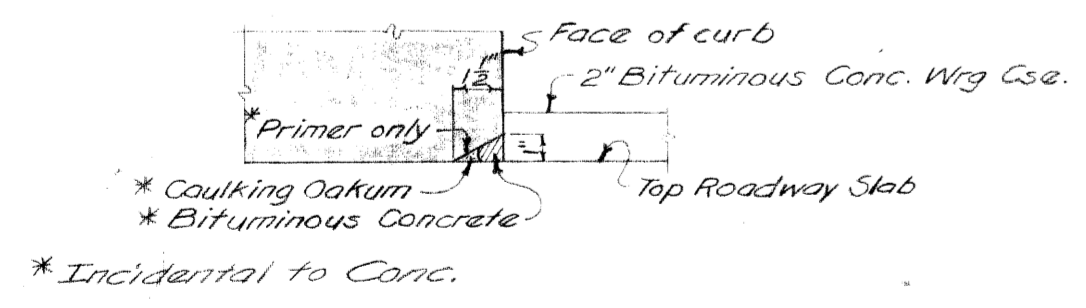
CONCRETE POURS	
POUR	Cu. Yd.
D	20.3
E	20.3
F	20.3
G	20.3



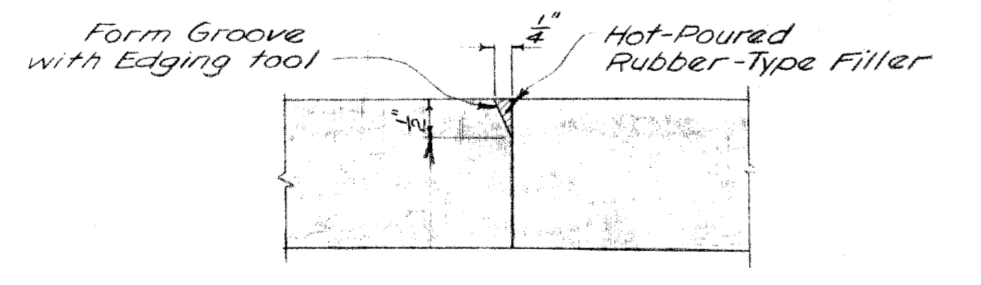
SECTION A-A
Scale 3/8" = 1'-0"



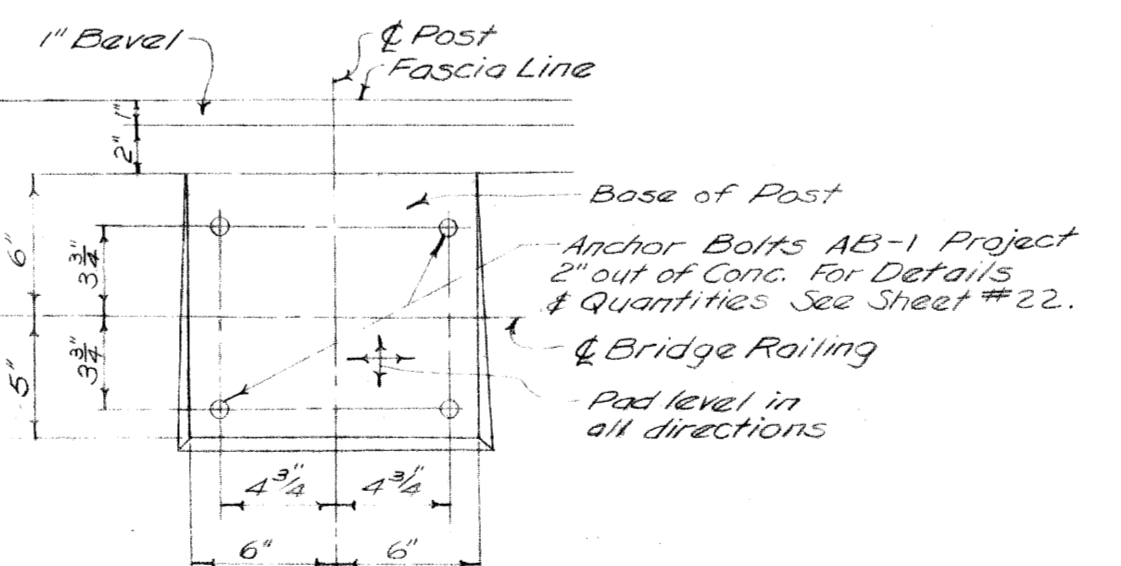
SECTION B-B
Scale 3/8" = 1'-0"



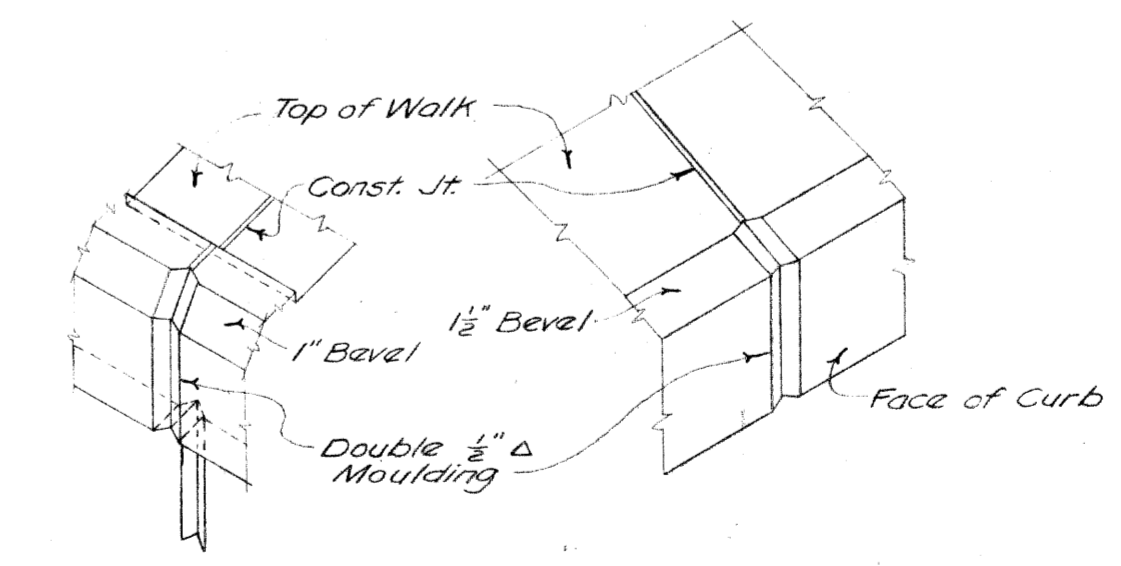
DETAIL OF CONST. JOINT UNDER SIDEWALK
Not to Scale



DETAIL OF TRANSVERSE CONST. JT. IN WALK
Not to Scale



DETAIL A
Scale 1 1/2" = 1'-0"



ISOMETRIC VIEWS OF MOULDING DETAILS
Not to Scale

Note: Maximum deflection due to Dead Load is 1/4" and occurs 35' each side of Pier #2

QUANTITIES

Grade A (6B) Concrete	81.2 Cu. Yd.
Steel Reinforcement	18,658 Lbs.
Hot-Poured Rubber-Type Filler	28 Lin. Ft.
Rubbed Surface Finish	616 Sq. Ft.

Work this Sheet with Sheet #20.

REVISIONS	DRAWN BY	CHECKED BY	DATE	APPROVED
	R. Cummins	R. Beckley	12-26-53	<i>[Signature]</i> ENGINEER OF BRIDGES AND STRUCTURES
				<i>[Signature]</i> APPROVED COUNTY HIGHWAY ENGINEER

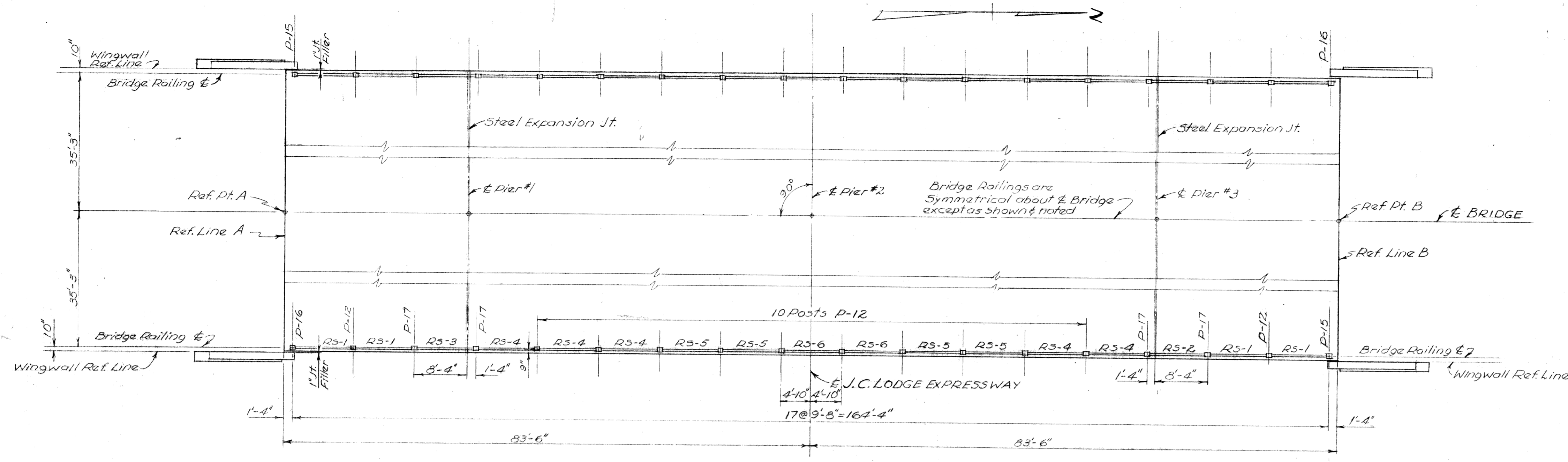
BOARD OF
WAYNE COUNTY ROAD COMMISSIONERS
DETROIT, MICHIGAN

MICHAEL J. O'BRIEN
JOHN P. O'HARA
CHARLES L. WILSON

STATE PROJECT		COUNTY JOB	
82-128		849	
ISSUE NO. 1		SHEET NO. 21	
DATE 10-1-54			

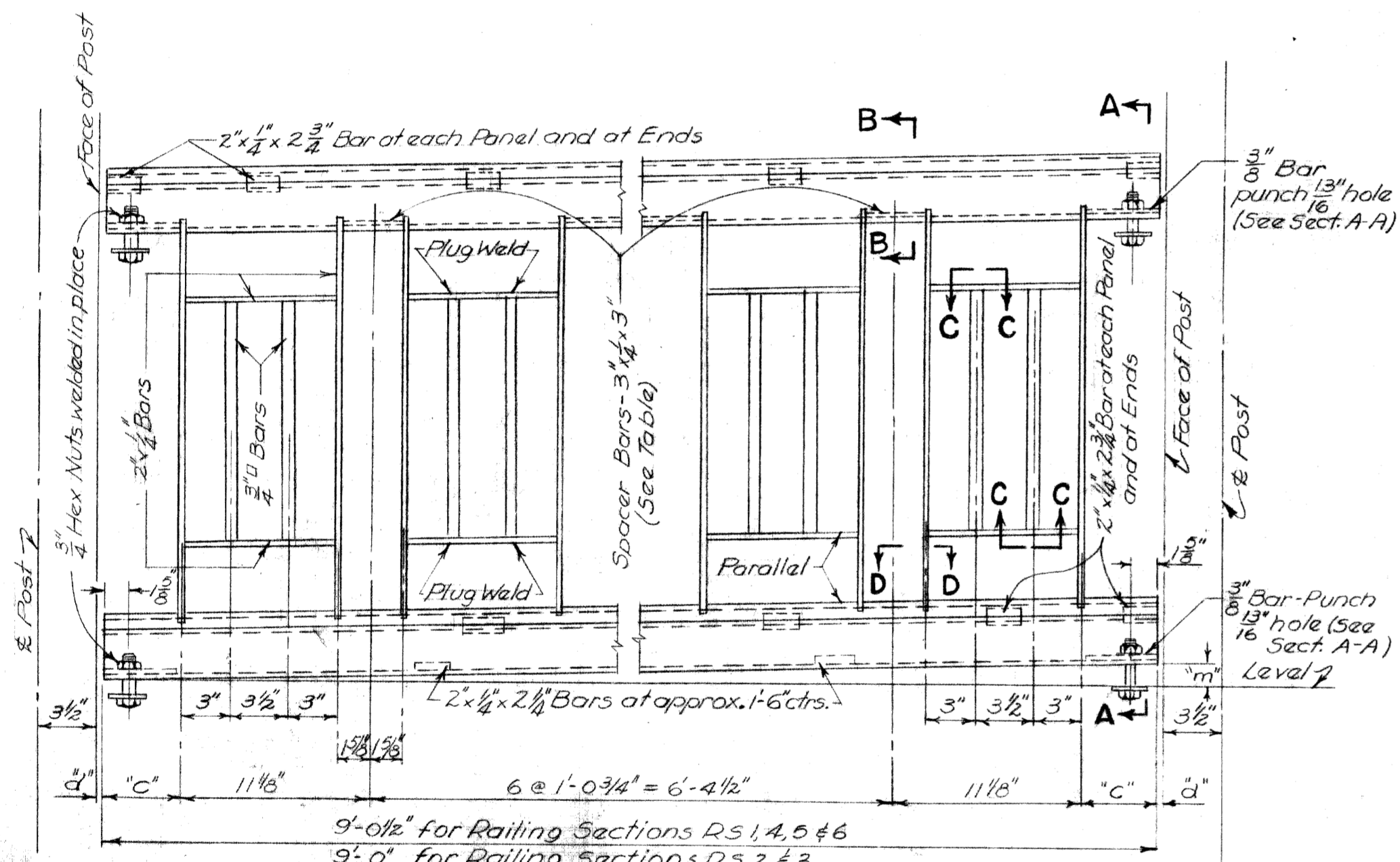
JOHN C. LODGE EXPRESSWAY
LINWOOD AVENUE CROSSING
DECK DETAILS SPAN NO. 2 AND 3 (CONT'D)

REVISIONS CENTER
 2-4-52 Box 31



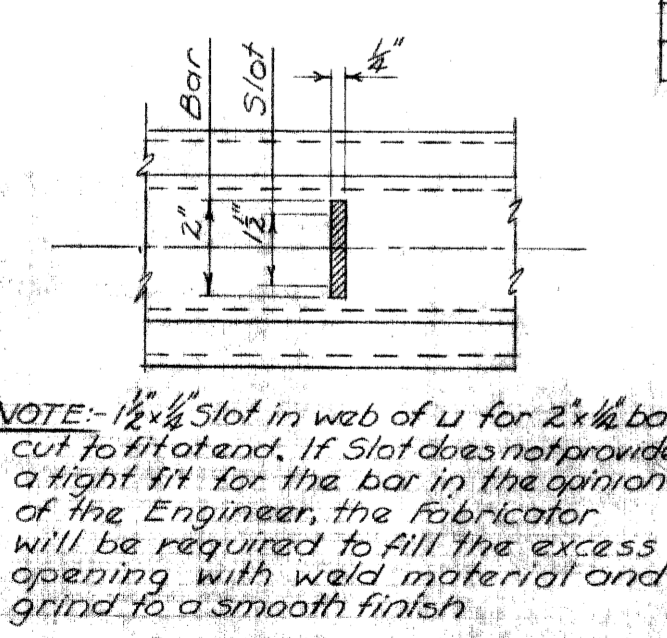
LAYOUT OF RAILING
Scale: 3/32" = 1'-0"

BILL OF MATERIAL - RAILING			
MARK	NO.	DESCRIPTION	REMARKS
RS-1	8	Railing Section	
RS-2	2	"	
RS-3	2	"	
RS-4	10	"	
RS-5	8	"	
RS-6	4	"	
P-12	24	Railing Posts (interior)	
P-15	2	" (End)	
P-16	2	" (End)	
P-17	8	" (Interior)	
RF-3	16	Railing Flanges	
RF-4	120	"	
AB-1	144	Anchor Bolts, Hex. Head & Nut	
	136	3/4" x 2 1/4" Hex. Head, No Nut	
	136	3/4" Lock Washers	

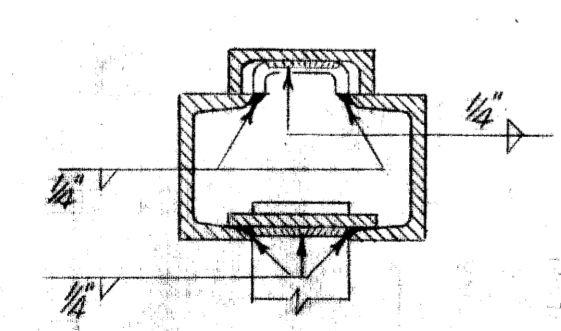


DETAIL OF RAILING SECTION
Not to Scale

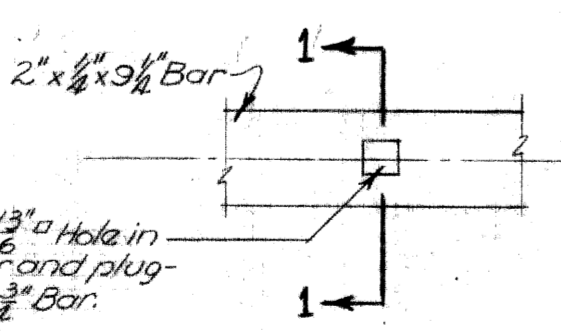
Mark	C	d	m
RS-1	4 7/8"	14"	1 1/2"
RS-2	4 5/8"	12"	1"
RS-3	4 5/8"	12"	1 1/2"
RS-4	4 7/8"	14"	1"
RS-5	4 7/8"	14"	0 1/2"
RS-6	4 7/8"	14"	0"



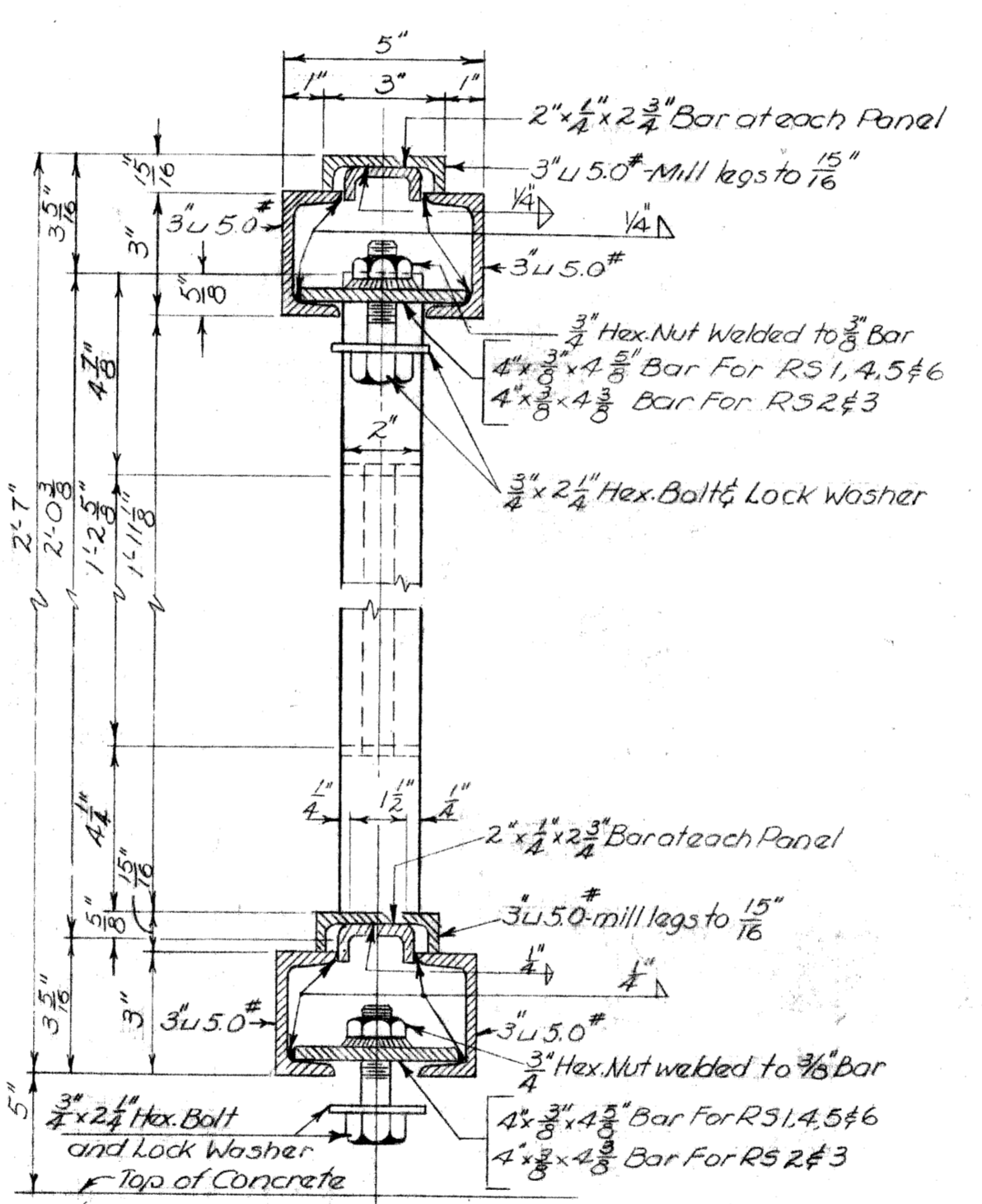
SECTION D-D
Scale: 3/4" = 1'-0"



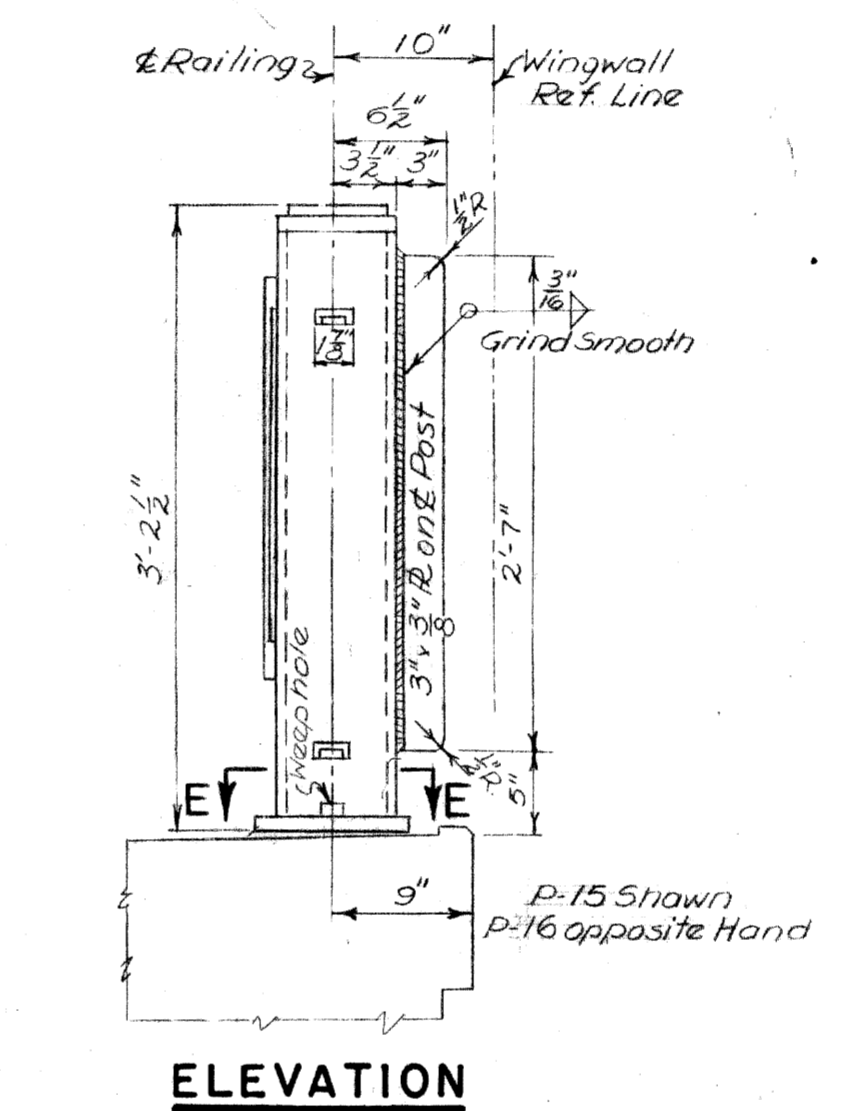
SECTION B-B
Scale: 3/4" = 1'-0"



SECTION C-C
Scale: 3/4" = 1'-0"

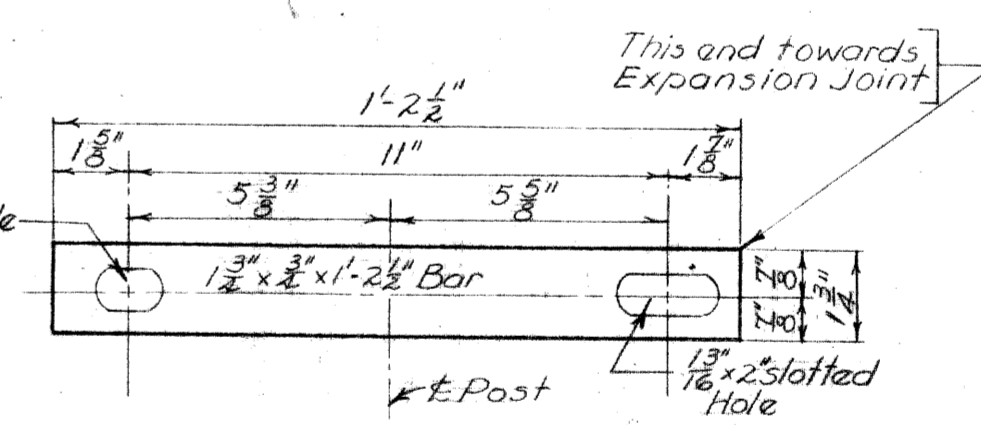


SECTION A-A
Scale: 3/4" = 1'-0"



ELEVATION

SECTION E-E
RAILING END POSTS P-15, P-16
Scale: 1" = 1'-0"



RAILING CLIP RC-20
(A part of Railing Post P-17)
Scale: 3/4" = 1'-0"

QUANTITIES

Bridge Railing ----- 329.8 Lin. Ft.

NOTES

Material
Material for Railing Sections and Posts shall be Structural Steel except Railing Post caps which may be made of Cast Aluminum instead of welded plates. Material for Flanges shall be Cast-base Alloy or Cast Aluminum (see standard sheet #R5).
Shop Paint:
The inside surfaces of all Railing Posts shall be painted in accordance with Standard Sheet R-5 after all parts have been welded. The entire Railing except the inside of Posts, shall be painted with one coat of Painting Mixture No. 1A, and in addition, the inside surfaces of the top and bottom rails shall receive one coat of Painting Mixture No. 5 Field Paint.
The outside surface of the entire Railing shall be painted with one coat of Painting Mixture No. 5 General.
For Detail of Post P-12, and Railing Flanges RF-3 and RF-4 see Standard Sheet R-5.
Details of Post P-15, and P-16 are same as P-12 shown on Standard Sheet R-5, except as shown.
Posts P-17 are the same as P-12, except that RC-20 Railing Clips are used and Holes for Railing Flange Screws are included on Expansion Side of P-17.
No Lead Plate is required under Railing Posts.
Vertical Elements of Railing shall be built to true vertical lines.

STATE FILE	BRIDGE	B52 of 82-22-12
	ROAD	
STATE PROJECT	COUNTY JOB	
82-128	849	
ISSUE NO.	SHEET NO.	
1	22	
DATE		
6-1-52		

REVISIONS CORRECT			DRAWN BY <i>E. Elia</i>	CHECKED BY <i>R. J. Beckley</i>	DATE 2-27-54	APPROVED <i>John K. Norton</i> COUNTY HIGHWAY ENGINEER	BOARD OF WAYNE COUNTY ROAD COMMISSIONERS DETROIT, MICHIGAN MICHAEL J. O'BRIEN JOHN P. O'HARA CHARLES L. WILSON	JOHN C. LODGE EXPRESSWAY LINWOOD AVENUE CROSSING RAILING DETAILS	STATE PROJECT 82-128	COUNTY JOB 849	SHEET NO. 22
-----------------------------	--	--	----------------------------	------------------------------------	-----------------	--	--	---	--------------------------------	--------------------------	------------------------